

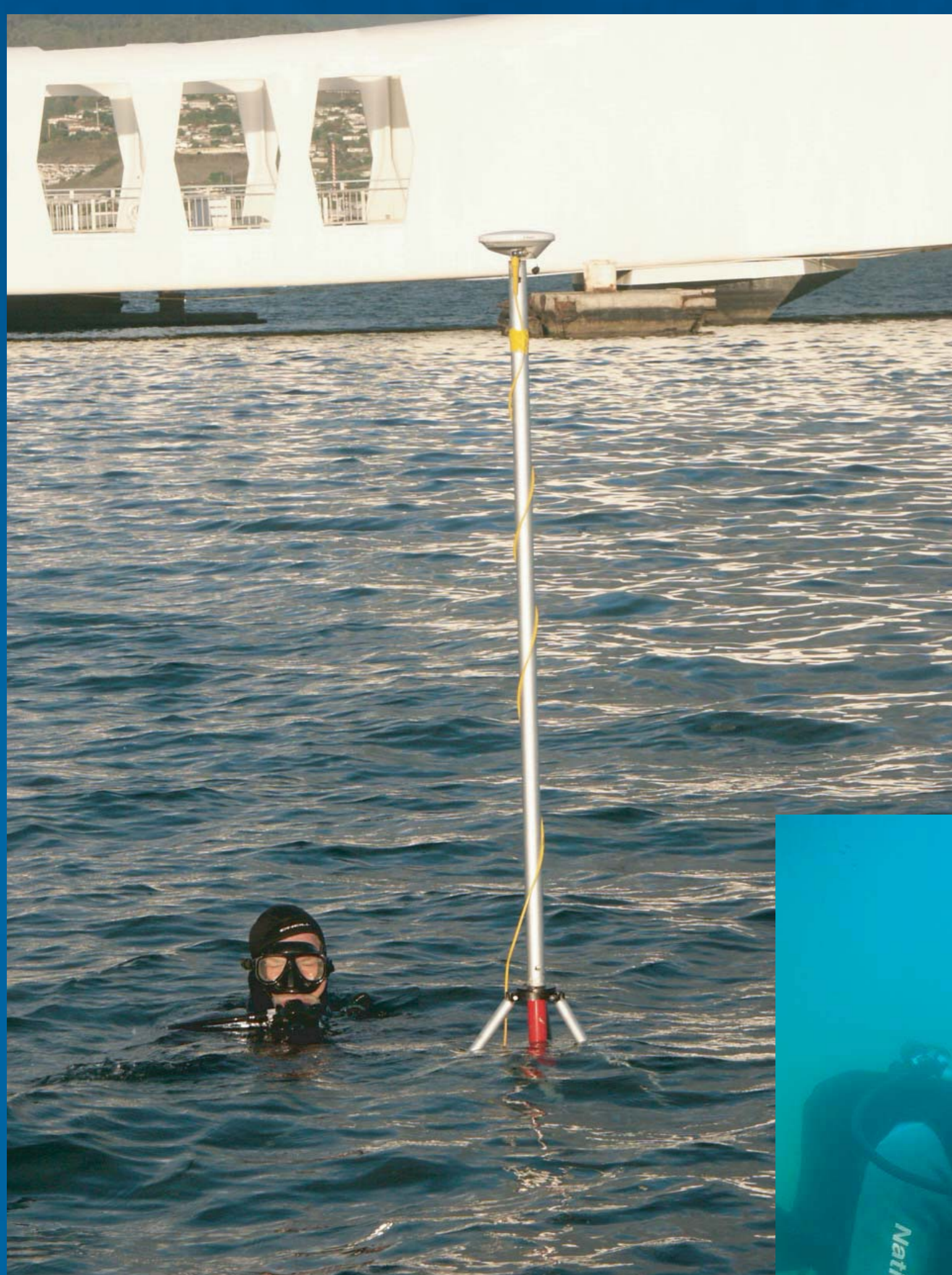


USS Arizona: Mapping a National Historic Landmark

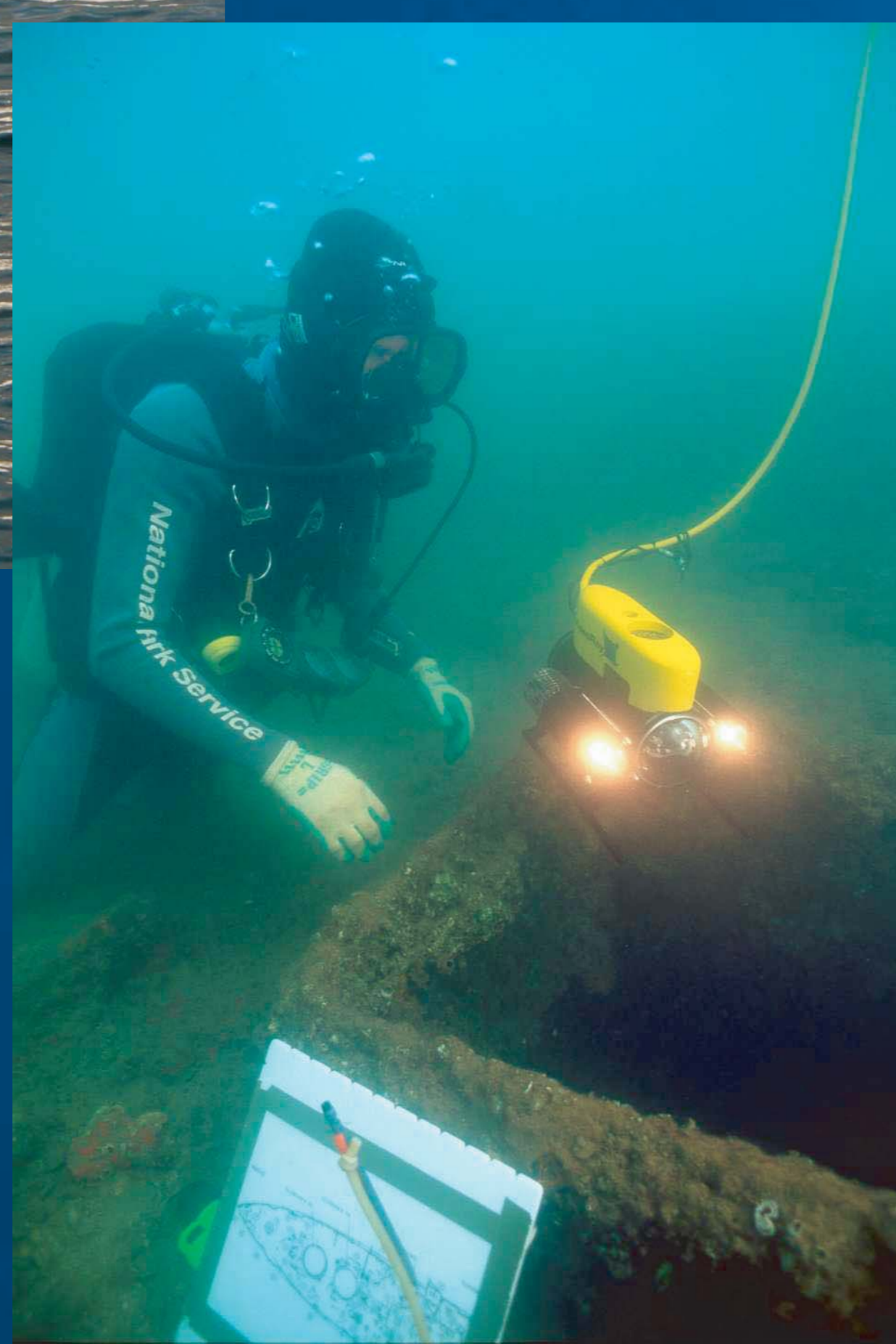
Maintaining the USS *Arizona* Memorial on Oahu Island, Hawaii, is the responsibility of the National Park Service (NPS), which commits extensive resources to preserving and protecting the wreck as a cultural resource of the United States.



NPS USS Arizona Memorial. (NPS Photo by Brett Seymour)



NPS divers collecting data. (NPS Photo by Brett Seymour)



The process of corrosion and degradation are being studied by a multidisciplinary team of experts lead by the National Park Service Submerged Resources Center. Understanding the nature and rate of these processes will guide future management decisions about the wreck.