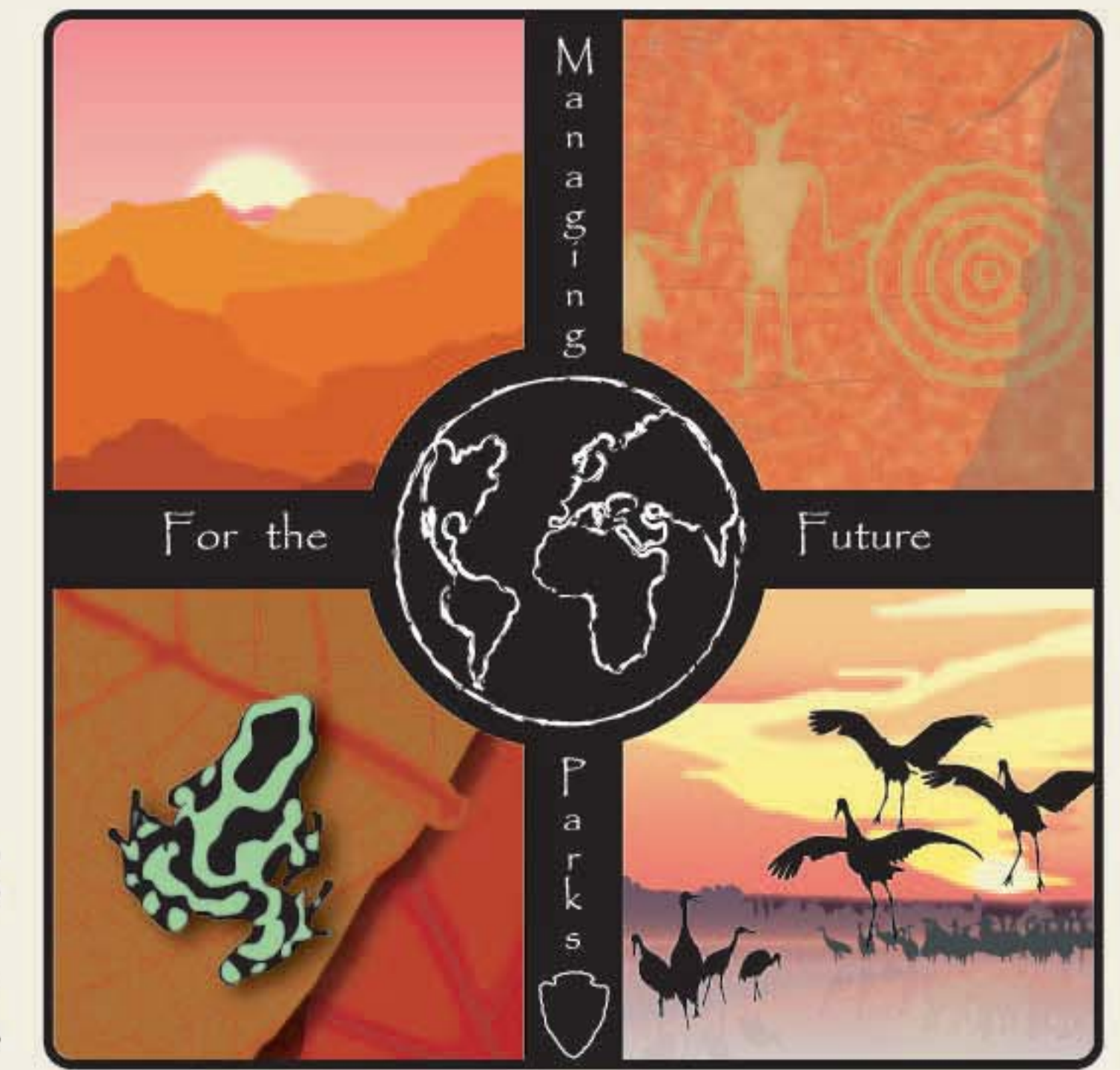




# Land Resources Division Online Data and Resources

Presentation by:  
Roger M Johnson



“The Land Resources National Program Center is the office of record for the acreage, interest and ownership for NPS land acquisitions. All land acquisition records and related records should be managed according to procedures established in Director's Order 25: Land Protection, and its accompanying reference material.”

**InsideNPS**  
Information Directory for NPS Employees

**LandsNet** - Land Acquisition Information for Parks

**ABOUT THE NPS LAND RESOURCES PROGRAM**  
The National Park Service (NPS) is guided by the Act of August 25, 1916, to protect and preserve resources within units of the National Park System, while providing for public use and enjoyment of those resources. A number of NPS units contain nonfederal lands. Depending on the use of these lands, it is sometimes necessary for the NPS to seek to acquire them, or interests in them, or conduct land exchanges in order to protect resources and visitor use and enjoyment. The NPS also cooperates with states, local governments, nongovernmental organizations and property owners to provide other forms of protection.

**GUIDELINES**  
Director's Order 25  
US Department of Justice Subtitle  
GENERAL RESOURCES  
Land Resources Telephone Directory (2/2/04)  
TractsNet - Internet Mapping Service to visualize & query LandsNet data  
Payments in Lieu of Taxes (PILT) Information  
New Public Lands  
Official NPS Site Listing  
Park Alpha Code Listing  
The National Parks Index 2001-2007 (Red Book)  
ARCHIVE DOCUMENTS  
Average Listing Reports: 12/2005 - 9/2005 - 12/2004 - 9/2004 - Archive  
Use Land's document entry to search the entire document archive  
MIS-MDL DATA DOWNLOADS  
MDL data export file in an Access or ODBC format (updated daily)  
Encumbrance data export file in an Access or ODBC format (updated daily)  
MDL & Encumbrance (OMB) in Alpha Code directories (updated daily)  
Questions or comments regarding this site should be directed to: [PPFL\\_LandsNet@nps.gov](mailto:PPFL_LandsNet@nps.gov)

**TractsNet - an Internet Mapping Service for Lands Data**

Select a Park: All United States [Go Now] [include background image if available (cross option)]

Query Tracts/Tracts Metadata / Access Redline Viewer / LandsNet Link / User Manual / Export Data / User / Download NPS Boundary Data

**Antietam National Battlefield (ANTB)** (Click here to visit parks web site.)

Legend:  
 Unlabeled  
 NPS Managed Land  
 Private Land  
 Local or State Government  
 Pending Federal Acquisition  
 NPS Fee  
 No NPS Interest  
 NPS Less Than 100 Acres  
 Other  
 County  
 City  
 Township  
 Water  
 Road  
 Railroads  
 Hydrography  
 Lakes  
 Rivers  
 PLSS  
 States & Possessions  
 Mexico  
 United States

| Tract ID | Acquisition Date | Acquisition Type | Acquisition Authority    | Acquisition Fee | Acquisition Status | Acquisition Description |
|----------|------------------|------------------|--------------------------|-----------------|--------------------|-------------------------|
| ANTB-001 | 1916             | Original         | Antietam Battlefield Act | 0               | Completed          | ...                     |
| ANTB-002 | 1916             | Original         | Antietam Battlefield Act | 0               | Completed          | ...                     |

**PUBLIC LAW 100-528 (H.R. 4554), October 25, 1988**

**LAND ACQUISITION, ANTIETAM NATIONAL BATTLEFIELD, MARYLAND**

Be it enacted by the Senate and House of Representatives of the United States of America in Congress assembled,

**SECTION 1. REMOVAL OF CERTAIN RESTRICTIONS ON LAND ACQUISITIONS FOR ANTIETAM NATIONAL BATTLEFIELD.**

(a) **ACREAGE LIMITATION.**—The first section of the Act entitled "An Act to provide for the protection and preservation of the Antietam Battlefield in the State of Maryland", approved April 22, 1960 (16 U.S.C. 4300) is amended by striking out "Not more than 600 acres of land, however, shall be acquired in fee by purchase or condemnation, but neither this limitation nor any other provision of law shall preclude such acquisition of the fee title to other lands and its immediate reconveyance to the former owner with such covenants, restrictions, or conditions as will accomplish the purposes of this section: Provided, That the cost to the Government of any such transaction shall not exceed the reasonable value of the purchase."

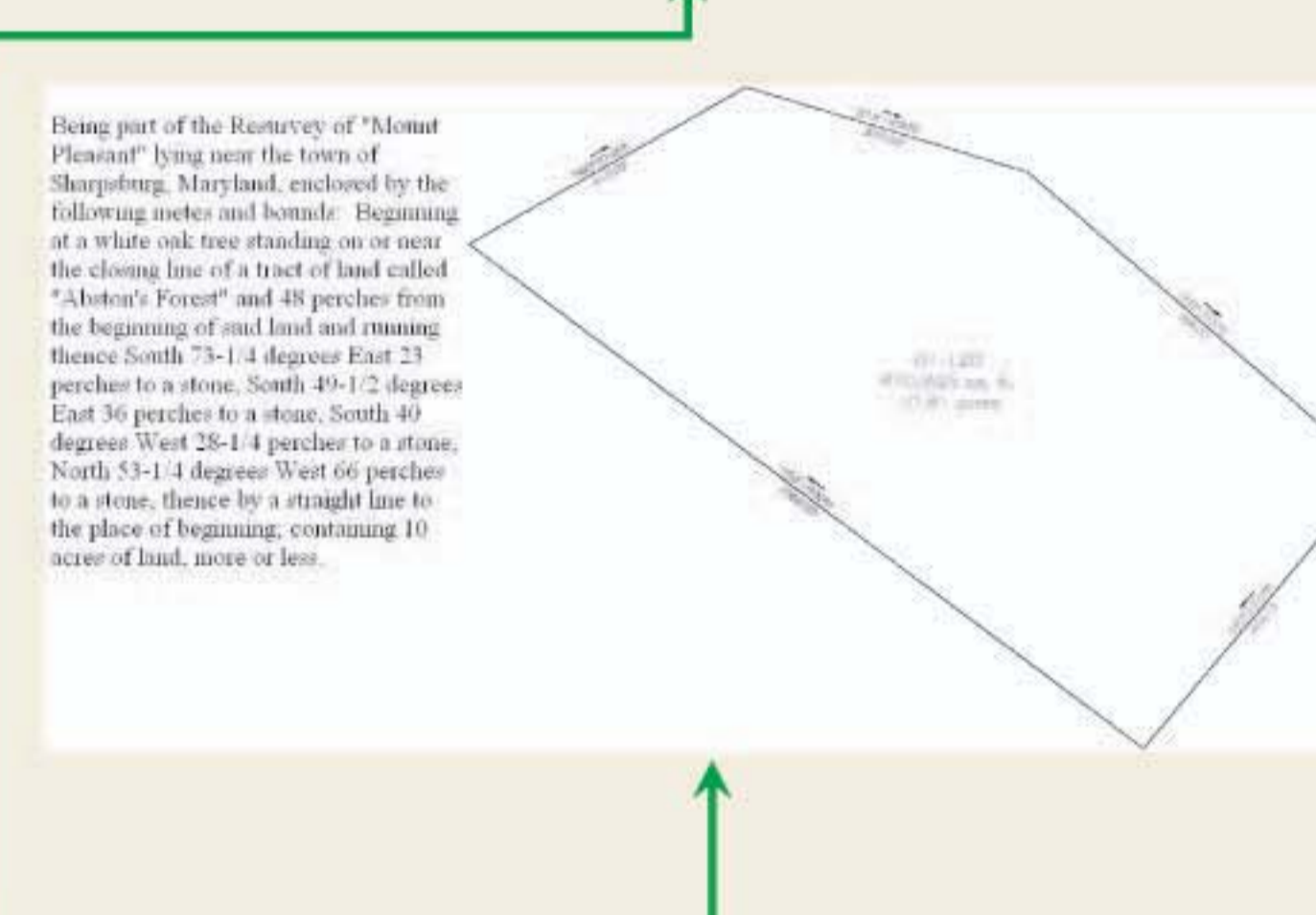
(b) **SCENIC EASEMENT LIMITATION.**—Section 519(a) of the National Parks and Recreation Act of 1978 (16 U.S.C. 4300a note) is amended by striking out "only scenic assessments over".

(c) **STATE EASEMENT LIMITATION.**—Section 519(b) of the National Parks and Recreation Act of 1978 (16 U.S.C. 4300a note) is amended by striking out "including only scenic assessments acquired pursuant to subsection (a) of this section."

Approved October 25, 1988.

**THIS DEED**, which is the title of a certain deed, in the presence of our Land and Survey and Surveyors, James M. ...

Witness our hand and the seal of the Department of the Interior, at Washington, D.C., this 25th day of October, 1988.



- Document Archives**
- ANTI
  - Change Orders
  - Deeds
  - Legislation
  - Legal Descriptions
  - Segment Maps
  - Metadata

**ANTHETAM NATIONAL BATTLEFIELD**

Legend:  
 FEDERAL LAND  
 PRIVATE LAND  
 LOCAL OR STATE GOVERNMENT  
 PENDING FEDERAL ACQUISITION  
 NPS FEE  
 NO NPS INTEREST  
 NPS LESS THAN 100 ACRES  
 OTHER

| Tract ID | Acquisition Date | Acquisition Type | Acquisition Authority    | Acquisition Fee | Acquisition Status | Acquisition Description |
|----------|------------------|------------------|--------------------------|-----------------|--------------------|-------------------------|
| ANTB-001 | 1916             | Original         | Antietam Battlefield Act | 0               | Completed          | ...                     |

## LRD's Online Resource Details

1. LandsNet URL: <http://landsnet.nps.gov/>
2. TractsNet URL: <http://landsnet.nps.gov/tractsnet/>
3. LRD's operational directives, guidelines, procedures, & data are available on the NPS intranet LandsNet.
4. NPS Current Administrative Boundary Data & metadata are available for public download in a ESRI shape file format on the NPS Data Clearinghouse: [http://nrdata.nps.gov/programs/gis/nps\\_boundary.zip](http://nrdata.nps.gov/programs/gis/nps_boundary.zip)
5. LRD's tract level ownership and acquisition information is updated daily. Information from this database can be downloaded in dBase & Access formats on LandsNet.
6. Questions about these resources can be directed to: [PPFL\\_LandsNet@nps.gov](mailto:PPFL_LandsNet@nps.gov)