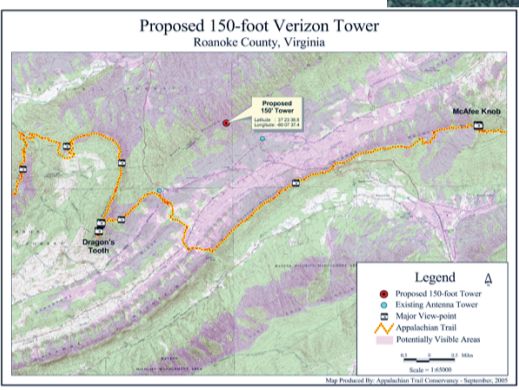
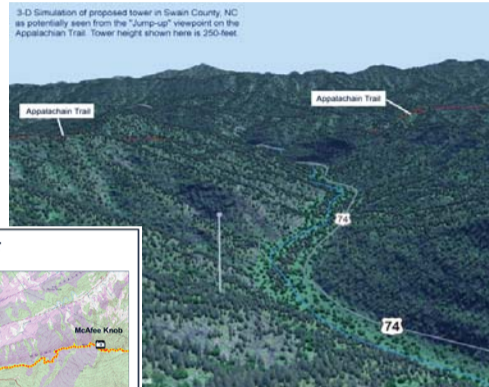
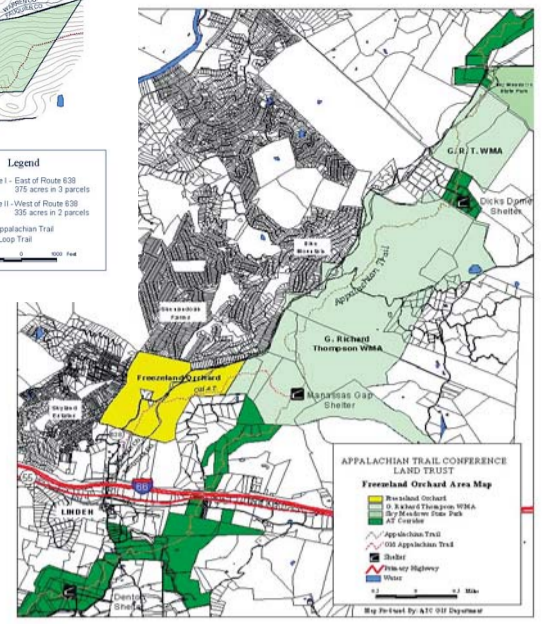
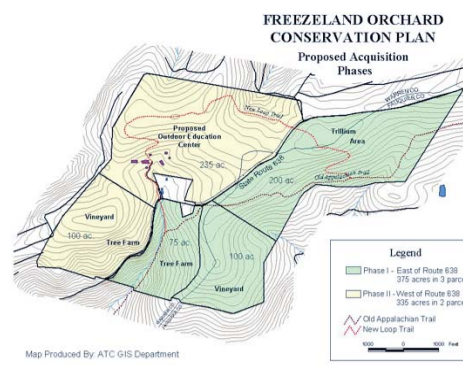


Continuing Conservation

- ATC is a registered land trust and has helped protect over 120,000 acres of land near the A.T., in addition to the land NPS and other agencies have protected.
- GIS is used to identify areas significant to the trail, create conservation strategies, and map protected properties.



Trail Protection

- Each year hundreds of developments are proposed near the A.T., including new roads, subdivisions, telecommunication towers, and other utilities
- Many of these can have a negative impact on the trail and must be evaluated
- GIS is used to map and analyze the impact of different proposed developments

Education Outreach

- NPS has recently begun a place-based education program focusing on the A.T.
- The goal of this program is to use the A.T. as a classroom through which to teach people about a variety of subjects
- GPS mapping is one topic included in the curriculum



Publications

- ATC publishes a variety of materials about the A.T., including the official A.T. hiking maps, guidebooks, data book, and the official magazine (AT Journeys)
- ATC uses GIS to produce the maps for these publications and for its Web site (www.appalachiantrail.org)
- GIS is also used to produce maps for public events, such as Trail Days (Damascus, VA), Trail Fest (Hot Springs, NC), National Trails Days, the Outdoor Retailers convention (Utah), and more

