

Trail and Facility Management

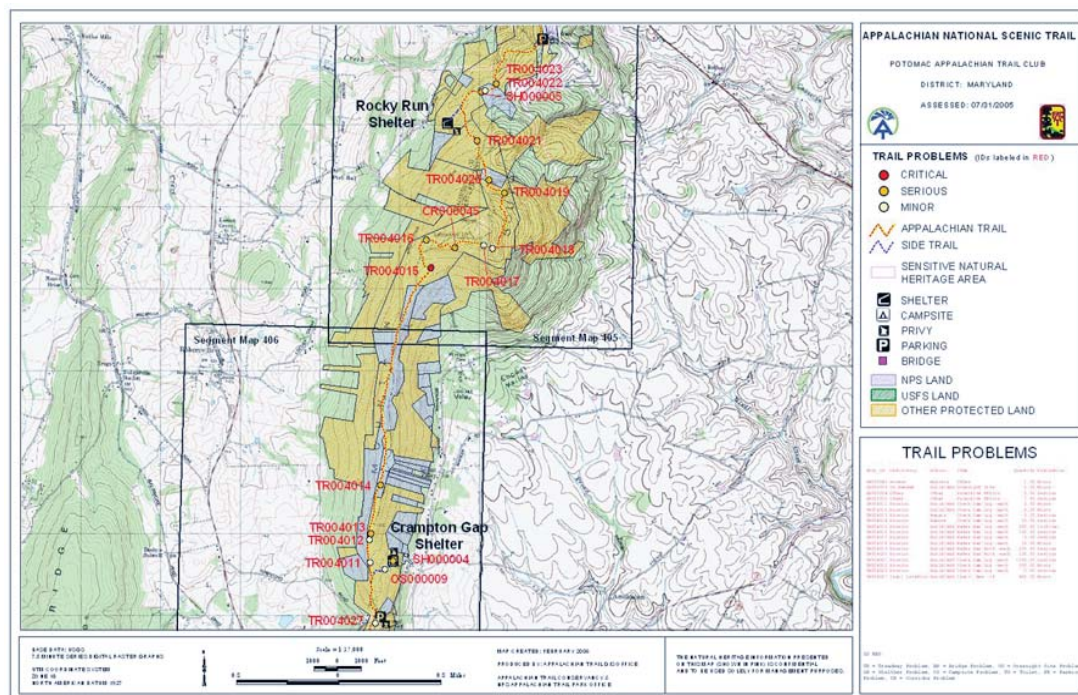
The Appalachian Trail has:

- 2,175 Miles of Trail
- 750 Buildings
- 200 Parking Lots
- 20 Major Bridges
- 1,200 Miles of Surveyed Boundary
- 9 Dams
- 2,000 Acres of Maintained Landscapes
- 20 Miles of Unpaved Roads
- Countless other features



Assets of the Appalachian Trail exceed \$184M

\$25M of deferred maintenance has been identified for the A.T.



Inventory & Assessment

- A comprehensive inventory of all "assets" is necessary for effective management
- Assets also need to be inspected in order to identify deficiencies and provide information for short and long range planning.
- We use Global Positioning Systems (GPS) to record an accurate location for each asset, identify deficiencies associated with that asset, and propose solutions for deficiencies.
- GPS data dictionary allows us to standardize data collection.
- Digital pictures that link to the GPS location are also taken with each asset

Data Management & Planning

- Data is managed in the "Facility Management Software System" (FMSS), a National Park Service database for inventory, assessment, and work identification.
- GIS is used to analyze the inventory and deficiency data in relation to other features such as land ownership, natural and cultural resources, wetlands, or existing structures.
- GIS is also used to create maps to guide project planning.
- Identified projects are prioritized, documented in FMSS, and used to request funding.