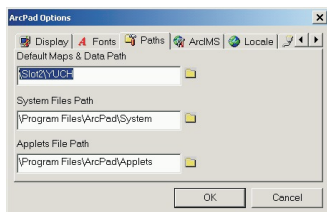


# FIRE PERIMETER COLLECTION WITH ARCPAD TRACKLOGS

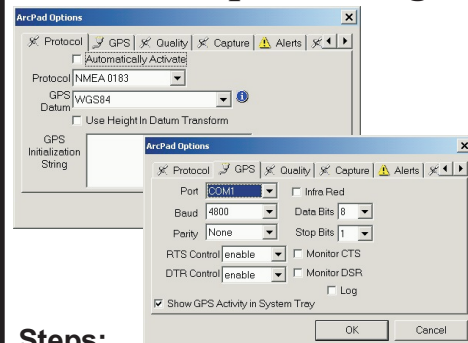
## Part 1: Start Arcpad and select an arcpad map



### Steps:

- 1) Start Arcpad: Arcpad 6.0
- 2) Tap the down arrow to the right of the tools button and select Options
- 3) Scroll to the Paths window and tap the folder next to the Default Maps and Data Path
- 4) Tap on the park of interest in the Slot2 directory
- 5) Close out of the Arcpad Options window and close Arcpad
- 6) Restart Arcpad 6.0

## Part 2: Arcpad Settings



### Steps:

- 1) Tap the down arrow next to the tools button and select Options
- 2) In the Protocol window: Protocol = NMEA 0183; GPS Datum = WGS84
- 3) In the GPS window: Port = COM1; Baud = 4800; Parity = None; Data Bits = 8; Stop Bits = 1
- 4) Close out of the Arcpad Options window

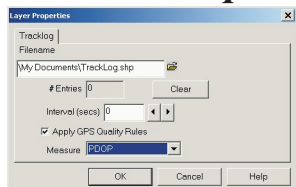
## Part 3: Garmin GPS III+ Settings



### Settings:

- Menu | Setup | Position | Position Format = hddd.ddddd | Map Datum = WGS84
- Menu | Setup | Interface = NMEA

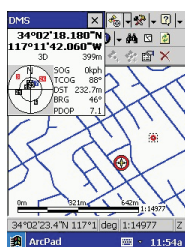
## Part 4: Setup Arcpad GPS Tracklog



### Steps:

- 1) Tap on the Layers button
- 2) Double-tap on GPS Tracklog
- 3) Tap clear to clear the old tracklog
- 3) Set Interval (secs)

## Part 5: Link to GPS and Collect Tracklogs



### Steps:

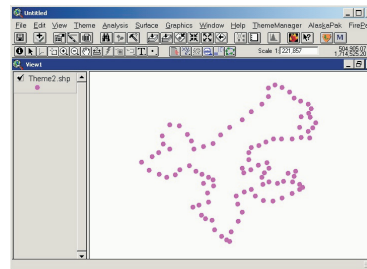
- 1) Tap the down arrow next to the Satellite Position button and select GPS Position Window
- 2) Tap Yes to activate the GPS
- 3) Tap GPS Tracklog to begin collecting points
- 4) Tap GPS Tracklog to stop collecting points

## Part 6: Project tracklog.shp to NAD27 (Alaska)

### Steps:

- 1) Transfer tracklog.shp from the My Documents folder on the Ipaq to your laptop
- 2) Add tracklog.shp to an Arview view and make it the active theme
- 3) Select Firepak | WGS84 to NAD27
- 4) Tracklog\_nad27.shp is the correct point shapefile to convert to a fire perimeter polygon

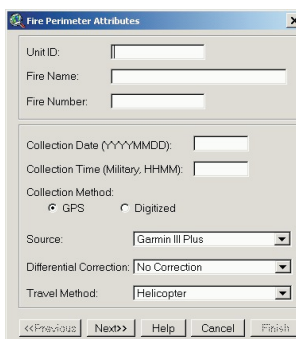
## Part 7: Arcview Editing



### Steps:

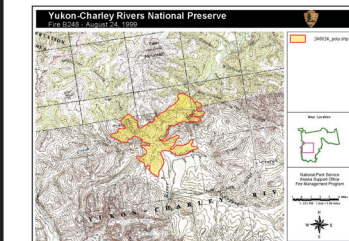
- 1) Load the 3Dto2D extension
- 2) Make the NAD27 tracklog the active theme
- 3) Click the 3Dto2D button to convert the 3D Arcpad tracklog to a 2D, editable shapefile
- 2) Make point shapefile the active theme
- 3) Theme | Start editing
- 4) Use the Select Feature tool to select waypoints to be discarded; press the Delete key to delete unwanted waypoints; Selected waypoints can also be moved
- 5) Theme | Stop editing
- 6) Use the Select Feature tool to draw a box around waypoints comprising a particular fire perimeter
- 7) Firepak | Convert point theme to Polygon/Polyline; Select polygon

## Part 8: Attribute Fire Perimeter



### Steps:

- 1) Select polygon using the Select Feature tool
- 2) Click on the Fire Perimeter Attributes tool
- 3) Complete forms as accurately as possible



## Part 9: Create a layout

### Steps:

- 1) Add the Alaskapak extension
- 2) Create a vicinity view; Open up a new view and add the park boundary theme
- 3) Alaskapak | Layout Wizard
- 4) Maplogo = c:\gis\av3\tools\_av\maplogo.tif