



DOI Executive Workshop on Enterprise Geospatial Systems - *The National Map*

Mark L. DeMulder
Acting Chief Scientist for Geography

U.S. Department of the Interior
U.S. Geological Survey

Powell on National Mapping



- Testimony to Congress on December 5, 1884
- *“A Government cannot do any scientific work of more value to the people at large, than by causing the construction of proper topographic maps of the country”*

USGS Topographic Maps



- Once-over mapping was an immense feat
- The only national synthesis of geography that is

Comprehensive

Transjurisdictional

*Border to border and
coast to coast*

- Cost of replication today would be \$2 to \$3 billion

A New Vision

- A *seamless, continuously maintained, nationally consistent* set of base geographic data – **THE NATIONAL MAP**
- Maintained through *partnerships*
- A *national foundation* for science, land and resource management, recreation, policy making, and homeland security
- Available over the Web and the source for revised topographic maps



Why Partnerships?

- **Because partners often have the most current data!**
- **Partnerships leverage the resource of all involved**
- **The USGS role emphasizes collaboration to create and maintain data, tools, and applications**
- **Partners include Federal agencies; State, tribal, regional, and local governments; private industry; universities and libraries; and the public**

Leading the Development of Partnerships to Build the NSDI

Federal

Counties

States

Cities

GOS Portal

Tribes

Academia

Private

Geospatial One Stop

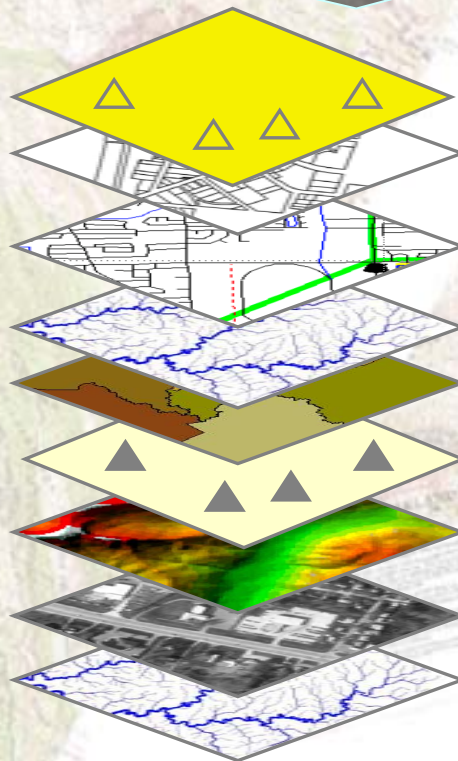
- Discovery and Access
- Common Infrastructure
- Harvesting

FGDC

- Coordination
- Standards/Policy
- Training

The National Map

- Integrated Content
- Seamless Base
- Map Products
- Framework Focus



Toxic Releases

Land Cover

Transportation

Surface Waters

Boundaries

Structures

Elevation

Orthophoto

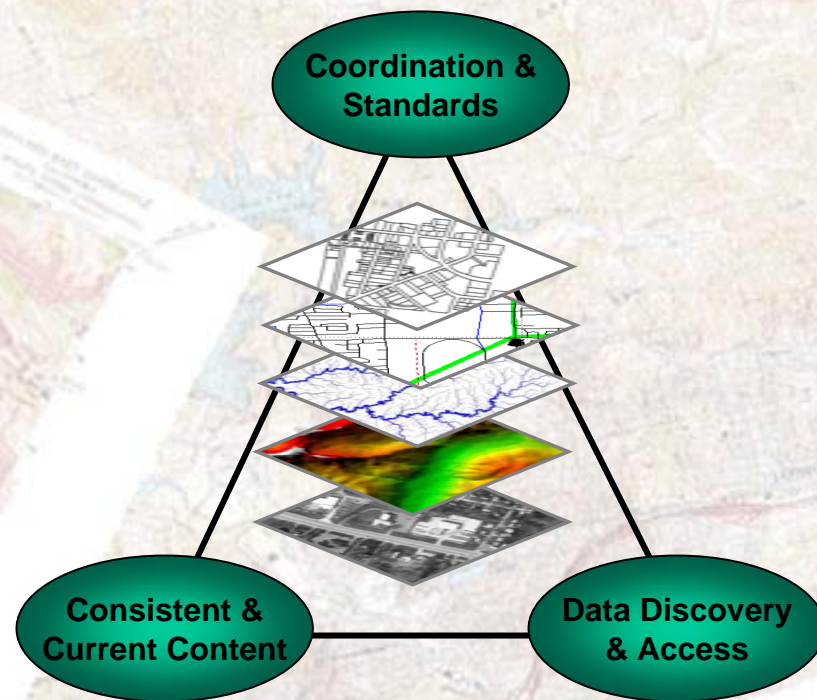
Geo Names



The National Map

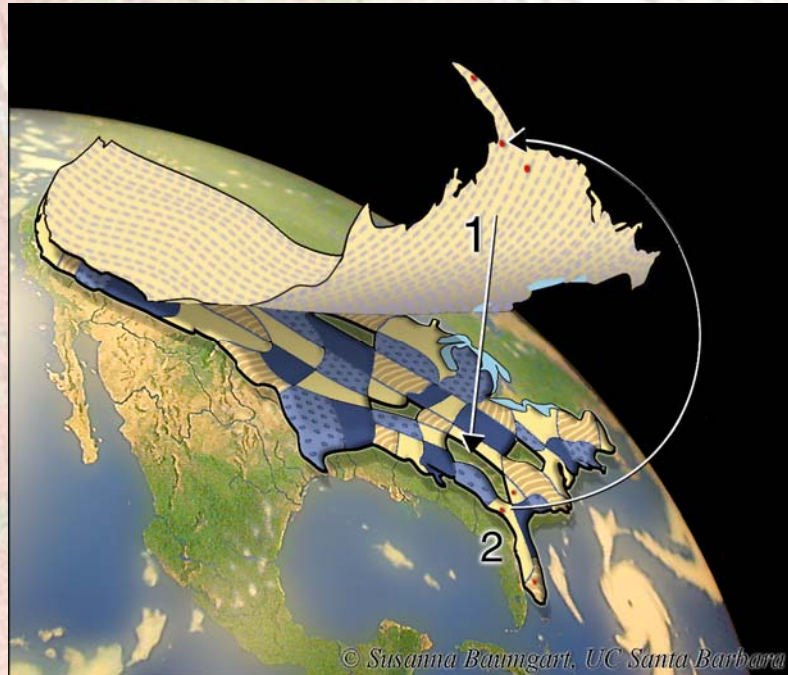
NSDI Roles

- *The National Map* – integrated base data
- FGDC – coordination standards, policy
- GOS – discovery and access

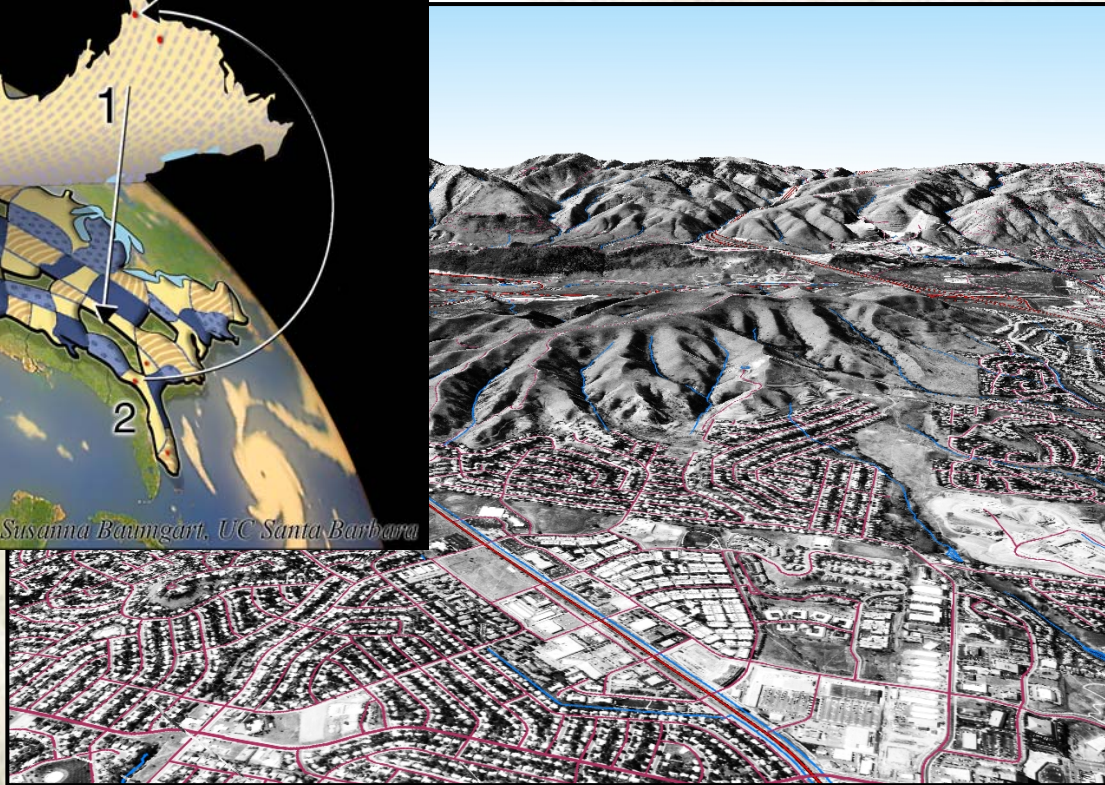


A triangle won't buckle, bend, or collapse when it's under pressure

A National Information Synthesis



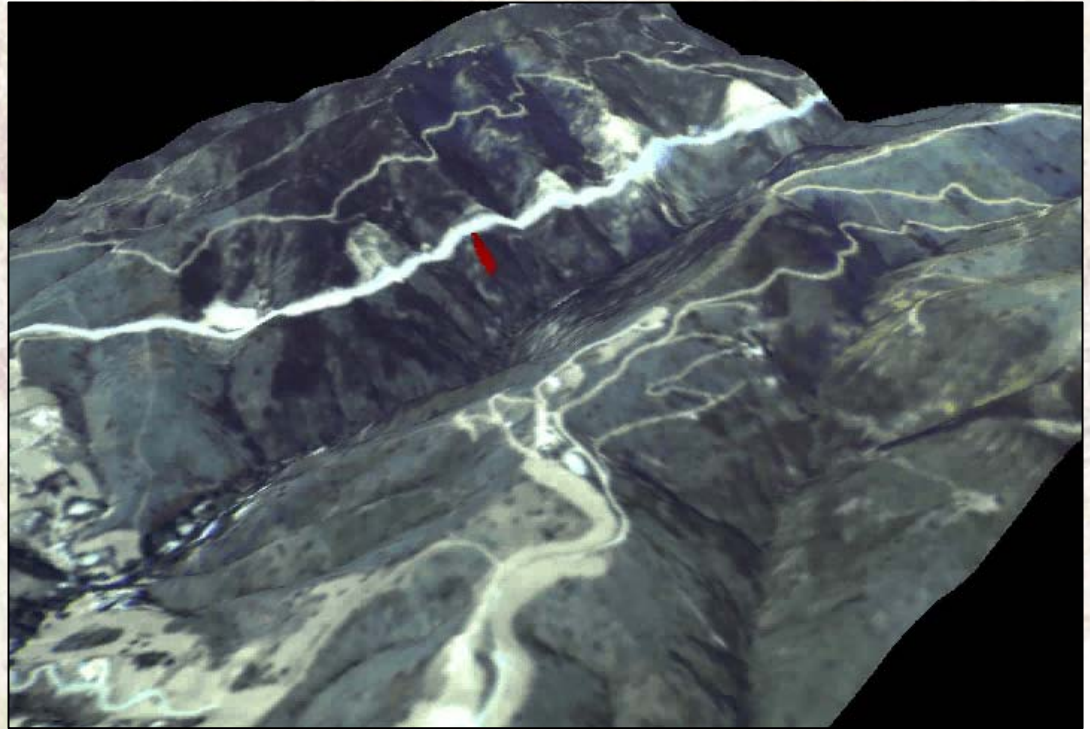
The blanket and a quilt
“Weaving a National Map,” NRC 2003



Lakewood, Colorado

Wildland Fire

- Information from *The National Map* on the **shape of the terrain and land cover** allows simulation of wildland fire behavior
- Other information such as roads and structures supports fire fighting operations



Animation courtesy Space Imaging

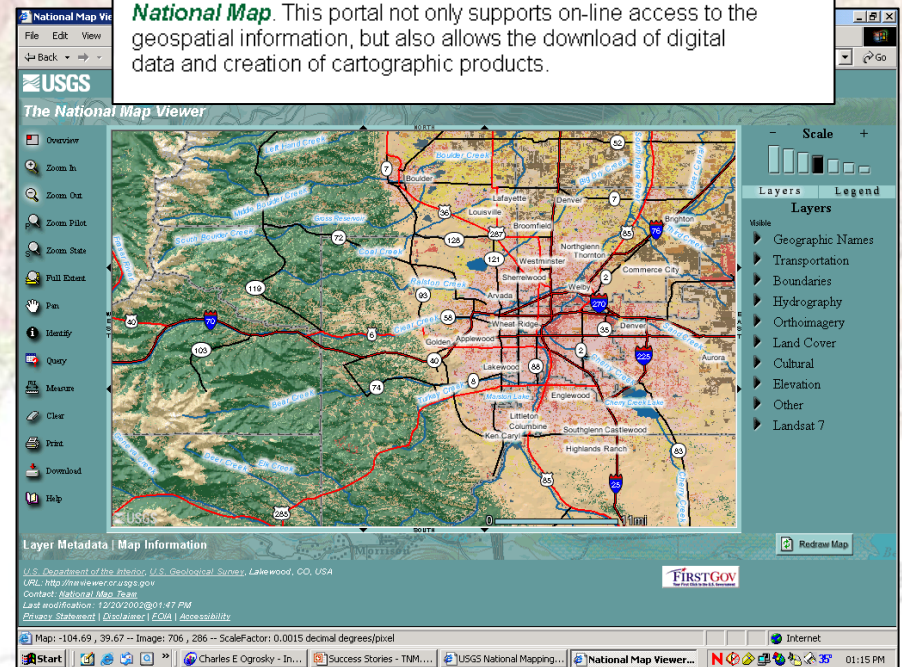
Implementing a Web Viewer

- The data of *The National Map* are viewable at nationalmap.usgs.gov
- This capability requires only a Web browser
- Initial sources of data include USGS national datasets and partner data

About The National Map Viewer

[Go to The National Map Viewer](#)

Welcome to *The National Map* viewer. This geographic information system (GIS) application is designed to provide easy access to geospatial information. The viewer is a Web-enabled portal to all of the geospatial information contained in *The National Map*. This portal not only supports on-line access to the geospatial information, but also allows the download of digital data and creation of cartographic products.



National Map Viewer - Microsoft Internet Explorer

File Edit View Favorites Tools Help

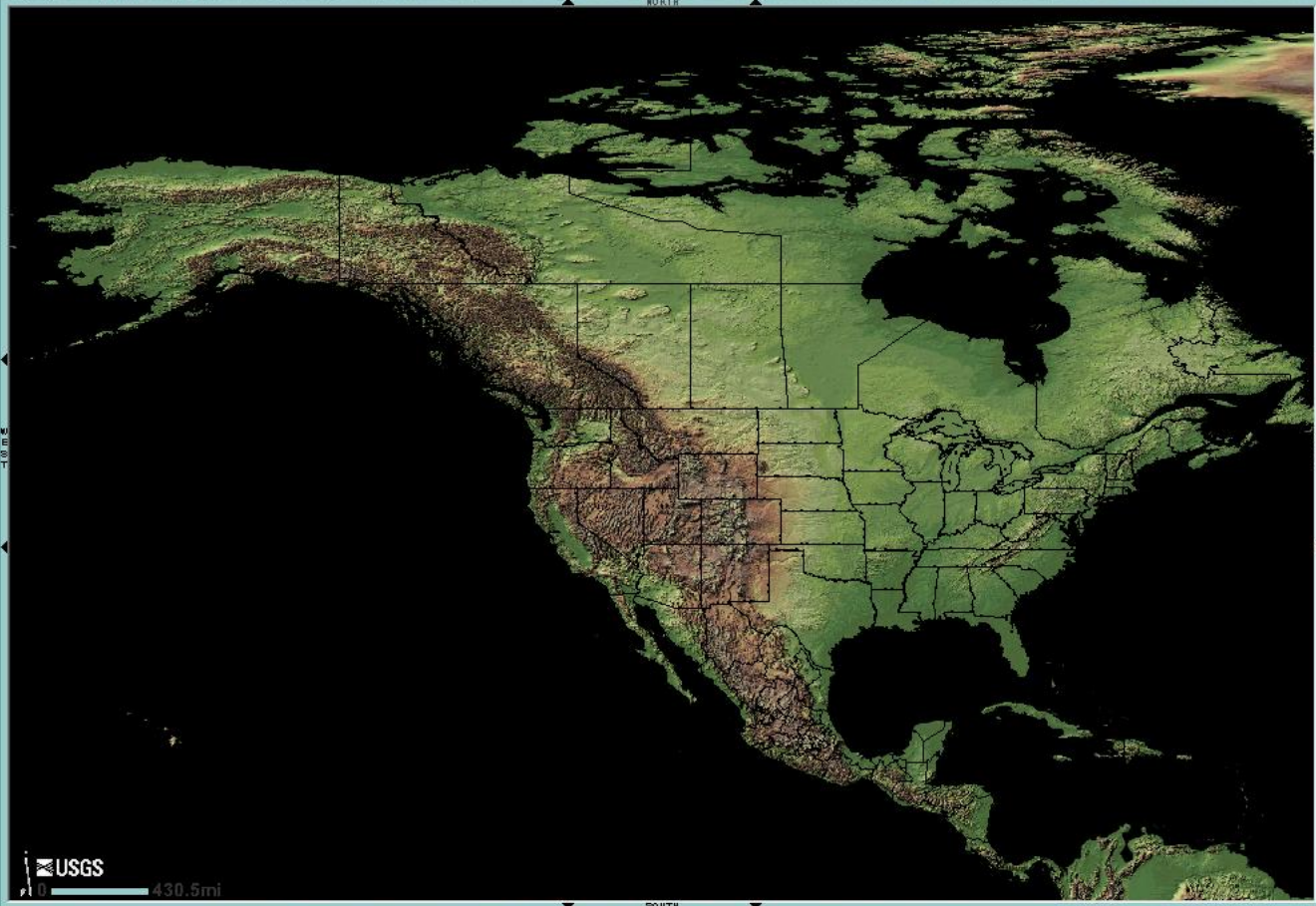
Back Forward Stop Home Search Favorites Media

Address <http://nmviewogc.cr.usgs.gov/viewer.htm> Go Links »

USGS The National Map

The National Map Viewer

- Overview
- Zoom In
- Zoom Out
- Zoom
- Region
- Full Extent
- Re-center
- Identify
- Find Place
- Elevation
- Measure
- Clear
- Print
- Download
- Options
- Help



Scale

Layers Legend

Visible

- Boundaries
- Elevation
- Other
- Orthoimagery
- Land Use/Land Cover
- Transportation
- Geographic Names
- Administrative
- Hydrography
- Structures

Redraw Map

USGS 430.5mi

Layer Metadata | Map Information | USGS | U.S. Forest Service

U.S. Department of the Interior, U.S. Geological Survey, Lakewood, CO, USA
URL: <http://nmviewogc.cr.usgs.gov/>
Contact: National Map Team
Last modification: 01/30/2004

FIRSTGOV
The First Step to the U.S. Government

Map: -149° 48' 59" , 82° 22' 30" -- NatGrid: 6X VS 58296 47706 (NAD83) -- ScaleFactor: 0.1173 dec degrees/pixel

Internet

National Map Viewer - Microsoft Internet Explorer

File Edit View Favorites Tools Help

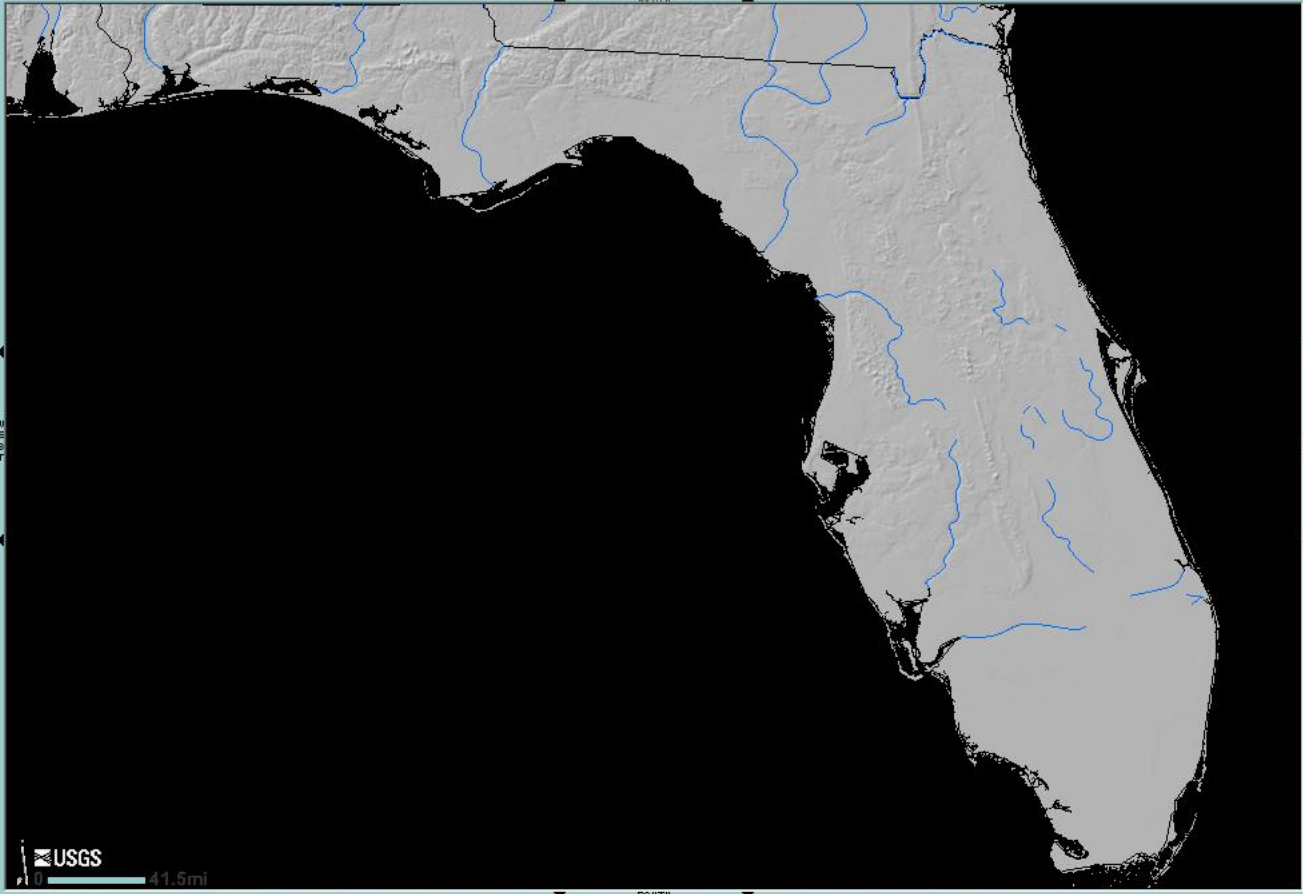
Back Forward Stop Home Search Favorites Media

Address <http://nmviewogc.cr.usgs.gov/viewer.htm> Go Links »

USGS The National Map

The National Map Viewer

- Overview
- Zoom In
- Zoom Out
- Zoom Region
- Full Extent
- Re-center
- Identify
- Find Place
- Elevation
- Measure
- Clear
- Print
- Download
- Options
- Help



Scale

Layers Legend

- ☒ State and Province Boundaries
- ☒ Elevation
 - ☐ CONTOURS
 - No layers available.
 - ☒ SHADED RELIEF
 - ☒ US NED Shaded Relief
- ☒ Geographic Names
- ☒ Geology
- ☒ Hydrography
 - ☐ INDEX/STATUS
 - ☐ NHD Sub Basin Status
 - ☒ NHD HIGH RES
 - No layers available.
 - ☐ NHD LOCAL RES
 - No layers available.
 - ☐ NHD MEDIUM RES
 - No layers available.
 - ☒ STREAM NETWORK
 - ☒ Streams 7.5M (National)
 - ☐ WATER RESOURCES
 - ☐ Real Time Gages
 - ☒ WATERBODIES
 - No layers available.
 - ☐ WETLANDS
 - ☐ Available Wetland Data
- ☒ Land Use/Land Cover
- ☒ Orthorectified

USGS 41.5mi

Layer Metadata | Map Information | USGS | U.S. Forest Service | NSIP | U.S. Fish & Wildlife Service | TerraServer USA | BLM

U.S. Department of the Interior, U.S. Geological Survey, Lakewood, CO, USA
URL: <http://nmviewogc.cr.usgs.gov/>
Contact: National Map Team
Last modification: 01/30/2004

Map: -86° 46' 56" , 30° 51' 51" -- NatGrid: 16R EV 20829 14578 (NAD83) -- ScaleFactor: 0.009 dec degrees/pixel

Internet

National Map Viewer - Microsoft Internet Explorer

File Edit View Favorites Tools Help

Back Forward Stop Home Search Favorites Media Print Copy Paste

Address <http://nmviewogc.cr.usgs.gov/viewer.htm> Go Links »

USGS The National Map Viewer

Overview

Zoom In

Zoom Out

Zoom

Region

Full

Extent

Re-center

Identify

Find Place

Elevation

Measure

Clear

Print

Download

Options

Help

Scale

Layers Legend

Visible

- Administrative
- Boundaries
- Elevation
- Geographic Names
- Geology
- Hydrography
- Land Use/Land Cover
- Orthoimagery
- Other
- Structures
- Transportation
 - MISC. TRANSPORTATION
 - No layers available.
 - RAILROADS
 - No layers available.
 - ☒ ROADS
 - ☒ Roads (USGS)
 - ☐ Roads BTS

Redraw Map

Layer Metadata | Map Information | USGS | U.S. Forest Service | U.S. Fish & Wildlife Service | TerraServer USA | BLM

U.S. Department of the Interior, U.S. Geological Survey, Lakewood, CO, USA

URL: <http://nmviewogc.cr.usgs.gov/>

Contact: National Map Team

Last modification: 01/30/2004

Map: -82° 42' 26" , 28° 12' 30" -- NatGrid: 17R LM 32440 21475 (NAD83) -- ScaleFactor: 0.001 dec degrees/pixel

Internet

The National Map Viewer



Lavers	Legend
1	1
2	2
3	3
4	4
5	5
6	6
7	7
8	8
9	9
10	10
11	11
12	12
13	13
14	14
15	15
16	16
17	17
18	18
19	19
20	20
21	21
22	22
23	23
24	24
25	25
26	26
27	27
28	28
29	29
30	30
31	31
32	32
33	33
34	34
35	35
36	36
37	37
38	38
39	39
40	40
41	41
42	42
43	43
44	44
45	45
46	46
47	47
48	48
49	49
50	50
51	51
52	52
53	53
54	54
55	55
56	56
57	57
58	58
59	59
60	60
61	61
62	62
63	63
64	64
65	65
66	66
67	67
68	68
69	69
70	70
71	71
72	72
73	73
74	74
75	75
76	76
77	77
78	78
79	79
80	80
81	81
82	82
83	83
84	84
85	85
86	86
87	87
88	88
89	89
90	90
91	91
92	92
93	93
94	94
95	95
96	96
97	97
98	98
99	99
100	100

Visible

- Administrative
- Boundaries
- Elevation
- Geographic Names
- Geology
- Hydrography
- Land Use/Land Cover
- Orthoimagery
- DOQ
- DOQ (TerraServer US)
- INDEX/STATUS (IMAGERY)
- Hi-Res Ortho Index
- Index of View Only History
- OTHER IMAGERY
- UA_ORTHO_Tampa01
- UA_ORTHO_Tampa02
- SATELLITE
- LANDSAT7
- LANDSAT7 Index
- SCANNED MAPS
- DRG (TerraServer US)
- Other
- Structures
- Transportation

 Redraw Map

[Layer Metadata](#) | [Map Information](#) | [USGS](#) | [U.S. Forest Service](#) | [U.S. Fish & Wildlife Service](#) | [TerraServer USA](#) | [BLM](#)

U.S. Department of the Interior, U.S. Geological Survey, Lakewood, CO, USA

URL: <http://nmviewwgc.cr.usgs.gov/>

Contact: National Map Team

Last modification: 01/30/2004

Map: -82° 39' 29" , 28° 12' 23" -- NatGrid: 17R LM 37285 21185 (NAD83) -- ScaleFactor: 0.001 dec degrees/pixel

 Internet

National Map Viewer - Microsoft Internet Explorer

File Edit View Favorites Tools Help

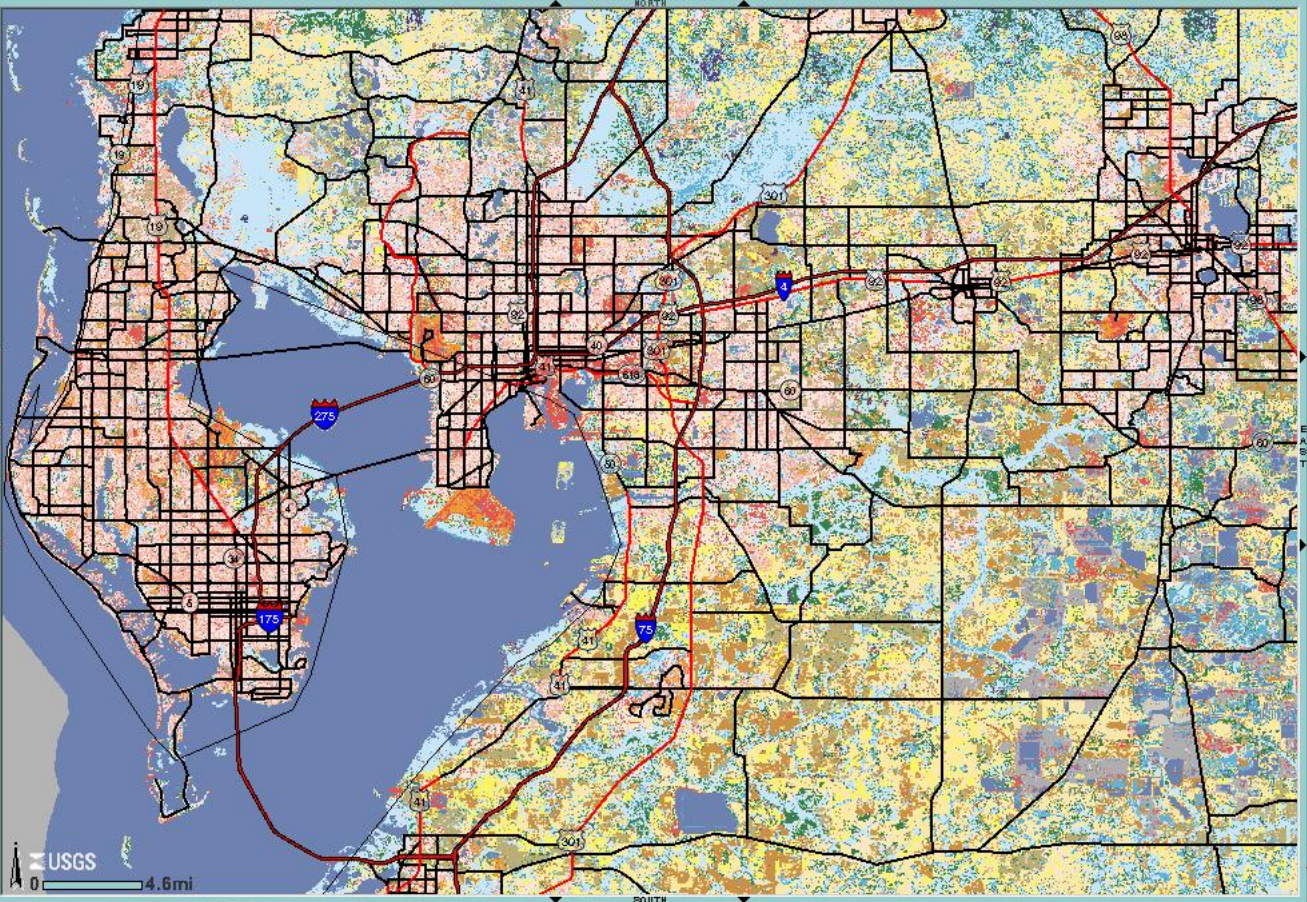
Back Forward Stop Home Search Favorites Media

Address <http://nmviewogc.cr.usgs.gov/viewer.htm> Go Links »

USGS The National Map

The National Map Viewer

- Overview
- Zoom In
- Zoom Out
- Zoom
- Region
- Full
- Extent
- Re-center
- Identify
- Find Place
- Elevation
- Measure
- Clear
- Print
- Download
- Options
- Help



Scale

Layers Legend

- Elevation
- Geographic Names
- Geology
- Hydrography
- Land Use/Land Cover
 - ☒ LAND COVER
 - ☐ USGS Current Green
 - ☒ USGS NLCD
- Orthoimagery
 - ☐ DOQ
 - ☐ DOQ (TerraServer US)
 - ☐ INDEX/STATUS (IMAGER)
 - ☐ Hi-Res Ortho Index
 - ☐ Index of View Only H
 - ☐ OTHER IMAGERY
 - ☐ UA_ORTHO_Tampa0
 - ☐ UA_ORTHO_Tampa0
 - ☐ SATELLITE
 - ☐ LANDSAT7
 - ☐ LANDSAT7 Index
 - ☐ SCANNED MAPS
 - ☐ DRG (TerraServer US)
- Other
- Structures
- Transportation

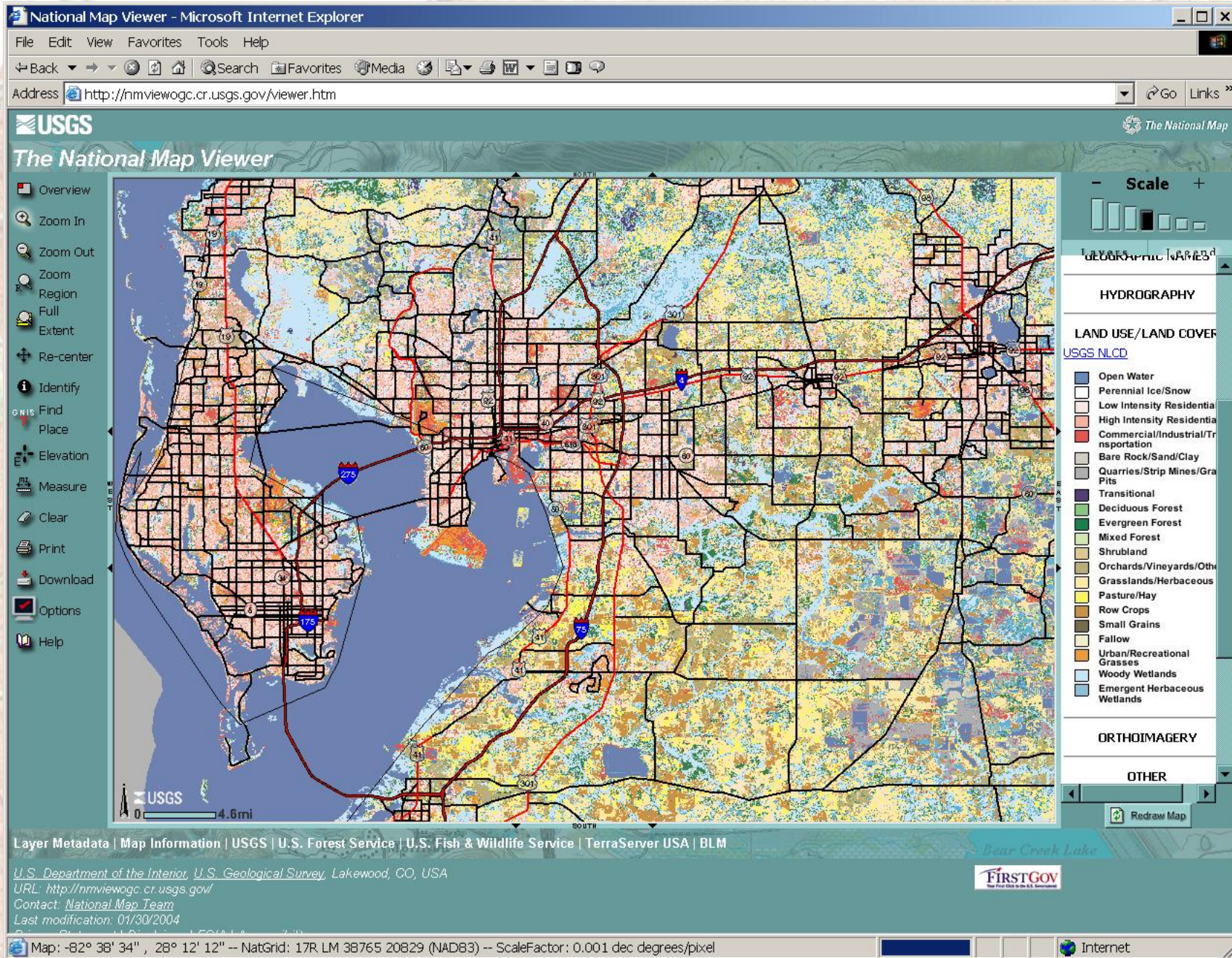
Redraw Map

Layer Metadata | Map Information | USGS | U.S. Forest Service | U.S. Fish & Wildlife Service | TerraServer USA | BLM

U.S. Department of the Interior, U.S. Geological Survey, Lakewood, CO, USA
URL: <http://nmviewogc.cr.usgs.gov/>
Contact: National Map Team
Last modification: 01/30/2004

Map: -82° 41' 54" , 28° 12' 41" -- NatGrid: 17R LM 33335 21798 (NAD83) -- ScaleFactor: 0.001 dec degrees/pixel

Internet



National Map Viewer - Microsoft Internet Explorer

File Edit View Favorites Tools Help

Back Forward Stop Home Search Favorites Media Print Copy Paste

Address <http://nmviewogc.cr.usgs.gov/viewer.htm> Go Links »

USGS The National Map Viewer

Overview

- Zoom In
- Zoom Out
- Zoom
- Region
- Full
- Extent
- Re-center
- Identify
- GNIS Find Place
- Elevation
- Measure
- Clear
- Print
- Download
- Options
- Help

Scale

Layers Legend

- Elevation
- Geographic Names
- Geology
- Hydrography
- Land Use/Land Cover
 - ☒ LAND COVER
 - ☒ USGS Current Green
 - ☐ USGS NLCD
- Orthoimagery
 - ☐ DOQ
 - ☐ DOQ (TerraServer US)
 - ☐ INDEX/STATUS (IMAGER)
 - ☐ Hi-Res Ortho Index
 - ☐ Index of View Only H
 - ☐ OTHER IMAGERY
 - ☐ UA_ORTHO_Tampa0
 - ☐ UA_ORTHO_Tampa0
 - ☐ SATELLITE
 - ☐ LANDSAT7
 - ☐ LANDSAT7 Index
 - ☐ SCANNED MAPS
 - ☐ DRG (TerraServer US)
- Other
- Structures
- Transportation

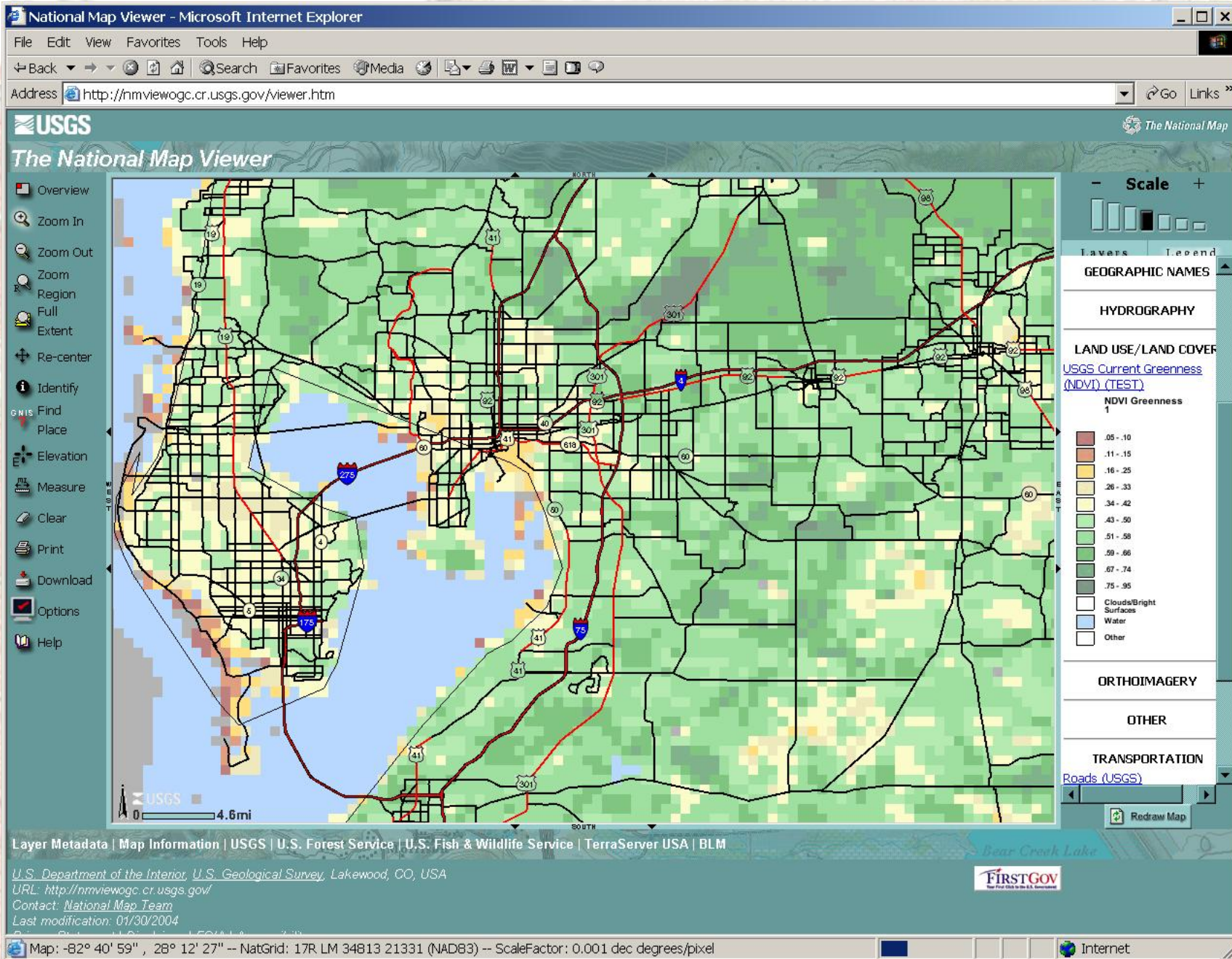
Redraw Map

Layer Metadata | Map Information | USGS | U.S. Forest Service | U.S. Fish & Wildlife Service | TerraServer USA | BLM

U.S. Department of the Interior, U.S. Geological Survey, Lakewood, CO, USA
URL: <http://nmviewogc.cr.usgs.gov/>
Contact: National Map Team
Last modification: 01/30/2004

Map: -82° 40' 09" , 28° 12' 16" -- NatGrid: 17R LM 36194 20976 (NAD83) -- ScaleFactor: 0.001 dec degrees/pixel

Internet

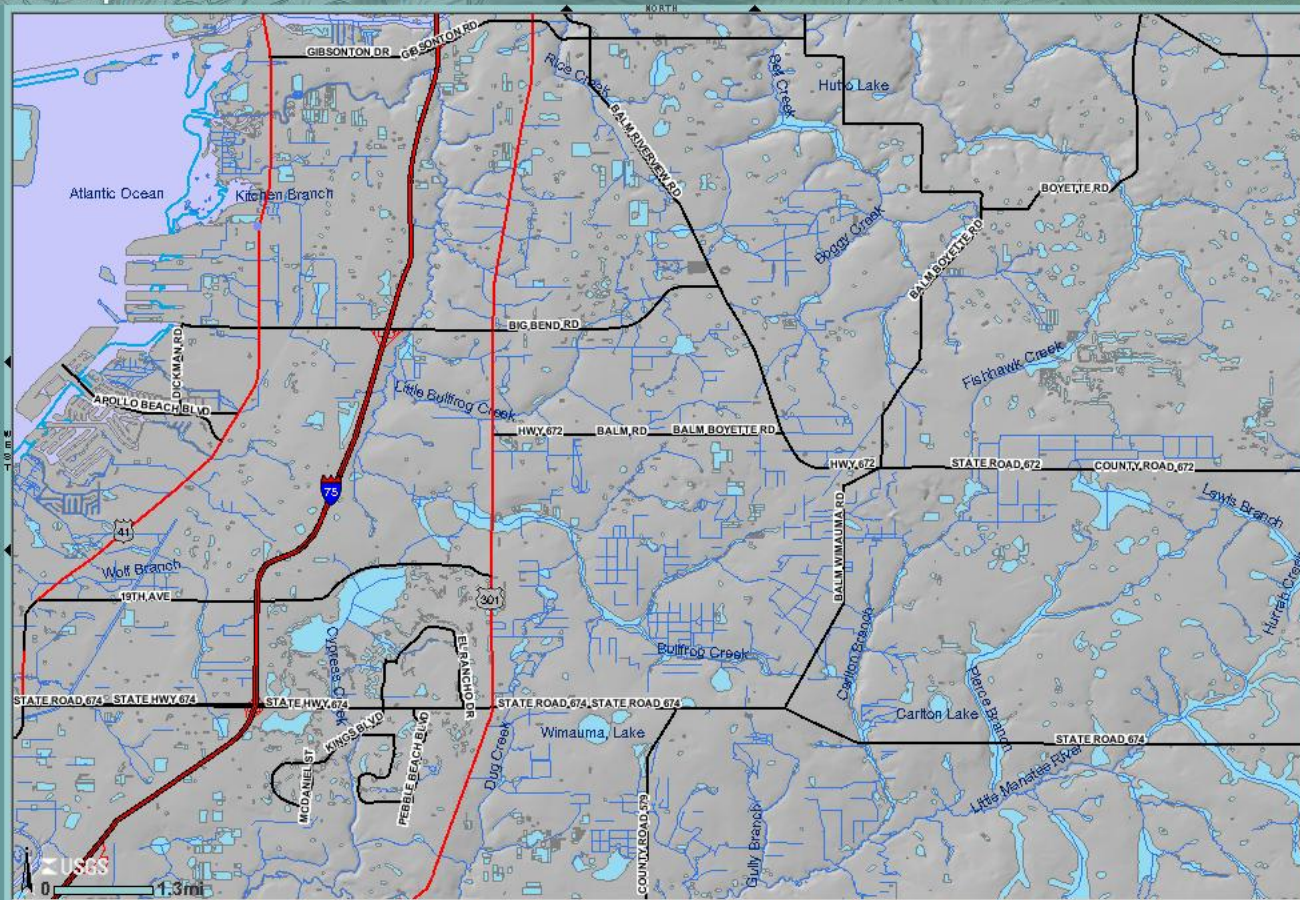


 Internet



The National Map Viewer

- Overview
- Zoom In
- Zoom Out
- Zoom
- Region
- Full
- Extent
- Re-center
- Identify
- Find Place
- Elevation
- Measure
- Clear
- Print
- Download
- Options
- Help



Scale

Layers Legend

Hydrography

- ☐ INDEX/STATUS (HYDRO)
- ☐ NHD Sub Basin Status
- ☒ NHD HIGH RES
- ☒ NHD High Res Area
- ☒ NHD High Res Flowlin
- ☒ NHD High Res Line
- ☒ NHD High Res Point
- ☒ NHD High Res Watert
- ☐ NHD LOCAL RES
- ☐ NHD Local Res Area
- ☐ NHD Local Res Flowlin
- ☐ NHD Local Res Line
- ☐ NHD Local Res Point
- ☐ NHD Local Res Water
- ☐ NHD MEDIUM RES
- ☐ NHD Medium Res Are
- ☐ NHD Medium Res Flo
- ☐ NHD Medium Res Lin
- ☐ NHD Medium Res Poi
- ☐ NHD Medium Res Wa
- ☐ STREAM NETWORK
- ☐ No layers available.
- ☐ WATER RESOURCES
- ☐ No layers available.

Redraw Map

Layer Metadata | Map Information | USGS | U.S. Forest Service | U.S. Fish & Wildlife Service | TerraServer USA | BLM

U.S. Department of the Interior, U.S. Geological Survey, Lakewood, CO, USA

URL: <http://nmviewogc.cr.usgs.gov/>

Contact: National Map Team

Last modification: 01/30/2004

© 2004 U.S. Geological Survey, U.S. Forest Service, U.S. Fish & Wildlife Service

Map: -82° 23' 41", 27° 51' 13" -- NatGrid: 17R LL 62681 81767 (NAD83) -- ScaleFactor: 0.0003 dec degrees/pixel

Internet

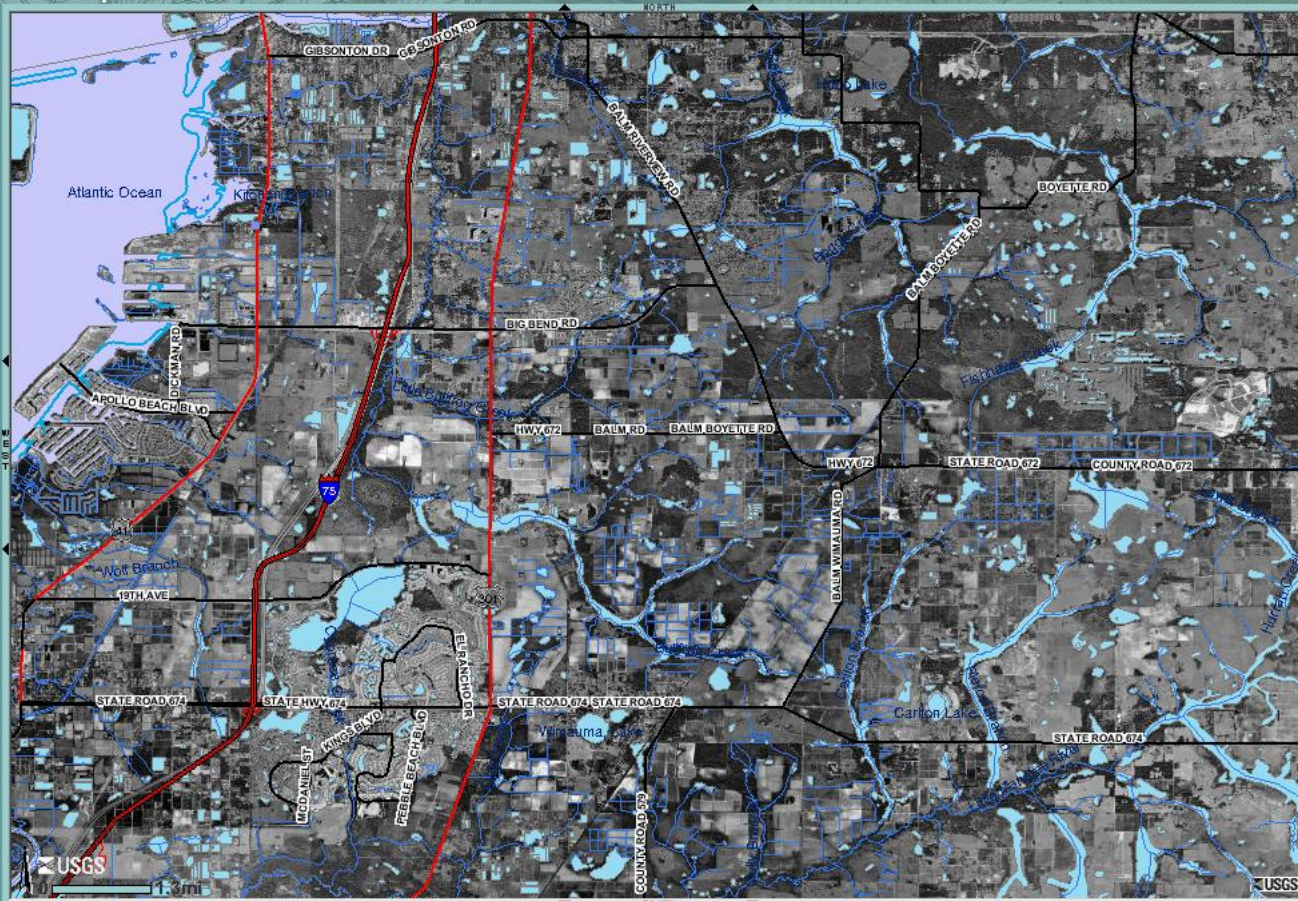




The National Map

The National Map Viewer

- Overview
- Zoom In
- Zoom Out
- Zoom
- Region
- Full
- Extent
- Re-center
- Identify
- Find Place
- Elevation
- Measure
- Clear
- Print
- Download
- Options
- Help



Scale

Layers Legend

Hydrography

- ☐ INDEX/STATUS (HYDRO)
- ☐ NHD Sub Basin Status
- ☒ NHD HIGH RES
- ☒ NHD High Res Area
- ☒ NHD High Res Flowlin
- ☒ NHD High Res Line
- ☒ NHD High Res Point
- ☒ NHD High Res Watert
- ☐ NHD LOCAL RES
- ☐ NHD Local Res Area
- ☐ NHD Local Res Flowlin
- ☐ NHD Local Res Line
- ☐ NHD Local Res Point
- ☐ NHD Local Res Water
- ☐ NHD MEDIUM RES
- ☐ NHD Medium Res Are
- ☐ NHD Medium Res Flo
- ☐ NHD Medium Res Lin
- ☐ NHD Medium Res Poi
- ☐ NHD Medium Res Wa
- ☐ STREAM NETWORK
- ☐ No layers available.
- ☐ WATER RESOURCES
- ☐ No layers available.

Redraw Map

Layer Metadata | Map Information | USGS | U.S. Forest Service | U.S. Fish & Wildlife Service | TerraServer USA | BLM

U.S. Department of the Interior, U.S. Geological Survey, Lakewood, CO, USA

URL: <http://nmviewogc.cr.usgs.gov/>

Contact: National Map Team

Last modification: 01/30/2004

© 2004 U.S. Geological Survey, U.S. Fish & Wildlife Service

Map: -82° 23' 35", 27° 51' 10" -- NatGrid: 17R LL 62846 81671 (NAD83) -- ScaleFactor: 0.0003 dec degrees/pixel

Internet

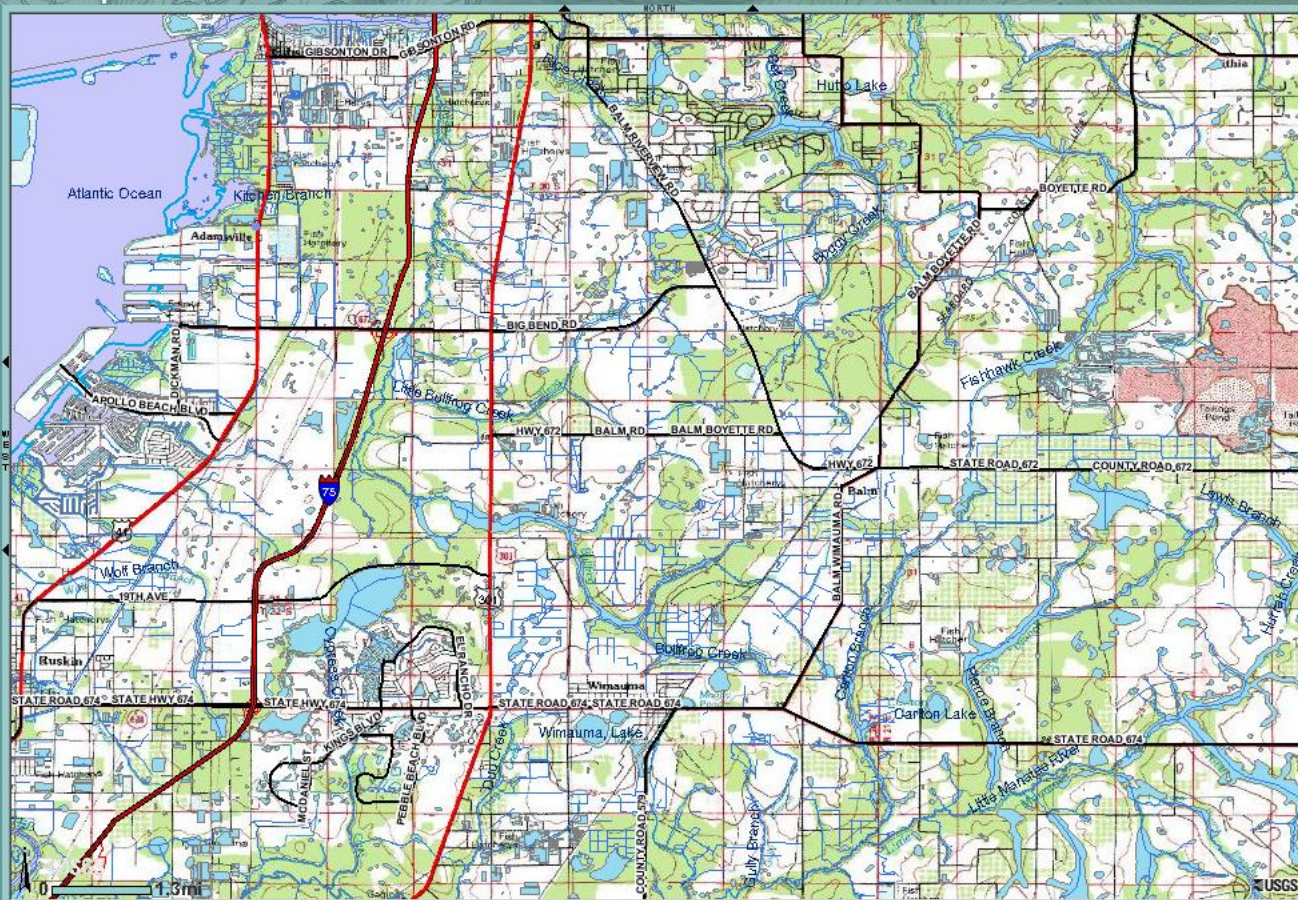




The National Map

The National Map Viewer

- Overview
- Zoom In
- Zoom Out
- Zoom
- Region
- Full
- Extent
- Re-center
- Identify
- Find Place
- Elevation
- Measure
- Clear
- Print
- Download
- Options
- Help



Scale

Layers Legend

Hydrography

- ☐ INDEX/STATUS (HYDRO)
- ☐ NHD Sub Basin Status
- ☒ NHD HIGH RES
- ☒ NHD High Res Area
- ☒ NHD High Res Flowlin
- ☒ NHD High Res Line
- ☒ NHD High Res Point
- ☒ NHD High Res Watert
- ☐ NHD LOCAL RES
- ☐ NHD Local Res Area
- ☐ NHD Local Res Flowlin
- ☐ NHD Local Res Line
- ☐ NHD Local Res Point
- ☐ NHD Local Res Water
- ☐ NHD MEDIUM RES
- ☐ NHD Medium Res Are
- ☐ NHD Medium Res Flo
- ☐ NHD Medium Res Lin
- ☐ NHD Medium Res Poi
- ☐ NHD Medium Res Wa
- ☐ STREAM NETWORK
- ☐ No layers available.
- ☐ WATER RESOURCES
- ☐ No layers available.

Redraw Map

Layer Metadata | Map Information | USGS | U.S. Forest Service | U.S. Fish & Wildlife Service | TerraServer USA | BLM

U.S. Department of the Interior, U.S. Geological Survey, Lakewood, CO, USA

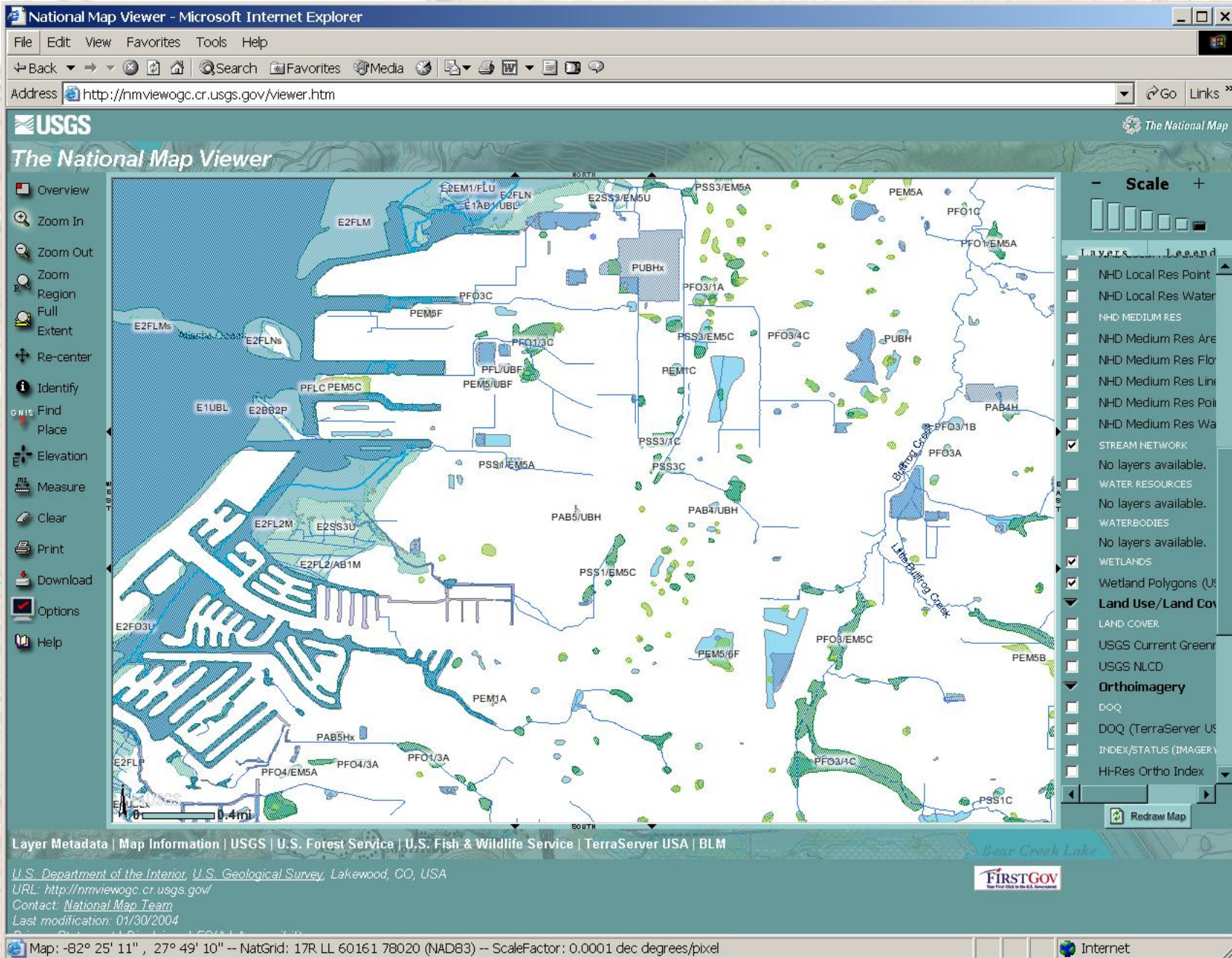
URL: <http://nmviewogc.cr.usgs.gov/>

Contact: National Map Team

Last modification: 01/30/2004

Map: -82° 23' 33", 27° 51' 19" -- NatGrid: 17R LL 62904 81951 (NAD83) -- ScaleFactor: 0.0003 dec degrees/pixel

Internet



http://wetlandswms.er.usgs.gov/servlet/com.esri.wms.Esrimap?servicename=USFWS_WMS_CONUS_Wetland - Microsoft Internet Explorer

File Edit View Favorites Tools Help

Back Forward Stop Home Search Favorites Media Print Copy Paste

Address http://wetlandswms.er.usgs.gov/servlet/com.esri.wms.Esrimap?servicename=USFWS_WMS_CONUS_Wetlands&request=getFeatureInfo&version=1.1.0&bbox=-82.432356% Go Links »

WET_POLY.QAQC_CODE	WETLANDS_DBA.CONUS_WET_POLY.WETLAND_TYPE	WETLANDS_DBA.CONUS_WET_POLY.ACRES	#SHAPE#
	Freshwater Emergent Wetland	2.09640801	[Geometry]

Done Internet

The National Map Viewer

- **Scale** +


 Layers... Legend
 NHD Local Res Point
 NHD Local Res Water
 NHD MEDIUM RES
 NHD Medium Res Are
 NHD Medium Res Flo
 NHD Medium Res Lin
 NHD Medium Res Poi
 NHD Medium Res Wa
 STREAM NETWORK
 No layers available.
 WATER RESOURCES
 No layers available.
 WATERBODIES
 No layers available.
 WETLANDS
 Wetland Polygons (U
Land Use/Land Cov
 LAND COVER
 USGS Current Green
 USGS NLCD
Orthoimagery
 DOQ
 DOQ (TerraServer US
 INDEX/STATUS (IMAGERY)
 Hi-Res Ortho Index


U.S. Fish and Wildlife Service - Microsoft Internet Explorer

File Edit View Favorites Tools Help

Back Forward Stop Home Search Favorites Media Print Mail News RSS Feeds

Address <http://www.fws.gov/> Go Links »



U.S. Fish & Wildlife Service

Conserving the Nature of America

Search U.S. Fish & Wildlife Service Offices

Portal Links

- [ABC](#)
- [Birds](#)
- [Contaminants](#)
- [Contracts](#)
- [Endangered Species](#)
- [Fire](#)
- [Fisheries](#)
- [Fishing](#)
- [Grants](#)
- [Habitat](#)
- [History](#)
- [Hunting](#)
- [Images](#)
- [Information](#)
- [Quality](#)
- [Index](#)
- [International](#)
- [Jobs](#)
- [Kids/Educators](#)
- [Law](#)
- [Enforcement](#)
- [Legislation](#)
- [Library](#)
- [News](#)
- [Offices](#)
- [Partnerships](#)
- [Permits](#)
- [Planning](#)
- [Policies](#)
- [Questions?](#)
- [Refuges](#)
- [Species](#)
- [Training](#)


Service Suspends Issuance of Incidental Take Permits In Accordance With Court Order on “No Surprises” Assurances

In response to an order by the U.S. District Court for the District of Columbia, the U.S. Fish and Wildlife Service has suspended the issuance of new incidental take permits under the Endangered Species Act that contain "No Surprises" assurances based on habitat conservation plans with landowners.

[News Release](#)

Service Launches New Wetlands Map Tool

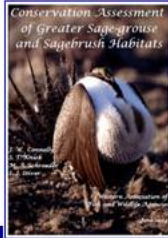
The Service has launched a new improved wetlands mapper on the Internet. The mapper allow users to view wetlands and deepwater habitats, and to download data



GOT A QUESTION?

USFWS Customer Service Center
1-800-344-WILD

Conservation Assessment of Greater Sage-grouse and Sagebrush Habitat



Released
[Learn More](#)
[Range-wide Conservation Assessment of Greater Sage-grouse and Sage Habitats.pdf](#)
(11.6 MB)

Fish and Wildlife Service to Initiate a Status Review of the Greater Sage-Grouse



 Internet

The National Map Viewer

- **Scale** +

 Layers... Legend
 NHD Local Res Point
 NHD Local Res Water
 NHD MEDIUM RES
 NHD Medium Res Are
 NHD Medium Res Flo
 NHD Medium Res Lin
 NHD Medium Res Poi
 NHD Medium Res Wa
 STREAM NETWORK
 No layers available.
 WATER RESOURCES
 No layers available.
 WATERBODIES
 No layers available.
 WETLANDS
 Wetland Polygons (U
Land Use/Land Cov
 LAND COVER
 USGS Current Green
 USGS NLCD
Orthoimagery
 DOQ
 DOQ (TerraServer US
 INDEX/STATUS (IMAGERY)
 Hi-Res Ortho Index


National Map Viewer - Microsoft Internet Explorer

File Edit View Favorites Tools Help

Back Forward Stop Home Search Favorites Media Print View Source

Address <http://nmviewogc.cr.usgs.gov/viewer.htm> Go Links »

USGS The National Map

The National Map Viewer

Overview

Zoom In

Zoom Out

Zoom Region

Full Extent

Re-center

Identify

Find Place

Elevation

Measure

Clear

Print

Download

Options

Help

Scale

Layers Legend

Hydrography

- ☐ INDEX/STATUS (HYDROG
- ☐ NHD Sub Basin Status
- ☒ NHD HIGH RES
- ☒ NHD High Res Area
- ☒ NHD High Res Flowlin
- ☒ NHD High Res Line
- ☒ NHD High Res Point
- ☒ NHD High Res Waterb
- ☐ NHD LOCAL RES
- ☐ NHD Local Res Area
- ☐ NHD Local Res Flowli
- ☐ NHD Local Res Line
- ☐ NHD Local Res Point
- ☐ NHD Local Res Water
- ☐ NHD MEDIUM RES
- ☐ NHD Medium Res Are
- ☐ NHD Medium Res Flo
- ☐ NHD Medium Res Lin
- ☐ NHD Medium Res Poi
- ☐ NHD Medium Res Wa
- ☐ STREAM NETWORK
- ☐ No layers available.
- ☐ WATER RESOURCES
- ☐ No layers available.

Redraw Map

Layer Metadata | Map Information | U.S. Forest Service | USGS | U.S. Fish & Wildlife Service | TerraServer USA | BLM

U.S. Department of the Interior, U.S. Geological Survey, Lakewood, CO, USA
URL: <http://nmviewogc.cr.usgs.gov/>
Contact: National Map Team
Last modification: 01/30/2004

Map: -82° 23' 42" , 27° 49' 52" -- NatGrid: 17R LL 62623 79273 (NAD83) -- ScaleFactor: 0.0001 dec degrees/pixel

Internet

National Map Viewer - Microsoft Internet Explorer

File Edit View Favorites Tools Help

Back Forward Stop Home Search Favorites Media

Address <http://nmviewwgc.cr.usgs.gov/viewer.htm> Go Links

The National Map Viewer

Overview

Zoom In

Zoom Out

Zoom

Region

Full

Extent

Re-center

Identify

Find Place

Elevation

Measure

Clear

Print

Download

Options

Help

Scale

Layers Legend

☐ LAND COVER

☐ USGS Current Green
 ☐ USGS NLCD

☒ Orthoimagery

☐ DOQ
 ☐ DOQ (TerraServer US
 ☐ INDEX/STATUS (IMAGERY)
 ☐ Hi-Res Ortho Index
 ☐ Index of View Only H
 ☒ OTHER IMAGERY
 ☒ UA_ORTHO_Tampa0

☐ SATELLITE

☐ LANDSAT7
 ☐ LANDSAT7 Index
 ☐ SCANNED MAPS
 ☐ DRG (TerraServer US

☐ Other

☐ Structures
 ☒ Transportation

☐ MISC. TRANSPORTATION
 No layers available.

☐ RAILROADS
 No layers available.
 ☐ ROADS
 ☐ Roads BTS

Redraw Map

Layer Metadata | Map Information | U.S. Forest Service | USGS | U.S. Fish & Wildlife Service | TerraServer USA | BLM

U.S. Department of the Interior, U.S. Geological Survey, Lakewood, CO, USA
URL: <http://nmviewwgc.cr.usgs.gov/>
Contact: National Map Team
Last modification: 01/30/2004

Map: -82° 23' 36" , 27° 49' 52" -- NatGrid: 17R LL 62772 79286 (NAD83) -- ScaleFactor: 0.0001 dec degrees/pixel

Internet

National Map Viewer - Microsoft Internet Explorer

File Edit View Favorites Tools Help


Back Forward Stop Home Search Favorites Media Print View Source Help

Address <http://nmviewogc.cr.usgs.gov/viewer.htm> Go Links »

USGS The National Map

The National Map Viewer

- Overview
- Zoom In
- Zoom Out
- Zoom Region
- Full Extent
- Re-center
- Identify
- Find Place
- Elevation
- Measure
- Clear
- Print
- Download
- Options
- Help



Scale

Layers Legend

- ☐ LAND COVER
- ☐ USGS Current Green
- ☐ USGS NLCD
- ☒ Orthoimagery
 - ☐ DOQ
 - ☐ DOQ (TerraServer US
 - ☐ INDEX/STATUS (IMAGERY
 - ☐ Hi-Res Ortho Index
 - ☐ Index of View Only H
 - ☒ OTHER IMAGERY
 - ☒ UA_ORTHO_Tampa0
 - ☐ SATELLITE
 - ☐ LANDSAT7
 - ☐ LANDSAT7 Index
 - ☐ SCANNED MAPS
 - No layers available.
- ☐ Other
- ☐ Structures
- ☒ Transportation
 - ☐ MISC. TRANSPORTATION
 - No layers available.
 - ☐ RAILROADS
 - No layers available.
 - ☐ ROADS
 - ☐ Roads BTS

Redraw Map

Layer Metadata | Map Information | U.S. Forest Service | USGS | U.S. Fish & Wildlife Service | TerraServer USA | BLM

U.S. Department of the Interior, U.S. Geological Survey, Lakewood, CO, USA
URL: <http://nmviewogc.cr.usgs.gov/>
Contact: National Map Team
Last modification: 01/30/2004

Map: -82° 23' 22" , 27° 49' 53" -- NatGrid: 17R LL 63174 79287 (NAD83) -- ScaleFactor: 0 dec degrees/pixel

Internet

National Map Viewer - Microsoft Internet Explorer

File Edit View Favorites Tools Help

Back Forward Stop Home Search Favorites Media

Address <http://nmviewwgc.cr.usgs.gov/viewer.htm> Go Links

The National Map Viewer

Overview
Zoom In
Zoom Out
Zoom Region
Full Extent
Re-center
Identify
Find Place
Elevation
Measure
Clear
Print
Download
Options
Help

Scale

Layers

☐ LAND COVER
☐ USGS Current Green
☐ USGS NLCD
☒ **Orthoimagery**
☐ DOQ
No layers available.
INDEX/STATUS (IMAGERY)
☐ Hi-Res Ortho Index
☐ Index of View Only H
☒ OTHER IMAGERY
☒ UA_ORTHO_Tampa0
☐ SATELLITE
☐ LANDSAT7
☐ LANDSAT7 Index
☐ SCANNED MAPS
No layers available.
Other
☒ **Structures**
☒ **Transportation**
☐ MISC. TRANSPORTATION
No layers available.
☐ RAILROADS
No layers available.
☐ ROADS
No layers available.

Redraw Map

Layer Metadata | Map Information | U.S. Forest Service | USGS | U.S. Fish & Wildlife Service | BLM

U.S. Department of the Interior, U.S. Geological Survey, Lakewood, CO, USA
URL: <http://nmviewwgc.cr.usgs.gov/>
Contact: National Map Team
Last modification: 01/30/2004

Map: -82° 22' 53", 27° 49' 44" -- NatGrid: 17R LL 63955 79015 (NAD83) -- ScaleFactor: 0 dec degrees/pixel

Internet

National Map Viewer - Microsoft Internet Explorer

File Edit View Favorites Tools Help

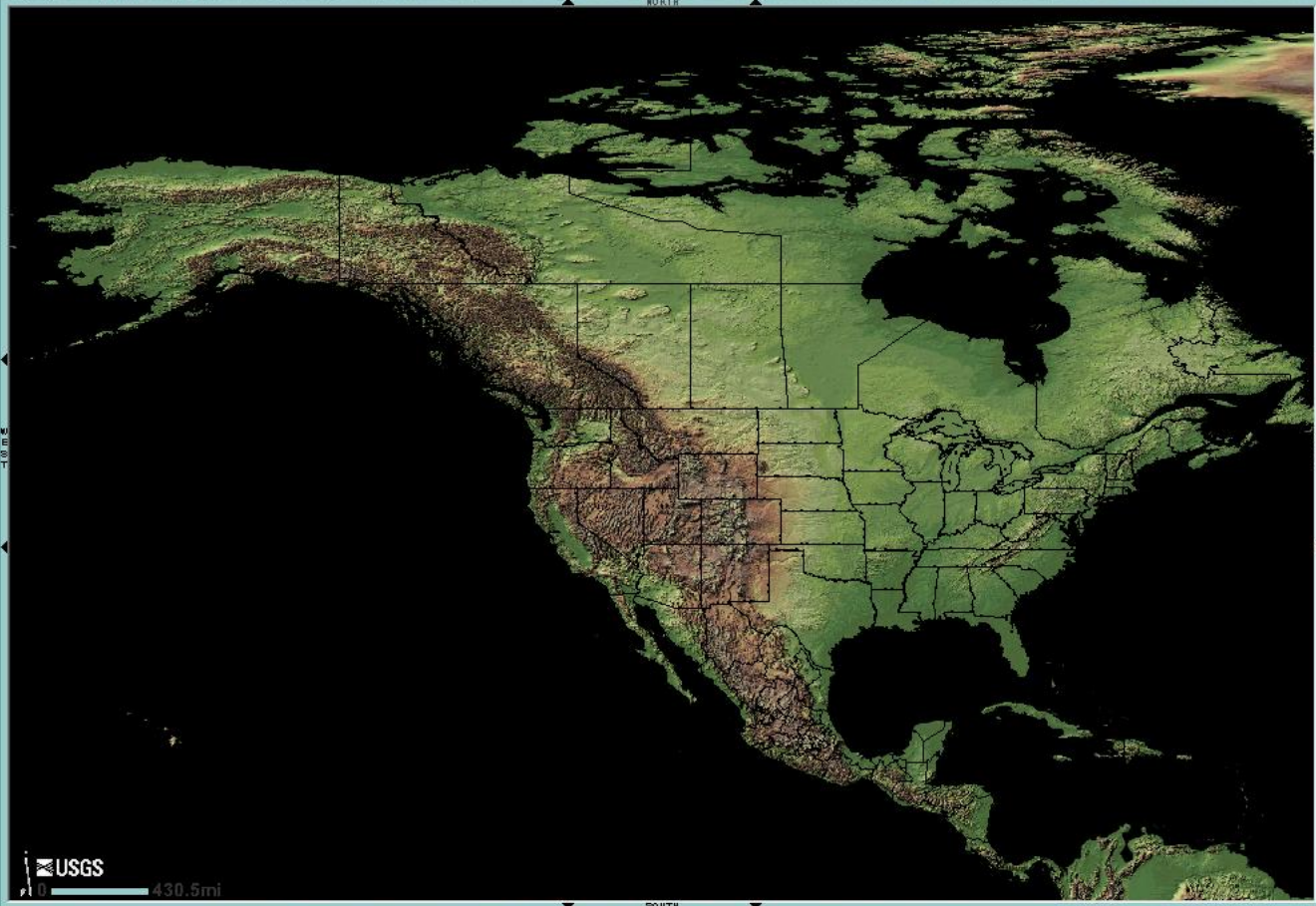
Back Forward Stop Home Search Favorites Media

Address <http://nmviewogc.cr.usgs.gov/viewer.htm> Go Links »

USGS The National Map

The National Map Viewer

- Overview
- Zoom In
- Zoom Out
- Zoom
- Region
- Full Extent
- Re-center
- Identify
- Find Place
- Elevation
- Measure
- Clear
- Print
- Download
- Options
- Help



Scale

Layers Legend

Visible

- Boundaries
- Elevation
- Other
- Orthoimagery
- Land Use/Land Cover
- Transportation
- Geographic Names
- Administrative
- Hydrography
- Structures

Redraw Map

USGS 430.5mi

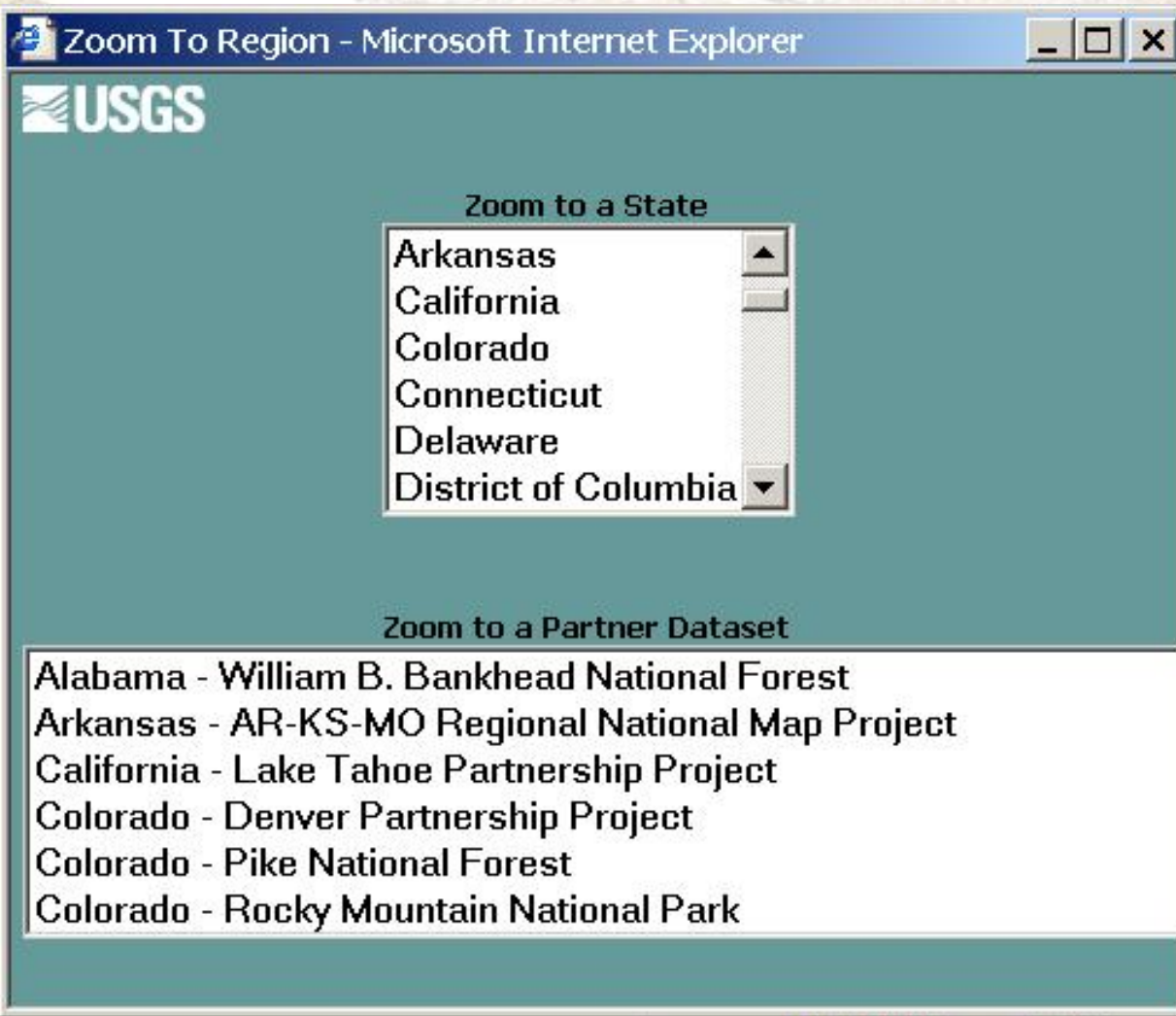
Layer Metadata | Map Information | USGS | U.S. Forest Service

U.S. Department of the Interior, U.S. Geological Survey, Lakewood, CO, USA
URL: <http://nmviewogc.cr.usgs.gov/>
Contact: National Map Team
Last modification: 01/30/2004

FIRSTGOV
The First Step to the U.S. Government

Map: -149° 48' 59" , 82° 22' 30" -- NatGrid: 6X VS 58296 47706 (NAD83) -- ScaleFactor: 0.1173 dec degrees/pixel

Internet



National Map Viewer - Microsoft Internet Explorer

File Edit View Favorites Tools Help

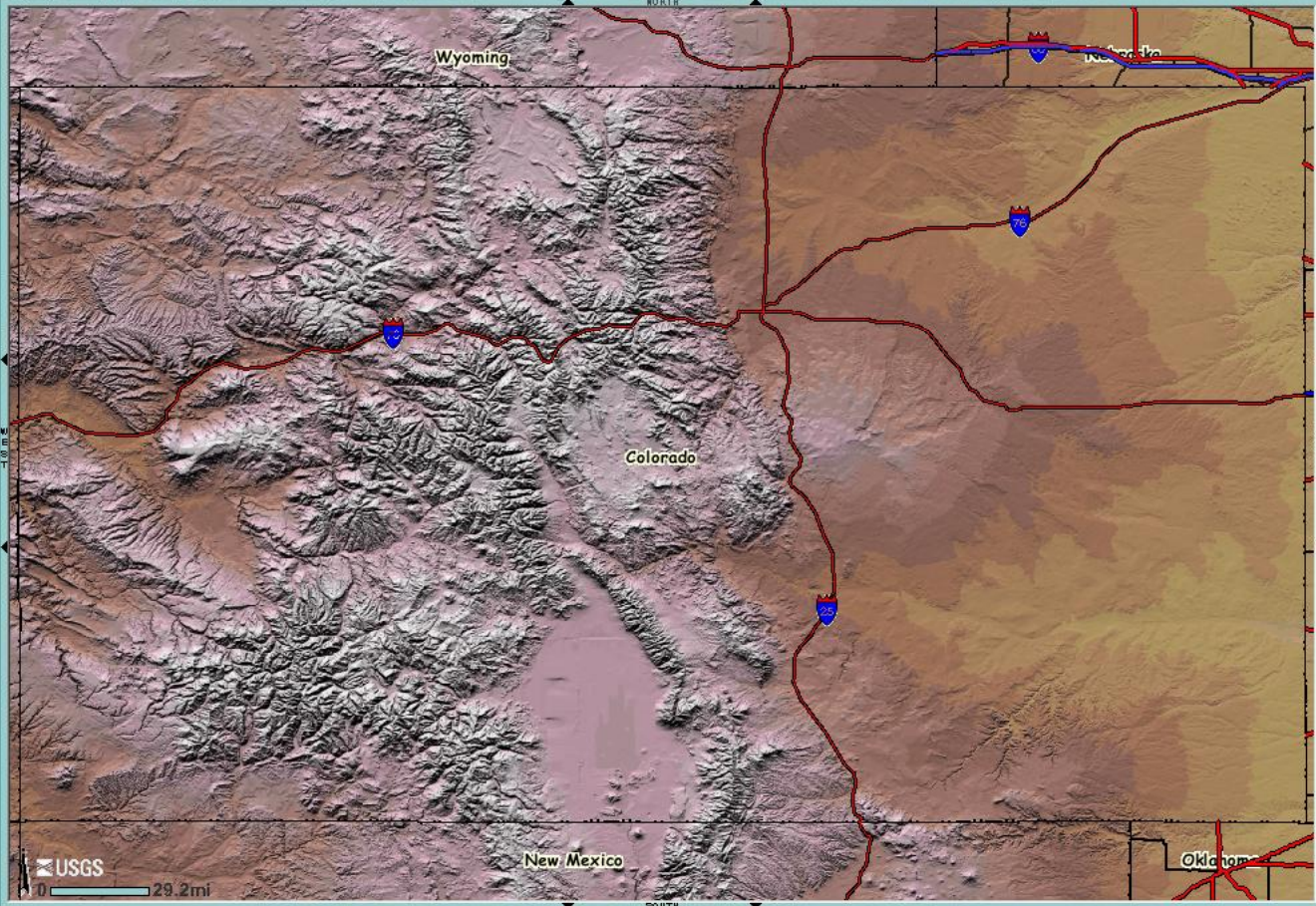
Back Forward Stop Home Search Favorites Media

Address <http://nmviewogc.cr.usgs.gov/viewer.htm> Go Links

USGS The National Map

The National Map Viewer

- Overview
- Zoom In
- Zoom Out
- Zoom
- Region
- Full Extent
- Re-center
- Identify
- GNIS Find Place
- Elevation
- Measure
- Clear
- Print
- Download
- Options
- Help



Scale

Layers Legend

Visible

- Boundaries
- Elevation
- Other
- Orthoimagery
- Land Use/Land Cover
- Transportation
- Geographic Names
- Administrative
- Hydrography
- Structures

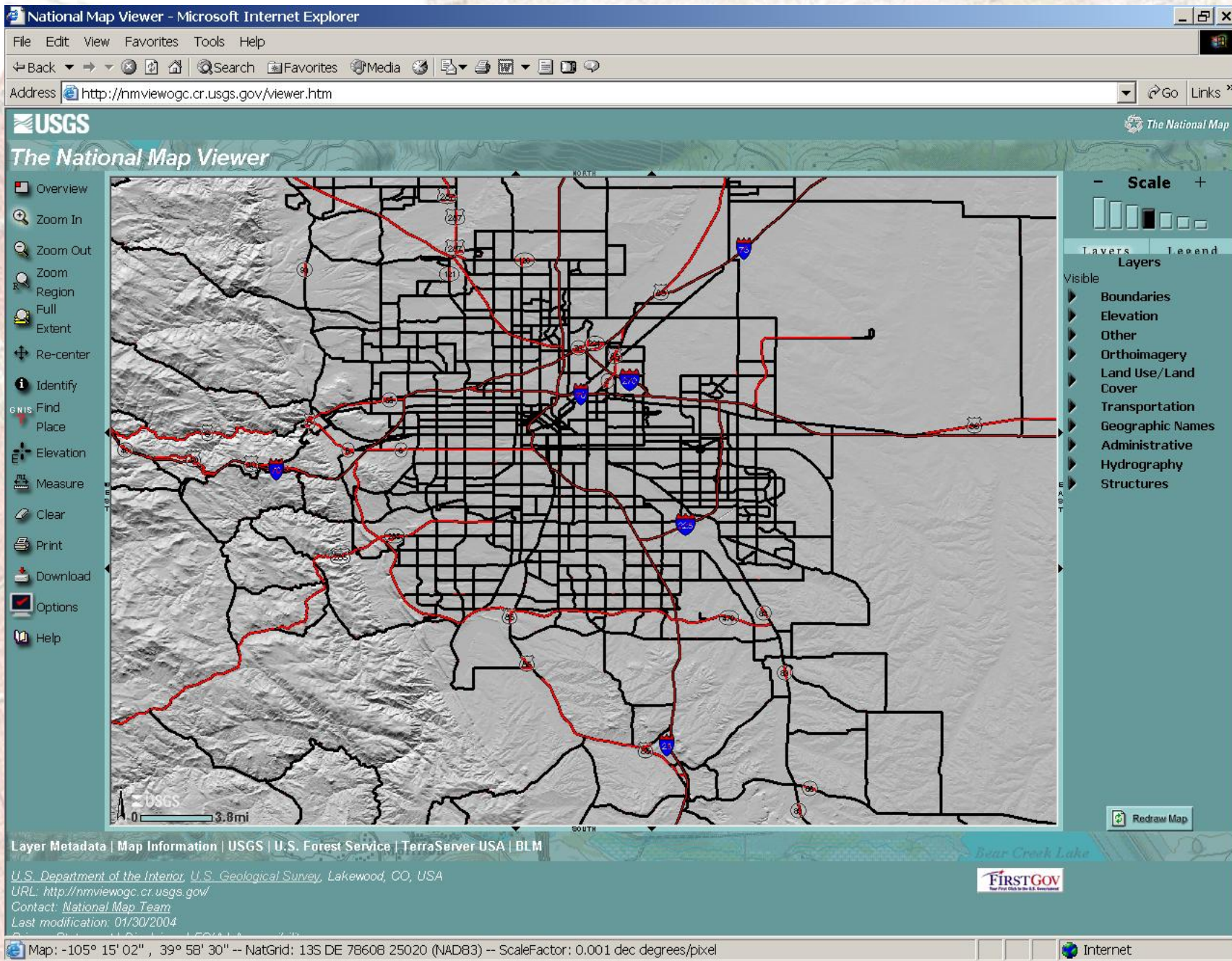
Redraw Map

Layer Metadata | Map Information | USGS | AGRC | U.S. Forest Service | Oklahoma GEO | Nebraska Dept. of Natural Resources | RNMP | TerraServer USA | BLM

U.S. Department of the Interior, U.S. Geological Survey, Lakewood, CO, USA
URL: <http://nmviewogc.cr.usgs.gov/>
Contact: National Map Team
Last modification: 01/30/2004

Map: -107° 49' 30", 41° 17' 09" -- NatGrid: 13T BF 63438 74330 (NAD83) -- ScaleFactor: 0.0072 dec degrees/pixel

Internet



National Map Viewer - Microsoft Internet Explorer

File Edit View Favorites Tools Help

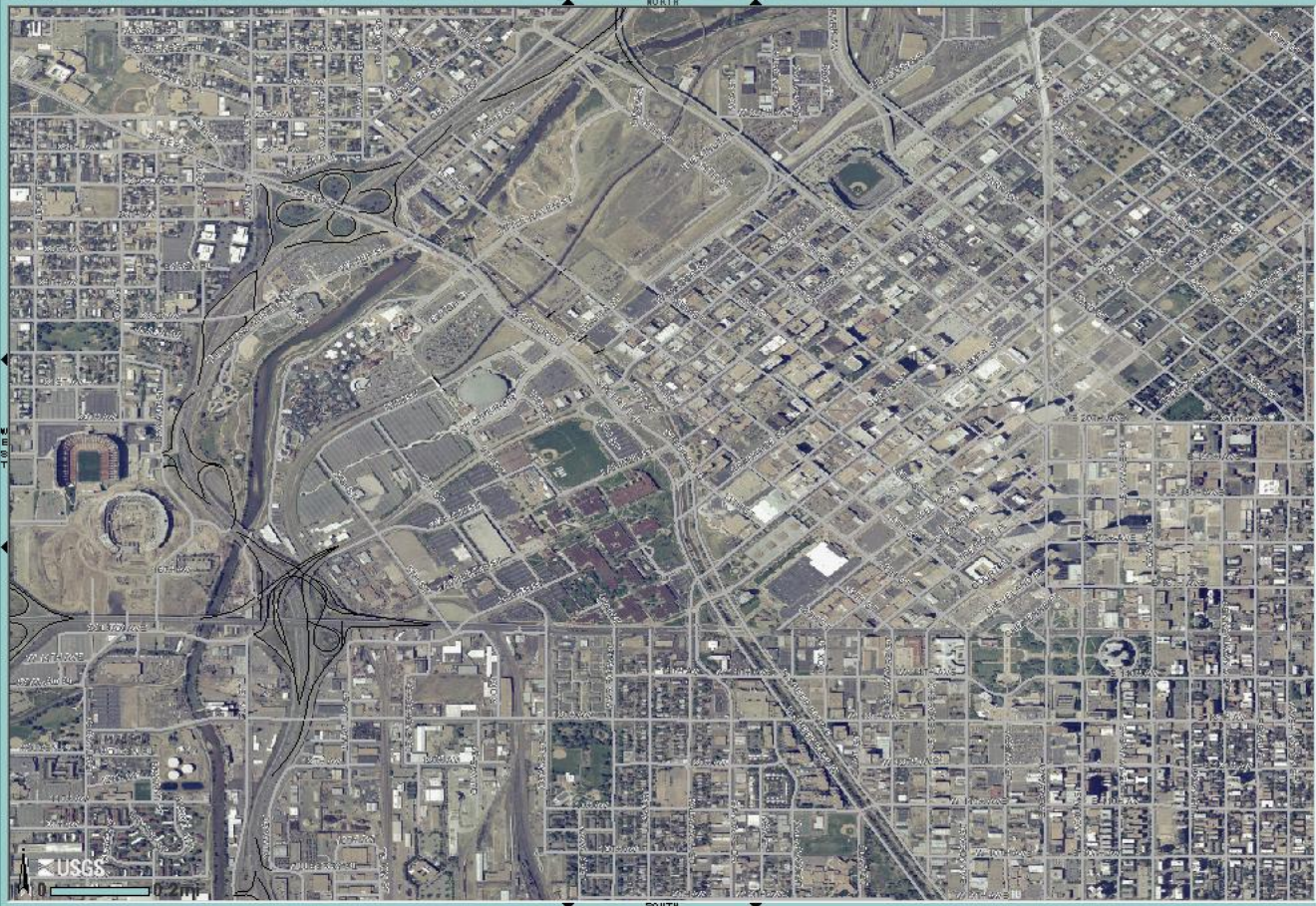
Back Forward Stop Home Search Favorites Media Print View Source Help

Address <http://nmviewogc.cr.usgs.gov/viewer.htm> Go Links

USGS The National Map

The National Map Viewer

- Overview
- Zoom In
- Zoom Out
- Zoom
- Region
- Full
- Extent
- Re-center
- Identify
- Find Place
- Elevation
- Measure
- Clear
- Print
- Download
- Options
- Help



Scale

Layers Legend

- ☒ OTHER IMAGERY
- ☒ RTD color Orthophoto
- ☒ SATELLITE
- ☐ LANDSAT7
- ☐ LANDSAT7 Index
- ☐ SCANNED MAPS
- ☐ DRG (TerraServer US)
- ☒ Land Use/Land Cover
- ☒ Transportation
- ☐ MISC. TRANSPORTATION
- ☐ Miscellaneous Transp
- ☐ Miscellaneous Transp
- ☐ RAILROADS
- ☐ Railroad Stations and
- ☐ Railroads (Denver Pili
- ☒ ROADS
- ☐ Interstates (Denver P
- ☒ Local Roads (Denver
- ☐ Roads BTS
- ☐ State Routes (Denver
- ☐ US Routes (Denver P
- ☒ Geographic Names
- ☒ Administrative
- ☒ Hydrography
- ☒ Structures

Redraw Map

Layer Metadata | Map Information | USGS | U.S. Forest Service | TerraServer USA | BLM

U.S. Department of the Interior, U.S. Geological Survey, Lakewood, CO, USA
URL: <http://nmviewogc.cr.usgs.gov/>
Contact: National Map Team
Last modification: 01/30/2004

Map: -105° 00' 04" , 39° 44' 55" -- NatGrid: 13S DD 99897 99855 (NAD83) -- ScaleFactor: 0 dec degrees/pixel

Internet

National Map Viewer - Microsoft Internet Explorer

File Edit View Favorites Tools Help


Back Forward Stop Search Favorites Media Print View Source Help

Address <http://nmviewogc.cr.usgs.gov/viewer.htm> Go Links

USGS The National Map

The National Map Viewer

- Overview
- Zoom In
- Zoom Out
- Zoom
- Region
- Full
- Extent
- Re-center
- Identify
- GNIS Find Place
- Elevation
- Measure
- Clear
- Print
- Download
- Options
- Help



Scale

Layers Legend

- ☒ OTHER IMAGERY
- ☒ RTD color Orthophoto
- ☐ SATELLITE
- ☐ LANDSAT7
- ☐ LANDSAT7 Index
- ☐ SCANNED MAPS
- No layers available.
- Land Use/Land Cover**
- Transportation**
- ☐ MISC. TRANSPORTATION
- ☐ Miscellaneous Transp
- ☐ Miscellaneous Transp
- ☐ RAILROADS
- ☐ Railroad Stations and
- ☐ Railroads (Denver Pili
- ☒ ROADS
- ☐ Interstates (Denver P
- ☒ Local Roads (Denver
- ☐ Roads BTS
- ☐ State Routes (Denver
- ☐ US Routes (Denver P
- Geographic Names**
- Administrative**
- Hydrography**
- Structures**

Redraw Map

Layer Metadata | Map Information | USGS | U.S. Forest Service | TerraServer USA | BLM

U.S. Department of the Interior, U.S. Geological Survey, Lakewood, CO, USA
URL: <http://nmviewogc.cr.usgs.gov/>
Contact: National Map Team
Last modification: 01/30/2004

Map: -104° 59' 33", 39° 44' 43" -- NatGrid: 13S ED 00640 99482 (NAD83) -- ScaleFactor: 0 dec degrees/pixel

Internet

National Map Viewer - Microsoft Internet Explorer

File Edit View Favorites Tools Help

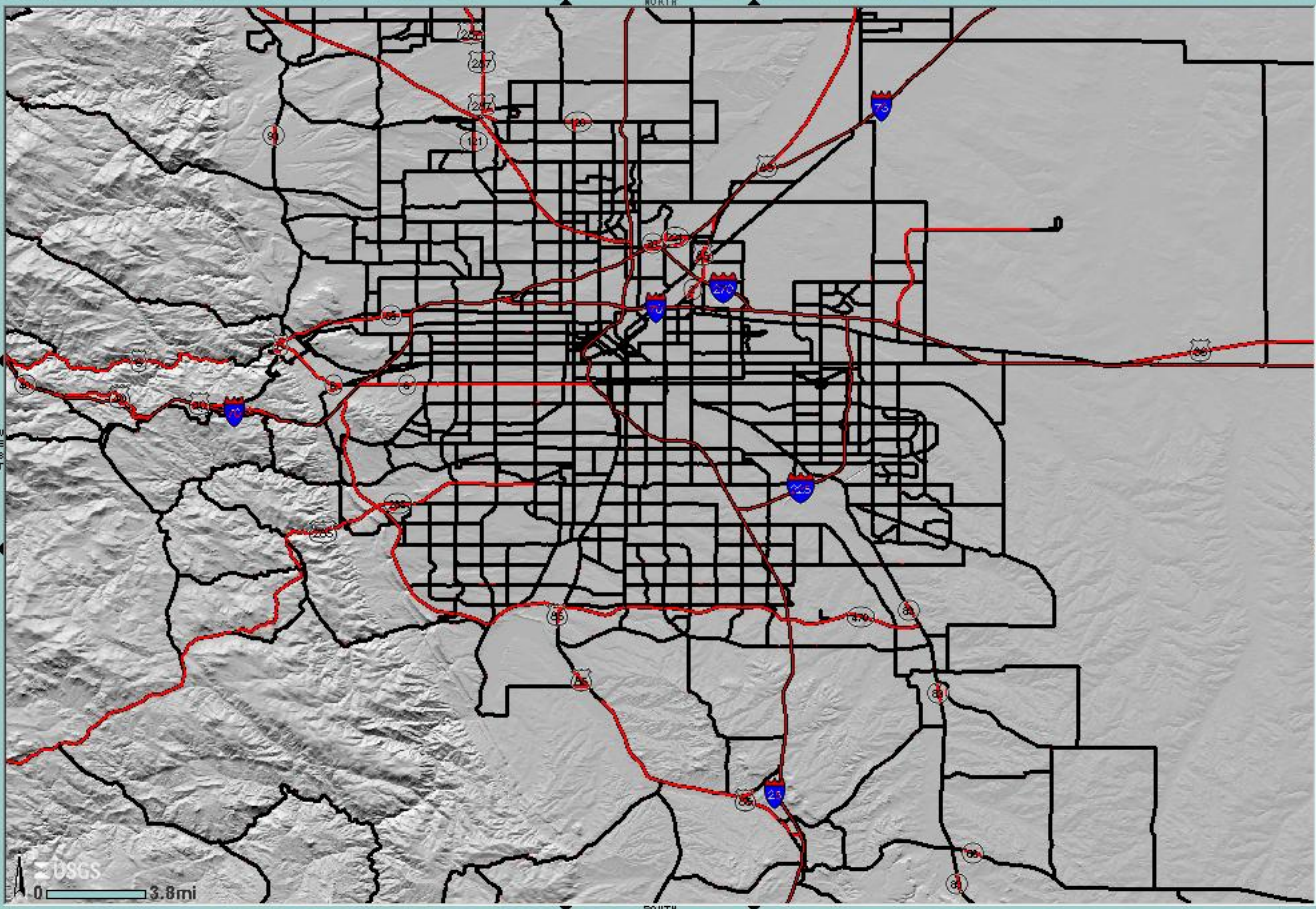
Back Forward Stop Home Search Favorites Media Print View Source Help

Address <http://nmviewogc.cr.usgs.gov/viewer.htm> Go Links

USGS The National Map

The National Map Viewer

- Overview
- Zoom In
- Zoom Out
- Zoom
- Region
- Full Extent
- Re-center
- Identify
- GNIS Find Place
- Elevation
- Measure
- Clear
- Print
- Download
- Options
- Help



Scale

Layers Legend

Visible

- ▶ Boundaries
- ▶ Elevation
- ▶ Other
- ▶ Orthoimagery
- ▶ Land Use/Land Cover
- ▶ Transportation
- ▶ Geographic Names
- ▶ Administrative
- ▶ Hydrography
- ▶ Structures

Redraw Map

Layer Metadata | Map Information | USGS | U.S. Forest Service | TerraServer USA | BLM

U.S. Department of the Interior, U.S. Geological Survey, Lakewood, CO, USA
URL: <http://nmviewogc.cr.usgs.gov/>
Contact: National Map Team
Last modification: 01/30/2004

FIRSTGEOV
The First Look at the Earth's Surface

Map: -105° 15' 02" , 39° 58' 30" -- NatGrid: 13S DE 78608 25020 (NAD83) -- ScaleFactor: 0.001 dec degrees/pixel

Internet

National Map Viewer - Microsoft Internet Explorer

File Edit View Favorites Tools Help

Back Forward Stop Search Favorites Media Print View Map Download Help

Address <http://nmviewogc.cr.usgs.gov/viewer.htm> Go Links

USGS The National Map

The National Map Viewer

- Overview
- Zoom In
- Zoom Out
- Zoom
- Region
- Full
- Extent
- Re-center
- Identify
- Find
- Place
- Elevation
- Measure
- Clear
- Print
- Download
- Options
- Help

Scale

Layers Legend

- ☐ OTHER IMAGERY
- ☐ RTD Color Orthophoto
- ☐ SATELLITE
- ☐ LANDSAT7
- ☐ LANDSAT7 Index
- ☒ SCANNED MAPS
- ☒ DRG (TerraServer US)
- ☒ Land Use/Land Cover
- ☒ Transportation
 - ☐ MISC. TRANSPORTATION
 - ☐ Miscellaneous Transp
 - ☐ Miscellaneous Transp
- ☐ RAILROADS
 - ☐ Railroad Stations and
 - ☐ Railroads (Denver P
- ☐ ROADS
 - ☐ Interstates (Denver P
 - ☐ Local Roads (Denver
 - ☐ Roads BTS
 - ☐ State Routes (Denver
 - ☐ US Routes (Denver P
- ☒ Geographic Names
 - ☒ Administrative
 - ☒ Hydrography
 - ☒ Structures

Redraw Map

Layer Metadata | Map Information | USGS | U.S. Forest Service | TerraServer USA | BLM

U.S. Department of the Interior, U.S. Geological Survey, Lakewood, CO, USA
URL: <http://nmviewogc.cr.usgs.gov/>
Contact: National Map Team
Last modification: 01/30/2004

Map: -105° 07' 31" , 39° 43' 54" -- NatGrid: 13S DD 89257 97989 (NAD83) -- ScaleFactor: 0 dec degrees/pixel

Internet

National Map Viewer - Microsoft Internet Explorer

File Edit View Favorites Tools Help

Back Forward Stop Home Search Favorites Media Print View Source Help

Address <http://nmviewogc.cr.usgs.gov/viewer.htm> Go Links

USGS The National Map

The National Map Viewer

- Overview
- Zoom In
- Zoom Out
- Zoom
- Region
- Full Extent
- Re-center
- Identify
- GNIS Find Place
- Elevation
- Measure
- Clear
- Print
- Download
- Options
- Help

Scale

Layers Legend

- Orthoimagery
 - ☐ DOQ
 - ☐ DOQ (TerraServer US)
 - ☒ OTHER IMAGERY
 - ☒ RTD color Orthophoto
 - ☐ SATELLITE
 - ☐ LANDSAT7
 - ☐ LANDSAT7 Index
 - ☐ SCANNED MAPS
 - ☐ DRG (TerraServer US)
- Land Use/Land Cover
- Transportation
 - ☐ MISC. TRANSPORTATION
 - ☐ Miscellaneous Transp
 - ☐ Miscellaneous Transp
 - ☐ RAILROADS
 - ☐ Railroad Stations and
 - ☐ Railroads (Denver Pili
 - ☐ ROADS
 - ☐ Interstates (Denver P
 - ☐ Local Roads (Denver
 - ☐ Roads BTS
 - ☐ State Routes (Denver
 - ☐ US Routes (Denver P
- Geographic Names

Redraw Map

Layer Metadata | Map Information | USGS | U.S. Forest Service | TerraServer USA | BLM

U.S. Department of the Interior, U.S. Geological Survey, Lakewood, CO, USA
URL: <http://nmviewogc.cr.usgs.gov/>
Contact: National Map Team
Last modification: 01/30/2004

Map: -105° 07' 50" , 39° 44' 05" -- NatGrid: 13S DD 88805 98317 (NAD83) -- ScaleFactor: 0 dec degrees/pixel

Internet

National Map Viewer - Microsoft Internet Explorer

File Edit View Favorites Tools Help

Back Forward Stop Reload Home Search Favorites Media Print View Source Help

Address http://nmviewogc.cr.usgs.gov/viewer.htm Go Links

USGS

The National Map

Overview

Zoom In

Zoom Out

Zoom

Region

Full

Extent

Re-center

Identify

GNIS Find Place

Elevation

Measure

Clear

Print

Download

Options

Help



Scale

Layers Legend

☒ OTHER IMAGERY

☒ RTD color Orthophoto

☐ SATELLITE

☐ LANDSAT7

☐ LANDSAT7 Index

☐ SCANNED MAPS

No layers available.

☒ Land Use/Land Cover

☒ Transportation

☐ MISC. TRANSPORTATION

☐ Miscellaneous Transp

☐ Miscellaneous Transp

☐ RAILROADS

☐ Railroad Stations and

☐ Railroads (Denver Pili

☒ ROADS

☐ Interstates (Denver P

☒ Local Roads (Denver

☐ Roads BTS

☐ State Routes (Denver

☐ US Routes (Denver P

☒ Geographic Names

☒ Administrative

☒ Hydrography

☒ Structures

Redraw Map

Layer Metadata | Map Information | USGS | U.S. Forest Service | TerraServer USA | BLM

U.S. Department of the Interior, U.S. Geological Survey, Lakewood, CO, USA
URL: http://nmviewogc.cr.usgs.gov/
Contact: National Map Team
Last modification: 01/30/2004

Map: -105° 07' 38", 39° 42' 56" -- NatGrid: 13S DD 89106 96189 (NAD83) -- ScaleFactor: 0 dec degrees/pixel

Internet

National Map Viewer - Microsoft Internet Explorer

File Edit View Favorites Tools Help

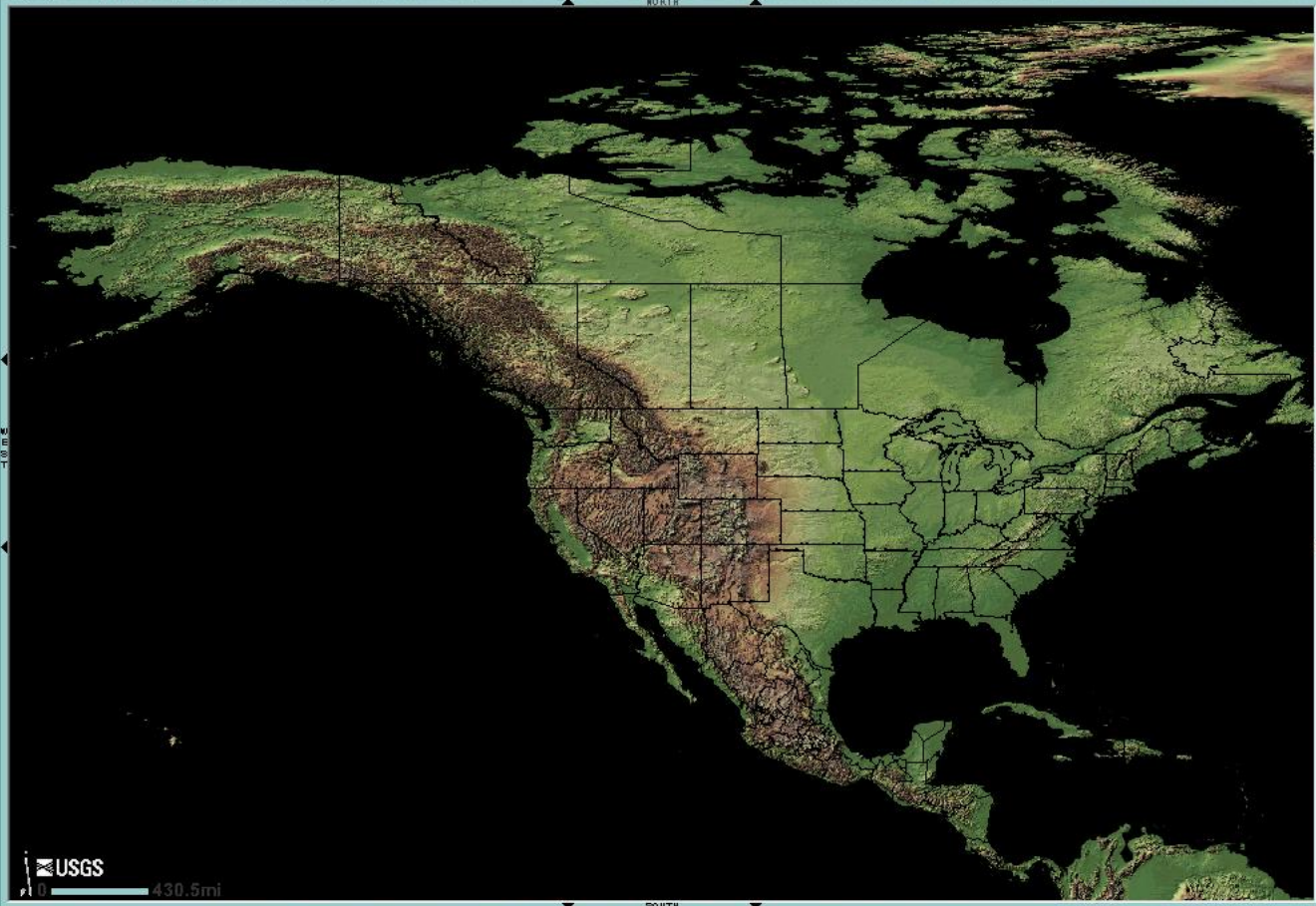
Back Forward Stop Home Search Favorites Media

Address <http://nmviewogc.cr.usgs.gov/viewer.htm> Go Links »

USGS The National Map

The National Map Viewer

- Overview
- Zoom In
- Zoom Out
- Zoom
- Region
- Full Extent
- Re-center
- Identify
- Find Place
- Elevation
- Measure
- Clear
- Print
- Download
- Options
- Help



Scale

Layers Legend

Visible

- ▶ Boundaries
- ▶ Elevation
- ▶ Other
- ▶ Orthoimagery
- ▶ Land Use/Land Cover
- ▶ Transportation
- ▶ Geographic Names
- ▶ Administrative
- ▶ Hydrography
- ▶ Structures

Redraw Map

USGS 430.5mi

Layer Metadata | Map Information | USGS | U.S. Forest Service

U.S. Department of the Interior, U.S. Geological Survey, Lakewood, CO, USA
URL: <http://nmviewogc.cr.usgs.gov/>
Contact: National Map Team
Last modification: 01/30/2004

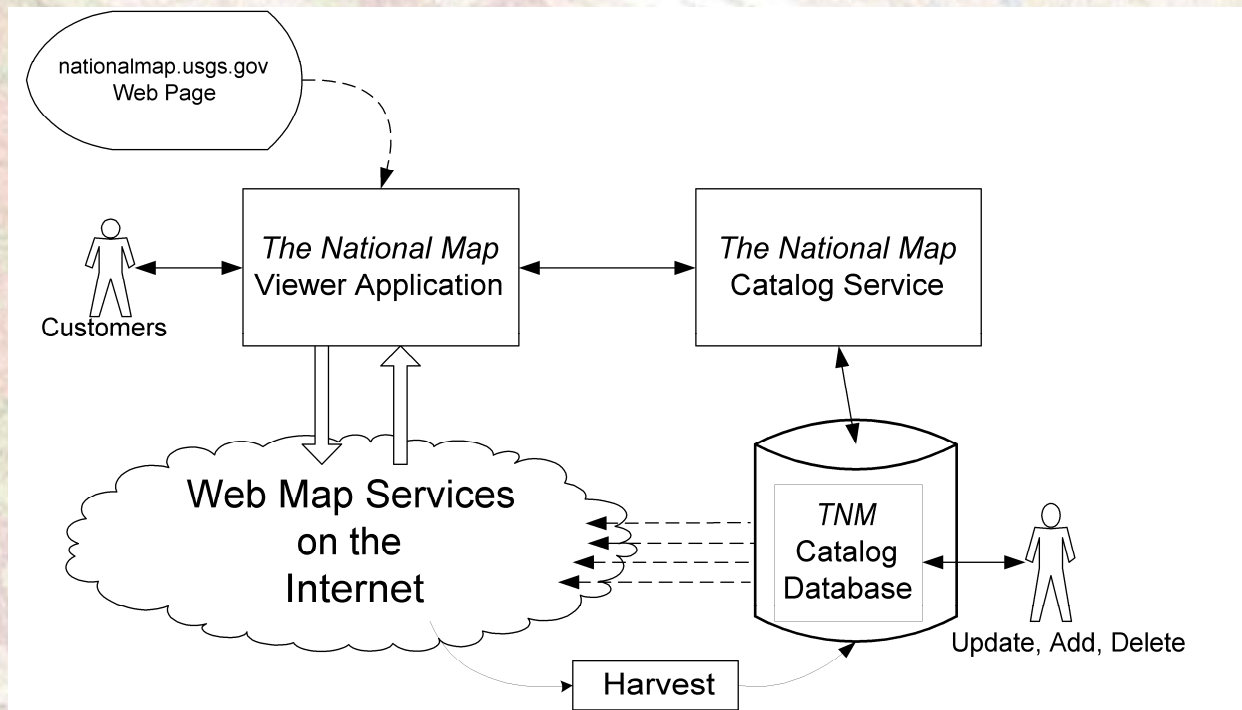
FIRSTGOV
The First Step to a Better U.S. Government

Map: -149° 48' 59" , 82° 22' 30" -- NatGrid: 6X VS 58296 47706 (NAD83) -- ScaleFactor: 0.1173 dec degrees/pixel

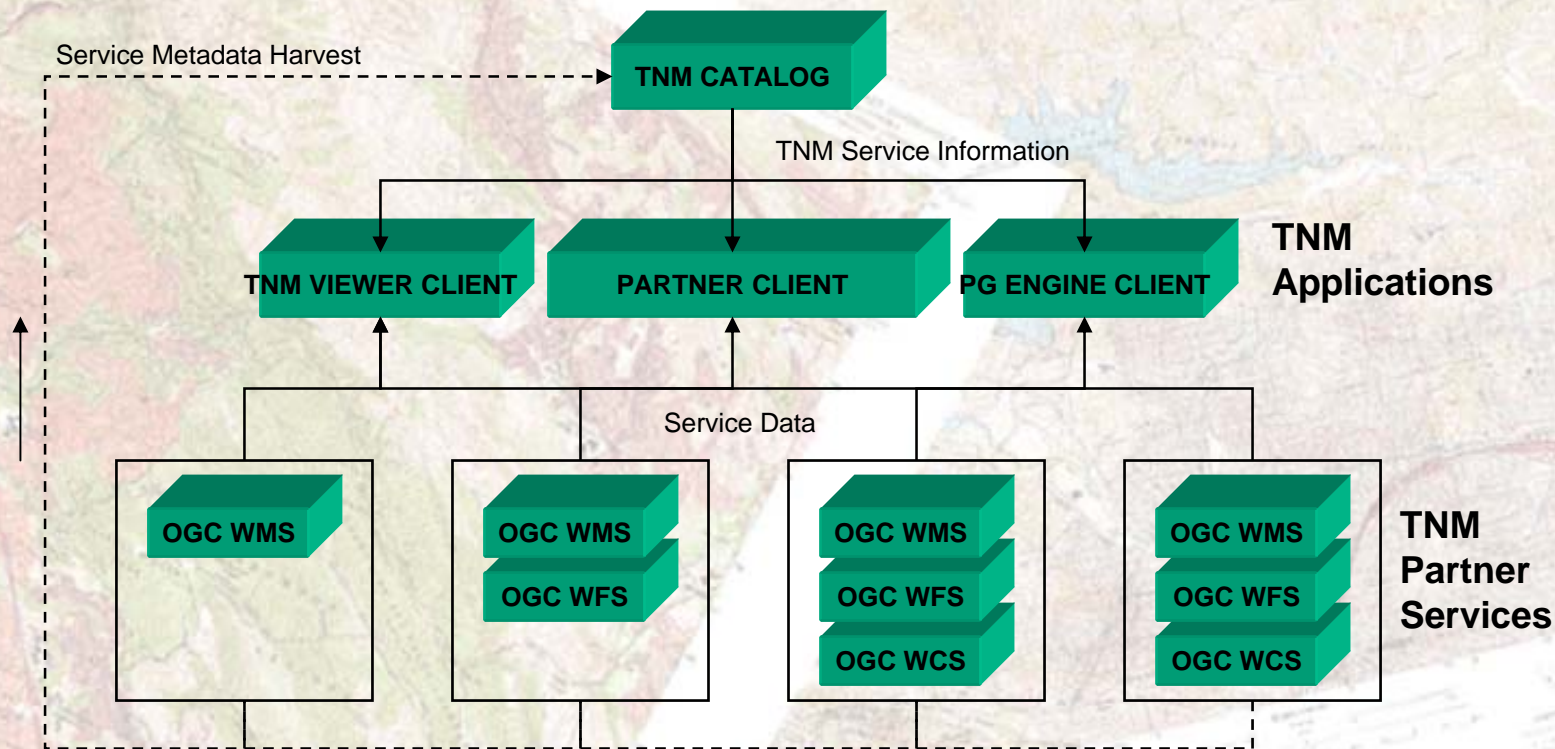
Internet

Overview of The National Map System

A Catalog-based Approach.

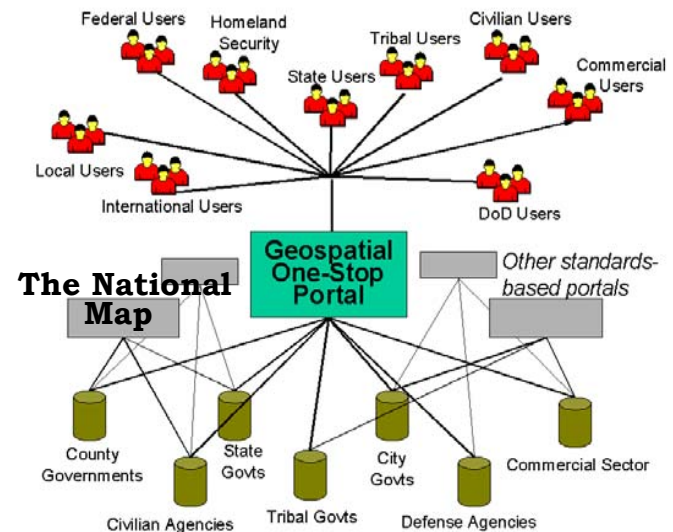


How the Catalog Works



Integration with GOS Portal

- *The National Map* is another “standards-based Portal”- registered with GOS as Catalog Service
- Uses standardized protocol for access: OGC style request with XML/DTD response
- Additional Functionality:
 - “national coverage”
 - “consistency”
 - “maintained data”
 - “service interface”



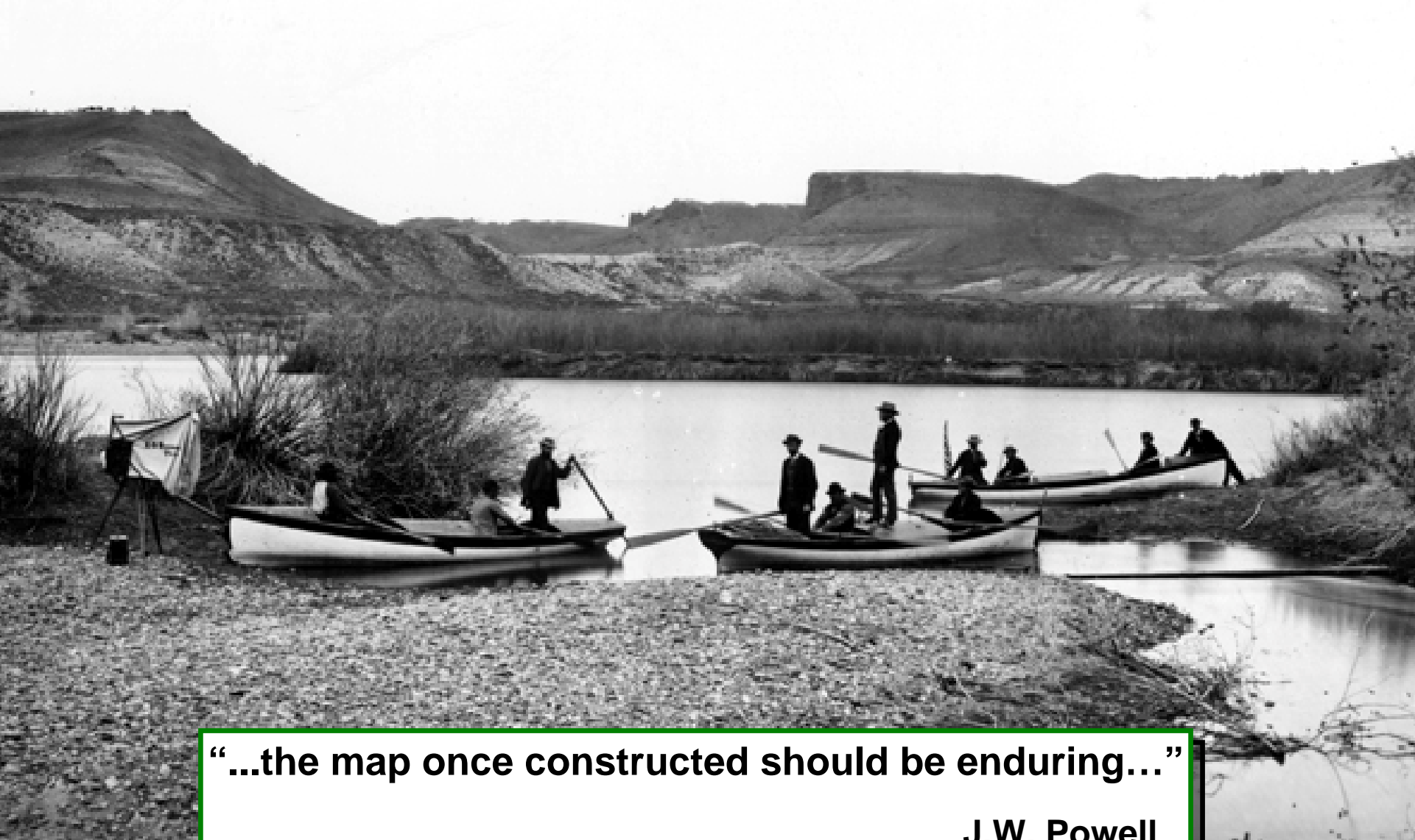
From William Morris Davis - 1913

- No publications of the Survey have had a greater general usefulness...The change from geographic barbarism of that earlier day to the relative civilization of the present time is due more to Powell than to any other one man.*



Our Challenge

- What will define the next shift from “barbarism to relative civilization” for national mapping?
 - ✓ Fully developed *National Map*
 - ✓ Developing and maintaining robust IT infrastructure
 - ✓ Meeting the security challenges of a loosely coupled, partner network



“...the map once constructed should be enduring...”

J.W. Powell

www.nationalmap.gov