



U.S. Department of the Interior

Enterprise Geographic Information Management

The Enterprise Geographic Information Management (EGIM) [1] initiative of the U.S. Department of the Interior (DOI) is a framework for the standardization and coordination of geographic information systems (GIS) activities across the department's bureaus. The purpose of the EGIM team is to provide strategic leadership for that enterprise GIS effort within DOI. A DOI team of bureau representatives and subject matter experts collaborate to determine the need for standardization, GIS initiatives, direction on policy, program initiatives, funding priorities, and organizational needs, as well as the coordination of GIS activities among bureau programs and areas. EGIM is a joint effort with all the DOI bureaus.

perform services on overlapping geographic areas. In fulfilling their mission, bureaus often depend on, or provide, geospatial information along with related geospatial technologies and services. From the creation of maps to the analysis of potential flooding from a hurricane, location information is used for a wide variety of purposes within DOI and by our numerous outside partners (for example, public, states, and counties). With an infusion of mobile, wireless technology, this information can be delivered anytime, anywhere (see Figure 1).

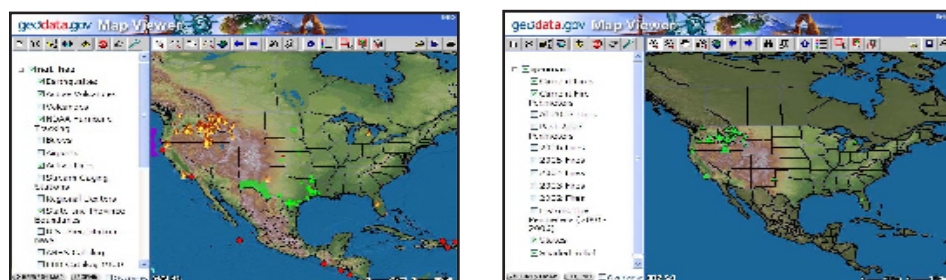
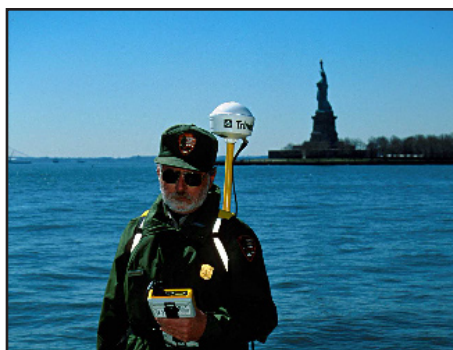


Figure 1. Do you know? You can use the web to find a map or information about many places in the United States? Go to <http://www.geodata.gov> and explore the possibilities.



Ellis Island mapping with GPS
(Credit: NPS)

Of all the departments within the Federal government, DOI is arguably the one most closely tied to the land. DOI is chartered with managing and protecting the Nation's resources [2], which are geographic in nature (for example, National Parks, Mineral Resources, and Lands Management). Most of the services provided by DOI program and mission areas are associated with a specific location or geographic area. Tracking, providing, and improving the delivery of these services to the public and partners require that information about such locations be collected and managed by the various bureaus. Multiple DOI programs often

DOI's business activities depend on geospatial information—knowing where things are and understanding how they relate to one another. Location information brings data to life and adds value because of the capability of the geospatial technology to generate graphic representations of features to produce a map. This technology helps provide the spatial context that allow for visualization of data, management of information, and data analysis to support DOI's business functions and mission. EGIM provides the ability to more effectively coordinate and support geospatial technologies, sponsoring interoperability and cost effectiveness for each of the bureaus within the DOI (see Figure 2).

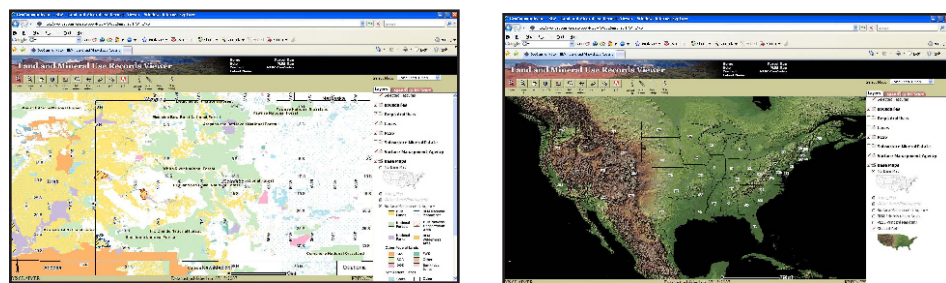


Figure 2. Do you know? You can use the BLM Land Manager Viewer to see a map of Federal Lands in the United States? Go to <http://www.geocommunicator.gov/> and explore the possibilities.

The role and function of the EGIM team primarily include strategic leadership for the following: Education and Training, GIS Software Deployment, Knowledge Base, Help Desk, GIS Database Support, Spatially Enabling DOI Business, Communications, System Architecture, Geospatial Services Model [3], Geospatial Modernization Blueprint (GMBP) [4], and Geospatial Line of Business (GeoLoB) [5].

The Enterprise Geospatial Information Management team consists of the following members:

Project Lead – USGS – Bob Pierce, Senior Advisor National Geospatial Program Office

Project Manager – USGS – Leslie Armstrong, Central Region Deputy Director

AS-IA – Richard Moore, Geospatial Information Officer

BLM – Bob Bewley, Geosciences Program Manager

BLM – Tom Chatfield, Spatial Data Architect

BLM – George Heine, Mathematical Analyst

BOR – Lorri Peltz-Lewis, Regional Geospatial Database Administrator

BOR – Bruce Whitesell, Physical Scientist

FWS – Chris Lett, National GIS Coordinator

MMS – Leonard Coats, Business Automation GIS Development Team Lead

NPS – David Duran, IT Specialist, GIS Division

NPS – Joe Gregson, GIS Program Manager

OSM – Robert Welsh, Mobile Computing Team Lead

OSM – Alan Wilhelm, GIS Team Leader

USGS – Jacqueline Fahsholtz, Geospatial One-Stop Portal Administrator

USGS – Bob Matthias, IT Specialist, Energy Resources Program

References:

1. U.S. Department of the Interior, 2005, Enterprise Geographic Information Management, Fact Sheet. Available at <http://mms.nps.gov/gis/egim/documents/egim.pdf>
2. U.S. Department of the Interior, 2006, Department of Interior Mission Statement. Available at <http://www.doi.gov/secretary/mission.html>
3. U.S. Department of the Interior, 2007, Geospatial Services Model: Serving the Geographic Business Needs of the Interior. Available at <http://www.nps.gov/gis/egim/>
4. U.S. Department of the Interior, 2007, Geospatial Modernization Blueprint: Recommendations and Architectures, in press. Will be available at <http://www.nps.gov/gis/egim/>
5. Executive Office of the President of the United States, Office of Management and Budget, Presidential Initiatives, 2004, Geospatial Line of Business (GeoLoB). Available at <http://www.whitehouse.gov/omb/egov/c-6-8-glob.html>



Burning at Eastern Virginia Rivers National Wildlife Refuge (Credit: FWS)



Shasta Dam, Shasta, California (Credit: BOR)



Geospatial training class (Credit: NPS)

Websites of interest:

EGIM	http://www.nps.gov/gis/egim/
DOI	http://www.doi.gov/
Geospatial One-Stop (GOS)	http://www.geodata.gov
BIA	Temporarily offline
BLM	http://www.blm.gov/
GCDB	http://www.blm.gov/gcdb/
Geocommunicator	http://www.geocommunicator.gov/
NILS	http://www.blm.gov/nils/
BOR	http://www.usbr.gov
Dataweb	http://www.usbr.gov/dataweb/
FGDC	http://www.fgdc.gov/
FWS	http://www.fws.gov/
Geographic information	http://www.fws.gov/data/
MMS	http://www.mms.gov/
Maps	http://www.mms.gov/ld/Maps.htm
NPS	http://www.nps.gov
GIS	http://www.nps.gov/gis/
IMC	http://maps.nps.gov
OSM	http://www.tips.osmre.gov/
USGS	http://www.usgs.gov
National Map	http://nationalmap.usgs.gov/

Abbreviations and Acronyms:

AS-IA	Assistant Secretary—Indian Affairs (DOI)
BIA	Bureau of Indian Affairs (DOI)
BLM	Bureau of Land Management (DOI)
BOR	Bureau of Reclamation (DOI)
DOI	U.S. Department of the Interior
EGIM	Enterprise Geospatial Information Management
FGDC	Federal Geographic Data Committee
FWS	Fish and Wildlife Service
GCDB	Geographic Coordinates Data Base
GeoLoB	Geospatial Line of Business
GIS	Geographic Information Systems
GMBT	Geospatial Methodology for Business Transformation
GOS	Geospatial One-Stop
IMC	Interactive Map Center
MMS	Minerals Management Service (DOI)
NILS	National Integrated Lands System
NPS	National Park Service (DOI)
OSM	Office of Surface Mining (DOI)
USGS	U.S. Geological Survey (DOI)

For more information:

Further information on EGIM activities and programs can be obtained at <http://www.nps.gov/gis/egim/> or, contact Dr. Bob Pierce at 703-648-5231 or rrpierce@usgs.gov