



Enterprise Geographic Information Management

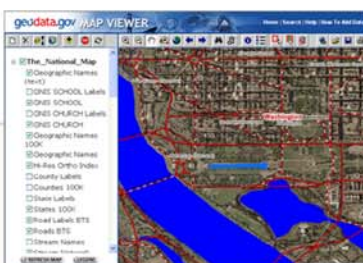
<http://www.nps.gov/gis/egim/>
EGIM Factsheet

The Enterprise Geographic Information Management (EGIM) initiative of the Department of the Interior (DOI) is a framework for the standardization and coordination of GIS activity across the Department's Bureaus. The purpose of the EGIM Team is to provide strategic leadership for that Enterprise GIS effort within DOI. A Departmental team of bureau representatives and area experts meet to collaboratively determine the need for standardization, implementation of GIS, direction on policy, programs, initiatives, funding priorities, organizational needs, as well as coordinating GIS activities among bureau, program and DOI areas. EGIM is a joint effort with all the bureaus.

Of all the Departments within the Federal government, the Department of the Interior is arguably the one most closely tied to the land. The resources the department is chartered with managing and protecting are geographic in nature (e.g., National Parks, Mineral Resources). The heart of geospatial technology is geographically-referenced data, meaning the data has location information, either an explicit geographic reference such as latitude and longitude coordinates, or an implicit reference such as an address, postal code, forest stand identifier, or road name. From the creation of maps to the analysis of potential flooding from a hurricane, location-aware information is used for many and varied purposes within Interior and by our numerous outside partners (e.g., public, states). With an infusion of mobile, wireless technology, this information can be delivered anytime, anywhere.

Location brings data to life and adds value because geospatial technology has the ability to store graphic representations of map features and add visualization to data and records that have a geographic component. This is critically important to all scientific projects, no matter how small or localized, which have a geospatial aspect, even if that aspect is only the location from which a sample was collected that produced a chemical analysis. Location-aware data can be used to draw inferences, trace relationships and make connections enabling real-time analyses of data.

Role and Function of EGIM Team: Education and training, GIS Software Deployment Knowledge Base, Help Desk, GIS Database Support, Spatially Enabling DOI Business, Communication, System Architecture



DID YOU KNOW?

You can use the web to find a map or information about many places in the US?
Go to geodata.gov and explore the possibilities.



EGIM Program

The EGIM Team will consist of the following representatives:

<u>Bureau</u>	<u>Active Representatives</u>
Bureau of Indian Affairs	Richard Moore
Bureau of Land Management	Bob Bewley, Leslie Cone
Bureau of Reclamation	Lorri Peltz-Lewis, Bruce Whitesell
Minerals Management Service	Leonard Coats
National Park Service	Leslie Armstrong, David Duran
Office of Surface Mining	Alan Wilhelm
U.S. Fish and Wildlife Service	Deb Green
U.S. Geological Survey	Bob Pierce

EGIM Lead contact:
Bob Pierce
770-409-7708
rrpierce@usgs.gov

Websites of Interest:

EGIM	http://www.nps.gov/gis/egim/
USGS	
Geospatial Data	http://ask.usgs.gov/digidata.html
National Map	http://nationalmap.usgs.gov/
Geospatial One-Stop	http://www.geo-one-stop.gov/
FGDC	http://fgdc.er.usgs.gov/
NPS	
GIS	http://www.nps.gov/gis/
IMC	http://maps.nps.gov
BOR	
BLM	
GCDB	http://www.blm.gov/gcdb/
Spatial Data Clearinghouse	http://www.blm.gov/nhp/what/geospatial/clearinghouse.htm
Geocommunicator	http://www.geocommunicator.gov/GeoComm/index.html
NILS	http://www.blm.gov/nils/
MMS	http://www.mms.gov/ld/Maps.htm
OSME	http://www.tips.osmre.gov/
FWS	http://www.fws.gov/data/
BIA	Off line
DOI	http://www.doi.gov/maps/maps.html



DID YOU KNOW?

You can use the BLM Land Manager Viewer to see a map of Federal Lands in the US? Go to <http://www.geocommunicator.gov/GeoComm/index.html> and explore the possibilities.