

# ESRI International User Conference

Senior Executive Seminar  
UNITED STATES DEPARTMENT OF  
THE INTERIOR  
Secretary Dirk Kempthorne

August 3, 2008





Senator and  
Astronaut:



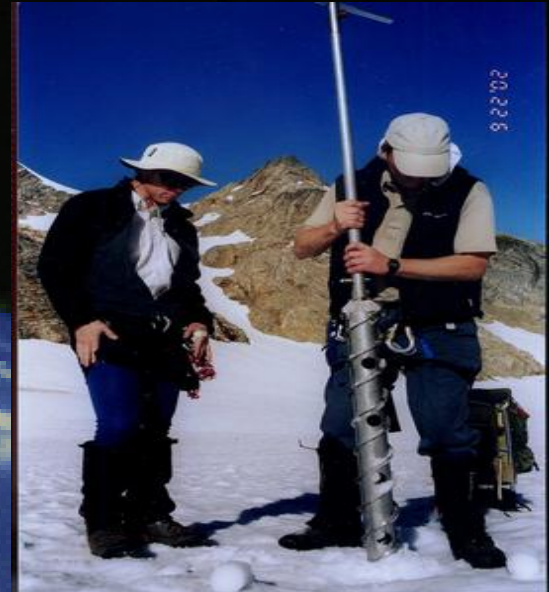
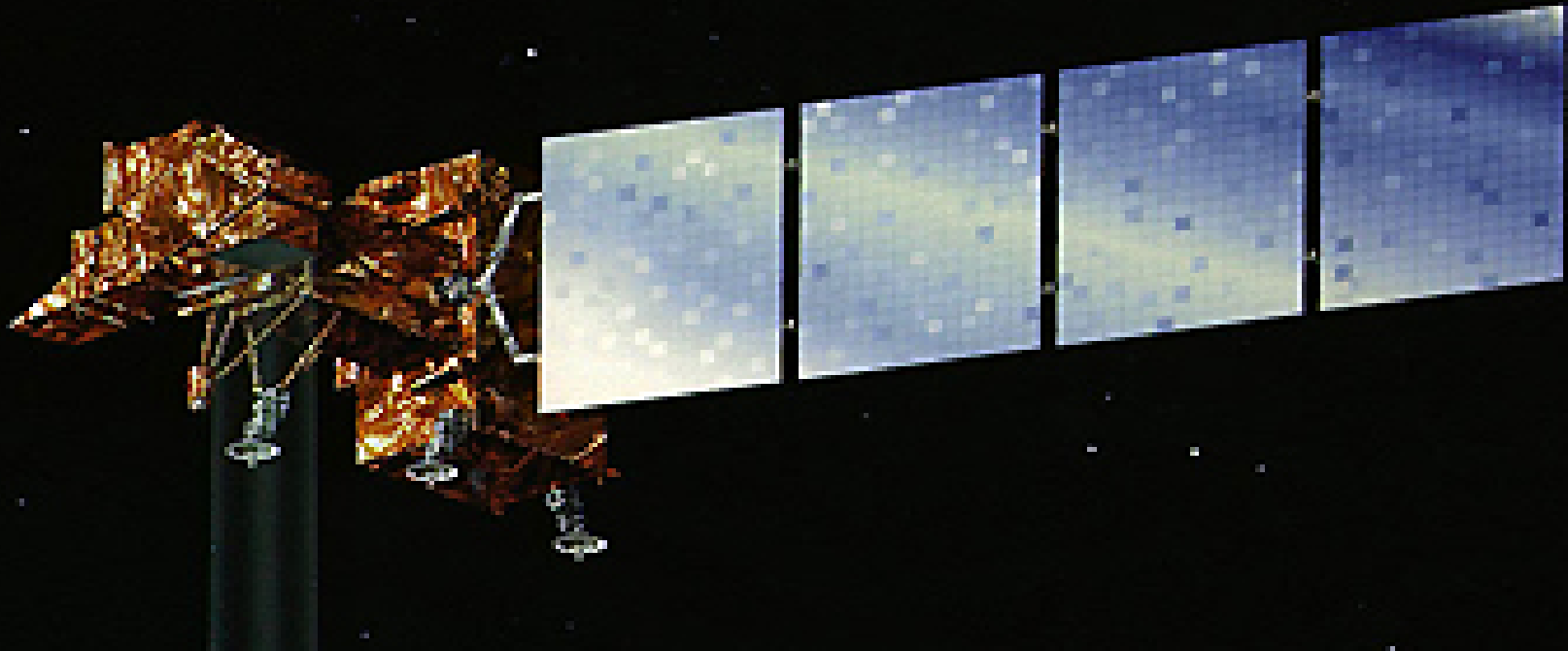
John Glenn



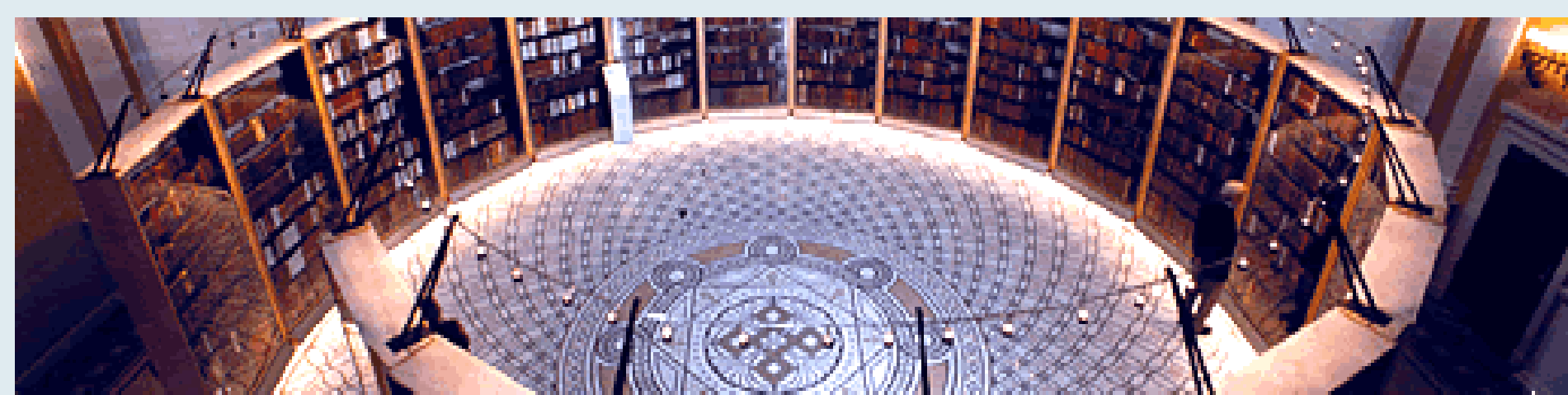












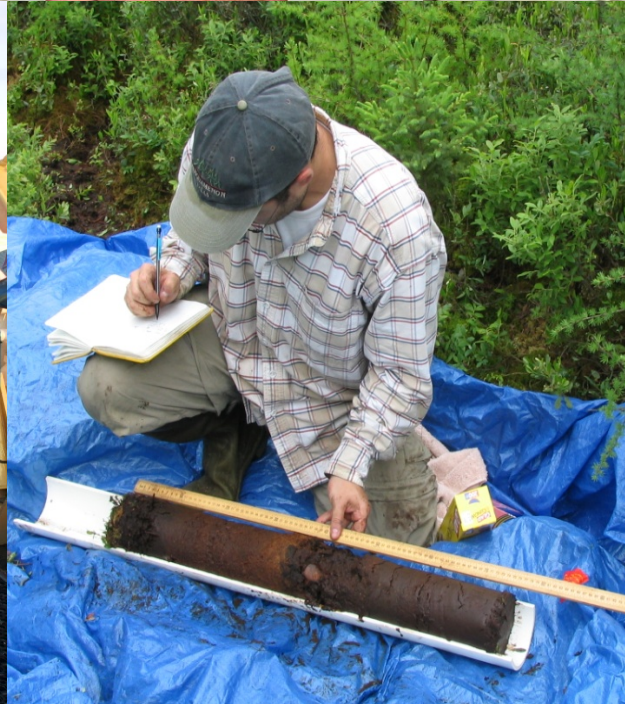
# Massive Repositories of Scientific Data











A b u n d a n t   S c i e n t i f i c   D a t a



# President Theodore "Teddy" Roosevelt

1908



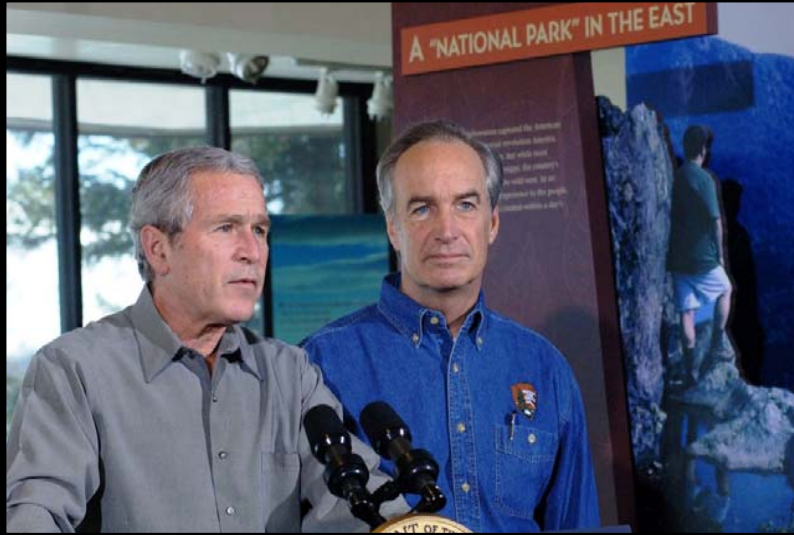




Conservation and Restoration



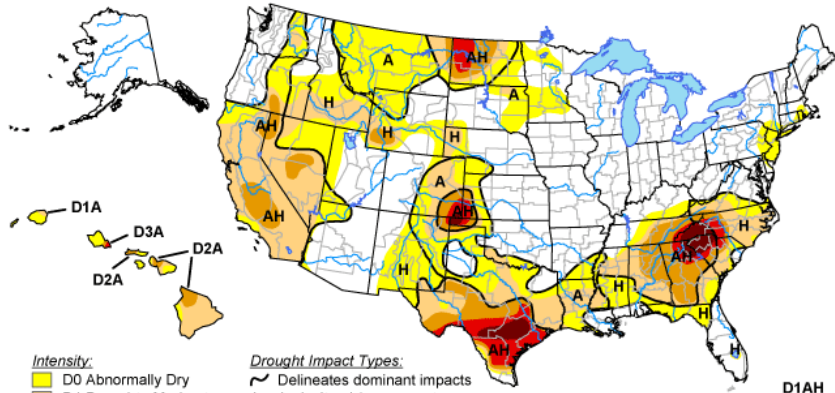
# N P S Centennial Initiative





# U.S. Drought Monitor

July 22, 2008  
Valid 8 a.m. EDT



**Intensity:**

- D0 Abnormally Dry
- D1 Drought - Moderate
- D2 Drought - Severe
- D3 Drought - Extreme
- D4 Drought - Exceptional

**Drought Impact Types:**

- Delineates dominant impacts
- A = Agricultural (crops, pastures, grasslands)
- H = Hydrological (water)

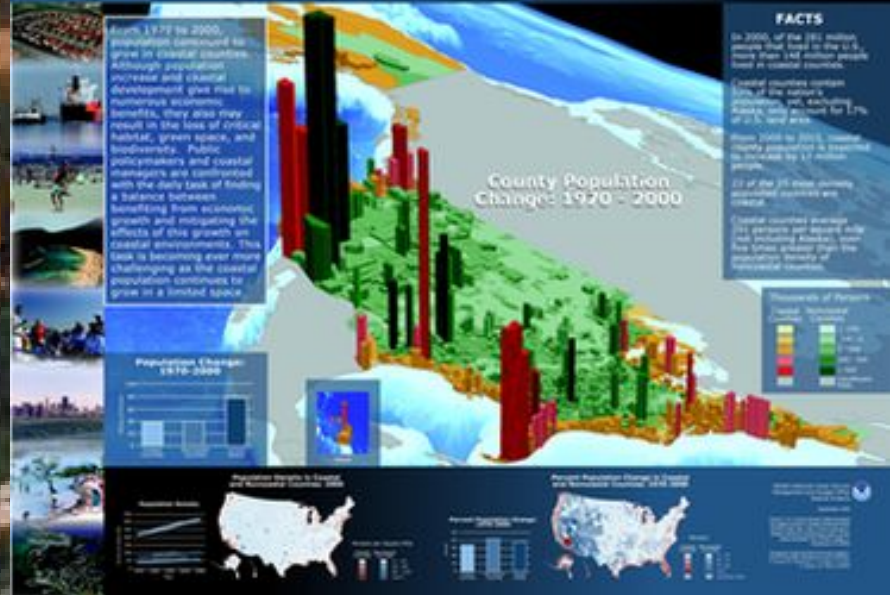
The Drought Monitor focuses on broad-scale conditions. Local conditions may vary. See accompanying text summary for forecast statements.

<http://drought.unl.edu/dm>



Released Thursday, July 24, 2008  
Author: Brad Rippey, U.S. Department of Agriculture

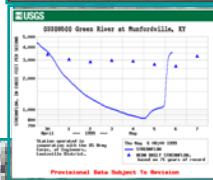
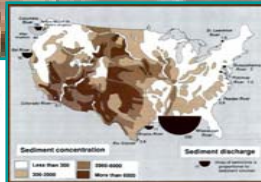
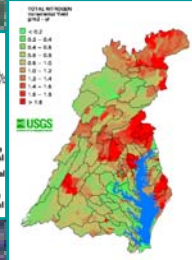
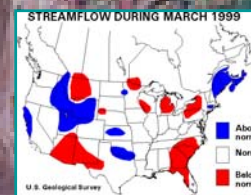
## THE CROWDED COAST: POPULATION TRENDS, 1970-2000



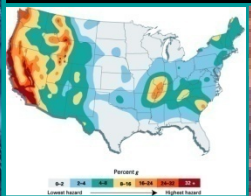
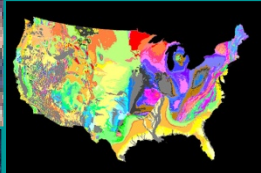
New and Evolving Challenges



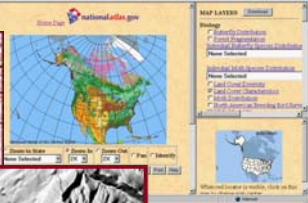
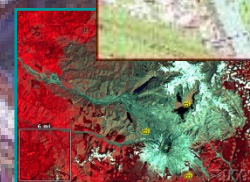
# Death Valley National Park



## Hydrologic Information



## Geologic Information



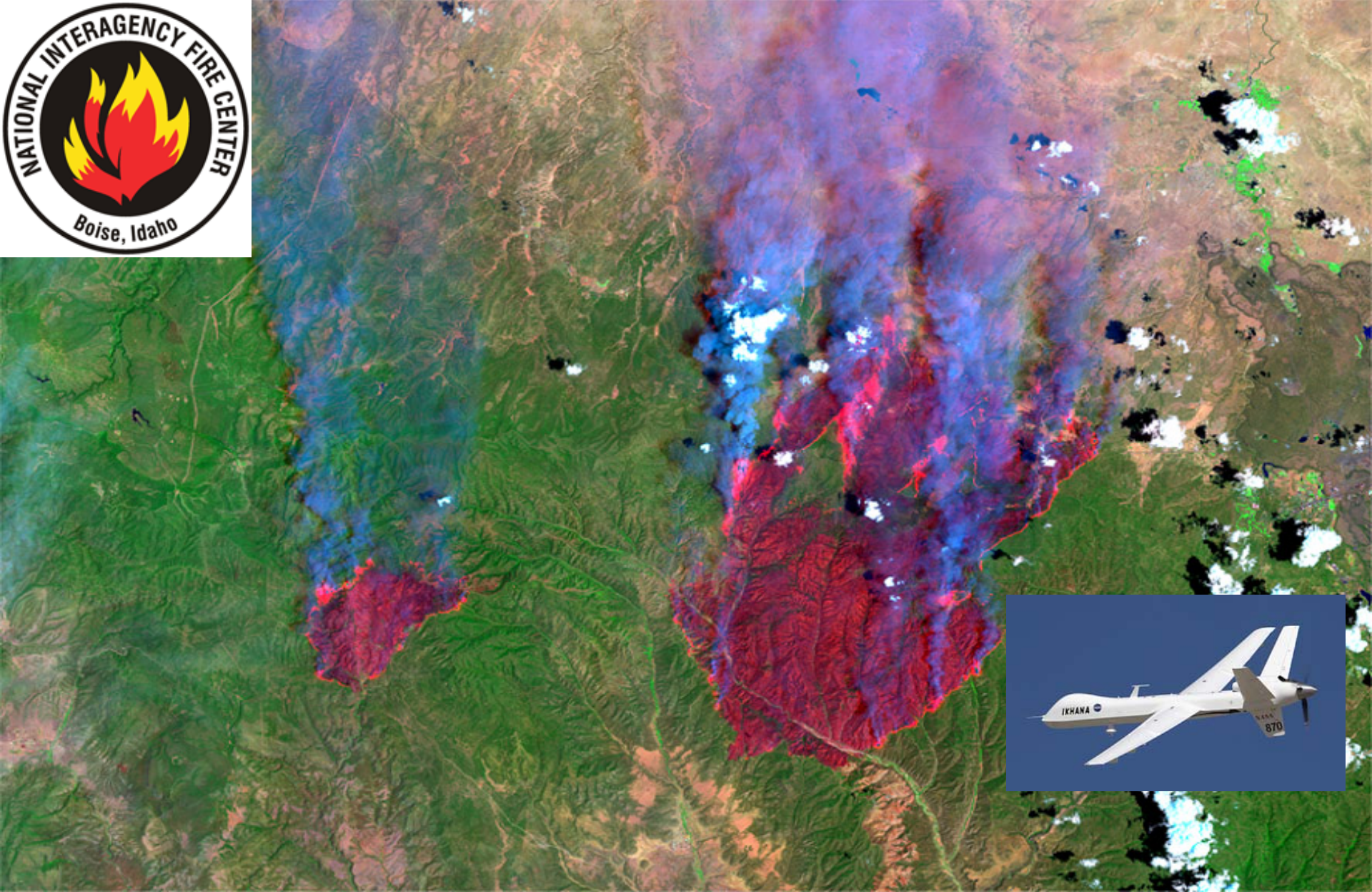
## Geographic Information







# New Era In Firefighting Capabilities











R e c l a m a t i o n











Graphical depiction of  
earthquake data here



**Wildlife Habitats Are Also Disappearing Rapidly**  
*Particularly the Habitat Corridors that Support Migration*

**Sagebrush**  
Historic



Current

**Wildlife Habitats Are Also Disappearing Rapidly**  
*Particularly the Habitat Corridors that Support Migration*

**Sagebrush**  
Historic



Current



# JACKSON HOLE, WYOMING

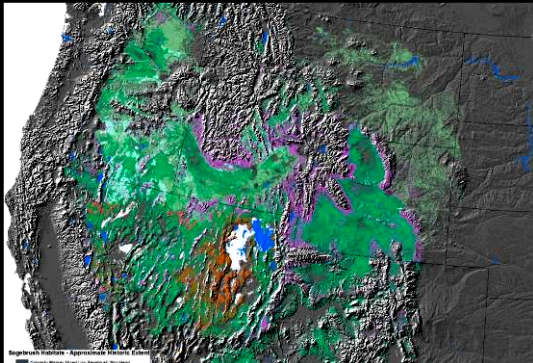
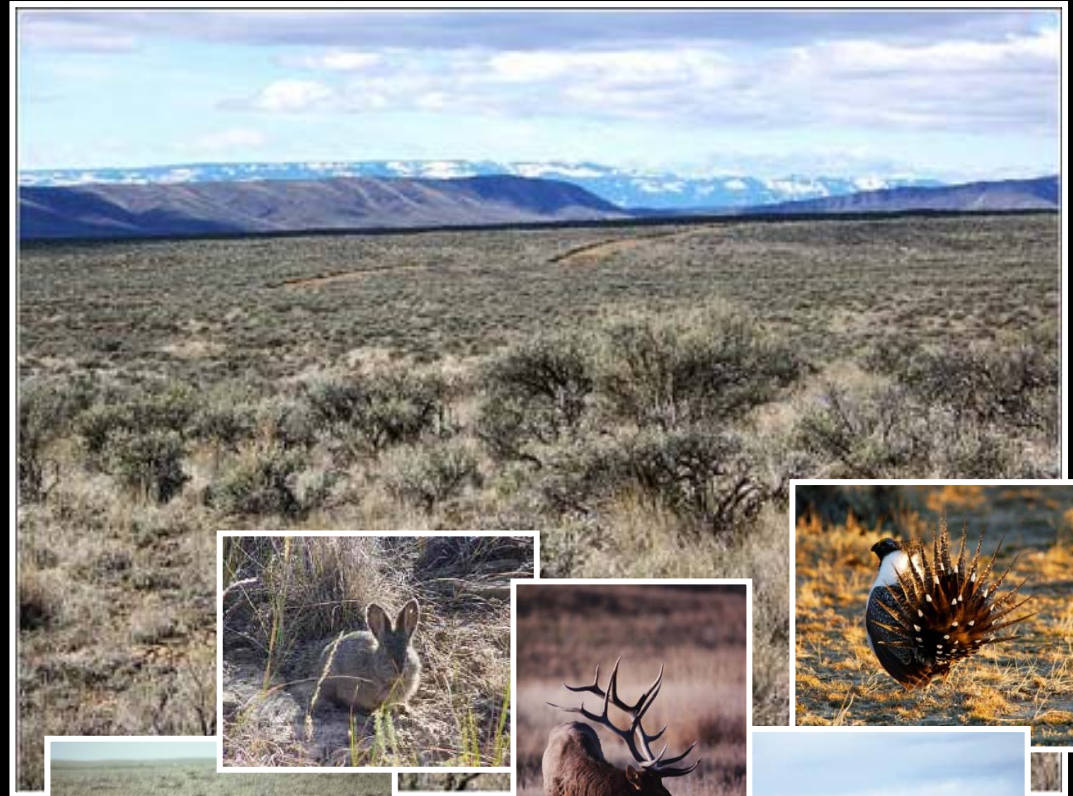
Western Governors' Association  
Annual Meeting | Teton Village | June 29 - July 1, 2008





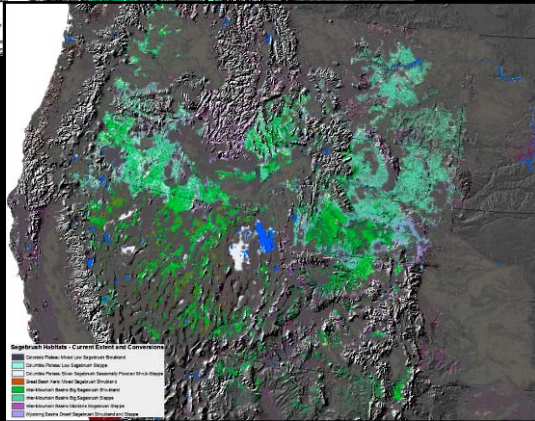
# Healthy Lands Initiative

## Sagebrush Historic



Sagebrush Habitats - Approximate Historic Extent

- Colorado Plateau - Low Sagebrush Steppe
- Great Basin - High Sagebrush Steppe
- Great Basin - Low Sagebrush Steppe
- Great Basin - Very Low Sagebrush Steppe
- Great Basin - Very High Sagebrush Steppe
- Great Basin - Very Low Sagebrush Steppe
- Great Basin - Very High Sagebrush Steppe
- Great Basin - Very Low Sagebrush Steppe



Sagebrush Habitats - Current Extent and Conversion

- Colorado Plateau - Low Sagebrush Steppe
- Great Basin - High Sagebrush Steppe
- Great Basin - Low Sagebrush Steppe
- Great Basin - Very Low Sagebrush Steppe
- Great Basin - Very High Sagebrush Steppe
- Great Basin - Very Low Sagebrush Steppe
- Great Basin - Very High Sagebrush Steppe
- Great Basin - Very Low Sagebrush Steppe
- Great Basin - Very High Sagebrush Steppe

## Current

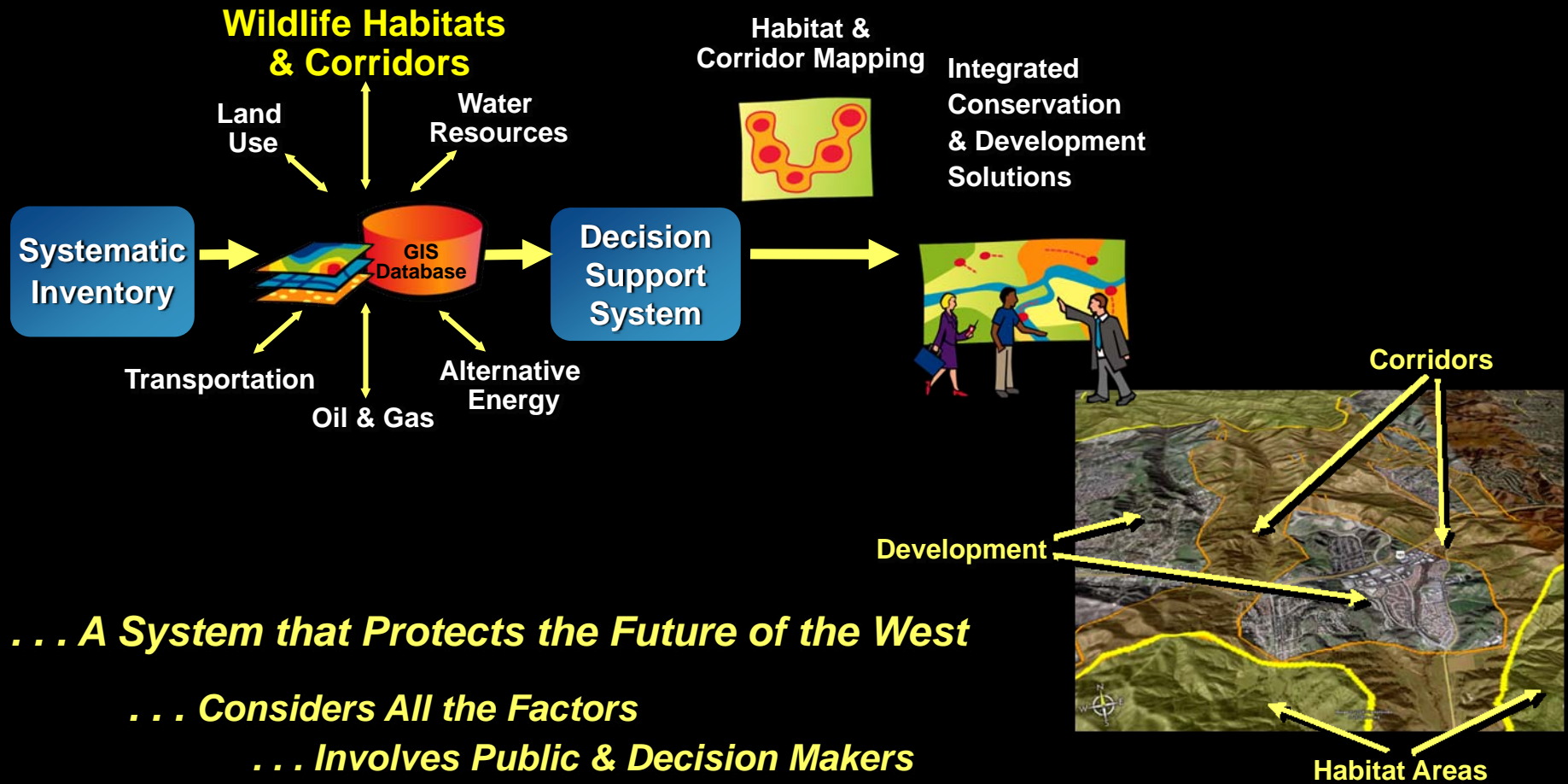




# We Need A System for Collaborating Together

*... A Decision Support System in Each State*

## Here's How To Do It



*... A System that Protects the Future of the West*

*... Considers All the Factors*

*... Involves Public & Decision Makers*

*... Illuminates New Solutions*





Sensible, Responsible Energy Production



# Reducing Organizational Stovepipes

Insert multiple Federal  
Program logos and graphics  
here



# Reducing Organizational Boundaries



**SAOGI**  
Geospatial Leadership and Oversight

**DAS Steering Group**

Coordinates on budget and elevation of issues

- Guiding Procedures and Processes**
- Establish business requirements, including consolidating budget and approving investments
  - Determine Enterprise Requirements Management
  - Recognize and document Authoritative Data Sources and Authoritative Services (ADS)
  - Document data management life cycle

Strategic Direction & Policy

**Geospatial Policy Coordination**  
Hub of the Geospatial Enhanced Governance

**Geospatial Policy and Coordination Office**

- Enterprise coordination and facilitation

Operations

**GeoTeam and EG**

Provides oversight

Provides oversight

**Geospatial Management Office**

- Programmatic support and portfolio management

**Enterprise Geographic Information Management Team**

- Bureau implementation and optimization

Geospatial implementation within DOI Bureaus not already instituted in a formal geospatial program

Departmental/ Bureaus

- Geospatial One-Stop
- National Map
- EROS
- NILS
- GEOS
- NAIP
- MRLC
- NativeView

Many more...

Enterprise Geospatial Governance

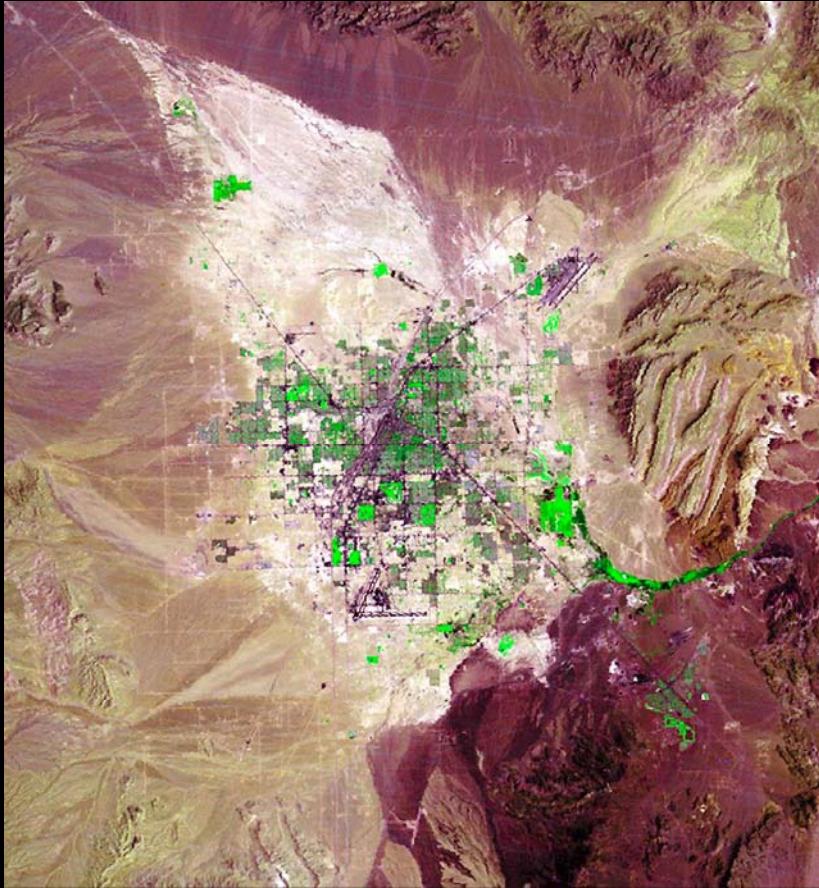


# Center for Earth Resources Observation and Science (EROS)

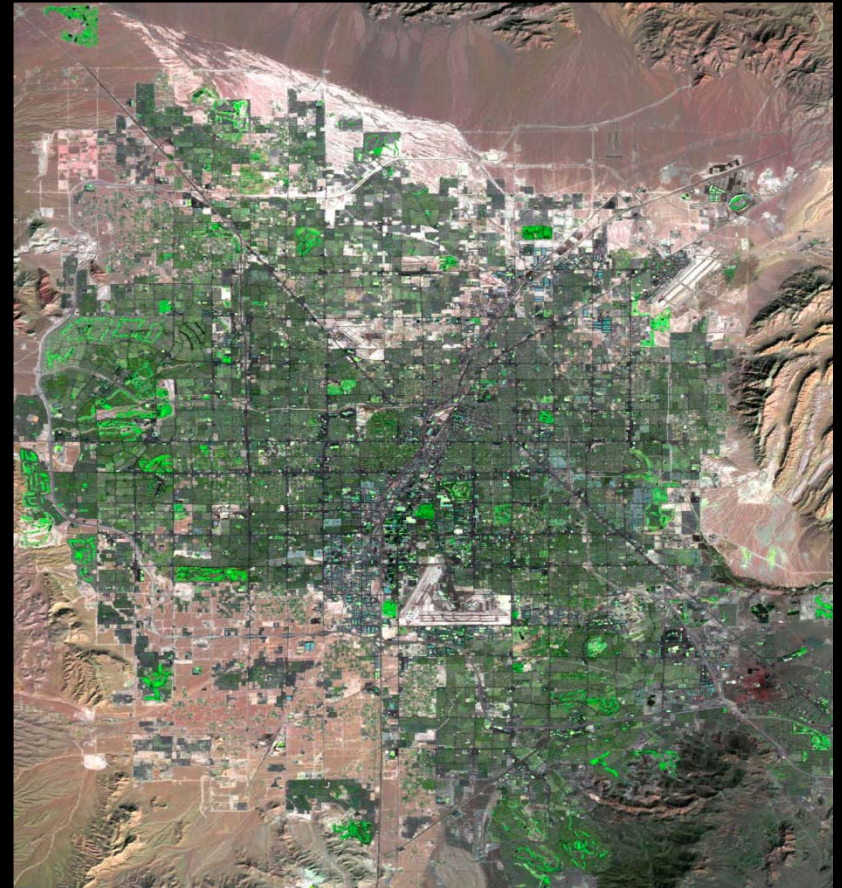


35 years of LANDSAT and 70 years of imagery

# Population Growth in Las Vegas, NV



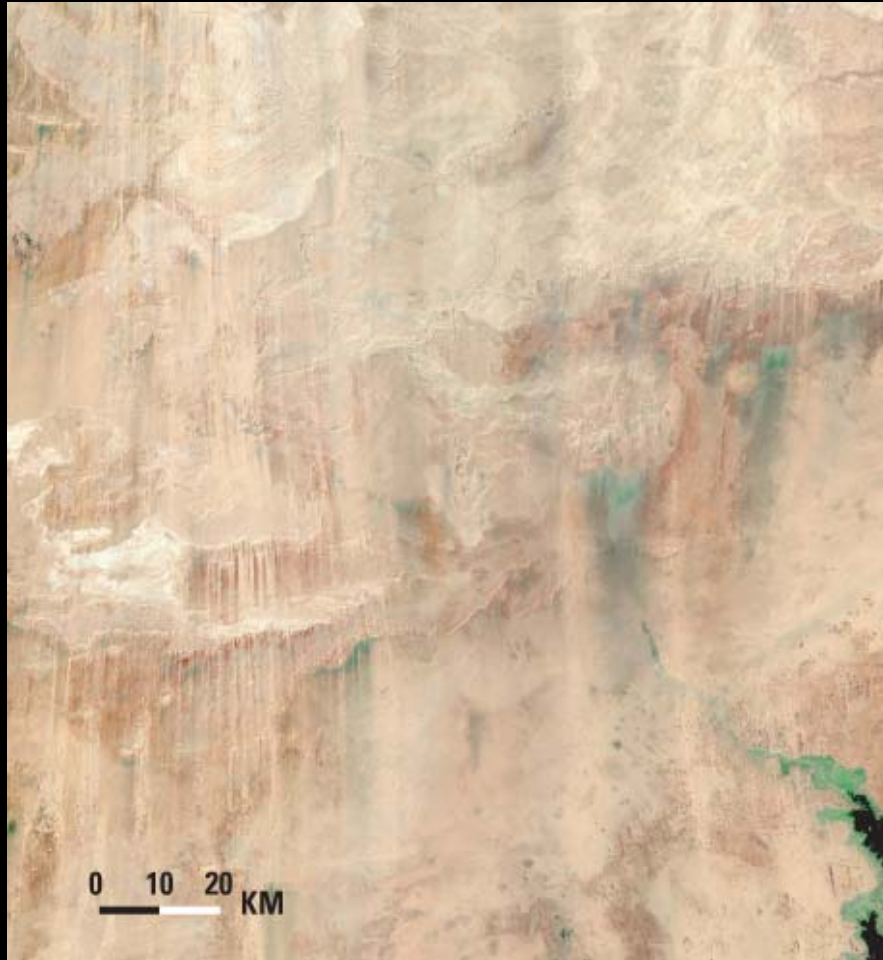
1973



2000



# Irrigation Expansion in Egypt



1984



2000

# Imagery for the Nation



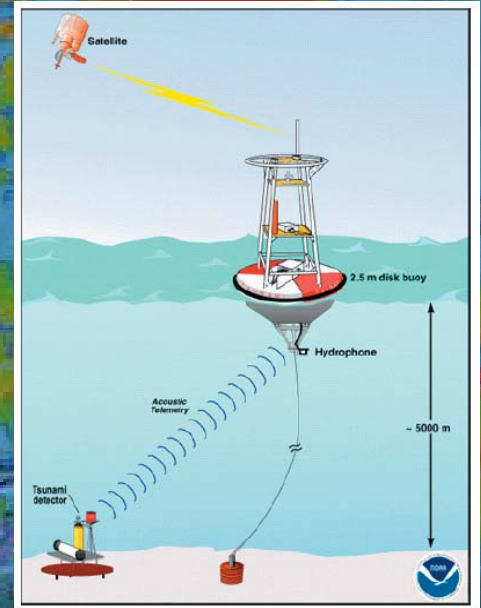
National Geospatial Advisory Committee

C o l l a b o r a t i o n



# R e s o u r c e S h a r i n g





D e t e c t i o n   a n d   P r e v e n t i o n



# Conservation and Restoration



Insert satellite imagery of what  
has happened to the arctic  
sea





Indian Affairs  
Bureau of Indian Education





