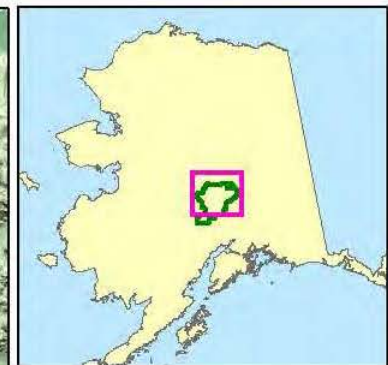
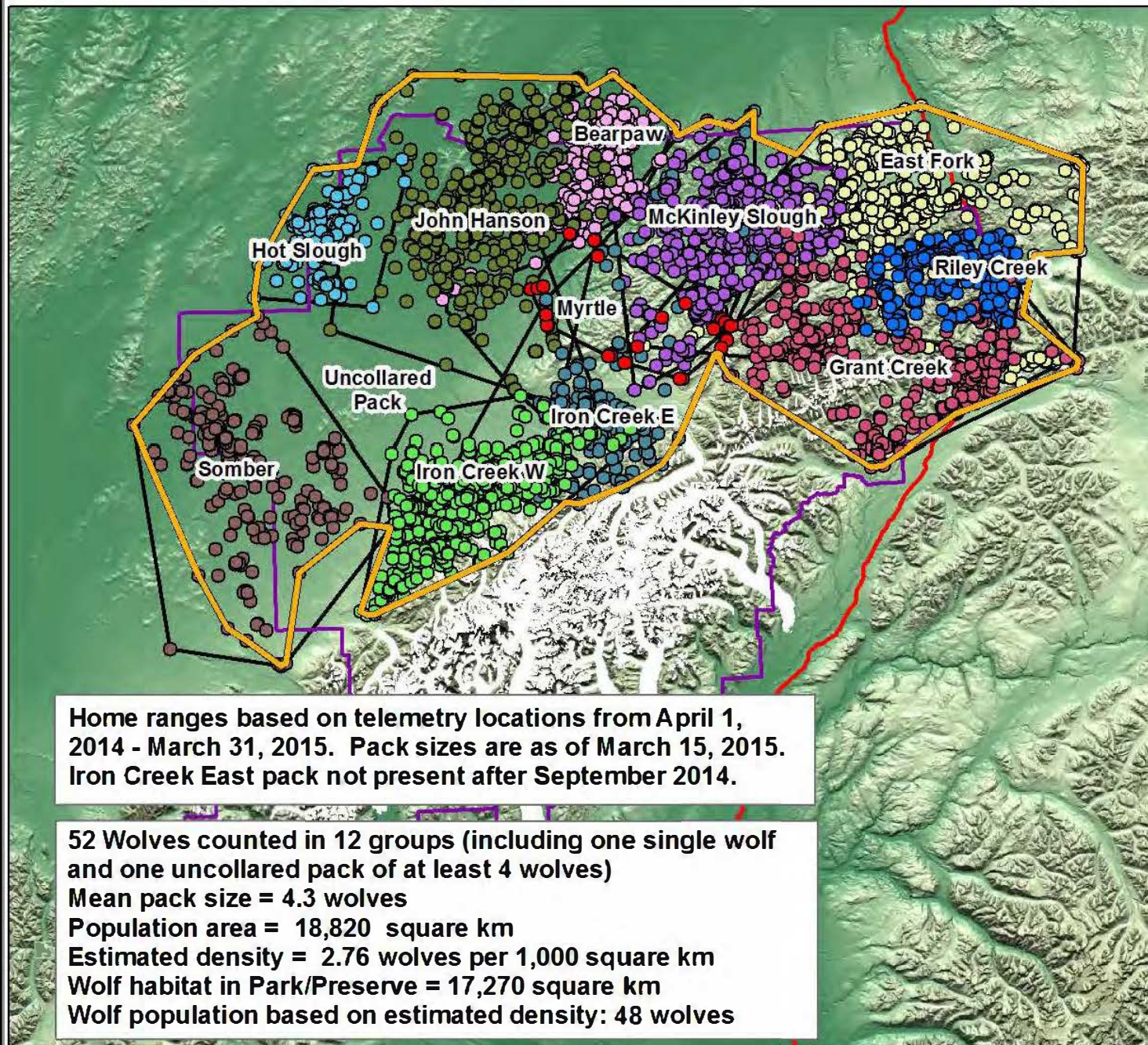


Spring 2015 Wolf Population Estimate

National Park Service
U. S. Department of the Interior

Denali National Park and Preserve



Legend

Wolf Locations (Pack size)

- Bearpaw (2)
- East Fork (14)
- Grant Creek (4)
- Hot Slough (2)
- Iron Creek East (0)
- Iron Creek West (7)
- John Hansen (5)
- McKinley Slough (2)
- Myrtle (2)
- Riley Creek (5)
- Somber (4)

Pack Territories

Population Area

Park Boundary

George Parks Highway

Home ranges based on telemetry locations from April 1, 2014 - March 31, 2015. Pack sizes are as of March 15, 2015. Iron Creek East pack not present after September 2014.

52 Wolves counted in 12 groups (including one single wolf and one uncollared pack of at least 4 wolves)
 Mean pack size = 4.3 wolves
 Population area = 18,820 square km
 Estimated density = 2.76 wolves per 1,000 square km
 Wolf habitat in Park/Preserve = 17,270 square km
 Wolf population based on estimated density: 48 wolves

