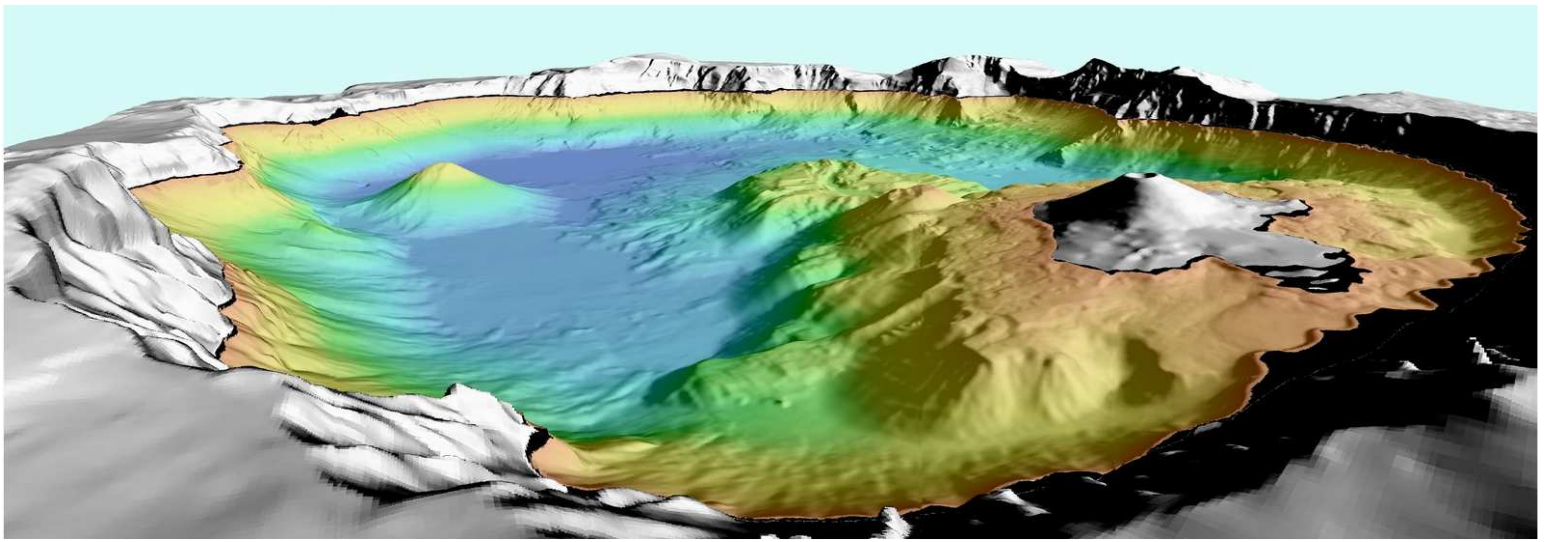




The World's Deepest Lakes

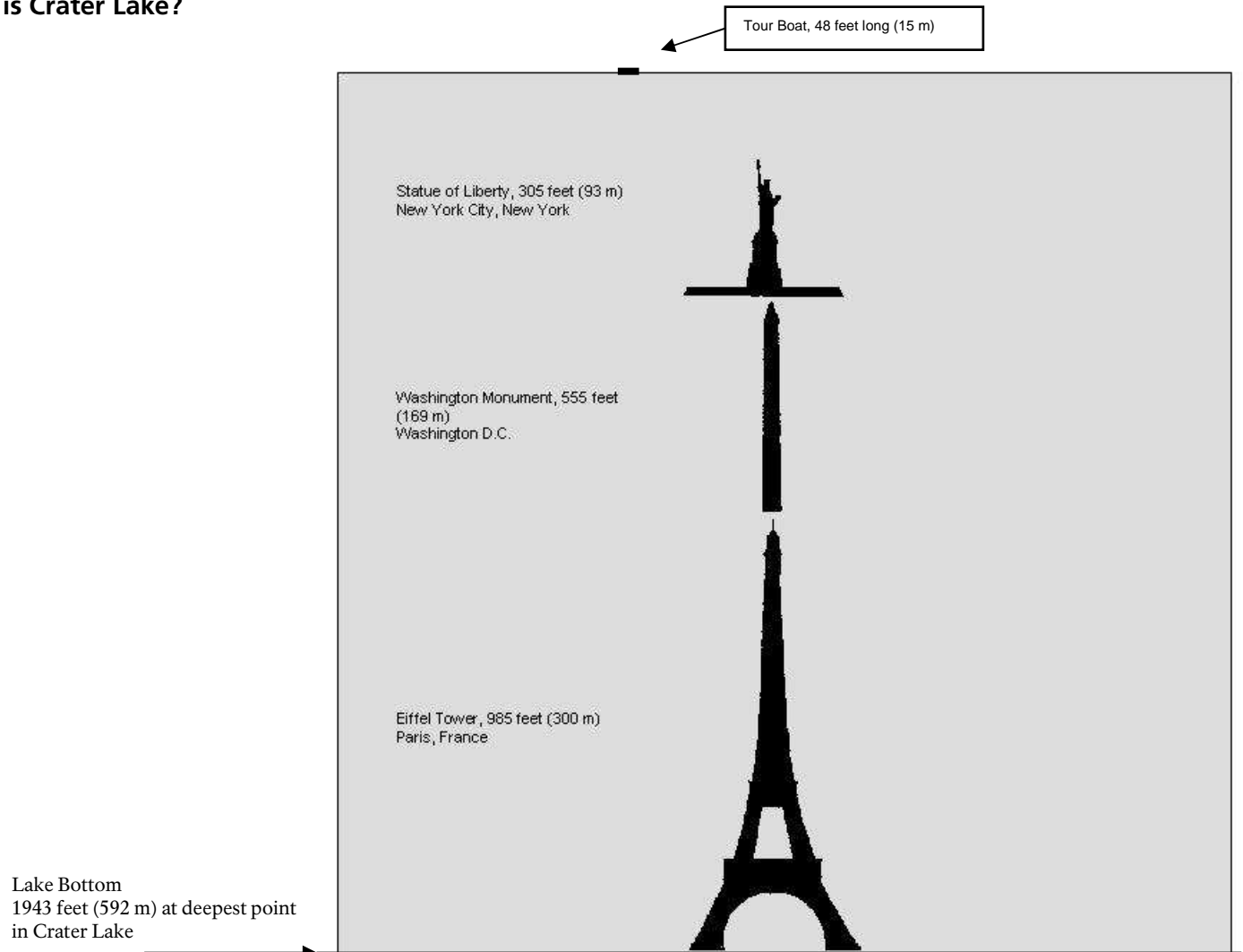


At 1,943 feet (592 meters), Crater Lake is the deepest lake in the United States and one of the deepest in the world. The depths were first explored thoroughly in 1886 by a party from the U.S. Geological Survey. Their primitive sounding device consisted of a lead pipe attached to piano wire. After lowering it into the water at 168 locations around the lake, they concluded the deepest part to be 1,996 feet (608 meters). This was only 53 feet (16 meters), or less than 3%, off the official depth measurement recorded with multibeam sidescan sonar in 2000.

	<u>Name</u>	<u>Location</u>	<u>Depth</u>
1.	Baikal	Siberia, Russia	5,369 ft (1,637 m)
2.	Tanganyika	Africa (Tanzania, Burundi, Congo & Zambia)	4,826 ft (1,471 m)
3.	Caspian Sea	Asia (Iran, Russia, Azerbaija, Kazakhstan, & Turkmenistan)	3,362 ft (1,025 m)
4.	Vostok	Antarctica	at least 2,950 ft (900 m)
5.	O'Higgins- San Martin	South America (Chile & Argentina)	2,742 ft (836 m)
6.	Nyasa (Malawi)	Africa (Mozambique, Tanzania & Malawi)	2,316 ft (706 m)
7.	Issyk-Kul	Asia (Kyrgyzstan)	2,192 ft (668 m)
8.	Great Slave Lake Canada		2,015 ft (614 m)
9.	Crater Lake	U.S.A.	1,943 ft (592 m)
10.	Matano	Indonesia	1,936 ft (590 m)
11.	General Carrera	Argentina, Chile	1,923 ft (586 m)
12.	Hornindalsvatnet	Norway	1,686 ft (514 m)
16.	Tahoe	U.S.A.	1,644 ft ((501 m)

Sources: International Lake Environment Committee Foundation (www.ilec.or.jp) and Geology.com

How Deep is Crater Lake?



At least 1,943 feet (592 meters), Crater Lake is the deepest lake in the United States and one of the deepest in the world. Imagine stacking the Eiffel Tower, Washington Monument, and Statue of Liberty in the deepest point. There would still be 100 feet (30 meters) of water covering Liberty's torch.

Crater Lake was first explored thoroughly in 1886 by a party from the U.S. Geological Survey who set out to determine the depth of the lake. Their primitive sounding device consisted of a lead pipe attached to piano wire. After lowering it into the water at 168 locations around the lake, they concluded the deepest part of the lake to be 1,996 feet (608 meters). This was only 53 feet (16 meters), or less than 3% off from the official depth measurement recorded with multibeam sidescan sonar in 2000.