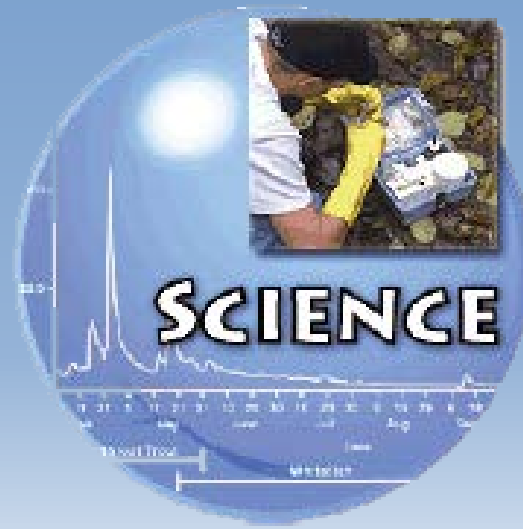


Sediment Deposition At Sea



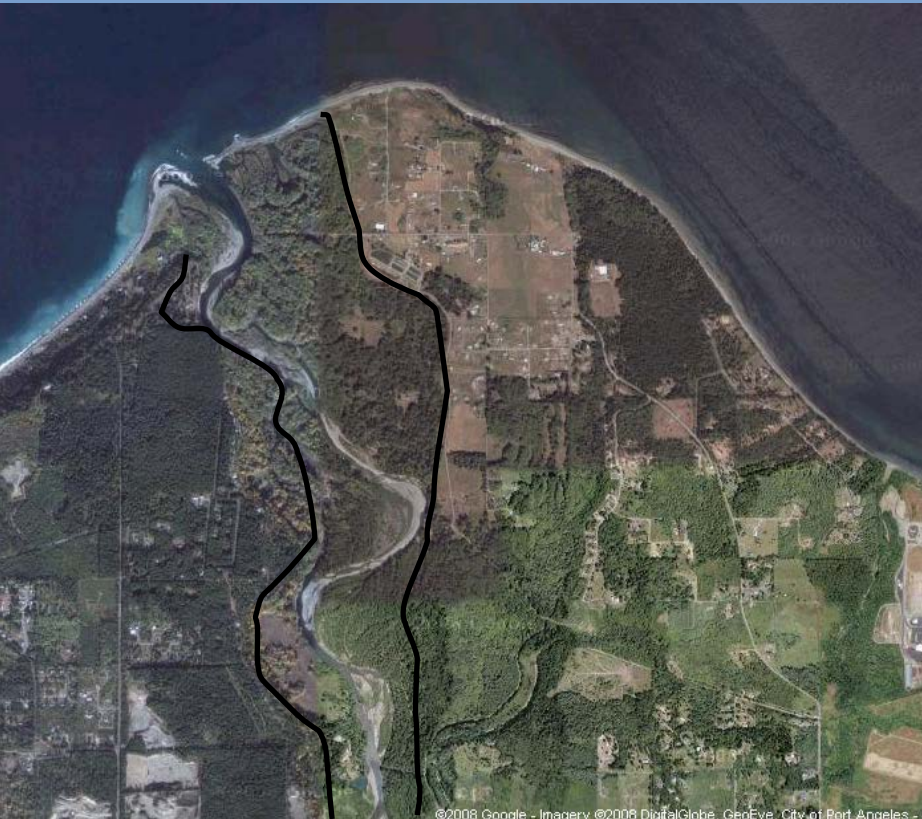
Deltas

- Once sediment meets stagnant water on a lake or the ocean, it is deposited in the delta.



Historic Delta Plains

- o A river that meanders over a large area over thousands of years can form large delta plains.



River-Dominated Delta





FREEING THE ELWHA

Longshore Drift

The waves arrive on the Dungeness Spit at an angle, which is indicative of the direction of the longshore drift. This wave action picks up sediment and transports it down current.



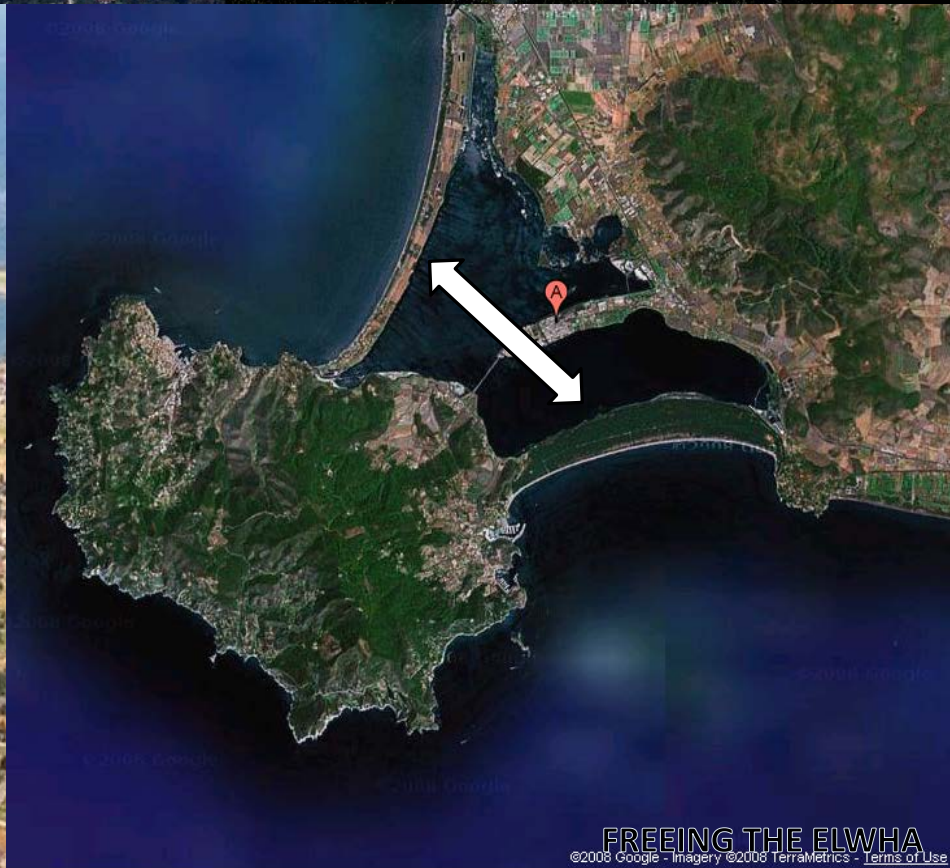
Sand Bars and Estuaries



Mudflat Estuaries



Spits and Tombolos



Barrier Islands





Breakwaters and Sea Walls

- Structures used absorb and control the erosive action of waves





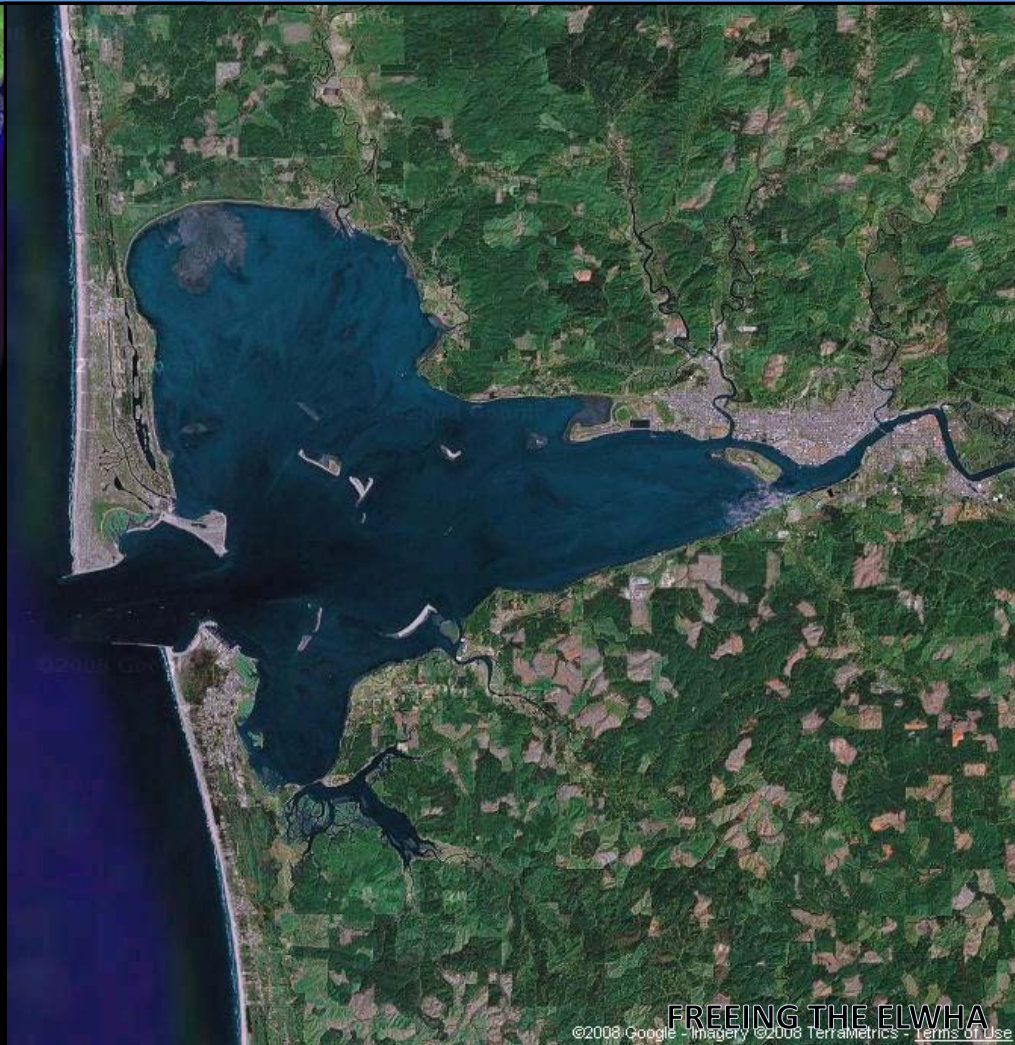
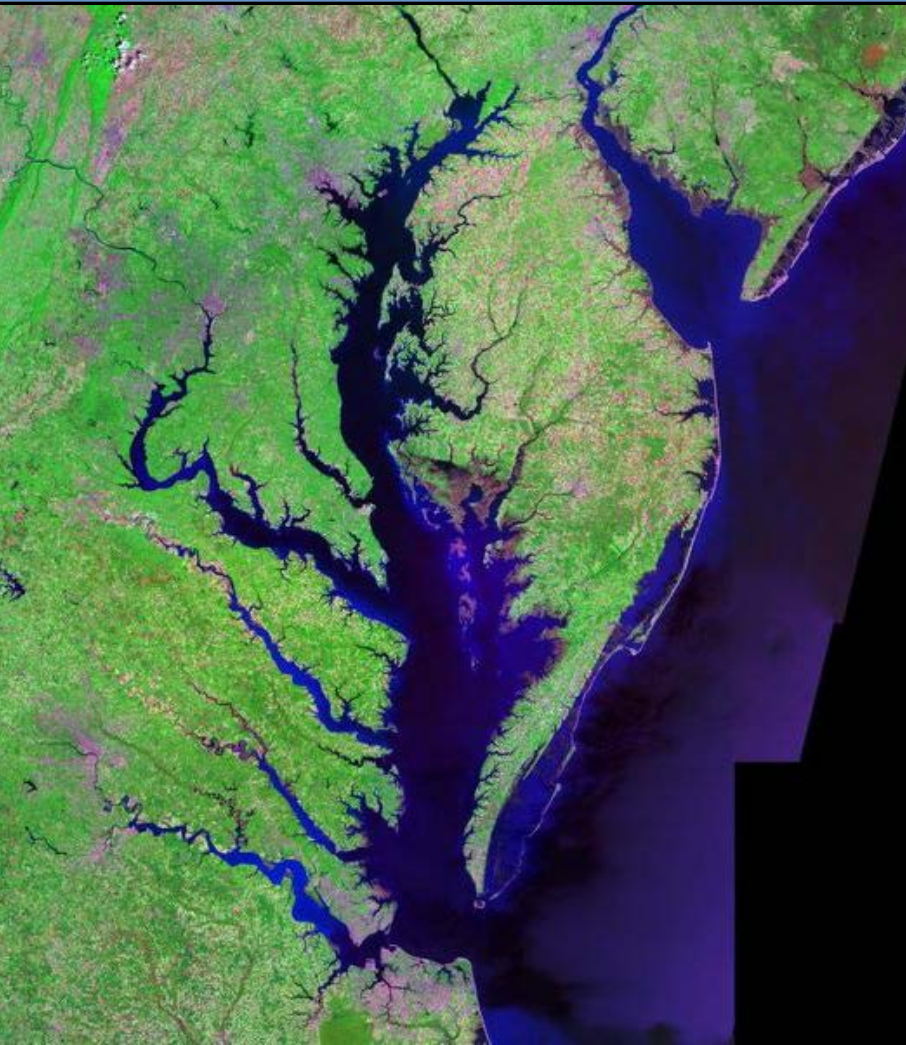






Ria

(Flooded River Valleys)



This project was made possible in part by a grant from
Washington's National Park Fund.

