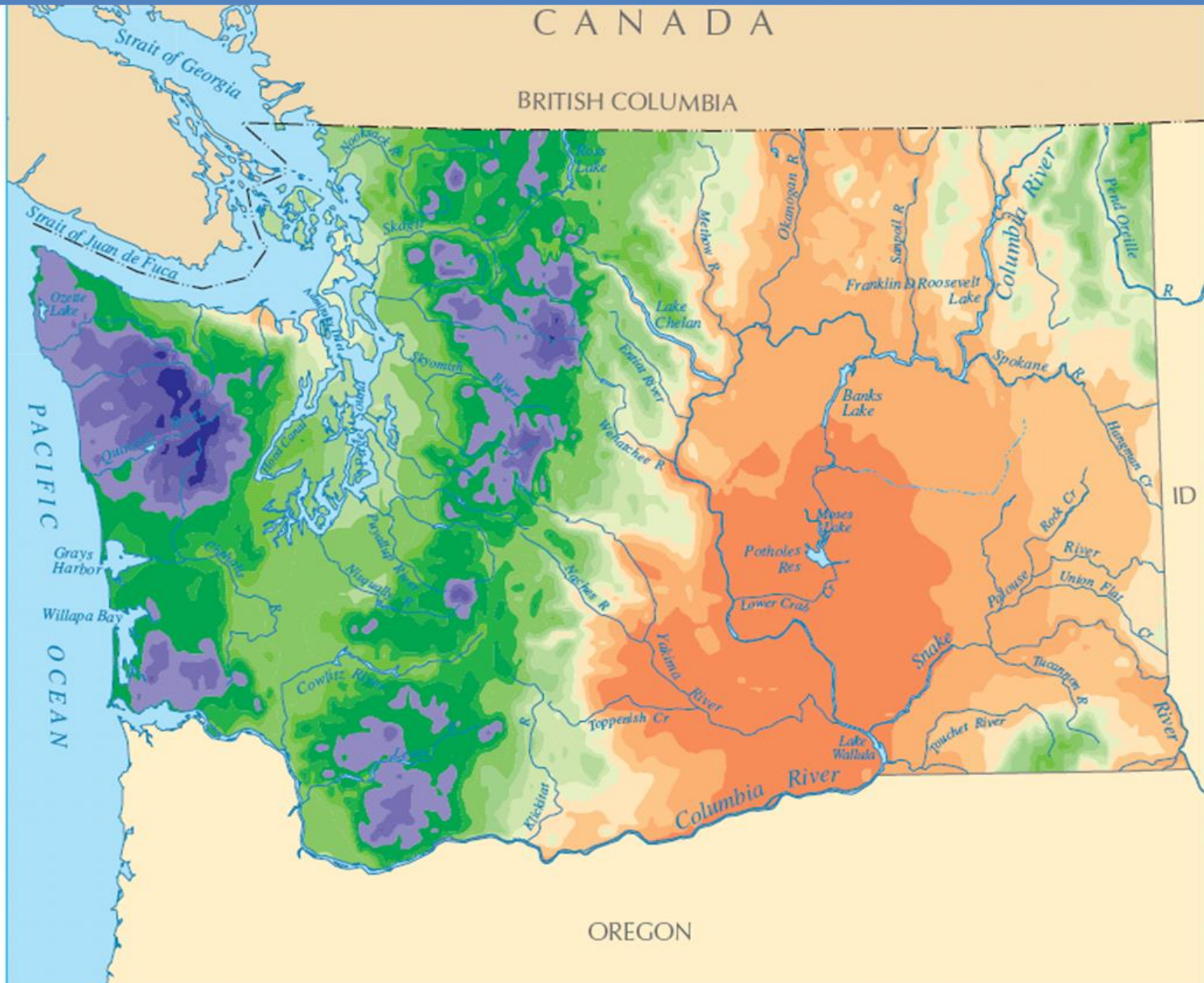
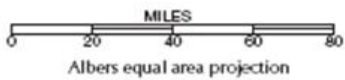
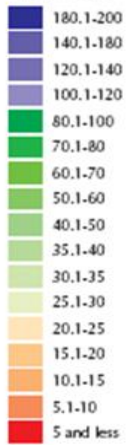


PRECIPITATION

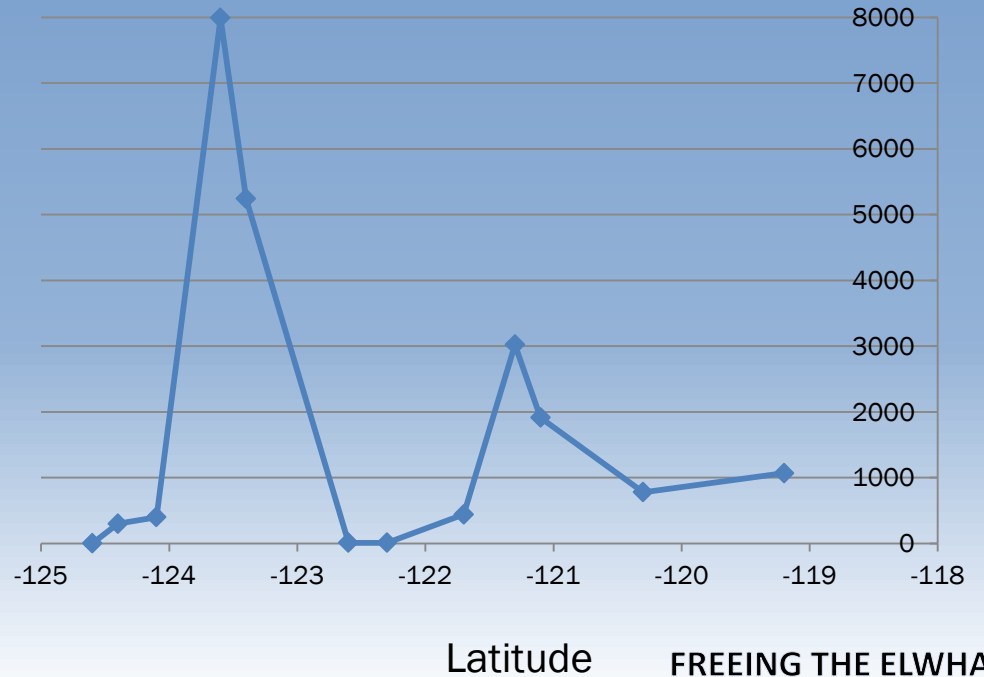
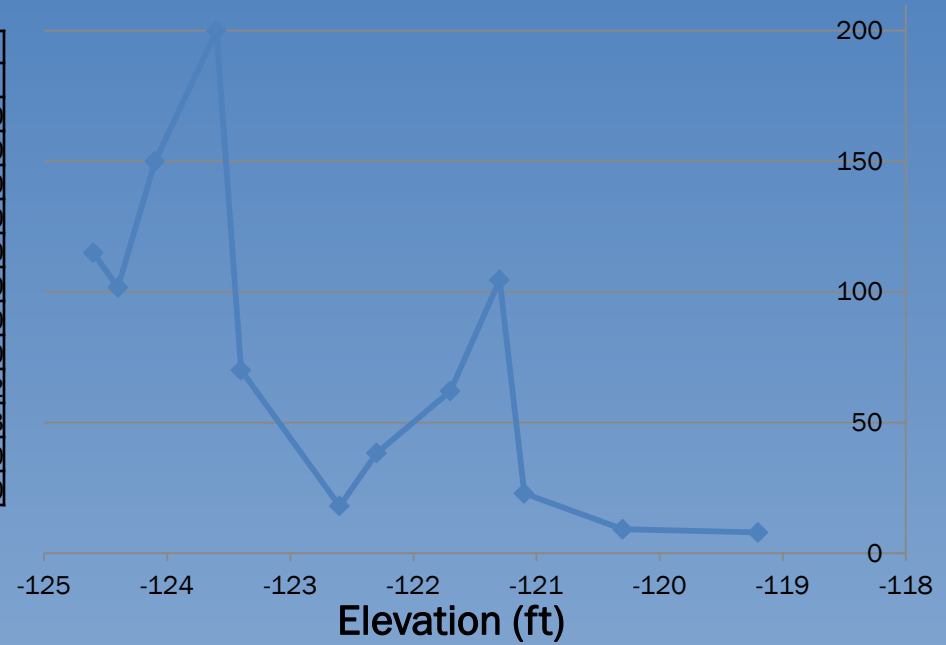
Precipitation varies widely across the United States, from a low of 2.3 inches per year in California's Death Valley to a high of 460 inches on Hawaii's Mount Waialeale. Nevada ranks as the driest state, with an average annual precipitation of 9.5 inches, and Hawaii is the wettest, at 70.3 inches. The average annual precipitation for Washington is 38.15 inches.

Average Annual Precipitation (in inches)
1961-1990



Transect			
Name	Longitude	Rainfall (inches)	Elevation (ft)
La Push	-124.6	115	0
Forks	-124.4	101.74	300
Hoh Ranger Station	-124.1	150	400
Mount Olympus	-123.6	200	7990
Hurricane Ridge	-123.4	70	5240
Port Townsend	-122.6	18	10
Seattle	-122.3	38.25	10
North Bend	-121.7	62.06	440
Snoqualmie Pass	-121.3	104.57	3022
Cle Elum	-121.1	22.84	1913
Wenatchee	-120.3	9.12	780
Moses Lake	-119.2	7.88	1070

Rainfall (inches)



This project was made possible in part by a grant from
Washington's National Park Fund.

