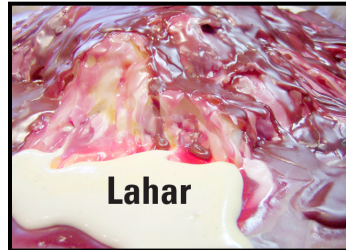
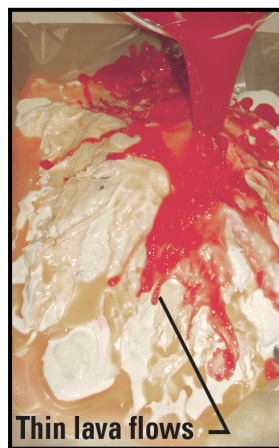
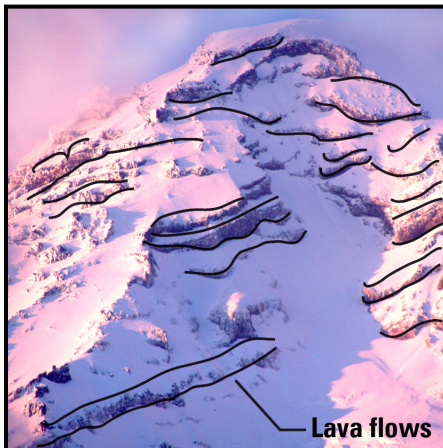


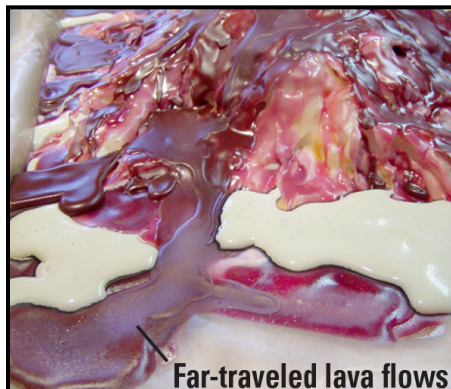
Lava Flows - Experimental and Real World Comparisons



Lahar deposits—Snow and ice meltwater from pyroclastic flows formed this lahar deposit, which is represented by the flow of melted ice cream in the experiment.



Thin lava flows on the cone—Thin lava flows eroded by glaciers are represented by thin wax lava flows that hardened on the volcano model.



Lava flow ridges—A thick stack of lava flows built the ridges on both sides of Nisqually Glacier. Similar far-traveled wax lava flows poured down the volcano model to the tray bottom.