

# Equal Exchange

Choose two goods from the top row to trade for two or more goods from the bottom row. Your total trade amount must be even. (See example.)

## TRADE GOODS



Sugar \$1



Kettle \$8



Wool socks \$5



Mule \$8



Buffalo robe \$3



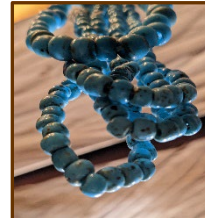
Tin cup \$2



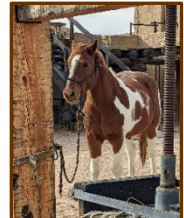
Chocolate \$1.50



Wool blanket \$9



Trade beads \$2.50



Horse \$20

## EXAMPLE

Item to trade	Quantity	Value	Traded for	Quantity	Value
kettle	1	\$8.00	blanket	1	\$9.00
bison robes	2	\$6.00	chocolate	2	\$3.00
			tin cup	1	\$2.00
		Total \$14.00			Total \$14.00

## YOUR TURN

Item to trade	Quantity	Value	Traded for	Quantity	Value
		Total \$			Total \$

**Point to Ponder:** Would you rather trade items than buy them with cash, coin, credit card, or mobile payment? Why or why not?