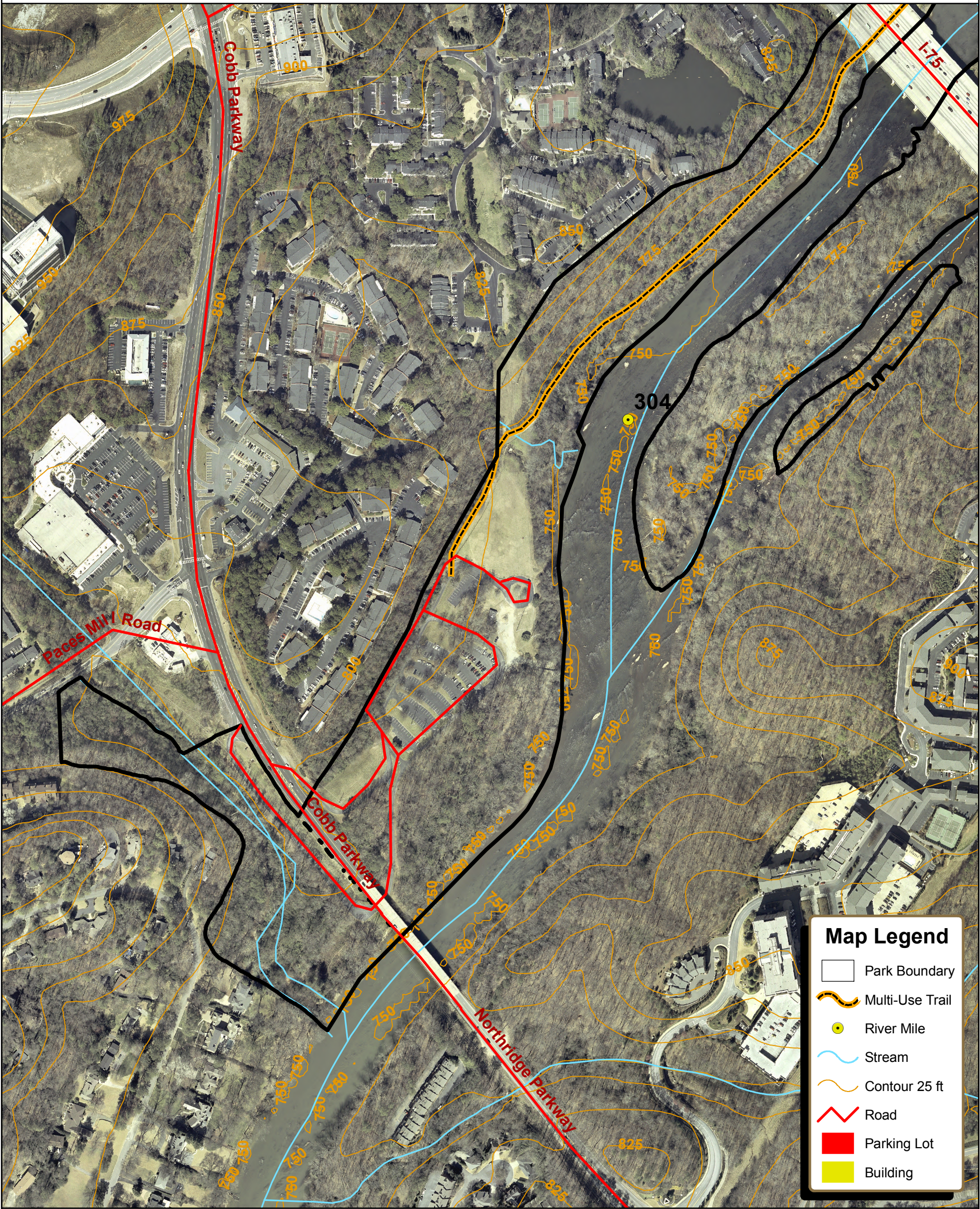




# Paces Mill



## Map Legend

- Park Boundary
- Multi-Use Trail
- River Mile
- Stream
- Contour 25 ft
- Road
- Parking Lot
- Building

0 350 700 1,400 Feet



Chattahoochee River  
National Recreation Area  
1978 Island Ford Parkway  
Atlanta, GA 30350  
678-538-1200

Produced by Chattahoochee River  
National Recreation Area  
SRM Division GIS Lab

The National Park Service gives no warranty as to the accuracy, reliability, or completeness of this map for individual use or aggregate use with other data for general or scientific purposes, nor shall the act of distribution constitute as such.

For additional information, please contact:  
Chattahoochee River National Recreation Area.