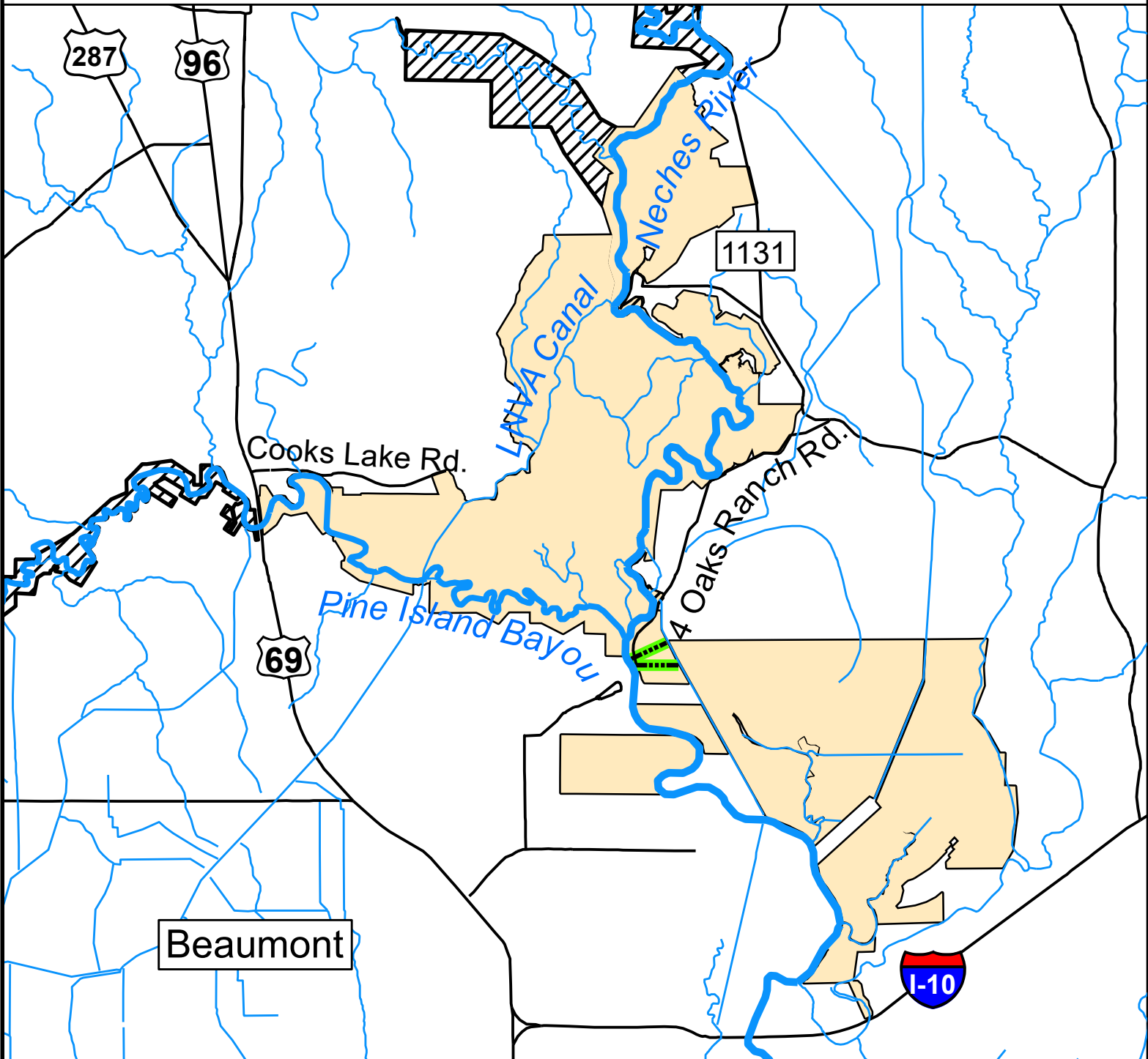




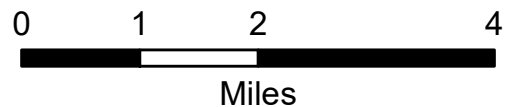
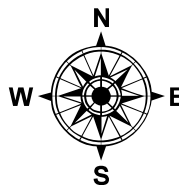
Beaumont Unit - Hog Trapping Area Map



Legend

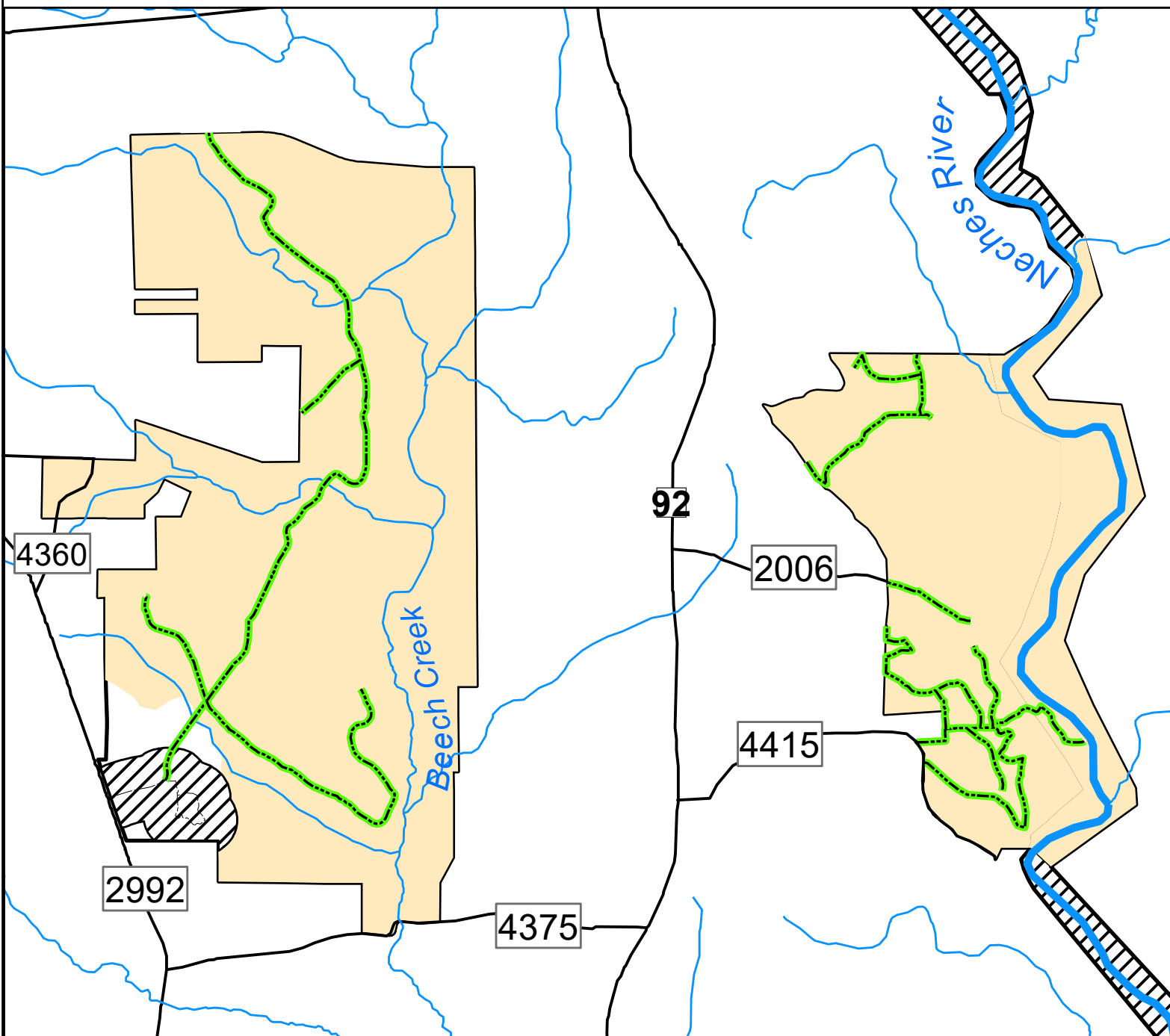
- Roads
- Designated ROWs & Fire breaks
- ▨ No Hog Trapping
- Hog Trapping Area

Traps must be 500 feet from hiking trails, day use areas, houses, boat ramps, buildings, and cemeteries.





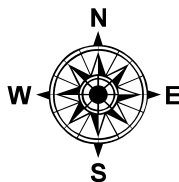
Beech Creek & Canyonlands Units - Hog Trapping Area Map



Legend

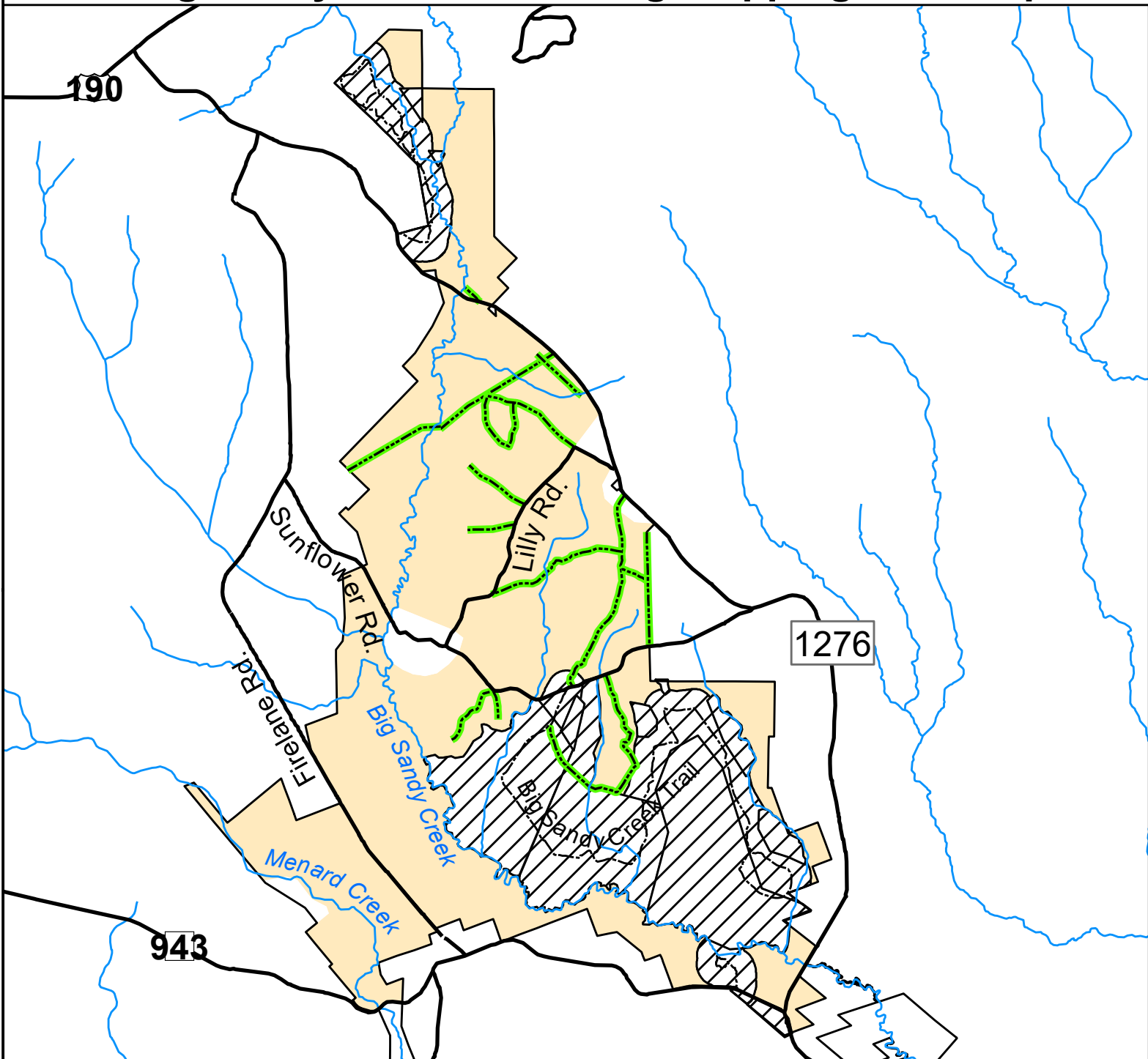
- No Hog Trapping
- Hog Trapping Area
- Designated ROWs & Fire breaks
- Roads
- Hiking Trails

Traps must be 500 feet from hiking trails, day-use areas, houses, boat ramps, buildings, and cemeteries.





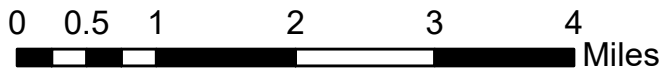
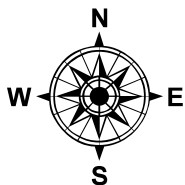
Big Sandy Creek Unit - Hog Trapping Area Map



Legend

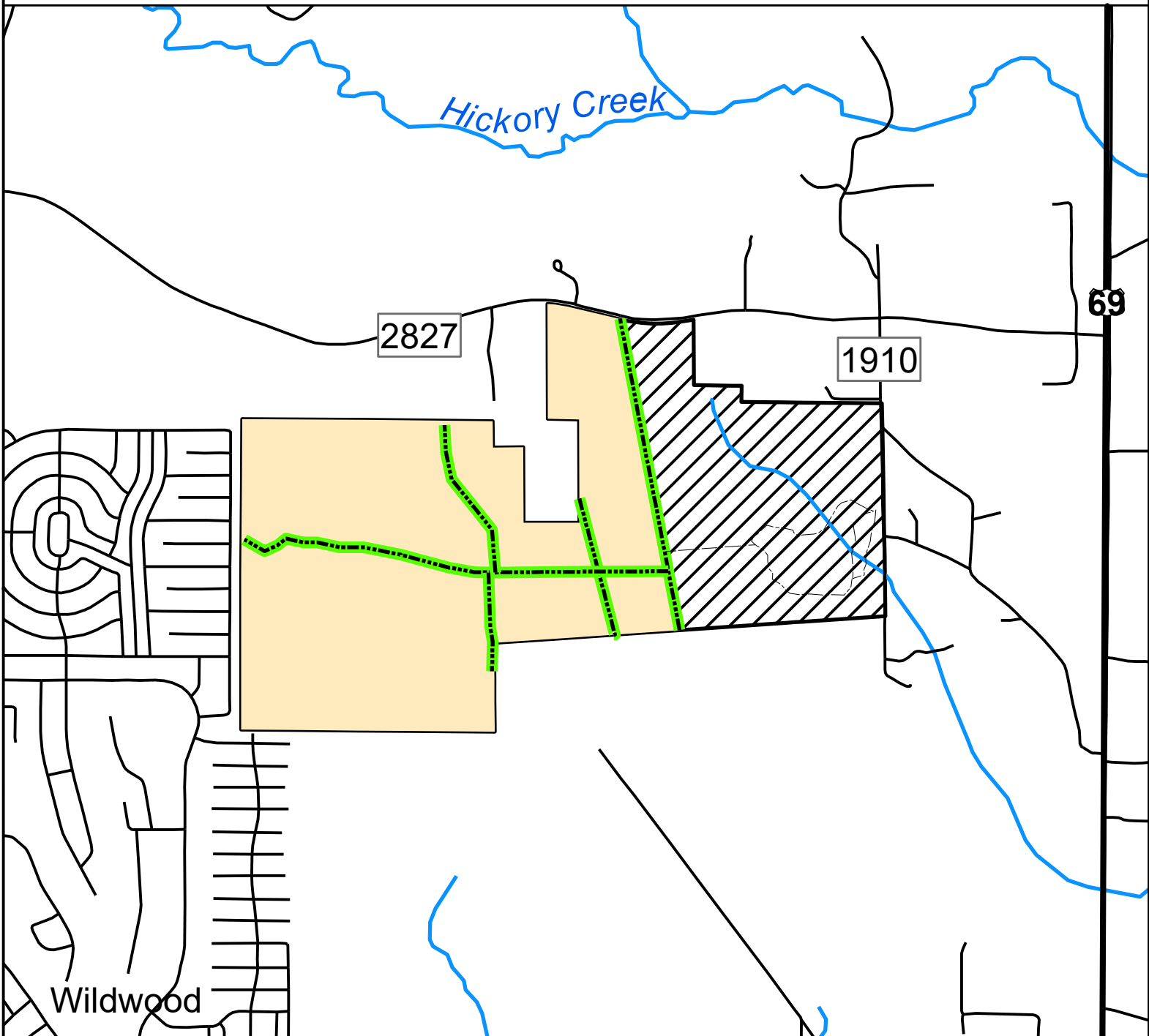
- Roads
- - - Hiking Trails
- Designated ROWs & Fire breaks
- ▨ No Trapping
- Hog Trapping Area

Traps must be 500 feet from hiking trails, day use areas, houses, boat ramps, buildings, and cemeteries.





Hickory Creek Savannah Unit - Hog Trapping Area Map



Traps must be 500 feet from hiking trails, day-use areas, houses, boat ramps, buildings, and cemeteries.

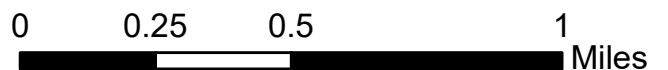
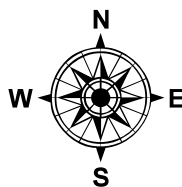
Legend

----- Hiking Trails

----- Designated ROWs & Fire breaks

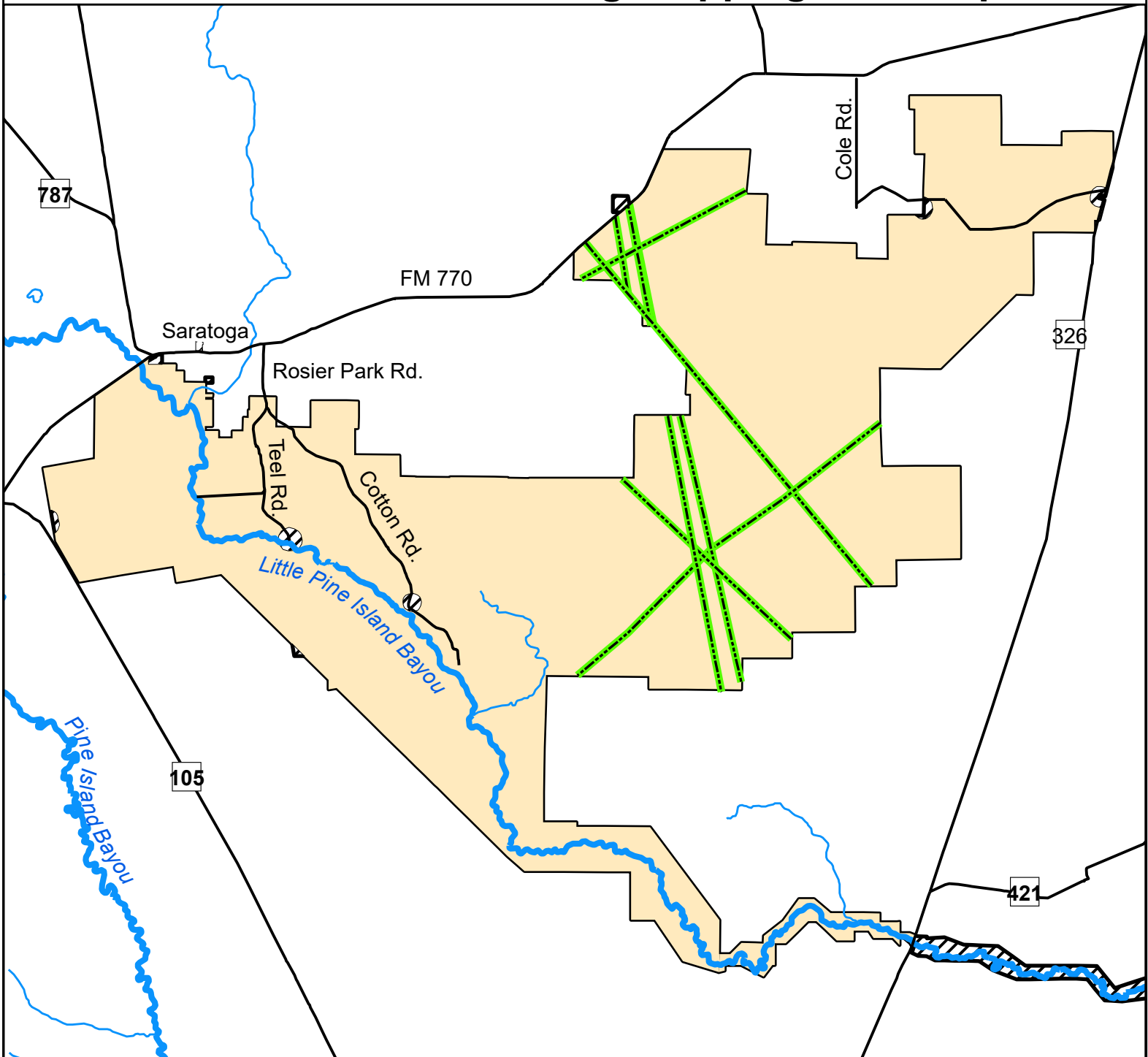
▨ No Hog Trapping

■ Hog Trapping Area





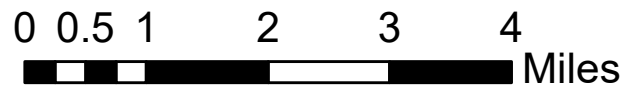
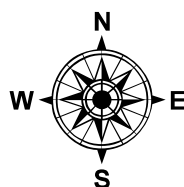
Lance Rosier Unit - Hog Trapping Area Map



Legend

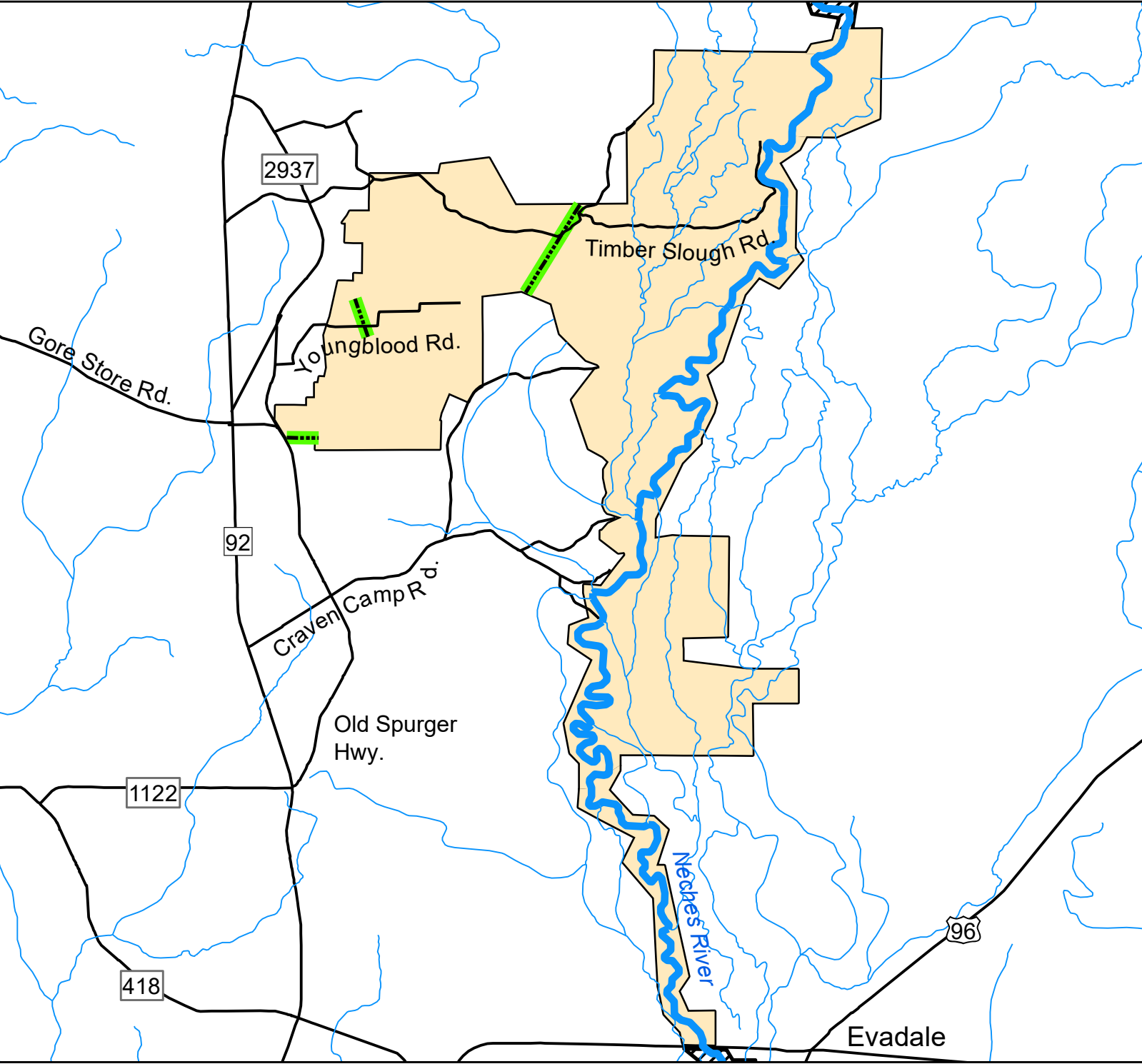
- Roads
- Designated ROWs & Fire breaks
- ▨ No Hog Trapping
- Hog Trapping Area

Traps must be 500 feet from hiking trails, day-use areas, houses, boat ramps, buildings, and cemeteries.





Jack Gore Baygall & Neches Bottom Units - Hog Trapping Area Map



Legend

- No Hog Trapping
- Hog Trapping Area
- Designated ROWs & Firebreaks
- Roads

Traps must be 500 feet from hiking trails, day-use areas, houses, boat ramps, buildings, and cemeteries.

