



National Park Service

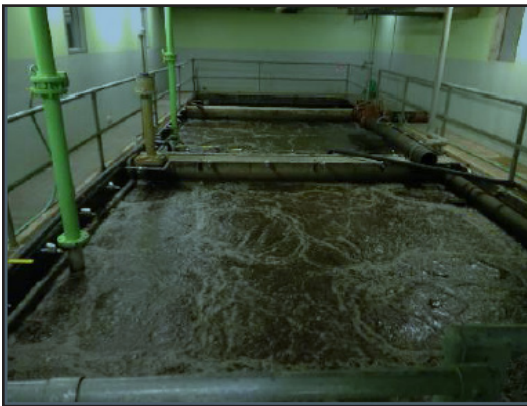
# Paradise Inn + Annex Restoration

## Restoring Paradise: What Next?

One of Mount Rainier National Park's goals is to protect and restore essential park resources through targeted investments.

A park initiative contributing to this goal is to Restore Paradise. Over the last 15 years, the National Park Service has made significant investments to restore Paradise including; rebuilding the road to Paradise, replacing the Henry M. Jackson Visitor Center, and completing a renovation of the entire Paradise Inn and historic Guide House, among many other steps.

Ongoing efforts to Restore Paradise will involve two more key initiatives, along with several other smaller projects. These two key initiatives are to:



Wastewater treatment system

- Rehabilitate the Paradise trail network and restore Paradise Meadows and
- Rehabilitate the entire wastewater treatment system

Providing for safe access for visitors while protecting the meadows of Paradise requires an interdisciplinary team approach. We must re-align and reconstruct trails to both meet the needs of visitors and maintain sensitive meadows. This will also require restoration of areas that have been degraded. An interdisciplinary team will evaluate current conditions, trail use, snow melt and drainage patterns, and assess work done over the last two decades to maintain

access and restore meadows. To define specific new projects, they will evaluate the data to determine what has been working well and what has not been as effective. The goal is to provide a sustainable trail system that accommodates the many uses of the trails and to protect and restore the meadows, while preserving the historic characteristics of Paradise.

Based on this analysis, the park will develop an implementation plan towards accomplishing the twin objectives of restoring the meadows and providing adequate trails for people to continue to walk and hike in the area. While planning begins, some trail work that is necessary to maintain existing access and long-planned meadow restoration activities, will also occur. Some of this work is funded through federal appropriations, some through entrance fee funding, and some from private philanthropy through Washington's National Park Fund. Once the park develops a phased implementation plan additional funding will be sought.



Trail & meadow in need of rehabilitation in Paradise

Working through a contractor the National Park Service completed a full assessment of the wastewater treatment plant and sewer system this past year. We are now in the process of formulating a funding proposal to develop design and engineering alternatives. This proposal will then compete within our region and nationally for funding.