

Harpers Ferry National Historical Park - Objects Available

This is a collection of pharmaceutical bottles, almanacs, and bound volumes of the Proceedings of the American Pharmaceutical Association of the mid-1800s. This collection does not fit into our Scope of Collection. They are now available for transfer to another park or other federal agency, or conveyance to non-federal institutions.

Contact for further information:

Michael Hosking, Museum Curator
Harpers Ferry National Historical Park
PO Box 65
Harpers Ferry, WV 25425-0065
michael_hosking@nps.gov



HAFE 10021 Bottle

Fluid extract of "Hydrastis." small, round, dark brown glass, corked opening, cork flush with opening and sealed with wax. White and brown paper label, two mold seams, seams extend from bottom lip, and slightly recessed bottom with embossed trademark. Bottle dates early 1900's and is one quarter full of liquid.

H 12.7 cm, dia 0.015 cm, base dia. 5.1 cm



HAFE 10022 Flask

"Powdered extract of jalap" small round, dark brown flask, corked opening with wax label, tin mold seams stop just below the lip white paper label printed in black and a slightly recessed bottom. Top surface of cork has a was label but not legible. "H.K. Mulford co." label reads "Powdered/extract/jalap/**/h. K. Mulford co./chemists/phila.

H 8.4 cm, opening dia. 1.9 cm, base dia. 3.3 cm



HAFE 10023 Bottle

Medicine bottle "Powdered extract of aloes" small, round, dark brown glass, label on one side, corked opening, short neck, round shoulders and body, two mold seams stop just below the lip, center of the bottom is slightly recessed and embossed. White paper label with black printing on one side, and the top surface of the cork has a wax stamped label but it is not legible. Half full of contents. Dates late 1800s.

H 3 7/8 (9.8 cm), opening dia 3/4 + l 3/10 w/lip (1.9 or 3 cm) base dia 1 7/8 (4.7 cm)



HAFE 10024 Bottle

Medicine bottle "Corpus luteum" small, round, brown glass, corked opening, but cork is broken off in bottle, two mold seams stop halfway up the neck, slightly recessed embossed bottom and a white paper label, printed in black on one side. Three-quarters full of white powdered contents. Dates late 1800s.

H 3 7/8 (9.8 cm) opening dia 3/4 + 1 3/16 w/lip (1.9 or 3 cm), base dia 1 7/8 (4.7 cm)



HAFE 10025 Bottle

Medicine bottle "Powdered extract of valerian" small, round, bottle, dark brown glass, with corked opening short neck, round body, slightly recessed, embossed bottom, two mold seams that stop at the neck base, a white and black rectangular shape paper label on one side and a black and half printed label on top of the cork. Bottle is three quarters full of a brownish powder. Dates late 1800s.

H 3 1/4 w/o cork (8.3 cm) opening dia 15/16 (2.4 cm), 1 3/8 w/lip (3.1 cm) base dia 1 1/2 (3.8 cm)



HAFE 10026 Bottle

"Medicine bottle "Bottled extract of aloe" small, round, brown glass, corked opening narrow lip, tapers inward just below the opening than becomes fuller. Two seams run up the sides and stop just below the opening. Bottom is slightly recessed in the center and embossed with "S+d/155" label is white paper with black printing. Cork has black paper label on top surface, printed in half color. Contents - brown powder, three quarters full. Dates late 1800.

H 3 1/4 w/o cork (8.3 cm) opening diameter 15/16 + 1/4 lip (2.4 cm x .6 cm) base dia 1 1/2 (3.8 cm)



HAFE 10027 Bottle

Medicine bottle "Digitalis" small, round, brown glass, corked opening, white and red paper label, two mold seams stop just below the lip, and a slightly recessed, embossed bottom. Bottom is empty. Dates late 1800s.

H 3 1/4 (8.3 cm) opening dia 15/16 (2.4 cm), 1/4 w/lip (3.22 cm) base 1 1/2 (3.8 cm)



HAFE 10028 Bottle

Medicine bottle "Digitalis" small, round, brown, glass, cork opening- cork missing, white and red paper label, two mold seams stop just below the lip, and a slightly recessed, embossed bottom. Bottle is empty and dates late 1800s."

H 3 1/4 (8.3 cm), opening dia 15/16 (2.4 cm) 1 1/4 w/lip (3.2 cm) base 1 1/2 (3.8 cm)



HAFE 10029 Bottle

Medicine bottle "Powdered extract of ox gall" small, round, brown glass bottle with corked opening, white and black rectangular paper label, two mold seams that stop and have a very short neck and a slightly recessed, embossed bottom. Top surface of the cork has a black paper label with half printing. Bottle dates late 1800s. Half full of white powder contents.

H 3 3/8 (8.1 cm), opening dia 15/16 (2.4 cm), 1 1/4 w. Lip (3.2 cm) base dia 1 3/4 (8.3 cm)



HAFE 10030 Bottle

Medicine bottle "Powdered extract of podophyllum" small, round brown bottle, corked opening, short neck, rounded shoulders, round body, two mold seams that stop at base of the neck, slightly recessed, embossed bottom and a white and black keystone shape paper label on one side and a wax covered label on the cork's top surface. Bottle dates late 1800s and contains half bottle of brownish powder.

H 3 5/8 w/o cork (8.5 cm) opening dia 15/16 (2.4 cm) 1 3/16' w/lip (3 cm) base dia 1 3/4 (4.5 cm)



HAFE 10032 Bottle

Medicine bottle liquid 'herbitol' rectangular, clear glass, corked opening, (cork broken off in opening) tapering shoulders, two diagonal seams that run from the bottom through the lip, slight recessed embossed bottom and a white with brown printed rectangular paper label on one side. Full of dark brown liquid. Date 20th century.

H 6 1/4 (15.9 cm) opening dia 5/8 (1.5 cm) neck and rim 1 1/4 h (3.2 cm) body 5 h 912.7) 1 1/16 w/lip (2.7 cm)



HAFE 10035 Bottle

Medicine bottle "Oil Nutmegs" small, round, greenish-brown glass, corked opening, white paper label with black printing, seamed from bottom through lip, and a slightly recessed bottom with embossed trademark. Dates early 1900s.

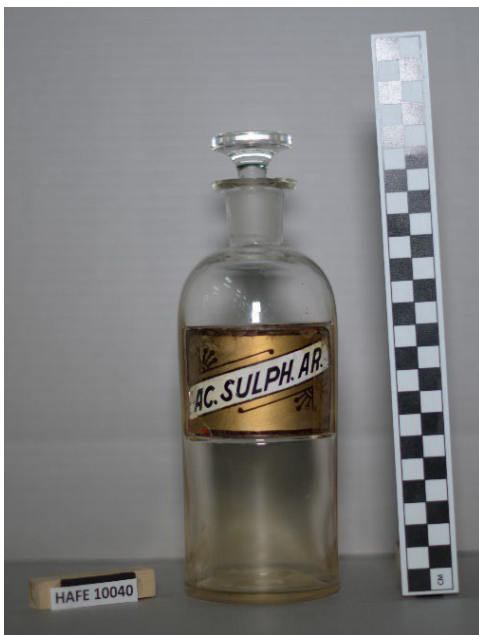
H 3 1/4 (8.3 cm), opening dia 1/2 (1.2 cm) neck & rim 1 5/8 h 3/4 (1.9 cm) base dia 1 1/4 (3.2)



HAFE 10036 Bottle

Medicine bottle "Fluid extract triticum" small, round, dark brown glass bottle with cork opening (cork broken off down in opening), flared lip, short neck, seams from bottom through top of lip, slightly recessed, embossed bottom, and two-tone brown rectangular shape label on one side. Bottle is empty-stained and dates 20th century.

H 5 w/o cork (12.7 cm) opening dia 1/2 (1.2) neck & rim 1' h 1' w/lip (2.5) base dia 1 7/8 (4.8 cm)



HAFE 10040 Bottle

Medicine bottle "Ac. Sulph. Ar" round, clear glass, thick - glass mushroom stopper, narrow mouth, round shoulders, mold seams run halfway up the neck, recessed area with glass label (gold background with a diagonals white content strip printed in black "Ac. Sulph ar.") and the bottom is slightly recessed in the center and embossed.

H 8 1/2 w/stopper (21.6cm) stopper dia 1 7/16 x 2' l (3.1 +5.1) opening dia 3/4 x 1 9/16 w/lip (1.9 +_ 1.4) neck & rim 1 1/4 h (3.2) body 6 3/4 h shank dia 5/8 (1.5cm) base dia 2 7/8 (6.2) label recess 2 h x 3 1/4 w (5.1 x 8.3) label 1 7/8 h x 3 1/3 (4.8 x 8.3)



HAFE 10041 Bottle

Medicine bottle "Tr lobelia" round, clear glass, narrow mouth, uneven lip, round shoulders, plain body except for curved glass labels, on one side, and a flat bottom, mold marks are not visible. No recessed area for label- label is curved to fit the bottle. Label has gold background, trimmed, and printed in black, reads: "Tr lobelia?".

H 9 1/4 (23.5) opening dia 1 9/16 w/lip (4cm) neck & rim 1 1/2 h (3.8cm) body c. 8 h (20.3) base dia 3 1/2 (8.8 cm) label 2 h x 3 3/4 w (remains) (5.1 x 9.5)



HAFE 10042 Bottle

Medicine bottle "Elix, arom, rub" round, thick, clear glass, mushroom stopper, narrow mouth, wide lip, round shoulders, body is plain except for recessed area containing a paper label, printed 'elix./arom, rub' and the bottom is slightly recessed and embossed.

H 10 1/4 w/stopper 926.1 cm) stopper dia 1 3/4 x 2 1/2" l (4.5 x 6.3) shank dia 3/4 opening dia 7/8 x 1 7/8 w/lip, neck & rim 1 3/4 h (4.5) body c 8 h (20.3) base dia 3 5/8 (8.4 cm) label recess 2 h x 3/4 w (5.1 x 9.5)
label 2h x 3 w (5.1 x 7.6)



HAFE 10043

Medicine bottle "Chloroformum" round, clear glass, thick-glassed double mushroom stopper with long shank; narrow mouth, wide lip, round shoulders and body, and a slight recessed base. Body has a paper label affixed to one side reading: "Chloroformum" stopper fits loosely-syrup stopper.

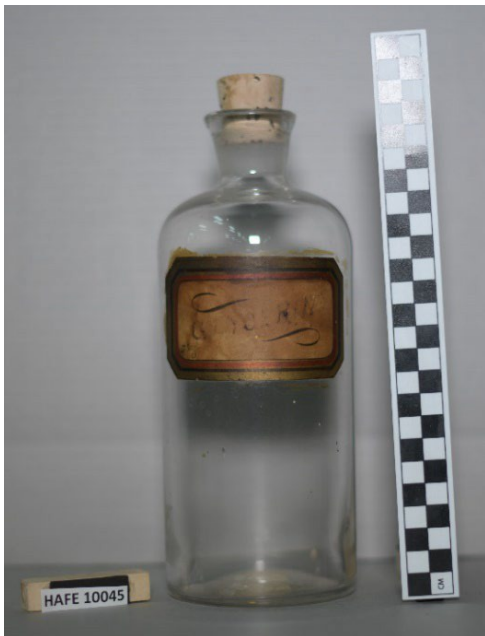
H 10 1/4 w/stopper (26.1 cm) stopper dia 1 11/16 x 2 7/8" l shank dia 1/2 (1.2), opening dia 1 x 1 13/16 w/lip neck & rim 1 5/8 h (4.2) body c 8 h (20.3) base dia 1 7/16 (3.1) label 2 h x 3 w (5.1 x 7.6)



HAFE 10044 Bottle

Medicine bottle "Liq/cresol" round, clear glass, narrow mouth, wide lip, round shoulders and body, slight recessed bottom with rough pontil in the center, no mold seams visible and a paper label "Liq/cresol. Co." on one side.

H $9 \frac{1}{8}$ (23) opening dia $\frac{7}{8} \times 1 \frac{15}{16}$ w/lip (2.5 x 4.8) neck & rim 2 h x 3 w (5.1 x 7.6 cm)



HAFE 10045 Bottle

Medicine bottle "Glycerin" round, clear glass, mouth is wider than normal for tincture, lip uneven, round shoulders and flat bottom, paper label "Glycerin" glued to one side. No mold seam visible.

H 9 (22.8 cm) opening dia c. $1 \frac{1}{8} \times 1 \frac{3}{4}$ w/lip neck rim $1 \frac{1}{4}$ h (3.2)

base dia $3 \frac{1}{3}$ (8.9 cm) label $2 \frac{1}{8}$ h x $3 \frac{15}{16}$ w (5.4 x 10 cm)



HAFE 10046 Bottle

Medicine bottle "Ant. E. Pot. T." small, clear glass, saltmouth, thin, uneven lip, clear glass, mushroom stopper with hollow shank and two mold seams; uneven lip; round neck, squared shoulders and round body seamed from base to top edge of neck, uneven bottom and a glass label on one side "Ant. E. Pot.T."

H 4 w/stopper (10.1 cm) stopper dia $1 \frac{1}{8} + 1 \frac{1}{4}$ h (2.8 x 3.2) shank

dia 1 (2.5) opening dia $1 \frac{1}{8} + 1 \frac{1}{2}$ w/lip $1 \frac{11}{16}$ (4.3 cm) label $1 \frac{1}{8}$ h and 2 w (2.8 x 5.1 cm)



HAFE 10047 Bottle

Medicine bottle "Glucosum" round, clear glass, saltmouth, clear glass, mushroom stopper with hollow shallow uneven lip, round shoulders and body, and the base is slightly recessed with rough pontil. Paper label glued to one side "Glusosum."

H 7 w/stopper (17.8 cm) stopper dia 1 3/8 + 1 3/8 h (3 x 3 cm) opening dia 1 3/8 x 2 1/8 (3 x 5.4 cm) neck & rim 1 h (2.5) body 5 1/4 (13.3) shank dia 1 1/4 base dia 2 1/2 label 2' h x 3 w (5.1 x 7.6)



HAFE 10048 Bottle

Medicine bottle "Dextrosum" round, clear glass, saltmouth clear glass, mushroom stopper with hollow shank, two mold seams; uneven lip, round neck and shoulders, bottom has a slight recessed center with rough pontil. Paper label glue to one side of the body, reads: "Dextrosum."

H 6 1/2 w/stopper (16.5) stopper dia 1 3/8 x 1 3/8 h shank dia 1 1/4 (3.2 cm) opening dia 1 3/8 x 2 w/lip (3 x 5.1 cm) neck & rim 3/4 (1.9 cm), base dia 3 1/4 (5.7 cm) label 2 h x 3 w (5.1 x 7.6)



HAFE 10049 Bottle

Medicine bottle "Thymol" round, clear glass, saltmouth, thick glass, mushroom stopper with hollow shank, and two mold seams; uneven wide lip, short neck, round shoulders and body and the bottom has a slight recessed center with a rough pontil. No mold seams visible in body. Paper label glued to one side, reads: "Thymol/iod."

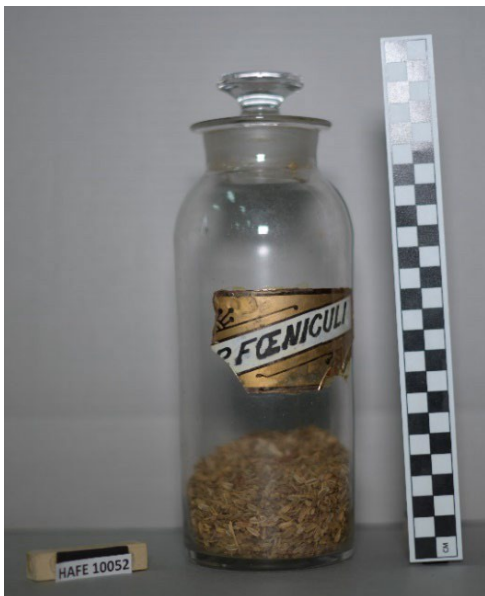
H 8 1/8 w/stopper (20.4 cm), stopper dia 1 1/2 x 1 7/8 h (3.8 x 4.8 cm), shank dia 1 1/2 (3.8) opening dia 1 5/8 x 2 3/8 w/lip 3.3 x 5.6 cm) neck & rim 3/4 h (1.9) body c. 6 1/4 h (15.8 cm) base dia 2 1/2 (6.3) label 2 h x 3 w (5.1 x 7.6 cm)



HAFE 10050 Bottle

Medicine bottle "Sucrosum" round, clear glass, saltmouth, mushroom stopper with hollow shank, and two mold seams; uneven with lip, short neck, round shoulders and body, recessed area for label-containing a paper label "Sucrosum" and the bottom is slightly recessed in the center. Mold seam stops half-way up the neck.

H 8 w/stopper (20.3cm), stopper dia $1 \frac{5}{8}$ x $1 \frac{11}{14}$ h shank diameter $1 \frac{11}{16}$ (4.3) opening dia $1 \frac{13}{16}$ x $2 \frac{1}{16}$ w/lip (4.6 x 6.5cm) neck & rim 1 h (2.5cm) body $6 \frac{1}{4}$ h (15.8 cm), base dia $2 \frac{7}{8}$ (7.3cm) label recess 4 h x $3 \frac{1}{2}$ (5.1 x 8.9 cm) label 2 h x 3 (5.1 x 7.6cm)



HAFE 10052 Bottle

Medicine bottle "P. Foeniculi" round, clear glass, saltmouth, thick-glass, mushroom stopper with hollow shank and two mold seams; shortneck, round shoulders and body, no mold seams and bottom are slightly recessed in the center and has a rough pontil. One side of bottle has a curved slightly recessed in the center and has a rough pontil. One side of bottle has a curved glass label "P" (lower portion of p is missing) foeniculi" no recess for label, just glued.

H $9 \frac{3}{4}$ w/stopper (24.7 cm) stopper dia $1 \frac{3}{4}$ x 2 h (4.5 x 5.1cm) shank dia 2 (5.1cm), opening dia $2 \frac{1}{8}$ x $2 \frac{7}{8}$ w/lip dia $3 \frac{1}{4}$ (8.3cm) label $1 \frac{7}{8}$ h (19.7cm) base dia $3 \frac{1}{4}$ (8.3cm) label $1 \frac{7}{8}$ h x $3 \frac{1}{4}$ w (4.8 x 8.3cm)



HAFE 10053 Bottle

Medicine bottle "Buchu" round, clear glass, saltmouth, thick-glass mushroom stopper with hollow shank and two mold seams; narrow lip, short neck, round shoulders and body, and the bottom has a deep recessed center. Paper label glued at one side of the bottle "Buchu."

H 10 (23.4 cm) w/stopper, stopper dia 2 1/4 x 2 1/8 h (5.7 x 5.4 cm) opening dia 2 1/8 x 2 3/4 w/lip (5.4 x 7 cm), neck & rim 3/4 h (1.9), body 8 1/4 h (21 cm) shank dia 1 7/8 (4.7 cm) label 3 h x 3 w (5.1 x 7.6 cm) base dia 3 1/2 (8.0 cm) recess area c. 2 1/2 (6.3 cm)



HAFE 10054 Bottle

Medicine bottle "Glycyrrhiza" round, clear glass, saltmouth, mushroom stopper with hollow shank and two mold seams; round shoulders and body, recess for label, paper label "Glycyrrhiza," mold seam from bottom half-way up the neck and a recessed bottom, embossed "W.T. & co."

H 9 3/4 w/stopper (24.7 cm), stopper dia 1 7/8 x 1 7/8 h (4.8 x 4.8), shank dia 2 (5.1) opening dia 2 1/4 x 3 w/lip (5.7 x 7.6 cm) neck & rim, 1 1/4 h (3.2) body c. 7 1/2 h (19 cm) base dia 3 3/4 (9.5 cm) label recess 2 h x 3 5/8 w (5.1 x 8.4 cm) label 2 x 3 (5.1 x 7.6 cm)



HAFE 10055 Bottle

Medicine bottle "Mag. Sulph" round, clear glass, saltmouth, mushroom stopper with hollow shank, two mold seams, round shoulders and body, recess for label, paper label reading "Mag/sulph" mold seams from bottom to half-way up the neck, bottom slight recessed and embossed "W.T. & co."

H 25.0 W 9.3 CM



HAFE 10056 Bottle

Medicine bottle. Round, clear glass, saltmouth, mushroom stopper with hollow shank, two mold seams, short neck, round shoulders and body, no mold seam visible and the bottom is flat with a rough pontil in the center. Fragment of glass label and outline of label on one side. Nothing legible on label - just portions of glass, white, red, black, and gold paint. Stopper stuck in bottle.

H 9 3/4 w/stopper (24.7 cm) stopper dia 2 1/4 (5.7 cm) opening dia c. 2 1/8 x c. 2 3/4 w/lip (5.4 x 7 cm), neck & rim 3/4 h (1.9 cm) body 8 h (20.3 cm) base dia 3 3/8 (8.6 cm)



HAFE 10057 Bottle

Tall, square, clear purplish tint glass with one panel embossed. Mushroom stopper with soiled, ground shank and no mold seams visible.

22.8 H X 7.3 DIA (CM), 9 H X 2 7/8 DIA (INCHES)



HAFE 10058 Bottle

Medicine bottle "Sarsaparilla" rectangular, green glass, cork opening and embossing on the panelled body "Hood's sarsaparilla." opening is small, thick lip, long neck, square shoulders, and sides of the body area recessed and embossed. Diagonal mold seams that stop half-way up the neck and across the bottom. Seam on the bottom is not visible where it gains the slight circular push-up indentation.

H 9 w/o cork (22.8 cm), opening dia 9/16 x 1 1/4 w/lip, neck & rim 2 h (5.1 cm) body c. 7 h (17.8 cm) base dia 1 3/4 x 3 (4.5 x 7.6 cm)



HAFE 10059 Percolator

Percolator, tubulator, without stopper. Round, thin, clear glass, no stopper and a tubulature piece of glass near the bottom of the body for expelling the contents. No mold seams. Side has an engraved trademark of a letter "K" and elongated horizontal diamond below it.

Percolator used to extract drugs.

H 7 1/4 (18.4 cm), opening dia 1 1/8 x 1 7/8 w/lip (2.8 x 4.8 cm) neck & rim 1 1/4 h (3.2 cm), body 6 1/4 h (15.8 cm) tubulature 1 1/2 l (3.8 cm) expelling hole dia 1/4



HAFE 10060 Bottle

Medicine bottle "Acetanlid" square, dark brown glass, salt mouth glass stopper and recessed area for glass covered label.

Stopper is round mushroom design, hollow ground shank and seams visible on two sides. Bottle has round shoulders, seamed on two sides, which stop half-way up the neck, recessed area on front for label and the bottom has a slight recess center. Label is white paper with solid red line rectangle within which the contents is printed in large black print.

Bottom of the bottle is recessed and embossed in circular form with the patent date in initials of the manufacturing company.

H 5 1/8 (13 cm) w/stopper and w/o stopper 4 3/8 (11.1 cm) top flat surface 1 1/8 (2.8 cm) h 1 1/4 (3.2 cm) base 1 3/16 (3.1 cm) bottle h w/o stopper 4 3/8 (11.1 cm) neck 1 h w/lip (2.5 cm), base 2 x 1 13/16 (5.1 x 4.7 cm)



HAFE 10062 Bottle

Medicine bottle "Acid tartaric" square, dark brown, glass salt-mouth glass stopper and recessed area for glass covered label.

Stopper is round mushroom design, hollow ground shank and seams visible on two sides. Bottle has round shoulders, seamed on two sided, which stop half-way up the neck, recessed area on front for label and the bottom has a slight recess center. Label is white paper with solid red line rectangle within which the contents is printed in large black print.

Bottom of the bottle is recessed and embossed in circular form with the patent date and initials of the manufacturing company.

H 5 1/8 (13 cm) w/stopper and w/o stopper 4 3/8 (11.1 cm) top flat surface 1 1/8 (2.8 cm) h 1 1/4 (3.2 cm) base 1 3/16 (3.1 cm) bottle h w/o stopper 4 3/8 (11.1 cm) neck 1 h (2.5 cm) w/lip, base 2 x 1 13/16 (5.1 x 4.7 cm)



HAFE 10063 Bottle

Medicine bottle "Ammon, chlor" square, dark brown glass, salt-mouth, glass stopper and recessed area for glass covered label. Stopper has round mushroom design, hollow ground shank and seams visible on two sides, bottle has round shoulders, seamed on two sides, which stop half-way up the neck, recessed area on front for label and the bottom has a slight recess center. Label is white paper with solid red line rectangle within which the contents is printed in large black print. Bottom of the bottle is recessed and embossed in circular form with the patent date and initials of the manufacturing company.

H 5 1/8 (13 cm) w/stopper and w/o stopper 4 3/8 (11.1 cm) top flat surface 12 1/8 (2.8 cm) h 12 1/4 (3.2 cm) base 1 3/16 (3.1 cm) bottle - h w/o stopper - 4 3/8 (11.1 cm) neck 1 h w/lip (2.5 cm) base 2 x 1 13/16 (5.1 x 4.7 cm)



HAFE 10064 Bottle

Medicine bottle "Antipyrina" square, dark brown glass, saltmouth glass stopper and recessed area for glass covered label. Stopper is round mushroom design, hollow ground shank and seams visible on two sides. Bottle has round shoulders, seamed on two sides, which stop halfway up the neck, recessed area on front for label and the bottom has a slight recess center. Label is white paper with solid red line rectangle within which the contents is printed in large black print.

Bottom of the bottle is recessed and embossed in circular form with the patent date and initials of the manufacturing company.

H 5 1/8 (13 cm) w/stopper and w/o stopper 4 3/8 (11.1 cm) stopper top. flat surface 1 1/8 (2.8 cm) h 1 1/4 (3.2) base 1 3/16 (3.1 cm) bottle h w/o stopper 4 3/8 (11.1 cm) neck 1 h w/lip (2.5 cm) base 2 x 1 13/16 (5.1 x 4.7 cm)



HAFE 10065 Bottle

Medicine bottle "Argent. Nit" square, dark brown glass, saltmouth glass stopper and recessed area for glass covered label. Stopper is round mushroom design, hollow ground shank and seams visible on two sides. Bottle has round shoulders, seamed on two sides, which stop halfway up the neck, recessed area on front for label and the bottom has a slight recess center. Label is white paper with solid red line rectangle within which the contents is printed in large black print.

Bottom of the bottle is recessed and embossed in circular form with the patent date and initials of the manufacturing company.

H 5 1/8 (13 cm) w/stopper and w/o stopper 4 3/8 (11.1) stopper top flat surface 1 1/8 (2.8 cm) h 1 1/4 (3.2) base 1 3/16 (3.1 cm) bottle h w/o stopper 4 3/8 (11.1 cm) neck 1 h w/lip (2.5 cm) base 2 x 1 13/16 (5.1 x 4.7 cm)



HAFE 10066 Bottle

"Bismuth/subgal" square, dark brown glass, saltmouth glass stopper and recessed area for glass covered label. Stopper is round mushroom design, hollow ground shank and seams visible on two sides. Bottle has round shoulders, seamed on two sides, which stop halfway up the neck, recessed area on front for label and the bottom has a slight recess center. Label is white paper with solid red line rectangle within which the contents is printed in large black print. Bottom of the bottle is recessed and embossed in circular form with the patent date and initials of the manufacturing company.

H 5 1/8 (13 cm) w/stopper and w/o stopper - 4 3/8 911.1 cm) stopper - top flat surface 1 1/8 92.8 cm) h 1 1/4 (3.2 cm) base 1 3/16 (3.1 cm) bottle h w/o stopper 4 3/8 (11.1 cm) neck 1 h w/lip (2.5 cm) base 2 x 1 13/16 (5.1 x 4.7 cm)



HAFE 10067 Bottle

Medicine bottle "Bismuth/subcarb." square, dark brown, saltmouth glass stopper and recessed area for glass covered label. Stopper is round mushroom design, hollow ground shank and seams visible on two sides. Bottle has round shoulders, seamed on two sides, which stop halfway up the neck, recessed area on front for label and the bottom has a slight recess center. Label is white paper with solid red line rectangle within which the contents is printed in large black print. Bottom of the bottle is recessed and embossed in circular form with the patent date and initials of the manufacturing company.

H 5 1/8 913 cm) w/stopper and w/o stopper 4 3/8 (11.1 cm) stopper- top flat surface 1 1/8 (2.8 cm) h 1 1/4 (3.2 cm) base 1 3/16 (3.1 cm) bottle h w/o stopper 4 3/8 (11.1 cm) neck 1 h w/lip (2.5 cm) bse 2 x 13/16 (5.1 x 4.7 cm)



HAFE 10068 Bottle

Medicine bottle "Chloral/hydrat" square, dark brown glass, saltmouth glass stopper and recessed area for glass covered label. Stopper is round mushroom design, hollow ground shank and seams visible on two sides. Bottle has round shoulders, seamed on two sides, which stop halfway up the neck, recessed area on front for label and the bottom has a slight recess center. Label is white paper with solid red line rectangle within which the contents is printed in large black print. Bottom of the bottle is recessed and embossed in circular form with the patent date and initials of the manufacturing company.

H 5 1/8 (13 cm) w/stopper and w/o stopper 4 3/8 (11.1 cm) stopper - top flat surface 1 1/8 (2.8 cm) h 1 1/4 (3.2 cm) bse 1 3/16 (3.1 cm) bottle h w/o stopper 4 3/8 911.1 cm) neck 1 h w/lip (2.5 cm) base 2 x 1 13/16 (5.1 x 4.7 cm)



HAFE 10069 Bottle

Medicine bottle "Ext..Nuc.Vom." square, dark brown glass, saltmouth glass stopper and recessed area for glass covered label. Stopper is round mushroom design, hollow ground shank and seams visible on two sides. Bottle has round shoulders, seamed on two sides, which stop halfway up the neck, recessed area on front for label and the bottom has a slight recess center. Label is white paper with solid red line rectangle within which the contents is printed in large black print.

Bottom of the bottle is recessed and embossed in circular form with the patent date and initials of the manufacturing company.

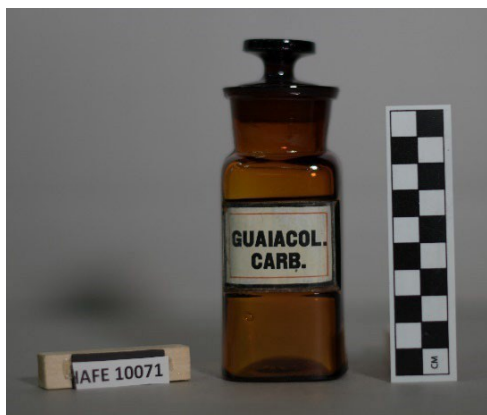
H 5 1/8 (13 cm) w/stopper and w/o stopper - 4 3/8 (11.1 cm) stopper - top flat surface - 1 1/8 (2.8 cm) h 1 1/4 (3.2 cm) base 1 3/16 (3.1 cm) bottle h w/o stopper 4 3/8 (11.1 cm) neck 1 h w/lip (2.5 cm), base 2 x 1 13/16 (5.1 x 4.7 cm)



HAFE 10070 Bottle

Medicine bottle "Glycyrrh." square, dark brown glass, saltmouth glass stopper and recessed area for glass covered label. Stopper is round mushroom design, hollow ground shank and seams visible on two sides. Bottle has round shoulders, seamed on two sides, which stop halfway up the neck, recessed area on front for label and the bottom has a slight recess center. Label is white paper with solid red line rectangle within which the contents are printed in large black print. Bottom of the bottle is recessed and embossed in circular form with the patent date and initials of the manufacturing company.

H 5 1/8 (13 cm) w/ Stopper and w/o stopper 4 3/8 (11.1 cm) stopper top flat surface 1 1/8 (2.8 cm) h 1 1/4 (3.2 cm) base 1 3/16 (3.1 cm) bottle - h w/o stopper 4 3/8 (11.1 cm) neck 1 h w/lip (2.5 cm) base 3 x 1 13/16 (5.1 x 4.7 cm)



HAFE 10071 Bottle

"Guaiacol./carb" square, dark brown glass, saltmouth glass stopper and recessed area for glass covered label. Stopper is round mushroom design, hollow ground shank and seams visible on two sides. Bottle has round shoulders, seamed on two sides, which stop halfway up the neck, recessed area on front for label and the bottom has a slight recess center. Label is white paper with solid red line rectangle within which the contents is printed in large black print. Bottom of the bottle is recessed and embossed in circular form with the patent date and initials of the manufacturing company.

H 5 1/8 (13 cm) w/stopper and w/o stopper 4 3/8 (11.1 cm) stopper - top flat surface - 1 1/8 (2.8 cm) h 1 1/4 (3.2 cm) base 1 3/16 (3.1 cm) bottle h w/o stopper 4 3/8 (11.1 cm) neck 1 h w/lip (2.5 cm) base 2 x 1 13/16 (5.1 x 4.7 cm)



HAFE 10072 Bottle

Medicine bottle "Ipecac" square, dark brown glass, saltmouth glass stopper and recessed area for glass cover label. Stopper is round mushroom design, hollow ground shank and seams visible on two sides. Bottle has round shoulders, seamed on two sides, which stop halfway up the neck, recessed area on front for label and the bottom has a slight recess center. Label is white paper with solid red line rectangle within which the contents are printed in large black print. Bottom of the bottle is recessed and embossed in circular form with the patent date and initials of the manufacturing company.

H 5 1/8 (13 cm) w/stopper and w/o stopper 4 3/8 (11.1 cm) stopper-top flat surface - 1 1/8 (2.8 cm) h 1 1/4 (3.2 cm), bse 1 3/16 (3.1 cm) bottle h w/o stopper 4 3/8 (11.1 cm) neck 1 h w/lip (2.5 cm), base 2 x 1 13/16 (5.1 x 4.7 cm)



HAFE 10073 Bottle

Medicine bottle "Potass./chloras." square, dark brown glass, saltmouth, glass stopper and recessed area for glass covered label. Stopper is round mushroom design, hollow ground shank and seams visible on two sides. Bottle has round shoulders, seamed on two sides, which stop halfway up the neck, recessed area on front for label and the bottom has a slight recess center, label is white paper with solid red line rectangle within which the contents are printed in large black print.

Bottom of the bottle is recessed and embossed in circular form with the patent date and initials of the manufacturing company.

H 5 1/8 (13 cm) w/stopper and w/o stopper 4 3/8 (11.1 cm) stopper-top flat surface - 1 1/8 (2.8 cm) h 1 1/4 (3.2 cm), base 1 3/16 (3.1 cm) bottle h w/o stopper - 4 3/8 (11.1 cm) neck 1 h w/lip (2.5 cm) base 2 x 1 13/16 (5.1 x 4.7 cm)



HAFE 10074 Bottle

Medicine bottle "Potass./citrass" square, dark brown glass, saltmouth glass stopper and recessed area for glass covered label. Stopper is round mushroom design, hollow ground shank and seams visible on two sides. Bottle has round shoulders, seamed on two sides, which stop half-way up the neck, recessed area on front for label and the bottom has a slight recess center. Label is white papaer with solid red line rectangle within which the contents are printed in large black print.

Bottom of the bottle is recessed and embossed in circular form with the patent date and initials of the manufacturing company.

H 5 1/8 (13 cm) w/stopper and w/o stopper 4 3/8 (11.1 cm) stopper-top flat surface 1 1/8 (2.8 cm) h 1 1/4 (3.2 cm) base 1 3/16 (3.1 cm) bottle h w/o stopper 4 3/8 (11.1 cm) neck 1 h w/lip (2.5 cm) base 2 x 1 13/16 (5.1 x 4.7 cm)



HAFE 10075 Bottle

Medicine bottle "Resina/jalap" square, dark brown glass, saltmouth, glass stopper, and recessed area for glass covered label. Stopper is round mushroom design, hollow ground shank and seams visible on two sides. Bottle has round shoulders, seamed on two sides, which stop halfway up the neck, recessed area on front for label and the bottom has a slight recess center. Label is white paper with solid red line rectangle within which the contents are printed in large black print. Bottom of the bottle is recessed and embossed in circular form with the patent date and initials of the manufacturing company.

H 5 1/8 (13 cm) w/ Stopper and w/o stopper 4 3/8 (11.1 cm) stopper-top flat surface - 1 1/8 (2.8 cm) h 1 1/4 (3.2 cm) base 1 3/16 (3.1 cm) bottle - h w/o stopper 4 3/8 (11.1 cm) neck 1 h w/lip (2.5 cm) bse 2 x 1 13/16 (5.1 x 4.7 cm)



HAFE 10076 Bottle

Medicine bottle "Acid. Tar taric" square, dark brown glass, saltmouth glass stopper and recessed area for glass covered label. Stopper is round mushroom design, hollow ground shank and seams visible on two sides. Bottle has round shoulders, seamed on two sides, which stop halfway up the neck, recessed area on front for label and the bottom has a slight recess center. Label is white paper with solid red line rectangle within which the contents are printed in large black print. Bottom of the bottle is recessed and embossed in circular form with the patent date and initials of the manufacturing company.

H 5 1/8 (13 cm) w/stopper and w/o stopper 4 3/8 (11.1 cm) stopper-top flat surface 1 1/8 (2.8 cm) h 1 1/4 (3.2 cm) base 1 3/16 (3.1 cm) bottle- h w/o stopper 4 3/8 (11.1 cm) neck 1 h w/lip (2.5 cm) base 2 x 1 13/16 (5.1 x 4.7 cm)



HAFE 10077 Bottle

"Ammon, chlorid" square, dark brown glass, saltmouth glass stopper and recessed area for glass covered label. Stopper is round mushroom design, hollow ground shanks and seams visible on two sides. Bottle has round shoulders, seamed on two sides, which stop halfway up the neck, recessed area on front for label and the bottom has a slight recess center. Label is white paper with solid red line rectangle within which the contents are printed in large black print and initials of the manufacturing company.

H 5 1/8 (13 cm) w/ stopper and w/o stopper 4 3/8 (11.1 cm) stopper-top flat surface - 1 1/8 (2.8 cm) h 1 1/4 (3.2 cm) base 1 3/16 (3.1 cm) bottle h w/o stopper 4 3/8 (11.1 cm) neck 1 h w/lip (2.5 cm) base 2 x 1 13/16 (5.1 x 4.7 cm)



HAFE 10078 Bottle

Medicine bottle "Ammon.Chlorid" square, dark brown glass, saltmouth glass stopper and recessed area for glass covered label. Stopper is round mushroom design, hollow ground shank and seams visible on two sides. Bottle has round shoulders, seamed on two sides, which stop halfway up the neck, recessed area on front for label and the bottom has a slight recess center. Label is white paper with solid red line rectangle within which the contents is printed in large black print.

Bottom of the bottle is recessed and embossed in circular form with the patent date and initials of the manufacturing company.

H 5 1/8 (13 cm) w/stopper and w/o stopper 4 3/8 (11.1 cm) stopper-top flat surface 1 1/8 (2.8 cm) h 1 1/4 (3.2 cm) base 1 3/16 (3.1 cm) bottle - h w/o stopper 4 3/8 (11.1 cm) neck 1 h w/lip (2.5 cm) base 2 x c 1 13/16 (5.1 x 4.7 cm)



HAFE 10079 Bottle

Medicine bottle "Antipyrina" square dark brown glass, saltmouth glass stopper and recessed area for glass covered label. Stopper is round mushroom design, hollow ground shank and seams visible on two sides. Bottle has round shoulders, seamed on two sides, which stop halfway up the neck, recessed area on front for label and the bottom has a slight recess center. Label is white paper with solid red line rectangle within which the contents are printed in large black print.

Bottom of the bottle is recessed and embossed in circular form with the patent date and initials of the manufacturing company.

H 5 1/8 (13 cm) w/stopper and w/o stopper 4 3/8 (11.1 cm) stopper - top flat surface 1 1/8 (2.8 cm) h 1 1/4 (3.2 cm) base 1 3/16 (3.1 cm) bottle h w/o stopper 4 3/8 (11.1 cm) neck 1 h w/lip (2.5 cm) base 2 x c 1 13/16 (5.1 x 4.7 cm)



HAFE 10080 Bottle

"Bismuth/subgal" square, dark brown glass, saltmouth glass stopper and recessed area for glass covered label. Stopper is round mushroom design, hollow ground shank and seams visible on two sides. Bottle has round shoulders, seamed on two sides, which stop halfway up the neck, recessed area on front for label and the epitome has a slight recess center. Label is white paper with solid red line rectangle within which the contents are printed in large black print. Bottom of the bottle is recessed and embossed in circular form with the patent date and initials of the manufacturing company.

H 5 1/8 (13 cm) w/stopper and w/o stopper 4 3/8 (11.1 cm) stopper-top flat surface 1 1/8 (2.8 cm) h 1 1/4 (3.2 cm) base 1 3/16 (3.1 cm) bottle h w/o stopper 4 3/8 (11.1 cm) neck 1 h w/lip (2.5 cm) base 2 x c 1 13/16 (5.1 x 4.7 cm)



HAFE 10081 Bottle

Medicine bottle "Ext nuc. Vom" square, dark brown glass, saltmouth glass stopper and recessed area for glass covered label. Stopper is round mushroom design, hollow ground shank and seams visible on two sides. Bottle has round shoulders, seamed on two sides, which stop halfway up the neck, recessed area on front for label and the bottom has a slight recess center. Label is white paper with solid red line rectangle within which the contents are printed in large black print. Bottom of the bottle is recessed and embossed in circular form with the patent date and initials of the manufacturing company.

H 5 1/8 (13 cm) w/stopper and w/o stopper 4 3/8 (11.1 cm) stopper-top flat surface 1 1/8 (2.8 cm) h 1 1/4 (3.2 cm) base 1 3/16 (3.1 cm) bottle h w/o stopper 4 3/8 (11.1 cm) neck 1 h w/lip (2.5 cm) base 2' x 1 13/16 (5.1 x 4.7 cm)



HAFE 10082 Bottle

Medicine bottle "Resina jalap" square, dark brown glass, saltmouth glass stopper and recessed area for glass covered label. Stopper is round mushroom design, hollow ground shank and seams visible on two sides. Bottle has round shoulders, seamed on two sides, which stop halfway up the neck, recessed area on front for label and the bottom has a slight recess center. Label is white paper with solid red line rectangle within which the contents are printed in large black print. Bottom of the bottle is recessed and embossed in circular form with the patent date and initials of the manufacturing company.

H 5 1/8 (13 cm) w/stopper and w/o stopper 4 3/8 (11.1 cm) stopper-top flat surface 1 1/8 (2.8 cm) h 1 1/4 (3.2 cm) base 1 3/16 (3.1 cm) bottle h w/o stopper 4 3/8 (11.1 cm) neck 1 h w/lip (2.5 cm) base 2 x 1 13/16 (5.1 x 4.7 cm)



HAFE 10083 Bottle

Medicine bottle "Resina jalap" square, dark brown glass, saltmouth glass stopper and recessed area for glass covered label. Stopper is round mushroom design, hollow ground shank and seams visible on two sides. Bottle has round shoulders, seamed on two sides, which stop halfway up the neck, recessed area on front for label and the bottom has a slight recess center. Label is white paper with solid red line rectangle within which the contents is printed in large black print. Bottom of the bottle is recessed and embossed in circular form with the patent date and initials of the manufacturing company.

H 5 1/8 (13 cm) w/stopper and w/o stopper 4 3/8 (11.1 cm) stopper - top flat surface 1 1/8 (2.8 cm) h 1 1/4 (3.2 cm) base 1 3/16 (3.1 cm) bottle h w/o stopper 4 3/8 (11.1 cm) neck 1 h w/lip (2.5 cm) base 2 x 1 13/16 (5.1 x 4.7 cm)



HAFE 10084 Apothecary Jar w/ Lid

Apothecary jar with lid. Tall, clear glass, round fuller at top of the body and tapers inward at the bottom. Lid has a knob w with a dome top, a wider decorative edge consisting of finger-tip indentities, short neck that flares out to form the lower half of the lid and three mold seams. Jar body - neck carries the same decorations around the top edge of the lid and below are two rows of squares containing triangles and diamond designs, body is plain except for the two mold seams down two sides. Bottom is slightly recessing and has a narrow resting rim.

H 13 3/4 (34.9 cm) w/lid, lid 1 1/4 (3.2 cm) h, bottom 3 13/16 dia, base 4 1/4 dia (10.8 cm) opening 4 1/2 (11.4 cm) dia including rim, neck 2 5/8 h w/rim (6.7 cm) body c. 8 7/8 h (22.5 cm)



HAFE 10085 Graduate

Graduate. Tall, engraved measure, round, clear glass, wide mouth, wide uneven rim, plain body except for engraved american scale down one side and the bottom has a rough pontel mark. Graduate used to measure specific gravity of solids.

H 11 3/4 (29.8 cm) base 4 1/2 dia (11.4 cm) opening 2 5/8 x 3 5/8 (6.7 x 8.4 cm) w/lip, neck 1 3/4 h (4.5 cm) w.Lip body 10 3/8 (26.3 cm)



HAFE 10086 Graduate

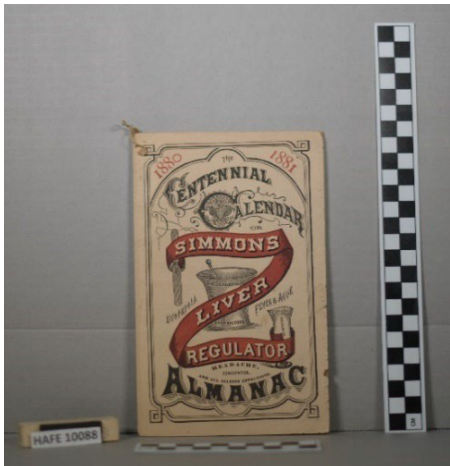
Graduate. Tall, round, clear glass, 1 7/8.



HAFE 10087 Bottle

Clear glass, corked stopper with pouring spout, and a hollow shank. Backside of the shank has a 7/8" long x 1/8" wide groove formed in the glass. Stopper seamed down the sides.

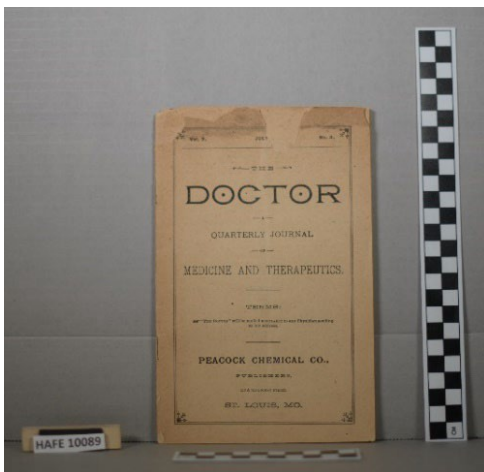
5.1H X 2.2 DIA (CM), 2H X 7/8 DIA (INCHES)



HAFE 10088 '80 – '81 Almanac

The centennial calendar or almanac 1880-1881.

18.3h X 12.4w x 0.2thick (cm), 7 1/4h x 4 5/8w x 1/16thick (inches), good condition.



HAFE 10089 Doctor, Journal of Medicine and Therapeutics

Doctor, a quarterly journal of medicine and therapeutics. Peacock chemical co. Peacock chemical company, 113 & 115 locust street, st. Louis, mo, vol. li, no. 4, 32 pages.

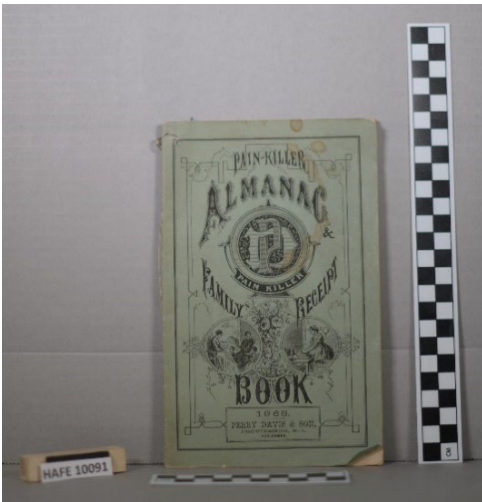
H 20.3 W 13.3 D 0.2 CM



HAFE 10090 1881 Illustrated Almanac, Hostetter and Smith

Hostetter's illustrated united states almanac 1881. Hostetter and smith, Pittsburgh, pa, 1881, 36 pages.

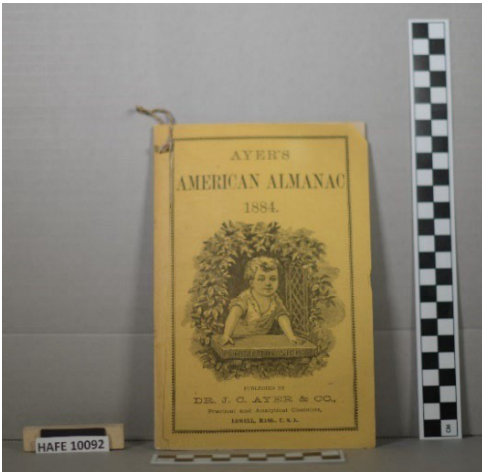
H 20.0 W 13.1 D 0.2 CM



HAFE 10091 Pain Killer Almanac and Receipt Book

Pain killer almanac & receipt book, 1868. Perry Davis and son, Providence, RI, 36 pages.

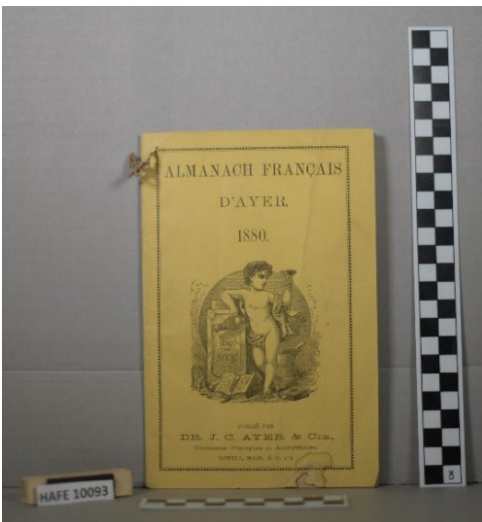
H 19.8 W 12.1 D 0.2 CM



HAFE 10092 Ayer's American Almanac 1884

Ayer's American almanac 1884. 36 pages of text. Small, yellow paper covered, off-white leaves. Front cover printed in black ink.

H 19.3 W 12.7 D 0.2 CM



HAFE 10093 Almanach Francais d'Ayer

Almanach francais d'ayer, 1880 j. C. Ayer and company, Lowell, MA, 36 pages.

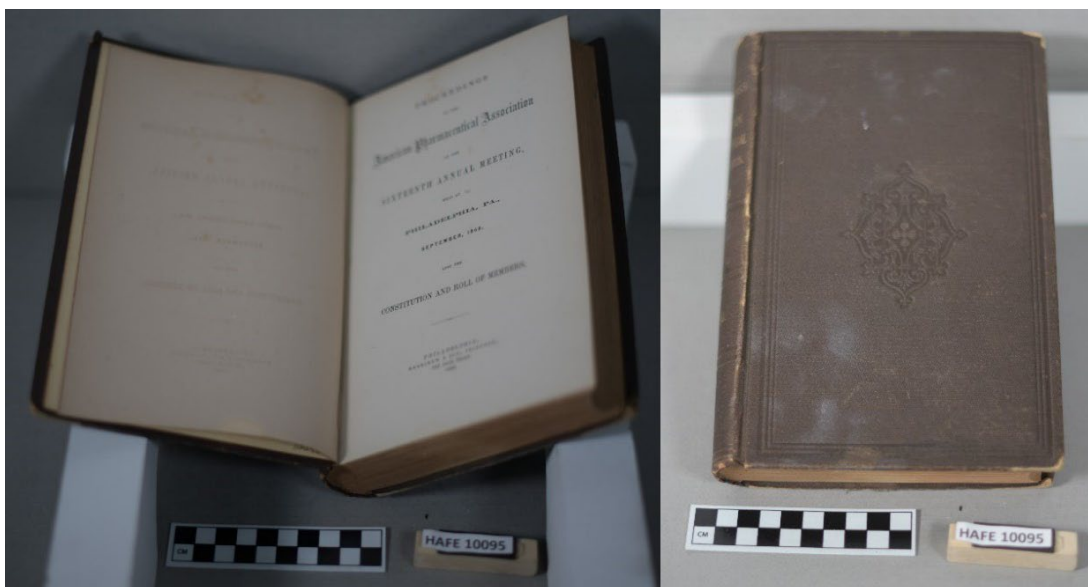
19.7h x 12.7 x 0.2thick (cm), 7 3/4h x 5w x 1/16thick (inches), good condition, tears.



HAFE 10094 Life Secrets Revealed

Life Secrets Revealed, H.H. Warner and company, Rochester, NY, 40 pages.

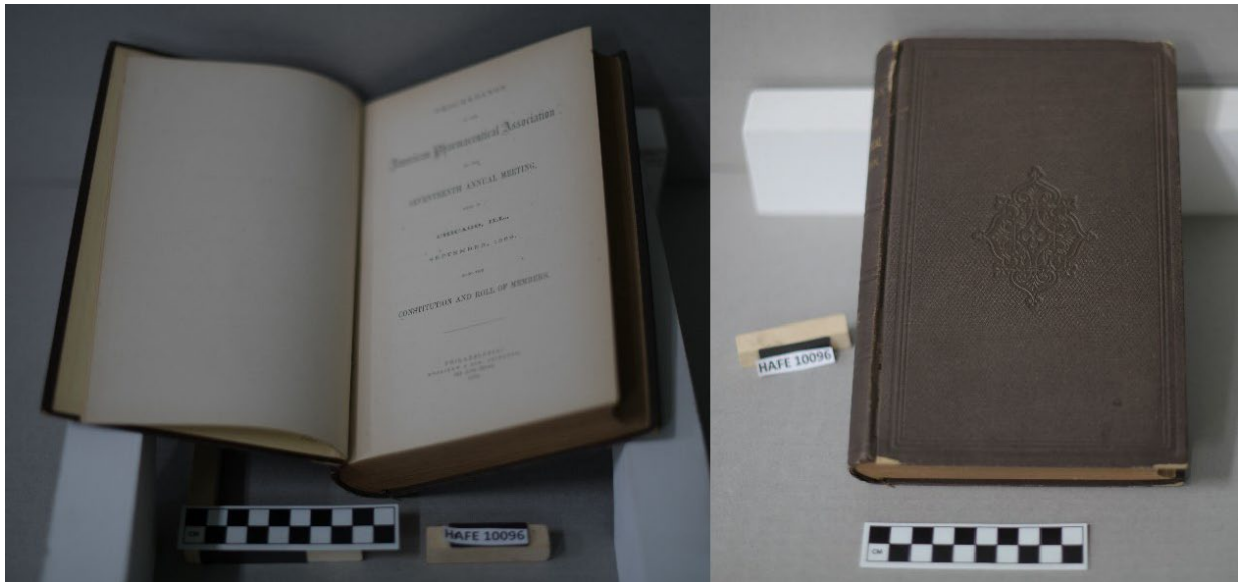
21.0h x 14.3w x 0.2thick (cm), 8 1/4h x 5 5/8w x 1/16thick (inches), incomplete.



HAFE 10095 Proceedings of the American Pharmaceutical Association 1868

Proceedings of the American pharmaceutical association, 1868, Merrihew and Son, 243 arch street, Philadelphia, pa, 1869, vol. 16, 510 pages.

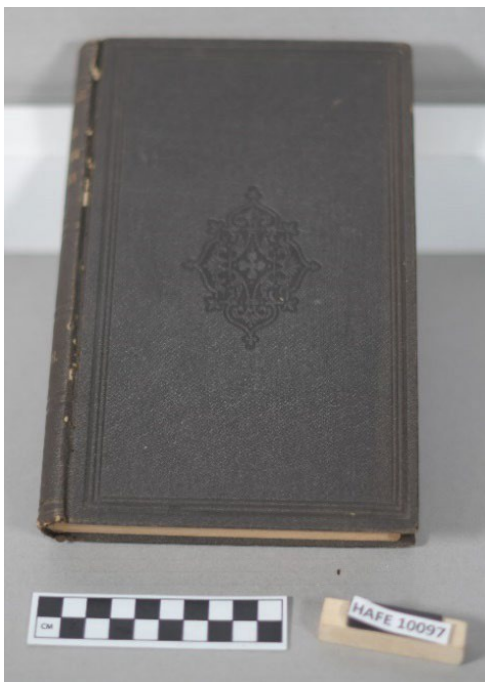
23.2h x 15.9w x 3.8thick (cm), 9 1/8h x 6 1/4w x 1 1/2thick (inches), good condition.



HAFE 10096 Proceedings of the American Pharmaceutical Association 1869

Proceedings of the American Pharmaceutical Association, 1869, Merrihew and Son, 243 arch street, Philadelphia, PA, vol. 17, 476 pages.

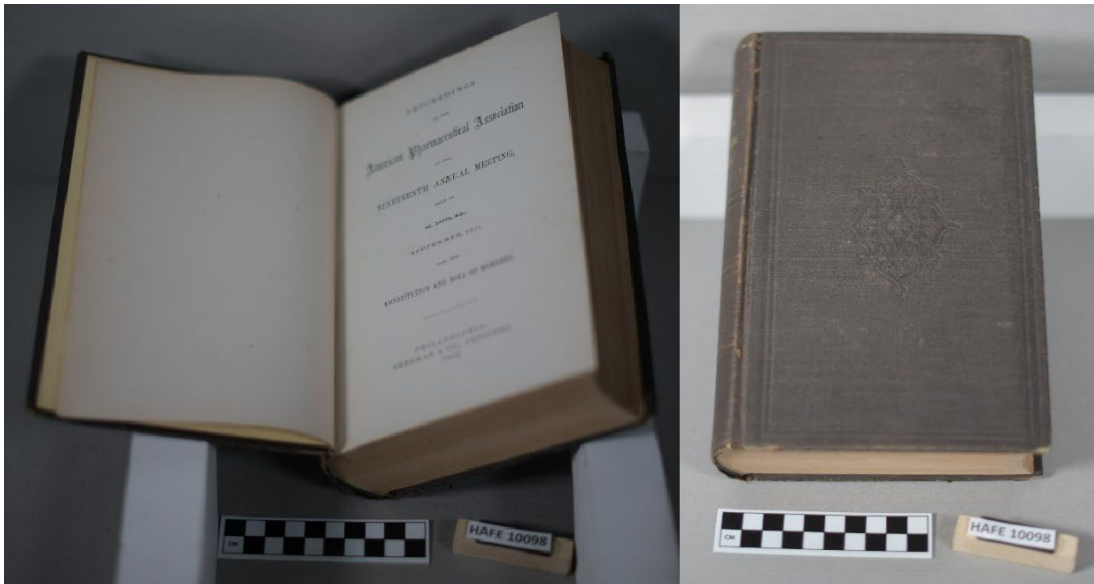
23.4h x 15.9w x 3.5thick (cm), 9 3/16h x 6 1/4w x 1 3/8thick (inches), good condition.



HAFE 10097 Proceedings of the American Pharmaceutical Association 1870

Proceedings of the American Pharmaceutical Association, 1870. Sherman and Company, Philadelphia, PA, 1870, vol. 18, 360 pages.

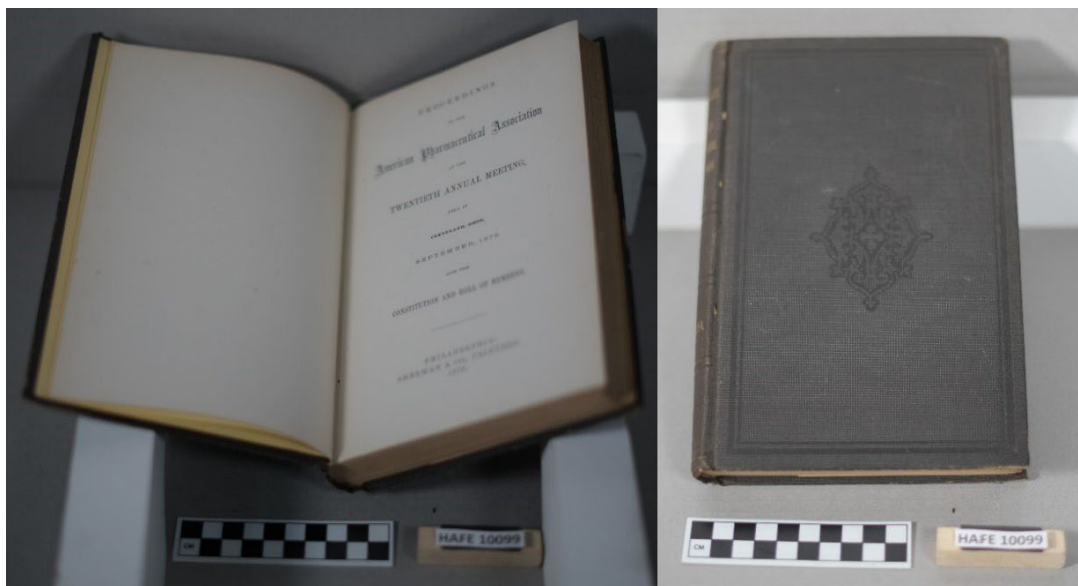
H 23.4 W 15.9 L 2.7 CM



HAFE 10098 Proceedings of the American Pharmaceutical Association 1871

Proceedings of the American Pharmaceutical Association, 1871, Sherman and Company, Philadelphia, PA, 1872, vol. 19, 732 pages.

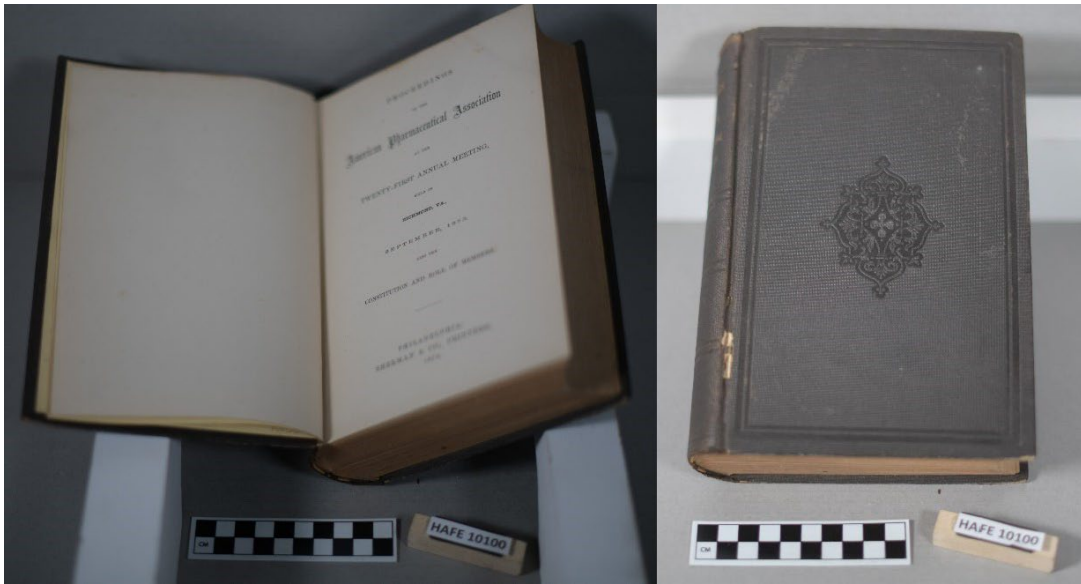
23.5h x 15.6w x 5.4thick (cm), 9 1/4h x 6 1/8w x 2 1/8thick (inches), good condition.



HAFE 10099 Proceedings of the American Pharmaceutical Association, 1872

Proceedings of the American Pharmaceutical Association, 1872, Sherman and Company, Philadelphia, PA, 1873, vol. 20, 373 pages.

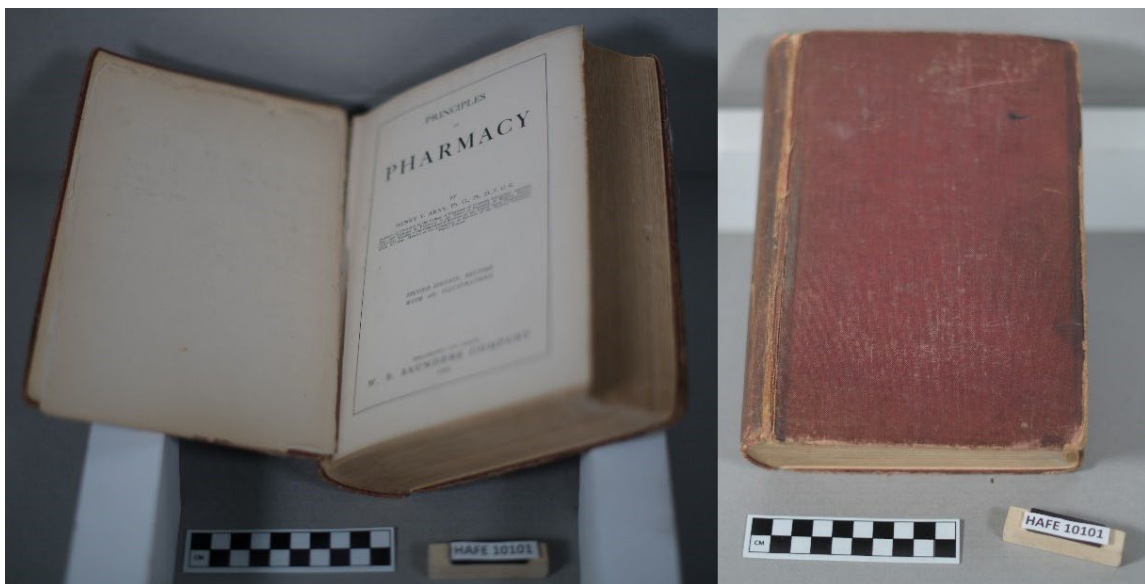
23.5w x 15.6w x 2.8thick (cm), 9 1/4h x 6 1/8w x 1 1/8thick (inches), good condition.



HAFE 10100 Proceedings of the American Pharmaceutical Association, 1873

Proceedings of the American Pharmaceutical Association, 1873, vol. 21, Sherman and Company, printers, Philadelphia, PA, 1874, 710 pages.

23.6h x 15.8w x 5.7thick (cm), 9 1/4h x 6 1/4w x 2 1/4thick (inches), good condition.



HAFE 10101 Principles of Pharmacy

Principles of Pharmacy, Henry v. Arny, W.B. Saunders Company, 1922, 1060 pages.

23.5h x 16.5w x 5.6thick (cm), 9 1/4h x 6 1/2w x 2thick (inches), fair condition.



HAFE 10145 Bottle

Round, clear glass, thick glass mushroom stopper with hollow shank and top mold seams, saltmouth (wide), round shoulders and body, two mold seams from bottom halfway up the neck, recess for label, paper label "Calc phos./parec." and bottom is slightly recessed and embossed "W.T. & co."

H 25.4 W 7.7 CM