

## **Fort Washington Park (FOWA) – Objects Available**

The following objects are outside the unit's scope of collection and are available for transfer to another park or other federal agency, or conveyance to non-federal institutions.

Contact for further information:

Mike Antonioni, Curator  
National Capital Parks-East  
1900 Anacostia Dr., SE  
Washington, D.C. 20020  
[mike\\_antonioni@nps.gov](mailto:mike_antonioni@nps.gov)

### **FOWA 290**

Canon worm, wood stave and double pointed iron worm. No visible marks. For a 24-pound canon. Circa 1861-1865. Dimensions: 322.58 cm. L: 14.78 cm dia.



**FOWA 291**

Cannon sponge. Sponge and stave for 24-pound gun. Wood rammer head covered with brown wool carpeting, stitched at top of head, held at bottom of rammer head by leather washer fastened to head with sixteen copper nails. Circa 1861-1865. Dimensions: 327.34 cm L, 13.34 cm dia.

**FOWA 421 and 422**

Frame and portrait of Lieutenant Colonel Armistead. Color, rectangular. Shows man in early 19<sup>th</sup> century U.S. Army Uniform. Dimensions: 46.8 cm W, 56.8 cm H.



**FOWA 449**

Lithograph with frame. View of Mount Vernon, caption "The Home of Washington."  
Frame has an inner square with gold paint over the plaster and wood outer square has a dark brown stain, both squares have forty-five degree mitered corners. Circa 1862.  
Dimensions: 56.1 cm. W, 48.1 cm H.

**FOWA 450**

Engraving with frame. Portrait of a man, has caption "Millard Fillmore," done by Sartain,  
frame has an inner square with gold paint over plaster and wood, outer square has a brown stain, both squares have forty-five degree mitered corners. It has glass pane.  
Circa 1860. Dimensions: 79.7 cm. H, 60.8 cm W.



**FOWA 451**

Engraving with frame. Portrait of George Washington, copy of signature "G. Washington" on bottom, done by Ritchie Rothermel. Frame has inner square with gold paint over plaster and wood with decorative streaking. Outer square is brown with black on two facets. Both squares have forty-five degree mitered corners. Circa 1860. Dimensions: 86.5 cm. H, 68.7 cm. W.

**FOWA 452**

Mirror, ogee type with frame. Rectangular, silver-plated glass set in pine frame with mahogany veneer, has inner square with gold paint over wood, brown stained outer square, both swaures have forty-five degree mitered corners, has two piece slat back, Circa 1840-1807. Dimensions: 101.2 cm. H, 65.3 cm. W.

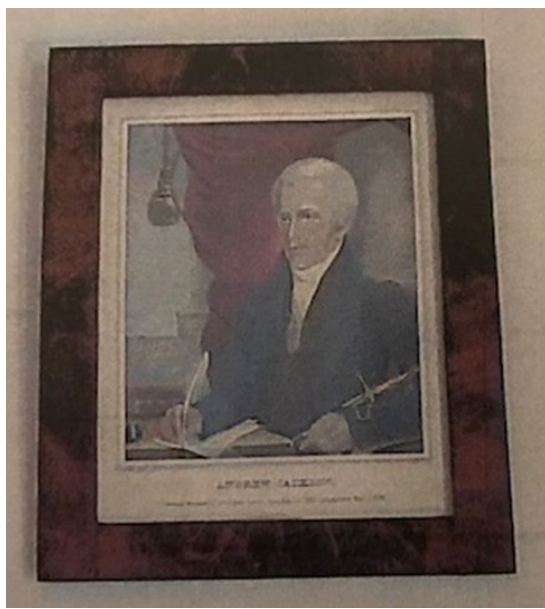


**FOWA 453**

Map with frame. This object is a reproduction. Rectangular, tan with brown lines, photographic copy of an "Extract of Military Map of N.E. Virginia 1865." Frame with glass insert. Has an inner square with gold paint over plaster and wood. Dimensions: 59.8 cm. W, 69.7 cm. H.

**FOWA 455**

Lithograph and frame. Rectangular, caption "Andrew Jackson," by E.C. Kellog, portrait of President Jackson. Frame is mahogany veneer over pine with glass insert. Made of eight pieces with rectangular top and bottom, two sides metered on top and bottom, and four triangular inserts. Brown stain. Circa: 1845-1865. Dimensions: 45.6 cm. H, 38.4 cm. W.



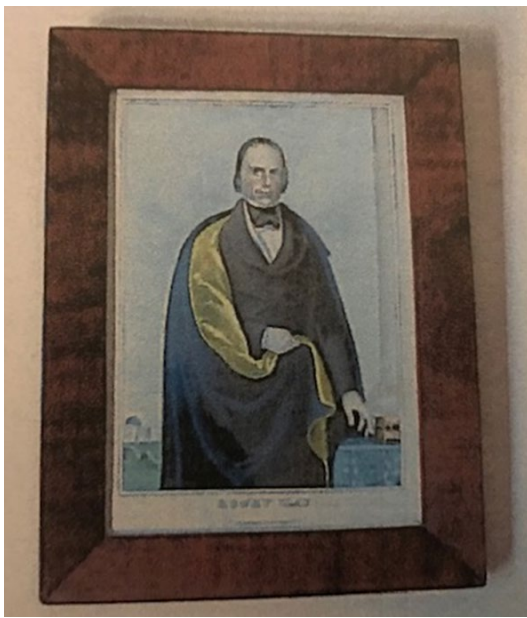


**FOWA 456**

Lithograph and Frame. Rectangular, caption "Gen. Taylor," by Lewis and Brown: Mahogany veneer over pine frame with glass insert and forty-five degree mitered corners, brown stain. Circa: 1844-1849. Dimensions: 41.7 cm. H, 31.8 cm. W.

**FOWA 457**

Lithograph and frame. Rectangular, caption "Henry Clay": mahogany veneer over pine frame, forty-five degree mitered corners, brown stain. Circa: 1838-1847. Dimensions: 43.5 cm. H, 33.3 cm. W.



**FOWA 458**

Lithograph and frame. Rectangular, caption is "Capt. Bragg's Artillery at the Battle of Buena Vista," by R. Magee. Mahogany veneer over pine frame with glass insert, made of rectangular pieces, brown stain. Circa 1847-1856. Dimensions: 43.3 cm. W, 33.3 cm. H.

**FOWA 459**

Lithograph and Frame. Rectangular, caption "Gen. Scott at the taking of Vera Cruz March 22, 23, 24<sup>th</sup> 1847": has mahogany veneer over pine frame with glass insert. Has forty-five degree mitered corners, brown stain. Circa 1847-1856. Dimensions: 41.5 cm. H, 31.4 cm. W.



**FOWA 460**

Lithograph and frame. Rectangular, caption is "Death of Jackson," by J. Baille, Scene of President Jackson and Family: mahogany veneer over pine frame with glass insert, has forty-five degree mitered corners, brown stain. Circa 1845. Dimensions: 43.1 cm. W, 31.9 cm. H.

**FOWA 14279**

29-Pound Coehorn Mortar. Information on the muzzle are as follows: CA & Co. WT. 162 Mfg Date – 1862, Inspector Initials TJR, Barrel Number 17. Circa: 1862. Weight: 162 pounds.

