

Arlington House, The Robert E. Lee Memorial – Objects Available

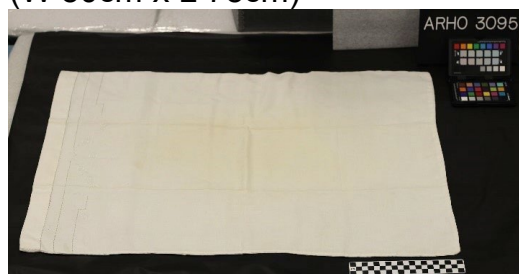
The following objects are outside of the unit's scope of collection and are available for transfer to another park or other federal agency, or conveyance to non-federal institutions.

Contact for further information:

Greg Cox, Museum
Curator
George Washington Memorial
Parkway 700 George Washington
Memorial Parkway McLean, VA
22101
greg_cox@nps.gov

ARHO 3095-3096

Pillowcases; a pair; white, decorated with one row of cut and drawn work 38mm from edge on both sides of pillowcase and 2 rows of cutwork integrated with embroidered floral vine on front. Slight discoloration. (W 50cm x L 75cm)



ARHO 3097

Tablecloth; wheat-colored linen table cover with crocheted edging 50mm wide. Has fitted corners. Holes on corner and stained throughout. (W 80cm x L 72cm)



ARHO 3098

Dresser scarf; linen, cut and drawn work along perimeter 19mm at edge. Horizontal and vertical rows intersect to form small squares at corners. Stained. (W 53cm x L 90cm)



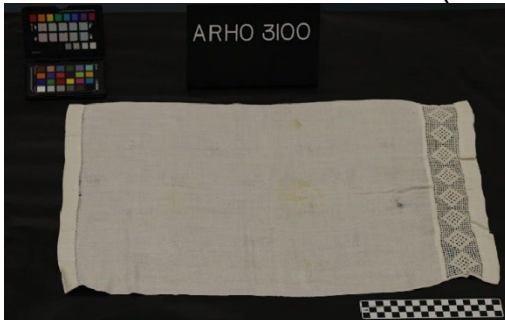
ARHO 3099

Face towel; white, on huck or birdseed ground, striped floral damask pattern, blue and white crocheted open work, in flame pattern 50mm wide at top and 25mm at bottom. (W 63cm x L 90cm)



ARHO 3100

Hand towel; white, huck weave ground with scattered damask leaves. Crocheted open work in diamond pattern 50mm wide and cut work 25mm from top. Worn in one leaf area. Matches face towel (3101). (W 39cm x L 63cm)



ARHO 3101

Face towel; white, huck weave ground with damask floral design. Crocheted open work in diamond pattern 50mm wide, cut and drawn work 25mm from top and 19mm above crocheted work. Small blue stain. (W 55cm x L 83cm)



ARHO 3102

Dresser scarf; white, linen, damask. Large chrysanthemum design encircling plain center. Cut work forms rectangular frame for design, 31mm from edge of scarf. (W 53cm x L 76cm)



ARHO 3103

Dresser scarf, white with cut and drawn work along perimeter 31mm from edge. Horizontal and vertical lines of cut work intersected to form small squares at corners. Small red stain. Matches 3104, 3105. (W 73cm x L 113cm)



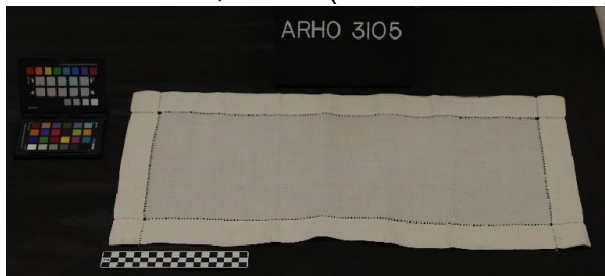
ARHO 3104

Dresser scarf; white with cut and drawn work along perimeter 31mm from edge. Horizontal and vertical rows of cut work intersected to form squares at corners. Late 19th cent. Matches 3103, 3105. (W 47cm x L 90cm)



ARHO 3105

Dresser scarf; white with cut and drawn work along perimeter 31mm from edge. Horizontal and vertical rows of cut work intersect to form squares at corners. Matches 3103, 3104. (W 30cm x L 63cm)



ARHO 3106-3107

Pillowcases; pair of white linen pillowcases with scalloped crocheted edging, initial "T" embroidered on front. Some discoloration, embroidery slightly worn. (W 55cm x L 85cm)

