



## Photograph Analysis Activity



There were very few photographs taken of Andersonville Prison while it was in operation. Photography in the 1860s was a difficult, cumbersome, and expensive process, especially in the rural parts of the South. However, on August 16, 1865, a photographer from Macon, Georgia, named A.J. Riddle visited Andersonville to document the site. When Riddle arrived the prison was at its maximum size, with 33,000 prisoners inside the stockade. He took eight photographs of the prison. These were all taken from the guard “pigeon roosts” that surrounded the stockade. He then took two photographs of the cemetery. For this activity, students will analyze some of Riddle’s photographs in order to gain a better understanding of what conditions were like in Andersonville.

<b>Time:</b>	60 Minutes
<b>Setting:</b>	In the classroom
<b>Suggested Age:</b>	5th-11th Grade
<b>Group Size:</b>	30 Students
<b>Objectives:</b>	At the end of the activity, the students will be able to: <ul style="list-style-type: none"><li>• Students will use historic photographs to draw their own conclusions about the conditions inside Andersonville.</li></ul>

**Materials:** Provided by teacher – photocopies of the photograph handouts and photograph analysis worksheet worksheet included with this lesson plan.

### Applicable Georgia Performance Standards

#### High School (*United States History*)

SSUSH9 The student will identify key events, issues, and individuals relating to the causes, course, and consequences of the Civil War.  
f. Explain the importance of the growing economic disparity between the North and the South through an examination of population, functioning railroads, and industrial output.

#### Middle School (*8th Grade GA Studies*)

SS8H6 The student will analyze the impact of Civil War and Reconstruction on Georgia  
b. State the importance of key events of the Civil War, include Antietam, the Emancipation Proclamation, Gettysburg, Chickamauga, the Union blockade of Georgia’s coast, Sherman’s Atlanta Campaign, Sherman’s March to the Sea, and Andersonville.

#### Elementary School (*5th Grade Social Studies – American History*)

SS5H1 The student will explain the causes, major events, and consequences of the Civil War  
c. Identify major battles and campaigns: Fort Sumter, Gettysburg, the Atlanta Campaign, Sherman’s March to the Sea, and Appomattox Courthouse  
e. Describe the effects of war on the North and South.

This activity corresponds to the Information Processing Skills Matrix as part of the Georgia Performance Standards.

---

## Procedures

1. Distribute copies of the “Photo Analysis Worksheet” or have students copy the sheet onto their own paper. Each student will need one copy of this for each photo that they are assigned.
2. Distribute copies of the photograph handouts.
3. Have the students complete the worksheet for each photograph
4. Follow up questions/discussion topics:
  - a. Ask students about the prisoner’s shelter.
  - b. Discuss the clothing the prisoners are wearing.
  - c. Several of the photos are of the “sinks” (the toilet). Do these look sanitary?
  - d. If you can see people in the photo, what are they doing?

### \*\*\*Differentiation Note

You could do this activity several different ways

1. Have students do this individually.
2. Have students work in groups – with each group assigned one or two of the photos.
3. Expand on the assignment and have students create powerpoint presentations pointing out features of their photo, using the analysis worksheet as a guide.
4. If necessary to save copies or paper you could display the photos on an overhead projector.

Credit for all photographs: NPS/Andersonville National Historic Site

Photograph Analysis Worksheet adapted from original developed by the Education Staff of the National Archives and Records Administration.

---

**Photo Analysis  
Worksheet**

**Observation**

Study the photograph for two minutes. Form an overall impression of the photograph and then examine individual items. Next, divide the photograph into quadrants and study each section to see what new details become visible.

Use the chart below to list people, objects, and activities in the photograph.

<b>People</b>	<b>Objects</b>	<b>Activities</b>

---

**Inference**

Based on what you have observed above, list three things you might infer from this photograph.

---

**Questions**

What questions does this photograph raise in your mind?

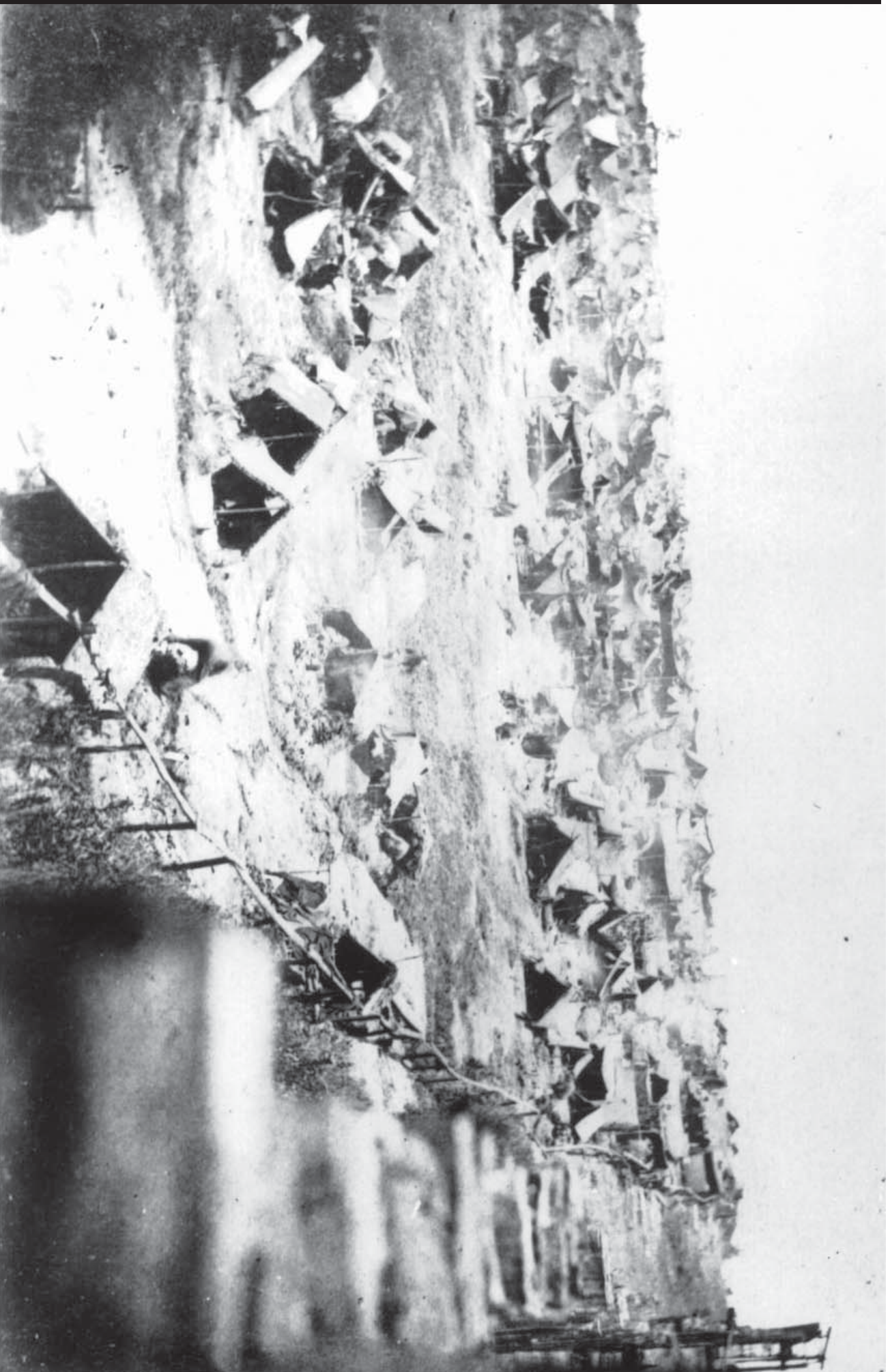
Where could you find answers to those questions?



Photograph #1  
The Burial Trench







Photograph #2  
View from Along the East Wall





Photograph #3  
Distributing Rations





Photograph #4  
The Sinkand and the Creek, Looking Northwest





Photograph #5  
The Sinks, looking Southwest





Photograph #6  
Prison View, Looking Southwest