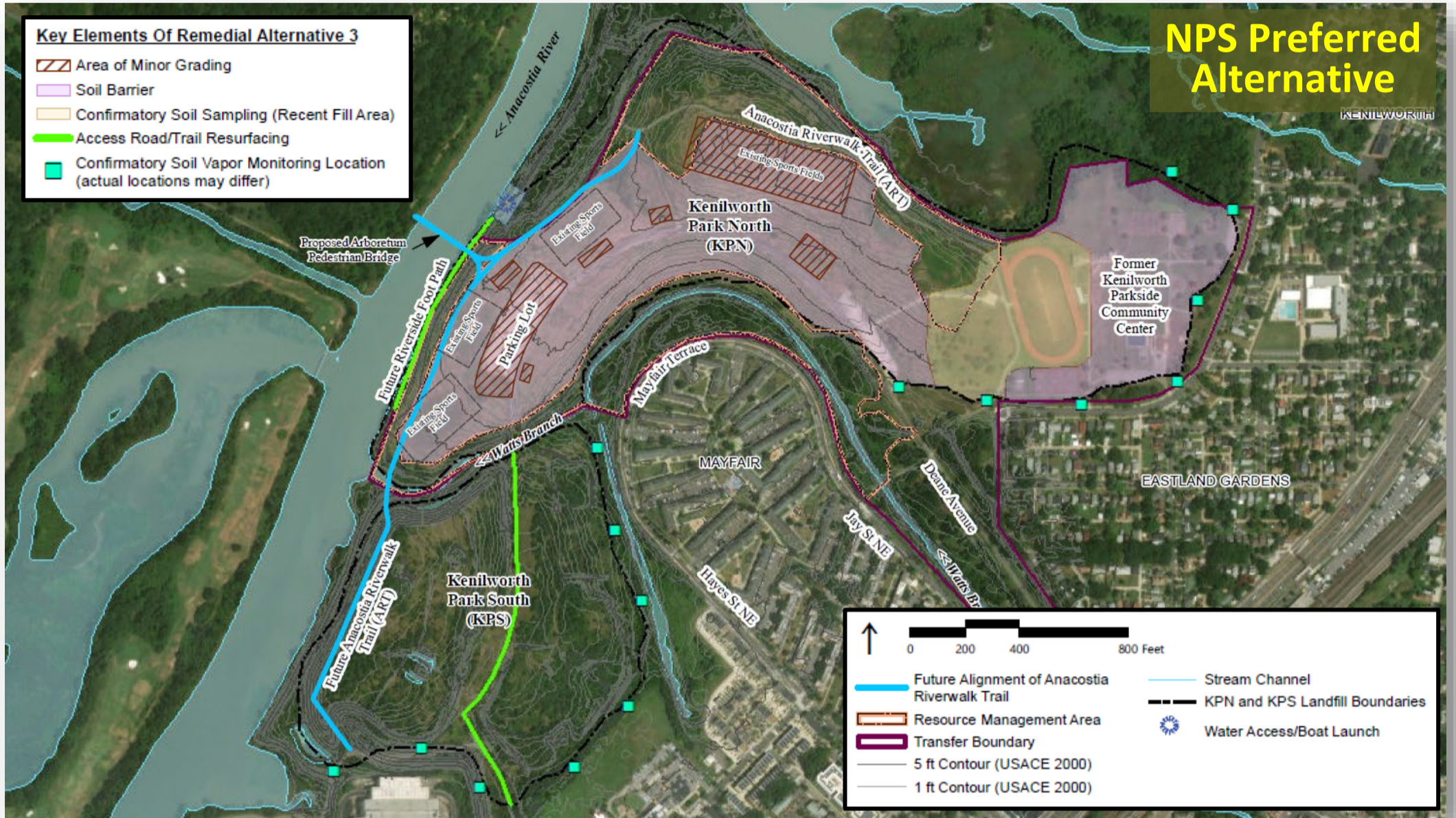




Alternative 3: Selective Placement of Clean Soil Barriers



Key Elements of Alternative:

- Placement of clean soil barriers (1-ft deep) in areas reserved for organized sport/recreation, community activities & special events (~60 acres)
- Resurfacing (paving or gravel) of official trails
- Institutional controls to restrict or manage future activities that might result in health risks to workers (e.g., excavating in the landfill to install utilities)

Estimated Costs:

- Net Present Worth: \$9 million
- Capital Cost: \$7.5 million
- Annual (O&M) and Ongoing Periodic Costs: \$43K to \$118K per year

Feasibility Study Evaluation Summary:

Criteria	Alternative 3
Overall protection of human health & the environment	Protective
Compliance with applicable or relevant & appropriate requirements (ARARs)	Compliant
Long-term effectiveness & permanence	Effective
Reduction of toxicity, mobility, or volume through treatment	Not Applicable
Short-term effectiveness	Effective
Implementability	Implementable
Cost	Cost Effective



Alternative 4: Site-wide Clean Soil Barrier



Key Elements of Alternative:

- Installation of a clean soil barriers across most of Kenilworth Park North and Kenilworth Park South.
- No disturbance of floodway and shoreline areas to reduce Anacostia River and Kenilworth Marsh impacts (e.g., erosion)
- Institutional controls to restrict or manage future activities that might result in health risks (e.g., excavating in the landfill to install utilities)

Estimated Costs:

- Net Present Worth: \$18 million
- Capital Cost: \$15 million
- Annual (O&M) and Ongoing Periodic Costs: \$83K to \$180K per year

Feasibility Study Evaluation Summary:

Criteria	Alternative 3
Overall protection of human health & the environment	Protective
Compliance with applicable or relevant & appropriate requirements (ARARs)	Compliant
Long-term effectiveness & permanence	Effective
Reduction of toxicity, mobility, or volume through treatment	Not Applicable
Short-term effectiveness	Ineffective
Implementability	Implementable
Cost	Cost Effective

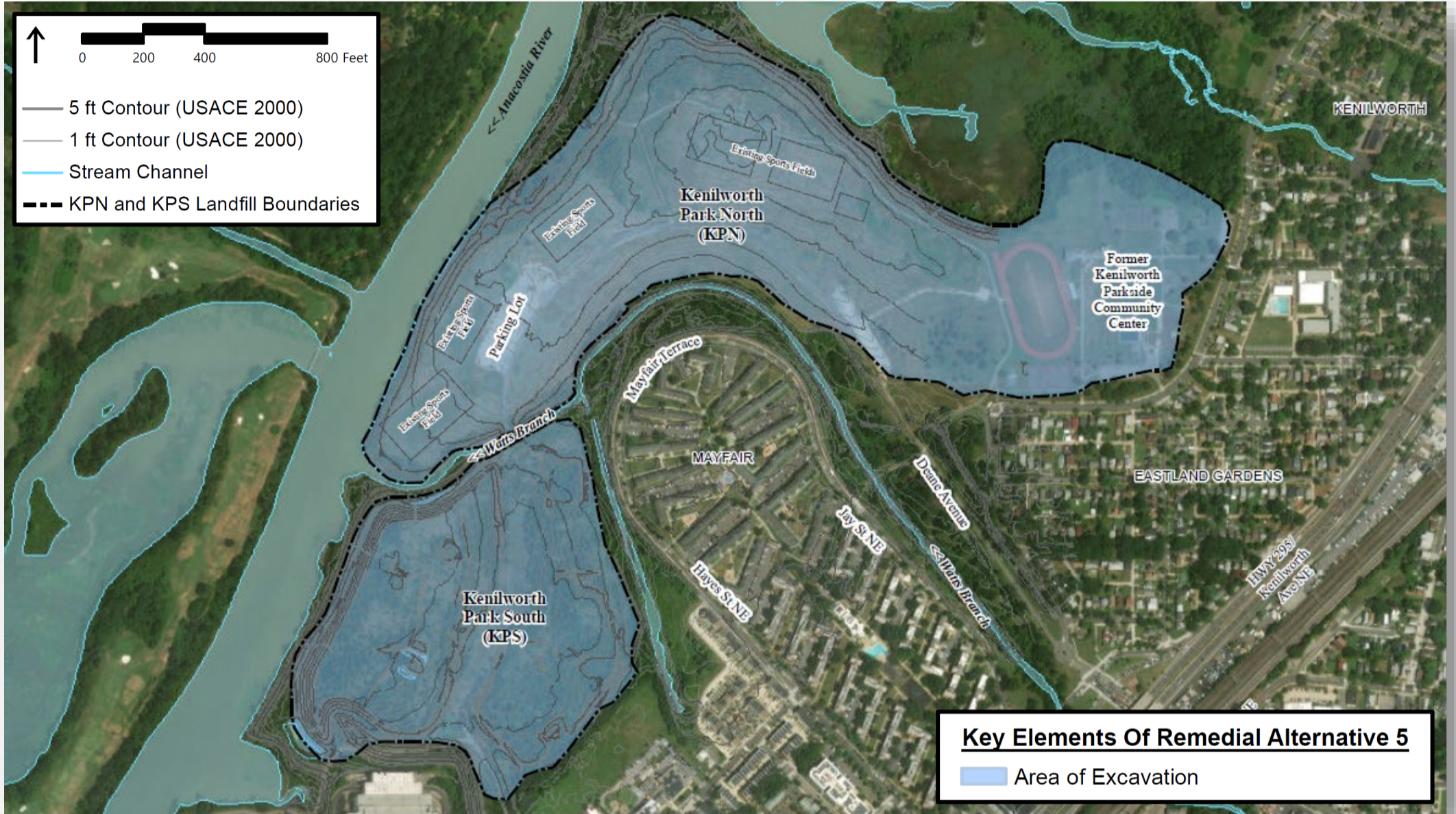
Kenilworth Park

National Park Service
U.S. Department of the Interior



District of Columbia

Alternative 5: Landfill Removal & Shoreline Stabilization



Key Elements of Alternative:

- Removal and off-Site disposal of all waste material and cover soils (~6.5 million tons) to reestablish the grades and wetlands that existed prior to landfill development.
- Approximately 150 acres of wetland restoration and shoreline stabilization to protect the tidal wetland area.
- Remedial activities would render the park unusable until remediation and revegetation is complete.

Estimated Costs:

- Net Present Worth: \$620 million
- Capital Cost: \$610 million
- Annual (O&M) and Ongoing Periodic Costs: \$350K per year (for 5 years)

Feasibility Study Evaluation Summary:

Criteria	Alternative 3
Overall protection of human health & the environment	Protective
Compliance with applicable or relevant & appropriate requirements (ARARs)	Compliant
Long-term effectiveness & permanence	Effective
Reduction of toxicity, mobility, or volume through treatment	Not Applicable
Short-term effectiveness	Ineffective
Implementability	Implementable
Cost	Not Cost Effective