

UNITED STATES DEPARTMENT OF THE INTERIOR

NATIONAL PARK SERVICE

AMISTAD NATIONAL RECREATION AREA

December 8, 2025

Authorized by Title 54 United States Code, Section 100751, and Title 36, Code of Federal Regulations, Parts 1 through 7, the following regulations are established by the Park Superintendent for the proper management, protection, and public use of Amistad National Recreation Area.

These regulations apply in addition to the criminal laws of the United States and the regulations contained in Title 36 of the Code of Federal Regulations. A person convicted of violating a provision of these regulations shall be punished by a fine as provided by law, or by imprisonment as provided by law, or both.

Designations, closures, permit requirements, and other restrictions authorized by the Superintendent under his discretionary authority are printed in regular type.

Written determinations, which explain the reasoning behind the Superintendent's use of discretionary authority, are required by 36 CFR § 1.5(c) and appear in this document as italicized print.

Approved by Brendon Voss, Superintendent (Acting)

Recommended by Harold Kelly, Chief Ranger (Acting)

Table of Contents

§ 1.5 Closures and Public Use Limits	6
(a)(1) Closures.....	6
(a)(2) Use Limits.....	7
§ 1.6 Permits.....	9
2.23 Recreation Fees – Lake Use Fee.....	10
2.50 Special Events – Fishing Tournaments.....	10
§ 2.1 Preservation of Natural, Cultural, and Archeological Resources	10
(a)(2) Introducing wildlife, fish, or plants, including their reproductive bodies, into a park area ecosystem.....	10
(a)(4) Using or possessing wood gathered from within the park	11
(a)(5) Archeological or cultural resources	11
(b) Pedestrian or hiking use.....	11
(c)(1) & (c)(2) Collection for personal use or consumption.....	11
§ 2.2 Wildlife Protection	12
(b) Hunting allowed in designated areas of Amistad National Recreation Area	12
(b)(4) Where hunting or trapping or both are authorized, such activities shall be conducted in accordance with Federal law and the laws of the State within whose exterior boundaries a park area or a portion thereof is located.....	12
(d) Transporting lawfully taken wildlife through the park.....	12
§ 2.3 Fishing	12
(d)(8) Fishing limits.....	12
§ 2.10 Camping and Food Storage	13
(a) Frontcountry Camping.....	13
Frontcountry Camping.....	14
Group Camping	14

Backcountry Camping.....	15
(b)(3) Camping within 100 feet of a flowing stream, river, or body of water, except as designated.....	16
§ 2.11 Picnicking	16
§ 2.13 Fires.....	17
(a)(1) The following are prohibited: Lighting or maintaining a fire, except in designated areas or receptacles and under conditions that may be established by the superintendent.....	17
(b) Conditions for extinguishing	18
(c) Closures to fire.....	18
§ 2.14 Sanitation and Refuse	18
(a)(7) Disposing of fish remains as designated	18
(a)(9) Non-developed area disposal of human body waste as designated.....	18
(b) Conditions concerning the disposal, containerization, or carryout of human body waste.....	19
§ 2.15 Pets.....	19
(a)(3) Unattended and tied pets.....	19
(a)(5) Pet excrement disposal conditions	20
(b) Hunting dogs	20
§ 2.16 Horses and Pack Animals.....	20
(a) Pack animals defined.....	20
(b) Areas designated for use of horses or pack animals	20
§ 2.21 Smoking	21
§ 2.22 Property.....	21
(a)(2) Unattended property designations and conditions.....	21
Mooring private vessels.....	21
Vehicles and boat trailers	22

Deer hunting stands	22
Temporary mooring or jugs	22
§ 2.23 Recreation Fees	23
(a) Recreation fees shall be established as provided for in part 71 of this chapter.	23
§ 2.35 Alcoholic Beverages and Controlled Substances	23
(3)(i) Alcoholic beverage closures	23
§ 2.51 Demonstrations	23
(c)(2) Designated available park areas	23
§ 2.62 Memorialization	24
(b) Scattering of human ashes	24
§ 3.2 Do other boating laws and regulations apply to me when I operate my boat on park waters?	24
(b)(a) Vessels and their operation on all waters subject to NPS jurisdiction are governed by non-conflicting boating safety laws and regulations of the State within whose interior boundaries a park area or portion thereof is located.	24
§ 3.3 Am I required to obtain a permit to operate a vessel in a park area?	24
§ 3.4 For what purposes may my vessel be inspected?	25
(a) An authorized person may at any time stop and/or board a vessel to examine documents, licenses, or permits relating to operation of the vessel and to inspect the vessel to determine compliance with regulations pertaining to safety equipment, vessel capacity, marine sanitation devices, and other pollution and noise abatement requirements	25
§ 3.8 Vessel Operations Which Are Prohibited	25
(a)(2) Designated launch ramps	26
(b)(3) Designated flat wake speed areas	27
§ 3.12 Water Skiing or Other Similar Activities	27
(a) The towing of a person by a vessel is allowed only in designated waters	27
§ 3.16 Swimming and Wading	28

§ 3.18 Snorkeling or Underwater Diving.....	28
(a) Snorkeling and underwater diving closures and restrictions.....	28
§4.2 State Law Applicable.....	29
(a) Unless specifically addressed by regulations in this chapter, traffic and the use of vehicles within a park area are governed by State law. State law that is now or may later be in effect is adopted and made a part of the regulations in this part.....	29
§ 4.10 Travel on Park Roads and Designated Routes(a) Operating a motor vehicle is prohibited except on park roads, in parking areas and on routes and areas designated for off-road motor vehicle use.....	29
§ 4.11 Load, Weight, and Size Limits.....	30
(a) Vehicle load, weight and size limits established by State law apply to a vehicle operated on a park road. However, the superintendent may designate more restrictive limits when appropriate for traffic safety or protection of the road surface. The superintendent may require a permit and establish conditions for the operation of a vehicle exceeding designated limits.....	30
§ 4.21 Speed Limits.....	30
(b) Designated speed limits	30
§ 4.30 Bicycles (including e-bikes)	31
Park Roads	31
Designated Bicycle Areas.....	31
(i) E-Bike policy	32
§ 5.5 Filming and Still Photography.....	33
§7.79 Special Regulations – Amistad National Recreation Area.....	34
(a)(1) Hunting times and locations designated.....	34
(a)(2) Hunting season and species allowed.....	34
Conditions of hunting permit (reference 36 CRF §1.6).....	35

§ 1.5 Closures and Public Use Limits

(a)(1) Closures

The following areas are closed to all public use due to the presence of sensitive resources:

- Seminole Canyon starting 0.5 miles up-canyon of the confluence with the Rio Grande and marked with buoys.

The following areas are closed to all public use to maintain integrity and security of government emergency response vessels:

- Government Cove at Diablo East to include the shoreline to the top of the canyon rim/property line, the water, and government docks. The area is marked with buoys and signs.

The following areas are also closed to all public use:

- All terrestrial cave and karst features, with exception of Panther Cave, Parida Cave, and Pink Cave.

All terrestrial cave and karst features within the park are closed to public use to protect the resource until such time as a Cave and Karst Management Plan is developed and implemented, with the noted exceptions. For the purpose of this restriction, cave and karst features include true caves, sinkholes, pits, fissures, overhangs, and rock shelters.

- Interior Least Tern nesting colony sites.

Interior Least Terns are protected under the Migratory Bird Treaty Act; they nest on islands and peninsulas on the lake from approximately May 1st through August 31st. To avoid disturbing their nesting activity, these areas will be closed to all public use during their nesting season. The areas will be marked with signs on the shoreline.

- The Lower Rio Grande area below Amistad Dam unless escorted by a park employee conducting official government business.

This area is closed to general public access because of safety and homeland security concerns.

- The water area extending 350 feet out from the entire portion of Amistad Dam, which includes both the concrete and earthen wing dams.

International Boundary and Water Commission has closed this area for safety concerns and for homeland security concerns.

- All administrative service roads and areas marked with a sign.
- All boat ramps, fishing docks, or other facilities may be closed to the public due to low water, hazardous conditions, or maintenance.
- Launching, landing, or operating an unmanned aircraft from or on lands and waters administered by the National Park Service within the boundaries of Amistad National Recreation Area is prohibited except as approved in writing by the Superintendent. The term “unmanned aircraft” means a device that is used or intended to be used for flight in the air without the possibility of direct human intervention from within or on the device, and the associated operational elements and components that are required for the pilot or system operator in command to operate or control the device (such as cameras, sensors, communication links). This term includes all types of devices that meet this definition (e.g., model airplanes, quadcopters, drones) that are used for any purpose, including for recreation or commerce.

Closures will maintain integrity and security of government property.

(a)(2) Use Limits

The entire park is closed to the possession of glass beverage containers.

The high occurrence of broken glass that has caused injuries to visitors indicates a need for this prohibition.

The following areas are closed to the beaching of vessels:

- Vessels may not be beached overnight within designated harbors at Diablo East, Rough Canyon, Southwinds Marina, and Box Canyon.

This regulation is intended to reduce the congestion in high visitor use areas.

- Kitesurfing, kiteboarding, hang gliding, and parasailing (board riding while attached to wind-driven, parachute-like objects or wing devices and/or towed by a vessel or vehicle) is only allowed by permit issued by the Superintendent. This closure does not include sailboarding, where a sail is permanently affixed to the board. Wingboarding is allowed. Wingboarding or sailboarding is where a wing is directly affixed to the board or rider. There are no lines attached to the board or rider.

Kitesurfing/boarding, hang gliding, and parasailing within Amistad National Recreation Area has been deemed an inappropriate activity given safety concerns and resource conflicts that the park is mandated to prevent. Accepted safety practices by kitesurfing/boarding and parasailing associations and groups advocate no kiteboard or parasailing use in swim areas and avoidance of obstacles, which abound at Amistad National Recreation Area.

The following areas are closed to the use of water jet devices (WJD), such as but not limited to Jetpaks™, Jetlevs™, Flyboards™, and other similar devices, where individuals ride a hydro-powered apparatus above the surface of the water while connected to a personal watercraft (PWC) or other power source that supplies thrust to the WJD through a hose connecting the two devices:

- Within any area marked as “no wake,” “no boats,” “boats keep out,” or designated as closed to public use.
- Within the harbors at Diablo East, Rough Canyon, and Southwinds Marina.
- Within the Scuba Cove.
- Within 100 feet of any other vessel, structure, boat ramp, or person in or on the water or land while airborne.

These areas are closed to WJD devices for the safety of the WJD users and other park visitors, as well as to reduce injuries between user groups, particularly in high-use areas.

Fueling of vessels while on the lake’s water is prohibited with the following exceptions:

- At the approved fueling facilities at Southwinds Marina.
- From DOT-approved, portable fuel containers, 5 gallons or less in size.
- By a park permit.

Diesel fueling of vessels on the water is allowed from a DOT-approved, commercial fueling apparatus. This prohibition is to prevent pollution of the lake’s water from an accidental discharge of fuel into the lake and to prevent injury to visitors due to improper fueling. Diesel fuel is currently not available from an approved fueling facility on the lake, therefore the park will allow this fueling until an approved fueling station is available.

- The boat slips at Southwinds Marina are restricted to the use of and access by marina and park employees, customers, and their guests. These boat slips are not open to the general public.

These areas are restricted to prevent theft of services and inconvenience to or conflict with slip renters.

- Fishing from the public fishing docks will be restricted to rod and reel fishing or the active use of cast nets. The public fishing docks are not to be used as anchor points for drop lines, trot lines, or any other type of fixed lines. Public fishing docks are located at the Governors Landing Campground, Rough Canyon Campground, and Black Brush Big Loop.

Fixed lines may obstruct the free use and enjoyment of the area by other users.

- All designated fishing docks are closed to vessels.

These docks are provided for the convenience of the non-boating, fishing public.

- Tying or mooring a vessel at public docks for longer than 20 minutes is prohibited.

Time limits are necessary to allow for as many visitors as possible to have access to these convenience facilities.

- The following areas are closed to scuba diving: designated boat mooring, docking, and harbor areas.

This restriction is intended to help ensure diver safety from boat traffic.

- The longer, western courtesy dock at the Diablo East boat ramp is closed to all houseboats.

Houseboats and privately moored houseboats are restricted to the use of the shorter, eastern dock provided specifically for them to reduce congestion at the public dock.

- Tying or mooring of a vessel at Panther or Parida Cave docks for longer than 2 hours is prohibited. These docks are closed from 30 minutes after sunset to 30 minutes prior to sunrise.

Time limits are necessary to allow as many visitors as possible to have access to these facilities, to protect the docks from damage, and to deter long-term mooring in a culturally sensitive area.

- The area known as the Scuba Cove is closed to all motorboat traffic. The area within the northeast and northwest fingers of land at the entrance of the cove to the shore and marked by buoys shall be off limits to boaters.

This area is reserved for scuba divers, who can surface unexpectedly, causing a catastrophic event with a motorboat.

§ 1.6 Permits

Pursuant to 36 CFR 1.6 (f), the following is a list of activities and applicable 36 CFR statutes for which a permit may be required. Permits are issued by the Superintendent and may be subject to special regulations. Engaging in these activities without a permit or violating the terms and conditions of a permit is prohibited:

- 1.5 Public Use Limit (boat ramp parking)
- 2.2 Wildlife protection (hunting in designated areas)
- 2.5 Research specimens

- 2.10 Camping (in designated campgrounds and designated dispersed camping areas)
- 2.11 Picnicking (in designated group picnic areas)
- 2.17 Aircraft and air delivery
- 2.23 Recreation Fees (lake use fee)
- 2.38 Explosives (permit not available)
- 2.50 Special Events
- 2.51 Demonstrations and designated available park areas
- 2.52 Sale of printed matter and the distribution of printed matter and other message-bearing items.
- 2.60 Livestock Use and Agriculture (permit not available)
- 3.3 Am I required to obtain a permit to operate a vessel in a park area?
- 5.1 Advertisements
- 5.3 Commercial and private operations
- 5.5 Filming, Still Photography, and Audio Recording.
- 5.6 Commercial Vehicles
- 5.7 Construction of Buildings or Other Facilities
- 5.10 Eating, Drinking, or Lodging Establishments

2.23 Recreation Fees – Lake Use Fee

All motorboats and sailboats over 14 feet on Amistad Lake that require state registration, including those in fishing tournaments, must possess a valid Lake Use Pass. Lake use fees are \$4.00 per day, \$10.00 for 3 days, or \$50.00 per year.

2.50 Special Events – Fishing Tournaments

A Special Use Permit is required when any fishing tournament exceeds ten (10) boats. The application for Special Use Permits must be received by the park no earlier than 12 months in advance of the tournament start date.

§ 2.1 Preservation of Natural, Cultural, and Archeological Resources

(a)(2) Introducing wildlife, fish, or plants, including their reproductive bodies, into a park area ecosystem

Introducing non-native species is prohibited, e.g., zebra and quagga mussels, Asian carp, and alligators.

(a)(4) Using or possessing wood gathered from within the park

The gathering of dead and downed wood within the park for the purpose of campfires within the park is allowed.

The limited collection of firewood is a traditional use in this region and causes no significant detrimental effects to the resources.

(a)(5) Archeological or cultural resources

The following archeological sites are open to the public with the following restrictions:

- Panther Cave (41VV83) located in Seminole Canyon. No camping or ground fires permitted. Overnight mooring by boats is prohibited.
- Parida Cave (41VV187) located on the Rio Grande. No camping or ground fires permitted. Overnight mooring by boats is prohibited.

These sites are generally known to the public and are open to them (with the identified restrictions) as they possess characteristics that allow for such use without damage.

(b) Pedestrian or hiking use

At Panther and Parida Caves, pedestrian traffic is restricted to the designated trail systems.

This is to protect and preserve sensitive cultural resources while still allowing general access to these sites.

(c)(1) & (c)(2) Collection for personal use or consumption

The following renewable plant products may be collected for personal use only:

- Fruit of the prickly pear cactus.
- Fruit of the agarita bush.
- Fruit of the wild persimmon tree.
- Mesquite beans.
- Hackberry fruit.

There is a limit of one five-gallon container per plant species per family unit during the entire fruit bearing season.

The gathering or consumption will not adversely affect park wildlife, the reproductive potential of a plant species, or otherwise adversely affect park resources. A limit is established to prevent the over-harvesting of the renewable resources and to allow for a wider distribution to the public.

§ 2.2 Wildlife Protection

(b) Hunting allowed in designated areas of Amistad National Recreation Area

(b)(4) Where hunting or trapping or both are authorized, such activities shall be conducted in accordance with Federal law and the laws of the State within whose exterior boundaries a park area or a portion thereof is located.

Non-conflicting State laws are adopted as a part of these regulations.

(d) Transporting lawfully taken wildlife through the park

Wildlife lawfully killed may be transported in the park with the following conditions:

- The wildlife must be tagged as prescribed by state law.

§ 2.3 Fishing

(d)(8) Fishing limits

The following areas are closed to fishing. This includes fishing from vessels secured in marina boat slips, on docks, and on marina mooring buoys:

- Diablo East Harbor within the “no wake” buoys.
- Diablo East Marina.
- Southwinds Marina Cove within “no wake” buoys.

- Rough Canyon Harbor at the low-water boat ramp within the “no wake” buoys, except for the designated fishing dock.
- Rough Canyon at the high-water boat ramp within the “no wake” buoys, except for the designated fishing dock.
- Box Canyon within 200 feet of the boat ramp.
- Black Brush Point boat ramp and courtesy dock.
- 277 North launch and courtesy dock.
- The Scuba Cove within the “Scuba Dive Area” buoys.

These restrictions are necessary to reduce conflicting visitor uses in high traffic areas and to enhance safety for maintenance diving operations.

Anyone 18 years or older must have a current Texas fishing license on their person to be considered legally fishing in the state of Texas and at Amistad National Recreation Area.

§ 2.10 Camping and Food Storage

(a) Frontcountry Camping

Frontcountry camping is allowed only in designated campgrounds. Campgrounds are designated by NPS signage, in brochures, and on maps available to the public at the Visitor Center and online. The designated campgrounds are:

- San Pedro Campground.
- Governors Landing Campground.
- Spur 406 Campground.
- 277 North Campground.
- Rough Canyon Campground and dirt road below the campground.

A Recreation Fee Permit is required for overnight stays in these developed area campgrounds and will be issued by a self-registration system. The campsites are available on a first-come, first-served basis. Reserving or holding these campsites is prohibited. The permit application requirement will be met by paying the required fee at one of the park’s automated fee machines or the park’s Visitor Center and maintaining the fee receipt in the campsite within 30 minutes of arrival in the campground.

Frontcountry Camping

The following conditions apply to frontcountry campgrounds:

- Only one recreational vehicle camping unit, not to exceed three vehicles total, will be allowed per campsite. Vehicles must be parked on pavement or designated areas. In no case shall the number of vehicles exceed the designated parking area capacity.
- Visitors are welcome to stay in the park up to 14 consecutive nights in either a frontcountry or backcountry site, with a limit of 60 total nights in the park in a calendar year.
- Campers can occupy a specific site up to 14 total nights in a year.
- Total campers per campsite are not to exceed eight persons.
- Check-out time is 11:00 a.m.
- Quiet hours in the campgrounds and dispersed camping areas will be from 10:00 pm until 6:00 a.m.
- Campsites must be actively occupied as demonstrated by at least one individual spending the night in the site.

Occupancy requirements are necessary to reduce the usage of campsites as inexpensive storage facilities and to reduce the “saving” of sites for upcoming weekends that keeps others from using the empty sites during that time.

- Camp in designated sites or areas only.
- Target practice is prohibited in all areas of Amistad National Recreation Area.

Group Camping

Frontcountry group camping will be permitted at the following group campgrounds. Reservations shall be made online at [Recreation.gov](https://www.recreation.gov) no more than 180 days in advance:

- Rock Quarry Group Campground – overnight group size is a maximum of 35 persons.
- San Pedro Group Campground – overnight group size is a maximum of 75 persons.
- 277 North Group Campground – overnight group size is a maximum of 35 persons.
- No target practice within campground for visitor safety.

The following conditions apply to group campsites:

- Check-out time is 11:00 a.m.
- Quiet hours are from 10:00 p.m. until 6:00 a.m.
- An individual cannot rent a group campsite for more than 14 days. An individual can only reserve the same group campsite twice within the same calendar year. This limit will be excepted if the group campsite has not been reserved by others 24 hours prior to the desired date.
- There is a high demand for some of the group campsites. These limits are designed to allow as many different people as possible to enjoy these sites.

Backcountry Camping

Backcountry camping is permitted on the lake waters and shoreline under the following conditions:

- Camping will be limited to a maximum of 28 days within a calendar year.
- The possession, use, and removal after use of a portable camp toilet or dry-chemical, bag system for human waste is required.

The following areas are closed to backcountry camping:

- Within one quarter ($\frac{1}{4}$) mile of developed areas.
- Hunt areas during the hunting season.
- Indian Springs Canyon, on the east side of the Devils River, during periods of low water, and in the area beyond the posted signs that read "No Camping Beyond this Point."
- Within 100 feet of where Indian Springs flows down to the Devils River.
- All areas accessible by wheeled motor vehicles, except for designated Dispersed Camping Areas.

- All archeological sites.

DEFINITION: For purposes of the Compendium only, “Developed Areas” in Amistad National Recreation Area include areas within ¼ mile of campgrounds, dispersed camping areas, picnic areas, launch ramps, or public roads. The entire south shoreline from Amistad Dam eastward to the 277 North Highway bridge, with the exception of Hunt Area 5 during the non-hunting season, is also considered a developed area.

Backcountry camping in these areas would not be consistent with their primary designated use and/or may be detrimental to sensitive natural resources.

(b)(3) Camping within 100 feet of a flowing stream, river, or body of water, except as designated

Camping within 100 feet of a flowing stream, river, or body of water other than a spring is allowed.

In some areas of the park the geological features are not conducive to camping farther than 100 feet from the lake and impacts to resources would be minimal.

§ 2.11 Picnicking

Picnicking within the Governors Landing Campground is allowed from 7:00 a.m. until 3:00 p.m., then the individual(s) must either vacate the campsite or pay the camping fee.

Overnight camping is the primary use for designated campgrounds; however, picnicking is permitted in these areas provided it does not interfere with camping. The popularity of the Governors Landing Campground requires this additional restriction to ensure campsites are available for campers.

Picnicking in the group picnic shelters located at Rough Canyon and within the San Pedro Campground is allowed. These shelters are available on a first-come, first-served basis.

§ 2.13 Fires

(a)(1) The following are prohibited: Lighting or maintaining a fire, except in designated areas or receptacles and under conditions that may be established by the superintendent.

A fire may be ignited and maintained only by using fuel sources designed and commonly used for warmth or the preparation of food, such as charcoal briquettes or natural firewood. Lighting or maintaining a fire with other materials including, but not limited to, flammable liquids, garbage, fireworks, plastics, aerosol canisters, batteries, or other manufactured or synthetic materials, is prohibited.

This action is necessary for the maintenance of public health and safety, protection of environmental or scenic values, protection of natural or cultural resources, and the implementation of management responsibilities. Materials other than approved combustibles – especially fire accelerants and substances prone to wind transport or explosion – creates serious risks when used to light or maintain fires. These combustibles can ignite or spread wildfires that directly threaten people and valuable resources and assets. The burning of manufactured or synthetic materials can contribute to air pollution, contaminate soil and water, and be toxic to humans and the environment. Less restrictive measures, such as an education campaign informing visitors of the risks of using certain materials to light or maintain a fire, would not be commensurate with the substantial risks associated with those activities and could lead to adverse outcomes that might be prevented by establishing an enforceable condition.

Open fires are prohibited in the park, except for:

- In developed areas – designated fire grills, portable stoves or grills, designated metal fire rings, or other containers with sides at least 2 inches high that keep the fire out of direct contact with the ground. Use of rock fire rings or other groundfires is prohibited.
- In non-developed areas – portable stoves or grills or contained in fire pans with sides at least 2 inches high. Use of rock fire rings or other groundfires is prohibited.

The following conditions apply to authorized fires:

- Wood or charcoal fires must be contained in fire pans at least 2 inches high or in NPS-provided metal fire rings. Use of rock fire rings or other groundfires is prohibited.
- Fires are prohibited in archeological sites.
- Fires must be constantly attended and are to be completely extinguished prior to departing the area.

Restrictions are necessary to limit the proliferation of fire rings and reduce fire danger in high visitor use areas. Prohibiting ground fires in archeological sites is needed to protect these sites from damage.

(b) Conditions for extinguishing

When unattended, open fires must be completely extinguished and made cold with no remaining burning material left. All trash within fire rings must be removed and properly disposed. Care must be exercised to ensure that ashes are dead out to prevent the spread of hot ashes, which may ignite a wildfire.

(c) Closures to fire

Amistad National Recreation Area will adopt Val Verde County burn bans. These often include prohibitions of ground fires during times of dangerous fire conditions.

§ 2.14 Sanitation and Refuse

(a)(7) Disposing of fish remains as designated

Disposing of fish remains at the designated fish cleaning stations is authorized.

These areas were specifically constructed to properly dispose of fish remains.

(a)(9) Non-developed area disposal of human body waste as designated

Disposal of human body waste within 100 feet of a water source, high-water mark of a body of water, or a campsite is prohibited.

The concentration of campers to the same desirable camp locations creates an unsanitary environment and resource damage with human waste.

(b) Conditions concerning the disposal, containerization, or carryout of human body waste

The Recreational Vehicle (RV) dump station located at Diablo East is specifically for the paying campers of Amistad National Recreation Area. Anyone, who is not a paying camper, using the dump station will be cited in violation of 36 Code of Federal Regulations (CFR) 1.7 Public Notice and 2.14(b)

- Human body waste shall not be discharged or disposed of into any water source.
- In non-developed areas, human waste will be carried out or disposed of on land at least 100 feet from the water's edge and outside of archeological sites and buried at least 6 inches deep.
- All backcountry campers will carry out their solid human waste with a dump station compatible waste system or commercially produced dry chemical bag system. Only properly sealed dry chemical bags may be disposed of in park refuse containers.
- The construction of any type of toilet structure is prohibited, however the setup of a commercially manufactured temporary toilet structure is allowed as long as the body waste is disposed of in accordance with applicable rules, regulations, and laws of all government entities having jurisdiction.
- Toilet structures must be removed when the site is vacated.

Human body waste in a water source is a public health hazard. Burying solid, human body waste on land is required to reduce health hazards, visual pollution, and odors and to speed the decomposition process.

§ 2.15 Pets

(a)(3) Unattended and tied pets

Leaving a pet unattended and tied to an object in a humane manner (with adequate food, water, and shelter) is allowed within campsites for up to 4 hours provided the pet does not make unreasonable noise.

This allowance is preferable to leaving a pet in a hot vehicle or running loose.

(a)(5) Pet excrement disposal conditions

In all developed areas (campgrounds, picnic areas, marinas, parking lots, hiking trails, etc.), pet excrement must be disposed of by the pet owner, either in the nearest trash receptacle or by complete removal.

This regulation is intended to keep objectionable odors and excrement out of high visitor use areas.

(b) Hunting dogs

Bird dogs are allowed to hunt or retrieve dove, quail, or waterfowl or retrieve training devices in designated hunt areas. All dogs must be on a leash outside of the hunt areas, and bird dogs must be under control at all times while in the hunting areas.

This restriction is intended to allow traditional hunting practices in accordance with Texas State law while protecting other wildlife in the park.

§ 2.16 Horses and Pack Animals

(a) Pack animals defined

Only horses, mules, burros, and llamas are defined as pack animals.

(b) Areas designated for use of horses or pack animals

The use of horses and pack animals are allowed in the following area and with the following restrictions:

- The NPS lands east of the Spur 454 area, except within the San Pedro Campground and on the campground access road, except to cross the road.
- Overnight camping with stock is prohibited.

The use of horses and pack animals is traditional in this area and will not cause significant resource degradation.

§ 2.21 Smoking

Smoking is prohibited in all park buildings, including but not limited to, offices, ranger stations, visitor contact areas, and toilet facilities.

§ 2.22 Property

(a)(2) Unattended property designations and conditions

The following property can remain in the park longer than 24 hours with the associated conditions:

Mooring private vessels

- Mooring of vessels is allowed for no more than seven days.
- Vessels may not be moored at or near a public boat ramp, fishing dock, swim area, or Scuba Cove.
- Vessels that become a navigational hazard will be towed, and the owner will be contacted by a Law Enforcement Ranger.
- Vessels and the tires or similar devices used to protect temporarily beached vessels on the shoreline are allowed during the length of stay, provided they are not unattended for more than 24 hours. An attended vessel is defined as being launched away from the shoreline and used in its intended manner.
- No more than two tires/devices per vessel are allowed and they must be clearly labeled with owner's name and vessel number. These tires must be removed when no longer used to beach a vessel overnight.

This regulation is intended to reduce visual pollution from the storing of private vessels on the shore of a public reservoir and prevent beaching devices (tires) from becoming trash.

Vehicles and boat trailers

- Legally registered vehicles and boat trailers may be left unattended at approved parking areas while the associated park permitted vessel is in use on the water.
- This does not apply to boat trailers for vessels moored longer than 14 days in marina facilities.

Parking areas are provided specifically for users of the park, but limited space does not allow for parking by persons not using the park or who need extended storage facilities for their trailers.

Deer hunting stands

- Deer hunting stands may be left unattended in hunt areas for up to 24 hours.
- Unattended stands must be clearly labeled with the NPS Hunting Permit number.
- Placing of a stand does not confer exclusive right of owner to use the area, i.e., hunting areas will be used on a first-come, first-served basis.

Deer hunt stands are allowed by State law. Limiting unattended hunting stands ensures space availability for other hunters wanting to use the areas.

Temporary mooring or jugs

Temporary moorings or "jugs" for "baited holes" are allowed under the following conditions:

- "Jugs" and jug lines: Each properly labeled jug line is valid for 6 days after the date set out.
- Only plastic jugs not over 1 gallon in size or plastic floats are allowed.
- Only jugs may be used that have not contained oil or other petroleum products or hazardous chemicals.
- Floating rope or wire lines are prohibited. Only nylon, cotton, or other non-floating lines are allowed.
- Floats are to be checked and re-dated a minimum of every 30 days. Any jug left more than 30 days without re-dating will be removed.
- They cannot cause a hazard to navigation.
- The entire mooring assembly, from anchor to jug, is easily removable from the water.

- Placing of a jug does not confer exclusive right of owner to use the area, i.e., fishing areas will be used on a first-come, first-served basis.

Mooring jugs are allowed by State law and are a traditional use for this area.

§ 2.23 Recreation Fees

(a) Recreation fees shall be established as provided for in part 71 of this chapter.

The Federal Lands Recreation Enhancement Act (Public Law 108-447) (FLREA), authorizes Amistad National Recreation Area to collect recreation fees. Amistad has established recreation fees for frontcountry camping, and lake use (boating).

§ 2.35 Alcoholic Beverages and Controlled Substances

(3)(i) Alcoholic beverage closures

The following areas are closed to the possession of any open alcoholic beverage container or the consumption of any alcoholic beverage:

- Within the park administrative buildings, ranger stations, and visitor centers.
- By hunters in a designated hunt area while in possession of a weapon.

The use or possession of alcoholic beverages is inappropriate in government administrative facilities. The restriction on hunters is to provide for hunter and visitor safety.

§ 2.51 Demonstrations

(c)(2) Designated available park areas

The following locations are available for demonstrations and the sale or distribution of printed matter (for maps see Appendix A):

- Diablo East Area – picnic area near DE restrooms, adjacent to DE Trailhead.
- Rough Canyon Area – dirt area south of the parking lot adjacent to the Rough Canyon Ranger Station.
- Pecos Area – parking area west of the comfort station, adjacent to the flagpole.

These areas provide a location near high visitor use areas for public assemblies, while allowing for safety of demonstrators.

§ 2.62 Memorialization

(b) Scattering of human ashes

The scattering of human ashes, from the ground or air, is allowed provided the ashes fall at least 100 yards from any developed area or archeological site. A permit is not needed for scattering of ashes at this time.

Such activity is minimal and would not cause negative impacts on resources or visitor activities.

§ 3.2 Do other boating laws and regulations apply to me when I operate my boat on park waters?

(b)(a) Vessels and their operation on all waters subject to NPS jurisdiction are governed by non-conflicting boating safety laws and regulations of the State within whose interior boundaries a park area or portion thereof is located.

§ 3.3 Am I required to obtain a permit to operate a vessel in a park area?

All motorboats of any size and all sailboats 14 feet in length or longer must have displayed a valid Amistad National Recreation Area Lake Use Pass. The following conditions of the annual lake use pass apply:

- An annual lake use pass, fee machine receipt must be exchanged for an annual decal within 14 days.
- The annual decal must be affixed to the port side of the vessel 6 inches aft of the registration.

§ 3.4 For what purposes may my vessel be inspected?

(a) An authorized person may at any time stop and/or board a vessel to examine documents, licenses, or permits relating to operation of the vessel and to inspect the vessel to determine compliance with regulations pertaining to safety equipment, vessel capacity, marine sanitation devices, and other pollution and noise abatement requirements.

§ 3.8 Vessel Operations Which Are Prohibited

- Operating at a rate of speed greater than is reasonable and prudent or greater than will permit the driver to stop the vessel within the assured clear distance ahead.
- Operating in a manner to cause a hazardous wake or wash.
- Operating in a circular course around another vessel, PWC, or individual engaged in water activities unless retrieving a downed or fallen water skier or a person engaged in similar activity.
- Moor or attach to any buoy, beacon, light marker, stake, flag, or other aid to safe operation or to move, to remove, to displace, to tamper with, to damage, or to destroy the same.
- Anchoring in the traveled portion of a river or channel so as to prevent, impede, or interfere with safe passage of any other boat through the same area.
- Operating within an area designated as fishing, swimming, or otherwise restricted.
- Operating within a designated "no wake" area except at headway speed without creating a swell or wake.

- Engaging in water skiing, surfboarding, or other similar activity between 1/2 hour after sunset to 1/2 hour before sunrise. This shall not apply to vessels used in recognized water ski tournaments, competitions, exhibitions, or trials provided that the water area is adequately lighted.
- Operating while intoxicated (loss of mental or physical faculties or blood alcohol content of .08 or higher). First conviction punishable by a fine not to exceed \$2,000, confinement in jail not to exceed 180 days, or both; second conviction punishable by a fine not to exceed \$4,000, confinement not to exceed one year, or both; third conviction punishable by a fine not to exceed \$10,000, imprisonment for not more than 10 years or less than 2 years, or both. **Failure to submit a specimen to determine blood alcohol content may result in suspension of your driver license.
- Operating any vessel or manipulating any water skis, aquaplane, or similar device, in a willful or wanton disregard of the rights or safety of others and at a speed or in a manner to endanger or likely to endanger any person or property. (Conviction punishable by a fine of not less than \$200 nor more than \$2,000, by confinement in jail not to exceed 180 days, or both.)
- Swimming or diving within 200 yards of any sight-seeing or excursion boat, except for maintenance purposes or unless within an enclosed area.
- Operating within 50 feet of a "Diver Down Flag" or operating a boat within 150 feet of a "Diver Down Flag," except at headway/steerage speed.
- Failing to comply with the United States Coast Guard (USCG) Inland Rules of the Road.
- The engine cut-off switch (ECOS) must be worn by the operator on any vessel under 26 feet in length that is equipped with the ECOS and the vessel is being operated at greater-than headway speed.

(a)(2) Designated launch ramps

The boat ramps in the following locations are designated vessel launching and recovery sites and will be signed as open or closed depending on useable water levels:

- Black Brush Point concrete boat ramps.
- Box Canyon concrete boat ramp.
- Diablo East concrete boat ramp.
- 277 North Campground concrete boat ramps (2).

- Pecos River concrete boat ramp.
- Rough Canyon concrete boat ramps (2).
- Southwinds Marina concrete boat ramp.
- Spur 406 Campground concrete boat ramps (2).
- Spur 454 concrete boat ramp.
- Amistad Acres concrete boat ramp.

The park maintains temporary low-water boat ramps that will be designated as boat launching sites depending on water levels and safe launching conditions. Approved ramps will be designated on site with an official NPS sign.

Fluctuating water levels may require closure of some of the developed launches. The temporary ramps may be suitable for launching and retrieving vessels depending on water levels, while not adversely impacting natural and cultural resources and other visitor activities.

(b)(3) Designated flat wake speed areas

Operating a vessel in excess of flat wake speed is prohibited in the following areas:

- Within harbors, including Diablo East, Rough Canyon, Box Canyon, and Southwinds Marina.
- Mooring areas.
- Any “no wake” buoyed area.

§ 3.12 Water Skiing or Other Similar Activities

(a) The towing of a person by a vessel is allowed only in designated waters.

Lake Amistad is open to the towing of persons by vessels, except in the following areas:

- That portion of the upper Devils River above Indian Springs.
- Those areas marked by a regulatory marker.

- The entire Pecos River arm of the reservoir.
- The arm of the Rio Grande up-river from Seminole Canyon.
- Within “no wake” areas.
- Within harbors.

These areas present safety hazards to persons being towed by vessels.

§ 3.16 Swimming and Wading

Swimming and wading are allowed, except in the following areas:

- Mooring areas.
- Harbors.
- Within 200 feet of fishing docks.
- Any other area posted as closed to swimming or visitor use.

These are unsafe areas for swimmers where vessel concentrations and fishing hooks and lines might cause injuries.

§ 3.18 Snorkeling or Underwater Diving

(a) Snorkeling and underwater diving closures and restrictions

Scuba diving is allowed throughout the park, except at those locations closed under §1.5.

Spear guns are prohibited in the designated Scuba Cove.

The Scuba Cove draws many divers in training, who need a safe learning environment free of projectiles.

§4.2 State Law Applicable

(a) Unless specifically addressed by regulations in this chapter, traffic and the use of vehicles within a park area are governed by State law. State law that is now or may later be in effect is adopted and made a part of the regulations in this part.

- The use of unregistered motor vehicles, such as, but not limited to all-terrain vehicles, utility vehicles, golf carts, and go karts, is prohibited within Amistad NRA. An exception to this prohibition may be granted by the Superintendent through the issuance of a permit in support of a special event.

This prohibition is enacted to reinforce Texas state law which prohibits these types of vehicles on public roads and to promote visitor safety by not having small, slow-moving vehicles in the same areas as full-sized vehicles.

§ 4.10 Travel on Park Roads and Designated Routes(a) Operating a motor vehicle is prohibited except on park roads, in parking areas and on routes and areas designated for off-road motor vehicle use.

Amistad has not implemented special regulations for off-road motor vehicle use; therefore, all off-road travel is prohibited including beyond the green areas shown on the maps of Box Canyon, Rough Canyon, Spur 406, and Spur 454 in Appendix C.

In addition, the following areas have signs and rock barricades or just signs indicating an area closed to vehicle traffic:

- San Pedro Cliffs parking area.
- Spur 454 boat launching and take-out area.
- 277 North area near the old bridge.
- Spur 406.
- Amistad Acres.
- Box Canyon.
- Steam Plant ramp.

Off-road travel is prohibited to prevent erosion, to protect fragile ecosystems including native plants and animals and their habitat, and to protect archeological sites. This

amendment serves to further clarify and define “off-road” for Amistad National Recreation Area.

§ 4.11 Load, Weight, and Size Limits

(a) Vehicle load, weight and size limits established by State law apply to a vehicle operated on a park road. However, the superintendent may designate more restrictive limits when appropriate for traffic safety or protection of the road surface. The superintendent may require a permit and establish conditions for the operation of a vehicle exceeding designated limits.

- Individual motor vehicles or trailers in excess of 28 feet in length are prohibited within Governors Landing Campground.

Physical design limitations of the campground prohibit safe operation of vehicles over 28 feet long.

§ 4.21 Speed Limits

(b) Designated speed limits

The speed limit is 35 mph in the following areas:

- Governors Landing Road to the first entrance to the upper (west) parking lot.
- Spur 454 access road from the posted speed limit sign near the park boundary to the congested area beginning near the “cliffs.”

The speed limit is 30 mph in the following areas:

- The Southwinds Marina access road from Spur 349 to the recreation center grounds.
- Black Brush Point access road.
- Spur 406 access road from the park boundary to within 100 feet of campsite #1.
- Diablo East access road to the first entrance to the upper (west) parking lot.

- Spur 406 from 100 feet beyond the last campsite to the lakeshore.

These roadways pass through heavy vegetation and wildlife crossing areas. These roads are also shared with pedestrians and bicyclists. Curves, blind hills, and uneven road surfaces necessitate slower speeds on these roads.

The speed limit is 15 mph in the following areas:

- Southwinds Marina Recreation Center grounds and campground.
- Spur 406 Campground.
- Diablo East access road from the upper (west) parking lot to the lake, marina, and throughout the parking lots.
- The Pecos Ranger Station road from the park boundary to the boat ramp.
- Spur 454 from the posted sign near the congested cliff and boat ramp areas.
- All unpaved roads within the park.

These paved roads are in congested areas with numerous pedestrians and other traffic. Unpaved roads have numerous dips and bumps and pass by heavy roadside vegetation and wildlife crossing areas.

§ 4.30 Bicycles (including e-bikes)

Park Roads

The use of bicycles (including e-bikes) is permitted on park roads and in parking areas that are otherwise open for motor vehicle use by the general public.

Designated Bicycle Areas

The following areas are designated for bicycle use (and e-bikes in pedal-assist mode):

- The existing old, dirt roads within Hunt Areas 2 and 5 are open to recreational bicycling with the following exceptions:
 - During the hunting season, only hunters with hunting permits are authorized to use bicycles in support of hunting activities.

These hunt areas have old fire and ranch roads that can be used for recreational bicycling without resource degradation.

Description of the dirt roads in Hunt Area 2 and Hunt Area 5:

- The road in Hunt Area 5 is approximately 1.5 miles long. The road system in Hunt Area 2 is approximately 2.5 miles long (see Appendix B for map of Hunt Areas).
- Most existing bicycle use is related to hunters scouting the hunt areas or expediting their access to preferred locations within the hunt areas.
- Bicycles (and e-bikes in pedal-assist mode) are also allowed on the northern section of paved road Spur 454 beyond the gate, when it is closed to motor vehicles due to higher reservoir levels (see attached map). This stretch of paved road, from the gate to where the road meets the water, varies with lake level from 0 to 2.25 miles in length.

The gate prevents motor vehicles from accidentally driving into the lake when the reservoir is high. This is not a concern with cyclists.

(i) E-Bike policy

- The term “e-bike” means a two- or three-wheeled cycle with fully operable pedals and an electric motor of less than 750 watts (1 h.p.).
- Class 1, 2, and 3 e-bikes are allowed in Amistad National Recreation Area where traditional bicycles are allowed.
- A Class 1 e-bike is a low-speed, pedal-assisted, electric bicycle equipped with a motor that only provides assistance when the rider is pedaling. It ceases to provide assistance when the bicycle reaches the speed of 20 miles per hour.
- A Class 2 e-bike is a low-speed, throttle-assisted, electric bicycle equipped with a motor that may be used exclusively to propel the bicycle. It ceases to provide assistance when the bicycle reaches the speed of 20 miles per hour.
- A Class 3 e-bike is a low-speed, pedal-assisted, electric bicycle equipped with a motor that only provides assistance when the rider is pedaling. It ceases to provide assistance when the bicycle reaches the speed of 28 miles per hour.
- E-bikes are prohibited where traditional bicycles are prohibited.
- A person operating an e-bike is subject to 36 CFR 1.4 and 36 CFR 4.30(i) and the following sections of 36 CFR part 4 that apply to the use of traditional bicycles: sections 4.12, 4.13, 4.20, 4.21, 4.22, 4.23, and 4.30(h).
- Except where use of motor vehicles by the public is allowed, using the electric motor to move an e-bike without pedaling is prohibited.

- E-bikes are also permitted on paved/unpaved roads and/or parking lots that are currently open to public vehicular traffic.
- Except as specified in this Compendium, the use of an e-bike within Amistad National Recreation Area is governed by State law, which is adopted and made a part of this Compendium. Any violation of State law adopted by this paragraph is prohibited.
- The park will monitor reported accidents and user conflicts of e-bikes and other users.
- Should future unanticipated impacts to public health and safety, natural and cultural resources, and operational activities occur, park management will reevaluate use and/or activity restrictions and update the decision accordingly.

§ 5.5 Filming and Still Photography

In most cases, permits and fees are not required for filming, still photography, or audio recording that involves eight or fewer individuals. In order to avoid permit and fee requirements, the filming, still photography, or audio recording must meet all of the following conditions:

- Occurs in areas open to the public;
- Uses hand-carried equipment only;
- Does not require exclusive use of a site;
- Does not adversely impact park resources, values, or other visitors; and
- Is not likely to result in additional administrative costs for the NPS.

Permits and fees are never required for filming, still photography, or audio recording that is associated with an activity or event that has been authorized under a written instrument (e.g., permit or agreement), such as a wedding, sporting event, demonstration or other activity.

All filming, still photography, and audio recording is treated the same under the new law. It does not matter whether it is commercial, non-commercial, for content creation, by a student, or conducted by media or for news gathering.

When a filming, still photography, or audio recording permit is required, the National Park Service will charge location fees and fees to recover its costs to administer the permit, including application fees.

Individuals and groups conducting filming, still photography, or audio recording remain subject to all other laws and regulations applicable to visitors to park areas, including those requiring permits for certain activities (e.g., special events or demonstrations) and those prohibiting disturbance or other negative impacts to natural or cultural resources.

Individuals and groups conducting filming, still photography, or audio recording are subject to entrance and/or recreation fees that may apply in park areas even when a permit is not required.

This brings 36 CFR 5.5 into compliance with the EXPLORE Act of 2025 (54 U.S.C. 100905).

§7.79 Special Regulations – Amistad National Recreation Area

(a)(1) Hunting times and locations designated

Hunting is allowed in the areas generally described below and specifically detailed on NPS maps (see Appendix B):

- Hunt Area 1 – Adjacent to and southwest of US Highway 90.
- Hunt Area 2 – Adjacent to the Evans Creek area of the lake.
- Hunt Area 3 – Northeast of US Highway 90.
- Hunt Area 4 – On the Devils River north of San Pedro Canyon.
- Hunt Area 5 – Adjacent to US Highway 277 and south of San Pedro Canyon.

(a)(2) Hunting season and species allowed

Hunting will be allowed during the listed seasons designated by Texas Parks and Wildlife Department for the following species:

- White-tailed deer – using archery, may be hunted during the archery and general deer season.
- Axis deer – using archery, may be hunted during archery, general deer, and quail seasons.
- Javelina – using archery, may be hunted during archery, general deer, and quail seasons.

- Turkey – using archery, may be hunted only during the fall turkey season.
- Rabbit – using archery, may be hunted during archery, general deer, and quail seasons.
- Rabbit – using a shotgun, may be hunted during dove, quail, and waterfowl seasons.
- Mouflon sheep (exotic) – using archery, may be hunted during archery, general deer, and quail seasons.
- Aoudad sheep (exotic) – using archery, may be hunted during archery, general deer, and quail seasons.
- Blackbuck (exotic) – using archery, may be hunted during archery, general deer, and quail seasons.
- Feral hog (exotic) – using archery, may be hunted during archery, general deer, and quail seasons.
- Dove – using shotgun, may be hunted during the Central Zone dove season.
- Quail – using shotgun, may be hunted during quail season.
- Teal – using shotgun, may be hunted during the September teal-only season.
- Duck – using shotgun, may be hunted during the late migratory game bird season.

The taking of any other wildlife not specifically listed above is prohibited.

Crossbows: Any person, regardless of physical ability, may use a crossbow to hunt game animals or game birds. An Archery Endorsement is also required for crossbows to hunt deer during the Archery-only Open Season. Crossbows are lawful for non-protected nongame animals.

Conditions of hunting permit (reference 36 CRF §1.6)

As a condition of the hunting permit, hunters are required to:

- Carry a valid NPS Hunting Permit on their person while hunting in the NPS hunt areas.
- If field dressing a deer, sheep, blackbuck, javelina, or feral hog, do so in the hunt area. Field dressing in the hunt area parking areas is prohibited.

- If hunting ducks from a boat, you must be within 100 yards of the exterior shoreline boundary of an approved hunt area. Shooting from the boat must be directed towards the hunt area shoreline.

As a condition of the hunting permit, the following are prohibited:

- Consuming or possessing alcoholic beverages in the hunt areas.
- Hunting over a baited area.
- Possession of baiting material. Baiting material is defined as minerals, vegetative material, or any other food substance placed to lure any wildlife resource.
- Using dogs to hunt, except for bird dogs trained to retrieve dove, quail, or waterfowl.
- Constructing stands or other structures is prohibited. The use of portable hunting stands is allowed.
- Attaching stands to trees by penetrating the bark is prohibited.
- Leaving stands unattended without marking the hunters' permit number.
- Leaving stands unattended for longer than 24 hours.

Appendix A

Demonstration and Printed Material Distribution Areas

The following maps show, outlined in red, the areas designated for public demonstrations and for the sale or distribution of printed material pursuant to 36 CFR §2.51 and 36 CFR §2.52:

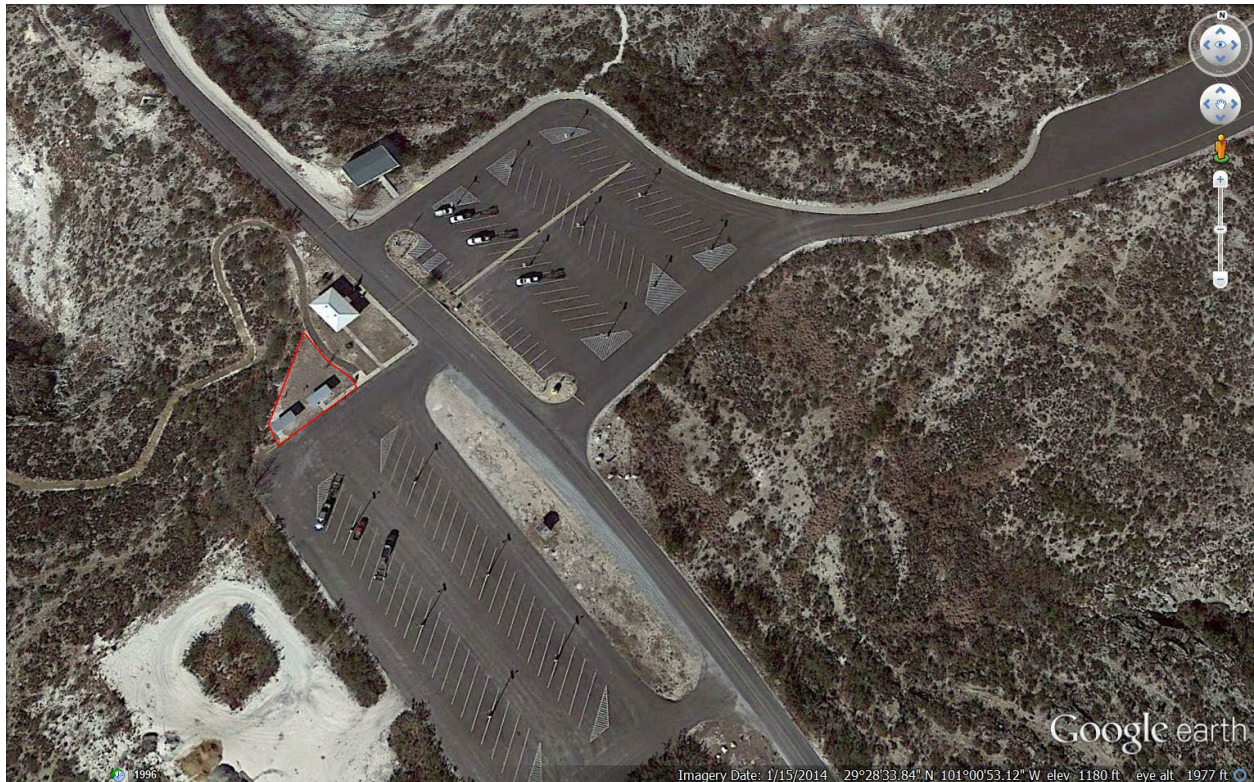


Figure 1 - Diablo East Demonstration Area. Aerial photo of Diablo East parking areas with designated demonstration area outlined in red. Google Earth image.



Figure 2 - Rough Canyon Demonstration Area. Aerial photo of Rough Canyon parking areas with designated demonstration area outlined in red. Google Earth image

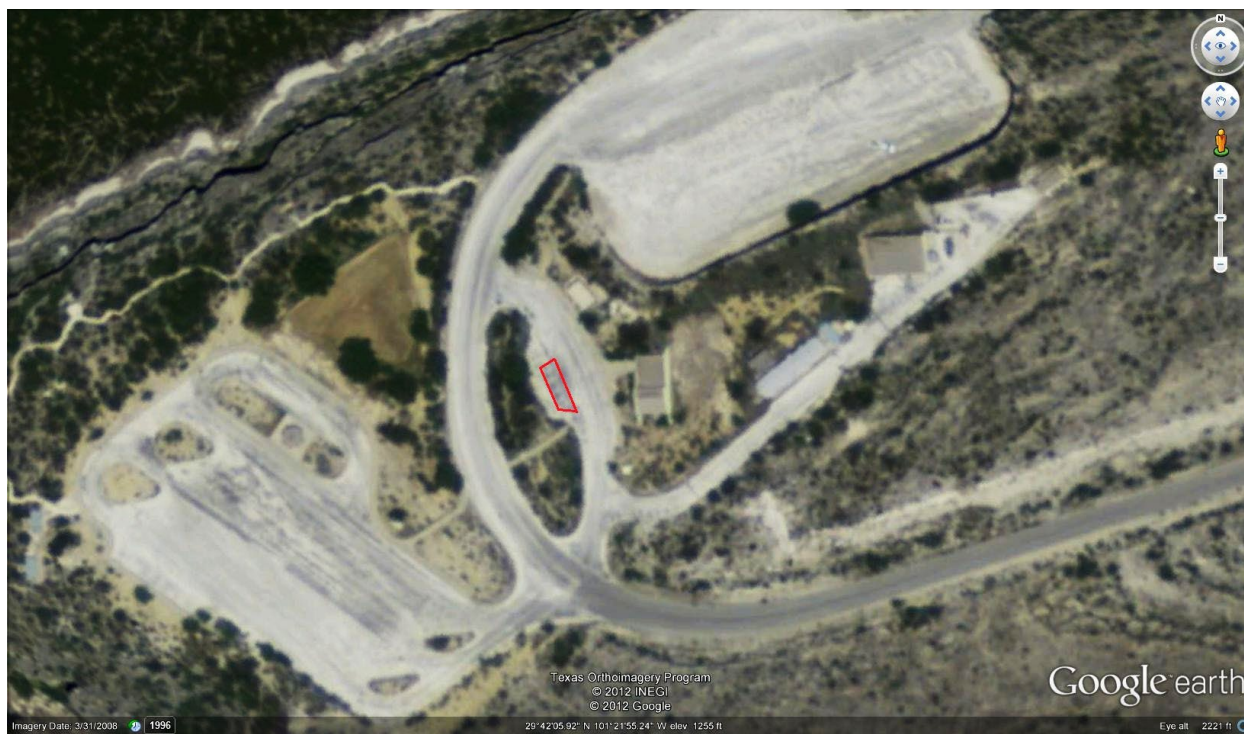


Figure 3 - Pecos Demonstration Area. Aerial photo of Pecos parking areas with designated demonstration area outlined in red. Google Earth image

Appendix B

Designated Hunt Areas

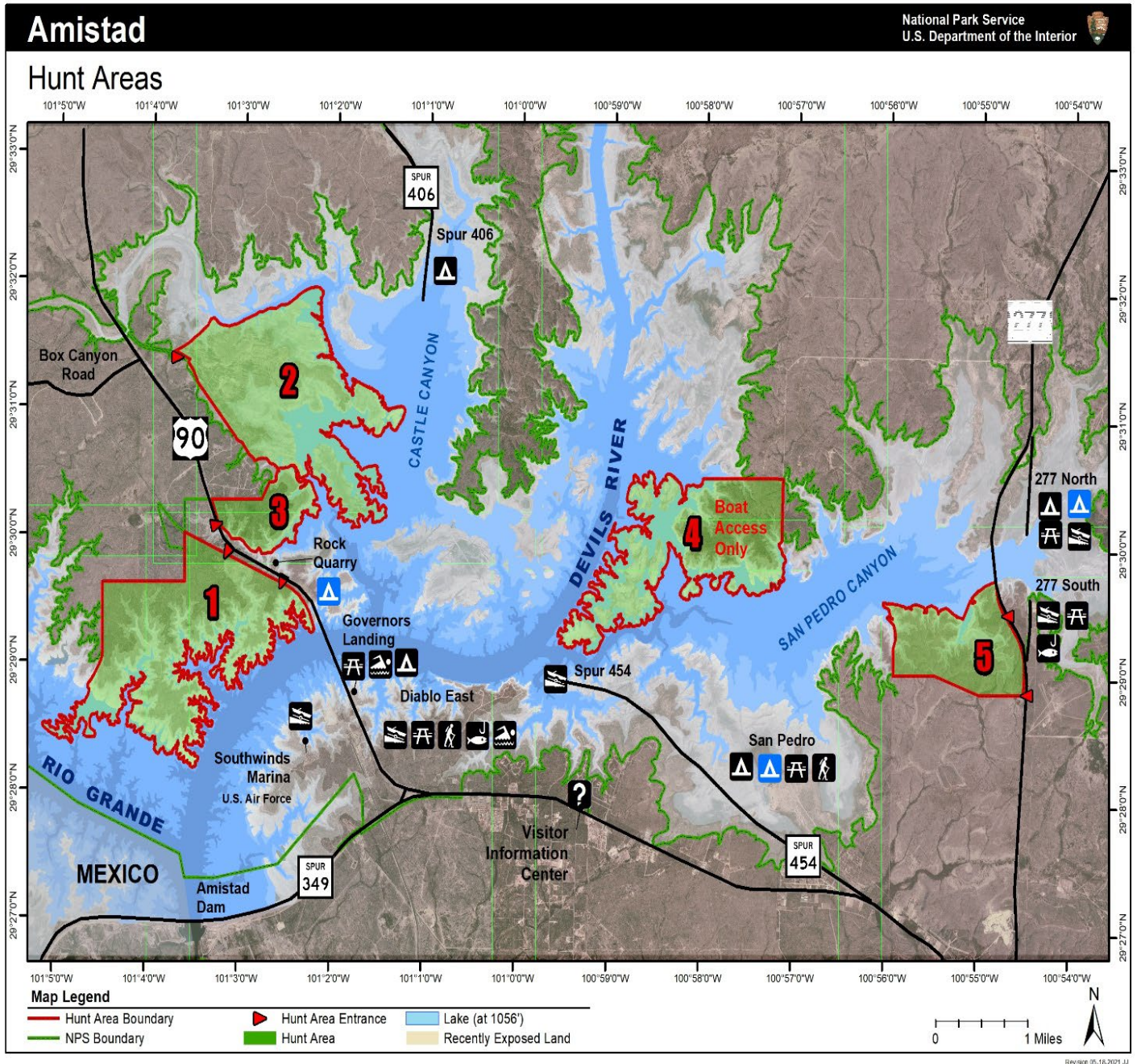


Figure 4 - Hunt Areas. There are five designated hunt areas outlined in red; three are to the west and two to the east. NPS map

Appendix C

Identification of Unpaved Parking Areas



Figure 5 - Box Canyon Off-road Travel Map (boundaries for approved travel in green). NPS map



Figure 6 - Rough Canyon Off-road Travel Map (boundaries for approved travel in green). NPS map

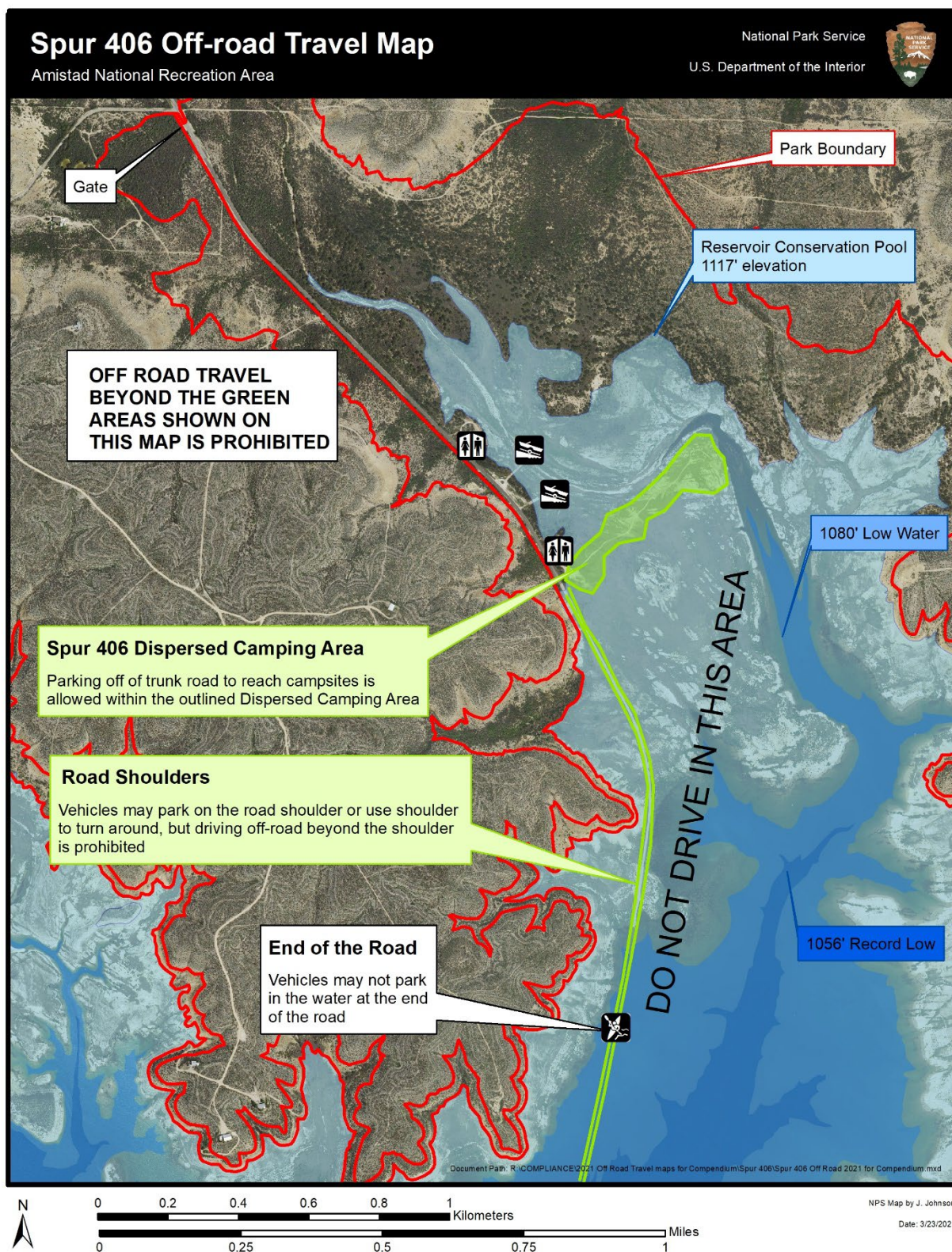


Figure 7 - Spur 406 Off-road Travel Map (boundaries for approved travel in green). NPS map