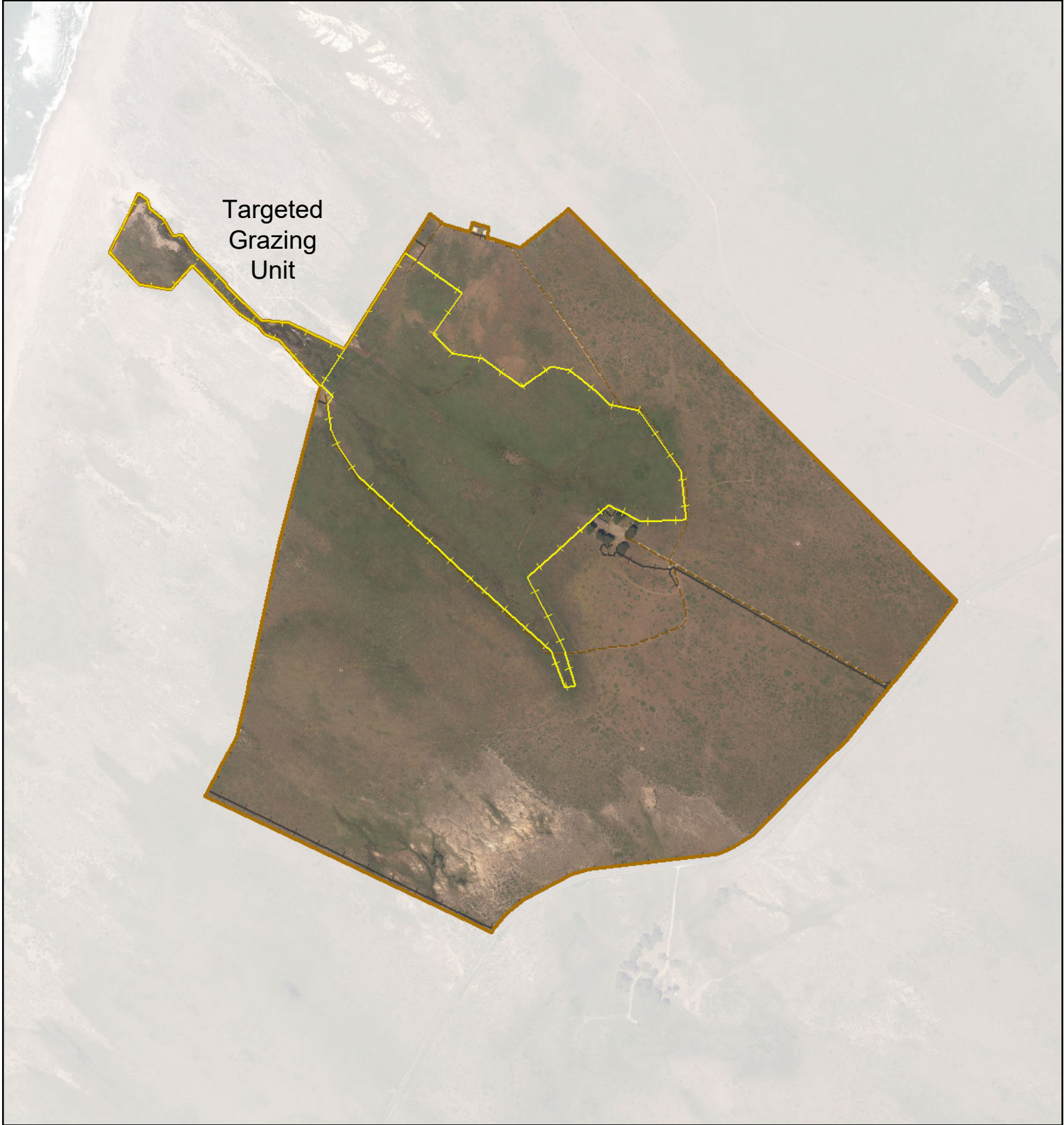
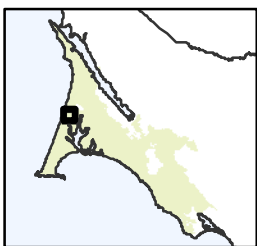


EXHIBIT A: ATT Ranch (Allotment 7) Marin County, CA AGRI-8530-2600-07-7001

U.S. Department of the Interior
National Park Service
Point Reyes National Seashore



Targeted
Grazing
Unit



- Ranch Boundary
- Fence
- Riparian Fence
- Paved Road
- Unpaved Road
- NHD Flowline
- Stock Pond

Map Date: 6/24/2022
Imagery: 2018 Golden Gate National Parks Conservancy



0 0.15 Miles