

Zion Wilderness Map



NO CAMPIRES

Campfires are prohibited in the Zion Wilderness. Fuel stoves and lanterns may be used for camping purposes, but should only be lit on bare ground away from all vegetation. In the interest of protection of environmental and scenic values, protection of natural resources, and public safety, these restrictions on fires are necessary. Please do all you can to protect the park from human caused wildfires.



FOOD STORAGE

All food and trash must be stored inside a secure hard sided container or interlocking wire mesh bag. For the welfare of park wildlife, your safety, and the safekeeping of your equipment, you should make your food items as unobtainable as possible. Your actions can put other people at risk of food pilfering, since animals regularly revisit areas where they easily obtained food. At worst, your behavior may lead directly to the death of a wild animal. These guidelines are meant to protect park wildlife, people, and equipment.



LEAVE NO TRACE

Protect the park from all graffiti and vandalism. All graffiti, including words, drawings, and arrows, no matter how small or superficially drawn, carved, scratched, or painted, is vandalism. Do not build rock cairns. If placed incorrectly, they can mislead visitors, cause unnecessary damage, and lead to potential injuries. Help protect Zion by not leaving your mark. Make memories, take photos, and leave no trace.



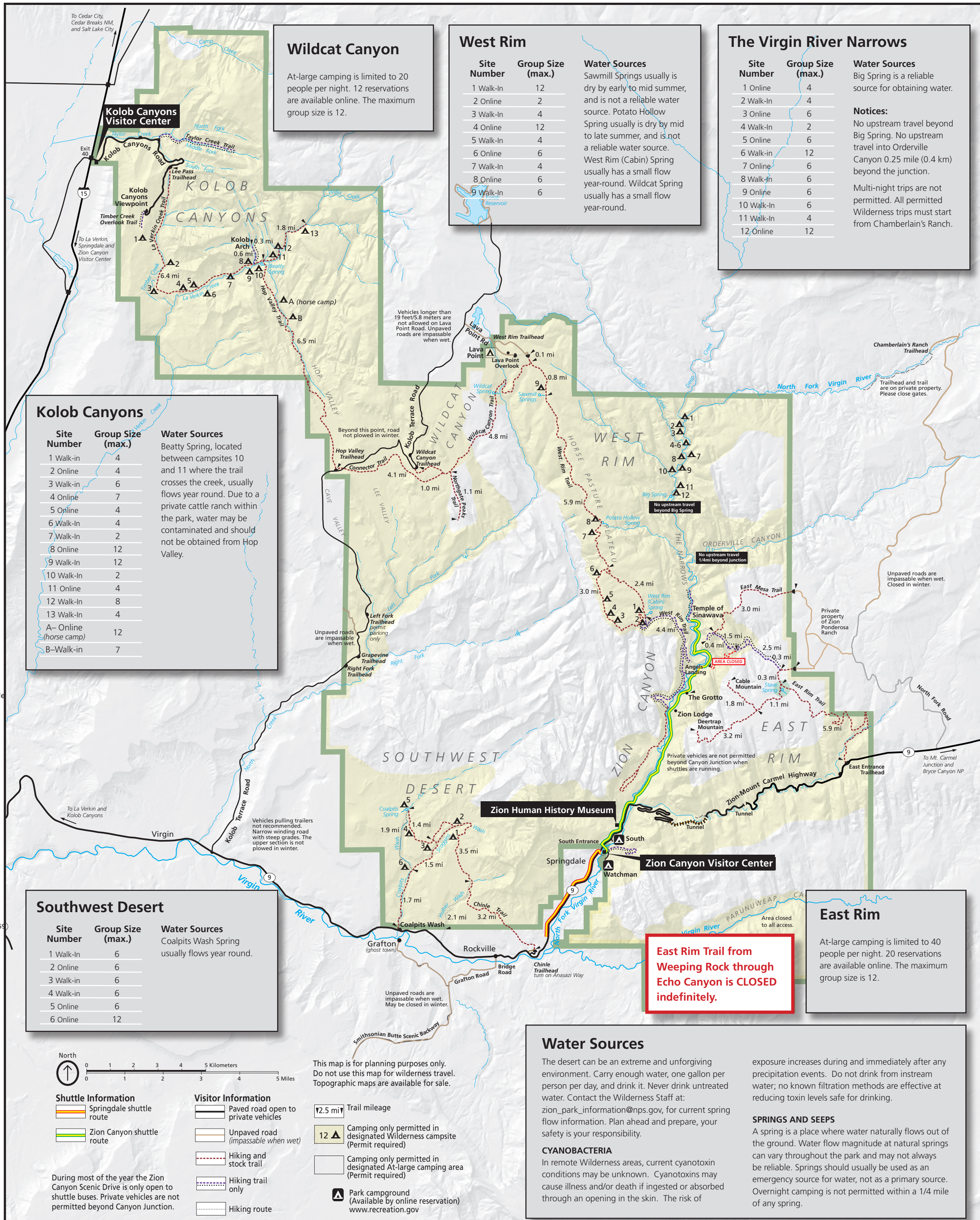
HUMAN WASTE

Pack out all solid human waste, toilet paper, diapers, and personal hygiene products. An environmentally friendly human waste disposal bag, complete with use and disposal instructions, is available for sale in the Zion Forever Park Store and at local outfitters. The contents of the disposal bag may then be deposited in the trash. Use of this waste disposal system is required for all Wilderness permit holders.



GROUP SIZE

Wilderness trails have a group size limit of 12. These limits apply to all trips into the park's wilderness, including trips that do not require a permit. Group size limits are strictly enforced. Groups that exceed these limits may not split up and visit the same route, or wilderness trail on the same day, but may split up and visit different areas.



ZION CANYON SHUTTLE

The Zion Canyon Scenic Drive is closed to private vehicles during most of the year. The Zion Canyon shuttle provides access to the trailheads for the Emerald Pools, the West Rim, and the Narrows.

PRIVATE VEHICLES

The Zion-Mount Carmel Highway, Kolob Terrace Road, and Kolob Canyons Scenic Drive are open to private vehicles. Park roads are used by vehicles, bicycles, and wildlife. Obey posted speed limits. Park only in designated spaces to protect fragile vegetation.

BICYCLES

Bicycles are not permitted in the Zion Wilderness. Bicycling is permitted on all park roadways and on the Pa'rus Trail. Bicyclists must ride single file and stop to let shuttle buses pass.

HIKER SHUTTLE SERVICES

Commercial shuttle services can be hired to provide point-to-point pick-up and drop-off at designated parking areas within the park. All services must have a current Commercial Use Authorization (CUA) with Zion National Park. Search online for current authorized services.

OTHER VEHICLES

Any use of any off-highway vehicle (OHV), all-terrain vehicle (ATV), utility vehicles (UTV) or other motorized conveyance manufactured for recreational non-highway, off-road, or all-terrain travel is prohibited within Zion National Park.