

Yosemite National Park Mariposa Grove Restoration

National Park Service
U.S. Department of the Interior



Mariposa Grove Restoration EIS



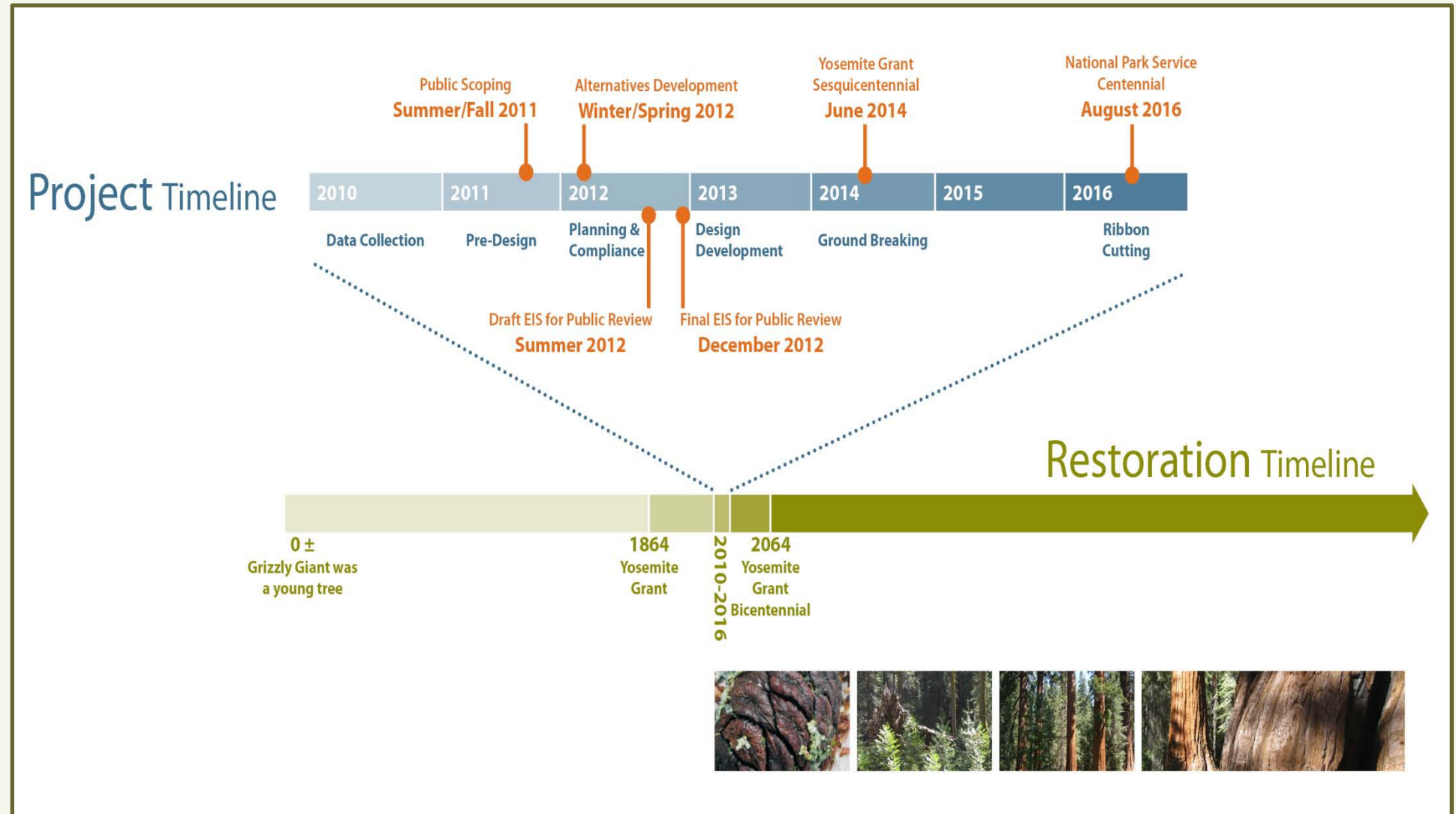
Public Scoping

Yosemite National Park Mariposa Grove Restoration



National Park Service
U.S. Department of the Interior

Project Milestones



Yosemite National Park Mariposa Grove Restoration

National Park Service
U.S. Department of the Interior



Taking a Trip Through Time....



Yosemite National Park Mariposa Grove Restoration

National Park Service
U.S. Department of the Interior



Early Threats to Sequoia Groves

Sequoia wood is very resistant to decay but overall can be brittle and fibrous. Historically, it was typically used for shingles and fence posts.



In 1891, the Mark Twain Tree was cut down so that sections of it could be displayed in museums.

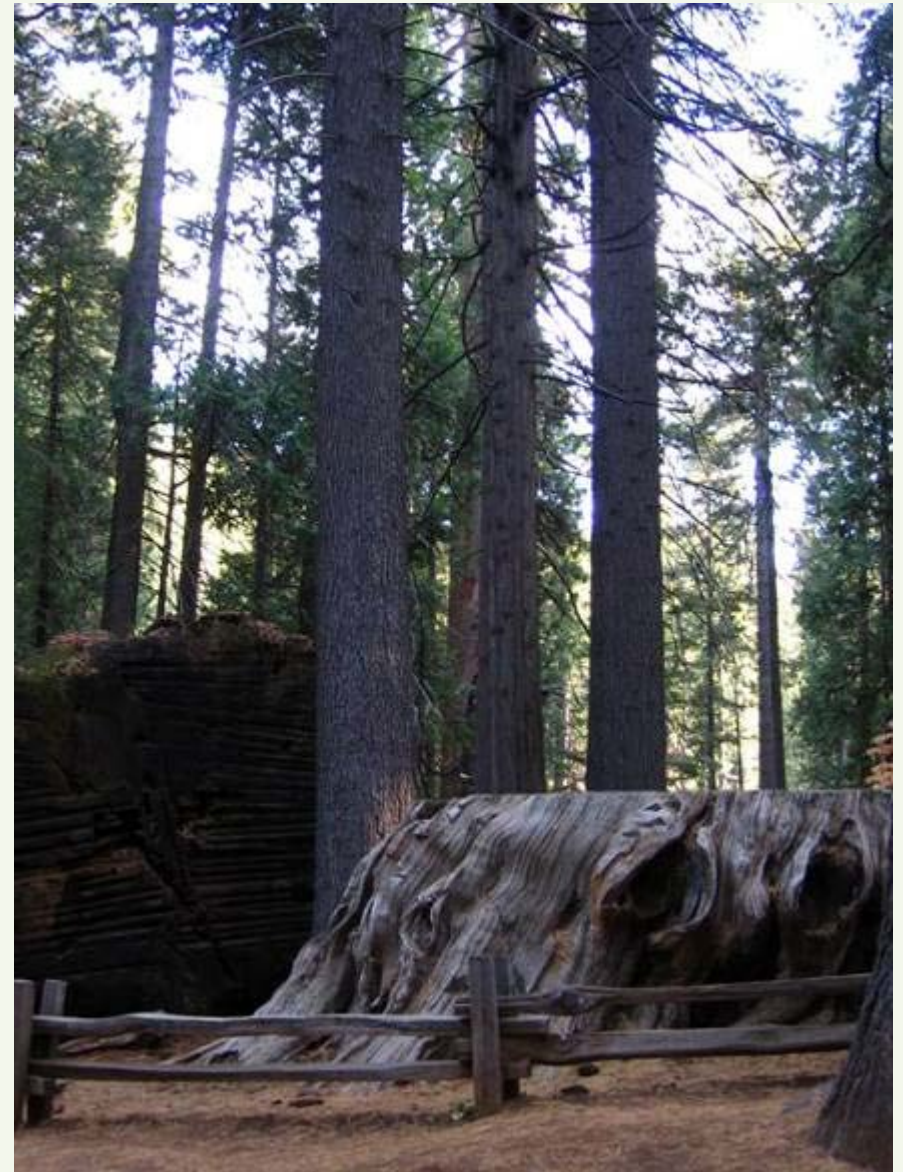


Yosemite National Park Mariposa Grove Restoration

National Park Service
U.S. Department of the Interior



Calaveras Grove of Big Trees



Yosemite National Park

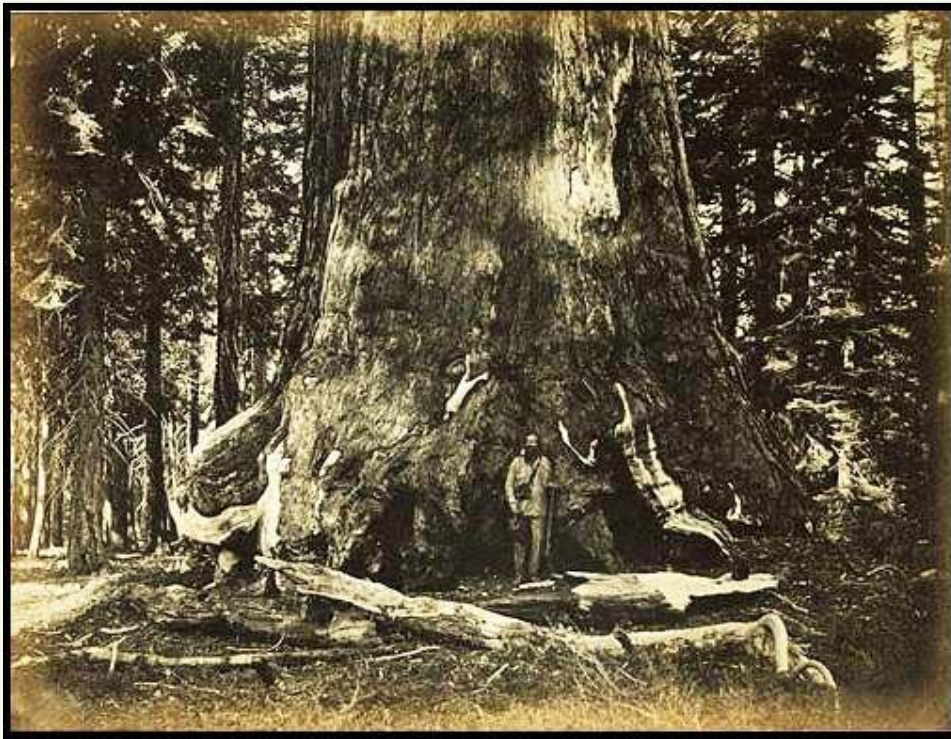
Mariposa Grove Restoration

National Park Service
U.S. Department of the Interior



Galen Clark

Clark was considered the “Guardian of the Mariposa Grove.” Many travelers to the Grove stayed at Clark’s Station. Mount Clark and the Clark Range were named in his honor.

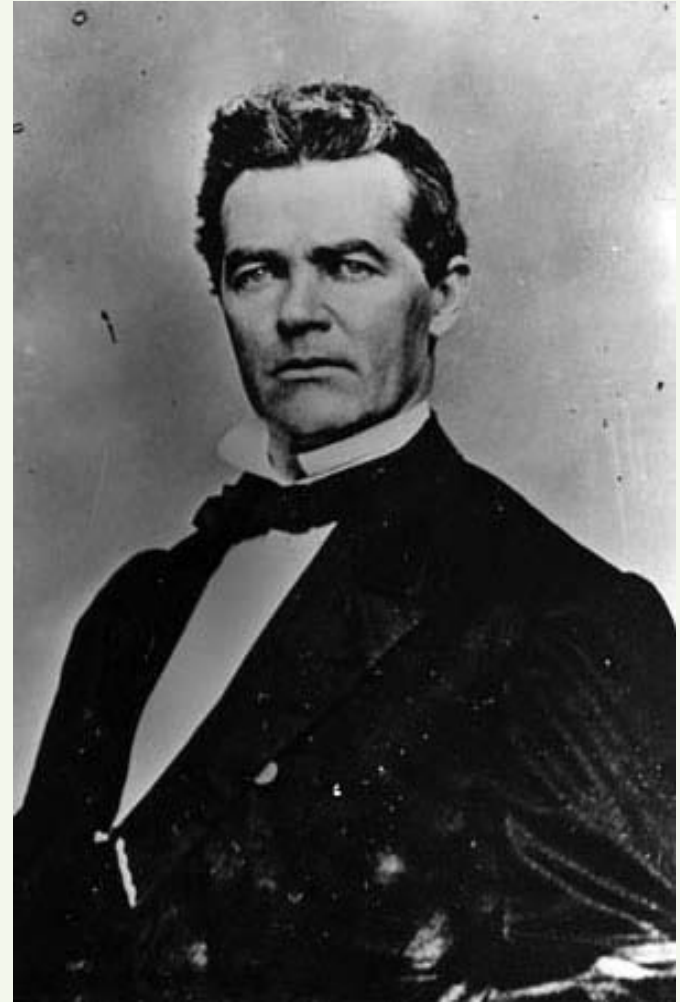


Yosemite National Park Mariposa Grove Restoration

National Park Service
U.S. Department of the Interior



Jessie Benton Fremont



John Conness

Yosemite National Park Mariposa Grove Restoration

National Park Service
U.S. Department of the Interior



Protection of the Mariposa Grove

“An Act Authorizing a Grant to the State of California of the “Yo-Semite Valley,” and of the Land embracing the “Mariposa Big Tree Grove”

--- signed by President Lincoln, June 30, 1864.

The first legislation passed by Congress to specifically set aside public lands for their scenic values and *“be held for public uses, resort and recreation.”*



Wawona Tree ca.1928



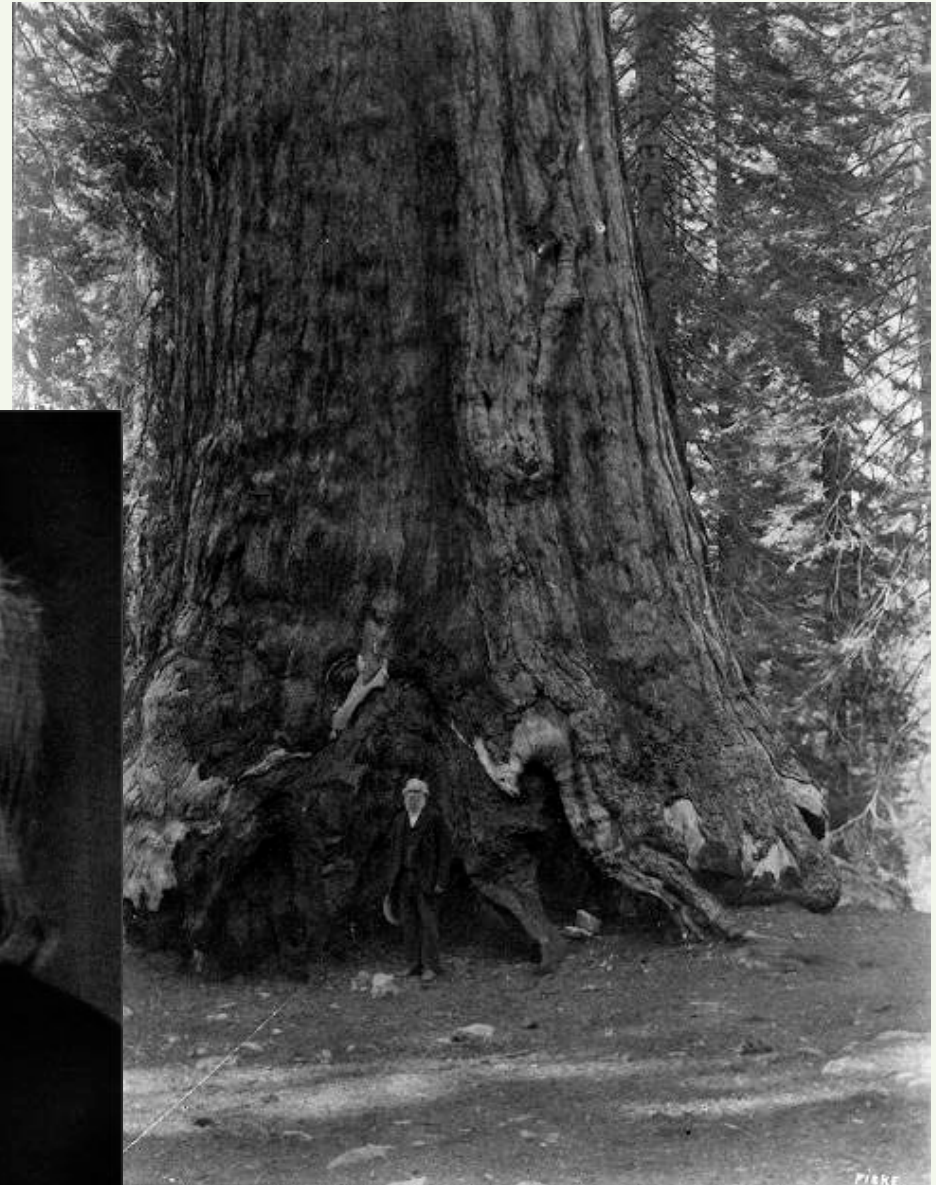
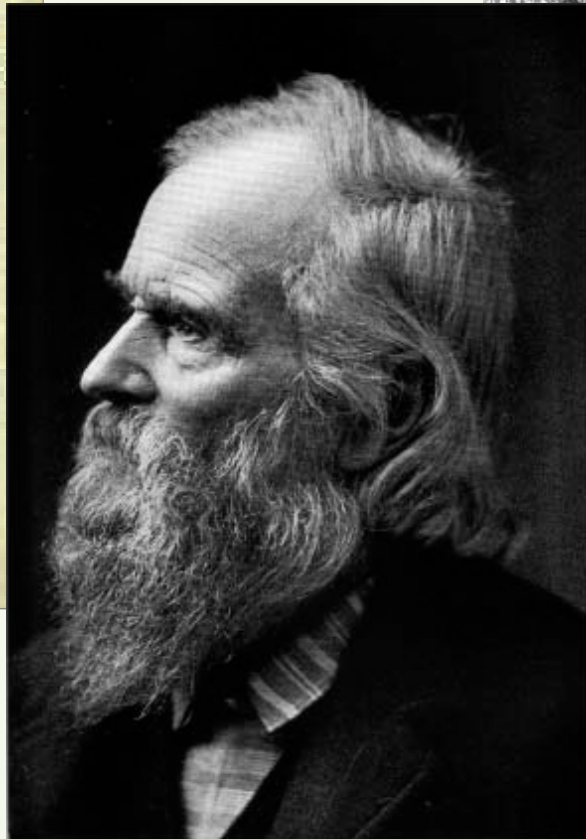
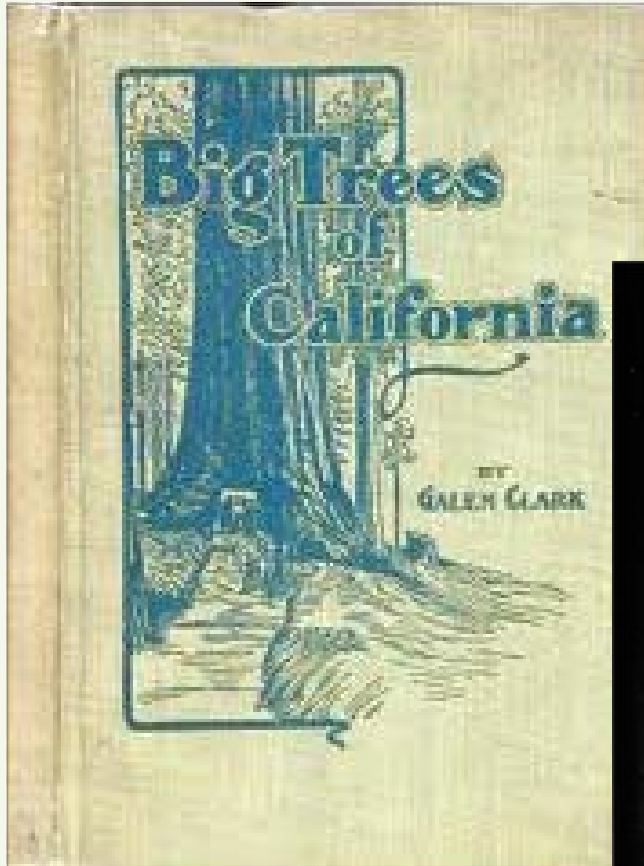
US Army soldiers in the Mariposa Grove, 1899

Yosemite National Park Mariposa Grove Restoration

National Park Service
U.S. Department of the Interior



Galen Clark as Guardian

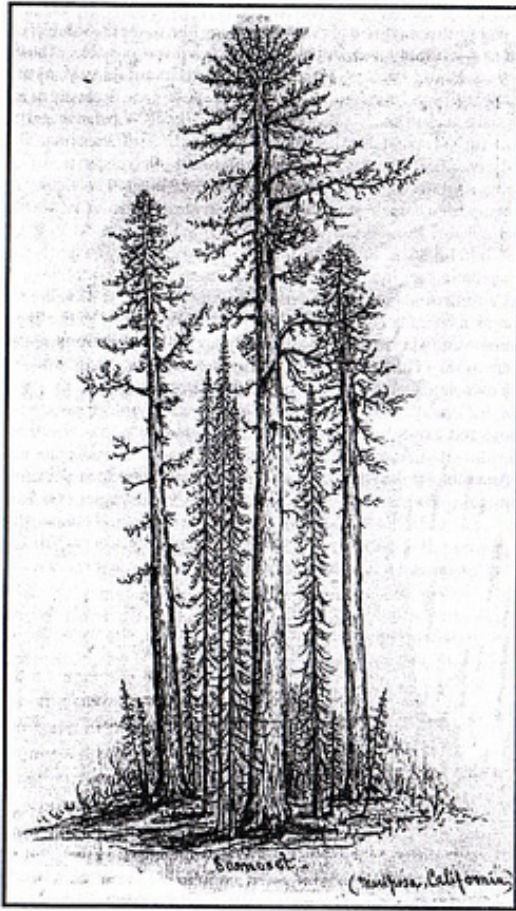


Yosemite National Park Mariposa Grove Restoration

National Park Service
U.S. Department of the Interior



The Naming of the Trees



John Muir's drawing of "Samoset," a sequoia that Emerson named while in Yosemite in May 1871
By permission of the Houghton Library, Harvard University

“At the request of Galen Clark, our host at Mariposa, & who is by State appointment the Protector of the trees, & who went with us to the Mammoth Groves, I selected a *Sequoia gigantea*, near Galen's Hospice, in the presence of our party, & named it Samoset, in memory of the first Indian ally of the Plymouth Colony, and I gave Mr. Clark directions to procure a tin plate, & have the inscription painted thereon in the usual form of the named trees;

Samoset

12 May

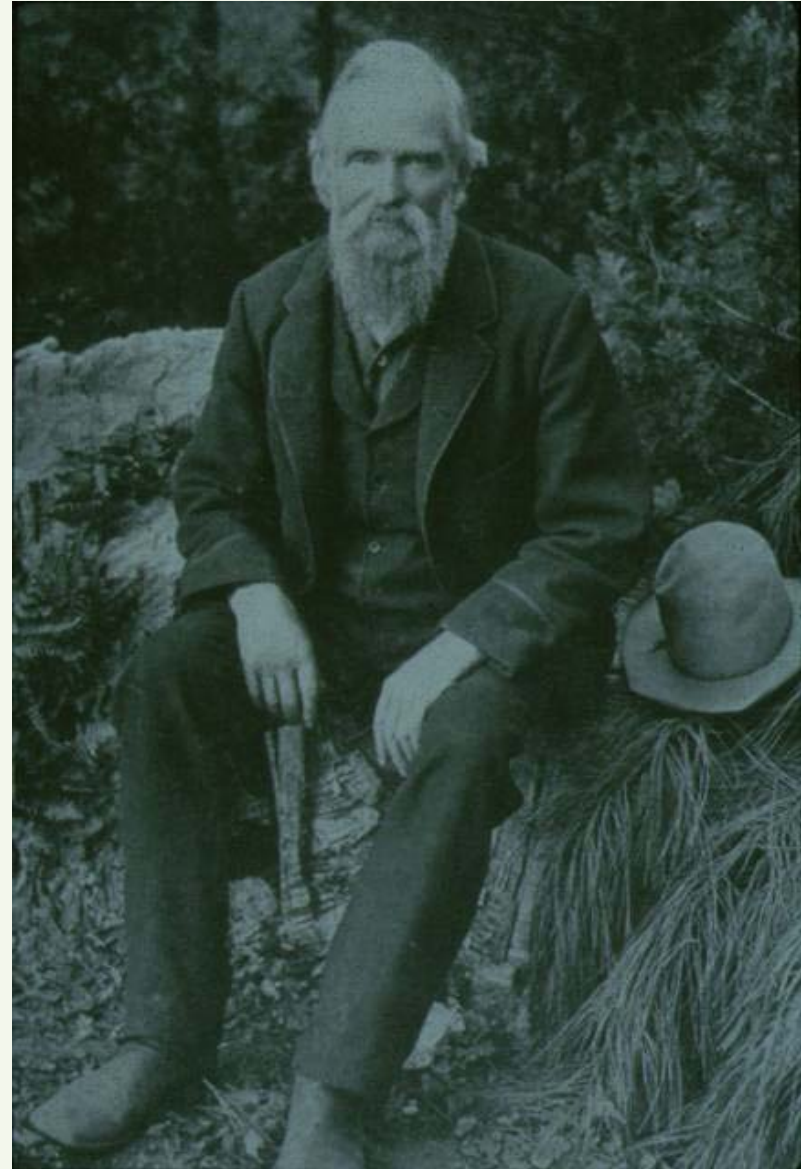
1871

& paid him its cost. The tree was a strong healthy one, girth at 2.5 feet from the ground, 50 feet.”

—*The Journals and Miscellaneous Notebooks of Ralph Waldo Emerson, Volume XVI (1866-1882), p. 239*

Yosemite National Park Mariposa Grove Restoration

National Park Service
U.S. Department of the Interior



Yosemite National Park Mariposa Grove Restoration

National Park Service
U.S. Department of the Interior



Early Cavalry Protection



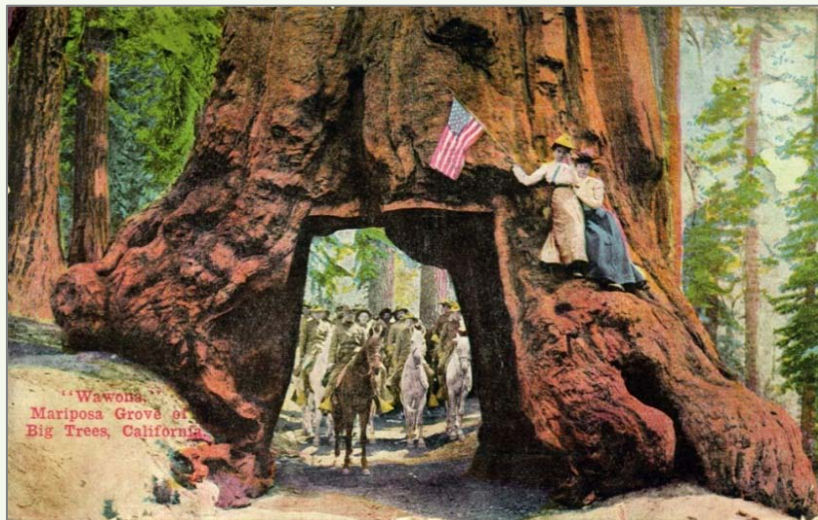
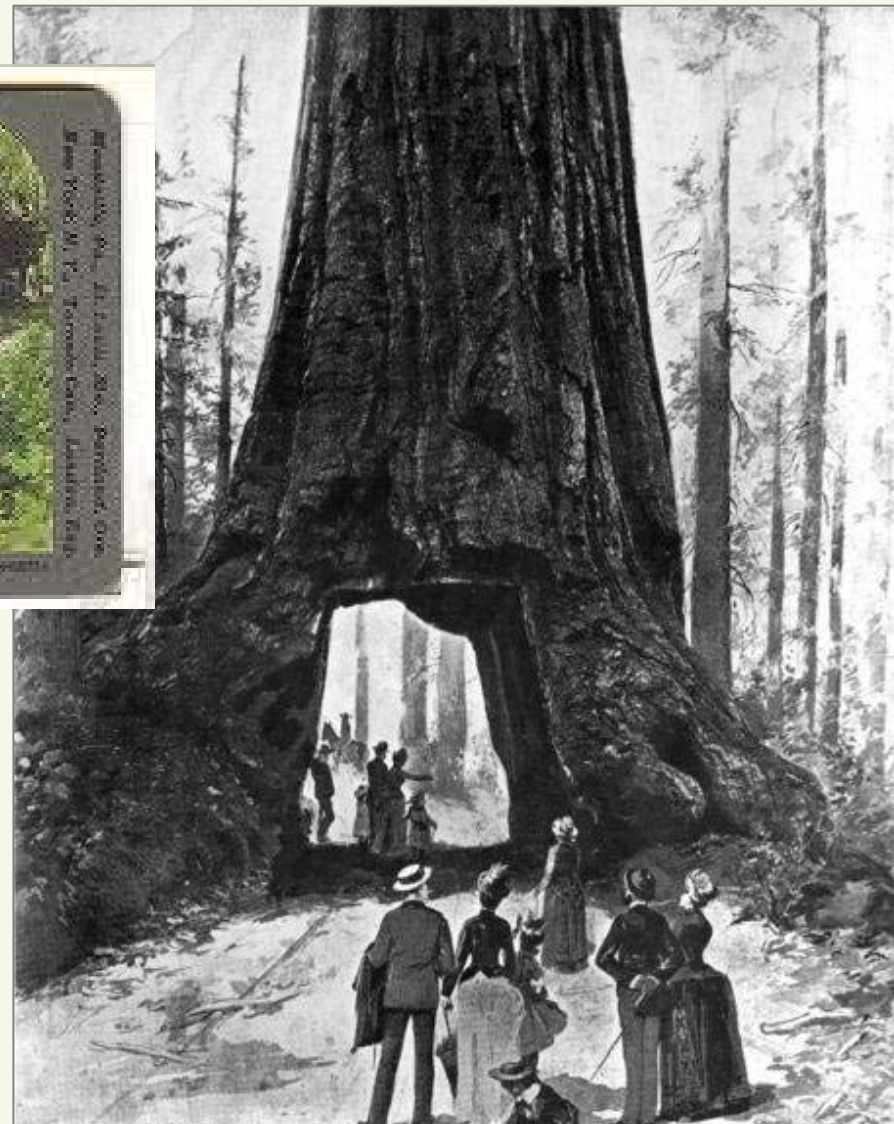
The Fallen Monarch provided a backdrop for the U.S. Army each summer from 1891 through 1914 when cavalrymen rode from San Francisco to Yosemite to protect the park.

Yosemite National Park Mariposa Grove Restoration

National Park Service
U.S. Department of the Interior



Early Visitation



Yosemite National Park Mariposa Grove Restoration

National Park Service
U.S. Department of the Interior



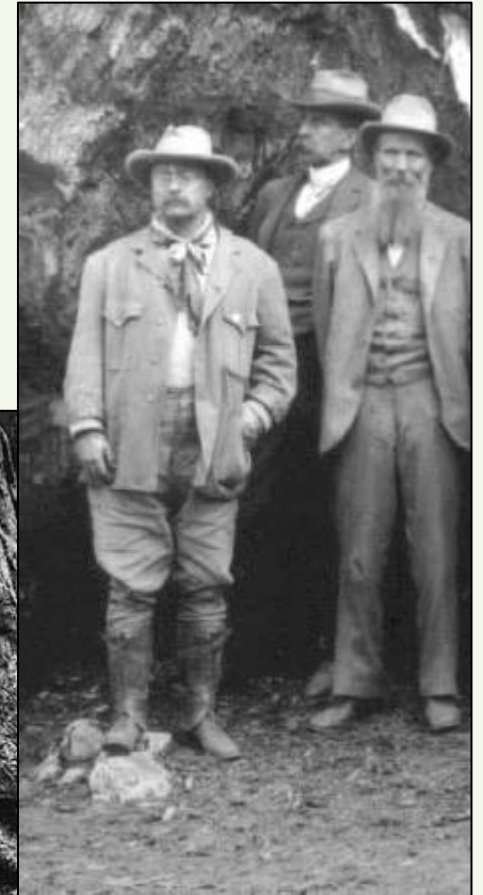
Teddy Roosevelt Visits the Grove as President



Roosevelt's party visited by stagecoach in 1903



Roosevelt at the Grizzly Giant



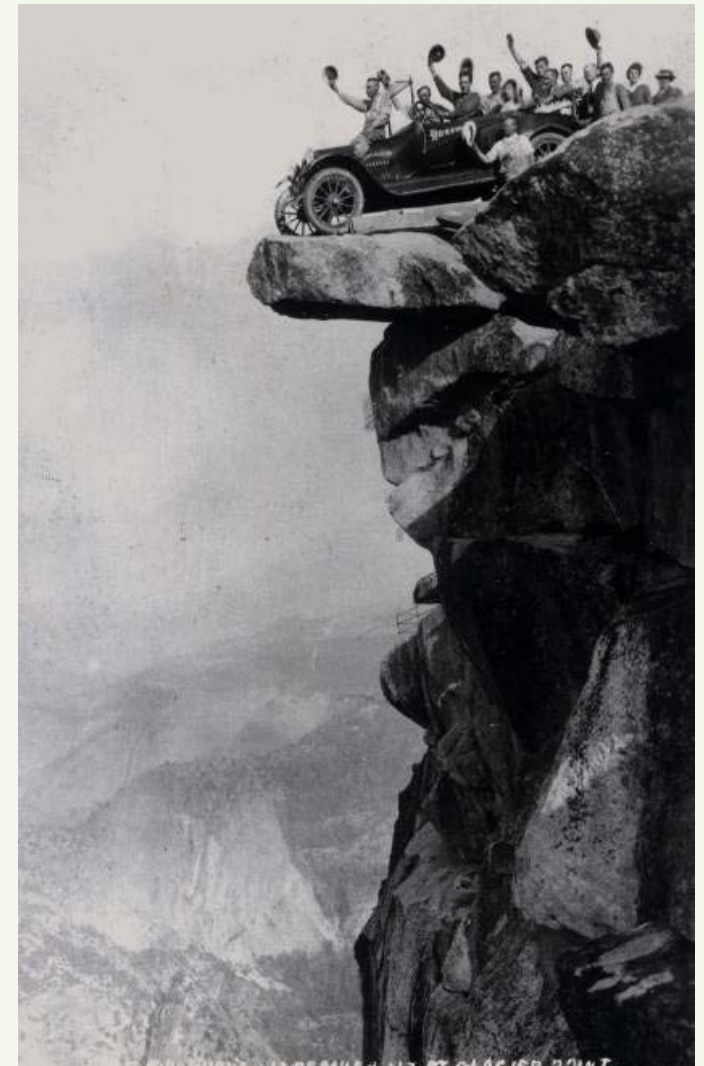
Roosevelt & Muir

Yosemite National Park Mariposa Grove Restoration

National Park Service
U.S. Department of the Interior



Accommodating Motor Vehicles in the Park

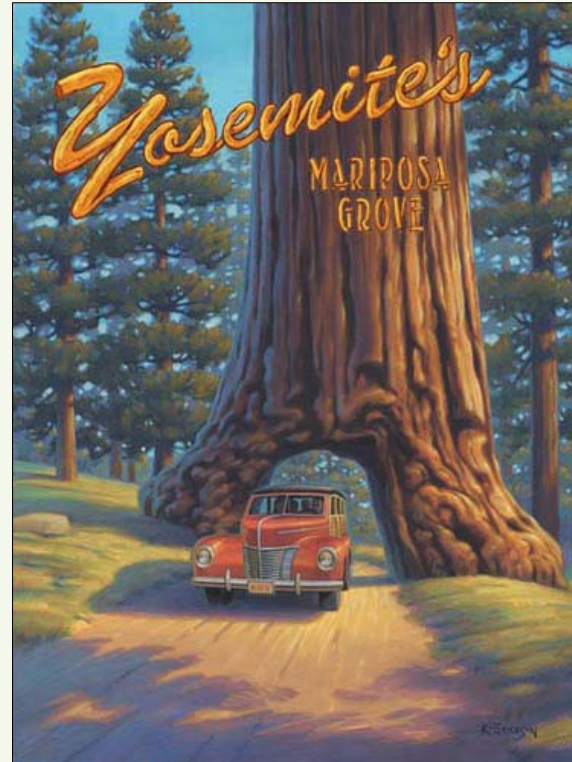


Yosemite National Park Mariposa Grove Restoration

National Park Service
U.S. Department of the Interior



Motor Vehicles and the Mariposa Grove



Yosemite National Park Mariposa Grove Restoration

National Park Service
U.S. Department of the Interior



Visitor Services in the Grove

Numerous facilities have been built in the Grove: Big Tree Lodge, campgrounds, a ranger station, the museum, various roads & trails, a gift shop, parking lots, restrooms and other visitor accommodations. Many have also been removed over time because of their impacts to the forest health.



Yosemite National Park Mariposa Grove Restoration

National Park Service
U.S. Department of the Interior



Current Infrastructure in the Mariposa Grove



Yosemite National Park Mariposa Grove Restoration

National Park Service
U.S. Department of the Interior



The Civilian Conservation Corps

The CCC worked throughout the park and made improvements to numerous sites. Within the Mariposa Grove, CCC work included clearing of fir trees and the creation of trails.

The dirt and gravel road through the Grove was paved in 1934.



CCC crews clearing drainage ditches in Wawona Meadow



CCC crews at work in the park between 1933-1942

Yosemite National Park Mariposa Grove Restoration

National Park Service
U.S. Department of the Interior



World War II and the Mariposa Grove

Ansel Adams documented several military visits to the Grove. The Wawona Tree remained a favorite photo location.



Yosemite National Park Mariposa Grove Restoration

National Park Service
U.S. Department of the Interior



Wawona Tunnel Tree



1962

Post -
1968



c. 1880s



Yosemite National Park Mariposa Grove Restoration

National Park Service
U.S. Department of the Interior



A Changing Understanding of Grove Health

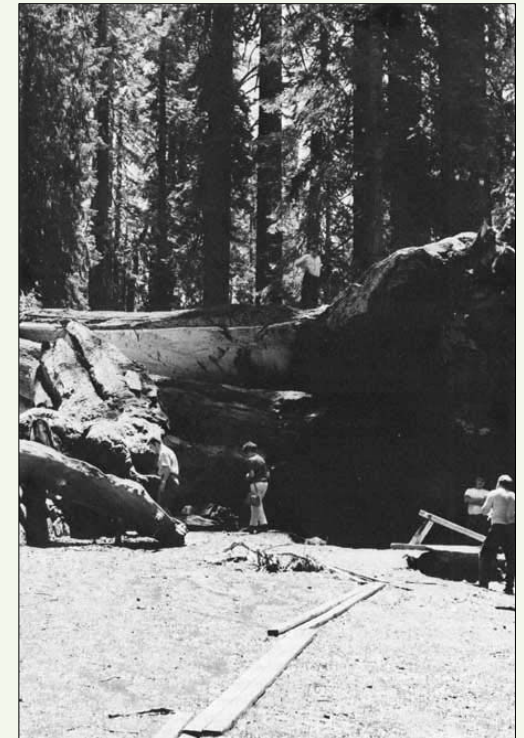
Beginning in the 1930s, managers began to take measures to protect the trees.



Visitors used to be able to drive to and gather around the base of the Grizzly Giant



The road by the Grizzly Giant was eventually relocated away from the tree for the protection of its roots



The Wawona Tunnel Tree fell after a particularly heavy snowfall in 1969

Yosemite National Park Mariposa Grove Restoration

National Park Service
U.S. Department of the Interior



Vehicles in the Grove

After much discussion, public vehicle access to the Grove ended in 1970:

- 1) “to serve the best interest of the public in experiencing enjoyment and fulfillment of the Grove,”
- 2) if offered “the best and widest opportunities for providing significant interpretive services,” and
- 3) it ensured the “preservation of the specimen sequoias, as well as the unique ecology associate with the sequoia community.”



Yosemite National Park Mariposa Grove Restoration

National Park Service
U.S. Department of the Interior



Prescribed Fires

In 1971, the park re-introduced fire within the Grove allowing sequoia seeds to germinate and grow, ensuring generations of sequoias living into the future.



Yosemite National Park Mariposa Grove Restoration

National Park Service
U.S. Department of the Interior



Prescribed Fire Over Time



2000

1970

1890

Yosemite National Park Mariposa Grove Restoration

National Park Service
U.S. Department of the Interior



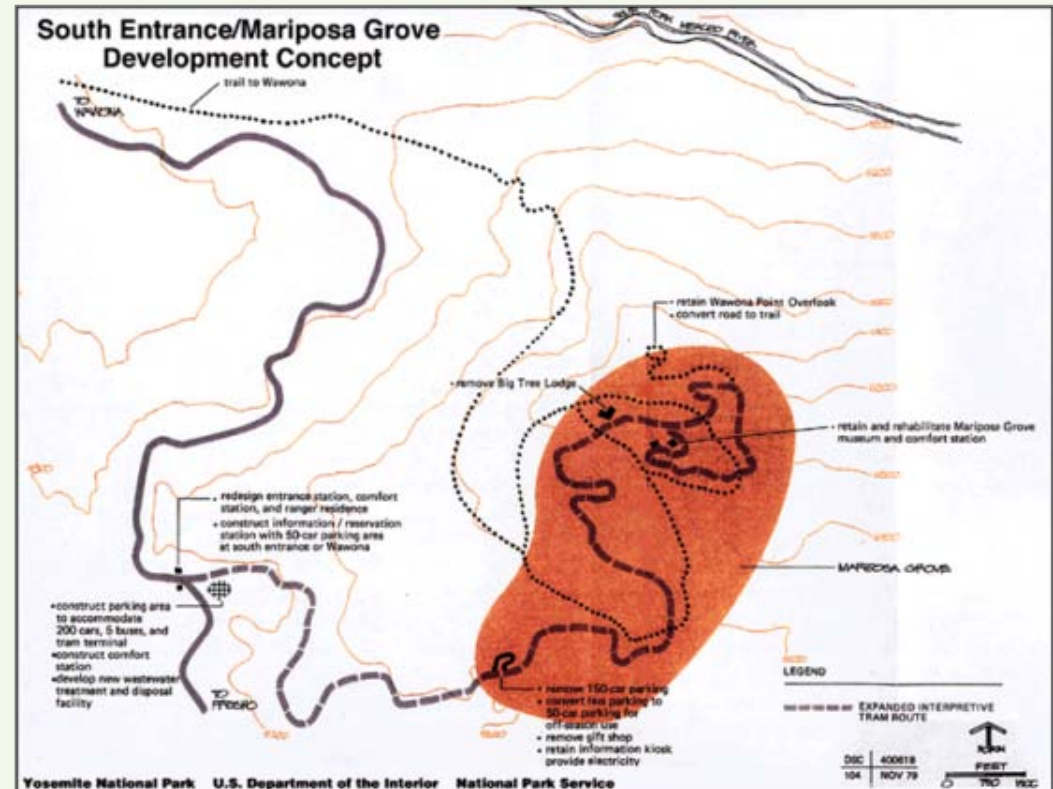
General Management Plan Goals (NPS, 1980)

Mariposa Grove

- Remove parking from the lower grove
- Provide only visitor facilities consistent with preservation of the unique ecosystem
- Provide off-season parking at the Grove

South Entrance Station

- Provide park orientation/information
- Provide staging facilities for the Mariposa Grove
- Redesign the South Entrance Station
- Provide adequate road to the Grove for bus access



GMP Concept Map

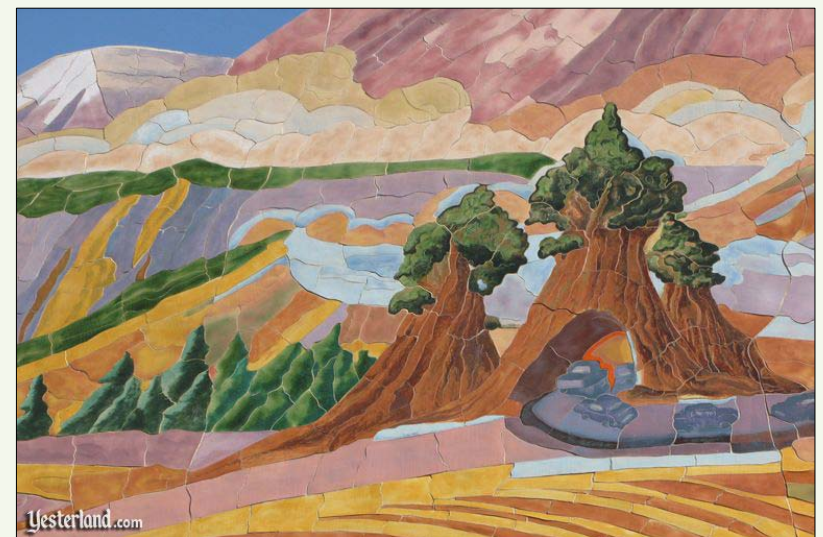
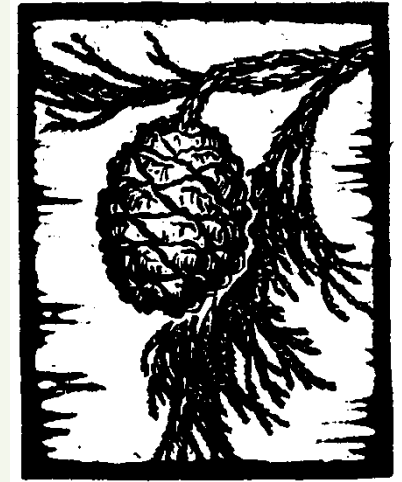
Yosemite National Park Mariposa Grove Restoration

National Park Service
U.S. Department of the Interior



Giant Sequoias Continue to Inspire

Artists have been inspired by the giant sequoias since visitors first came to the site. This project will help ensure that giant sequoias continue to inspire visitors for generations to come.



Yosemite National Park Mariposa Grove Restoration

National Park Service
U.S. Department of the Interior



Yosemite National Park Mariposa Grove Restoration

National Park Service
U.S. Department of the Interior



Public Scoping is going on now... Please Get Involved!

*Site Visit: October 14th
at 9:30-11:00am
at the Mariposa Grove
(meet at the gift shop)*



Yosemite National Park Mariposa Grove Restoration

National Park Service
U.S. Department of the Interior



What should the Grove look like in 150 years?

