



Merced Wild and Scenic River:

Cultural Resources & Historic Properties

David Humphrey
Park Historical Landscape Architect
Yosemite National Park



Cultural Resources & Historic Properties

Overview

- *Context*
- *Legislative Framework*
- *Case Studies*

Yosemite National Park

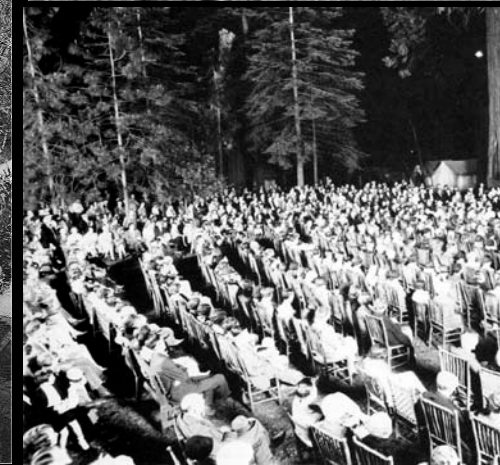
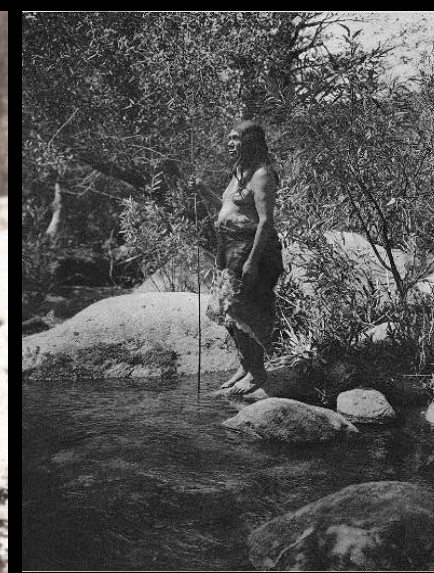
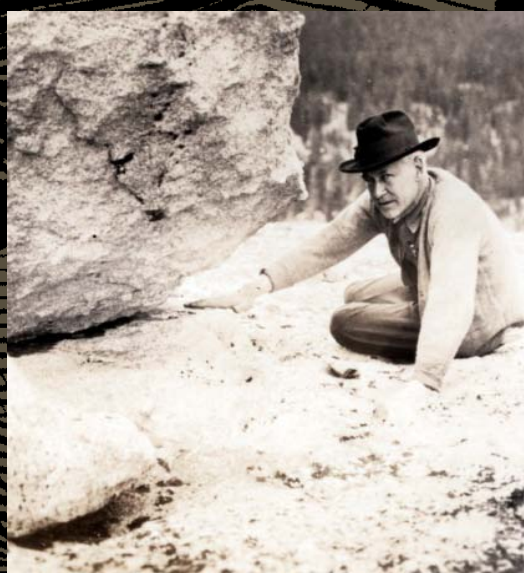
National Park Service
U.S. Department of Interior



Tunnel View

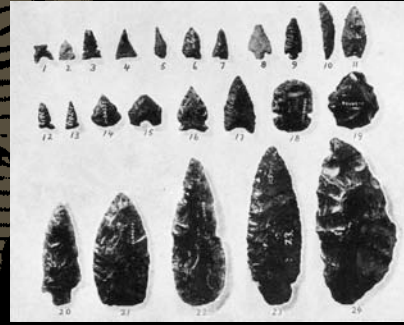
Yosemite National Park

National Park Service
U.S. Department of Interior



Yosemite National Park

National Park Service
U.S. Department of Interior





National Park Service Mission:

- 1916 Organic Act

“...purpose is to conserve the scenery and the natural and historic objects and the wild life therein and to provide for the enjoyment of the same in a manner and by such means as will leave them unimpaired for the enjoyment of future generations.”

- 2002 Restatement

“...preserves unimpaired the natural and cultural resources and values of the national park system for the enjoyment, education, and inspiration of this and future generations.

The Park Service cooperates with partners to extend the benefits of natural and cultural resources conservation and outdoor recreation throughout this country and the world.”



National Park Service Cultural Resources Management Director's Order 28:

- *Research*
- *Planning*
- *Stewardship*





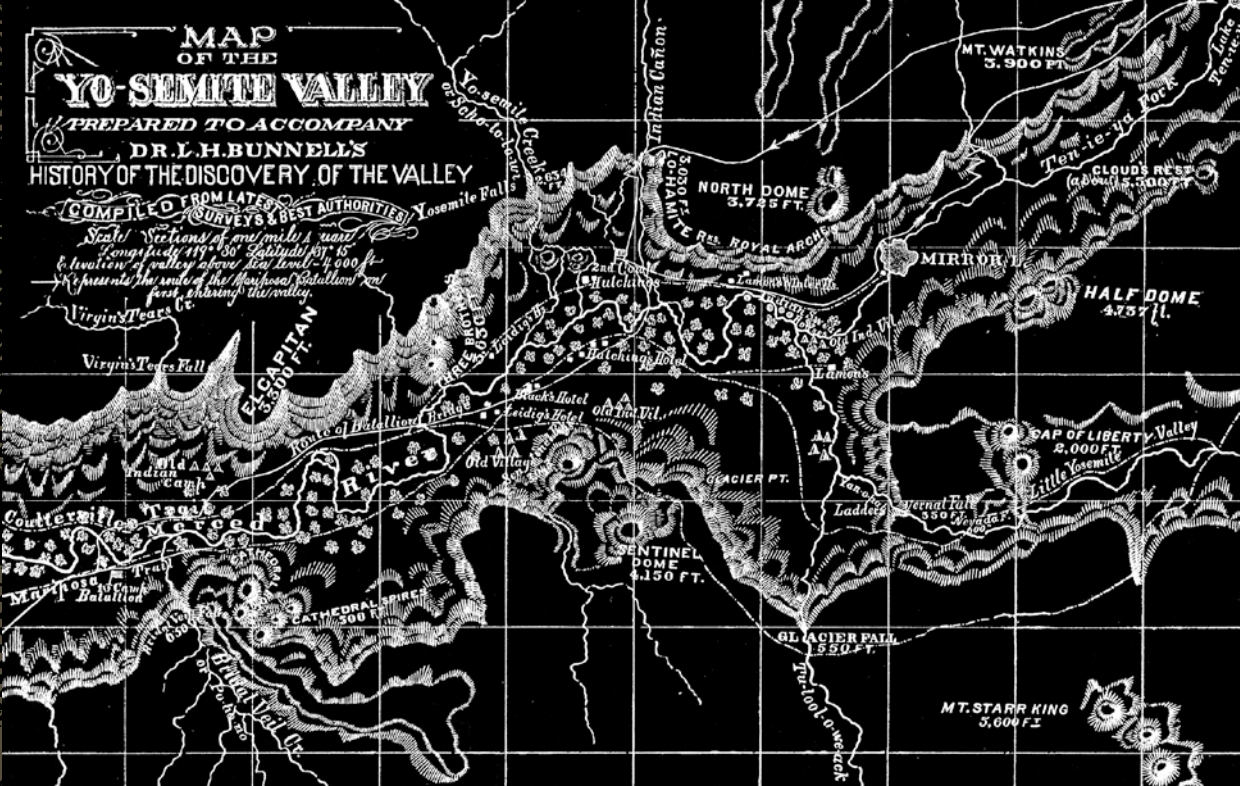
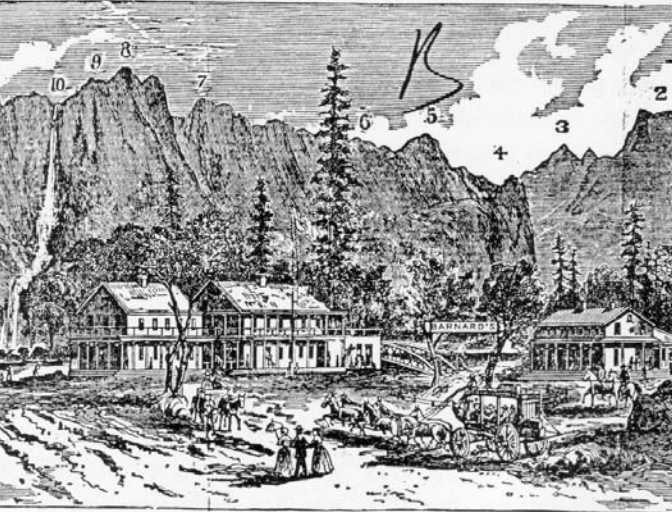
Legislative Framework :

- 1864 - Yosemite Valley and Mariposa Big Tree Grove Grant.
- 1890 – Yosemite National Park.
- 1906 – Antiquities Act.
- 1933 - Executive Order transfers 63 national monuments & military sites from Forest Service and War Dept. to National Park Service.
- 1935 - Historic Sites Act (finalizes transfer).
- 1966 – National Historic Preservation Act.
- 1979 – Archeological Resources Preservation Act.
- 2011 – 393 areas of diverse management types



National Historic Preservation Act 1966

BARNARD'S HOTEL AND COTTAGES, YOSEMITE V





Rangers' Club, 1920

National Historic Landmarks



The Ahwahnee, 1927

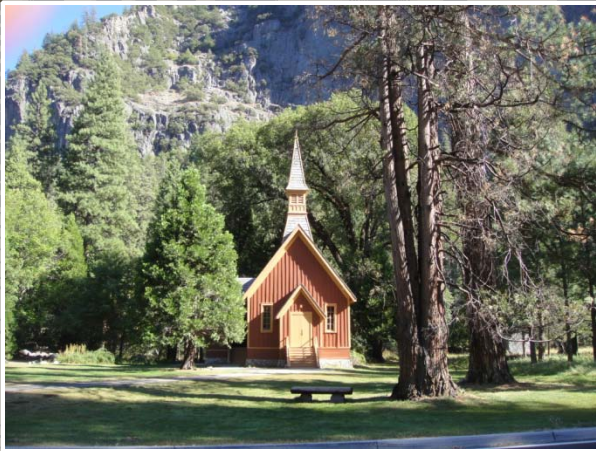
The National Register of Historic Places



Wawona Hotel, circa 1876

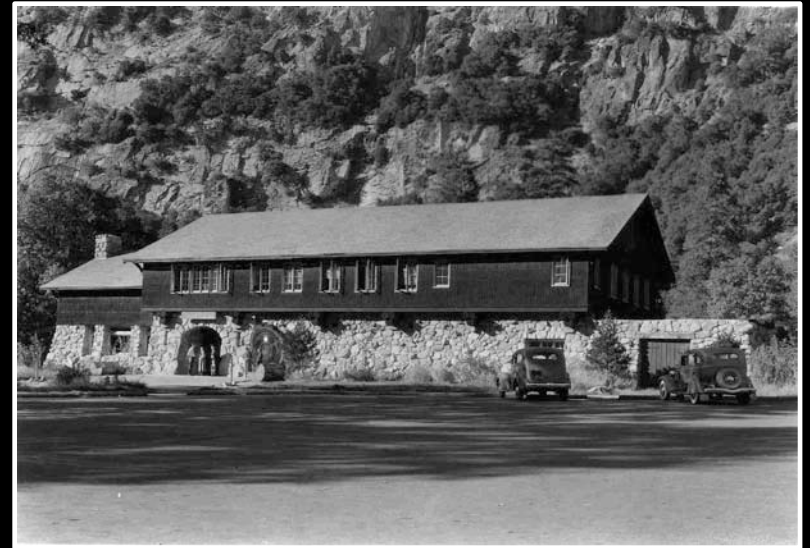


The Hierarchy of Levels of Designation for Historic Properties



The Chapel in Yosemite Valley

Individually eligible for listing on *The National Register of Historic Places* at the national, state or local level



Yosemite Museum

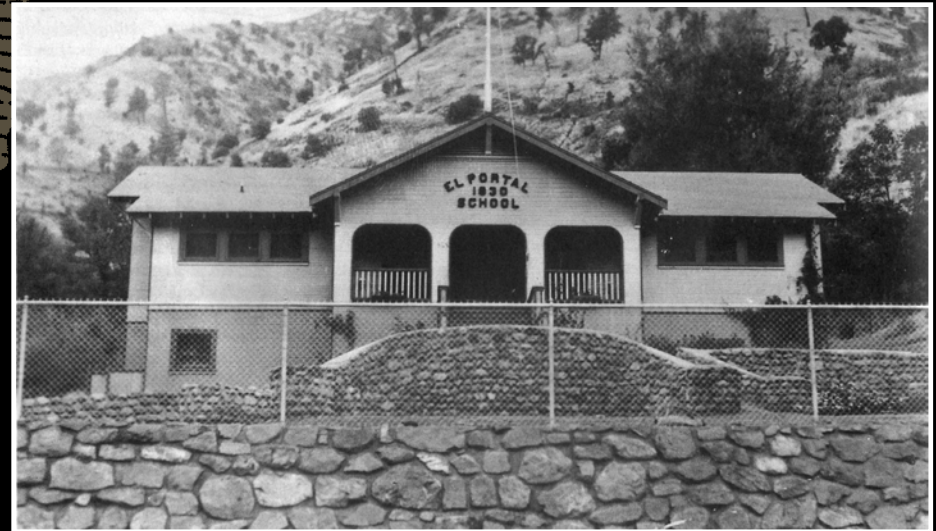
Eligible for listing on the *National Register of Historic Places* as a contributor to a district at the national, state or local level



Criteria for listing on the National Register of Historic Properties



Camp 4 in Yosemite Valley,
listed 2003



El Portal School, listed 2011



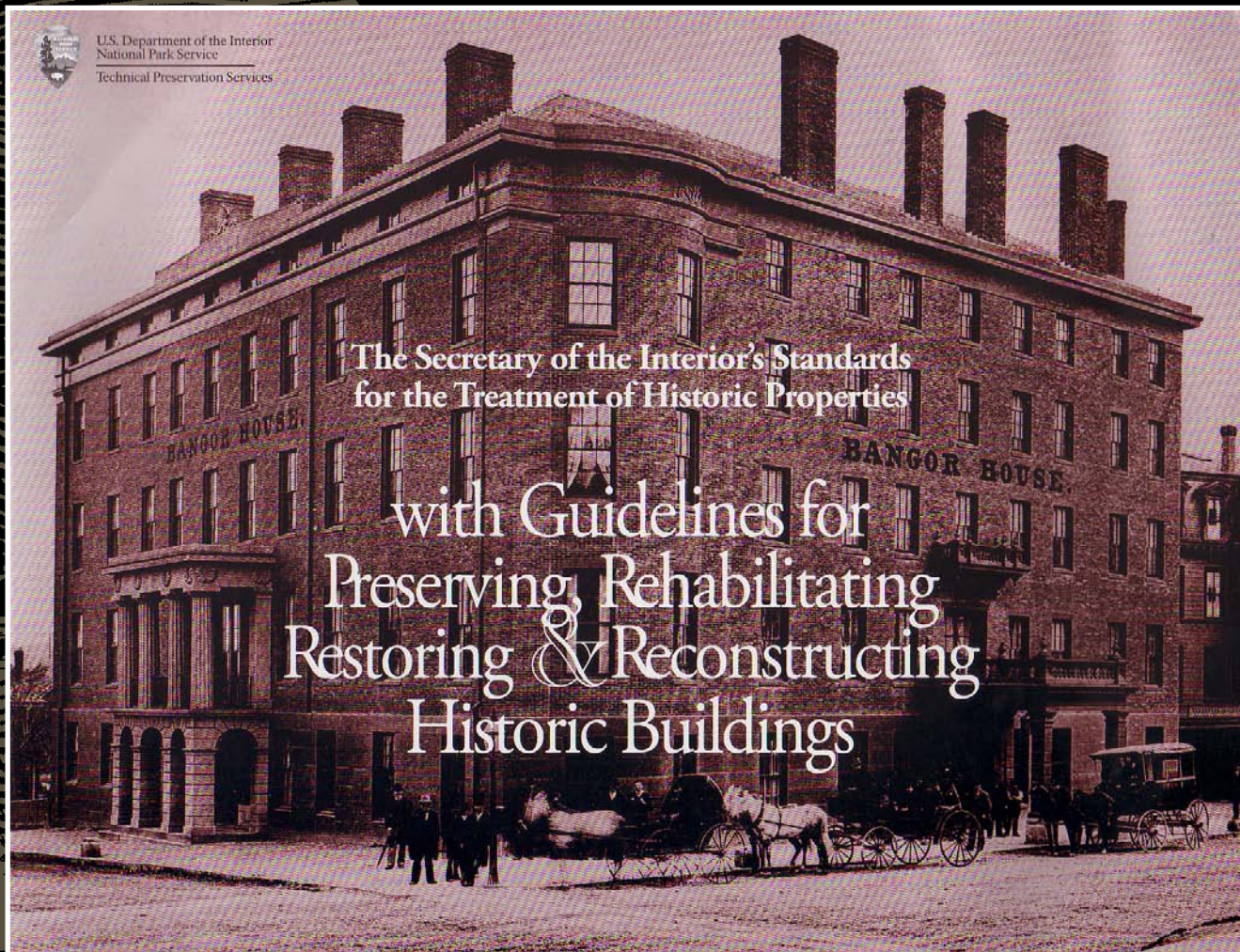
Section 106 of the National Historic Preservation Act

Is a four step process :

- Step 1 - Initiate Section 106 process
- Step 2 – Identify Historic Properties
- Step 3 – Assess for Possible Adverse Effects
- Step 4 – If necessary, Resolve Adverse Effects



The Secretary of the Interior's Standards





The Secretary of the Interior's Four Treatment Approaches (with Standards and Guidelines developed for each):

LEVEL OF INTERVENTION TO
THE HISTORIC FABRIC

HIGHEST LEVEL
OF INTERVENTION



Reconstruction

Rehabilitation

Restoration

Preservation

LOWEST LEVEL OF
INTERVENTION





American Indian Consultation in the NPS

The NHPA requires consultation with any Indian tribe that attaches religious and cultural significance to *historic properties*

NPS Management Policies extend this requirement to include

- Consultation with traditionally associated peoples about the protection, management, study & interpretation of cultural and natural resources with ethnographic meaning for those groups
- Ethnographic resources are **not** always historic properties



American Indian Consultation at Yosemite NP

Yosemite National Park consults with

- Five federally-recognized tribes
- Two federally non-recognized groups
- Several interested parties

Yosemite maintains government-to-government relationships with federally-recognized tribal governments

Tribal partners share a commitment to stewardship of the land and resources in Yosemite



Questions/Discussion

