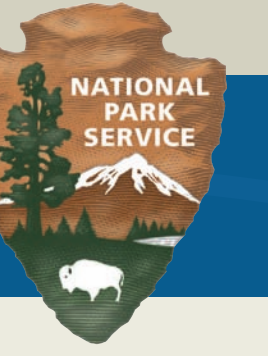


# Yosemite National Park

MERCED RIVER PLAN...PROVIDING ACCESS AND PROTECTING RESOURCES

National Park Service  
U.S. Department of the Interior

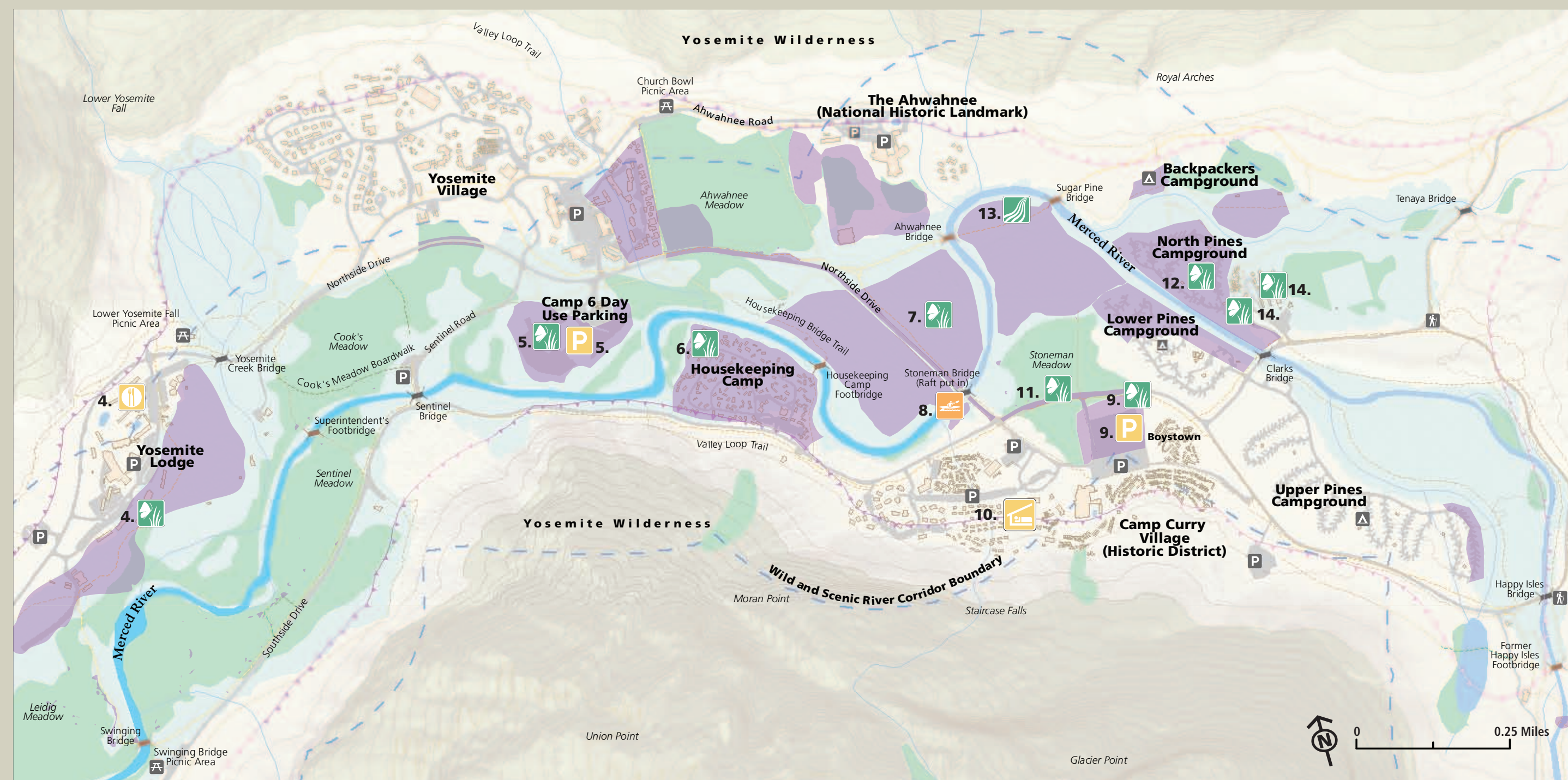


## CONCEPT 1: SELF-RELIANT EXPERIENCE AND EXTENSIVE FLOODPLAIN RESTORATION

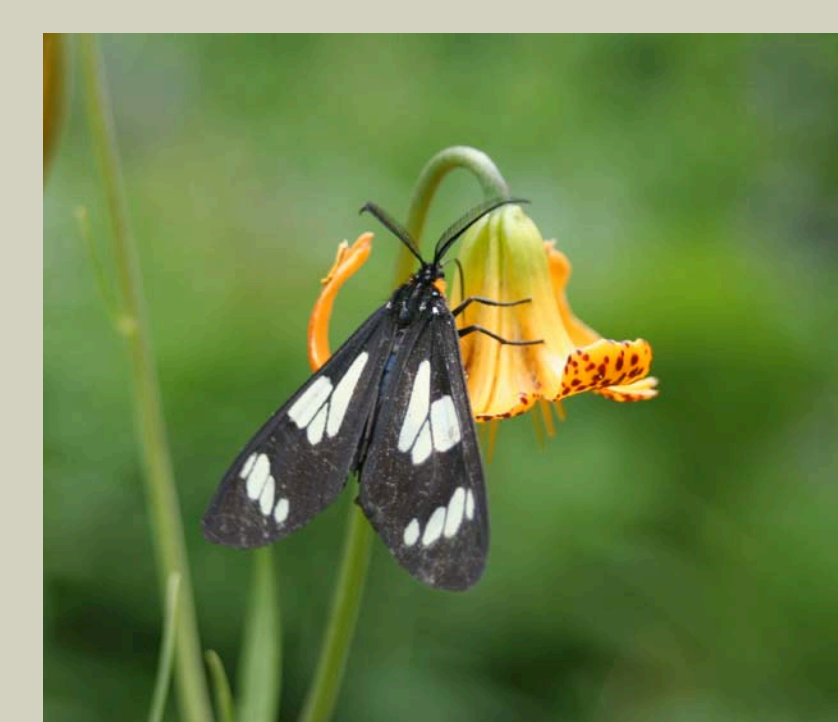
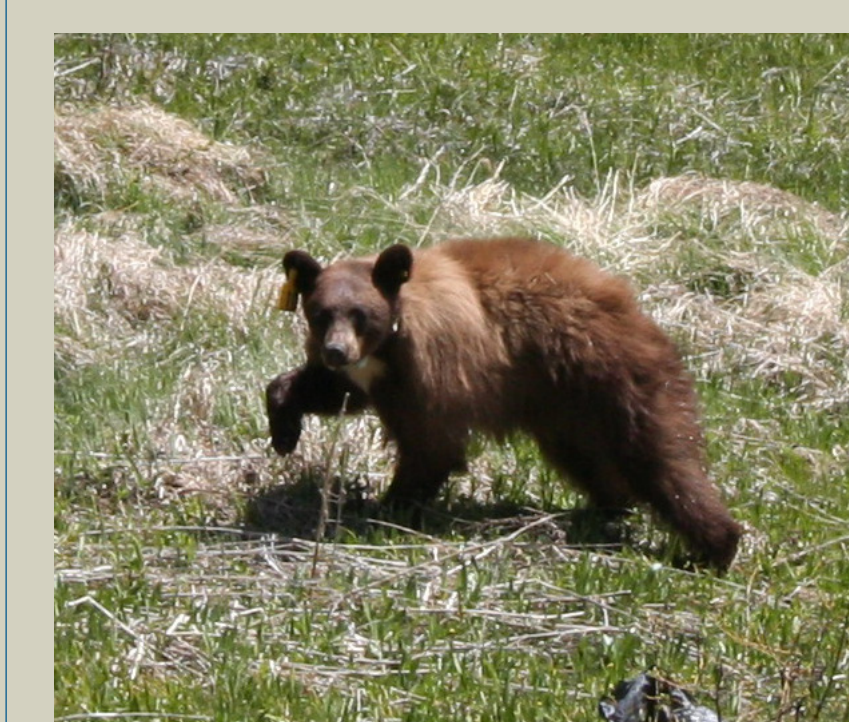
### RIVER VALUES AND ENHANCEMENT

Major restoration within the 100-year floodplain

- Preserve exceptional water quality throughout the river corridor
- Strategically remove roads and three bridges to improve free-flowing conditions
- Restore 336 acres to natural conditions within the river corridor
- Remove campsites, informal trails, and non-essential roads from culturally sensitive areas



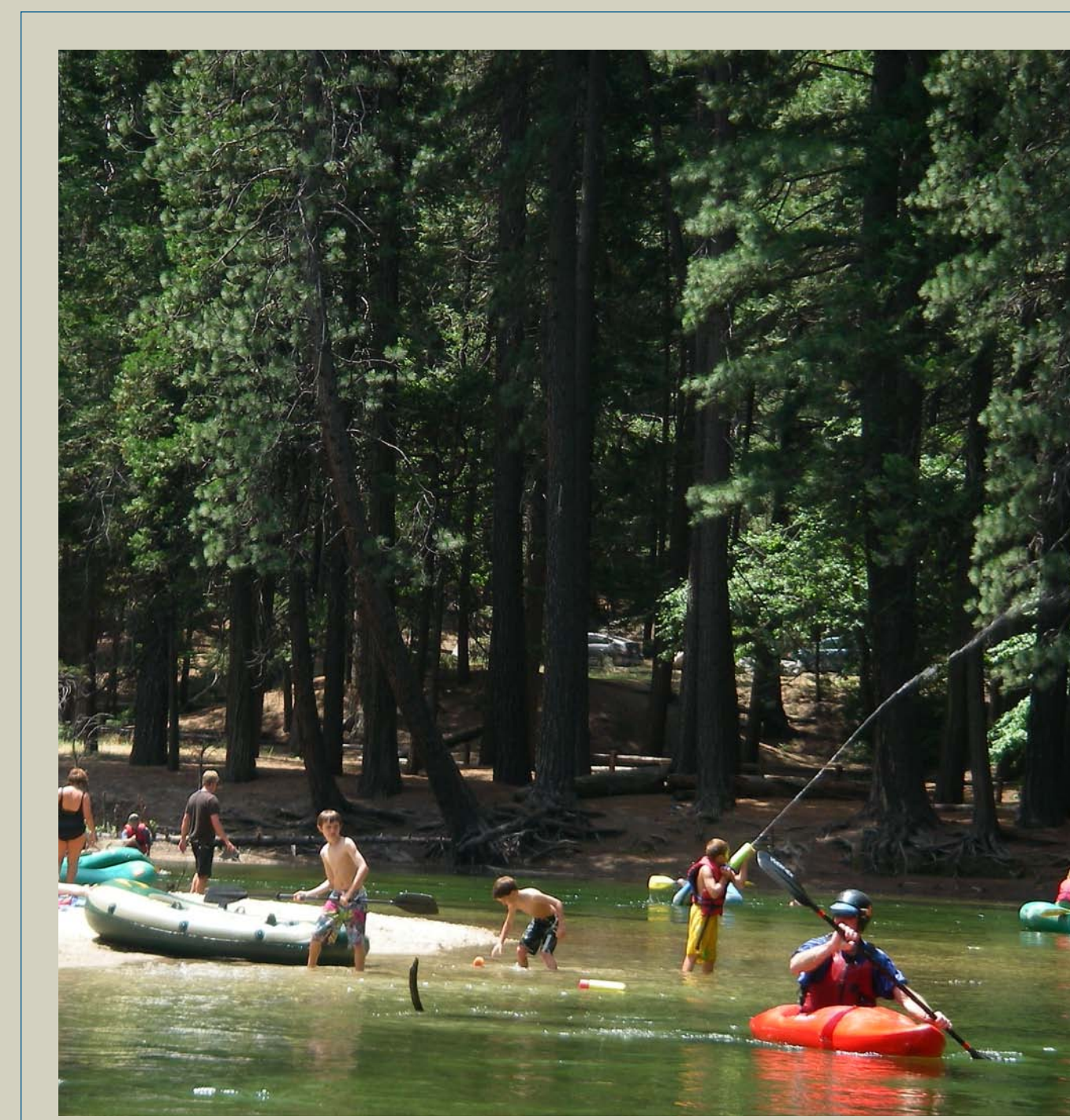
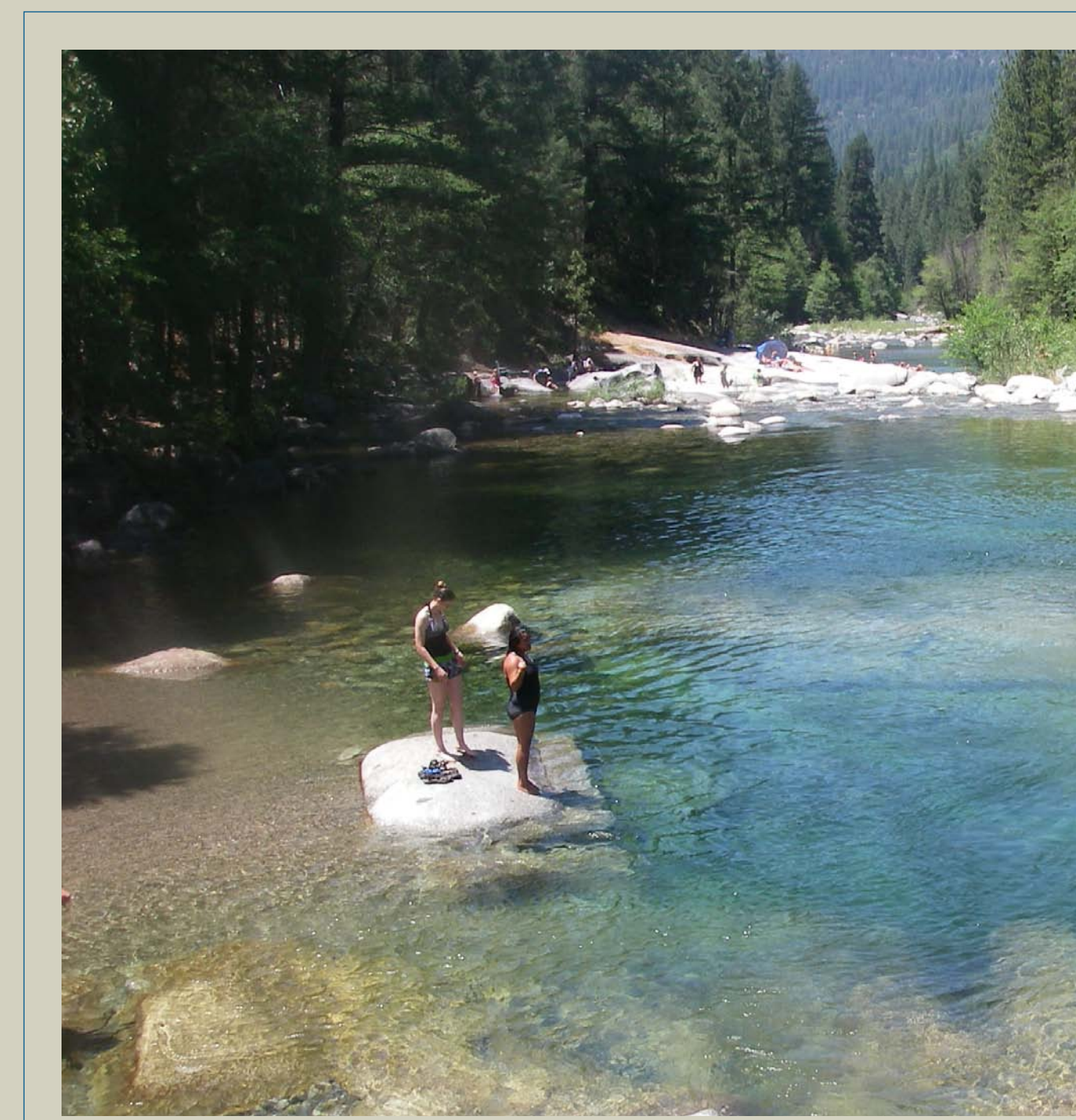
Enhanced riparian, meadow, and woodland areas would provide habitat for a variety of wildlife, including bears, butterflies, and various amphibians.



### PUBLIC ACCESS AND USER CAPACITY

Accommodates lowest visitor use levels

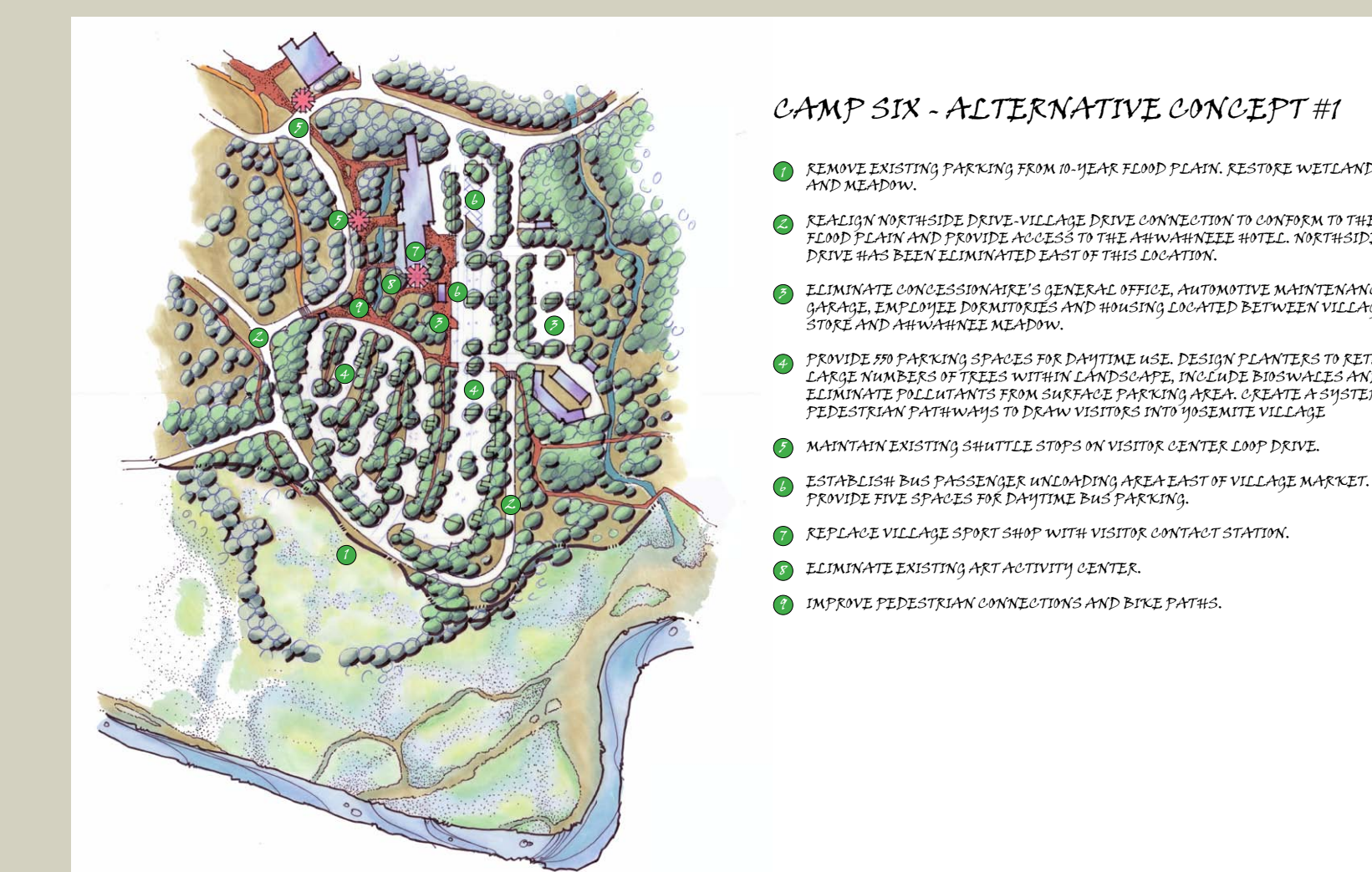
- Yosemite Valley Peak Daily Visitation: 14,100 people (31% decrease)
  - ❖ Day-use Peak Visitation: 10,200 people (30% decrease)
  - ❖ Overnight Peak Visitation: 3,900 people (33% decrease)
- Management tools
  - ❖ Re-design parking, trails, and viewing areas
  - ❖ Require day-use permits and reservation system during peak summer season
  - ❖ Check entry permits at park entrance stations
  - ❖ Use Intelligent Transportation Systems to inform visitors of real-time traffic conditions
- Eliminate commercial raft rentals and allow privately-owned boats on stretches of the river within all segments except in Gorge and Wilderness segments. Designate formal river access sites and redirect use to more stable river access points.



### LAND USE

Significant reduction in facilities and services

- Reduce or eliminate commercial services, such as:
  - ❖ Unnecessary or duplicative retail
  - ❖ Wawona and Curry Village stables
  - ❖ All Yosemite Lodge units
  - ❖ Curry Village ice rink
  - ❖ Raft and bike rental
  - ❖ Housekeeping Camp
  - ❖ Wawona Golf Course and Shop
- Parking capacities for day and overnight visitors, residents, and administrative personnel
  - ❖ Yosemite Valley Parking: ~4,000 spaces (27% decrease)
  - ❖ Wawona Parking: ~630 spaces (11% decrease)
  - ❖ El Portal Parking: ~1,600 spaces (17% increase)
- Campsites relocated from sensitive areas to more resilient locations
  - ❖ Yosemite Valley Camping: ~460 sites (2% decrease)
  - ❖ Wawona Camping: ~60 sites (41% decrease)



Preliminary design for day-use parking area at Camp 6