

**Figure 2.2-10**  
**Recreational ORV - River Segments 5 and 7.**  
**South Fork Merced River Above Wawona and Wawona**  
**Wild and Recreational WSR Corridors**

- |  |                 |              |
|--|-----------------|--------------|
| Recreational WSR Corridor Classification | Road bridge     | Trailhead    |
| Yosemite National Park Boundary          | Footbridge      | Road         |
| Building                                 | Historic bridge | Stream/River |
| Campground                               | Golfcourse      | Trail        |



National Park Service U.S. Department of the Interior

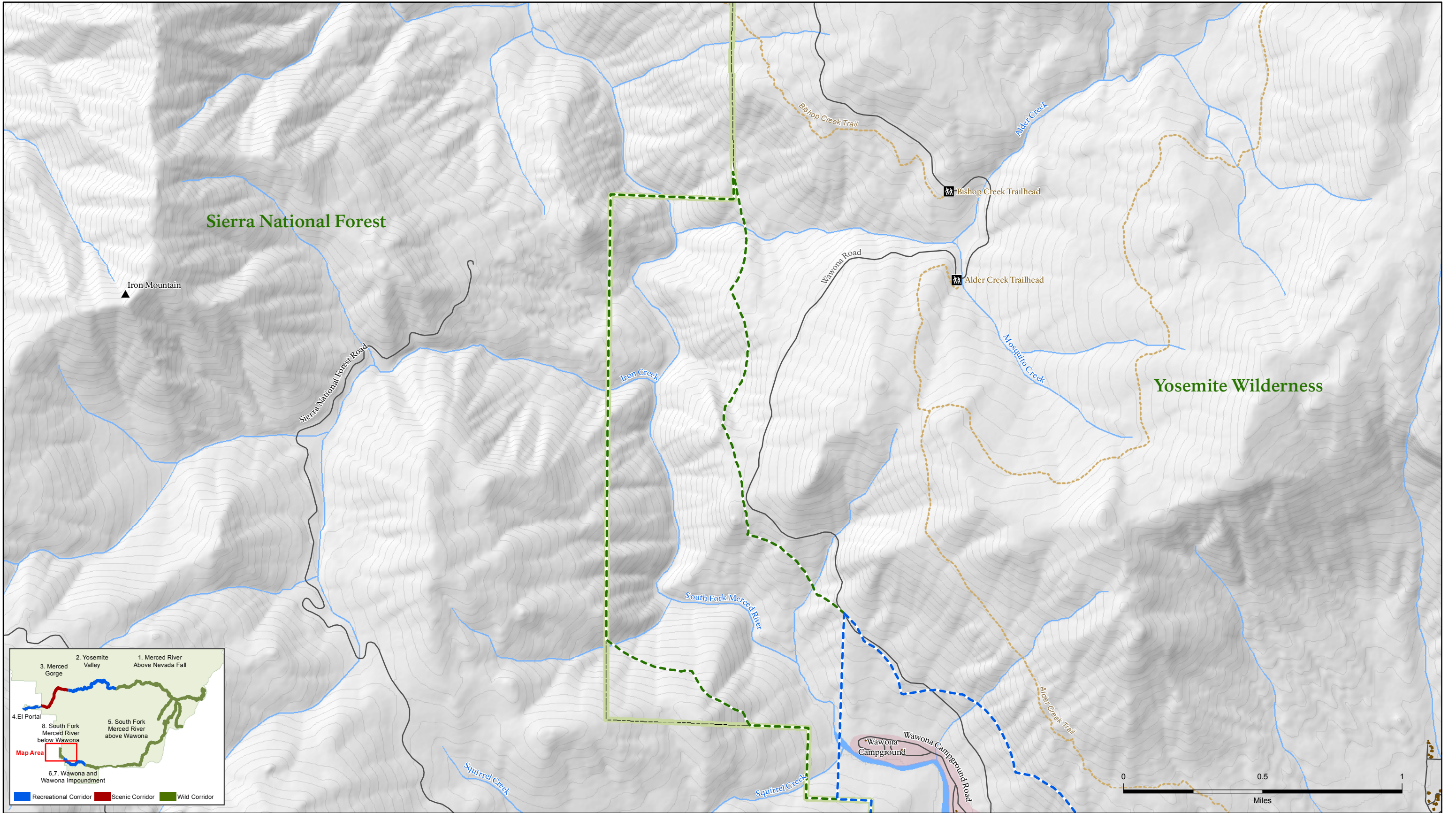
Produced by: **Yosemite Planning Division**

Projection: North American Datum 1983, UTM Zone 10

Date: 2/25/11

File:





**Figure 2.2-11**  
**Recreational ORV - River Segment 8.**  
**South Fork Merced River Below Wawona**  
**Wild WSR Corridor**

- Recreational WSR Corridor Classification
- Wild WSR Corridor Classification
- Wilderness Boundary
- Building
- Campground
- Trailhead
- Landmark
- Road
- Stream/River
- Trail



National Park Service U.S. Department of the Interior

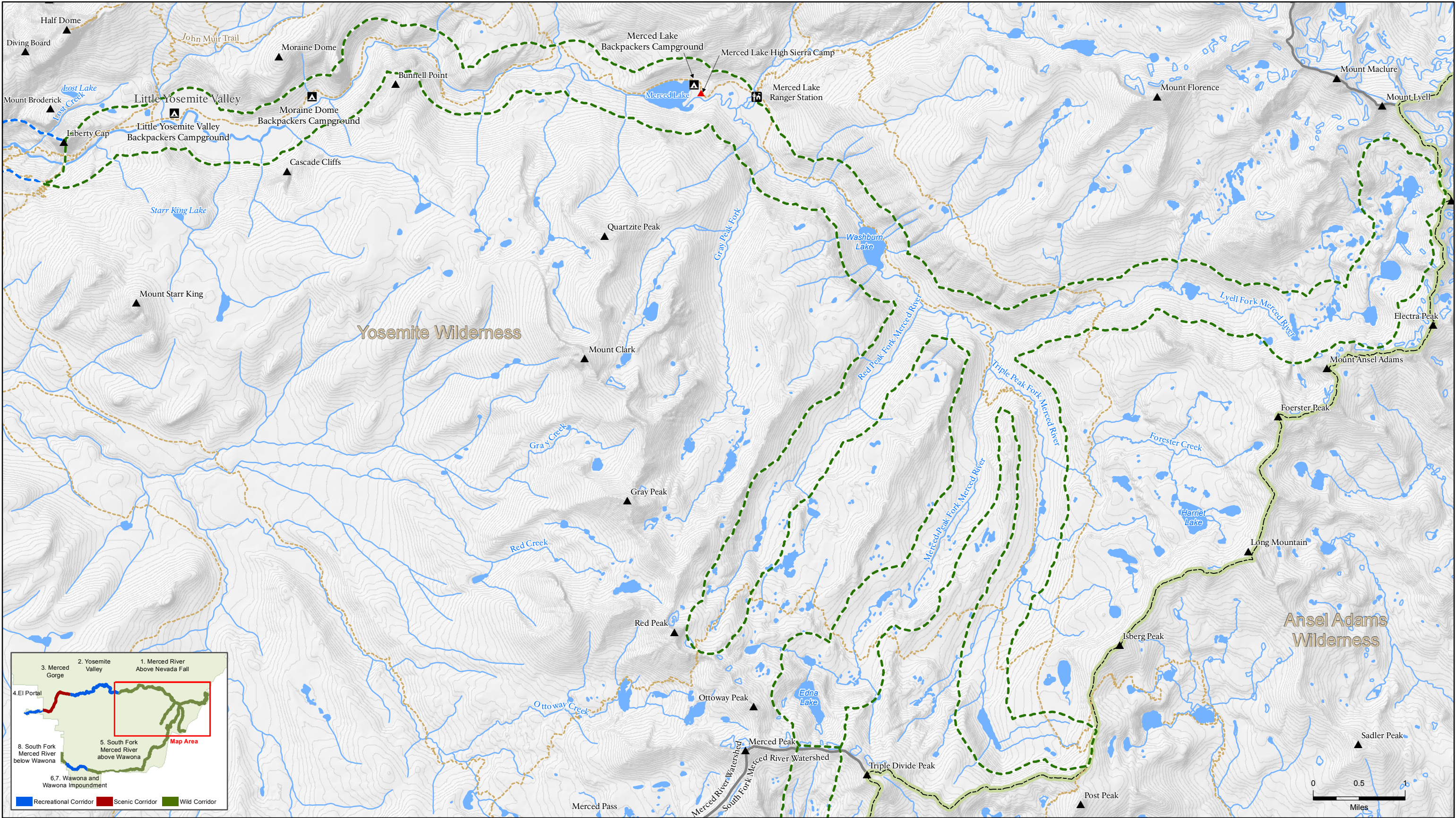
Produced by: **Yosemite Planning Division**

Projection: North American Datum 1983, UTM Zone 10

Date: 1/5/11

File:





**Figure 2.2-2**  
**Recreational ORV - River Segment 1.**  
**Merced River Above Nevada Fall**  
**Wild WSR Corridor**

- |                                  |                  |              |
|----------------------------------|------------------|--------------|
| Wild WSR Corridor Classification | Landmark         | Trail        |
| Recreational                     | High Sierra Camp | Stream/River |
| Watershed Boundary               | Campground       |              |
| Yosemite National Park Boundary  | Ranger Station   |              |
| Lakes                            | Campground       |              |



National Park Service U.S. Department of the Interior

Produced by: **Yosemite Planning Division**

Projection: North American Datum 1983, UTM Zone 10

Date: 2/25/11

File:



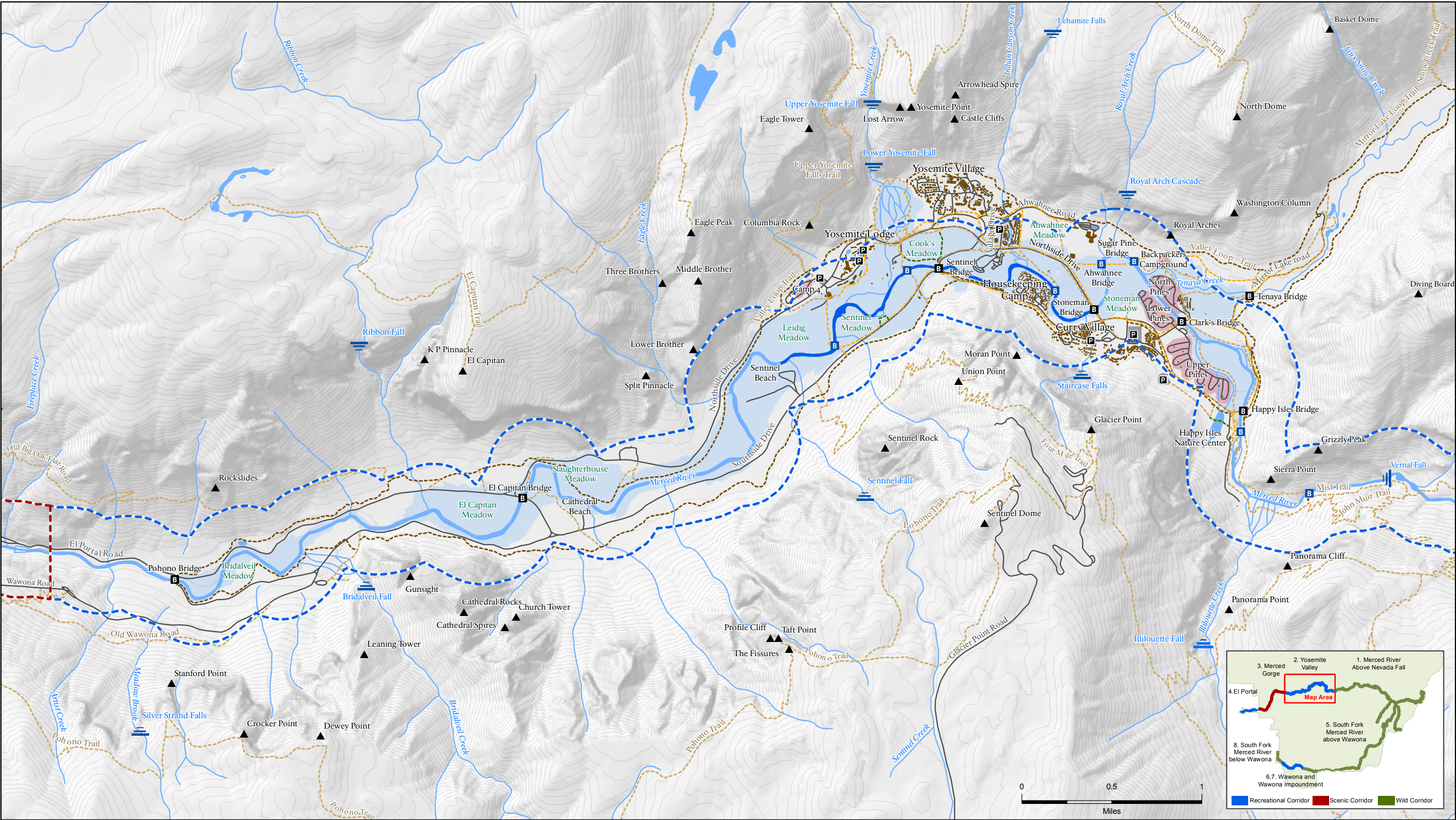



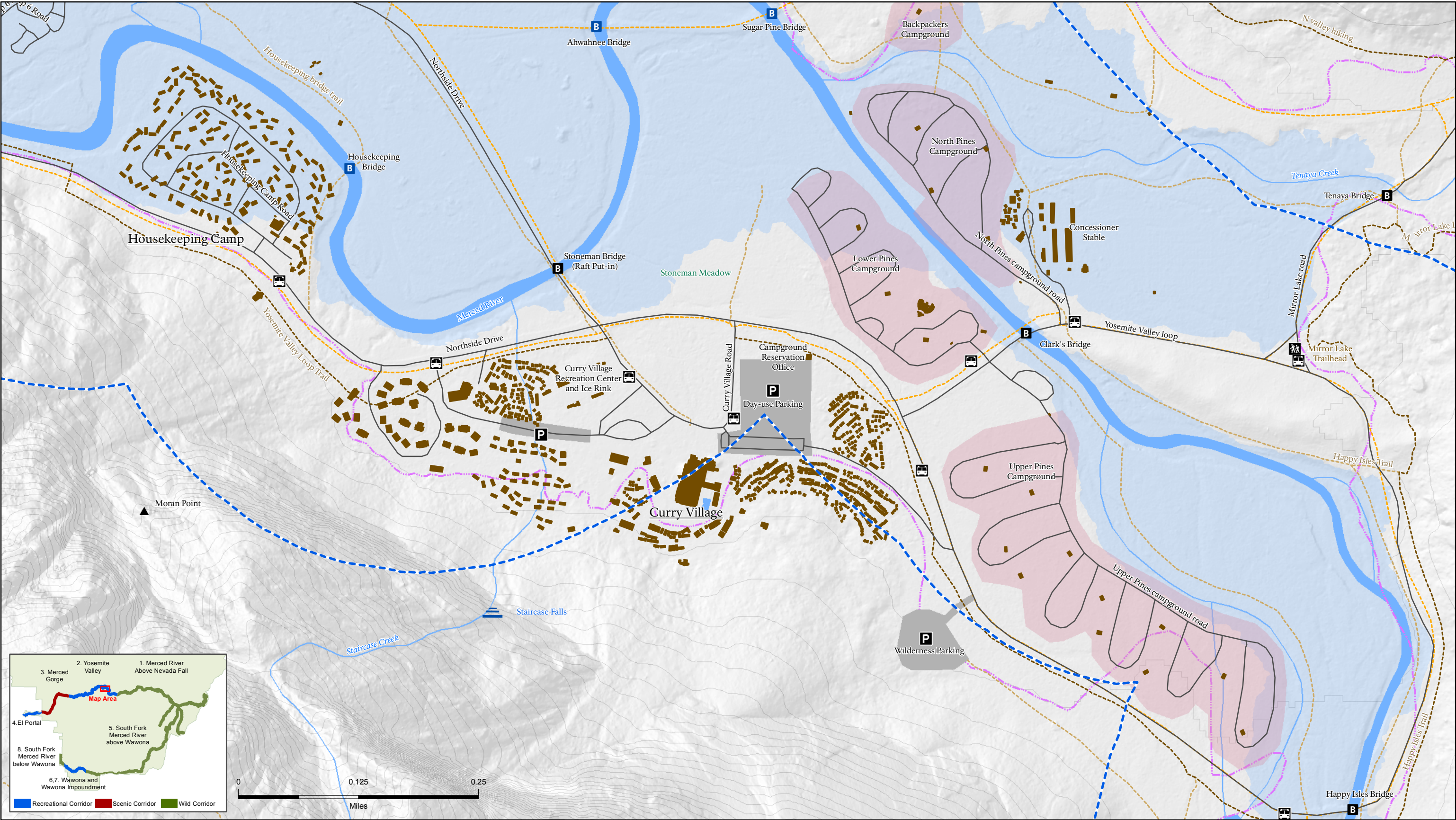
Figure 2.2-5

Recreational ORV - River Segment 2. Yosemite Valley  
Recreational WSR Corridor

- |   |  |   |
|---|--|---|
| <ul style="list-style-type: none"><li>Recreational WSR Corridor Classification</li><li>Scenic WSR Corridor Classification</li><li>Building</li><li>Campground</li><li>100 Year Flood Boundary</li><li>Rafting Permitted</li></ul> | <ul style="list-style-type: none"><li>Road</li><li>Stream/River</li><li>Yosemite Valley Loop Trail</li><li>Bike path</li><li>Boardwalk</li><li>Trail</li></ul> | <ul style="list-style-type: none"><li>Parking</li><li>Landmark</li><li>Road bridge</li><li>Footbridge</li><li>Waterfall</li></ul> |
|---|--|---|

	National Park Service U.S. Department of the Interior	
	Produced by: <b>Yosemite Planning Division</b>	
	Projection:	North American Datum 1983, UTM Zone 10
	Date:	2/25/11
	File:	



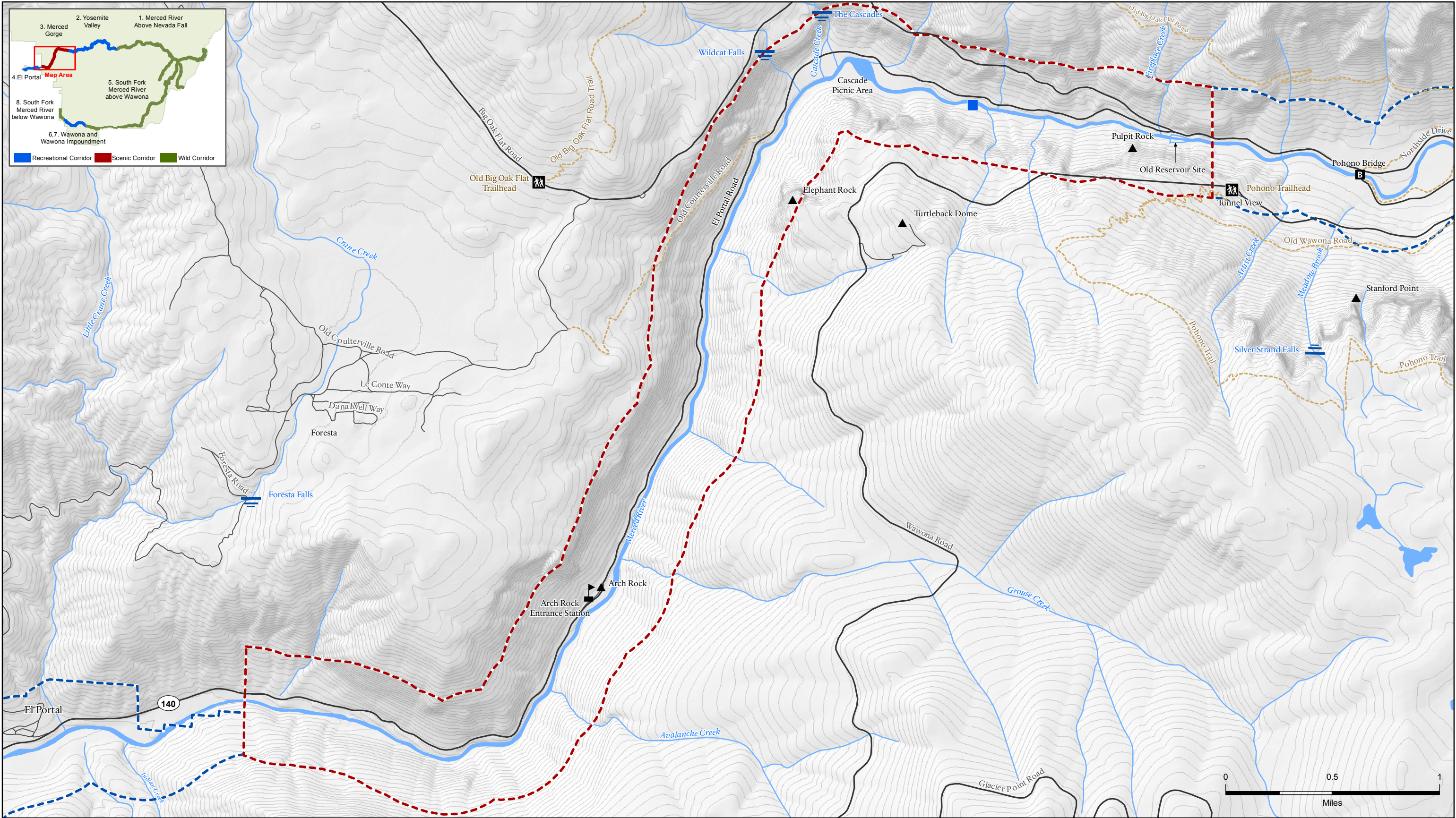


**Figure 2.2-6**  
**Recreational ORV - River Segment 2. Yosemite Valley**  
**Curry Village, Pines Campgrounds, and Housekeeping Camp**  
**Recreational WSR Corridor**

- |  |                     |                            |
|--|---------------------|----------------------------|
| Recreational WSR Corridor Classification | Landmark            | Waterfall                  |
| Building                                 | Valley Shuttle Stop | Road                       |
| 100 Year Flood Boundary                  | Trailhead           | Stream/River               |
| Base of Talus                            | Road bridge         | Yosemite Valley Loop Trail |
| Campground                               | Footbridge          | Bike path                  |
| Parking Lot                              |                     | Trail                      |

	National Park Service U.S. Department of the Interior	
	Produced by: <b>Yosemite Planning Division</b>	
	Projection:	North American Datum 1983, UTM Zone 10
	Date:	1/5/11
	File:	





**Figure 2.2-8**  
**Recreational ORV - River Segment 3.**  
**Merced Gorge**  
**Scenic WSR Corridor**

- |  |                      |
|--|----------------------|
| Scenic WSR Corridor Classification       | Landmark             |
| Recreational WSR Corridor Classification | Trailhead            |
| Trail                                    | Cascades Power Plant |
| Road                                     | Waterfall            |
| Stream/River                             |                      |



National Park Service U.S. Department of the Interior

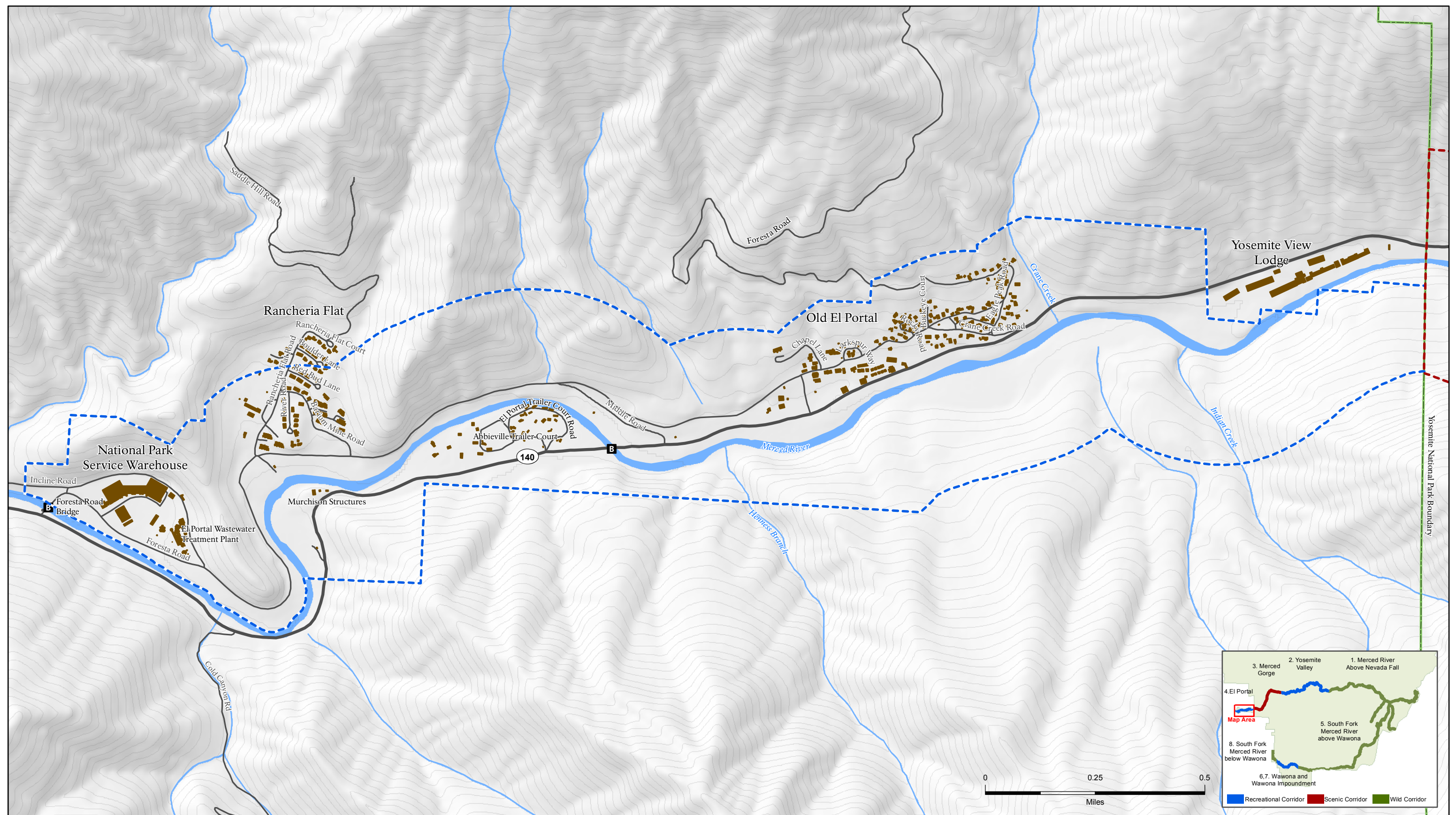
Produced by: **Yosemite Planning Division**

Projection: North American Datum 1983, UTM Zone 10

Date: 2/25/11

File:





**Figure 2.2-9**  
**Recreational ORV- River Segment 4. El Portal**  
**Recreational WSR Corridor**

- Recreational WSR Corridor Classification
- Scenic WSR Corridor Classification
- Building
- Highway 140
- Road
- Stream/River
- B Road bridge



*National Park Service U.S. Department of the Interior*

**Produced by: Yosemite Planning Division**

Projection: North American Datum 1983, UTM Zone 10

Date: 1/5/11

File: