

# Restoration of the Mariposa Grove Of Giant Sequoias Yosemite National Park

National Park Service  
U.S. Department of the Interior



Project Update  
Open House  
April 2012



# Restoration of the Mariposa Grove Of Giant Sequoias Yosemite National Park

National Park Service  
U.S. Department of the Interior



## Protection of the Mariposa Grove

***“An Act Authorizing a Grant to the State  
of California of the “Yo-Semite Valley,”  
and of the Land embracing the  
“Mariposa Big Tree Grove”***

*--- signed by President Lincoln, June 30,  
1864.*

The first legislation passed by Congress to specifically set aside public lands for their scenic values and *“be held for public uses, resort and recreation.”*



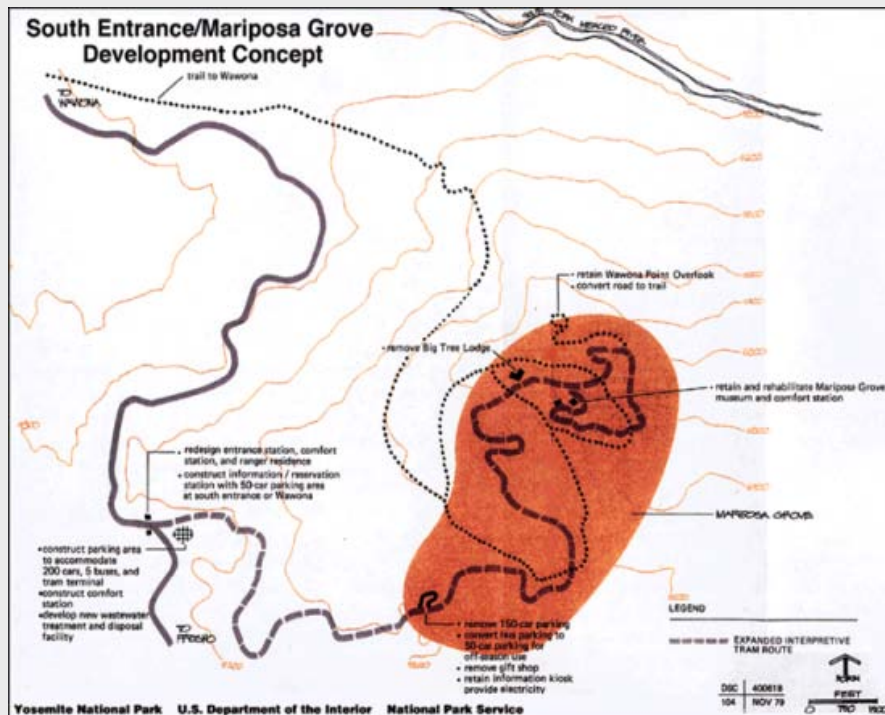
Wawona Tunnel Tree ca.1928

# Restoration of the Mariposa Grove Of Giant Sequoias Yosemite National Park

National Park Service  
U.S. Department of the Interior



## General Management Plan (NPS, 1980)



### Mariposa Grove Goals:

- Provide only visitor facilities consistent with preservation of the unique ecosystem;
- Remove all other facilities not necessary for the enjoyment of the resources

### South Entrance Goals

- Provide park orientation and information/reservation system
- Provide staging facilities for Mariposa Grove
- Provide adequate road to Mariposa Grove for buses

# Restoration of the Mariposa Grove Of Giant Sequoias Yosemite National Park

National Park Service  
U.S. Department of the Interior



## Project Need

Today, the Mariposa Grove is a popular all-season destination for visitors to Yosemite. Existing visitor use and site infrastructure are severely impacting the health of the ancient trees as well as the quality of the visitor experience.



# Restoration of the Mariposa Grove Of Giant Sequoias Yosemite National Park

National Park Service  
U.S. Department of the Interior



## Project Purpose

- Restore degraded Grove habitat
- Enhance the visitor experience
- Sustain long-term health of the Giant Sequoias



# Restoration of the Mariposa Grove Of Giant Sequoias Yosemite National Park

National Park Service  
U.S. Department of the Interior



## Issues Include:

### **Natural Resources**

Giant sequoias have shallow surface roots. Healthy root structure is essential to ensure the longevity of these ancient giant trees.

### **Infrastructure**

Existing infrastructure, including the tram fueling station, parking lot and gift shop, are located in prime sequoia habitat within the Grove

### **Sense of Arrival**

The arrival experience can be confusing and frustrating for visitors

### **Congestion**

The site has outgrown its ability to address current visitation needs



# Restoration of the Mariposa Grove Of Giant Sequoias Yosemite National Park

National Park Service  
U.S. Department of the Interior



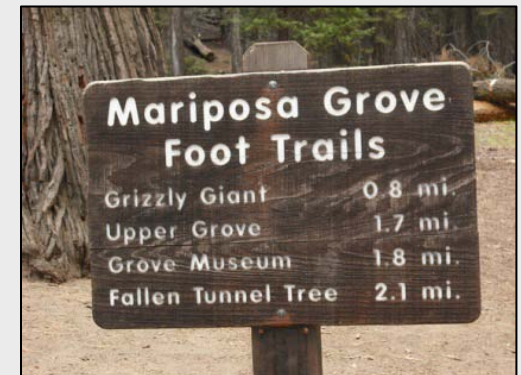
## Public Scoping Comments

### Visitor Use and Experience

- Manage visitation impacts to the Grove
- Improve accessibility (universal design)
- Trail signs are inadequate and confusing
- Gift shop is not an appropriate “welcome”
- Restrooms are completely inadequate

### Protecting the Grove

- Establish more fencing to protect trees and to keep visitors on trails
- Sustainability of Grove health for the next 150-plus years is important
- Remove those portions of the tram and roads that are damaging trees and compacting soil
- Maintain burns to help sequoias ecologically



# Restoration of the Mariposa Grove Of Giant Sequoias Yosemite National Park

National Park Service  
U.S. Department of the Interior



## Public Scoping Comments

### Transportation

- Parking at South Entrance is not sufficient
- Establish shuttle directly out of South Entrance vs. Wawona
- Remove Lower Grove parking lot
- Remove tram from Upper Grove but keep in Lower Grove

### Soundscape

- Noise from buses and trams carry throughout Grove

### NEPA Process

- Planning and Design should be coordinated with MRP planning process





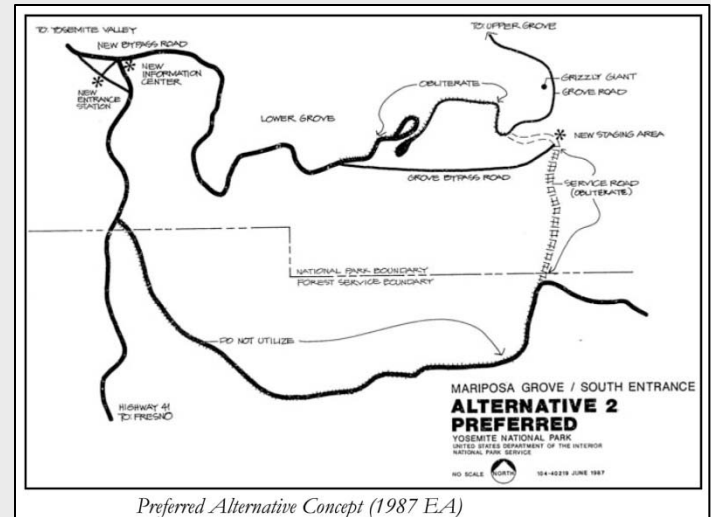
# Restoration of the Mariposa Grove Of Giant Sequoias Yosemite National Park

National Park Service  
U.S. Department of the Interior



## Related Planning Efforts

- 1987 South Entrance/Mariposa Grove Concept Plan
- 2009 South Entrance Station Improvements (ARG Design Study)
- 2011 South Entrance Interim Safety Improvements (CE)
- Merced River Plan (DEIS, in progress)



# Restoration of the Mariposa Grove Of Giant Sequoias Yosemite National Park

National Park Service  
U.S. Department of the Interior



## Data Collection

- Trees
- Hydrology
- Wildlife
- Cultural resources
- Transportation/Visitor Studies



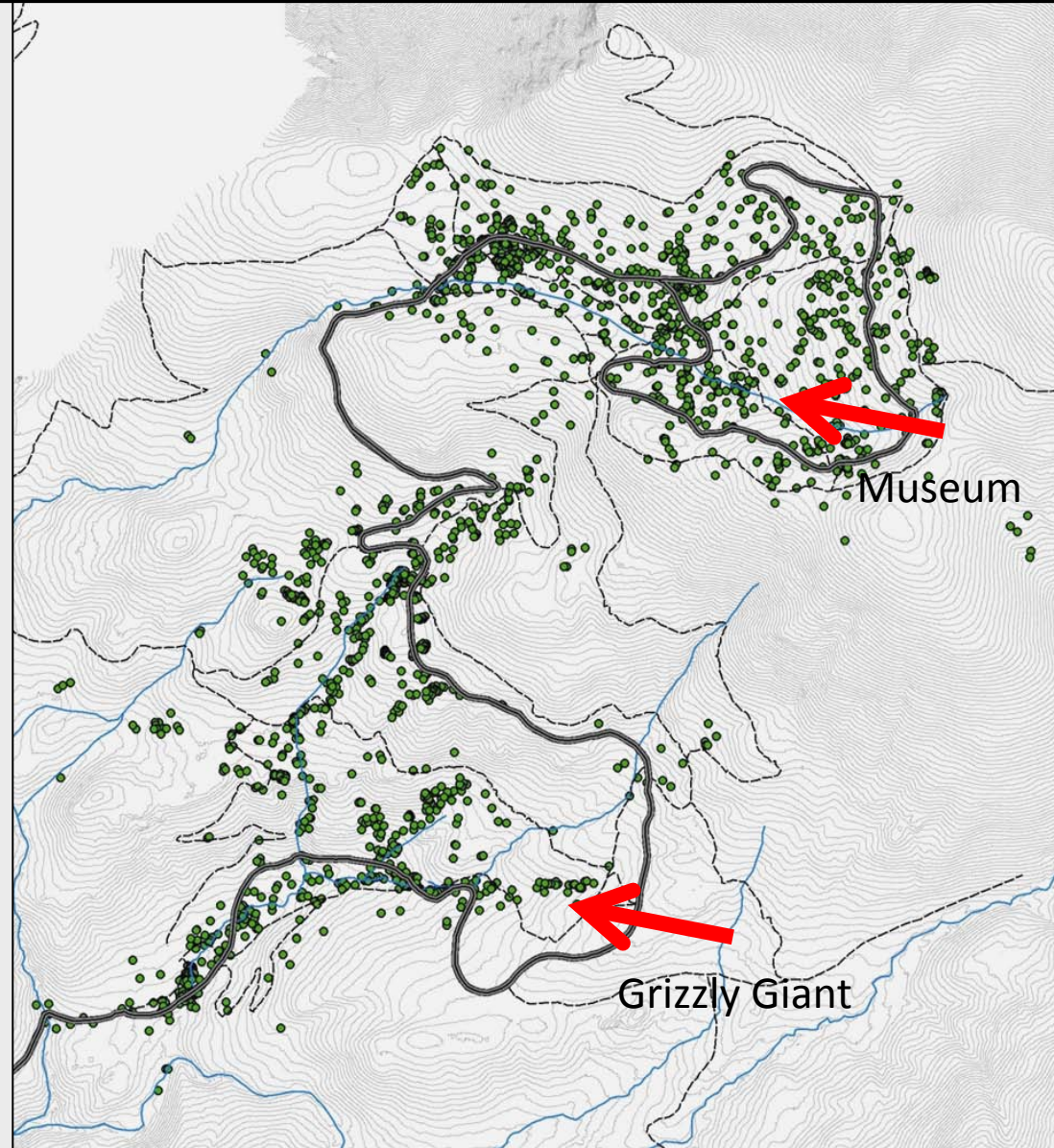
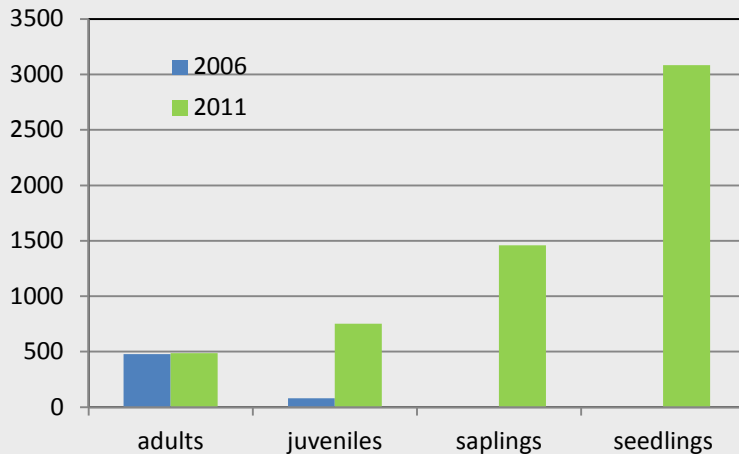
# Restoration of the Mariposa Grove Of Giant Sequoias Yosemite National Park

National Park Service  
U.S. Department of the Interior



## Giant Sequoia Inventory

- 484 adults
  - 768 juveniles
  - 1,467 Saplings
  - ~3,084 seedlings
- ~5,803 live individuals



# Restoration of the Mariposa Grove Of Giant Sequoias Yosemite National Park

National Park Service  
U.S. Department of the Interior

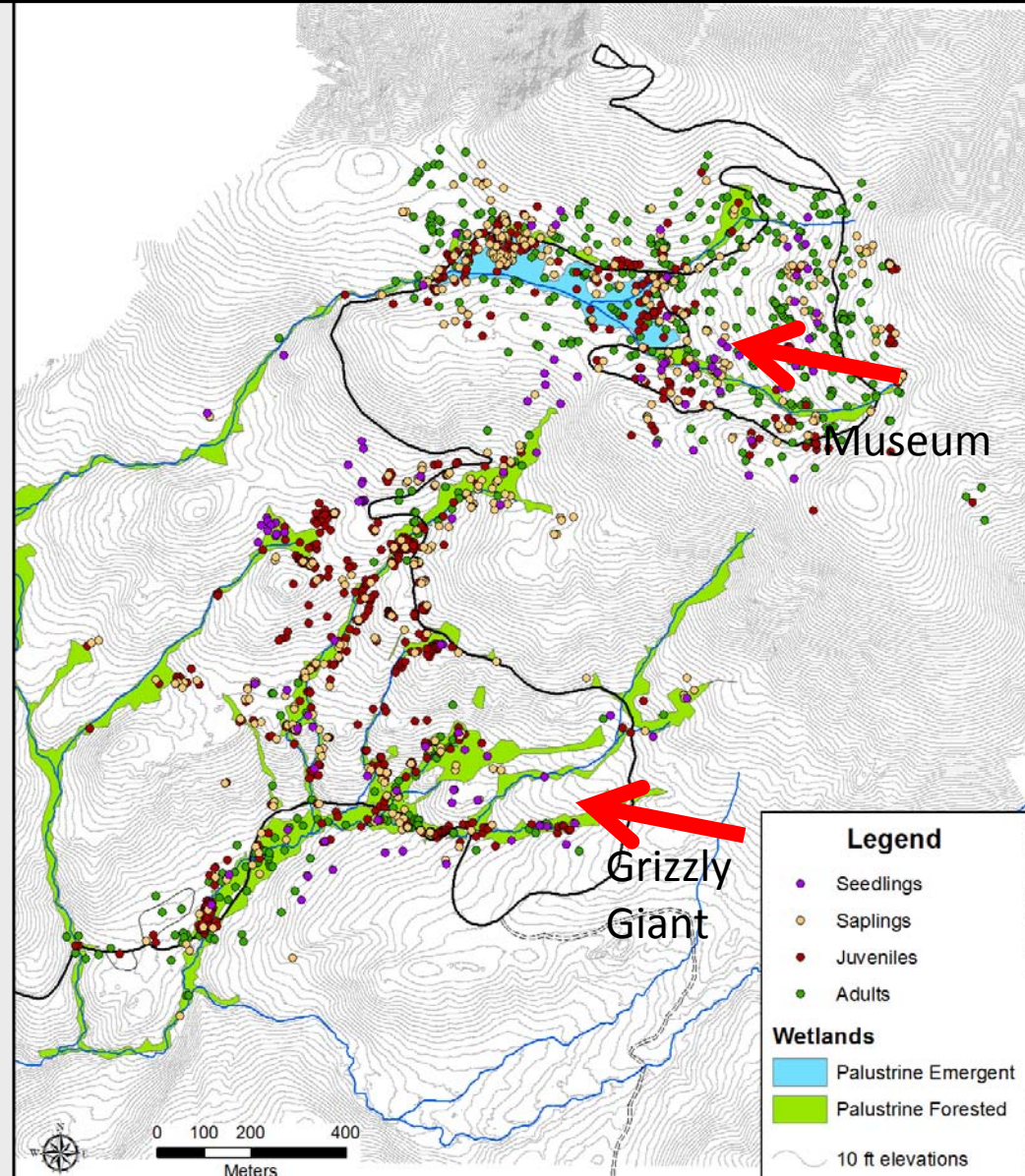


## Natural Resources:

### Giant sequoias and wetlands

Extremely important for giant sequoia longevity, germination and recruitment

- Adults
  - 25% within
  - 54% within 100 feet
- Juveniles
  - 37% within
  - 82% within 100 feet
- Saplings
  - 42% within
  - 68% within 100 feet
- Seedlings
  - 15% within
  - 31% within 100 feet



# Restoration of the Mariposa Grove Of Giant Sequoias Yosemite National Park

National Park Service  
U.S. Department of the Interior



## Hydrology:

- Important for giant sequoia longevity, germination and recruitment
- Roads and trails intercept and concentrate surface and shallow subsurface flow
- Runoff has been channeled through culverts and inside ditches increasing transit rates (less absorption into soil)
- 65% of culverts are compromised or non-functioning
- Infiltration and surface runoff is impacted by compacted soils
- Leaking utility pipes need repair



# Restoration of the Mariposa Grove Of Giant Sequoias Yosemite National Park

National Park Service  
U.S. Department of the Interior



## Natural Resources: Wildlife

Important breeding habitat for three special status species



Spotted Owl



Pacific Fisher



Pallid Bat

# Restoration of the Mariposa Grove Of Giant Sequoias Yosemite National Park

National Park Service  
U.S. Department of the Interior



*“...historic resources, especially those relating to the beginnings of a national conservation ethic; and evidences of the Indians that lived on the land...”*



# Restoration of the Mariposa Grove Of Giant Sequoias Yosemite National Park

National Park Service  
U.S. Department of the Interior



*“The California big tree is also in a manner sacred to them [the Mono], and they call it woh-woh'-nau, a word formed in imitation of the hoot of the owl, which is the guardian spirit and deity of this great monarch of the forest.”*

- Stephen Powers, 1887



# Restoration of the Mariposa Grove Of Giant Sequoias Yosemite National Park

National Park Service  
U.S. Department of the Interior



## Visitor Use and Transportation Assessment



# Restoration of the Mariposa Grove Of Giant Sequoias Yosemite National Park

National Park Service  
U.S. Department of the Interior



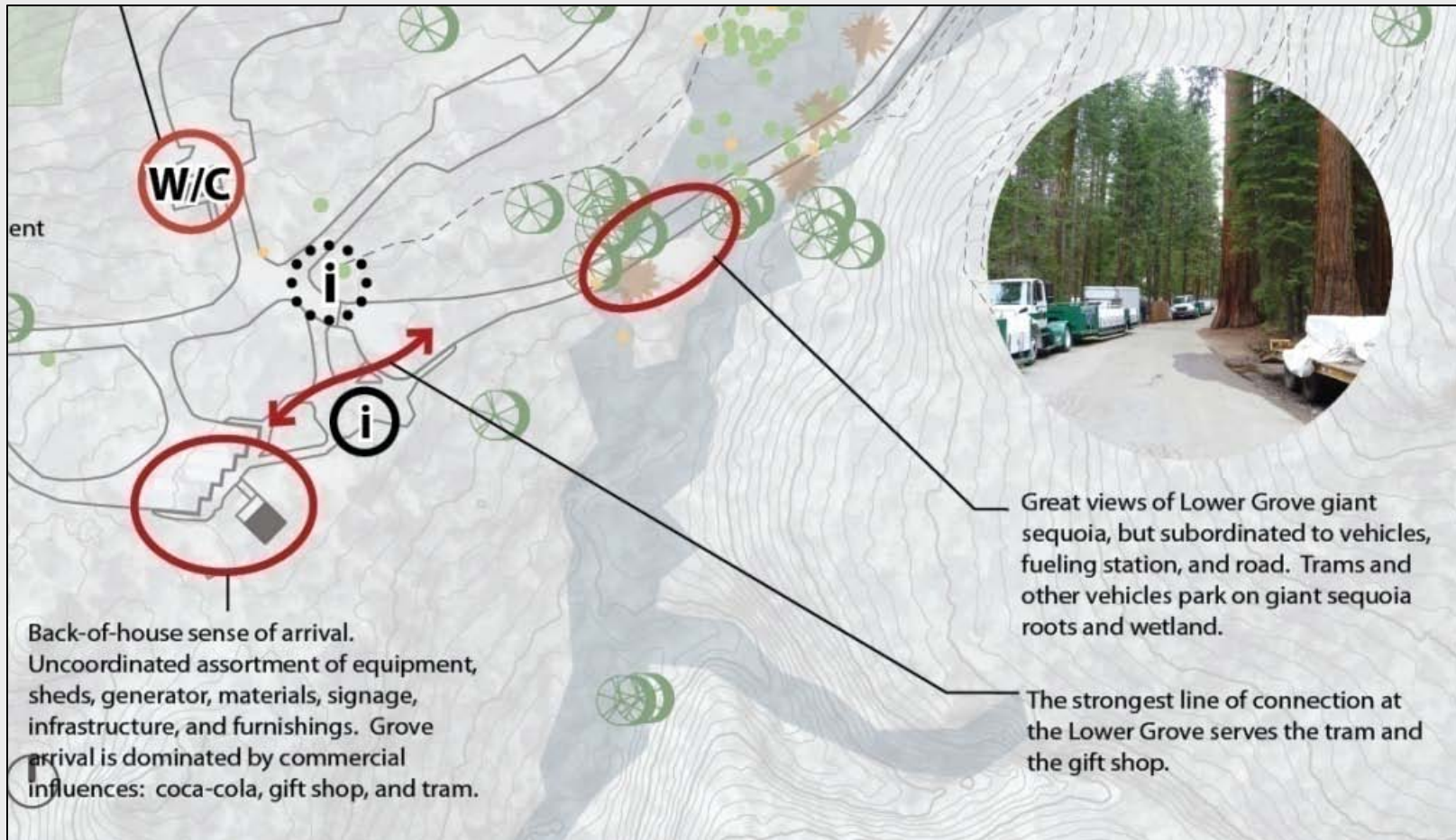
## Design Charettes

- Helps generate ideas and solutions while engaging diverse points of view
- Interdisciplinary discussion
- Addresses design problems
- Typically breaks into sub-groups to address the range of issues
- Reporting out ensures all groups are aware of issues and discussions



# Restoration of the Mariposa Grove Of Giant Sequoias Yosemite National Park

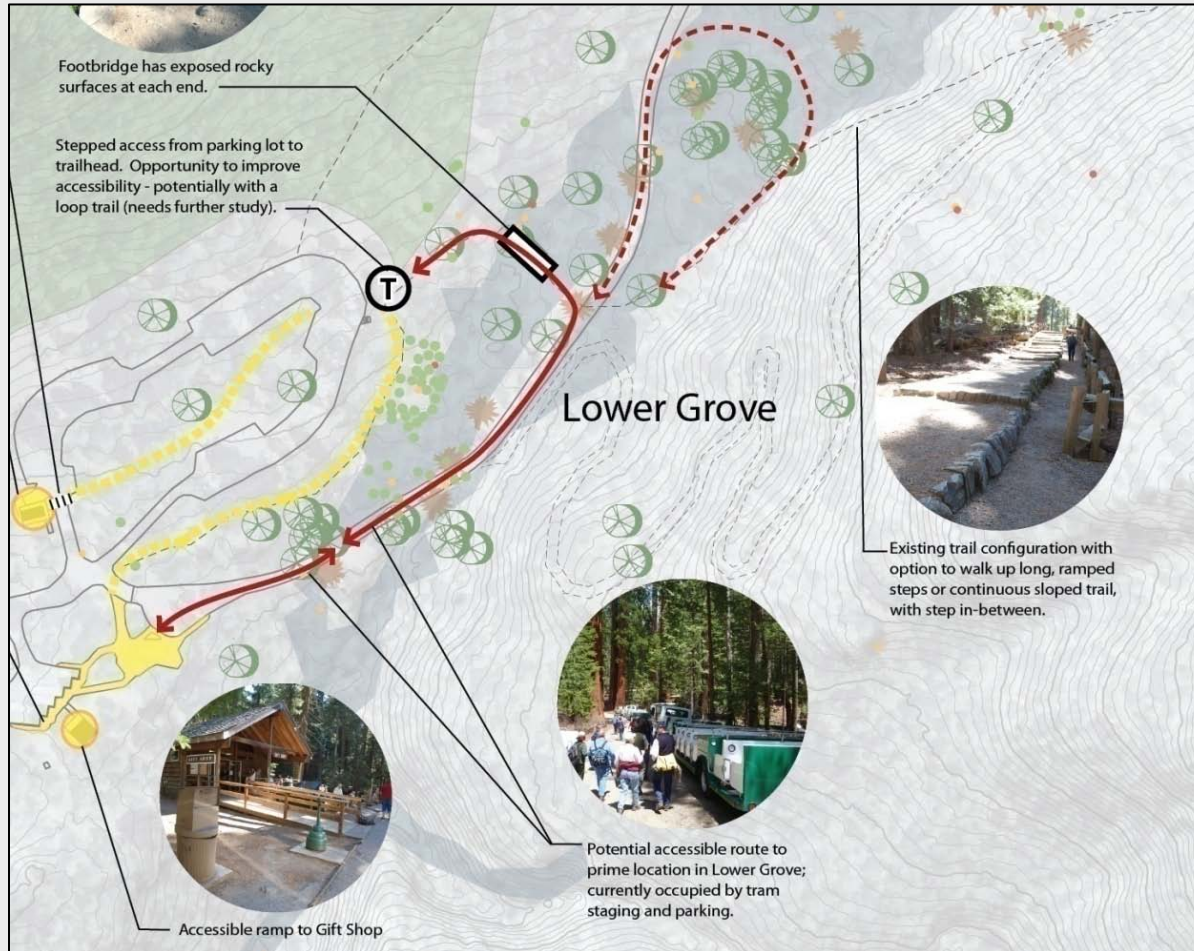
National Park Service  
U.S. Department of the Interior



## Assessment of Site/Infrastructure

# Restoration of the Mariposa Grove Of Giant Sequoias Yosemite National Park

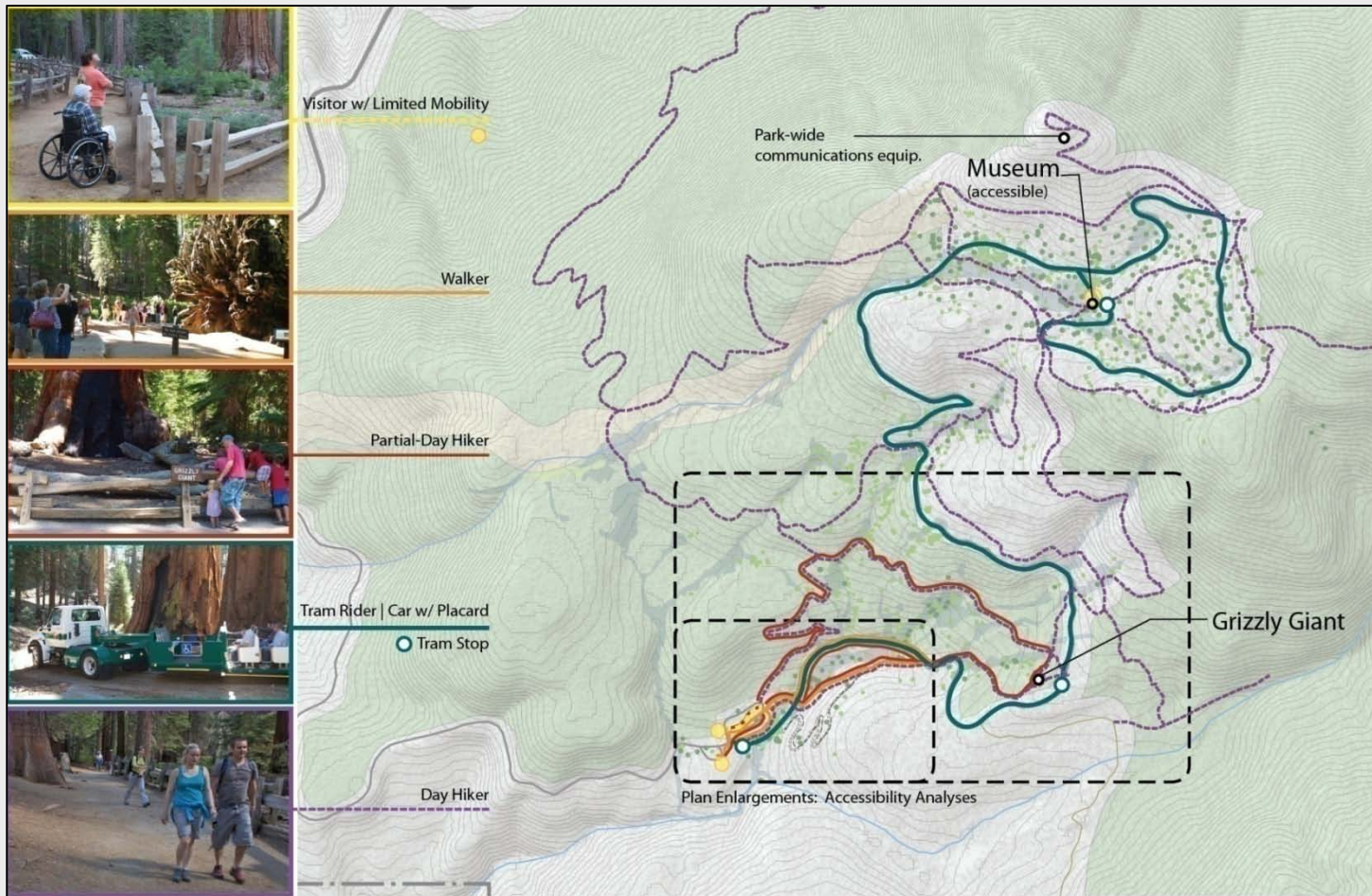
National Park Service  
U.S. Department of the Interior



## Improving Site Accessibility

# Restoration of the Mariposa Grove Of Giant Sequoias Yosemite National Park

National Park Service  
U.S. Department of the Interior



Study of Visitation Patterns

# Restoration of the Mariposa Grove Of Giant Sequoias Yosemite National Park

National Park Service  
U.S. Department of the Interior



## Incorporating Sustainability

### **WATER CONSERVATION**

- Stormwater management: bioswales, permeable materials
- Water conservation with interpretation
- Constructed wetland for wastewater treatment

### **ENERGY CONSERVATION**

- Renewable energy use
- Energy efficient structures and systems (i.e., passive design)

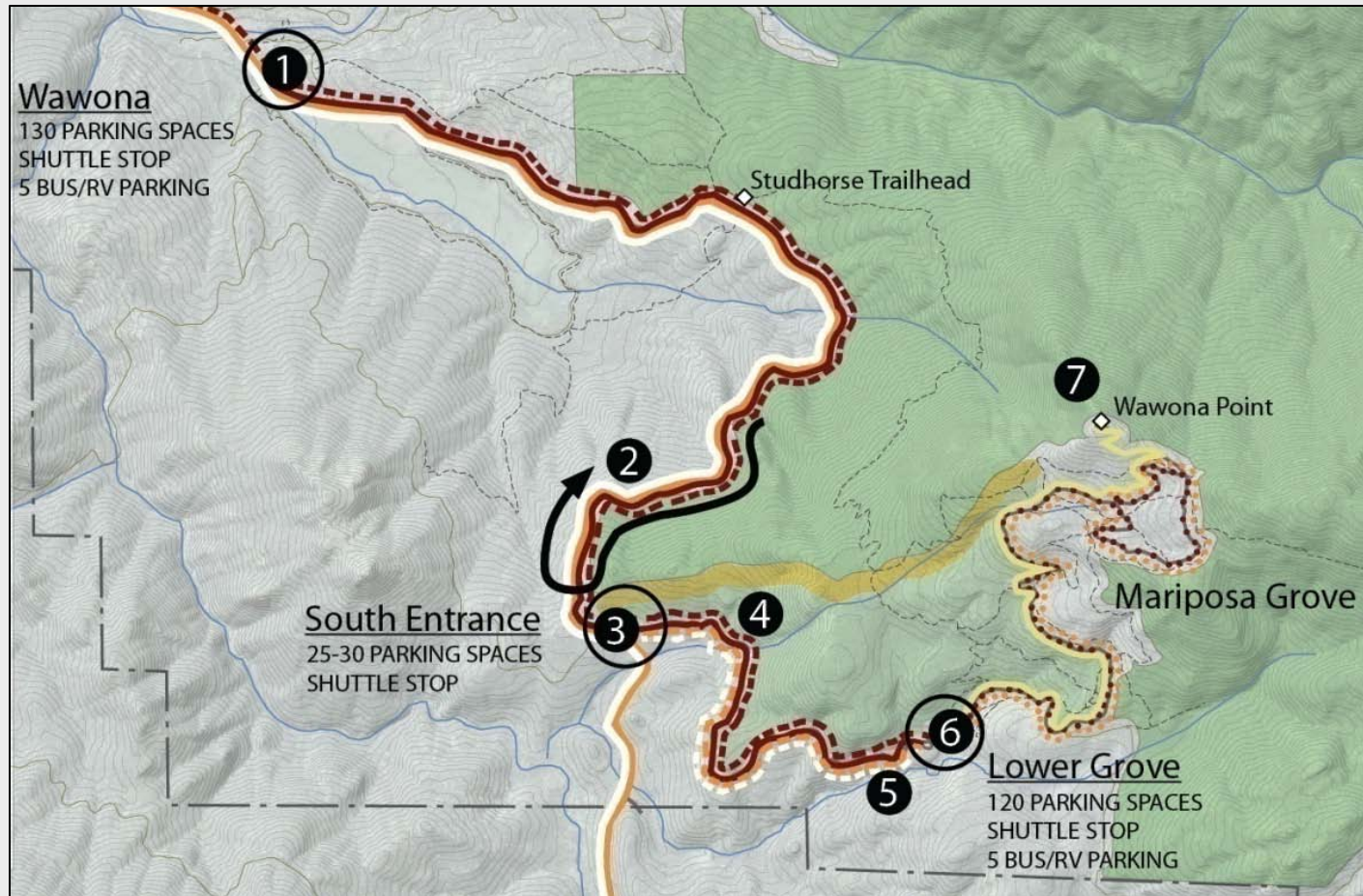
### **SUSTAINABLE TRANSPORTATION**

- Shuttles and more efficient parking locations equals fewer miles and reduced carbon emissions



# Restoration of the Mariposa Grove Of Giant Sequoias Yosemite National Park

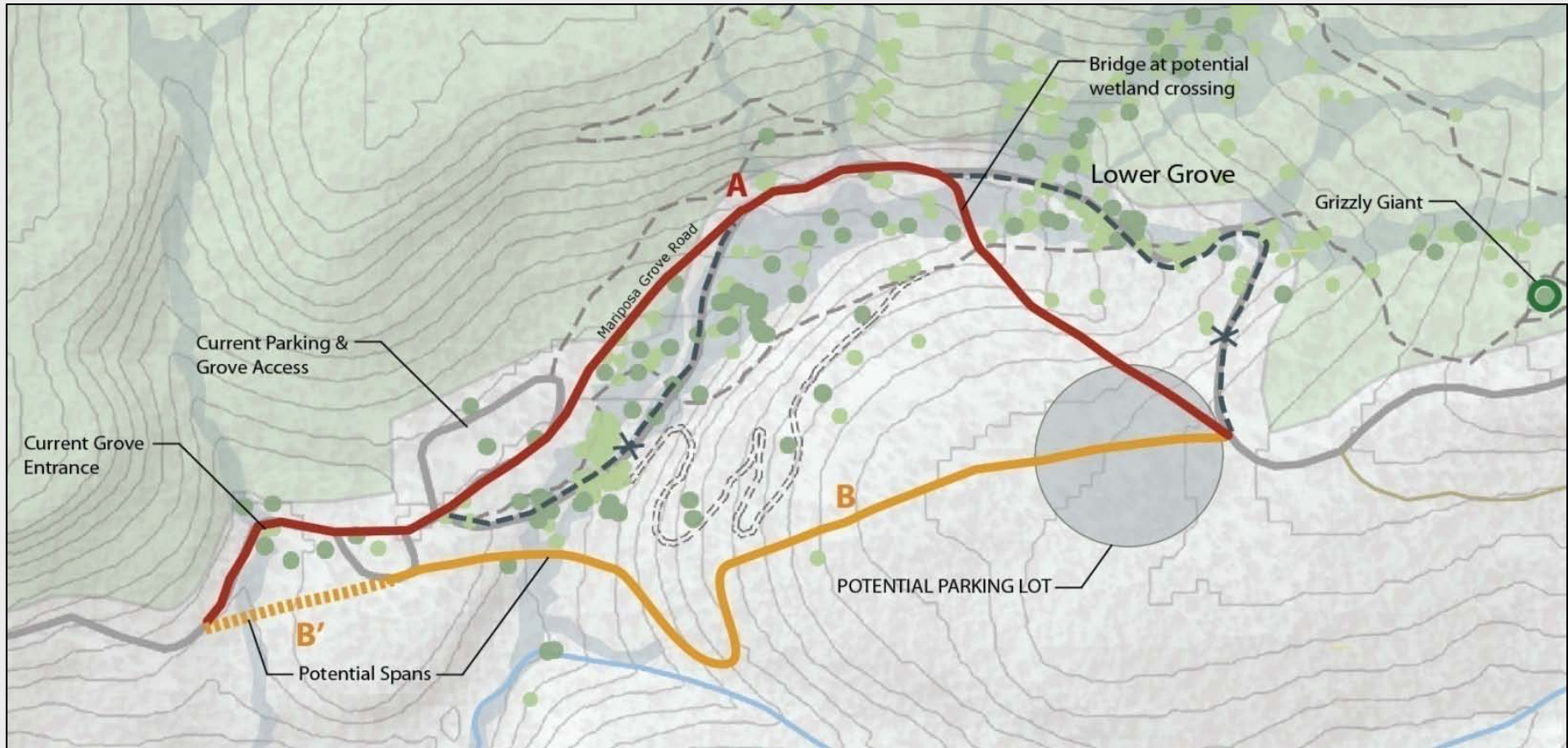
National Park Service  
U.S. Department of the Interior



## Parking Assessment

# Restoration of the Mariposa Grove Of Giant Sequoias Yosemite National Park

National Park Service  
U.S. Department of the Interior

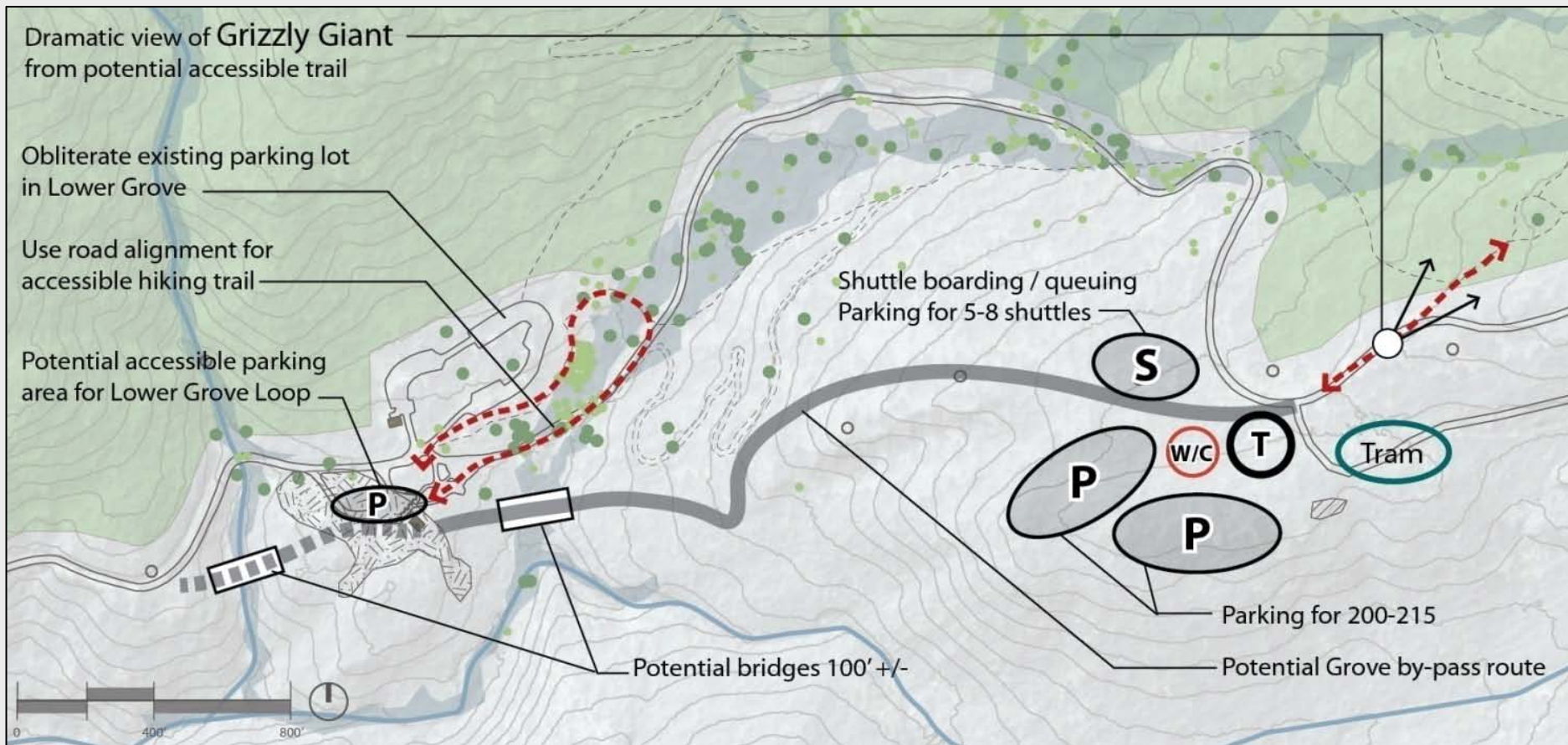


## Exploring Site Design Options: Road Access



# Restoration of the Mariposa Grove Of Giant Sequoias Yosemite National Park

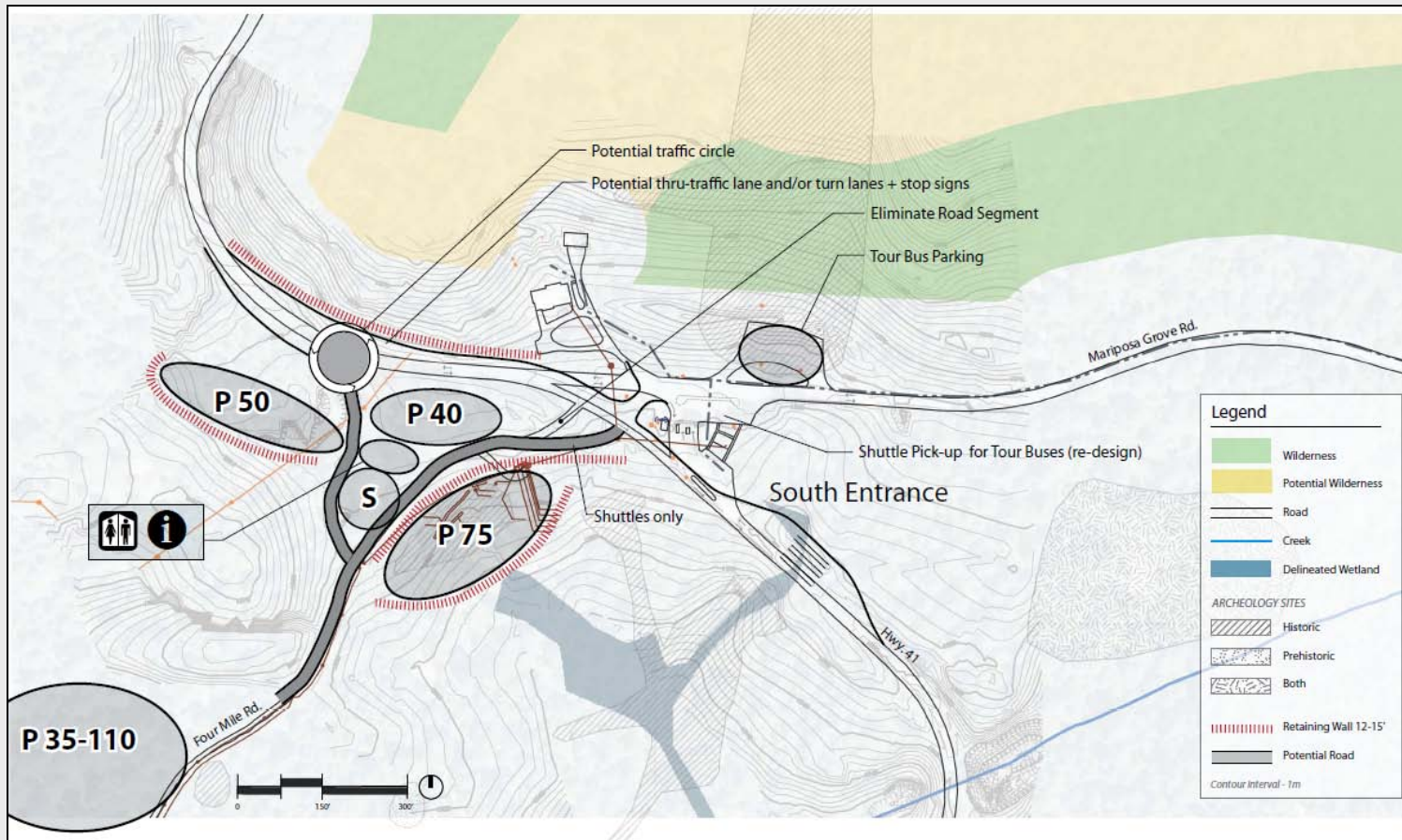
National Park Service  
U.S. Department of the Interior



## Site Test-Fits: Parking for the Grizzly Giant

# Restoration of the Mariposa Grove Of Giant Sequoias Yosemite National Park

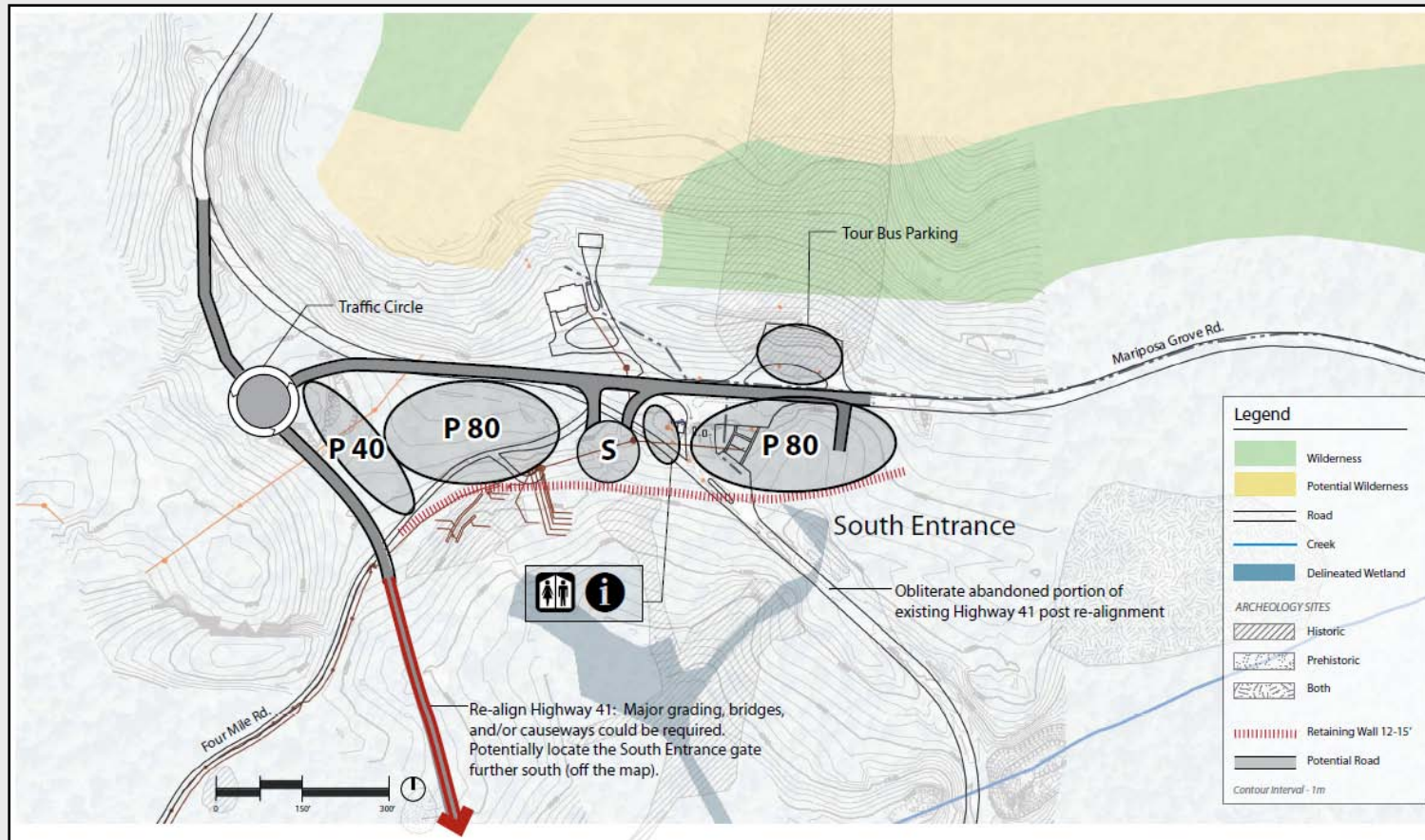
National Park Service  
U.S. Department of the Interior



## South Entrance Site Design Concept #1

# Restoration of the Mariposa Grove Of Giant Sequoias Yosemite National Park

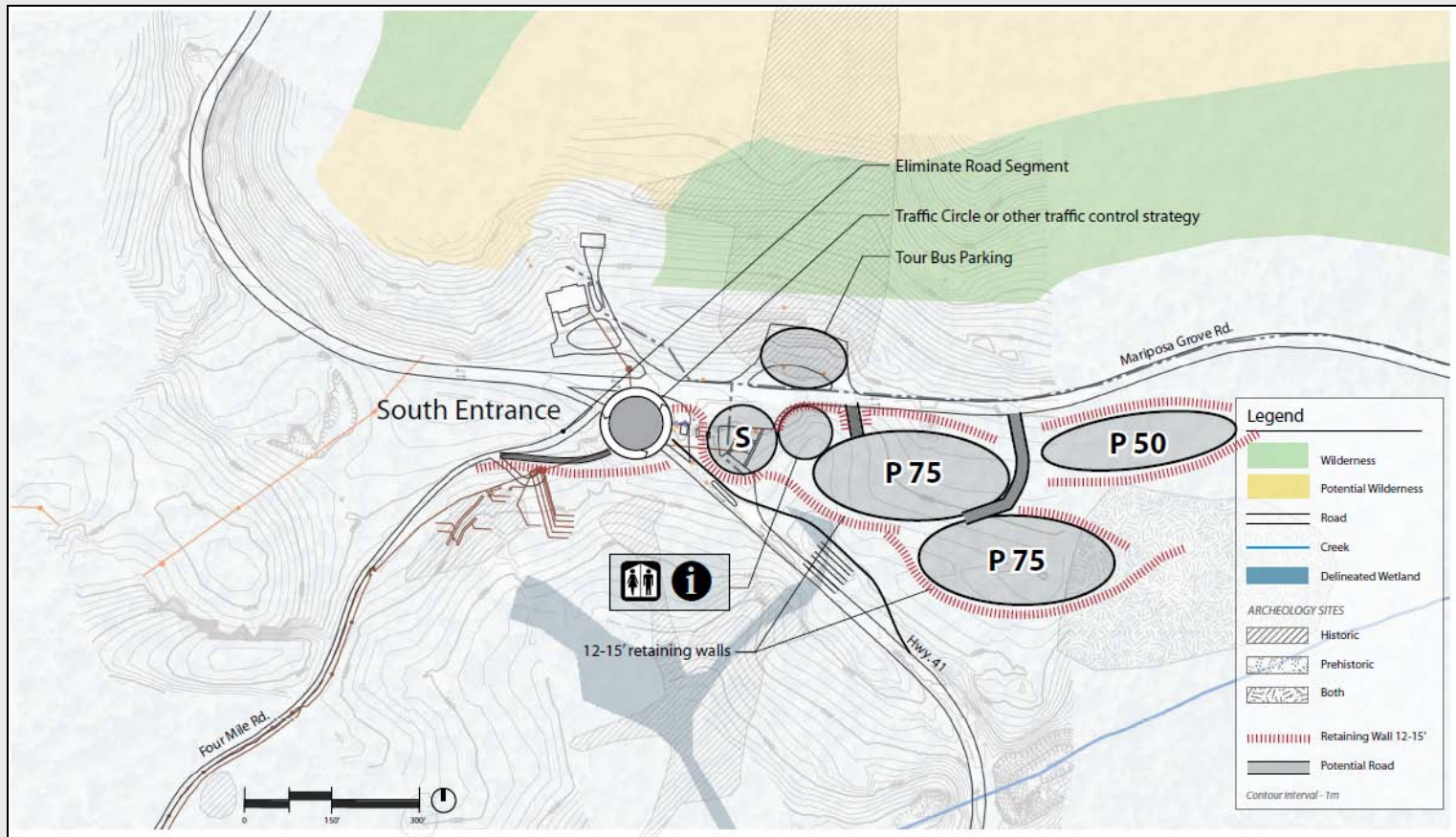
National Park Service  
U.S. Department of the Interior



## South Entrance Site Design Concept #2

# Restoration of the Mariposa Grove Of Giant Sequoias Yosemite National Park

National Park Service  
U.S. Department of the Interior



## South Entrance Site Design Concept #3

# Restoration of the Mariposa Grove Of Giant Sequoias Yosemite National Park

National Park Service  
U.S. Department of the Interior



## Evaluate Draft Design Concepts

### Identifying Commonalities

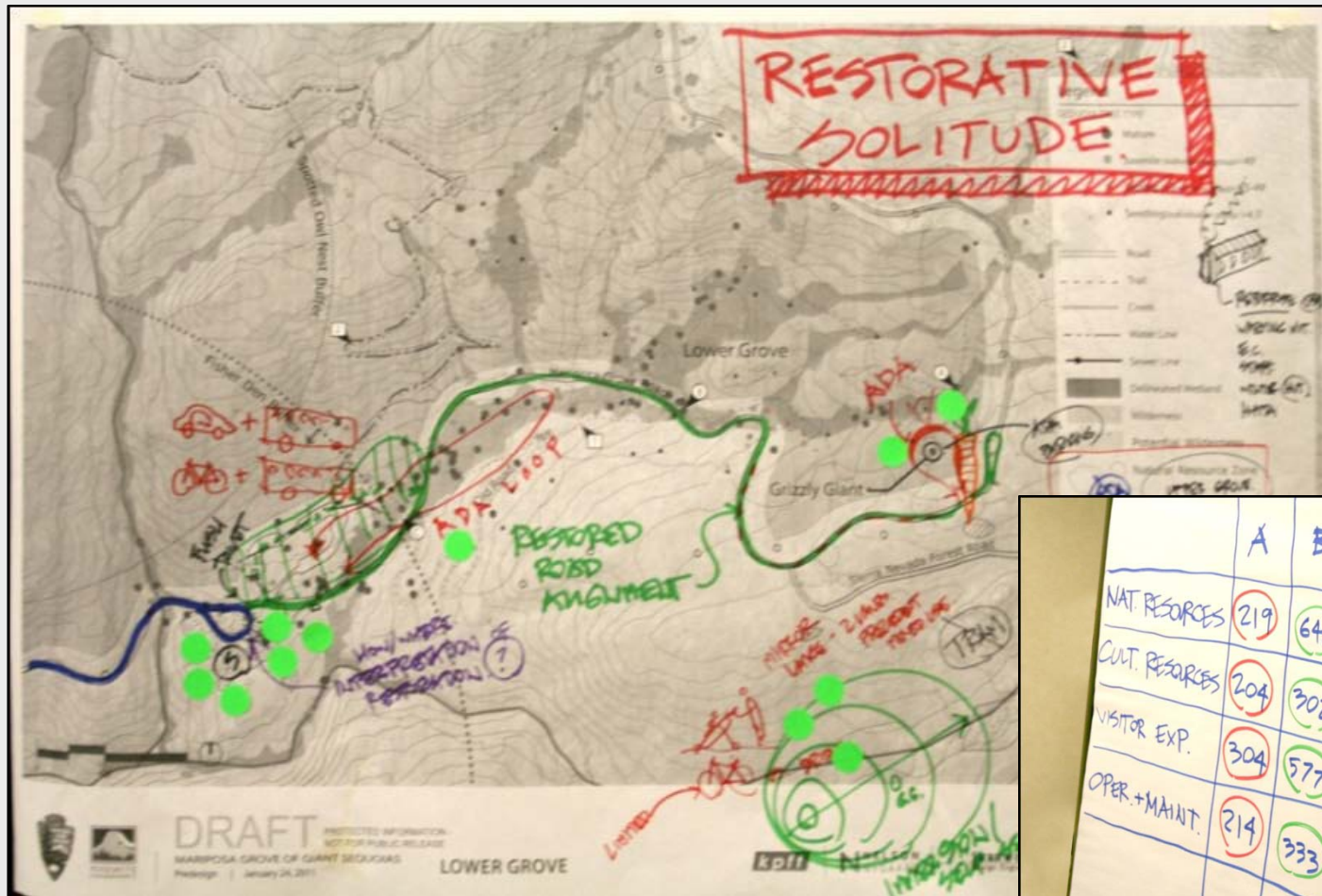
- Improve signage and wayfinding
- Rehabilitate Wawona Point
- Engineered hydrology improvements
- Fix tight curve at MG entry sign
- Move museum function (some)
- View management
- Trail reconfiguration & consolidation
- Improve visitor education
- Interpret prehistoric archeology

Generate ideas for further design, development, and evaluation as the project progresses



# Restoration of the Mariposa Grove Of Giant Sequoias Yosemite National Park

National Park Service  
U.S. Department of the Interior



	A	B	C	D
NAT. RESOURCES	219	648	406 ↔ 451	
CULT. RESOURCES	204	302	260 ↔ 263	
VISITOR EXP.	304	577	519	416
OPER.+MAINT.	214	333	278	244

# Restoration of the Mariposa Grove Of Giant Sequoias Yosemite National Park

National Park Service  
U.S. Department of the Interior



## Next Steps: Developing Alternatives

-Improve Shuttle Experience



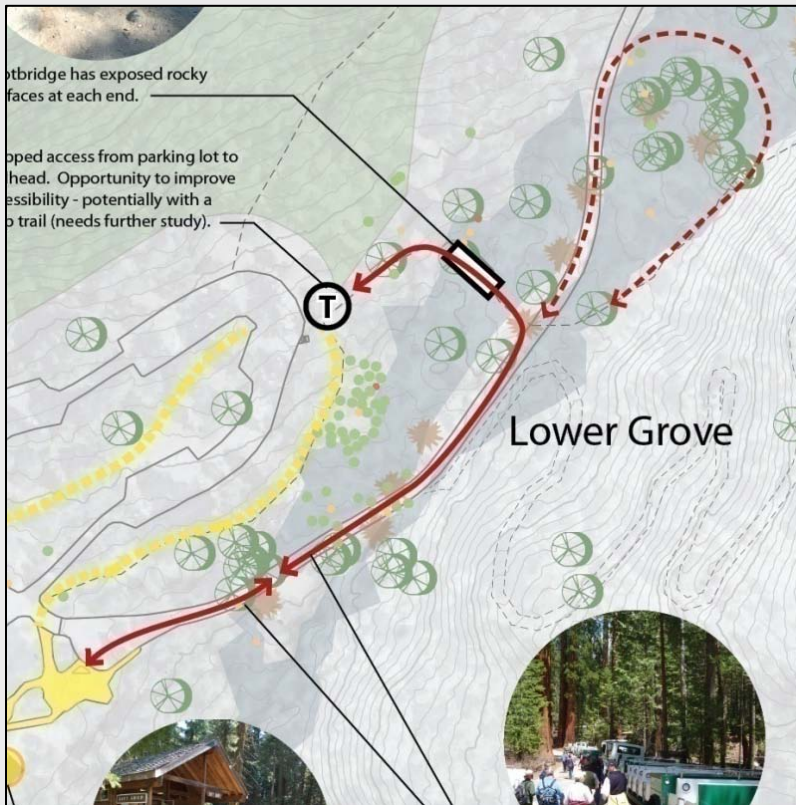
# Restoration of the Mariposa Grove Of Giant Sequoias Yosemite National Park

National Park Service  
U.S. Department of the Interior



## Next Steps: Developing Alternatives

-Looking at ways to improve accessibility in the Grove





# Restoration of the Mariposa Grove Of Giant Sequoias Yosemite National Park

National Park Service  
U.S. Department of the Interior



## Next Steps: Developing Alternatives

-Protecting the Trees



# Restoration of the Mariposa Grove Of Giant Sequoias Yosemite National Park

National Park Service  
U.S. Department of the Interior



## Next Steps: Developing Alternatives

-Reducing Paving within the Grove



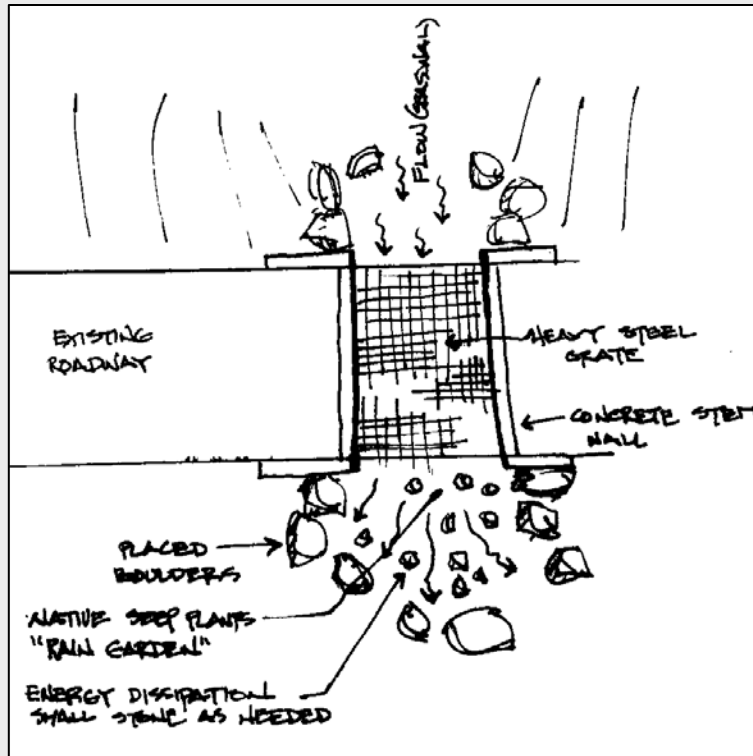
# Restoration of the Mariposa Grove Of Giant Sequoias Yosemite National Park

National Park Service  
U.S. Department of the Interior



## Next Steps: Developing Alternatives

-Improving Ground Water Retention



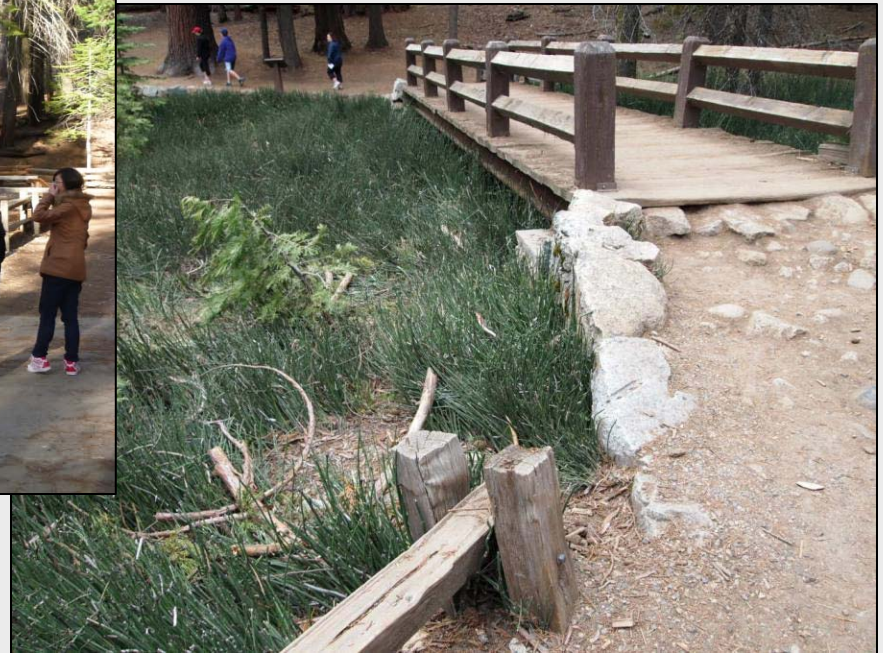
# Restoration of the Mariposa Grove Of Giant Sequoias Yosemite National Park

National Park Service  
U.S. Department of the Interior



## Next Steps: Developing Alternatives

-Relocating Trails Away from Sensitive Resources



# Restoration of the Mariposa Grove Of Giant Sequoias Yosemite National Park

National Park Service  
U.S. Department of the Interior



Envisioning Restoration of the Lower Grove



# Restoration of the Mariposa Grove Of Giant Sequoias Yosemite National Park

National Park Service  
U.S. Department of the Interior



# Restoration of the Mariposa Grove Of Giant Sequoias Yosemite National Park

National Park Service  
U.S. Department of the Interior



Relocating Infrastructure



# Restoration of the Mariposa Grove Of Giant Sequoias Yosemite National Park

National Park Service  
U.S. Department of the Interior



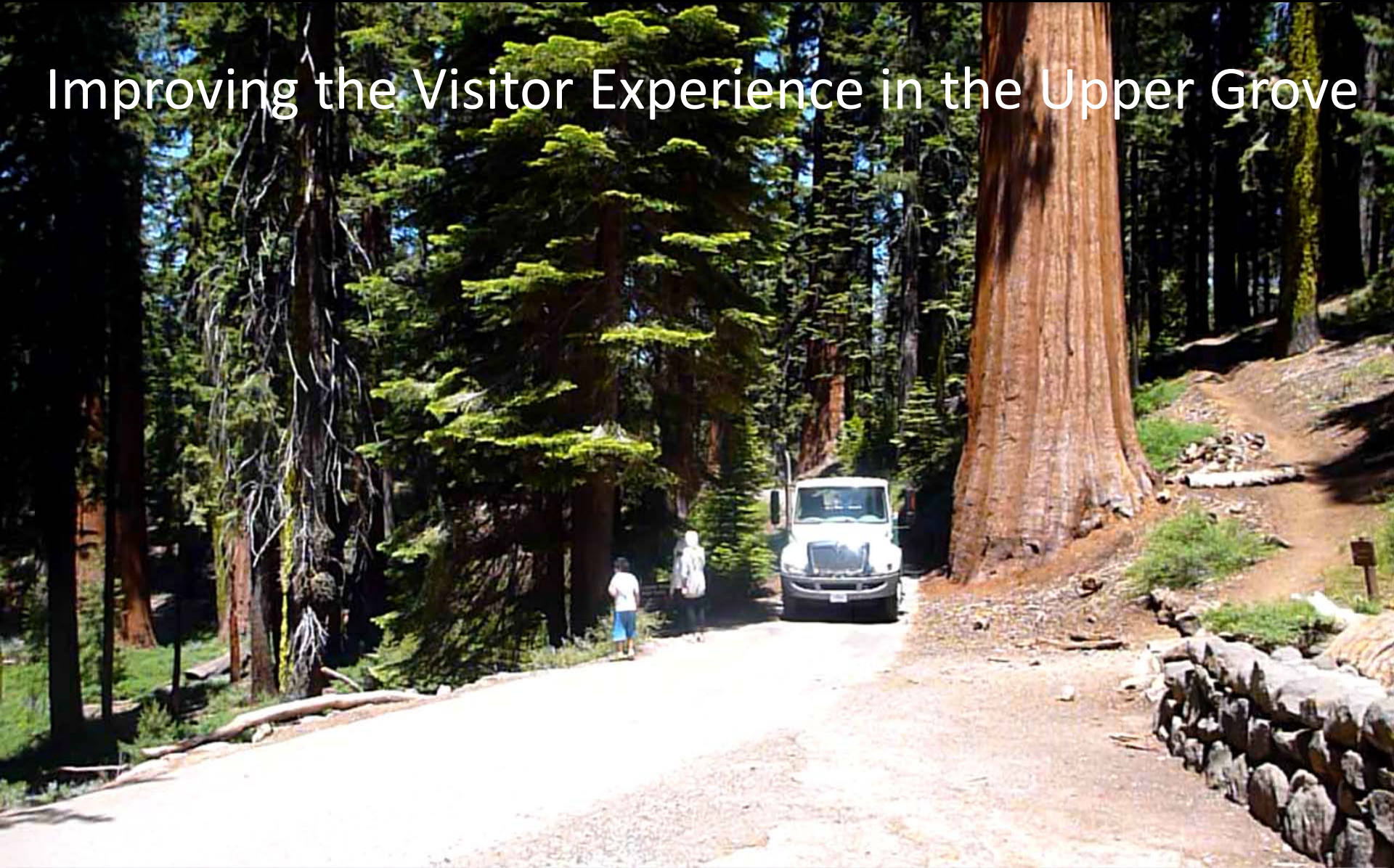


# Restoration of the Mariposa Grove Of Giant Sequoias Yosemite National Park

National Park Service  
U.S. Department of the Interior



## Improving the Visitor Experience in the Upper Grove



# Restoration of the Mariposa Grove Of Giant Sequoias Yosemite National Park

National Park Service  
U.S. Department of the Interior



# Restoration of the Mariposa Grove Of Giant Sequoias Yosemite National Park

National Park Service  
U.S. Department of the Interior



## Project Milestones

### 2011

- May 27 Internal Scoping Kick-off/Site Visit
- August 15 Initiate Consultation w/ Agencies and Tribes
- August 30 Public Scoping- Open House/Webinar**
- October 14 Public Site Visit**
- December 3 Federal Register Notice of Intent to Prepare an EIS

### 2012

- January 5 Consultation with Tribes
- January 24 Design Charette # 1
- January 25 Public Open House**
- February 3 End Public Scoping
- March 13 Design Charette # 2



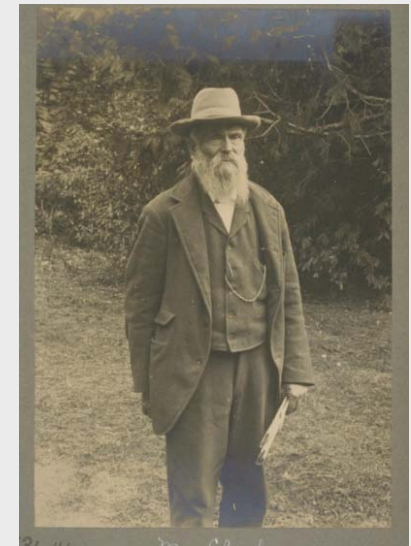
# Restoration of the Mariposa Grove Of Giant Sequoias Yosemite National Park

National Park Service  
U.S. Department of the Interior



## Project Milestones

<b>April 25, 2012</b>	<b>Public Open House –Update on Design Charettes/Draft Concepts</b>
May 2	Design Charette # 3
May (TBD)	Consultation site visit with Tribes
<b>May 30</b>	<b>Public Open House</b>
June 5/6	Choosing by Advantages (CBA) Workshop (Identify Preferred Alternative)
<b>June 27</b>	<b>Public Open House</b>
<b>August</b>	<b>Public Review DEIS (60 days) (Public Open House, Site Visit)</b>
December	Comment Analysis and EIS Revision
<b><u>2013</u></b>	
<b>February 2013</b>	<b>Final EIS published (anticipated)</b>
March	Record of Decision (anticipated)



# Restoration of the Mariposa Grove Of Giant Sequoias Yosemite National Park

National Park Service  
U.S. Department of the Interior



## Project Milestones



# Restoration of the Mariposa Grove Of Giant Sequoias Yosemite National Park

National Park Service  
U.S. Department of the Interior



Questions?