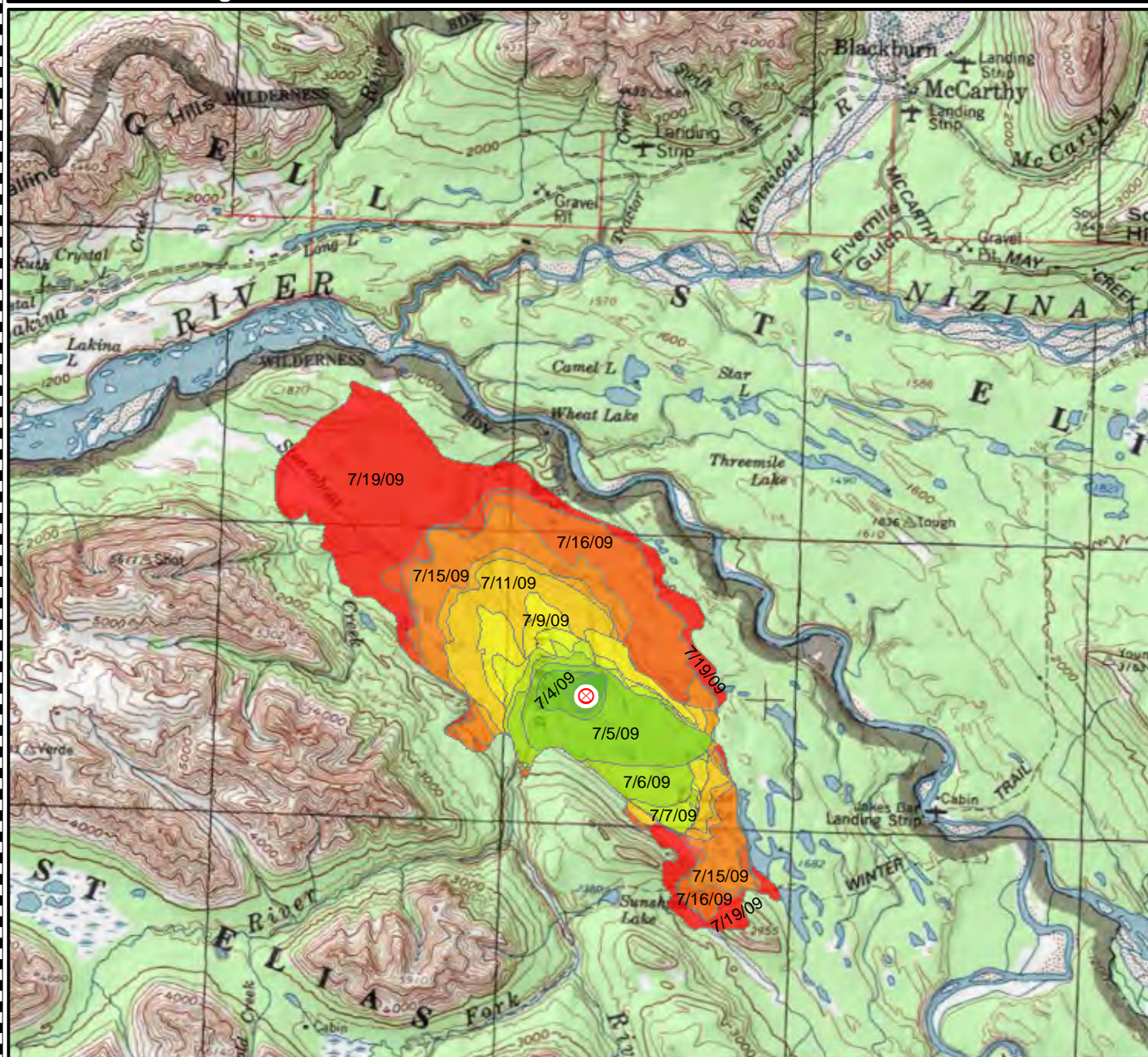


# Wrangell - St. Elias National Park and Preserve

## Chakina Fire Progression

July 20, 2009  
E098 / #362

Alaska Region  
National Park Service  
U. S. Department of the Interior



⊗ Fire Origin (7/2/2009)

### Chakina Fire Progression

Perimeter Date

7/2/2009	- 176 acres
7/3/2009	- 285 acres
7/4/2009	- 737 acres
7/5/2009	- 3,624 acres
7/6/2009	- 4,908 acres
7/7/2009	- 5,568 acres
7/8/2009	- 6,159 acres
7/9/2009	- 7,826 acres
7/11/2009	- 10,713 acres
7/12/2009	- 11,944 acres
7/15/2009	- 15,683 acres
7/16/2009	- 19,498 acres
7/17/2009	- 20,559 acres
7/19/2009	- 30,000 acres

National Park Service  
Alaska Regional Office  
Ranger Services Team

