

**NATIONAL PARK SERVICE  
U.S. Department of the Interior  
Shiloh National Military Park and National Cemetery  
Superintendent's Compendium**

**Approved:**

---

**Catherine Bragaw, Superintendent**

---

In accordance with applicable law and policy, and pursuant to the delegated authorities provided in Title 36, Code of Federal Regulations, Chapter 1 (“36 CFR”), the following compendium actions apply to all lands and waters administered by the National Park Service (NPS) within the boundaries of Shiloh National Military Park. This document is the written compilation of designations, closures, permit requirements, and other restrictions imposed under the discretionary authority of the Superintendent, as required by 36 CFR 1.7(b). Violating any provision in this Compendium may result in criminal penalties under 36 CFR 1.3.

The compendium actions in this document apply in addition to all other laws that apply to lands and waters administered by the NPS within the boundaries of Shiloh National Military Park. These include:

- Regulations in 36 CFR and other CFR titles such as Title 43, which contains regulations that apply on public lands administered by the Department of the Interior. The current version of the CFR can be found at [www.ecfr.gov](http://www.ecfr.gov). Click on “Title 36” and then “Chapter 1” to access 36 CFR.
- Statutes codified in U.S. Code, in particular provisions of Titles 16 and 54.

This Compendium is organized by the sections in 36 CFR that give the Superintendent discretionary authority take the compendium action. Written determinations that explain why each compendium action is necessary appear in this document in italicized print.

This Compendium is reviewed annually and revised as necessary. The park welcomes comments about its programs or activities. Please contact [shil\\_superintendent@nps.gov](mailto:shil_superintendent@nps.gov) if you have any questions or comments about the Superintendent's Compendium.

NPS regulations in 36 CFR 1.4 define certain terms that are used in 36 CFR. Other sections in 36 CFR may define terms that are used in those sections. To the extent any terms defined in the CFR are used in this Compendium, those definitions apply. In addition to terms defined in the CFR, the following terms used in this Compendium are defined as follows:

Day Use Area: any area consisting of or adjacent to paved parking lots, buildings, or toilet facilities that are open to the general public.

Uncrewed Aircraft: A device that is used or intended to be used for flight without the possibility of direct human intervention from within or on the device, and the associated operational elements and components that are required for the pilot or system operator in command to operate or control the device (such as cameras, sensors, communication links). This term includes all types of devices that meet this definition (e.g., model airplanes, quadcopters, and drones) that are used for any purpose, including recreation or commerce.

Walkway: Sidewalks, paths, trails, or hard-surfaced areas that are closed to the use of bicycles and motorized vehicles.

E-Bike: Refers to a two, or three-wheeled cycle, with fully operable pedals and an electric motor of less than 750 watts (1 hp.).

## **36 CFR 1.5 – CLOSURES AND PUBLIC USE LIMITS**

36 CFR 1.5(a)(1) Visiting hours, public use limits, and closures.

### Visiting Hours

- Shiloh National Military Park and the Corinth Civil War Interpretive Center are open from 8:00 am to 5:00 pm, except for federal holidays. Severe winter storms may cause the park to close until such time as it is safe for visitation.
- The grounds of Shiloh National Military Park, including the National Cemetery, Shiloh Indian Mounds NHL, and the Corinth Units will be open to visitors daily from sunrise to sunset.
- Park Administration Office will be open from 8:00 a.m. until 4:30 p.m. (Monday - Friday)

*Closing the park in the evening and on federal holidays is necessary because the NPS does not have sufficient staff to manage visitors during those times. Visiting hours are established based on the availability of staff, to ensure an enjoyable and safe visitor experience, and to assure adequate protection of park resources. After hours use, nighttime activity, and overnight parking create several impacts which would be inconsistent with the protection of park resources.*

### Closures

- Firing Range. (when being used for law enforcement training or qualification)

*Determination: This area is closed during official use to mitigate visitor injury.*

- Resource monitoring plots and survey sites.

*Determination: Adversely effects the data that is being recorded.*

- NPS residence areas.

*Determination: Only Park residents and their visitors are permitted in this area.*

- NPS maintenance facilities.

*Determination: Only Park employees are permitted in this area.*

- From sunset to sunrise, the use of park roads throughout Shiloh NMP are limited to through traffic (non-recreational) by local residents.

*Determination: The park closes at sunset, however some local residents rely on park roads to access their residences.*

- The Shiloh Education Center and Quonset outbuilding are closed to public access unless open and being used for a park-sponsored program activity or permitted public gathering.

*Determination: Only Park employees are permitted in this area.*

36 CFR 1.5(a)(2) – Designated areas, Conditions, or Restrictions on a use or activity.

#### Conditions or Restrictions on a Use or Activity

- All current and future designated American Bald Eagle nesting sites within Shiloh National Military Park are closed to visitors within the physical barrier limits set by the Superintendent.

*Determination: Bald Eagles are protected under the Bald and Golden Eagle Protection Act 16 U.S.C. 668-668d and violations of closure, taking, or disturbance will be enforced under the maximum penalty under the definitions of the Act referenced in 50 CFR 22.6. A violation of the Act can result in a fine of \$100,000 (\$200,000 for organizations), imprisonment for one year, or both, for a first offense. Penalties increase substantially for additional offenses, and a second violation of this Act is a felony.*

- Launching, landing, or operating an uncrewed aircraft (drone or similar) from or on lands and waters administered by the National Park Service within the boundaries of Shiloh National Military Park is prohibited except as approved in writing by the Superintendent.

*Determination: Operation of uncrewed aircraft has significant potential to create unreasonable noise and other intrusions that would adversely affect the experiences of visitors and the solemnity of the park. Careless operation of unmanned aircraft could result in collisions with resources, possibly causing damage.*

- Any and all types of recreational games and activities (i.e., football, baseball, frisbees, kite flying, pocket motorcycles, field games, flying model airplanes or operation of other radio-controlled models, rocket launching, throwing objects through the air (Frisbees, balls, etc.), except in the following areas: the picnic grounds, the residence area by NPS residents and their guests, and those areas authorized by permit through the Superintendent or designee.

*Determination: Ample opportunities exist outside the park for these activities. These types of activities are inconsistent with the preservation and protection of resource values and interfere with the peace and tranquility of the landscape and are inconsistent with the reason the park was created.*

- Walking, jogging, or standing on park roads, whether one-way or two-way, so as to interfere with traffic.

*Determination: This activity causes an unsafe condition for park visitors.*

- Picnicking, except in designated areas.

*Determination: Opportunities exist at the designated picnic area and at the park visitor center for this activity. Providing this opportunity is consistent with the preservation and protection of resource values at the listed Shiloh NMP sites.*

- The park is closed to camping.

*Determination: Opportunities exist outside the park for camping. There are no designated campgrounds in the park. Infrastructure does not support campgrounds. Camping is permitted only under certain circumstance by the Superintendent or designee.*

- The collecting of wood for personal use is prohibited.

*Determination: This activity is prohibited because fires and/or camping are not permitted within the park without a permit. This activity also poses the risk of causing resource damage and visitor injury.*

- The off-road operation of any motorized equipment or vehicle is not permitted throughout the park. All park trails and grounds are closed to off-road bicycling, equestrian use, and motorized recreation.

*Determination: Parking or driving off designated roadways or parking facilities can create opportunities for erosion and otherwise damage park resources. Soils throughout most of the park are highly erodible. The indicated uses could result in erosion that would damage natural or cultural resources.*

*The Superintendent may close any portion of the park to public access during prescribed fires, periods of ice, snow, or any other potentially hazardous conditions or emergencies. Roadways may be closed with gates, barricades, or other traffic control devices. Driving around or past these devices are prohibited.*

### **36 CFR SECTION 1.6 – ACTIVITIES THAT REQUIRE A PERMIT**

36 CFR 1.6(f) – Activities that require a permit.

The following activities are prohibited without a permit. Criteria for approving or denying permits are established by the applicable law (statutes and regulations) and policy. Permitted activities are subject to applicable terms and conditions. Information and applications to request a permit can be obtained at Shiloh National Military Park and submitted to the Superintendent via email to [shil\\_superintendent@nps.gov](mailto:shil_superintendent@nps.gov)

(f) The following activities require permits:

- Launching or landing uncrewed aircraft. 36 CFR 1.5
- Possession of historic or replica weapons. 36 CFR 2.4
- Specimen collection for research purposes. 36 CFR 2.5
- Operating a public address system. 26 CFR 2.12
- Operating a power saw. 36 CFR 2.12
- Delivery or retrieval of a person or object by parachute, helicopter, or other airborne means. 36 CFR 2.17
- Soliciting or demanding gifts, money, goods, or services. 36 CFR 2.37
- Using, possessing, storing, or transporting explosives or blasting agents; using or possessing fireworks or firecrackers. 36 CFR 2.38
- Conducting a special event. 26 CFR 2.50
- Conducting a public assembly or demonstration by groups more than 25 people. 36 CFR 2.52
- Selling or distributing printed matter and other message bearing items individually or by groups of more than 25 people. 36 CFR 2.52
- Running-at-large, herding, driving across, allowing on, pasturing or grazing of livestock, or using the park for agriculture. 36 CFR 2.60
- Residing on federal lands. 36 CFR 2.61
- Scattering of human ashes from cremation. 36 CFR 2.62
- Operating a vehicle exceeding load, weight, or size. 36 CFR 4.10

- Displaying, posting or distributing commercial notices or advertisements. 36 CFR 5.1
- Engaging in or soliciting any business. 36 CFR 5.3
- Commercial filming. 43 CFR 5.2
- Some still photography (if conditions are met). 43 CFR 5.2
- Using commercial vehicles on NPS-administered roads. 36 CFR 5.6
- Constructing or attempting to construct any building, structure, road, trail, path, or utility. 36 CFR 5.7
- Rights-of-way. 36 CFR part 14
- Examining ruins, excavated archaeological sites, and gathering of objects of antiquity. 43 CFR part 3
- Excavating or removing archaeological resources. 43 CFR part 7
- Collecting paleontological resources. 43 CFR part 49
- Burial in the national cemetery
- Disinterment of remains from the National Cemetery
- Memorialization

### **36 CFR SECTION 2.1 – PRESERVATION OF NATURAL, CULTURAL AND ARCHAEOLOGICAL RESOURCES**

36 CFR (a)(1) Possessing, destroying, injuring, defacing, removing, digging, or disturbing from its natural state any plants, wildlife, artifacts, or parts or products thereof is prohibited.

36 CFR (a)(7) Possessing or using a mineral or metal detector, magnetometer, side/bottom scan sonar, or other metal detecting device, or sub bottom profiler is prohibited.

36 CFR (a)(4) When camping has been authorized by the Superintendent, dead wood on the ground may be collected by the campers for use as fuel for campfires within the park area.

36 CFR (c)(2)(i) Fruits, nuts and berries may be collected and consumed for personal consumption not to exceed one (1) bushel per person, per season.

### **36 CFR SECTION 2.2 – WILDLIFE PROTECTION**

36 CFR 2.2(a)(1) The taking of wildlife by any means within the park’s boundaries is prohibited.

36 CFR 2.2(d) The transportation of legally taken wildlife that occurs outside of park land but may require the transport of that legally taken wildlife across park land by traveling on park roads commonly open and used for local across-park commuter travel is permitted.

*Determination: Federal and state law enforcement officers possess authority to stop, detain, and investigate any incident of wildlife transport on park roads that may be*

*encountered to ensure the safety of park wildlife and confirm the animals being transported were legally taken off park lands.*

36 CFR 2.2(e) All areas within park boundaries are closed to the use of artificial light to view wildlife.

*Determination: After hours use of artificial light and nighttime activity create a number of impacts that would be inconsistent with the protection of park wildlife. The Superintendent may authorize the use of artificial light for scientific and resource purposes.*

### **36 CFR SECTION 2.3 – FISHING**

36 CFR 2.3(a) Fishing in the following areas is prohibited: Bloody Pond, Water Oaks Pond, and all creeks located within the park.

*Determination: Ample opportunities exist outside the park for these activities. These types of activities at the above listed sites are inconsistent with the preservation and protection of resource values and interfere with the peace and tranquility of the landscape and are inconsistent with the reason the park was created.*

### **36 CFR SECTION 2.10 – CAMPING AND STORAGE**

- Camping or overnight use is limited to special event personnel and restricted to locations approved by the Superintendent.
- Permits for camping may be issued for educational groups or organizations using the park for educational purposes as part of the school curriculum.

*Determination: Opportunities exist outside the park for camping. There are no designated campgrounds in the park. Infrastructure does not support campgrounds. Camping is permitted only under certain circumstance by the Superintendent or designee.*

### **36 CFR SECTION 2.11 – PICKNICKING**

Picnicking is allowed in historic Sowell Field, the park's designated picnic area on Shiloh battlefield. In addition, picnicking is permitted at the small, designated picnic area located west of the parking lot at the Corinth Civil War Interpretive Center in Corinth, Mississippi.

*Determination: Opportunities exist outside the park for this activity. There are no designated picnic areas except those listed above. Providing this opportunity would be inconsistent with the preservation and protection of resource values in area other than those designated sites listed above.*

### **36 CFR SECTION 2.13 – FIRES**

Fires are prohibited except for the following activities and locations authorized by the Superintendent:

- Cooking on grills at the picnic area in Sowell Field.
- Cooking and heating at permitted Living History locations.
- Cooking and heating at permitted campsites.
- Prescribed burns.

Campfires will be made on the surface of the ground or in metal fire rings provided by the park.

*Determination: Limitations on the use of fire are necessary to prevent adverse impacts to resources, as well as to prevent fire from escaping to adjoining lands and residential areas.*

### **36 CFR SECTION 2.15 – PETS**

36 CFR 2.15(a) Allowing a pet to threaten visitors by barking, growling, lunging, or other noise or action is prohibited. Pets are not allowed inside park facilities or inside the National Cemetery. All pets must be on a leash no longer than 6 feet in length.

36 CFR 2.15(b) Service animals are not subject to the park's pet policies and, when accompanying an individual with a disability, they are allowed wherever visitors are allowed.

1. A service animal means any dog or miniature horse that is individually trained to do work or perform tasks for the benefit of an individual with a disability, including a physical, sensory, psychiatric, intellectual or other mental disability.
2. Any animal other than an individually trained dog or miniature horse is not considered a service animal and is subject to the park pet policies.

*Determination: Limitations on pets within the park are necessary to ensure a positive visitor experience for all, as well as to prevent possible resource damage or visitor injury that could be created by uncontrolled pets.*

### **36 CFR SECTION 2.21 – SMOKING**

Smoking (e.g. using organic and/or E-device material) is not permitted inside any government building or within Shiloh National Cemetery.

Smoking is prohibited within 25-feet of any entrance to a government building and the entrances to Shiloh National Cemetery.

Smoking is prohibited at all park events and gatherings, except in designated areas.



The discarding of smoking material (e.g. organic and/or E-device) onto park grounds are illegal acts of littering and subject to citation.

Smoking is permitted in government residences occupied by permanent park employees and in designated smoking areas associated with Park Maintenance compounds. Smoking is not permitted inside any government residence housing temporary occupants such as seasonal employees, detailed permanent employees, SCAs, AmeriCorps, and volunteers.

### **36 CFR SECTION 2.35 - ALCOHOLIC BEVERAGES AND CONTROLLED SUBSTANCES**

The consumption and possession of alcoholic beverages is prohibited in the park, except in park residences and at special park events when authorized in advance by the Superintendent.

*Determination: Because of the solemnity of the battlefield landscape, consuming alcohol goes against the mission of the park, and is inconsistent with the reason the park was created.*

### **36 CFR SECTION 2.38 – EXPLOSIVES**

Using, possessing, storing, or transporting explosives, blasting agents or explosive materials are prohibited. Using or possessing fireworks is prohibited.

### **36 CFR SECTION 2.50 – SPECIAL EVENTS**

All non-NPS events will be required to obtain a permit from the Superintendent or designee, and a fee or bond may be required of the group. There will be a meaningful association between the park area and the event(s), and the observance contributes to visitor understanding of the significance of the park area. The amount of the fee will be determined at the time of permit issuance. The permit must be applied for at least two weeks in advance of the event.

### **36 CFR SECTION 2.51 – DEMONSTRATIONS AND DESIGNATED AVAILABLE PARK LANDS**

36 CFR 2.51(c)(2) – Designated Locations.

Public assemblies, meetings, gatherings, demonstrations and alike will be authorized by permit obtained from the Superintendent prior to the event requested. The permit must be applied for at least two weeks in advance, however, First Amendment demonstrations of 25 people or less are allowed within the park areas designated as available under paragraph 2.51(c)(2) without a permit.

Public assemblies associated with First Amendment activities may be conducted at the following First Amendment areas designated by the Superintendent:

**Shiloh Battlefield Unit:**

1. For activities of 25 people or less, at Silversparre’s Illinois Battery Monument (located within sight of the Visitor Center, roughly 30 yards southwest of the entrance to the National Cemetery).
2. For activities of 26 people or more, at south Chambers field, 1/3 mile west of the Shiloh Battlefield Visitor Center on the Savannah – Pittsburg Landing (main entrance) road.

**Corinth Battlefield Unit:**

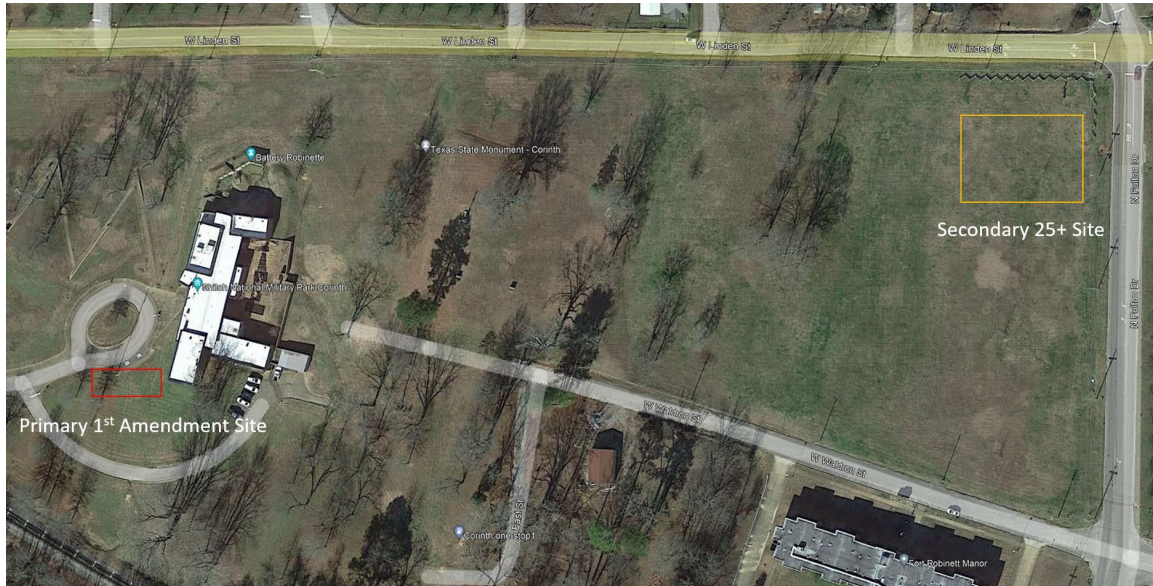
1. For activities of 25 people or less, on level ground immediately south of the Corinth Civil War Interpretive Center flagpole.
2. For activities of 26 people or more, on the level ground located east of historic Battery Robinett, on Interpretive Center grounds lying between the city streets of Linden (north), Fulton (east) and Waldron (south).

**Maps – Shiloh Battlefield Unit**





## Maps – Corinth Battlefield Unit



### **36 CFR SECTION 2.62 – MEMORIALIZATION**

- (a) Installation of a monument, memorial, tablet, structure, or other commemorative installation in the park is prohibited without the authorization of the Director.
- (b) The scattering of human ashes from cremation is prohibited, except by permit.

### **36 CFR SECTION 3 - BOATING AND WATER ACTIVIES**

#### **36 CFR SECTION 3.8 – PROHIBITED OPERATION**

Launching or operating vessels upon or within the water areas of Shiloh National Military Park is prohibited. Vessels may operate on the Tennessee River in accordance with state and federal law.

#### **36 CFR SECTION 3.16 – SWIMMING AND BATHING**

Swimming, tubing, bathing, diving, and wading in waters within Shiloh National Military Park are prohibited.

*Determination: This activity presents a risk of bodily injury to the visitor and a liability of visitor injury to the park.*

## **36 CFR SECTION 4 - MOTOR VEHICLE LAWS**

### **36 CFR SECTION 4.10 – TRAVEL ON PARK ROADS AND DESIGNATED ROUTES**

All vehicle traffic is limited to paved park roads and the loop road adjacent to the Wisconsin Monument. Parking is permitted along road edges immediately adjacent to paved surfaces. However, parked vehicles may not obstruct or interfere with the free flow of traffic. No roadside parking is allowed beginning at the Indian Mounds Pavilion and continuing east for one-quarter mile.

### **36 CFR SECTION 4.21(c) – SPEED LIMITS**

The maximum speed limit on Tennessee State Highway 22 and Highway 142 is 45 mph. The speed limit on all other park roads is 25 mph unless otherwise posted.

### **36 CFR SECTION 4.30 – BICYCLES**

#### **36 CFR 4.30(i) – Electric Bicycles**

The term “e-bike” means a two, or three-wheeled cycle, with fully operable pedals and an electric motor of less than 750 watts (1 hp.). Class 1 and Class 2 electric bicycles are allowed in the following locations where traditional bicycles also are allowed:

- E-bikes are allowed in Shiloh National Military Park where traditional bicycles are allowed including park roads and parking areas.
- E-bikes are prohibited where traditional bicycles are prohibited.
- Except where use of motor vehicles by the public is allowed, using the electric motor to move an e-bike without pedaling is prohibited.

A person operating an e-bike is subject to the following sections of 36 CFR part 4 that apply to the use of traditional bicycles: sections 4.12, 4.13, 4.20, 4.21, 4.22, 4.23, and 4.30(h)(2)-(5).

Except as specified in this Compendium, the use of an e-bike within Shiloh National Military Park is governed by State law, which is adopted and made a part of this Compendium. Any violation of State law adopted by this paragraph is prohibited.

*Allowing electric bicycles on roads and parking areas will not create new, adverse impacts to resources or visitors because those locations are already used by motor vehicles and traditional bicycles. Electric bicycles provide a recreational opportunity for visitors who want to ride a bicycle but might not otherwise because of physical fitness, age, or convenience, or on terrain with changing elevations. Class 3 electric bicycles, which allow the motor to assist pedaling up to 28 mph, would create unacceptable risks to visitor safety on roads and parking areas in the park due to potential conflicts with heavier and faster moving vehicles, and with other electric bicycles and traditional*

*bicycles, which travel at slower speeds. Accidents that occur at higher speeds increase the risk of serious injury or death.*

### **Shiloh National Military Park CCTV Policy Statement**

In accordance with National Park Service Law Enforcement Reference Manual 9 (RM-9), notice is hereby given that Shiloh National Military Park may use Closed Circuit Television (CCTV) security camera monitoring.

The park's use of Closed-Circuit Television (CCTV) for law enforcement and security purposes will only be to visually monitor public park areas and public activities where no constitutionally protected reasonable expectation of privacy exists. Such CCTV use - which will have adequate privacy and First Amendment safeguards - will be to help ensure public safety and security; facilitate the detection, investigation, prevention, and deterrence of terrorist attack and crime; help ensure the safety of citizens and officers; help assist in the proper allocation and deployment of law enforcement and public safety resources; and help facilitate the protection of the innocent and the apprehension and prosecution of criminals. (RM-9, 26.1)

This policy does not restrict the official use of CCTV in government administrative areas, including administrative buildings, jail holding facilities (RM-9, 26.3.7), revenue collection sites, etc., where the government may record/monitor its facilities. For example, the government may perform unrestricted video/audio recording at revenue collection points (entrance stations, visitor center counters, etc.). This policy does not restrict the use of an Audio-Visual Recording Device (AVRD) in patrol vehicles or officer- worn recording devices used by commissioned rangers. (RM-9, 26.1)

Operation of CCTV cameras, maintenance of recorded images and use of recorded images will be in accordance with NPS and Department policy and applicable laws and regulations. (RM-9, 26.1-26.4) No person will be targeted or monitored merely because of race, religion, gender, sex, disability, national origin, or political affiliation or views. (RM-9, 26.4.2)

Nothing in this policy statement is intended to create any rights, privileges, or benefits not otherwise recognized by law.