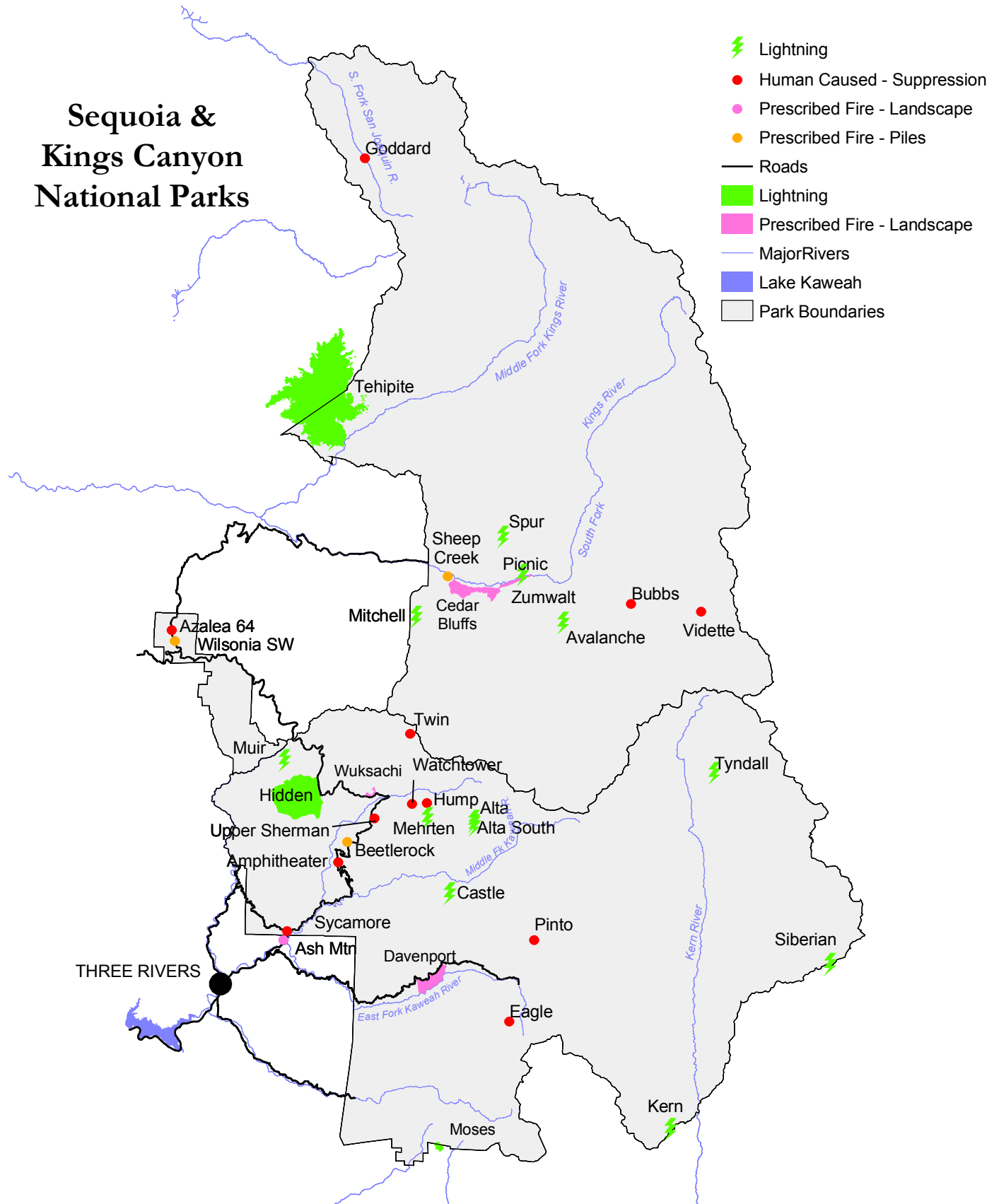


# Fire Atlas 2008

## Sequoia & Kings Canyon National Parks



# Fire Atlas – 2008

## Sequoia and Kings Canyon National Parks December 31, 2008

Total acreage burned by all causes: 10052.55 acres

Total number of fires: 35

Mechanical treatments: 1 (13 acres)

### Wildland Fires (7,954.55 acres)

Unplanned fires started by humans or lightning. Human-caused fires are always suppressed. Lightning-caused fires are evaluated to determine the appropriate management strategy. These fires are managed considering safety, community protection, smoke, etc. Response ranges from monitoring to suppression.

- **Lightning Fire (7952.95 acres)**

In 2008, there were fourteen lightning fires including the *Tehipite Fire* which burned 4,140 acres in Kings Canyon National Park (and 7,456 acres on the Sierra National Forest) and the *Hidden Fire* in Sequoia National Park that grew to 3,685 acres. Other fires: *Alta, Alta South, Tyndall, Siberian, Avalanche, Kern, Spur, and Mitchell, Moses Merhten, Muir, and Castle.*

- **Human-Caused Wildfires (1.6 acres)**

Human caused unplanned and unwanted wildfires that were aggressively suppressed. In 2008, there were 13 human-caused fires totaling 1.6 acres. Fire names: *Hump, Sycamore, Bubbs, Twin, Goddard, Azalea 64, Amphitheater, Upper Sherman, Vidette, Pinto, Picnic, Eagle, and Watchtower.*

### Prescribed Fires (2098 acres)

Fires planned and set by NPS staff in designated areas to reduce hazardous fuels and/or restore natural conditions. This also includes “pile burning” mechanical thinning projects. In 2008, there were eight completed prescribed fires:

Ash Mountain	Sequoia NP	25	acres
Beetle Rock Piles	Sequoia NP	2	acres
Wilsonia SW Piles	Kings Canyon NP	9	acres
Sheep Creek	Kings Canyon NP	14	acres
Zumwalt	Kings Canyon NP	200	acres
Cedar Bluffs	Kings Canyon NP	1006	acres
Wuksachi	Sequoia NP	60	acres
Davenport	Sequoia NP	782	acres

### Mechanical Fuel Reduction Projects (13 acres)

Hazardous fuels are removed around communities and structures to create defensible space. Crews use chainsaws to cut small trees and pile dead and down materials. The piles are burned in the winter. In 2008, the *Quarry Thinning Project* was completed near the General Sherman Tree in Giant Forest, Sequoia National Park. 13 acres.