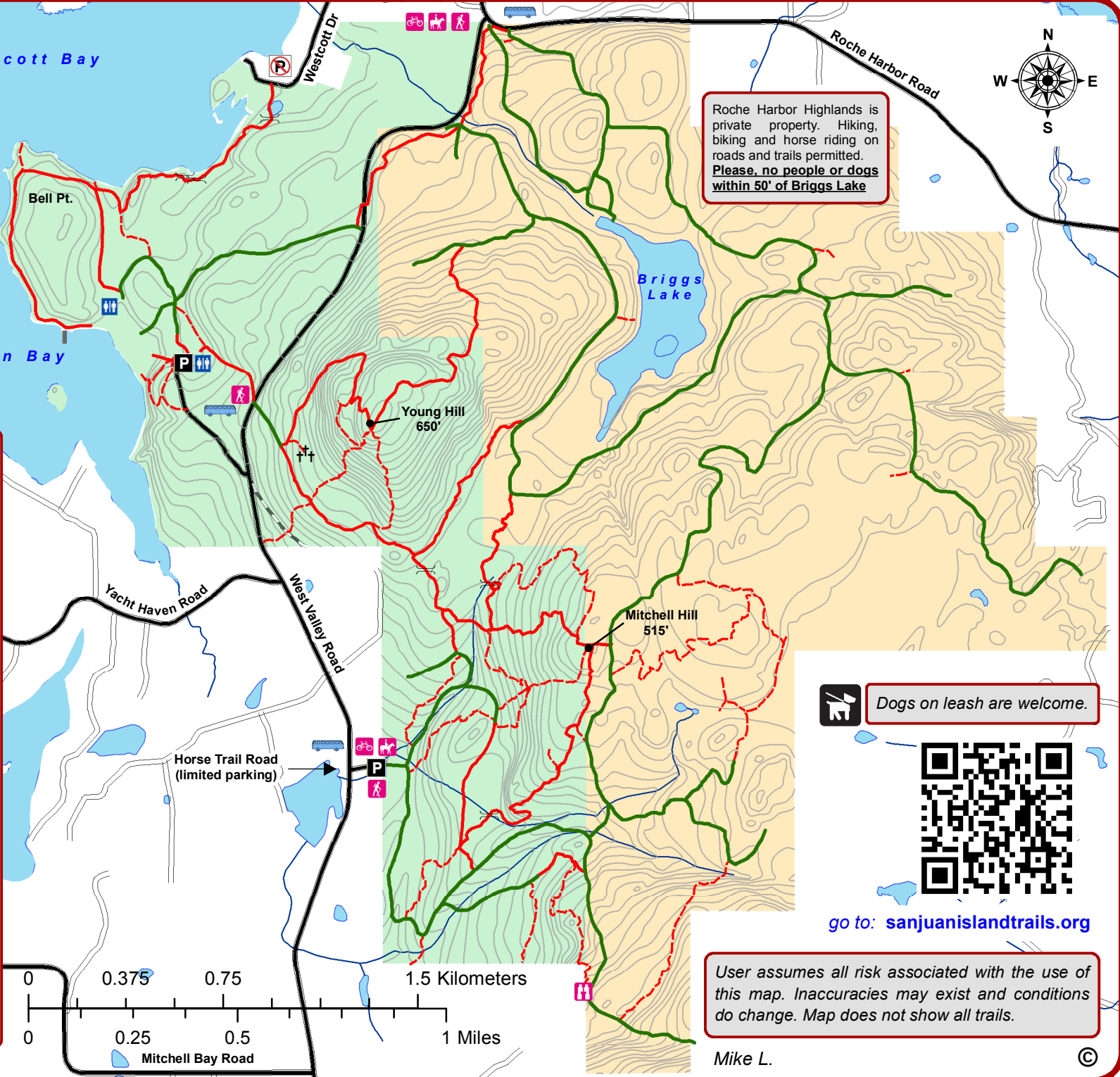


Roche Harbor Highlands is private property. Hiking, biking and horse riding on roads and trails permitted. **Please, no people or dogs within 50' of Briggs Lake**

### Legend

- English Camp/ Mitchell Hill
- Roche Harbor Highlands
- Private Property
- Service Roads
- Main Trails
- Secondary Trails
- Old Military Road
- P Parking
- ♿ Restrooms
- Puncheon or Bridge
- †† Cemetery
- 20ft contours
- 🐎 Horseback Riding
- 🚶 Hiking
- 🚲 Bike Riding
- 👁 Viewpoint
- 🚌 Bus, seasonal (flag stop)



Dogs on leash are welcome.



go to: [sanjuanislandtrails.org](http://sanjuanislandtrails.org)

User assumes all risk associated with the use of this map. Inaccuracies may exist and conditions do change. Map does not show all trails.