



# Short Wave

San Juan Island National Historical Park

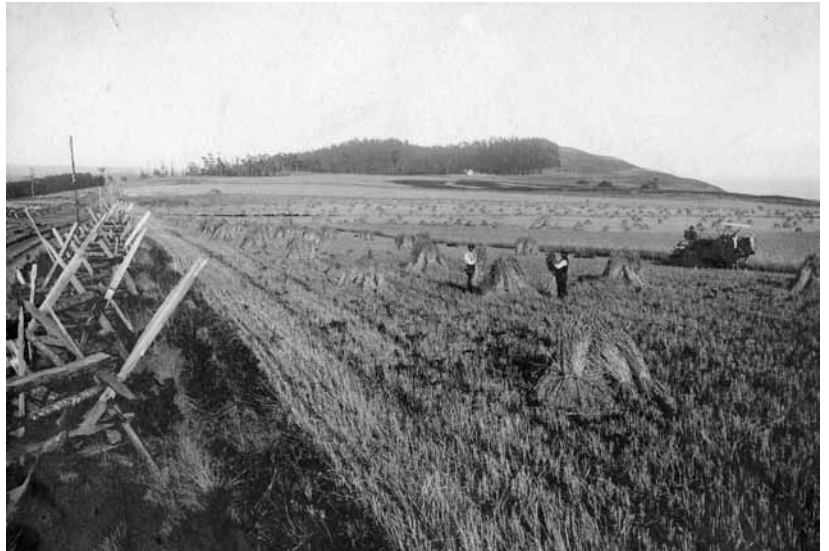
[www.nps.gov/sajh](http://www.nps.gov/sajh)



## THIS WEEK: AUGUST 15-21, 2011

### Special Program

**A** **Prairie's Life** — In a region known for its abundant rainfall, lush forests and coastal climate, American Camp's prairie is unique in the Puget Sound/Salish Sea Basin. Join Park Historian Mike Vouri and Integrated Resources Chief Jerald Weaver for a journey across time as they explore changes in this complex resource from the glacier to today's restoration efforts. **7 to 8:30 p.m., Monday, August 22, San Juan Island Library.**



### San Juan Island's erratics mark deep time



Without a doubt the most famous glacial erratic at American Camp is Robert's Rock, named for 2nd Lt. Henry M. Robert, who engineered the redoubt.

**S**cattered throughout the San Juan Islands large boulders, called glacial erratics, dot the landscape. Erratics are large pieces of rock, carried along on the glaciers of the last ice age, between 11,000 and 18,000 years ago.

These vast ice sheets, nearly 5,000 feet thick above the San Juans, incorporated enormous amounts of broken rock and rubble as they pushed south. Later, as the glaciers began to melt and retreat northward, they could no longer support the weight of the

boulders. As a result they were dropped, hundreds of miles from point of origin in some cases.

The prairie at American Camp is full of erratics, with perhaps the most famous being Robert's Rock, a huge chunk of granite next to the redoubt. Henry Martyn Robert, who as a young lieutenant constructed the earthen fort, would complete a long career as the US Army's Chief of Engineers. Later, Robert would write a book, based partially on his experiences on San Juan Island, *Robert's Rules of Order*.

### Don't Forget

**A Weaving Weekend** — Weavers from throughout San Juan Island and Washington State will gather for the weekend to demonstrate how European and American Indian techniques melded to create woven objects and clothing unique to the Pacific Northwest. Cowlitz Nation weaver Judy Bridges and Fort Nisqually interpreter and storyteller Karen Haas will show how it was done with all-natural fibers, including wild reeds. **All day, Saturday and Sunday, August 27 and 28, English Camp parade ground.**



English Camp's ospreys fledged last week, all three chicks testing their wings by circling the nest that rests atop the ancient Douglas fir snag overlooking the parade ground. This shot was taken by English Camp volunteer park host Carole Burns.

English Camp Visitor Center  
3905 West Valley Road  
(360) 378-4409, Open 9-5 Daily

*For dates and times of weekly programs go to [www.nps.gov/sajh](http://www.nps.gov/sajh) or visit us on Facebook or Twitter.*

American Camp Visitor Center  
4668 Cattle Point Road  
(360) 378-2240, ext. 2233, Open 9-5 daily