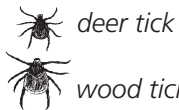


Enjoy the River Safely

- Wear your life jacket. Make sure your child wears a life jacket!
- Use alcohol responsibly. Many river accidents involve alcohol.
- Wear sunscreen, sunglasses, and a hat to prevent sunburn. Water reflects the rays of the sun giving you a double dose of ultraviolet light.
- Avoid trees that have fallen in the river. They can catch and overturn your vessel.
- Don't jump from cliffs, bridges, or trees.
- Protect your feet with river shoes, water sandals, or old shoes. Fish hooks, glass, and rocks can injure your feet.
- Bring your own drinking water. Treat river water before drinking to avoid giardia, a serious stomach irritant.
- Blastomycosis is a fungal infection that is commonly contracted by dogs and sometimes by humans. Avoid digging in moist soils.
- Check for ticks often and know the symptoms of Lyme disease. Deer ticks are common along the Riverway and some carry the bacteria that cause the disease.
- Know how to identify poison ivy and avoid contact.



deer tick

wood tick



poison ivy

National Park Service St. Croix National Scenic Riverway



St. Croix River Map 5: Riverside Landing to Sand Creek Landing



Sounds of tradition carry to the river near Danbury, Wisconsin, in late summer. The St. Croix Band of Chippewa celebrate the harvest by presenting the Wild Rice Pow Wow. People come to compete in dance, sing traditional songs, and visit over meals of native food.

Nutritious wild rice was and continues to be a prominent and delicious feature in many meals. This cereal grows tall and naturally in the sandy substrate of area lakes and rivers, including the St. Croix. European-American fur traders labeled the St. Croix valley as the “Folle Avoine country,” using the French words for wild rice to characterize the region and to emphasize its importance.

Discover clean water, lush landscapes, and quiet solitude along the St. Croix National Scenic Riverway, a national park that with your help protects 255 miles of wild and scenic river corridor.

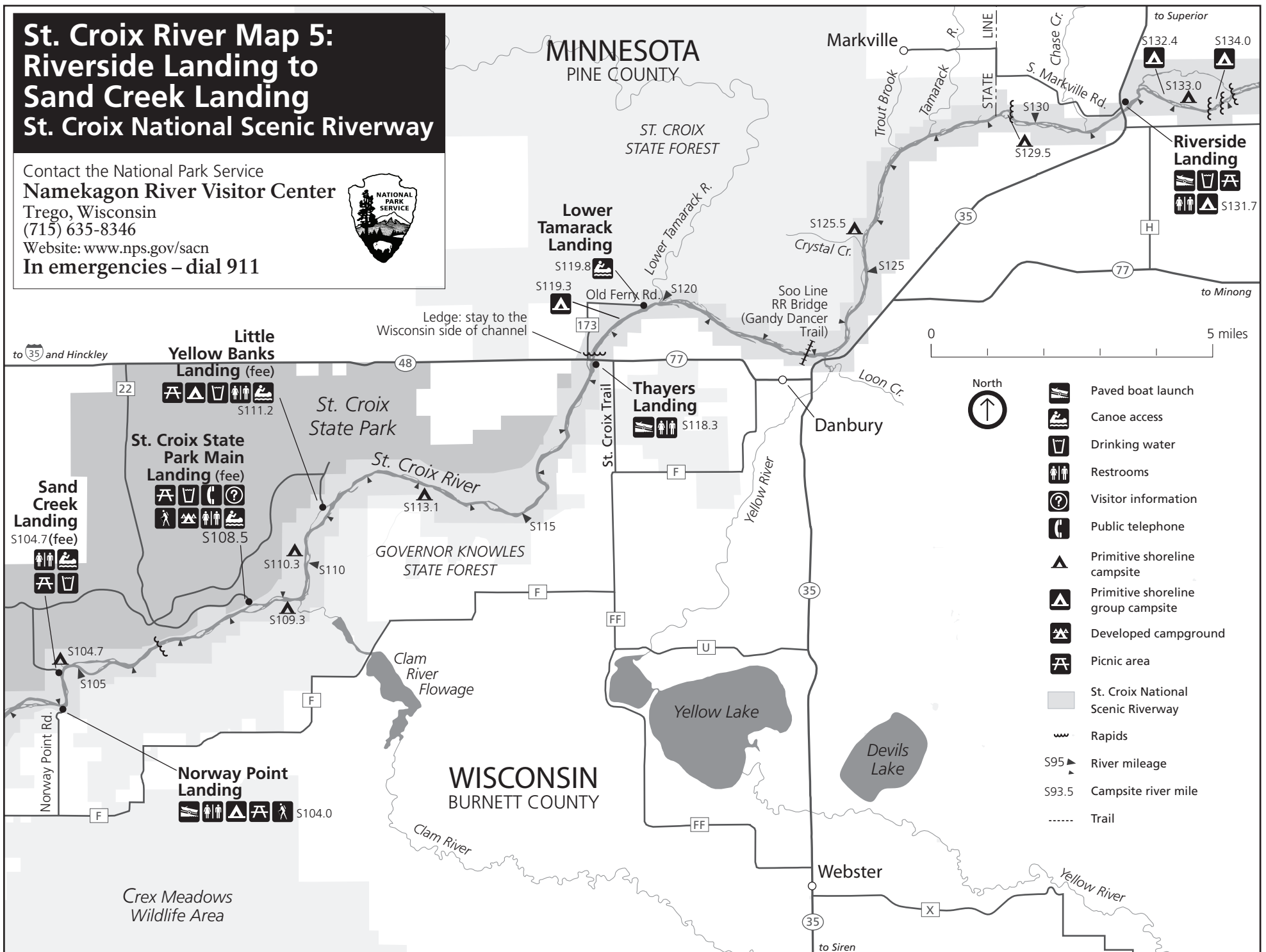


Top Riverway Regulations

- Approved life jackets for each person are required on your vessel. Children under 13 are required to wear a life jacket.
- Please do not bring glass containers to the Riverway. Broken glass cuts bare feet.
- Disposing human waste into the river is prohibited.
- Jumping from cliffs, bridges, or trees is illegal and dangerous.
- Open campfires are allowed only in metal fire rings. Campfires must be out and cold before you leave the area.
- The cutting of live vegetation is strictly prohibited. Dead and down wood may be collected for campfires from shoreline areas, however, it cannot be collected from islands.
- Possession of firewood that originates more than 25 miles from the Riverway is prohibited.
- Individual campsites accommodate a maximum of 8 people and 3 tents. Group sites accommodate a maximum of 16 people and 6 tents.
- Littering is not allowed. Carry out all trash.
- It is illegal to shoot or possess fireworks on lands and waters within the Riverway.
- Collecting freshwater mussels, mussel shells, wildflowers, and historical artifacts is prohibited.
- Quiet hours are 10:00 p.m. to 6:00 a.m.

St. Croix River Map 5: Riverside Landing to Sand Creek Landing St. Croix National Scenic Riverway

Contact the National Park Service
Namekagon River Visitor Center
 Trego, Wisconsin
 (715) 635-8346
 Website: www.nps.gov/sacn
In emergencies – dial 911



- Paved boat launch
- Canoe access
- Drinking water
- Restrooms
- Visitor information
- Public telephone
- Primitive shoreline campsite
- Primitive shoreline group campsite
- Developed campground
- Picnic area
- St. Croix National Scenic Riverway
- Rapids
- S95 River mileage
- S93.5 Campsite river mile
- Trail