



Rocky Mountain National Park Aquatic Disinfection Guidelines

Have you visited an area where whirling disease, chytrid fungus, or New Zealand mudsnails are known or suspected to exist?

Are you moving within a drainage to sites that are more than 2.5 miles (4km) apart?

Are you visiting a new drainage?

Is this your first time in Rocky Mountain National Park?

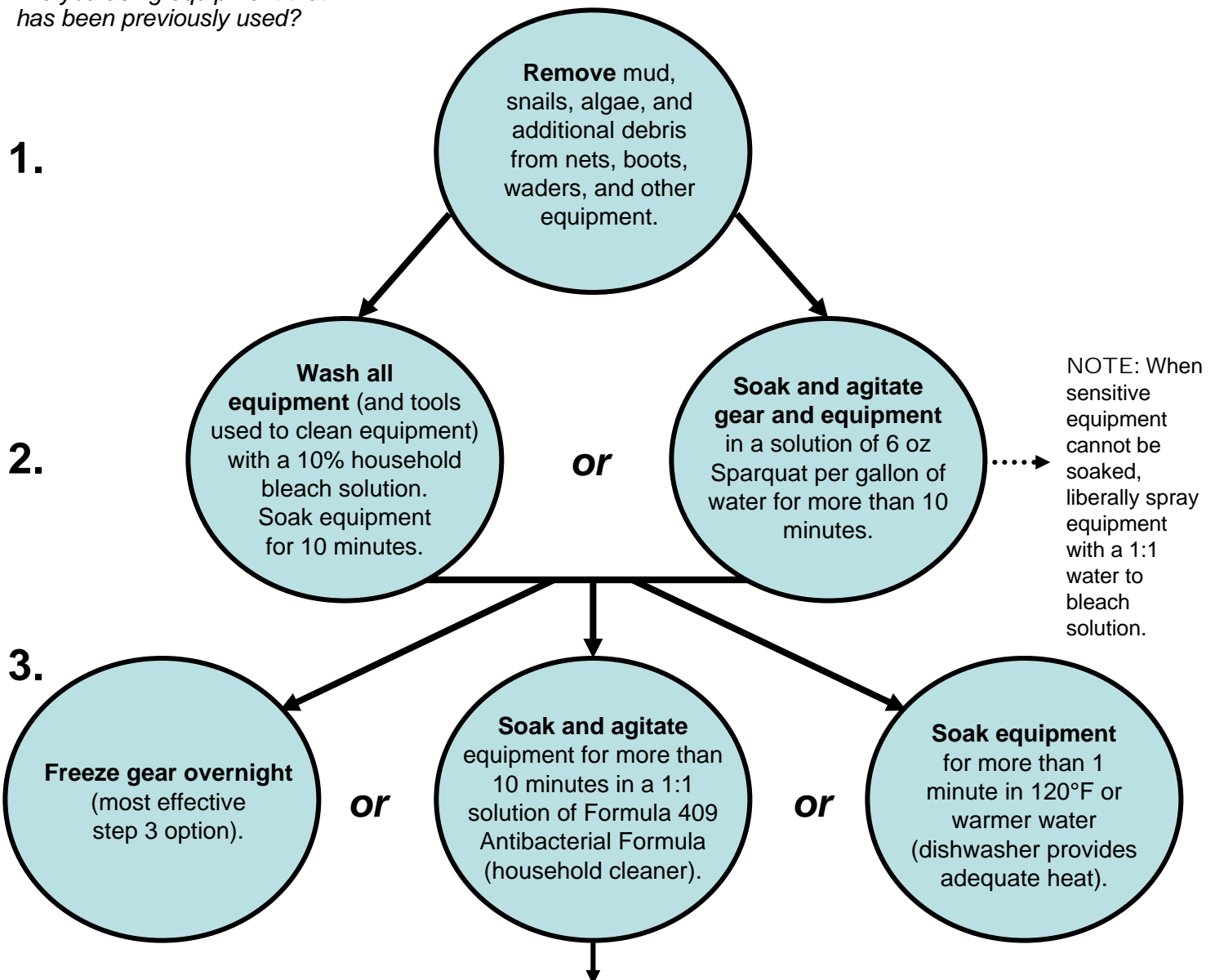
Are you using equipment that has been previously used?

If you answered **YES** to any of these questions, you are **REQUIRED** to disinfect any equipment that has had contact with water and/or soil.

Do not use felt wading soles (**highly recommended**). If felt wading soles are used, freeze the waders as outlined in step 3 (**required**).

Start at the top of a drainage and work downstream (**highly recommended**). Aquatic threats are typically located in lower elevation areas and this will minimize spread.

The Required Steps



Recommended: Allow equipment to air dry, preferably in direct sunlight at 84°F or warmer for more than 4 hours.