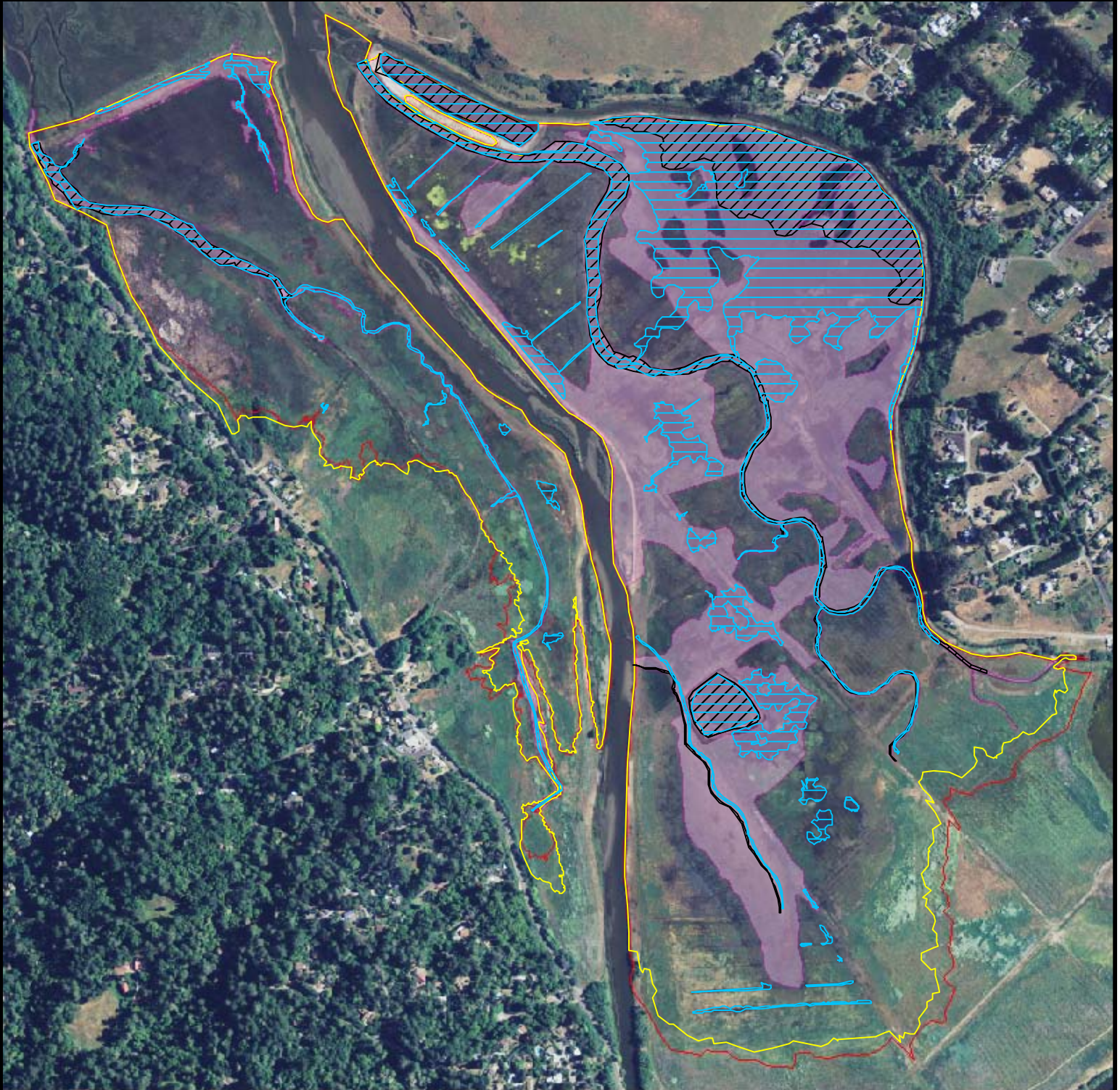


2008 and 2009 Tidelines

Giacomini Wetland Restoration Project



Location Map



National Park Service Point Reyes National Seashore/ Golden Gate National Recreation Area Marin County, CA



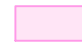


Subtidal and high tide extents were mapped using a combination of aerial photography and direct observation. Handheld GPS units were used to collect data.

Subtidal areas were predicted using information provided by KHE (2006), including topographical elevations, tidal datum information, and hydraulic modeling.

In 2009, low tides ranged from 1.88 feet to 2.69 feet, and high tides ranged from 5.77 to 6.34 feet MLLW at Inverness

In 2008, low tides ranged from -0.44 to -1.74 feet and high tides ranged from 6.26 to 6.64 feet MLLW at Inverness.



-  Low Tide 2009
-  High Tide 2009
-  Low Tide 2008
-  High Tide 2008
-  Predicted Subtidal Extents