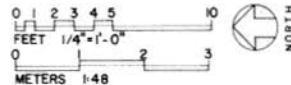


FIRST FLOOR PLAN

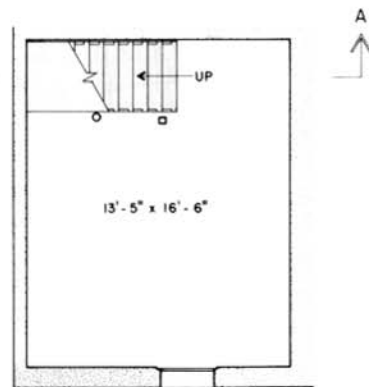
NOTES

- ALL INTERIOR AND EXTERIOR DOORS REMOVED
- SOUTH PORCH FLOOR SCORED CONCRETE
- BASEMENT FLOOR, CONCRETE

SCALE



BASEMENT PLAN
UNDER SW CORNER OF HOUSE



DRAWN BY STEVEN M. WIESENTHAL

DOLORES VALLEY PROJECT 1981
NATIONAL ARCHITECTURAL AND ENGINEERING RECORD
ROCKY MOUNTAIN REGIONAL OFFICE, NATIONAL PARK SERVICE
UNITED STATES DEPARTMENT OF THE INTERIOR

NAME AND LOCATION OF STRUCTURE
THE KUHLMAN-PERIMAN RANCH - HOUSE
COUNTY ROAD 28 DOLORES VICINITY MONTEZUMA COUNTY COLORADO

SURVEY NO.
HABS
CO-39

HISTORIC AMERICAN
BUILDINGS SURVEY
SHEET 3 OF 14 SHEETS

CHECKED BY
SHEET NUMBER