
Illustrations with Captions

64

Figure 1 Drawing, First Floor and Basement Plan,
As Constructed, No. 170/25,900
Sheet 2 of 14, December 12, 1924, Union Pacific System.

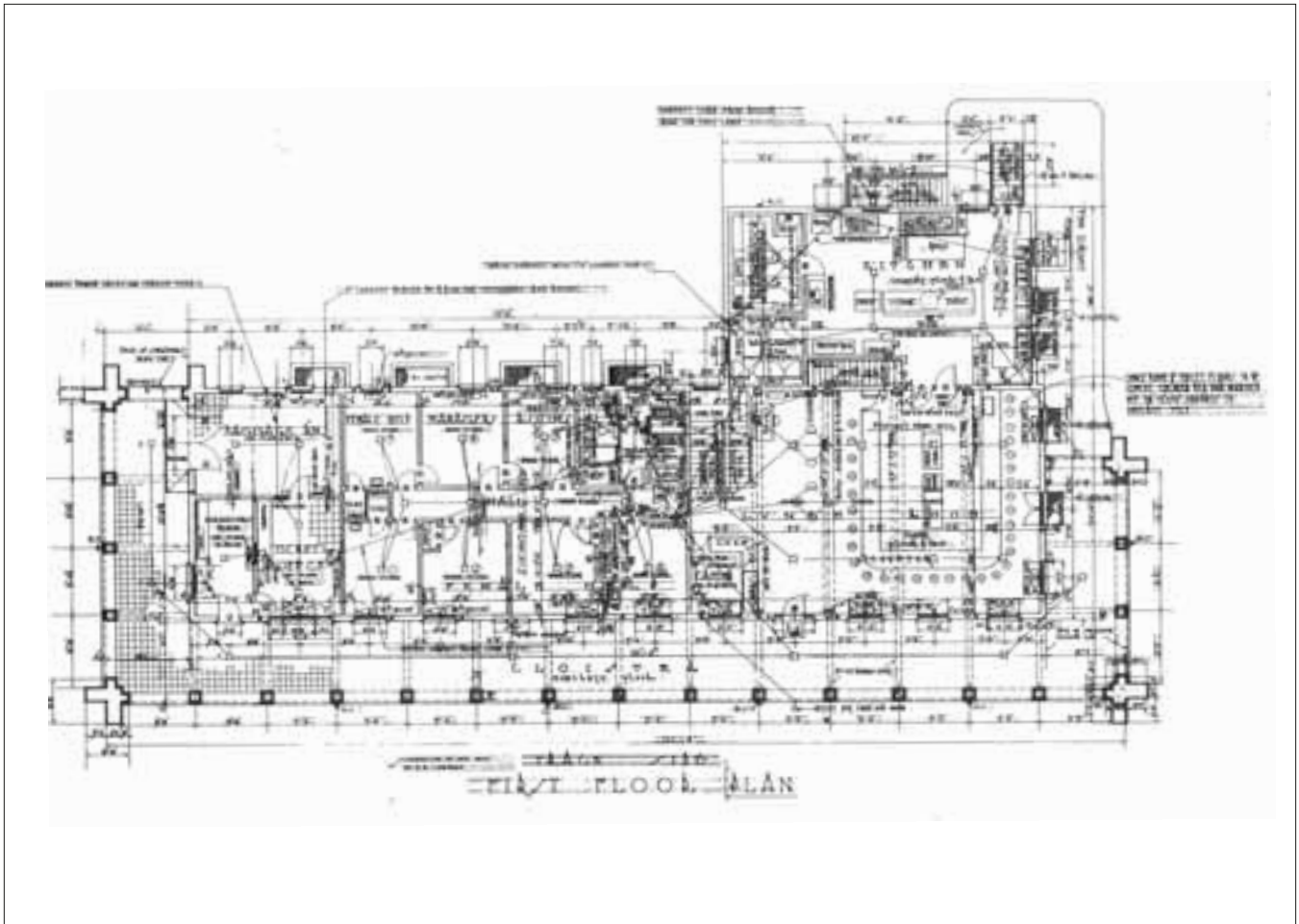


Figure 2 Drawing, Exterior Details,
As Constructed, No. 170/25,900,
Sheet 8 of 14, December 12, 1924, Union Pacific System

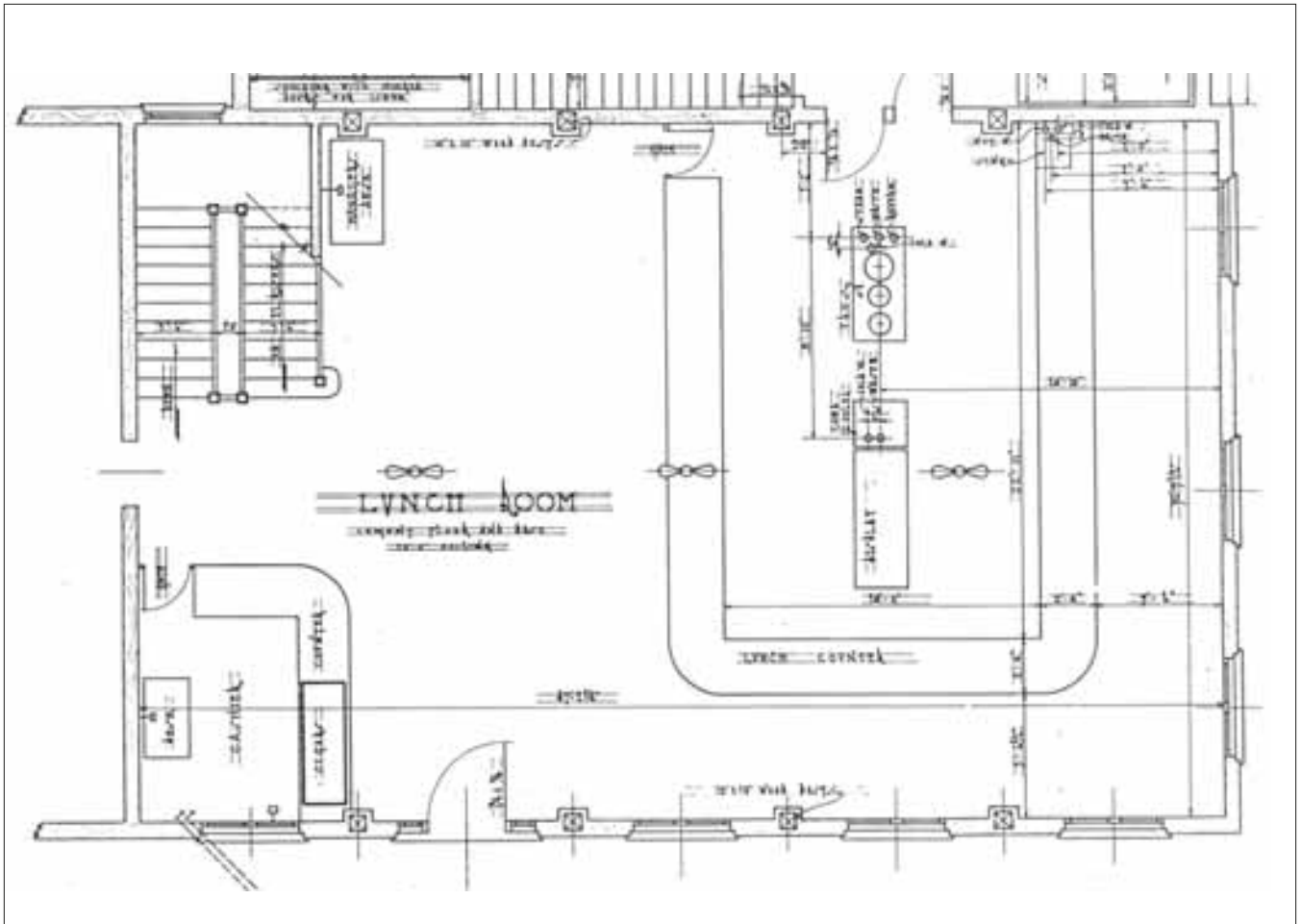


Figure 3 Drawing, Second Floor and Roof Plan,
As Constructed, No. 170/25,900,
Sheet 3 of 14, December 12, 1924, Union Pacific System

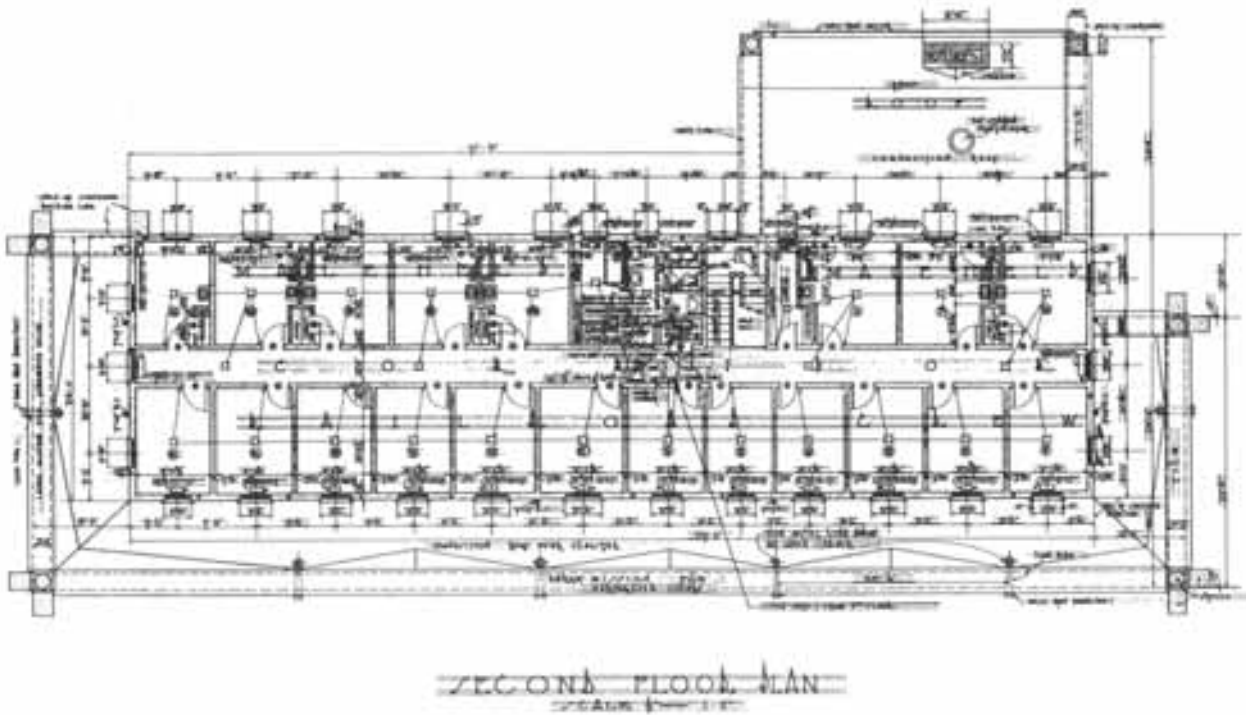
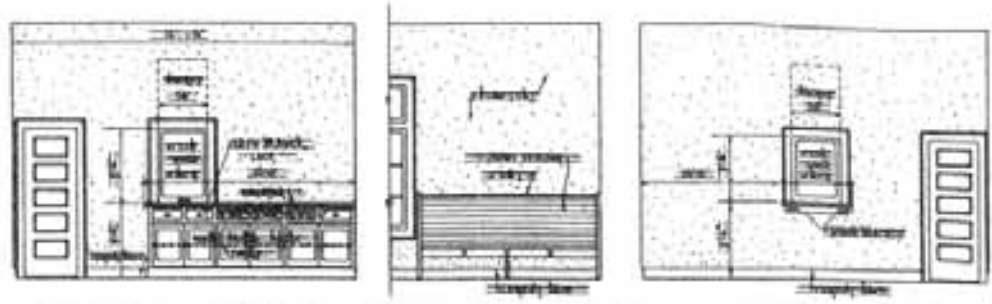
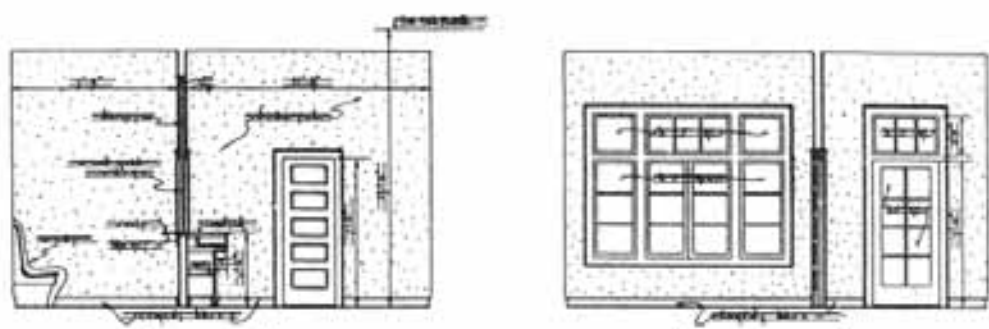


Figure 4 Drawing, Interior Elevations,
As Constructed, No. 170/25,900,
Sheet 6 of 14, December 12, 1924, Union Pacific System.



WEST SIDE ELEV. OF SEAT ELEV. CONDUCTOR'S BOOTH
 TICKET OFFICE CONDUCTOR'S ROOM LOOKING TOWARD
 TICKET OFFICE



NORTH SIDE TRACK SIDE
 ELEVATION OF CONDUCTOR'S ROOM & TICKET OFFICE

Figure 5 Kelso Depot, 1924,
Union Pacific Historical Collection,
image number 504595.



Figure 6 Kelso, Calif., Lunchroom remodeling blueprint, May 5, 1949,
Union Pacific Historical Collection.

Figure 7 Telegraph operator Robert McCoy in Kelso telegraph office, 1955.
Collection of Robert McCoy.



Figure 8 Union Pacific Railroad passes, Rev. Bert Youde, 1936-43.
Collection of Bert Youde, Jr.



Figure 9 Kelso lobby, June 1957.
Collection of Art Francis.



Figure 10 Casey Finnell, Section Foreman, on front arcade,
Kelso Depot, c. 1960–64.
Collection of Larry Finnell.



Figure 11 Kelso train bulletin board, c. 1970.
Collection of Art Francis.

TRAIN BULLETIN			
WESTBOUND			
NO	TRAIN	DUE	REMARKS
103	CITY OF ST. LOUIS	6 40 A.M.	
5	PASSENGER	9 50 P.M.	
EASTBOUND			
6	PASSENGER	4 20 A.M.	
104	CITY OF ST. LOUIS	6 58 P.M.	

Figure 12 Kelso lodging room with bed, 1991.
Photograph by John W. Snyder.

