

D-8

INTERPRETIVE PROSPECTUS

James A. Garfield National Historic Site

Ohio

1990



PLEASE RETURN TO:

TECHNICAL INFORMATION CENTER
DENVER SERVICE CENTER
NATIONAL PARK SERVICE

ON MICROFILM

A PLAN FOR
THE INTERPRETATION OF

**JAMES A. GARFIELD
NATIONAL HISTORIC SITE**

OHIO

prepared by the
Division of Interpretive Planning
Harpers Ferry Center
Harpers Ferry, West Virginia

Approved by
Regional Director Don H. Castleberry
November 6, 1990

"... Few men in our history have ever obtained the Presidency by planning to obtain it. In most cases it is got by the result, partly of accident, and partly of the popular sentiment seizing hold of a man who has not done much about it himself".

James A. Garfield,
Diary entry for March 16, 1875
[Commenting on James G.
Blaine's probabilities of
winning the 1876 Republican
Presidential nomination]

"Although it was considered unseemly for a presidential candidate to take the stump in his own behalf, Garfield was not silent. A man who had been speaking for so many years, he remarked, could not at that late date play dummy".

Margaret Leech and Harry J. Brown
The Garfield Orbit
Harper and Row, Publishers
1978

TABLE OF CONTENTS

INTRODUCTION	1
PLANNING CONSIDERATIONS	4
Site Significance	4
Management History and Park Establishment	5
The Visitor and Visitor Use	7
The Park Resources	9
Cooperation Between the NPS and Western Reserve Historical Society	10
Museum Collections	11
Cooperative Efforts with Other NPS Offices	13
Summary of Media Problems and Needs .	14
INTERPRETIVE GOALS AND THEMES	17
Interpretive Goals	17
Interpretive Themes	17
THE PLAN	20
Visitor Center	20
Lobby & Book/Gift Sales Area ...	21
Auditorium	22
Museum Exhibits	23
Orientation Panel	26
Main House	26
Historic Furnishings	26
Furnishings and Collections Care & Conservation	29
Conducted Tours/Tour Route	30
Campaign House	32
Historic Furnishings	32
Indoor "Wayside Exhibit"	32
Audio Station	33
Personal Services	33
Personnel Staffing Needed	34
The Historic Grounds	35
Walking Tour Route	35
Wayside Exhibits	36
Relocate Historic Signs, Markers and Flag Pole	37
Miscellaneous Grounds Development for Interp. ...	38
Publications	39
Unigrid Folder	39
Hearing Impaired Guide	39
Potential Sales Item	39
Physical Access for the Mobility Impaired	40

OUTLINE OF MEDIA AND COST ESTIMATES 41
BIBLIOGRAPHY & OTHER INFORMATION SOURCES . 44
THE TEAM 47
APPENDIX ++++
COOPERATIVE AGREEMENT, JAMES A.
GARFIELD NHS 49

LIST OF GRAPHICS

	<u>Following Page</u>
Existing Conditions, James A. Garfield National Historic Site	3
Conducted Tour Route, Lawnfield, First Floor	31
Conducted Tour Route, Lawnfield, Second Floor	31
Visitor Flow Pattern, James A. Garfield National Historic Site	35

INTRODUCTION

James A. Garfield National Historic Site, popularly known as "Lawnfield", was established a decade ago to commemorate and interpret the life and times of an extremely complex individual who by a twist of fate became the 20th President of the United States.

Garfield deserves to be well known for a variety of reasons; perhaps as one of our most intellectual presidents -- ranking with Woodrow Wilson and perhaps Thomas Jefferson, or as one of the most gifted orators who occupied the White House. Yet Garfield and several other late 19th Century U.S. presidents have nearly disappeared into oblivion and have been dubbed the "Presidents Anonymous" by Garfield's definitive biographer, Dr. Allan Peskin. As Peskin points out, "Yet today to most Americans, the name Garfield calls to mind not a president but a singularly repulsive comic strip cat." And unfortunately, if he is known by some, they only recall the fact that he was our second assassinated president or perhaps that he served the next to the shortest tenure of presidential office. Along with Thomas Jefferson, Garfield deserves to be held in high regard as a president who was also a **true Renaissance man.**

Dr. Peskin, in the closing chapter of his biography, Garfield, succinctly puts President Garfield's life and legacy in historical perspective, as follows:

Little wonder that Garfield would be remembered more for what he was than for what he did. His career seemed to embody the national ideal of the self-made man, rising from log cabin to White House in unbroken ascent, propelled to success by character, piety and ability -- a living exemplar of the blessings of adversity. Yet, far from being a simple, inspirational success story, Garfield's life was actually tangled in contradictions:

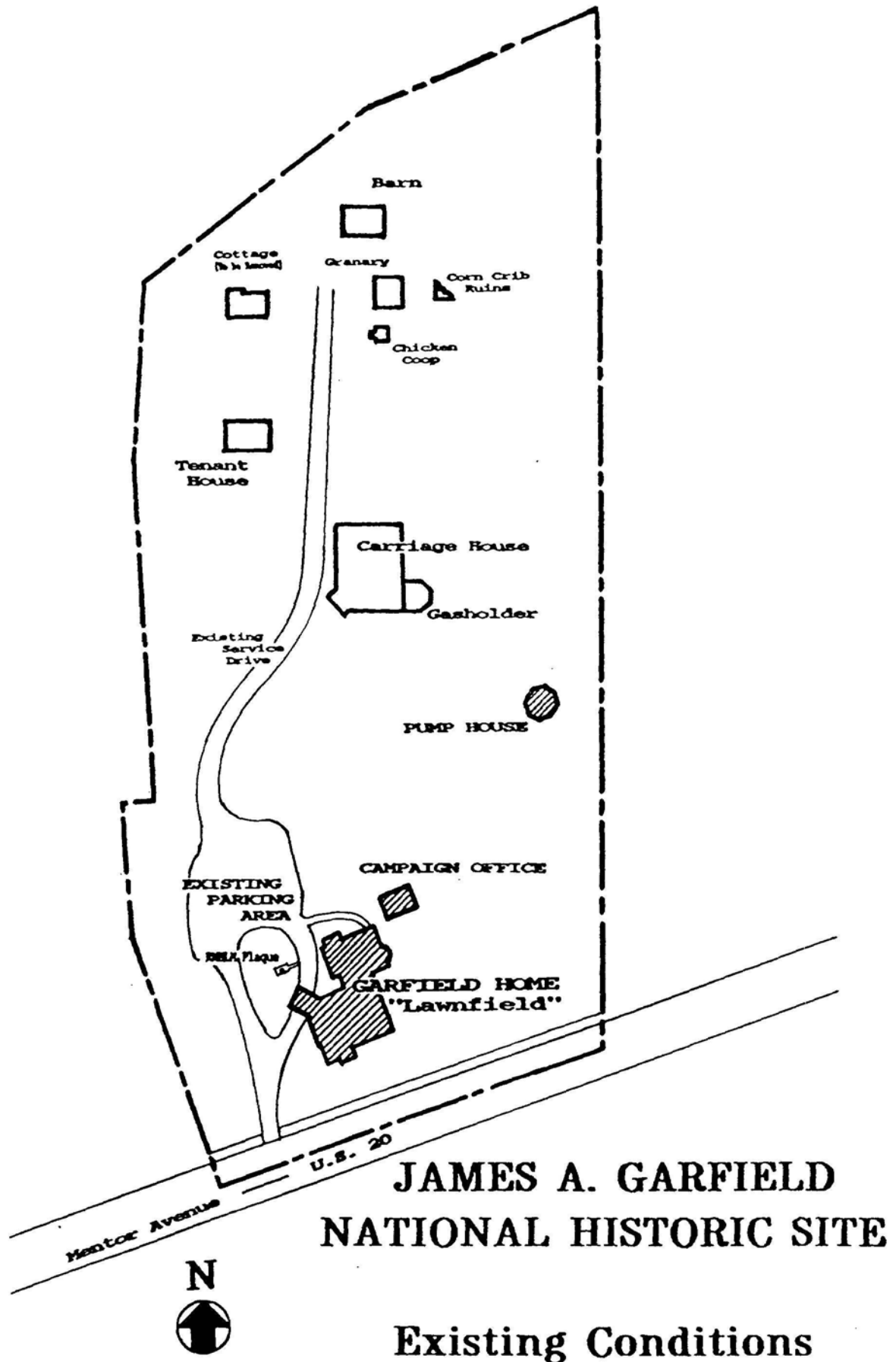
a pacifist turned soldier, an educator turned politician, a preacher turned economist, a man of essentially literary tastes cast in the role of party chieftain, a husband who, at length, fell in love with his wife, and a man racked by self-doubts who was, at the same time, convinced of his own high destiny. And, above all, the central contradiction of his career: here was a misplaced intellectual thrown onto the stage of public life, moving restlessly between the worlds of action and introspection, drawing strength from each but at home in neither.

Garfield often liked to cite a saying of George Canning's that struck him as peculiarly appropriate to his own circumstances: "My road must be through character to power." In his own career Garfield tried to live by that motto and in so doing demonstrated that not all that glittered in the Gilded Age was gilt.

The Congressional legislation authorizing James A. Garfield National Historic Site on December 28, 1980 [P.L.96-607] and the Cooperative Agreement of September 21, 1987 [see the Appendix for a copy of the complete agreement] based on that enabling legislation, establishes a special relationship between the Western Reserve Historical Society and the National Park Service concerning this site. The authorizing legislation and cooperative agreement mandate and specify joint responsibility for the management, operation and interpretation of this significant national historic site. The National Park Service, under certain restraints on methods of acquisition, has the responsibility of ownership and stewardship of the land and all Garfield-associated historic structures located thereon. The ownership and stewardship of the Garfield family furnishings and historic artifacts remained with the Western Reserve Historical Society. The Society also retained the responsibility and accountability for operation, maintenance, and

interpretation of the property as an historic site and museum.


This document has been prepared, through cooperation between the Western Reserve Historical Society and the National Park Service, to guide the joint efforts of the Society and the Service in developing interpretive media and programs to aid our visiting public. From them, we hope, visitors will better understand and perhaps appreciate the legacy of James Abram Garfield. He was a versatile person who incredibly squeezed so much into his life of less than five decades, including: a college professor; a linguist [wrote and spoke five languages]; a college president [Western Reserve Eclectic Institute]; an Ohio State Senator; an active pulpit preacher [Disciples of Christ]; a Civil War Major General; an accomplished orator; the Majority Leader in the United States House of Representatives; an insatiable reader [4 to 6 books weekly most of his life]; a practitioner of scientific agriculture [a gentleman farmer]; a practicing attorney, and the 20th President of the United States.



**JAMES A. GARFIELD
NATIONAL HISTORIC SITE**

Existing Conditions

KEY:

Historic Structures Now Open to the Public — 

ON MICROFILM

487/17,000
1 of 4

PLANNING CONSIDERATIONS

Site Significance

Based upon the 1971 National Park Service inventory of major buildings, sites, and memorials associated with the presidents of the United States, Lawnfield emerged as the best existing site associated with James Abram Garfield, the 20th President of the United States.

President Garfield purchased this 158-acre Mentor farm in 1876. This farm included a one and one-half story house, constructed in 1832. The house, yard, garden, orchards, barns, and other buildings occupied approximately twelve of the 158 acres.

In the summer of 1877, Garfield remodeled an adjacent 16 X 25-foot building to serve as an office, an auxiliary library, and a hideaway retreat. It was from this building, as well as from his study and the front porch of the main house, that Garfield conducted his successful campaign for the presidency in 1880. From this adjacent building, which became his visible campaign headquarters, all telegraph messages were sent and received.

During 1880, the Garfield's enlarged the Main House to two and one-half stories.

After the assassination of the President in 1881, Lucretia Garfield, the President's widow, significantly altered the home. In 1885, she commissioned the construction of a major wing to be added to the rear of the home --- primarily to house a memorial library dedicated to the late President. Other facilities later added to or relocated on the property included: the Gasholder [built ca. 1885]; the Windmill/Pump House [built ca. 1885]; a Tenant House [built ca. 1885]; the Carriage House [built 1893]; a Chicken Coop [date of construction unknown]; a Barn [probably built as part of the 1877-1878 barn complex and relocated]; and a Granary [built ca. 1893]. Even though these additions to

the Main House and grounds occurred after the death of President Garfield, the structures, furnishings, exhibits, and personal effects contained therein relate to and help interpret the life and memorialization of the assassinated President. Therefore, the overall evolution of the site from the period when the property was purchased in 1876 through the Main House enlargement in 1885 to the construction of the 1893 carriage house is deemed significant.

Management History and Park Establishment

In 1936, President Garfield's heirs deeded the Main House, the Campaign House and the grounds immediately surrounding them [approximately 0.8 acre] to the Western Reserve Historical Society, to be operated as a museum for future generations. In 1944, the family expanded the museum site by donating additional adjacent property [approximately 3.6 acres] to the Western Reserve Historical Society, including the Carriage House and the land upon which the current parking area is located. The remaining portion of the current National Historic Site [approximately 3.4 acres] was sold to Eleanor B. Garfield in 1952, then to the Lake County Historical Society in 1975. In 1984, the National Park Service purchased the parcel which included the Well House, Tenant House, Barn, Granary and Chicken House.

On January 29, 1969, the property was designated a Registered National Historical Landmark.

James A. Garfield National Historic Site was authorized as a unit of the National Park System by Act of Congress [Public Law 96-607] on December 28, 1980, to "preserve for the benefit, education, and inspiration of present and future generations certain historically significant properties associated with the life of James A. Garfield" -- 20th President of the United States. In the act, Congress specifically authorized the preservation of this 7.82 acre site President Garfield's home, known as Lawnfield, and the grounds. Together the home and these grounds constitute the only remaining portion of his original farm.

The act directed the Secretary of the Interior to administer the site. However, authorizing provisions have permitted the Secretary to enter into an agreement with the Western Reserve Historical Society to maintain and operate this historic property. It also specified that the Lawnfield portion of the site, owned by the Western Reserve Historical Society, may only be acquired by donation.

From 1956 to 1984, the entire property was operated and maintained by the Lake County Historical Society under a contract with the Western Reserve Historical Society. This county historical society used Lawnfield as its headquarters and general county museum, and the home was open to the general visiting public seven months a year. In 1984, the Western Reserve Historical Society resumed direct responsibility for management and operation of the historic site.

During this period, funds to operate and maintain Lawnfield came from admission fees, memberships, and donations. The Lake County Board of Commissioners contributed funds for Lawnfield operations until 1966. When this support was no longer possible, the county historical society turned to the Western Reserve Historical Society for financial assistance. Between 1967 and the late 1980's approximately \$95,000 of capital improvements were made to the property. Most of the funds were provided by the Western Reserve Historical Society, with some money coming from the federal government in the form of matching historic preservation grants. However, this funding has been insufficient to meet ongoing maintenance requirements for the buildings, the collections, and the site, as well as development opportunities.

As provided by the authorizing legislation, the Western Reserve Historical Society donated their portion of the site [which included the Main House, Campaign House, and Carriage House] to the National Park Service in 1988. Also, as provided in the authorizing legislation, the Service has entered into an agreement with Western Reserve to provide day-

to-day operations, interpretation, and maintenance for the site.

The Visitor and Visitor Use

The park is open to the public year-around. It is a compact cultural area surrounded by residential areas, located in one of Cleveland's northeast suburbs. Since the site has no overnight accommodations, the park is a day use area only. The park is open daily except Mondays; 10 a.m. to 5 p.m. Tuesday through Saturday, and noon to 5 p.m. on Sunday.

Visitor activities consist of: receiving orientation services; conducted and self-guiding tours of the furnished Main House; viewing the third floor museum exhibits in the Main House; visiting the gift/book sales shop; visiting the refurnished Campaign House; and self-guiding tours of the grounds. The staff provides conducted tours for those arriving at the site as part of organized bus tours, with school groups, and on a staff available basis for general family and random group visitation. Most random group visitors see the furnished Main House using a self-guiding tour leaflet. All visitors see the grounds on a self-guiding basis. The grounds are closed when the Main House closes.

Visitor use record keeping at Garfield NHS has been somewhat limited. However, analysis of existing data and general observation of visitor behavior suggests a few basic visitor use patterns and trends.

Because visitation is largely local and regional, Lawnfield experiences its heaviest visitor use on Sundays [when it is open only half days]. From Tuesday through Saturday, peak visitation hours for general visitors are during the lunch hour and from 2:30 p.m. to 5:00 p.m. The site has a small number of national and international visitors. Minority visitors are few. Handicapped visitation is negligible because of lack of accommodating facilities.

During its tenure of operation of Lawnfield, Lake County Historical Society kept the site closed from November through April, and were often inconsistent in their daily hours of operation. The annual visitation in 1984, the last year of their operation, was 11,500. Annual visitation to the site has increased steadily each year over the past six years, since the Western Reserve Historical Society resumed direct operation from the Lake County Historical Society. During that period, annual visitation has increased by nearly 77%, from 11,500 to 20,348.

During the past five years, total number of visitors in organized groups has also increased by almost 110%; from 2,848 in 1985 to 5,958 in 1989. During 1989, nearly 30% of all park visitors came to the park as part of organized groups. This steady, rather dramatic increase in organized group visitation is essentially an increase in school group visitation. Operation of the site throughout the school year, better publicity, and the designation of an on-site visit to Lawnfield as part of the Third Grade Social Studies curriculum have all contributed to this dramatic increase in school group visitation.

In spite of these dramatic increases, actual visitation increases have fallen far short of the annual visitation of 36,000 projected for 1990 in the 1986 General Management Plan.

The actual carrying capacity of the Main House, which is the prime resource, would be considered its visitation limiting factor. Although future hours and days of operation may change, the following calculations are based on current hours of operation. That carrying capacity has been estimated at 25 persons per floor per hour, or 350 persons per day, except Sundays [when hours of operation are shorter]. Current visitation averages only 65 visitors per day. However, it would be appropriate to note that the actual calculated carrying capacity of Lawnfield, based on structural integrity, will be determined in the forthcoming final historic structure report.

The Park Resources

This national historic site is a 7.82 acre park located in a residential section of Mentor, Lake County, Ohio, a suburban city located in the eastern portion of the Cleveland metropolitan area. The site includes "Lawnfield", the residence of James A. Garfield (1876-1881), and the only remaining portion of his 158.46 acre farm. It includes various outbuildings and numerous artifacts that were associated with this man and his family. The structures, artifacts and grounds capture and help communicate the rich spirit and strong character of President Garfield and his era.

The historic property, located at 8095 Mentor Avenue [also designated as U.S. Highway 20], is bordered by Hollycroft residential area on the west and north, a Lutheran Church on the east, and Mentor Avenue (U.S. 20] on the south. The 7.82 acre park contains: the Main House, the 1880 Campaign House, a Well House, the Carriage House/Gasholder, a Tenant House, a Chicken Coop, a Granary, a Barn, and a partly collapsed Corn Crib.

The original house, referred to as the Dickey house for an earlier owner, is partially enclosed within the present Main House. The Dickey house was built about 1832 and was purchased by James A. Garfield in 1876. Mr. Garfield modified and enlarged the original house during the year 1880, including his addition of the famous "campaign porch" on the front of the residence. The Garfield family modified the house twice after the President's untimely death in 1881 -- a major remodeling and enlargement in 1885 which included the memorial library, and a 1904 alteration.

In addition to the structures, the cultural landscape of the grounds at Lawnfield contains other significant resources. Remains of an historic farm road trace are quite evident through the center of the grounds. This historic road connected the Main House with a special stop on the Lakeshore & Michigan

Southern Railroad, which bisected Garfield's Mentor farm. Political campaign pilgrims rode or walked this trace to hear Garfield extemporaneously speak from the "campaign porch" of his Mentor home --- to which reporters covering the campaign gave the more dignified name "Lawnfield". It is also quite likely that significant archeological remains of important farm buildings exist on site. Perhaps the archeological excavation team working on site during the summer of 1990 will uncover the remains of James A. Garfield's U-shaped 1880 Barn/Stable complex, in the general vicinity of the existing public parking lot.

The historic grounds also contain a myriad of mature trees, many of which were planted by Garfield and his family. A great number of these individual trees are in critical need of pruning, cavity work and cabling.

The Mentor property remained in Garfield family control from 1876 until 1936, which greatly enhanced the preservation of the core farm and its buildings. The Garfield children should be credited with preserving this important historic site as a memorial to their parents.

Please refer to the "Management History and Park Establishment" section for details about the more recent history of the park's cultural resources.

The entire historic site is listed in the National Register of Historic Places. Current management actions emphasize preservation, protection and interpretation of cultural resources and their settings.

Cooperation Between the National Park Service and the Western Reserve Historical Society

As previously stated in the Introduction of this document, the Western Reserve Historical Society and the National Park Service own, manage, and operate this site under a very special relationship, mandated by the December, 1980 Congressional enabling act and

delineated by the September, 1987 Cooperative Agreement.

Since its 1980 authorization, the 7.82-acre historic site with all Garfield-associated structures located thereon have entered into federal ownership through purchase and donation. However, the Garfield family furnishings and historic artifacts remain the property of the Western Reserve Historical Society.

Under the terms of the cooperative agreement between the Service and the Society, the Society has the responsibility for the stewardship and operation of the property as an historic site and museum, as well as to provide interpretation and visitor services for the public visiting this historic site.

Museum Collections

The site possesses substantial collections of historic Garfield family furnishings and artifacts, which [as previously noted] are owned by the Western Reserve Historical Society. These historic objects, including numerous items with direct provenience to President James A. Garfield, are located on-site in the Main House, the Campaign House, and the Carriage House.

General estimations of the quantity of available objects for visitor center exhibits interpreting the lives of President Garfield and his family are as follows:

- . for "Garfield, the U.S. Congressman" and "Garfield and Technology" -- Small amount, but potential for medium amount;
- . for the "Diversity and Education of James A. Garfield" and "General Garfield and the Civil War" -- Medium amount;
- . for the "Nomination, Election and the Presidency of James A. Garfield" -- Large amount;
- . for the "Death and Memorialization of President Garfield" and "The Garfield Family and Life in the Garfield Home" -- Very large amount.

Clothes in the closets and drawers of Garfield's Lawnfield residence, the general collections of the Western Reserve Historical Society in downtown Cleveland, and the Armed Forces Medical Museum at Walter Reed Army Medical Center in Washington, D.C. have been identified as possible additional sources of Garfield artifacts and historic graphics for interpretive media developments. Garfield family descendants need to be contacted for possible relevant artifacts which they might be willing to donate.

The Western Reserve collections contain both Garfield artifacts and Garfield related graphic materials for enhanced historic furnishings, visitor center exhibits, audio-visual programs, and perhaps wayside exhibits. The Armed Forces Medical Museum owns and exhibits the small ivory-handled .44 caliber British Bulldog revolver with which Charles J. Guiteau, an unhinged religious fanatic, used to assassinate President Garfield.

Although a skeleton inventory of the historic furnishings has been made in the past, only a few of these artifacts have been catalogued. Those which have are supplemental furnishing pieces from the main Western Reserve Historical Society collections in Cleveland. Responsible collections care and management would mandate a systematic accessioning and cataloging of all objects in this collection. The cooperative agreement between the Service and the Society delineates that the "museum collection will be protected from controllable harmful environmental conditions, accidental damage, vandalism, and theft" and that the collection "will be preserved, conserved, and maintained according to the curatorial policies and standards prescribed by the Service". However, the agreement offers the option that "other professional curatorial standards and practices may be acceptable and may be approved by the Service". This work must be done prior to their inclusion in new visitor center exhibits or return to the furnished Main House and Campaign House after final restoration of the buildings. However, we would **strongly urge the completion of the cataloging before media planning and design begins.** If cataloging is not completed first,

the media planning and design efforts will be much more costly and time consuming.

The size and variety of the park's artifact collection, plus the poorly controlled environmental conditions in which it is located offer a sizeable challenge to responsible cultural resources management. The collection has suffered damage from adverse environmental conditions such as insect damage, light, and high relative humidity. Objects on the first floor exhibit considerable deterioration from uncontrolled relative humidity. Many objects on the second and third floors have been damaged by very high light levels. Some furniture placed in the vicinity of forced air heat registers have failed glue joints. Textiles have deteriorated more than other types of objects in the collection, particularly suffering from light damage and insect attack.

Little or no systematic monitoring of the interior environment of the Main House and the Campaign House has been done. Monitoring of relative humidity, temperature, light, and insect activity for at least one year will be needed immediately to assist object conservators, architectural engineers, and historical architects. Such data will help conservators plan and carry out object treatment strategies prior to returning them for exhibit, and help engineers and architects design environmental controls for both the Main House and the Campaign House.

Cooperative Efforts with Other National Park Service Offices

This Interpretive Prospectus will be prepared in conjunction with other Denver Service Center and Midwest Regional Office planning projects and studies preparatory to structural stabilization and restoration of the Main House and preparation of the historic Carriage House for adaptive use as a visitor center. This prospectus will provide guidance to Denver Service Center, Midwest Regional Office, and architectural/engineering contractor personnel planning the:

- . structural stabilization and restoration of the Main House;

- . environmental controls for the Main House and Campaign House;
- . preparation of the historic Carriage House for adaptive use as a visitor center;
- . any site development and/or landscaping which will help establish visitor flow patterns on the grounds, especially among those historic structures open to the public [the Main House, the Campaign House, the Pump House, and the Carriage House].

This prospectus will also be prepared in close cooperation with the Superintendent of Cuyahoga Valley National Recreation Area and his staff, who provide direct National Park Service oversight for James A. Garfield National Historic Site.

Summary of Media Problems and Needs

Although this historic property has been open to the public for well over 50 years, the interpretive experience for visitors has been relatively limited. It has consisted of conducted and self-guiding tours of the campaign house and key furnished sections of the Main House, and a small to medium sized museum of Garfield memorabilia on the third floor of the Main House. All of these visitor services were developed and provided without benefit of some type of a master interpretive plan.

This historic site then is a new area, authorized on December 28, 1980, for which no interpretive prospectus previously has been prepared.

The General Management Plan/Environmental Assessment [GMP/EA], which was completed and approved in July 1986 directs that an interpretive prospectus be prepared to:

- . develop interpretive themes designated in the GMP, which are to primarily focus on the campaign, presidency and commemoration of James A. Garfield;
- . identify how and with what media these themes will be presented.

The General Management Plan as well as on-site observations by the Interpretive Prospectus Planning Team noted numerous needs and deficiencies. This document will designate interpretive as well as associated solutions for these problems and will provide direction and focus to the visitor experience at Lawnfield.

At present, all visitor use function and facilities are located within the Main House, with the exception of casual, self-guiding visits to the interiors of the Campaign House, the Well or Pump House, and part of the Carriage House. Yet the two of these historic structures with refurnished interiors [the Main House and the Campaign House] remain inaccessible to mobility impaired visitors.

The functional use of the Main House, "Lawnfield", for orientation, fee collection, rest rooms, conducted tours, museum exhibits, and gift shop result in considerable wear and tear on the historic fabric of the house and some furnishings, such as carpeting. Of all these functions, only the conducted tours of President Garfield's home need to occur in the house.

To provide adequately for these remaining functions without adversely impacting the historic scene, the general management plan specifies the adaptive use of the historic 1893 Carriage House as the site's visitor center.

The space and facilities available in the house are seriously inadequate for at least three of these visitor use functions. Each of the two rest rooms available in the Main House only accommodates one person. Currently, the third floor is used for museum exhibits, and as such does not function well. First, it makes little sense to interpret the park story to visitors only after they have already experienced the prime resource of the park. Second, this third floor location is potentially hazardous to both the artifacts and the visitors. The intensity of much direct sunlight from numerous dormer windows coupled with the lack of temperature and relative humidity controls puts unacceptable

stresses on these artifacts. Not only is this floor inaccessible to mobility impaired visitors, it has only one exit, which makes it potentially hazardous to all visitors in the event of a fire. Additionally, there are initial indicators from structural analyses now in progress, as a portion of the Historic Structures report, that the third floor may not be structurally sound.

Also, unfortunately these existing third floor exhibits have very little interpretive text and almost no identifying label copy for objects and graphics.

The famous 1880 Campaign Porch, a major historic structural feature of the house, was removed during the 1904 renovation of the Main House. Reconstruction of that front porch will greatly benefit and enhance the interpretation of Garfield's 1880 presidential campaign.

President Garfield's life during the years 1876 to 1880, and his legacy to the American people can be interpreted well through the historic resources of the park. However, some other form of interpretive media is needed to interpret the remaining periods of Garfield's busy life.

The only interpretation of the historic grounds and the historic outbuildings provided now is that which is randomly and casually given as part of the conducted tours or information desk visitor services. Further, the site of President Garfield's U-shaped barn complex is not now interpreted, but should be. Such interpretation will help visitors realize that historically this was a working farm, not just a country home. However, the existing parking lot most likely rests on top of and physically and visually impacts on the site.

INTERPRETIVE GOALS AND THEMES

Interpretive Goals

The interpretive goals listed here, are derived from the park's 1984 **Statement for Management**, are based on this national historic site's 1980 enabling legislation [P.L. 96-607, Title XII]:

- . To interpret the life and times of James A. Garfield, particularly his presidency and contributions to American history, as his entire life was typical and representative of the 19th century Mid-Western experience;
- . To preserve for the benefit, education and inspiration of present and future generations, the James A. Garfield Home and associated property known as Lawnfield in accordance with rules and regulations of the Secretary and statutes applicable to the National Park Service areas.

Interpretive Themes

Four themes are based on and derived from "subjects" which were presented as themes and sub-themes in the approved 1986 James A. Garfield National Historic General Management Plan.

Themes:

Subjects From the GMP Which Will Communi- cate These Themes:

- | | |
|--|--|
| 1. Garfield's thirst for knowledge and skills in numerous diverse fields [education - both teaching & administration, an active pulpit ministry, agriculture, science, and political leadership] greatly exemplified the American success story of the 19th Century, and did | Life and Career of James A. Garfield

Sub-subjects:
Early Life,
Political &
Military
Careers,
and
Presidency |
|--|--|

Themes:

**Subjects From the GMP
Which Will Communi-
cate These Themes:**

so during a remarkably compressed period of time [He was only 49 years old when assassinated].

2. Garfield began changes in the style of presidential campaigning; his "front porch" campaign began the evolution of modern day presidential campaigns [i.e., a style which actively involves the presidential candidate].

**Life and Career of
James A. Garfield**

Sub-subject:
Presidency

3. Considering the political, moral and persuasive characteristics which James A. Garfield brought to his brief presidency, how might the Garfield legacy have been expanded ... how might American history have changed, if not for his untimely death.

**Life and Career of
James A. Garfield**

Sub-subject:
Presidency,
and
Commemoration

4. President Garfield was (1) a leader with a following and his strongest following was his family, and (2) man of numerous talents and skills, who so intertwined that leadership, talent and skill with a fiber of religious and daily living principles in such a way that he felt **compelled** to actively share with his family and his public;

**Life and Career of
James A. Garfield**

Sub-subject:
Commemoration

Themes:

further, Garfield's influence continued after his death, as is reflected in the renovations and memorializations at the Garfield residence by Lucretia Garfield and the Garfield family.

Subjects From the GMP
Which Will Communi-
cate These Themes:

THE PLAN

Interpretive media proposals will be made for the following areas of James A. Garfield National Historic Site, also known as "Lawnfield": 1) Visitor Center [adaptive use of the 1893 Carriage House] 2) Main House [Garfield family residence]; 3) Campaign House; 4) the remaining historic grounds. The interface between needed interpretive personal services and interpretive media will be noted whenever and wherever pertinent and appropriate.

Visitor Center [Adaptive Use of 1893 Carriage House]

As specified in the 1986 General Management Plan, the interior of the 1893 Carriage House will be adaptively converted into a visitor center.

We strongly urge that this visitor center with all its visitor facilities and interpretive media be designed, produced and opened to the public prior to the temporary closure of the Garfield residence for its major restoration and stabilization. Such phasing of this Garfield National Historic Site development project would still give park visitors an alternative quality experience at Garfield during the extended period of temporary closure of the home.

As soon as is possible, Harpers Ferry Center media planners and designers need to begin working closely with Denver Service Center architects designing the adaptive use of the Carriage House for Visitor Center purposes to assure that exhibit and other media design considerations are accommodated in a timely manner.

Approximately 3775 square feet would be available for public use space, plus some mechanical and circulation space, on the first floor of the historic Carriage House. This adaptive use of the building would also house space for the following functions on the

second floor: offices, storage/work room, library, mechanical and circulation. All assignment of space, and especially for the different types of interpretive media and other public use space, will need to be flexibly considered to balance interpretive and visitor use needs with responsible cultural resource stewardship.

We assume that about 400 square feet would be needed for public rest rooms, leaving 3375 square feet on the first floor for media and related uses. It would seem that it would also be desirable to leave the three 10' X 10' stalls intact, if at all possible. The 3375 square foot space for interpretive media will be generally divided into three spaces: the lobby & book/gift shop sales area; an auditorium; and an exhibit area. It also seems appropriate to note that these rest room facilities would be inadequate to the large crowds attending special events held on the grounds a few times each year. To accommodate these visitors, another rest room building or portable rest rooms will be needed.

Since the visitor parking lot will be located behind the Carriage House, it is important that the initial visitor access to the visitor center be through an existing opening on the north or east side of the structure. This would not only give visitors obvious and immediate access to the visitor center, but would assure the channeling of visitors through the visitor center first.

After experiencing the interpretive media in the visitor center, visitors would exit through the front of the building using the large double doorway at the southwest corner of the Carriage House. Most visitors would then proceed directly to the Main House, and around its west side to its front [or south] porch for their conducted tour. Mobility impaired visitors would access the front porch via a ramp on the east porch, and then around on the front porch to the front door.

Lobby and Book/Gift Sales Area. The lobby with its information desk and fee collection station should be located immediately adjacent to the visitor entrance to the center.

The book/gift sales area should be located adjacent to the information desk, to allow the same person to operate both the information desk/fee collection operation and the book/gift sales. Based on the size of the existing lobby/gift shop space and Western Reserve's estimated need, about 450 square feet of space will be needed for this combination lobby/sales function. We have specified a combination gift shop and interpretive publications sales area to accommodate the Western Reserves operational needs.

Auditorium. This auditorium should be designed to seat 65 people, accommodating a school bus load (maximum of 54 students) plus two or three family groups. If possible, it should be designed with a flexible seating arrangement to allow for the multipurpose use of this room, for such things as special and seasonal events. Based on specifications provided by the Harpers Ferry Center's Audiovisual Equipment Branch, an ideal size and configuration for this auditorium would be 27' wide by 36' long with an additional 10' deep by 14' wide projection room, aligned on center with the center of the projection screen. Such a configuration would require 975 sq.ft. for the auditorium and 140 sq.ft. for the projection room; however, competition for space in this adaptive use building may dictate some space use adjustments..

The primary use for this auditorium will be the showing of a 10-12 minute motion picture. However the auditorium should have the flexibility to be used for such things as special programs, meetings, and seminars, This movie will function as a "scene-setter", or a "stage-setter" interpretive piece emphasizing James A. Garfield's life before moving to this Mentor farm [including his advocacy for the freedom and dignity of Blacks], plus his Presidency and his death. As much as possible it would photographically present other sites associated with Garfield which still exist today, such as: churches; Hiram College (then Western Reserve Eclectic Institute); Williams College; the Ohio & Erie Canal; Chickamauga battlefield; his Tomb; perhaps the Ohio Senate Chambers; etc.

The film would be "front-throw" projection from a film tree, with remote start capabilities from both the information desk and the front of the auditorium. It also would be closed captioned for the hearing impaired.

A 12 to 15 minute slide/sound program would be developed for use during the time when the main house is closed for restoration. It should provide an alternate interpretive experience for visitors, primarily giving them a glimpse of the furnished house interior at Lawnfield. Secondly, it might show and interpret the pressing need for this restoration work and the inconvenience of the house closure. To keep the visitors' attention focused on Garfield the man, rather than household furnishings in general, this program should feature furnishings especially associated with President Garfield and his family. Since this is a second program, these slides will need to be captioned on the slides for the hearing impaired.

Museum Exhibits. The museum exhibit area, would be divided into seven major subject or exhibit areas. Approximately 1800 square feet would be needed for this major exhibit area. Primary themes to be interpreted in these exhibits would be:

- . the diversity of James A. Garfield's interests and activities;
- . the incredible energy of Garfield;
- . the plethora of Garfield's accomplishments.

Secondary themes treated in these exhibits would include:

- . what he meant to the country in his day;
- . his continuing interest in and concern for both the liberation of the Black race and the enfranchisement of the Black man;
- . how his life and accomplishments can inspire American's today.

The seven subjects of these exhibit areas would be:

- . Diversity and Education:
 - . interpreting Garfield's dramatic rise from poverty to significant achievements in such diverse fields as an

active pulpit ministry and the academic world, as well as his love of books, his passion for studying a wide variety of subjects, and his active advocacy for the freedom of Blacks, insuring their enfranchisement, and promoting their dignity, such as his active participation on the Board of Trustees for Hampton Institute [note: the treatment of this topic might well help provide new inducement for greater minority visitation to this historic site];

. Civil War:

. interpreting Garfield's short, but impressive military career and his heroic acts; placed in the proper context of his zeal for freeing those of the Black race still in bondage;

. Congressman:

. documenting and interpreting Garfield's many years of public service as both an Ohio State Senator and a U.S. Congressman prior to his inauguration as President of the United States; here, too, is opportunity to treat his support for Blacks in the context of his major sponsorship of the 15th amendment to the U.S. Constitution, which gave Blacks the right to vote;

. Nomination, Election and the Presidency:

. interpreting Garfield's dramatic last minute, "dark horse" nomination, his innovative "front porch" campaign, and the accomplishments of his brief presidency;

. Death and Memorialization:

. interpreting the country's shock and grief, and the tremendous outpouring of sympathy for Garfield's widow and family; it will also present an opportunity to pose the question of what his Presidency might have accomplished had he not been assassinated;

. Life in the Garfield Home:

. providing visitors with a sense of what it was like to live in the Garfield home during his public career --

Congressional and the Presidency, and in the period immediately after his assassination; it is most likely that a major segment of this exhibit pod will be devoted to Garfield's wife, Lucretia;

. Garfield and Technology:

. interpreting Garfield's interest in the latest technology of the day, which led him to read about and actively experiment with a wide variety of scientific and agricultural technologies; although many technological experiments and applications still in evidence in the house and on the grounds today were the work of Garfield associates and successors, they are legacies of Mr. Garfield's intense scientific interest.

Please see the "Museum Collections" section of "Planning Considerations" [see pg. 11] for general estimates of artifacts available for each of these seven exhibit areas

It should be noted that an effort will be needed to locate objects to supplement existing exhibit materials. If and when these exhibit artifacts are located and acquired, their ownership -- either National Park Service or Western Reserve Historical Society -- needs to be equitably resolved in some type of general management or cultural resource management document or action [it is not appropriate to do so in this prospectus]. It also should be noted that a considerable amount of graphic materials exist for most of these subjects, although effort also should be made to locate additional graphics -- especially for his congressional career, for Life in the Garfield Home, and for Garfield and Technology. A significant amount of research will be needed to enrich, identify, and interpret graphics materials for these new exhibits.

The actual exhibit design may leave numerous display artifacts in locations not visible by personnel staffing the lobby information desk. Therefore, adequate security for all exhibited objects must be considered during exhibit planning and design.

Since James A. Garfield kept detailed diaries from his teen years to his death, wrote numerous letters, and delivered many speeches or orations, voluminous documentary materials exist from which to extract pertinent quotes. Therefore, his writings and quotes should be used whenever and wherever possible.

The "Diversity and Education" and "Congressman" exhibit areas lend themselves well to audio programs integrated into the exhibits, using **brief** samplings from Garfield's spoken words -- sermons, speeches, debates, passages from academic writings, etc. These programs, no more than 3 to 5 minutes long, should use **only** his words, and be dramatically delivered or read by an actor or a dramatic professional narrator. These two exhibit areas should be situated in such a manner as will minimize sound overlap between them. To provide programmatic access for the hearing impaired, the texts of the spoken words included in these audio programs should be incorporated somewhere within the exhibit label copy.

Orientation Panel. This exhibit will be located inside the Carriage House, immediately adjacent to the exit door leading to the historic Main House. Its purpose would be to:

- . orient visitors to the historic grounds;
- . direct them along the historic farm road to the furnished Garfield Residence for their conducted tour;
- . suggest a circulation route around the grounds to help them visit all the important features at Lawnfield, including a statement to specifically direct visitors to Wayside Exhibit #2 which is not on the direct circulation pattern.

Main House

Historic Furnishings. Based on recommendations of the Draft Lawnfield Historic Structure Report, the Main House will be architecturally stabilized and restored to the period of 1885-1904. It would be impossible to restore the home to the time of Garfield's death without removing major parts of the existing house, including the elegant library which Lucretia

Garfield added to the house in memory of President Garfield. The 1885-1904 period has been selected because it is the only time in which two key elements of the house, the Campaign Porch and the Memorial Library historically coexisted.

Designations of historic periods to which rooms are refurnished need to be balanced between maximizing opportunities to interpret Mr. Garfield's life and presidential campaign and maintaining the historical integrity of the furnishings with the proper period architecturally. Therefore, a few select rooms [the Front Hall, Garfield's Bedroom, and Garfield's Study] located in the oldest portion of the house will be refurnished to the 1880 Presidential Campaign period. The remainder will be refurnished to the 1885 period, just after the completion of the Memorial Library addition and associated renovations.

The Front Hall and President Garfield's Bedroom, both on the first floor, and President Garfield's Study/Office, on the second floor, will be the only rooms furnished to the presidential election year of 1880.

The remainder of the refurnished rooms, located on the first and second floors, will be refurnished to the 1885 post-Memorial Library addition period. These rooms specifically include:

- . the Front Parlor, the Reception Hall, Eliza Garfield's (the President's Mother) bedroom and Sitting Room, and Dining Room, all located on the first floor;
- . the Main Staircase, leading from the first floor Reception Hall to the second floor hallway;
- . Molly's bedroom, Lucretia Garfield's bedroom, the Boys' bedroom, Zeb Rudolph's bedroom, the second floor hallways, and the Memorial Library and Vault, all located on the second floor.

Based on the professional judgment of the team's Historic Furnishings Staff Curator the team determined that any rooms not mentioned specifically in the above two paragraphs will not be refurnished; leaving the following

portions of the Main House which will not be refurnished:

- . the first floor rooms now being used as the visitor reception/information desk/gift shop area [historic storage], the curator or site managers office [historic butler's pantry], the historic laundry room, and first floor part of servant's quarters;
- . the servants quarters and the bathroom between the Boys' Bedroom and Zeb's Bedroom on second floor;
- . all of third floor.

Although the Garfield family furnishings have remained with the house, an Historic Furnishings Report will be needed to assure that Garfield Family pieces are in their correct rooms and locations within rooms for the designated period of furnishing. It will also assure that each of these furnished rooms are complete, including carpeting, curtains, drapes, and if necessary, wallpaper.

Furnishings production will be based on the Historic Furnishings Report. Because of significant deterioration of furnishings due to both historic use and adverse environmental conditions, many of these furnishings will need conservation care and treatment before the furnishings production can be completed.

The Historic Furnishings Report should also give consideration to a plan which would specifically allow small groups of visitors the experience of entering as many of the furnished rooms as possible. This could be accomplished by locating historic furnishings to allow tours to either walk through rooms or at least actually enter rooms. Aesthetic, attractive barriers inside rooms would be needed to allow the later.

In preparing the report, the Furnishings Curator would need to consider artifact security as well as the levels of possible impact or damage on the historic furnishings. The report must also consider whether or not the plan for any given room would require so many relocations or deletions of furnishing items that it would leave a false image of the room's historic appearance. Selected rooms

which should be considered for "walk-through" visitation would be the Front Parlor and Eliza Garfield's Bedroom and Sitting Room on the first floor and Lucretia Garfield's bedroom on the second floor. Those rooms which should be considered for at least "step-in" entry would be: James Garfield's bedroom, Mollie's bedroom, Zeb's bedroom, and the Boys' bedroom, as well as Lucretia's bedroom, Eliza's bedroom, and the Front Parlor if "walk-through" proves unfeasible.

Some artifacts now displayed in historic furnished rooms are not really furnishings. These include items such as: President Garfield's fitted wicker picnic case; numerous items of clothing on beds, hangers and mannequins; and perhaps the Garfield family cradle. In addition to being out of place in furnished rooms, most of these artifacts need further environmental controls and they can best communicate interpretive messages if placed in exhibits. Therefore, we believe that it would be best to exhibit them in the Carriage House Visitor Center.

Furnishings and Collections Care and Conservation. The cooperative agreement between the Service and the Society specifies that "the contents of Lawnfield, including the furnishings, fine art, decorative art and other artifacts, papers and miscellaneous objects, are the property of the Society". It also states that the Society will catalog and maintain the collection and maintain "standard registrarial records" for the collection in accordance with prescribed curatorial standards and policies of the Service. To maintain the thematic integrity of this historic property and the "presentation of the Site for educational and public visiting purposes", uses of the collections will need to be undertaken through mutual agreement between the Society and the Service.

All interior furnishings and exhibitry, whether modern or historic, will have to be removed to permit the major restoration and rehabilitation of the Main House. Before these furnishings are removed for cataloging and storage, several actions need to occur to adequately address collections care needs.

The first step should be a program to monitor the interior environment of the Main House, and the Campaign House as well. Lighting levels, relative humidity, temperature, and insect activity should be monitored for a year, if possible. Light meters and computerized data logging units, coupled with training for Lawnfield staff in the use of these instruments conducted by professional conservators, will be needed.

Also, before these furnishings are removed and sent to temporary working storage, they should be inventoried, assigned catalog numbers with general description, and their exact locations within rooms documented, perhaps using a grid system.

While these artifacts are in temporary but working storage, it would be an ideal time to catalog all furnishings and perhaps begin the conservation treatment of these artifacts.

Consideration should also be given to designing and installing some type of an artifact theft-prevention system.

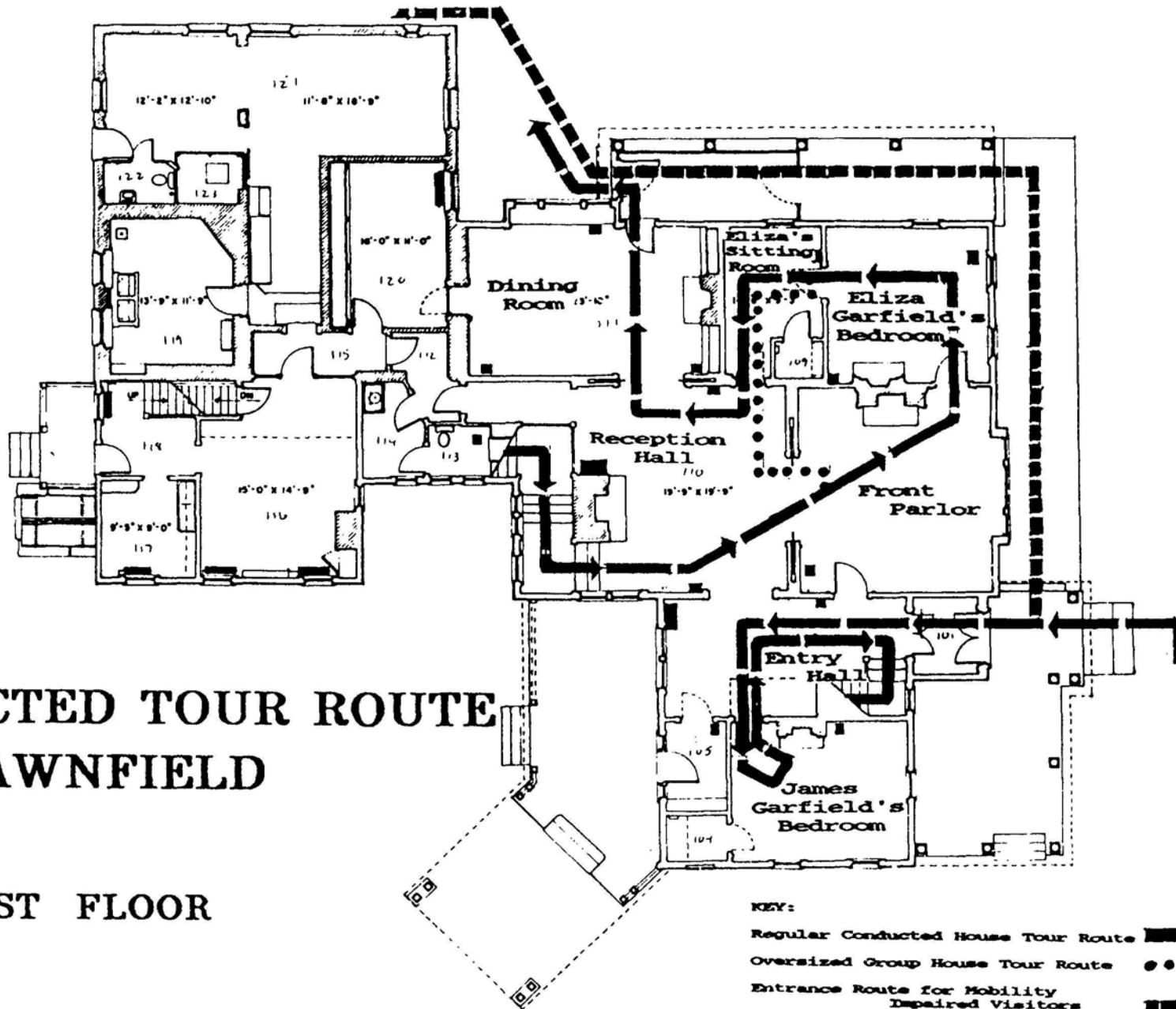
Conducted Tours and Tour Route. When the restoration of the Main House as well as the furnishings production is complete, visitation to the house will resume. From that time forward, visitors will enter the Garfield home **on conducted tours only** [please see pp. 21, and 40, for discussion of accessibility provisions for physically impaired visitors]. The interpretive staff of the Western Reserve Historical Society at Lawnfield should continue to develop, refine and present their conducted tours. The theme and emphasis of the tour should continue to be focused on President Garfield, his life and times. It should aggressively avoid the "house tour" or "antiques tour" approach.

The length of a typical tour should probably remain about 45 to 50 minutes in duration, which would lend itself quite well to scheduling "on the hour" tours. However, the tour length could and should be modified to meet special needs, such as: particularly light visitation days; particularly heavy days

of visitation; and special interest persons or groups.

The revised tour route would be as follows [please see the next two pages for floor plans of the house showing the tour route]:

- . after walking from the visitor center along the historic farm road trace, visitors will gather on the front [or south] porch of the Main House [the reconstructed 1880 Campaign Porch] to await the start of the next conducted tour;
- . mobility impaired visitors will access the front porch and front door via a ramp to the south side porch of the house;
- . enter through the front door, into the front hallway [note: reinstallation of a portiere in the archway leading to the Reception Hall will help block the distraction of a view into the remainder of the first floor rooms]
- . continue to President Garfield's bedroom on the first floor;
- . then proceed upstairs using the front staircase to President Garfield's study/office;
- . on the second floor, the tour moves across the hall to Molly Garfield's bedroom, then back across to the front hall doorway of Lucretia Garfield's bedroom or through this bedroom, if feasible;
- . then either across the side hall or down the hallway and into a side hall to the Boys' bedroom;
- . then down the main hall to Zeb Rudolph's bedroom;
- . visitors would tour the Memorial Library for the final stop on the second floor, preferably with the Vault door open for public viewing of the refurnished document Storage Vault;
- . the tour would then descend the Main Staircase to the Reception Hall;
- . then across to double doorway of the Front Parlor, through the Parlor, Eliza Garfield's bedroom and sitting room, if feasible;



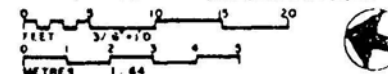
**CONDUCTED TOUR ROUTE
LAWNFIELD**

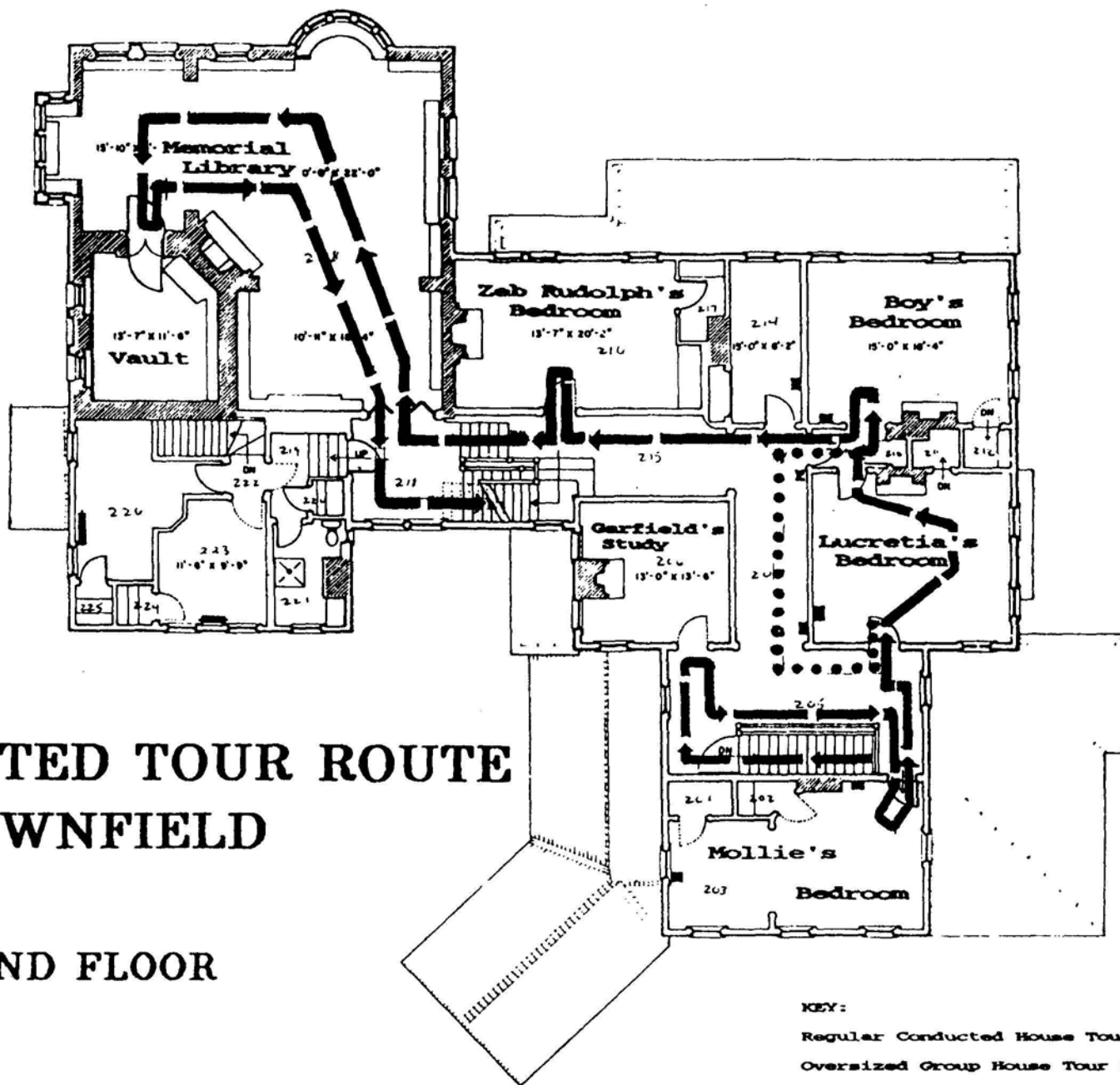
FIRST FLOOR

ON MICROFILM

- KEY:**
- Regular Conducted House Tour Route
 - Oversized Group House Tour Route
 - Entrance Route for Mobility Impaired Visitors

487/14,000
2 of 4





**CONDUCTED TOUR ROUTE
LAWNFIELD**

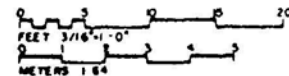
SECOND FLOOR

ON MICROFILM

KEY:

- Regular Conducted House Tour Route
- Oversized Group House Tour Route

487/17,000
3 of 4



- . if a "walk-through" of the Parlor and Eliza's bedroom is not feasible, the tour should in turn enter the Parlor from the Reception Hall and Eliza's bedroom from her sitting room;
- . the tour will finally proceed into the Dining Room for the final stop in the Main House;
- . visitors will continue through the Dining Room and exit the house through the side Dining Room door onto the Side Porch on their way to the Campaign House;
- . conducted tours through rooms would only be possible for small groups -- 8 to 10 persons or less, during times of visits of large groups [such as a school group or any organized bus tour] "walk-through" rooms would be cordoned off and tours would use main hallways;
- . the tour route for visitors with mobility impairments will be determined upon the completion of the final restoration of the main house.

Campaign House

Historic Furnishings. This single-room office will be refurnished to a period during the Presidential Campaign of 1880, guided by an Historic Furnishing Report. The scene should portray the beehive of activity that would have been evident at a national campaign headquarters placed in the setting of James A. Garfield's retreat/study with its book-laden walls.

Indoor "Wayside Exhibit." An enclosure barrier, just inside the doorway of this structure, will still be needed both to limit access to historic furnishings and to provide the necessary climate control to protect these historic furnishings. An "indoor wayside," mounted on the outside of that enclosure barrier, will interpret President Garfield's specific association with this room. The text would probably include the following:

- . that he helped lay the new flooring during the remodelling of the office
- . that he used it as a reading room/study/retreat prior to its use as the Campaign office;

. its use as the public and press focal point of the management of Garfield's 1880 presidential campaign.

Graphics would not be needed on the exhibit panel. The room itself is the "graphic". Design of this "indoor wayside exhibit" and the accompanying ambient audio track, should be developed in concord with the plans for this room developed in the Historic Furnishing Report.

Audio Station. An ambient audio track of no more than 60 to 90 seconds duration, including appropriate sounds such as the click of the telegraph and campaign management dialogue, will be developed and installed to interpret the historic scene audibly. This audio track could be either visitor activated, or automatically activated as visitors enter the exhibit area. The audio system will be designed and installed without damaging any of the historic fabric of the building.

Personal Services

Western Reserve Historical Society's on-site interpretation and visitor services staff will continue to provide information, orientation, and conducted tour services for visitors to President Garfield's home. They will also continue to provide staff support for a variety of special events, performances, seasonal programs, and seminars. However, those events currently using the Memorial Library room would be held in the visitor center's multipurpose auditorium. In doing so, it will help reduce unneeded stress load on the Main House, especially the second floor.

The system of allowing visitation to the Main House only by conducted tour and limiting the maximum size of each tour will greatly help the staff to limit and control traditional periods of extremely heavy visitation, such as those who crowd the house and grounds annually on the Fourth of July.

Some of the special events, for which the Lawnfield staff provides organizational, support, and liaison services, such as Civil

War reenactment unit encampments are held on the grounds of this site. Any landscaping plans for new developments, such as the planted screening for the new parking lot, should consider the possible space and location needs for these outdoor events.

Personnel Staffing Needed. This visitor plan and configuration assumes that the information desk/sales area in the Carriage House Visitor Center will be staffed at all times that the site is open, and that at least the current days and hours of operation of the park will continue. The site is currently open five and one-half days per week, ie., Tuesday through Saturday from 10 a.m. to 5 p.m. and 12 noon to 5 p.m. on Sunday.

Under most circumstances, we believe that only one person will be needed in the visitor center at any given time. However, staffing will need to consider relief for lunch, breaks, etc., the extra day of operation each week [ie. six days rather than five], and such things as sick leave, vacation time, training time, curatorial care duties, and time to complete administrative and management responsibilities.

The plan also assumes that under normal operations, one person will be needed in the Main House to conduct tours. But that person, too, will need relief for lunch and breaks. The same person can be used for relief for both the visitor center information desk and the conducted tours of the house. That person would also be able to be the second person in the Main House to conduct tours to meet times of increased needs for such services.

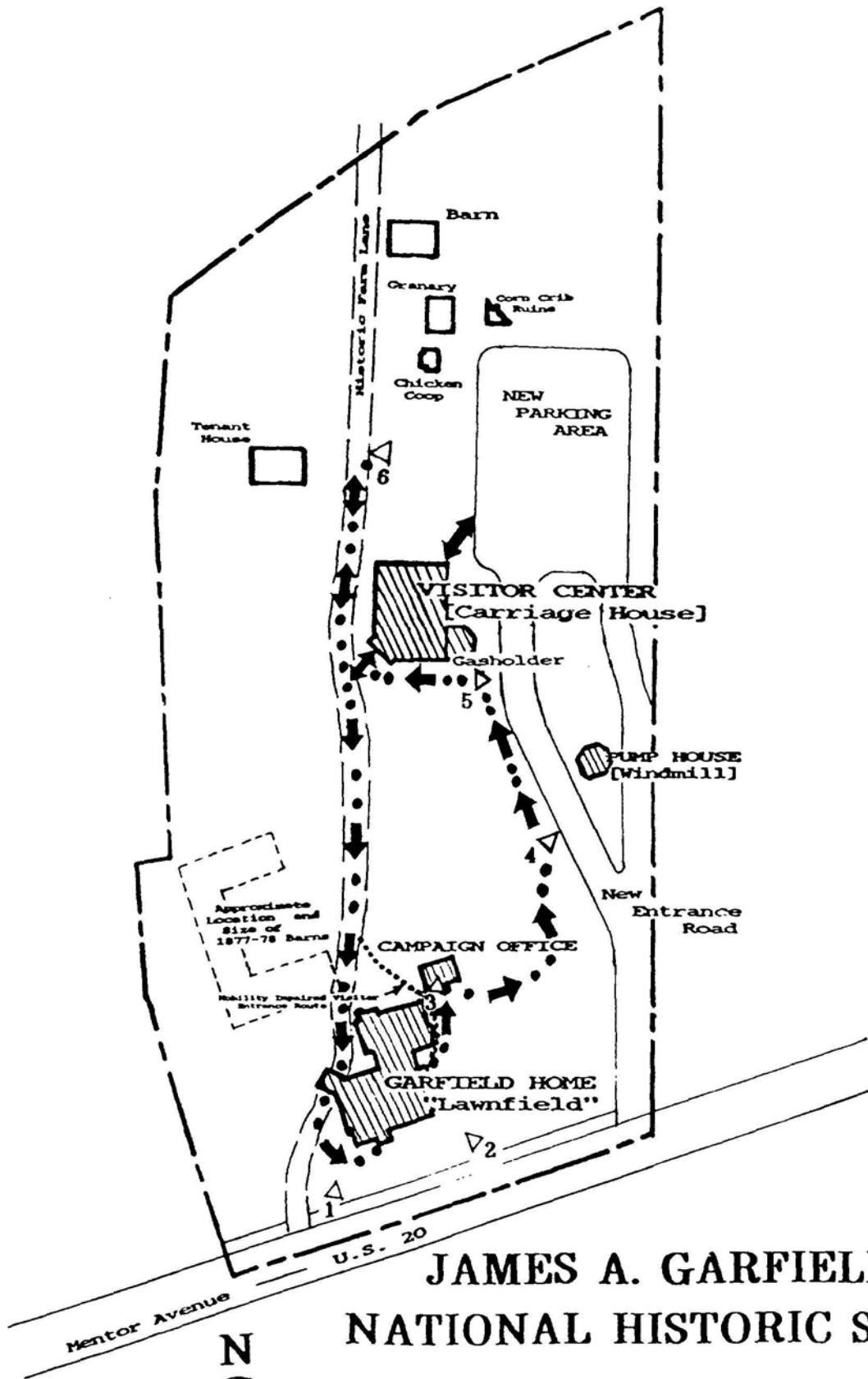
Based on the current hours and days of operation and the need for the above services, we project a need for a total of four full time and two part-time intermittent staff, including the site manager or curator. If the site's daily hours were expanded to seven full days of operation, then six full time staff, or any combination of full time and part time staff that is equivalent to six full time persons, would be needed.

The Historic Grounds

Walking Tour Route of the Grounds. To interpretively experience Lawnfield's historic grounds, visitors will be encouraged to walk the following route, as depicted on the "Visitor Flow Pattern" graphic on the next page:

- . walk from the parking area to the Visitor Center, entering it on the east or north side
- . leave the Visitor Center, exiting by the southwest double doorway;
- . along the historic farm road trace to back of the Garfield residence;
- . around the west side of the house [a small directional sign may be necessary to direct visitors past the Porte-Cochere Porch] to the Front [Campaign] Porch {which is yet to be restored to the house}, where they will wait for the beginning of the next conducted tour [reproductions of chairs which appear in historic photographs could be considered to provide seating for visitors awaiting the next tour which is visually compatible with the historic scene];
- . upon exiting the house from the Dining Room, proceed the short distance over to the Campaign House;
- . from the Campaign House, visitors would walk to the east around shrubbery and on to the Well House, which is scheduled to have the Windmill reconstructed on its roof;
- . from the Well House, visitors would proceed to the doorway of the historic Gasholder building [which is attached to the back of the Carriage House];
- . from that point, visitors would be directed to return to the front of the Visitor Center, where visitors would have the option of either [1] walking a short distance north on the historic farm road trace to a wayside exhibit about the farm, and its surviving outbuildings, or [2] going back into the Visitor Center and eventually returning to their vehicles in the parking lot.

Some specific elements of site development will be needed to make the visitor flow



JAMES A. GARFIELD NATIONAL HISTORIC SITE

Visitor Flow Pattern

- KEY:**
- Visitor Walking Route
 - Wayside Exhibit
 - ▨ Historic Structures Open to the Public

ON MICROFILM

pattern successful and safe. After visiting the Well House, some visitors may attempt to use the entrance/exit road to directly return to their auto, an inconspicuous walkway should be developed to provide a safe return path. However, because we want visitors to continue to the left to the Gasholder building and the front of the Visitor Center, we suggest a small direction sign with a text such as "<----- Historic Farm Buildings and Exhibits". Landscape plantings to screen the new parking lot from the Gasholder and the Well House will be needed to help guide visitors back to the front of the Visitor Center.

Wayside Exhibits. Key features around the grounds of "Lawnfield" will be interpreted by a series of six wayside exhibits. The locations of these exhibits are shown on the "Visitor Flow Pattern" map, following page 35. These six waysides would be:

- . **1. The Campaign Porch**
 - . a very low profile exhibit located southwest of the front of the Main House [near the front fence and the present entrance road to the historic site];
 - . to illustrate and interpret the key role of Garfield's front porch as a speaker's rostrum for the 1880 Presidential Campaign;
- . **2. The Physical Evolution of the Main House**
 - . also a very low profile exhibit located southeast of the main house [near the fence, under the purple beech tree];
 - . to illustrate and interpret the evolution of this residence from the tiny Dickey farm house, through President Garfield's 1880 remodeling and enlarging of the home, to Lucretia Garfield's 1885 addition which included the Garfield Memorial Library;
- . **3. Campaign House Interior**
 - . please see the "Campaign House" section [pp. 32-33] above for details;

- . 4. **The Well or Pump House**
 - . to be located in front of the Well House;
 - . to interpret the well, and Garfield's interest in and enthusiasm for applied sciences and technology;
- . 5. **Gasholder Building**
 - . to be located in or near the doorway of the building;
 - . to interpret the "why" and "how" of this natural gas regulator/holder and the system it fed;
- . 6. **The Farm, including the Historic Farm Lane from the "Garfield Railroad Stop"**
 - . to be located along the historic trace near the "Tenant House", facing the historic barn at the back.
 - . will identify and interpret [as necessary] all other surviving out-buildings including the 1880 U-shaped barn/stable complex, and farm features such as the historic road.

Relocate Historic Signs, Markers, and Flag Pole. For aesthetic reasons and to remove modern additions from the immediate vicinity of President Garfield's home, the team believes that most, if not all, 20th century historic markers and the flag pole which now surround the historic Garfield residence could and should be moved to the vicinity of the new entrance road, the new parking lot and the new visitor center. Specific suggestions are as follows:

- . **Flagpole**
 - . Move the metal flagpole [for the American flag, with its dedication marker] from its current location immediately southwest of the Main House to a suitable location near the new parking area;

. **"Garfield and the Civil War" Historic Marker**

. Move the metal historic marker [on a post] from its current location, adjacent to the flag pole, to a location adjacent to the new entrance road near the front fence [which will still allow it to be read from Mentor Avenue (U.S. 20)];

. **Cylindrical Garfield Memorial with Sundial**

. Move the cylindrical granite Garfield memorial [with sundial] from its current location northeast of the Campaign House to an appropriate, sunny location on the edge of the new parking lot;

. **Garfield Bas-relief Bust and RNHL Plaque**

. Working very closely with the Mentor Garden Club, consider moving the rough aggregate pillar with the Garfield bas-relief bust and the Registered National Historic Landmark bronze plaque, together with its flagstone walk and flower landscaped border to a prominent location near the walkway between the new parking area and the new visitor center.

Miscellaneous Grounds Development for Interpretation. To complement and support the interpretive media, we recommend the following grounds development projects:

. **Tour Route Path Surface**

. Consideration should be given to developing some type of a fully accessible path along the suggested foot path route, alternatives for handicapped accessibility need to be plainly designated; part of the path would be a segment of the restored historic farm lane [from a point immediately behind the Main House to the rear of the historic site, near the historic barn;

. If developed, it should clearly distinguish the difference between the restored historic trace and the new segments of the tour route;

. Cresting the pathway along its center line would provide drainage and help eliminate a muddy, puddled trail tread;

. **Stone Outlining of 1877-78 Barn Complex**

. If archeological evidence permits accurate location, outline the perimeter of the U-shaped 1877-78 barn complex with flag stones installed flush with the ground;

. Outlining the complex will help visitors perceive the size, shape and location of Mentor Farm barns in President Garfield's day;

. Mounting these stones flush with the ground will facilitate easy grounds operations and be less of a safety hazard than a raised stone outline [which would be a tripping hazard].

Publications

Unigrid Folder. A standard NPS unigrid folder, perhaps including a guide and accompanying guide map to the grounds, should be programmed and prepared for this historic site;

Hearing Impaired Guide. With the elimination of self-guiding tours through the Main House and the subsequent elimination of the self-guiding leaflet, some type of a guidebook should be prepared in small quantities [perhaps xeroxed] to provide programmatic interpretation for the house tour and the "spoken word" audios in the visitor center. Unlike the current self-guiding house tour leaflet, this guidebook should focus on Garfield the person rather than an historic structures and objects tour, especially for the house tour portion.

Potential Sales Item. As the new sales area in the Carriage House Visitor Center is established, the Historic Resource Study: James A. Garfield National Historic Site written by Ronald W. Johnson should be considered as a possible sales item.

Physical Access for the Mobility Impaired

The Campaign House, the first floor of the Main House, and the second floor of the Main House, including both the bedroom level and the Memorial Library level, must be accessible for the mobility impaired. However, the team realizes that an equitable balance needs to be struck between Congressionally mandated accessibility requirements on one hand and the myriad of historic preservation laws established to assure cultural resource integrity and preservation on the other hand.

We understand that the architectural and engineering contractor selected by the Denver Service Center will be searching for a solution to this lack of accessibility. Our team suggests that perhaps a lift, such as the one now in use at the Canal Visitor Center at Cuyahoga Valley National Recreation Area, from the old curator's apartment to the second floor might be at least part of the total access package solution.

OUTLINE OF MEDIA AND COST ESTIMATES

- [A] - Audiovisuals; [H] - Historic Furnishings
 [E] - Museum Exhibits; [P] - Publications;
 [W] - Wayside Exhibits

<u>Location</u>	<u>Media Proposals</u>	<u>Planning</u>	<u>Production</u>	<u>Equipment</u>
Carriage House Visitor Center	[A] Plan/pro-duce/install 10-12 min. motion picture putting Garfield's life at Mentor Farm in context with his entire life; captioned for the hearing impaired [see pp. 22-23]	(06) 8,000 (61) 15,000	(62) 150,000	(63) 59,000 [see note "A"]
	[A] Plan/pro-duce/install 12-15 min. slide/sound program of historic house tour, as an alternative visitor experience during the restoration of the Main House; captioned for the hearing impaired [see pg. 23]	(61) 3,000	(62) 23,000	(63) [see note "A"]
	[E] Plan/design/install orientation panel, and museum exhibits; approx. 1800 sq.ft. [see pp. 23-26]	(06) 23,000 (51) 143,000 [see note "B"]	(52) 689,000	(53) 450,000 [see note "C"]

<u>Location</u>	<u>Media Proposals</u>	<u>Planning</u>	<u>Production</u>	<u>Equipment</u>
	[A] Plan/pro-duce/install two 3-5 min. audio programs of salient excerpts of Garfield's speeches, sermons, etc. to be integrated with exhibits [see pg. 26]	(61) 2,000 [see note "D"]	(62) 6,000 [see note "D"]	(63) 6,000
Main House and Campaign House	[H] Research/prepare an Historic Furnishings Report for 16 rooms, halls and staircase in the Main House, and the single room Campaign House [see pp. 26-29 & 32]	(56) 45,000		
	[H] Historic furnishings production, including necessary conservation care for 16 rooms, halls & staircase of Main House and single room of Campaign House [see pp. 26-29 & 32]		(65) 450,000	(53) [see note "B"]

<u>Location</u>	<u>Media Proposals</u>	<u>Planning</u>	<u>Production</u>	<u>Equipment</u>
Campaign House	[A] Plan/pro-duce/install 60 to 90 second audio message of ambient sounds [see pg. 33]	(61) [see note "D"]	(62) [see note "D"]	(63) 3,000
Wayside Exhibits	[W] Plan/pro-duce/install 6 exhibits interpreting salient features of the Lawnfield grounds [see pp. 32-33 & 36-37]	(06) 3,000 (54) 9,000	(55) 42,000	

=====
Notations:

- A -- This estimate is for the entire standard auditorium projection booth equipment, which includes both the motion picture projection equipment with the film tree and the slide/sound equipment needed for the 12-15 minute slide program.
- B -- This estimate includes cost of graphic and object research, and acquisition of original graphics for exhibits.
- C -- This estimate includes the cost of conservation treatment for historic furnishings for the Main House and the Campaign House; this estimate is as accurate as is available until the completion of a collection inventory and conservation conditions survey.
- D -- This estimate incorporates the planning and production for both the audios of Garfield's speech excerpts and the ambient audio track for the Campaign House.

SUMMARY COST ESTIMATE TOTALS BY MEDIA

<u>MEDIA</u>	<u>PLANNING</u>	<u>PRODUCTION</u>	<u>EQUIPMENT</u>
AUDIOVISUAL	\$ 28,000	\$ 179,000	\$ 68,000
MUSEUM EXHIBITS	166,000	689,000	450,000
HISTORIC FURNISHINGS	45,000	450,000	-----
WAYSIDE EXHIBITS	12,000	42,000	-----
TOTALS, ALL MEDIA	<u>\$251,000</u>	<u>\$1,360,000</u>	<u>\$518,000</u>
GRAND TOTAL			\$ 2,029,000

BIBLIOGRAPHY AND OTHER INFORMATION SOURCES

BOOKS, REPORTS AND PERIODICALS:

Booraem, Hendrick V(5th). The Road to Respectability: James A. Garfield and His World, 1844-1852. Cleveland: Western Reserve Historical Society, 1987.

Brown, Harry James, and Frederick D. Williams, eds. The Diary of James A. Garfield (1848-1881). 4 Volumes [I, 1848-1871; II, 1872-1874; III, 1875-1877; IV, 1878-1881]. Lansing, MI: Michigan State University Press, 1967.

Caroli, Betty Boyd. First Ladies. New York/Oxford: Oxford University Press, 1987. {See Chapter 4, "The Limited Promise of the 'New Woman' (1877-1901)"}

Comer, Lucretia Garfield. Strands from the Weaving: The Life of Harry A. Garfield. New York: Vantage Press, 1959. {Best published work on the President's wife, Lucretia Garfield}.

Ferris, Robert G., ed. The Presidents: Historic Places Commemorating the Chief Executives of the United States. The National Survey of Historic Sites and Buildings, Volume XX. Washington: National Park Service, 1976.

Fies-Brown, Ruth. Mollie Garfield in the White House. New York: Rand McNally and Company, 1963.

The James A. Garfield Monument at Lake View Cemetery, Cleveland, Ohio. n.p., n.d.

Johnson, Ronald W. Historic Resource Study: James A. Garfield National Historic Site. Denver: National Park Service, Denver Service Center, September, 1984.

Leech, Margaret, and Harry James Brown. The Garfield Orbit. New York: Harper & Row, Publishers, 1978.

McElroy, Richard L. James A. Garfield: His Life and Times, A Pictorial History. Canton, OH: Daring Books, 1986.

National Park Service. General Management Plan/Environmental Assessment, James A. Garfield National Historic Site, Ohio. Denver: National Park Service, Denver Service Center, July, 1986.

_____. Statement for Management, James A. Garfield National Historic Site, Ohio. Omaha: National Park Service, Midwest Regional Office, May, 1984.

Newman, Paul. Lawnfield: Draft Historic Structure Report, James A. Garfield National Historic Site. Denver: National Park Service, Denver Service Center, September, 1989.

Peskin, Allan. Garfield. Kent, OH: The Kent State University Press, 1978. {Considered to be the definitive biography of James A. Garfield}.

_____. "Presidents Anonymous," Timeline Forum, Oct-Nov, 1985. Columbus, OH: Ohio Historical Society, 1985.

Schlinke, John T., et al. Historic American Buildings Survey: James A. Garfield National Historic Site, "Lawnfield", Ohio. Denver: National Park Service, Denver Service Center, 1985.

Shaw, John. "Lucretia and Her Letters: The Garfield Correspondence," The Hiram (College) Broadcaster Magazine. Spring, 1986.

Sibert, Russell D. "Monument to a President: Garfield's Tomb Preserves Echoes of a Bygone Era and Man," Hiram: The Magazine for Alumni and Friends of Hiram College. Winter, 1990.

Wasson, Woodrow W. James A. Garfield: His Religion and Education. Nashville: Tennessee Book Company, 1952.

Williams, Frederick D., ed. The Wild Life of the Army; The Civil War Letters of James A. Garfield. East Lansing, MI: Michigan State University Press, 1964.

VIDEOTAPES:

Chickamauga -- River of Death: The Battle of Chickamauga 125th Anniversary [Sept. 17-18, 1988] Video. Videovision Productions, 1988.

Dale Maugan's 1989 Conducted Tour of Lawnfield.

Garfield and His Times: A Lecture by Dr. Allan Peskin -- June 4, 1989. Harper & Row, 1989.

James A. Garfield: A Place in History. Ohio Humanities Council, April, 1985.

POSSIBLE ORAL HISTORY SOURCES:

Eleanor B. Garfield -- Now in her 90's; Granddaughter-in-Law of President Garfield [wife of Rudolph Hills Garfield, Sr., son of James Rudolph Garfield]; former Mayor of Mentor, Ohio; Prime candidate for oral history, although she is up in years her mind is still sharp.

Polly Garfield Hallaran -- Now in her 80's or 90's; Granddaughter of President Garfield, daughter of Abram Garfield; also a prime candidate for oral history, her mind is still sharp.

Vera Sutliff -- First Curator [along with her late husband] of Lawnfield after its donation from the Garfield Family to the Western Reserve Historical Society; held the position from 1936-1938; should be a good source of furniture placement at the time of transfer of the house and furniture to the Society.

Other Lawnfield Curators who may be good oral history sources:

Frances N. Slack [1966-1977]

Eric Cardinal [1978-1984]

THE TEAM

Core Team:

Tom Danton,	Interpretive Specialist, Midwest Regional Office
Karine Erlebach,	Audio Visual Production Officer, Harpers Ferry Center
Al Levitan,	Furniture Conservator, Harpers Ferry Center
Neil Mackay,	Exhibit Planner, Harpers Ferry Center
Dale Maugans,	Former Site Manager, Western Reserve Historical Society, James A. Garfield NHS
Carol Petravage,	Historic Furnishings Staff Curator, Harpers Ferry Center
Chris Schillizzi,	Acting Chief of Interpretation, Cuyahoga Valley NRA
Tom White,	Interpretive Planner & Team Captain, Harpers Ferry Center

Consultants:

Siegfried Buerling,	Director of Properties, Western Reserve Historical Society
Mark Chavez,	Regional Historical Architect, Midwest Region
Bob Martin,	Assistant Superintendent, Cuyahoga Valley NRA

Eunice May,	Interpreter, Western Reserve Historical Society, James A. Garfield NHS
Paul Newman,	Historical Architect, Central Team, Denver Service Center
Ray Price,	Chief, Wayside Exhibits, Harpers Ferry Center
James Regan,	Associate Curator, Western Reserve Historical Society, James A. Garfield NHS
Dick Steeves,	Project Manager, Central Team, Denver Service Center
George Thorson,	Chief Historical Architect, Central Team, Denver Service Center
Dave Wallace,	Historic Furnishings Staff Curator, Harpers Ferry Center

APPENDIX ++++

The Cooperative Agreement Between the National Park Service and The Western Reserve Historical Society Pertaining to James A. Garfield National Historic Site was signed by Contracting Officer Charles E. Carlson, Midwest Regional Office, and President Paul W. Walter, Board of Trustees of The Western Reserve Historical Society, on September 21, 1987. A copy of this document, with its September, 1989 amendment, is incorporated into this prospectus for reference.

COOPERATIVE AGREEMENT
between
NATIONAL PARK SERVICE
and
THE WESTERN RESERVE HISTORICAL SOCIETY
pertaining to
JAMES A. GARFIELD NATIONAL HISTORIC SITE

Article I Background and Objectives

This Agreement is made and entered into between the National Park Service, hereinafter referred to as the "Service," and the Western Reserve Historical Society, a not-for-profit corporation organized and existing under the laws of the state of Ohio, acting by and through its duly authorized trustees and officers, hereinafter referred to as the "Society."

WITNESSETH:

WHEREAS, Section 1201 of the Act of December 28, 1980, 94 Stat. 3545, authorizes the Secretary of the Interior to acquire the property known as "Lawnfield" located at 8095 Mentor Avenue in the city of Mentor, Lake County, Ohio, for designation as the James A. Garfield National Historic Site, hereinafter referred to as the "Site." The Secretary of the Interior is directed to administer the Site in accordance with the Act of August 21, 1916, (39 Stat. 535) as amended and supplemented, and the Act of August 21, 1935, (49 Stat. 666) as amended, and

WHEREAS, Section 1201 of the Act of December 28, 1980, further authorizes the Secretary of the Interior to enter into an Agreement with the Western Reserve Historical Society pursuant to which the Society may operate and maintain the Site and charge reasonable admission fees, notwithstanding any other provision of law, which may be used to apply against the cost of such operation and maintenance, and

WHEREAS, the Society has owned and operated a portion of the Site including the historic Garfield residence, since 1937, and

WHEREAS, the Society, as a prior condition to this Agreement, will donate this property to the United States of America, and

WHEREAS, the Society, as a part of the consideration for the gift and at the request of the Service desires to continue to manage and operate this portion plus the remainder of the Site, now owned by the Federal Government.

NOW, THEREFORE, in consideration of the foregoing, and in consideration of the mutual promises herein expressed, and pursuant to the Acts of Congress cited above, the said parties have covenanted and agreed and by these presents do covenant and agree to and with each other as follows:

Article II

Statement of Work

Article IIa

The Service agrees as follows, provided that the obligation of the United States of America is, in any one fiscal year, dependent upon the appropriation made by Congress for that fiscal year:

1. To permit the Society to administer the Site during the term of the Agreement for the purpose of preserving and exhibiting the Site to the public as a National Historic Site.
2. To give suitable space to the Site in such publications and circulars as may be printed and issued by the Service to inform the public regarding the National Park System.
3. To aid the Society, in accordance with established National Park Service policies, in the preservation of the Site by providing technical assistance, training, and funds to increase the security of artifacts in accordance with 16 U.S.C. 18(f)(4) to the extent such funds are made available by appropriation or donation for the Site.
4. To assist the Society in its undertaking, based on approved annual budget submissions, by paying thereto annual amounts for protection, administration, maintenance, and operation of the Site, provided that such funds are appropriated by the Congress for such purposes and for use at the Site. The availability of Federal funding is contingent upon appropriations of Congress.
5. If funds are not provided by the Service, for any reason, the Society shall not be required to finance the maintenance and operation of the Site beyond the limits to which, at the time, it has raised separate operating support from admissions, fees, sales or other authorized means, within the context of this agreement.

Article IIb

The Society agrees,

1. To administer the Site for the purposes set forth in Article I of this Agreement and for no other purpose.
2. To collect a fee for admission to the Site in an amount agreed to by the National Park Service, to keep an accurate account of admissions collected, and to apply such funds to the cost of the operation and maintenance of the site.
3. To prepare and present to the Superintendent of Cuyahoga Valley National Recreation Area budget requests and supporting justification for such requests at least 20 months prior to the beginning of the fiscal year for which funds are being sought. However, provisions shall be made to prepare a budget request and finance the operations during any fiscal year for which the 20-month period is not applicable.

4. To preserve, protect, maintain, and operate the Site in accordance with rules and regulations of the Secretary of the Interior and statutes applicable to National Park Service areas. The Society will provide staffing and day-to-day maintenance, such as cleaning, heat, power, light, and routine miscellaneous repairs, in so far as the Society is capable within its resources. Cyclic maintenance and capital development will be programmed and funded by the Service as a part of the budget to maintain and operate the site, subject to appropriations by Congress.
5. To operate and maintain the Site in accordance with the General Management Plan, and only to make alterations or major repairs to the buildings, appurtenances, and grounds which are in conformance with the General Management Plan or have been approved by the Service.
6. To allow access by the public to the buildings and grounds at all reasonable times and under such reasonable conditions and restrictions (including payment of a fee as set forth in Article II, paragraph b) as mutually agreed upon by the Society and the Service. Special events, such as the celebration of the Garfield birth date, Garfield political events, and civic affairs to promote knowledge and use of the facilities are included within the meaning of this paragraph.
7. To secure prior approval in writing of the Service before erecting or placing, or permitting the erection or placement of, any permanent monument marker, tablet, or other memorial in or upon the buildings or grounds of the Site, and before altering any existing marker or other memorial. This section shall not be construed to prohibit the placing of signs within the buildings or upon the grounds for the information and direction of the public or decorations for special events. The design and location of any signs to indicate that it is managed by the Society, shall be mutually agreed upon by the Society and the Service.
8. The contents of Lawnfield, including the furnishings, fine art, decorative art and other artifacts, papers and miscellaneous objects, are the property of the Society. Irrespective of any other terms of this Agreement, the Society shall retain ownership of these contents and shall have the right to remove them or relocate them during the term of this Agreement so long as their removal or relocation does not conflict with the intention of this Agreement regarding the presentation of the Site for educational and public visiting purposes and that the Society shall notify the Service of its intention to remove or relocate items and its reasons for so doing. The Society will catalog the historic furnishings, artifacts, papers and other curatorial items in its collection that are placed at the Site and will maintain standard registrarial records of them.

Provenience information and historical documentation for each object and a current record of the complete inventory will be provided to the Service. The museum collection will be protected from controllable harmful environmental conditions, accidental damage, vandalism, and theft; it will be preserved, conserved, and maintained according to the curatorial policies and standards prescribed by the Service. Other professional curatorial standards and practices may be acceptable and may be approved by the Service. The inventory of the Society's collection will include a detailed description of the condition of each object and details about any repairs, treatments, or maintenance work that may be needed.

Article IIc

The parties jointly agree:

1. That subject to the availability of funds and personnel, the Society shall provide for interpretive services to the public, and other services normally appropriate to the administration, protection, and operation of a National Historic Site, such as, but not limited to, visitor information and guide and lecture service. The Society may provide appropriate items for sale subject to the prior approval by the Service.
2. That the Society shall appoint as its representative a full-time administrator, subject to funds being available, responsible for the operations of the Site; the administrator shall be located at the Site.
3. That the authorized representative of the Service shall have the right at all reasonable times to inspect any part of the premises and evaluate any aspects of the operations. Copies of such evaluations shall be furnished to the Society and it may submit appropriate comments.
4. That materials purchased from funds provided by the Society under the terms of the Agreement and not consumed in the operation of the Site shall remain the property of the Society.

Article III

Term of Agreement

This Agreement shall be in effect for a period of five (5) years unless terminated at an earlier date by either party in accordance with the provisions of Article VII. The Agreement shall be renewable for additional periods, as mutually agreed upon by the Society and the Service.

Article IV

Key Officials

The Service shall be represented by the Superintendent, Cuyahoga Valley National Recreation Area located at 15610 Vaughn Road, Brecksville, Ohio 44141, unless the Society is advised in writing by the Service as to a different designee.

The Society shall be represented by the Executive Director, The Western Reserve Historical Society located at 10825 East Boulevard, Cleveland, Ohio 44106, unless the Service is advised in writing by the Society as to a different designee.

Article V

Award

When available, funds will be transferred promptly to the Society on a reimbursement basis for costs incurred, as detailed on invoices with supporting documentation submitted from time to time at the convenience of the Society. The availability of these funds shall be subject to annual appropriations by Congress and other constraints. Invoices shall be submitted to the Superintendent, Cuyahoga Valley National Recreation Area, National Park Service, 15610 Vaughn Road, Brecksville, Ohio 44141. If, as, and when the Service is made aware that future funding will not

be available, the Society shall be notified in writing as to the situation. In any event, the Society shall be reimbursed for any expenditures approved by the annual budget submission in accordance with Article V hereof.

An initial award of \$468,000 for rehabilitation and \$25,000 for cyclic maintenance is provided for the work items listed on Schedule I.

Article VI Reports

A brief report of progress in administering the site shall accompany each request for reimbursement. The report should give a clear understanding of the work accomplished to justify the funds requested.

Article VII Termination

This agreement may be terminated by either party in accordance with Clause 29 of the enclosed General Provisions. The Government may unilaterally terminate the agreement in accordance with Clause 30 of the enclosed General Provisions or in accordance with the Termination for Convenience of the Government clause found in section 52.249-5 of the Federal Acquisition Regulations, which latter clause is hereby incorporated by reference in this agreement.

Article VIII Other Provisions

Whenever the terms "Director," "NPS," or "Service" are used herein, they shall be construed to extend to authorized representatives of the National Park Service, or to any other duly authorized representative of the Department of the Interior.

That the right of occupancy and right to operate conferred by this Agreement shall be subject to the laws of Congress governing the National Historic Site and to the rules and regulations promulgated thereunder, whether now in force or hereafter enacted or provided; and the mention of specific restrictions, conditions, and stipulations herein shall not be construed as in anyway impairing the general powers of supervision, regulation, and control by the Service.

The Society shall carry insurance on Government buildings and Government owned contents and other Government property assigned to the Society against losses by fire and all other hazards, including "extended coverage," in amount to cover their full currently appraised replacement value. Such policies shall show the United States as a named coinsured. In the event of loss, in whole or in part, of any such Government possessions as may be insured pursuant to the provisions hereof, the Society shall apply any proceeds it may receive from such insurance towards either;

1. Replacement, rehabilitation, or repair of such property or
2. Construction of such other improvements as the Director may direct.

The Society shall also carry insurance in the amount of at least \$1,000,000 against public and employee liability and similar hazards as is customary among prudent operators of museum sites under comparable circumstances, and such policies shall indicate that the United States is a named coinsured.

The Society agrees to establish clear lines of fiscal responsibility and accountability for Federal funds provided for the operation of James A. Garfield National Historic Site and admissions collected in accordance with Article II, paragraph b.

Article IX Supporting Documents

"Cultural Resources Management Guideline," National Park Service guideline NPS-28.

Manual for Museums.

The Secretary of the Interior's Standards for Rehabilitation.

"General Provisions," (Appendix A) of National Park Service guideline NPS-20 (Federal Assistance and Interagency Agreements) are attached hereto and made a part of this agreement.

IN WITNESS WHEREOF, the parties hereto have executed this Cooperative Agreement as of the last date written below.

NATIONAL PARK SERVICE

By Charles E. Carlson

Title Contracting Officer

Date SEP 21 1987

THE WESTERN RESERVE HISTORICAL SOCIETY

Approved by the Board of Trustees at its meeting at Cleveland, Ohio on

14th day of Sept., 1987.

By Paul W. Walter

Title President

Date 14 September 1987

Schedule I

Listing of estimated rehabilitation, cyclic maintenance, and administrative expenses to be paid under the initial appropriation of \$493,000:

Rehabilitation

MAIN HOUSE:

Chimney Repair/Replacement	\$ 25,000
Fire and Intrusion Alarm Systems	24,000
Electrical Entrance Service	20,000
Lightning Protection	8,000
Flat Roof Repairs	10,000
Carpentry Repairs	30,000
Paint Exterior	60,000
Mechanical Equipment/Dehumidification/Controls	30,000
Structural Investigations	15,000
Repointing	60,000
Interim Handicapped Access	8,000
Restrooms/Plumbing	30,000

CARRIAGE BARN:

Roof Replacement	40,000
Carpentry Repairs	10,000
Paint Exterior	20,000

CAMPAIGN HOUSE:

Mechanical Equipment	10,000
----------------------	--------

TENANT HOUSE:

Mechanical Systems/Finishes	<u>34,000</u>
-----------------------------	---------------

\$ 434,000

Cyclic Maintenance

PUMP/WELL HOUSE:

Roofing, Pointing, Carpentry	\$ 13,000
------------------------------	-----------

CAMPAIGN HOUSE:

Exterior Repairs/Painting	<u>12,000</u>
---------------------------	---------------

\$ 25,000

Administration

Director of Properties 600 hours @ \$36 =	\$ 21,600
Resident Curator 125 hours @ 10.40 =	1,300
Clerical Staff 145 hours @ 20.80 =	3,000
Comptroller 48 hours @ 42.00 =	2,000
Executive Director and Staff 72 hours @ 60 =	4,300
Mileage. 8800 miles @ 0.205 =	<u>1,800</u>
	\$ 34,000

NOTE: All figures are estimates and adjustments within each major division (i.e. rehabilitation) may be required once the work is underway.

Department of the Interior
National Park Service
Midwest Region

SUPPLEMENTAL AGREEMENT

Number: CA6160-7-8029 Term: From Effective Date: 09-26-89 thru 09-30-91

Modification Number: 1

TO PROVIDE PROJECT FUNDING UNDER COOPERATIVE AGREEMENT/MASTER COOPERATIVE
AGREEMENT NUMBER: _____

COOPERATOR: The Western Reserve Historical Society
(Name and Address) 10825 East Boulevard
Cleveland, Ohio 44106

Project Title: Maintenance of Lawnfield

FISCAL YEAR 1989 FUNDING:

(Cite Account No. 6380-6601-301-N-2500-9) TOTAL: NOT TO EXCEED \$26,000.00

The Scope of Work Is:

- Attached Hereto and Incorporated Herein
 Previously Defined and Included in the (Master) Cooperative Agreement

The Cooperator's Proposal Is:

- Incorporated Herein
 Previously Defined and Included in the (Master) Cooperative Agreement

To provide current year funds to continue operation of the
James A. Garfield National Historic Site known as Lawnfield.

This working agreement is subject to all General Provisions and Administrative Provisions included in the Cooperative Agreement/Master Cooperative Agreement, dated 09-21-1987. The term of the Cooperative Agreement/Master Cooperative Agreement is from 09-21-87 to 09-30-92.

COOPERATOR

Signature: Theodore Anton Sande
Name: Theodore Anton Sande
Title: Executive Director
Date: 25 September 1989

NATIONAL PARK SERVICE

Signature: Gerald T. Mc Clarmon
Name: Gerald T. Mc Clarmon
Title: Contracting Officer
Date: 9/29/89