

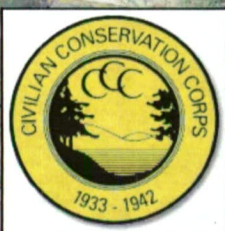
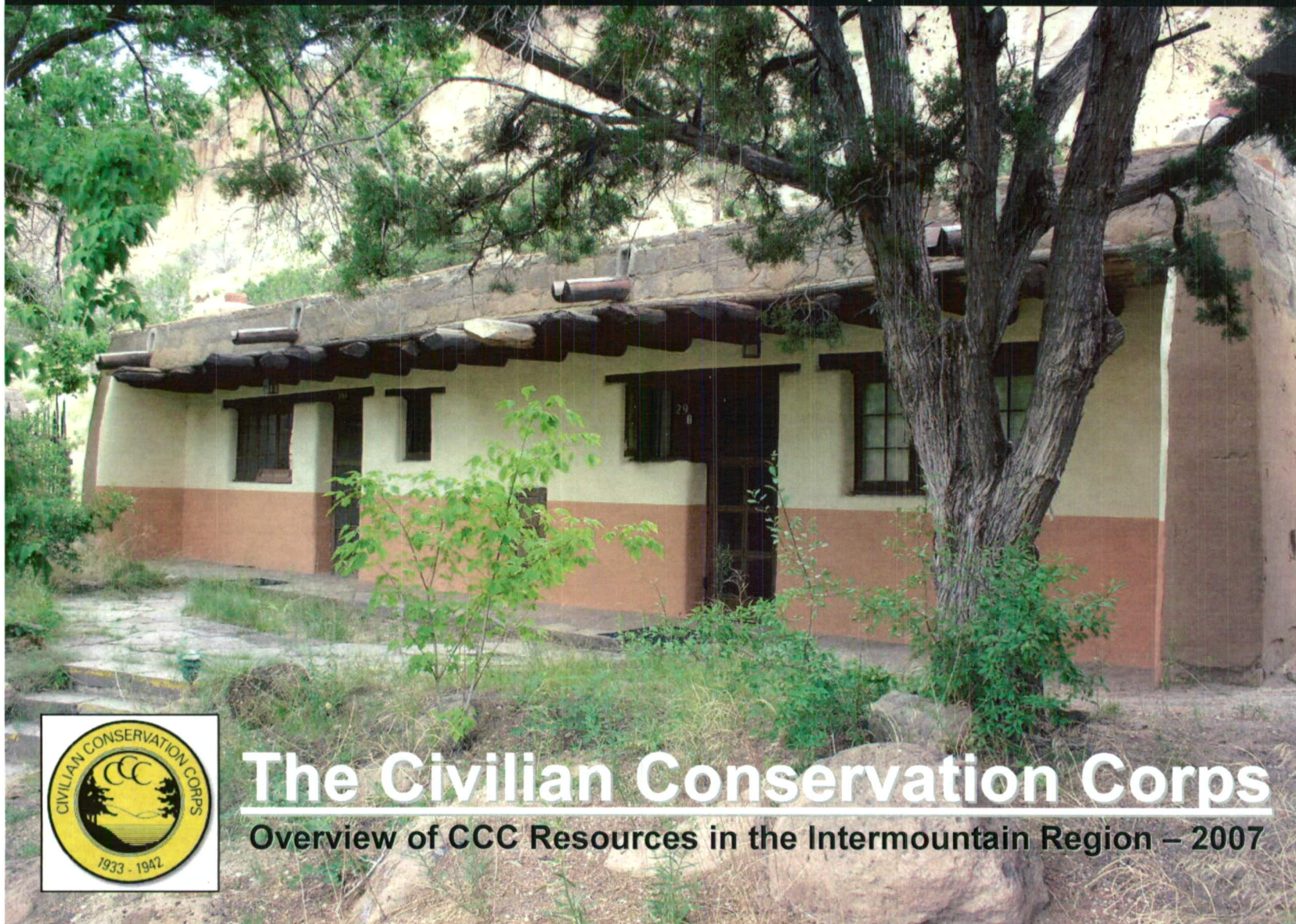
Intermountain Region CCC Resources

Intermountain Region
Arizona, Colorado, Montana, New Mexico,
Oklahoma, Texas, Utah, Wyoming

National Park Service
U.S. Department of Interior



EXPERIENCE
YOUR
AMERICA



The Civilian Conservation Corps

Overview of CCC Resources in the Intermountain Region – 2007

Intermountain Region CCC Resources

Intermountain Region
Arizona, Colorado, Montana, New Mexico,
Oklahoma, Texas, Utah, Wyoming

National Park Service
U.S. Department of Interior



EXPERIENCE
YOUR
AMERICA

Civilian Conservation Corps 1933-1942

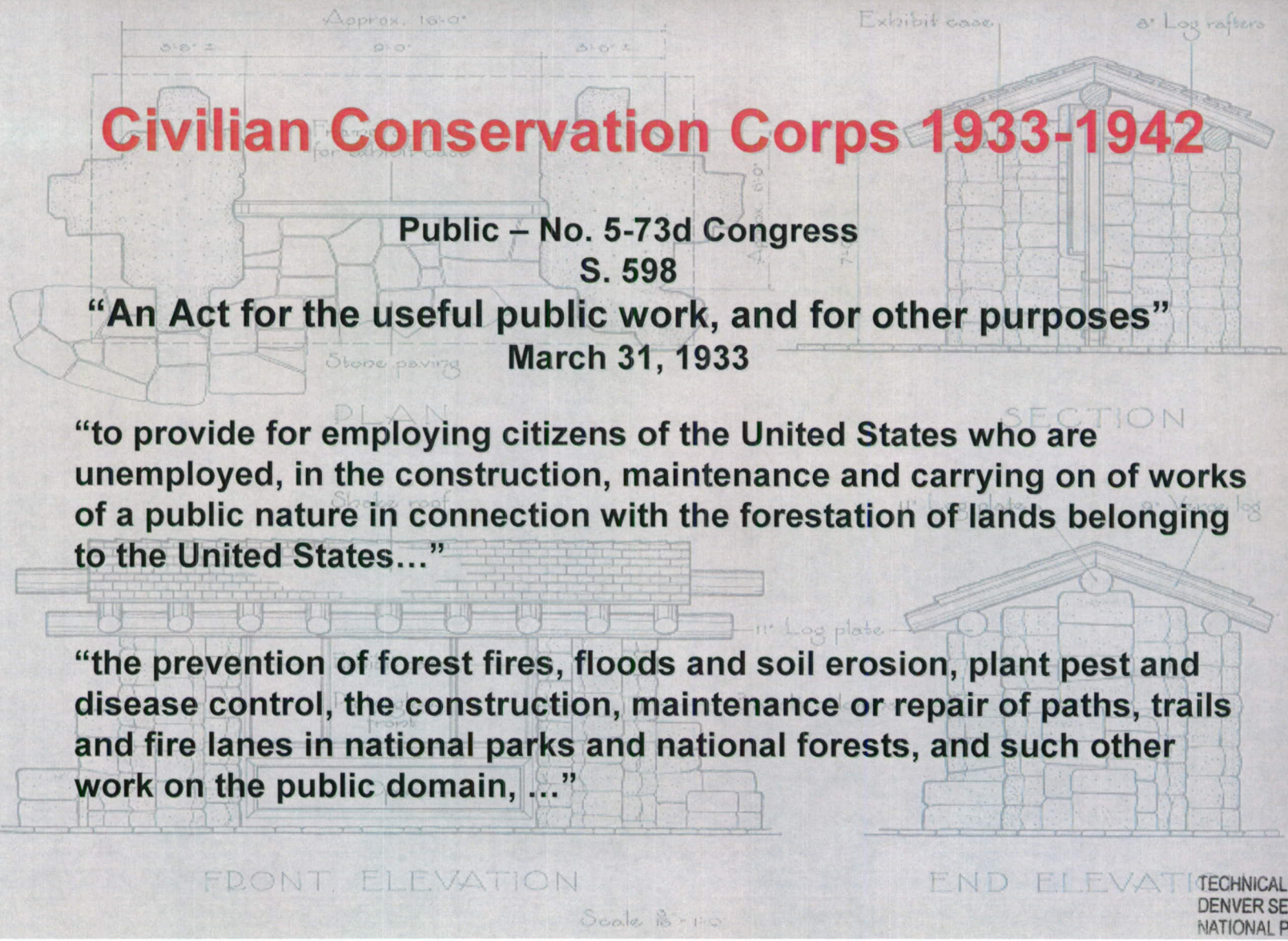
Public – No. 5-73d Congress
S. 598

“An Act for the useful public work, and for other purposes”

March 31, 1933

“to provide for employing citizens of the United States who are unemployed, in the construction, maintenance and carrying on of works of a public nature in connection with the forestation of lands belonging to the United States...”

“the prevention of forest fires, floods and soil erosion, plant pest and disease control, the construction, maintenance or repair of paths, trails and fire lanes in national parks and national forests, and such other work on the public domain, ...”



TECHNICAL INFORMATION CENTER
DENVER SERVICE CENTER
NATIONAL PARK SERVICE

Intermountain Region CCC Resources

Intermountain Region
Arizona, Colorado, Montana, New Mexico,
Oklahoma, Texas, Utah, Wyoming

National Park Service
U.S. Department of Interior



75th Anniversary of CCC March 31, 2008

To Prepare For Anniversary:

- ❖ What is the Extent of the CCC Resources?
- ❖ Where are the Resources Located?
- ❖ What are the Resource Types?
- ❖ Is There Sufficient Information to Evaluate Significance for the Potential Resources?
- ❖ What are the Overall Conditions of the Potential Resources?
- ❖ Can We Correctly Identify CCC Features?

What Areas Still Need to be Addressed?



Obsidian Cliff Kiosk – Yellowstone NP

EXPERIENCE
YOUR
AMERICA

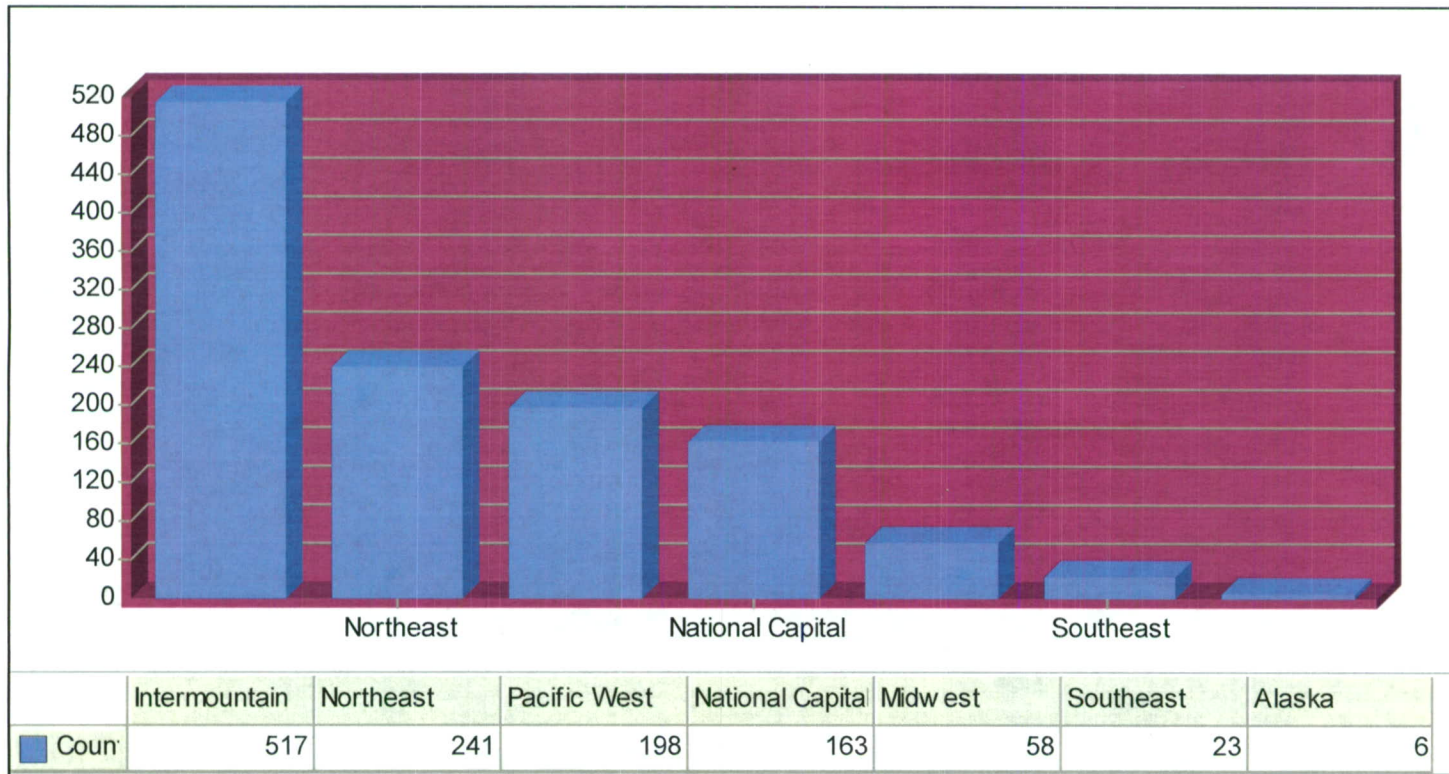
Intermountain Region CCC Resources

Intermountain Region
Arizona, Colorado, Montana, New Mexico,
Oklahoma, Texas, Utah, Wyoming

National Park Service
U.S. Department of Interior



EXPERIENCE
YOUR
AMERICA



**Number of Specifically Identified CCC Resources on the LCS by Region
November 2005**

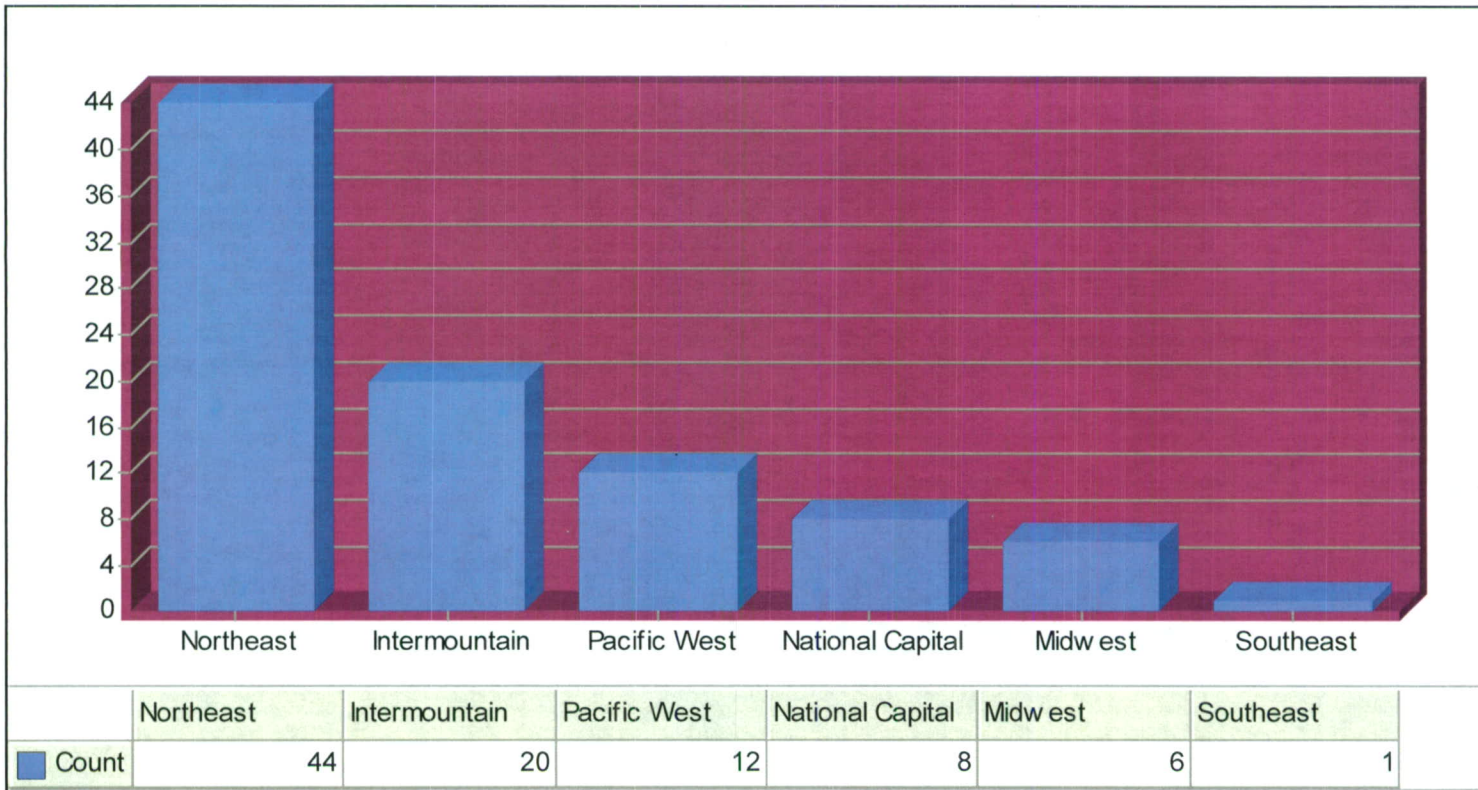
Intermountain Region CCC Resources

Intermountain Region
Arizona, Colorado, Montana, New Mexico,
Oklahoma, Texas, Utah, Wyoming

National Park Service
U.S. Department of Interior



EXPERIENCE
YOUR
AMERICA



Number of Specifically Identified WPA Resources on the LCS by Region
November 2005

Intermountain Region CCC Resources

Intermountain Region
Arizona, Colorado, Montana, New Mexico,
Oklahoma, Texas, Utah, Wyoming

National Park Service
U.S. Department of Interior



EXPERIENCE
YOUR
AMERICA

Intermountain Region CCC Statistics:

- ❖ Approximately 1,000+ CCC Buildings and Structures within the Region. (Resources such as Roads & Landscapes have Multiple Features not Reflected in the Overall Count.)
- ❖ 28 Known Park Units with CCC Resources
- ❖ 24 Known Park Units with CCC Camps within Park Boundaries
- ❖ Total of 68 Former CCC Camps within the 24 Park Units (1941)
- ❖ CCC Work in the Region Includes Over 30 Major Categories of Project Types



Intermountain Region CCC Resources

Intermountain Region
Arizona, Colorado, Montana, New Mexico,
Oklahoma, Texas, Utah, Wyoming

National Park Service
U.S. Department of Interior



EXPERIENCE
YOUR
AMERICA

Types of CCC Buildings, Structures & Projects Found in the Intermountain Region Parks:

- Telephone and Utility Lines
- Lookout Houses and Towers
- Trails (Truck, Horse, and Foot)
- Park Dwellings
- Administration/Museum Buildings
- Campgrounds with Associated Structures
- Fences
- Water Systems
- Reservoirs
- Nurseries
- Erosion Control (Dams, Bank Protection)
- Flood Control
- Bridges (Foot, Horse, and Vehicular)
- Corrals
- Roads and Related Features (Culverts, Guard Walls, Guard Rails, Diversion, Ditches and Retaining Walls)
- Picnic and Trail Shelters
- Cabins
- Equipment and Supply Houses
- Comfort Stations
- Lodges
- Water Storage Facilities
- Camp Fireplaces
- Signs, Markers, and Monuments
- Incinerators
- Drinking Fountains
- Walkways
- CCC Camp Structures
- Tree Towers
- Ranger Stations
- Stone and Adobe Walls
- Table and Bench Combinations
- Tunnels
- Retaining and Compound Walls
- Maintenance Buildings
- Landscaping
- Tree Wells

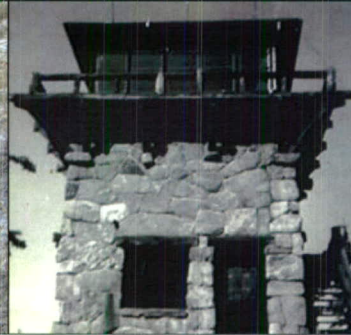
Intermountain Region CCC Resources

Intermountain Region
Arizona, Colorado, Montana, New Mexico,
Oklahoma, Texas, Utah, Wyoming

National Park Service
U.S. Department of Interior



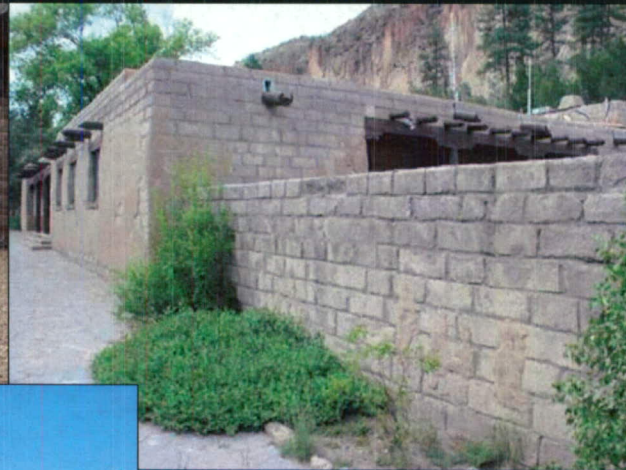
EXPERIENCE
YOUR
AMERICA



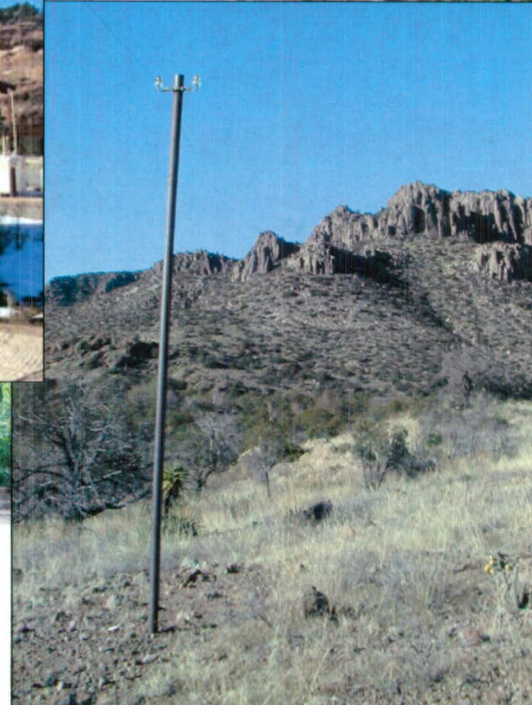
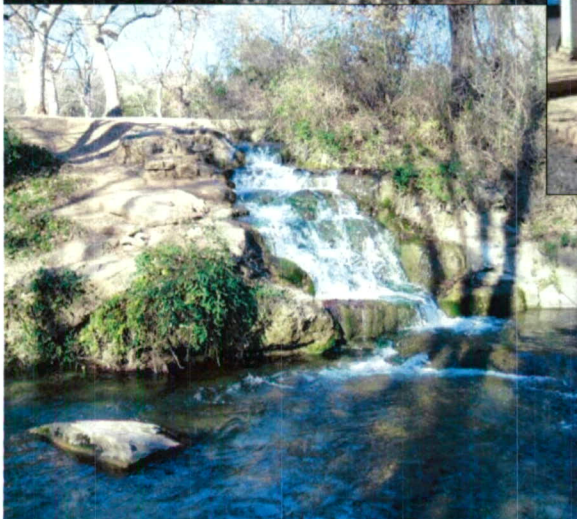
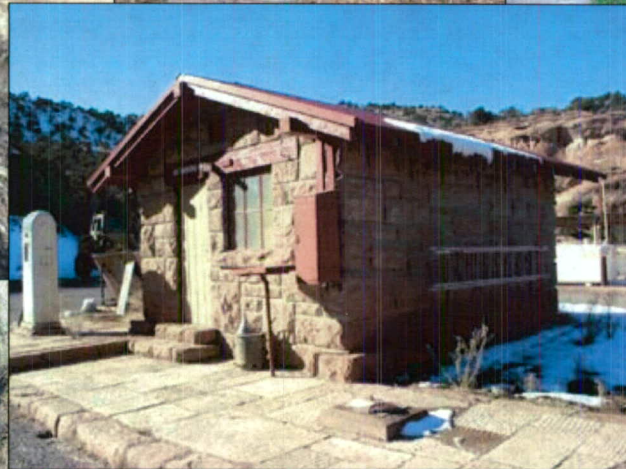
Intermountain Region CCC Resources

Intermountain Region
Arizona, Colorado, Montana, New Mexico,
Oklahoma, Texas, Utah, Wyoming

National Park Service
U.S. Department of Interior



EXPERIENCE
YOUR
AMERICA



Intermountain Region CCC Resources

Intermountain Region

Arizona, Colorado, Montana, New Mexico,
Oklahoma, Texas, Utah, Wyoming

National Park Service
U.S. Department of Interior



Intermountain Region Parks with CCC Buildings, Structures and/or Projects:

- Arches National Park
- Bandelier National Monument
- Big Bend National Park
- Black Canyon of the Gunnison NP
- Bryce National Park
- Capitol Reef National Park
- Carlsbad Caverns National Park
- Cedar Breaks National Monument
- Chaco Culture National Historical Park
- Chickasaw National Recreation Area
- Chiricahua National Monument
- Colorado National Monument
- Devils Tower National Monument
- Fort Laramie National Historic Site
- Glacier National Park
- Grand Canyon National Park
- Grand Teton National Park
- Mesa Verde National Park
- Petrified Forest National Park
- Pipe Spring National Monument



Visitor Center Bridge – Arches NP

- Old Santa Fe Trail Building
- Rocky Mountain National Park
- Tuzigoot National Monument
- Saguaro National Park
- Walnut Canyon National Monument
- Wupatki National Monument
- Yellowstone National Park
- Zion National Park

EXPERIENCE
YOUR
AMERICA

Intermountain Region CCC Resources

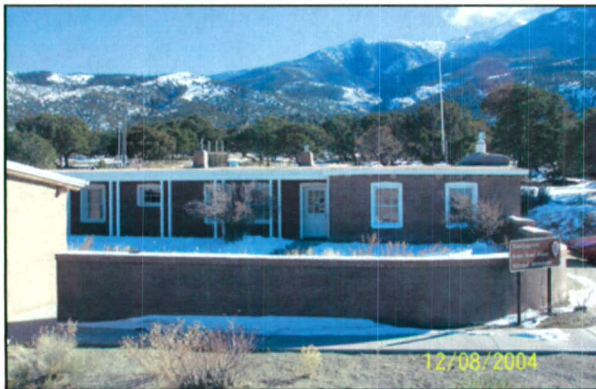
Intermountain Region
Arizona, Colorado, Montana, New Mexico,
Oklahoma, Texas, Utah, Wyoming

National Park Service
U.S. Department of Interior



Intermountain Region Parks with WPA Buildings, Structures and/or Projects:

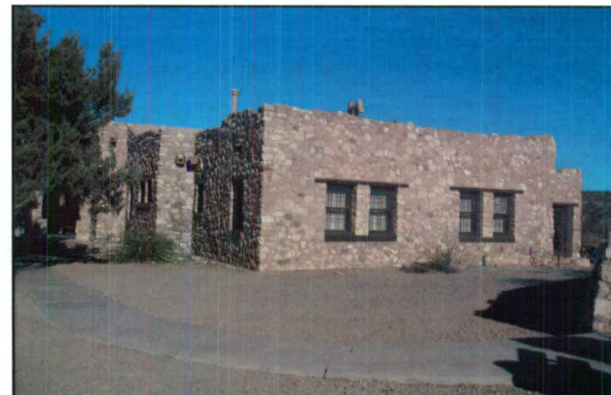
- Capulin Volcano National Monument
- Dinosaur National Monument
- Grant-Kohrs Ranch National Historic Site
- Great Sand Dunes National Park and Preserve
- Salinas Pueblo Missions National Monument
- Timpanogos Cave National Monument
- Tuzigoot National Monument
- White Sands National Monument



Superintendent's Residence – Great Sand Dunes NP&P



Visitor Center – White Sands NM



Museum and Headquarters Bldg – Tuzigoot NM

EXPERIENCE
YOUR
AMERICA

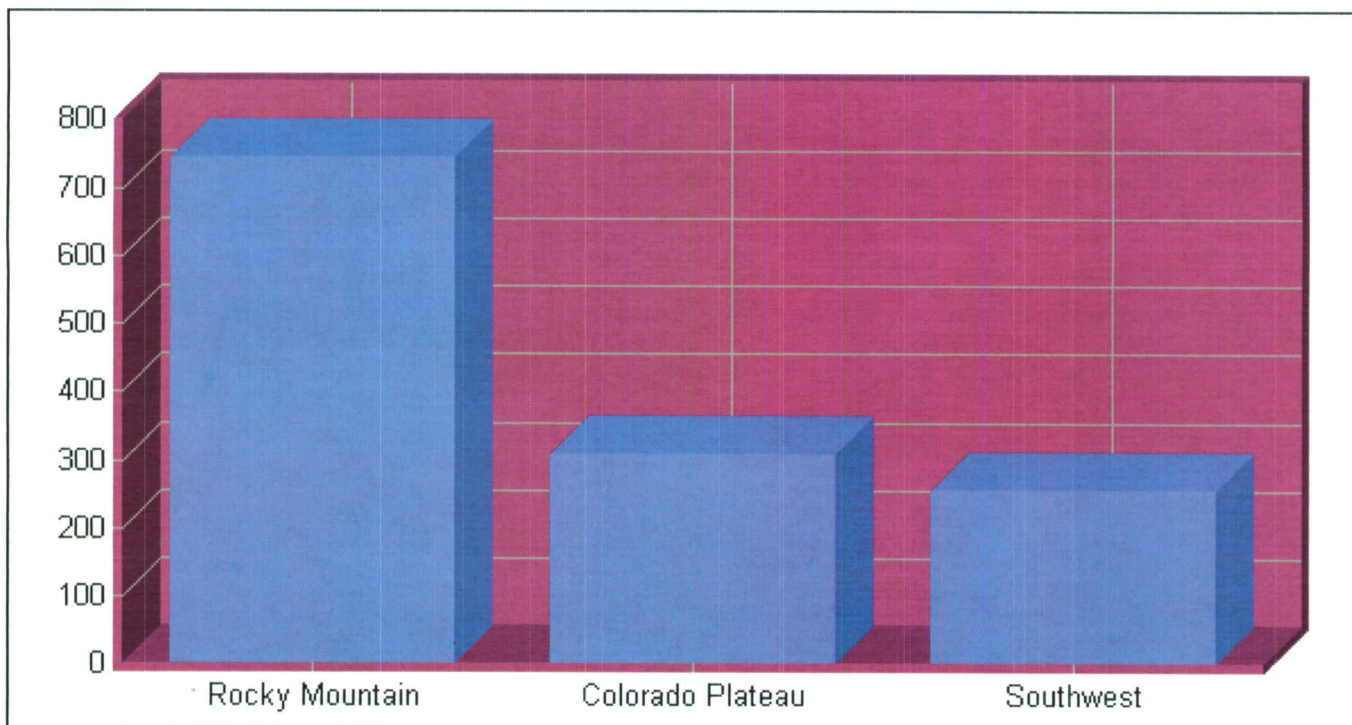
Intermountain Region CCC Resources

Intermountain Region
Arizona, Colorado, Montana, New Mexico,
Oklahoma, Texas, Utah, Wyoming

National Park Service
U.S. Department of Interior



EXPERIENCE
YOUR
AMERICA



Distribution of CCC-Period Resources by Cluster
Intermountain Region

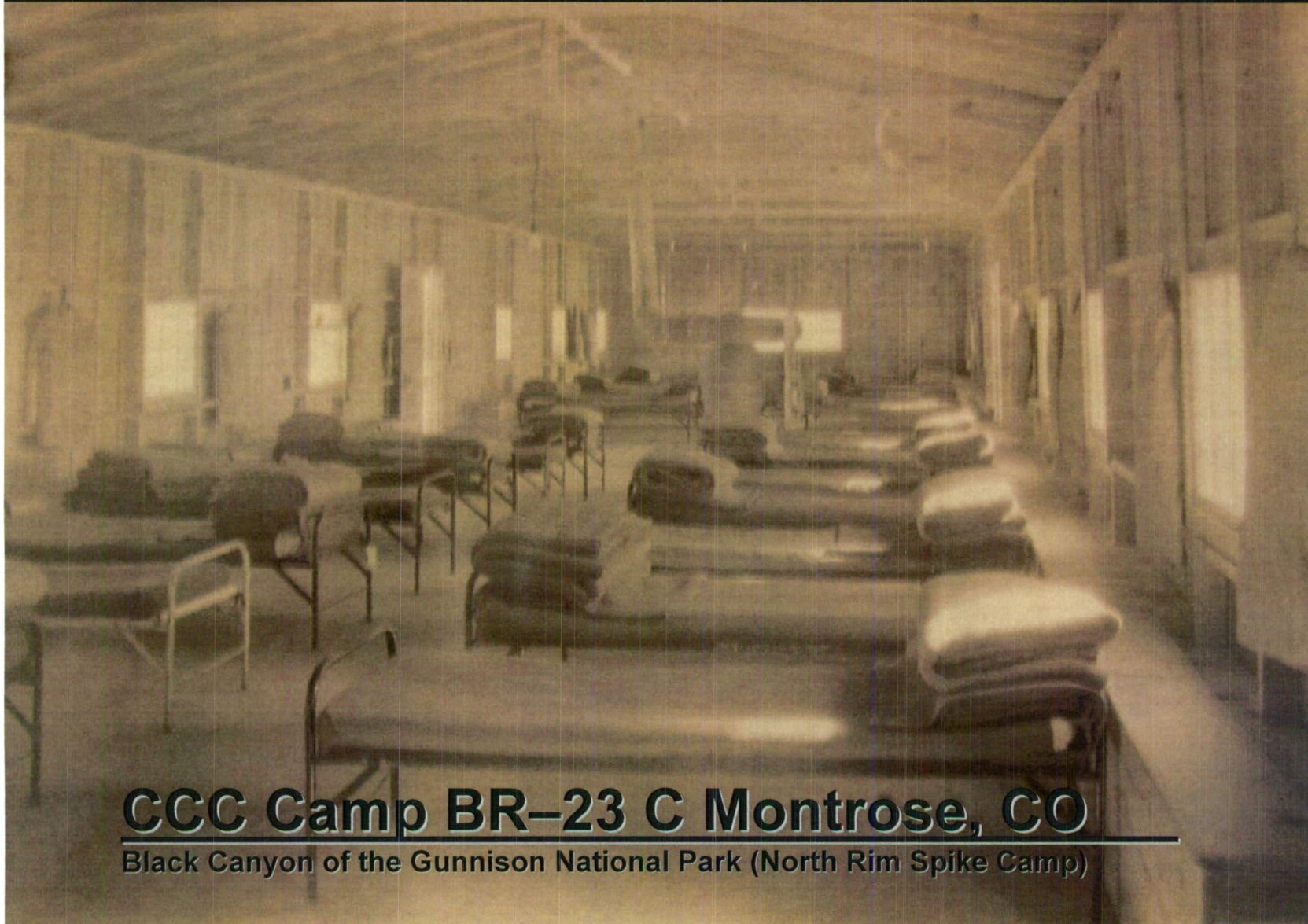
Intermountain Region CCC Resources

Intermountain Region
Arizona, Colorado, Montana, New Mexico,
Oklahoma, Texas, Utah, Wyoming

National Park Service
U.S. Department of Interior



EXPERIENCE
YOUR
AMERICA



CCC Camp BR-23 C Montrose, CO

Black Canyon of the Gunnison National Park (North Rim Spike Camp)

Intermountain Region CCC Resources

Intermountain Region
Arizona, Colorado, Montana, New Mexico,
Oklahoma, Texas, Utah, Wyoming

National Park Service
U.S. Department of Interior



EXPERIENCE
YOUR
AMERICA



CCC Camp BR-23 C Montrose, CO

Black Canyon of the Gunnison National Park (North Rim Spike Camp)

Intermountain Region CCC Resources

Intermountain Region
Arizona, Colorado, Montana, New Mexico,
Oklahoma, Texas, Utah, Wyoming

National Park Service
U.S. Department of Interior



EXPERIENCE
YOUR
AMERICA



CCC Camp BR-23 C Montrose, CO

Black Canyon of the Gunnison National Park (North Rim Spike Camp)

Intermountain Region CCC Resources

Intermountain Region
Arizona, Colorado, Montana, New Mexico,
Oklahoma, Texas, Utah, Wyoming

National Park Service
U.S. Department of Interior



EXPERIENCE
YOUR
AMERICA



CCC Camp BR-23 C Montrose, CO

Black Canyon of the Gunnison National Park (North Rim Spike Camp)

Intermountain Region CCC Resources

Intermountain Region

Arizona, Colorado, Montana, New Mexico,
Oklahoma, Texas, Utah, Wyoming

National Park Service
U.S. Department of Interior



EXPERIENCE
YOUR
AMERICA

1941 Listing of CCC Camps Located in Region Parks and/or Supervised by the NPS:

ARIZONA

Chiricahua National Monument – 1 Camp
Grand Canyon National Park – 5 Camps
Petrified Forest National Park – 2 Camps
Saguaro National Park – 1 Camp
Wupatki National Monument – 1 Camp

COLORADO

Colorado National Monument – 3 Camps
Mesa Verde National Park – 3 Camps
Rocky Mountain National Park – 6 Camps

MONTANA

Glacier National Park – 15 Camps

NEW MEXICO

Carlsbad Cavern National Park – 1 Camp
Chaco Culture National Historical Park – 1 Camp
Bandelier National Monument – 2 Camps

OKLAHOMA

Chickasaw National Recreation Area – 1 Camp

TEXAS

Big Bend National Park – 1 Camp

UTAH

Arches National Park – 1 Camp
Bryce Canyon National Park – 1 Camp
Capitol Reef National Park – 1 Camp
Cedar Breaks National Park – 1 Camp
Zion National Park – 3 Camps

WYOMING

Devils Tower National Monument – 1 Camp
Grand Teton National Park – 5 Camps
Yellowstone National Park – 10 Camps

Intermountain Region CCC Resources

Intermountain Region
Arizona, Colorado, Montana, New Mexico,
Oklahoma, Texas, Utah, Wyoming

National Park Service
U.S. Department of Interior



Other Known CCC Camps Located in the Region and/or Supervised by the NPS 1932-1940:

EXPERIENCE
YOUR
AMERICA

ARIZONA

Pipe Spring National Monument – 1 Camp

OKLAHOMA

To Date None Identified

TEXAS

To Date None Identified

COLORADO

Black Canyon of the Gunnison National Park -
Spike Camp

UTAH

To Date None Identified

MONTANA

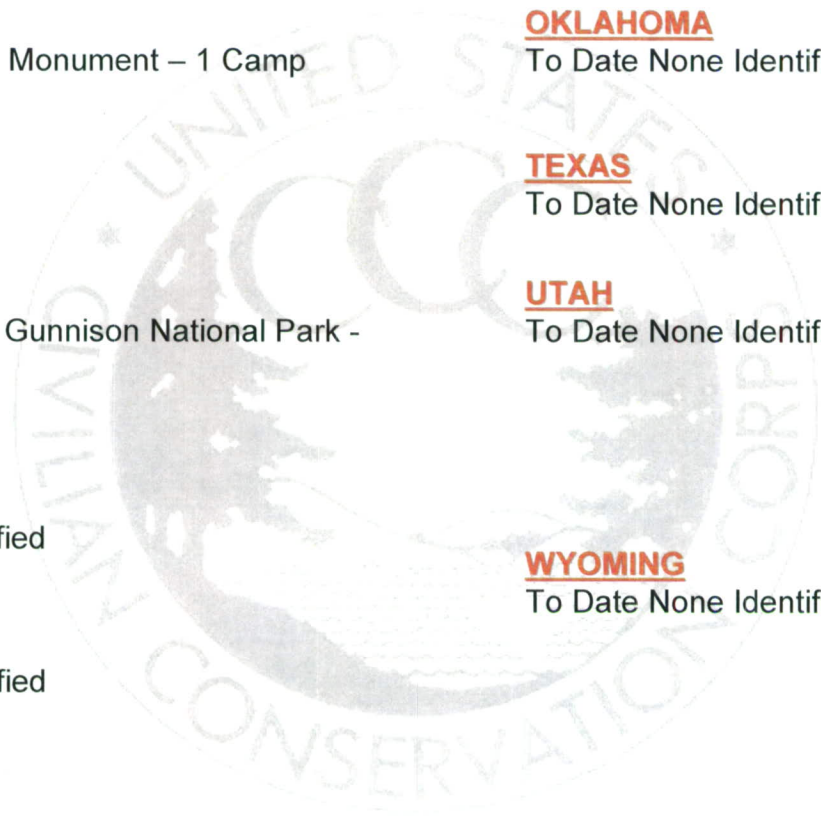
To Date None Identified

WYOMING

To Date None Identified

NEW MEXICO

To Date None Identified



Intermountain Region CCC Resources

Intermountain Region

Arizona, Colorado, Montana, New Mexico,
Oklahoma, Texas, Utah, Wyoming

National Park Service
U.S. Department of Interior



Extant CCC Camps or Support Structures Located in the Region:

EXPERIENCE
YOUR
AMERICA

ARIZONA

To Date None Identified

OKLAHOMA

To Date None Identified

COLORADO

Black Canyon of the Gunnison National Park
Mesa Verde National Park (Community Building,
Bunkhouse)

TEXAS

To Date None Identified

UTAH

To Date None Identified

MONTANA

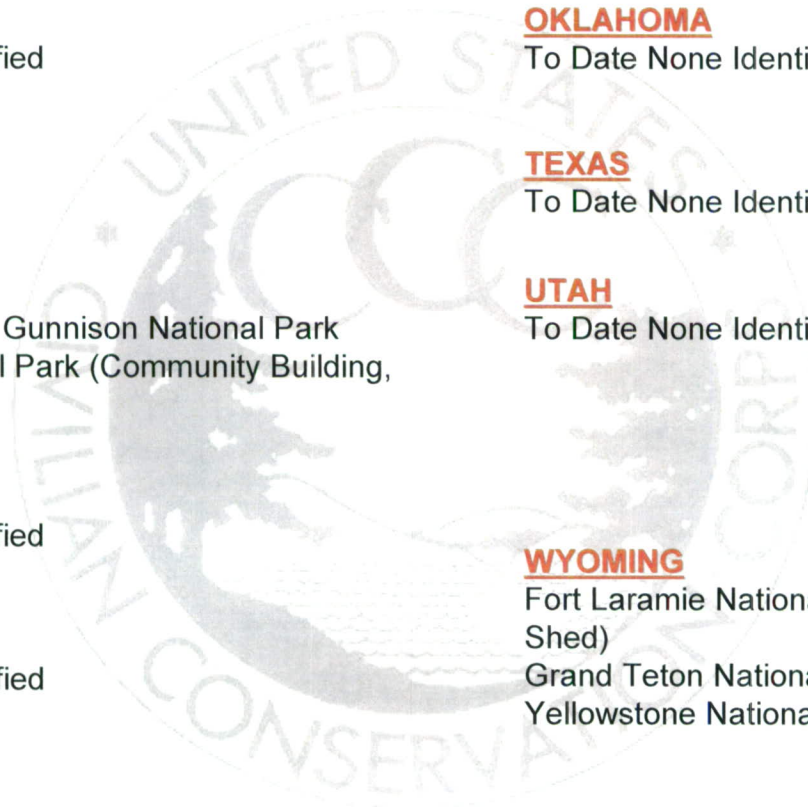
To Date None Identified

WYOMING

Fort Laramie National Historic Park (Equipment
Shed)
Grand Teton National Park (Bath House, Mess Hall)
Yellowstone National Park (Bunkhouse)

NEW MEXICO

To Date None Identified



Intermountain Region CCC Resources

Intermountain Region
Arizona, Colorado, Montana, New Mexico,
Oklahoma, Texas, Utah, Wyoming

National Park Service
U.S. Department of Interior



CCC Related National Historic Landmarks or NHL Districts in Intermountain Region Parks

- ❖ NPS Region III Headquarters NHL
Santa Fe, New Mexico
- ❖ Bandelier CCC Historic District NHL
Bandelier NM, New Mexico
- ❖ Mesa Verde Administrative District NHL
Mesa Verde NP, Colorado
- ❖ Painted Desert Inn NHL
Petrified Forest NP, Arizona
- ❖ Grand Canyon Village Historic District NHL
(Three Residences) Grand Canyon NP, Arizona
- ❖ Northeast Entrance Station NHL
Yellowstone NP, Montana



Northeast Entrance Station - Yellowstone NP



NPS Region III Headquarters – Santa Fe, NM

EXPERIENCE
YOUR
AMERICA

Intermountain Region CCC Resources

Intermountain Region
Arizona, Colorado, Montana, New Mexico,
Oklahoma, Texas, Utah, Wyoming

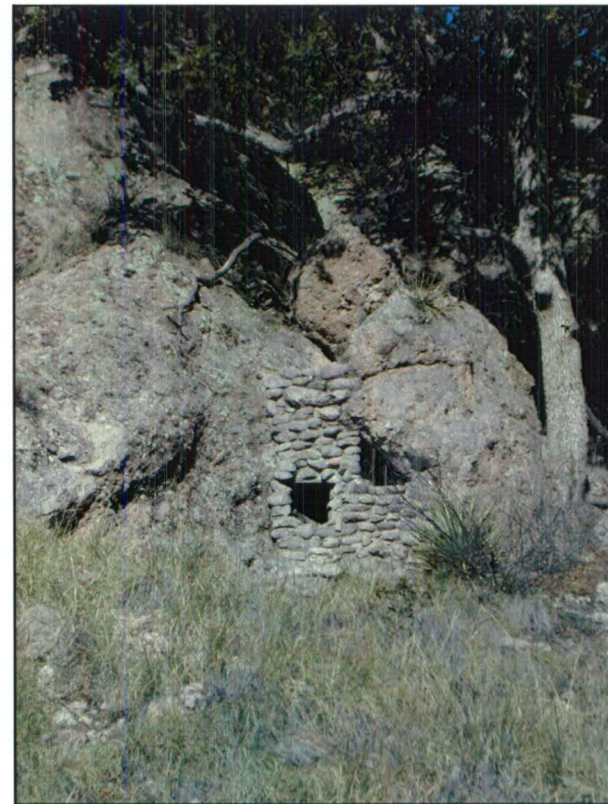
National Park Service
U.S. Department of Interior



EXPERIENCE
YOUR
AMERICA

Other CCC Related Historic Districts or NR Designations in the Intermountain Region

- ❖ CCC Structures Historic District (SHPO DOE)
Saguaro NP, Arizona
- ❖ CCC Structures Historic District (SHPO DOE)
Chiricahua NM, Arizona
- ❖ Platt Historic District (SHPO DOE)
Chickasaw NRA, Oklahoma
- ❖ North Rim Road Historic District (NR)
Black Canyon of the Gunnison NP, Colorado
- ❖ Signal Hill Fire Tower District (SHPO DOE)
Grand Canyon NP, Arizona



Bear Cage (For CCC Camp Pet Bear)
Chiricahua NM

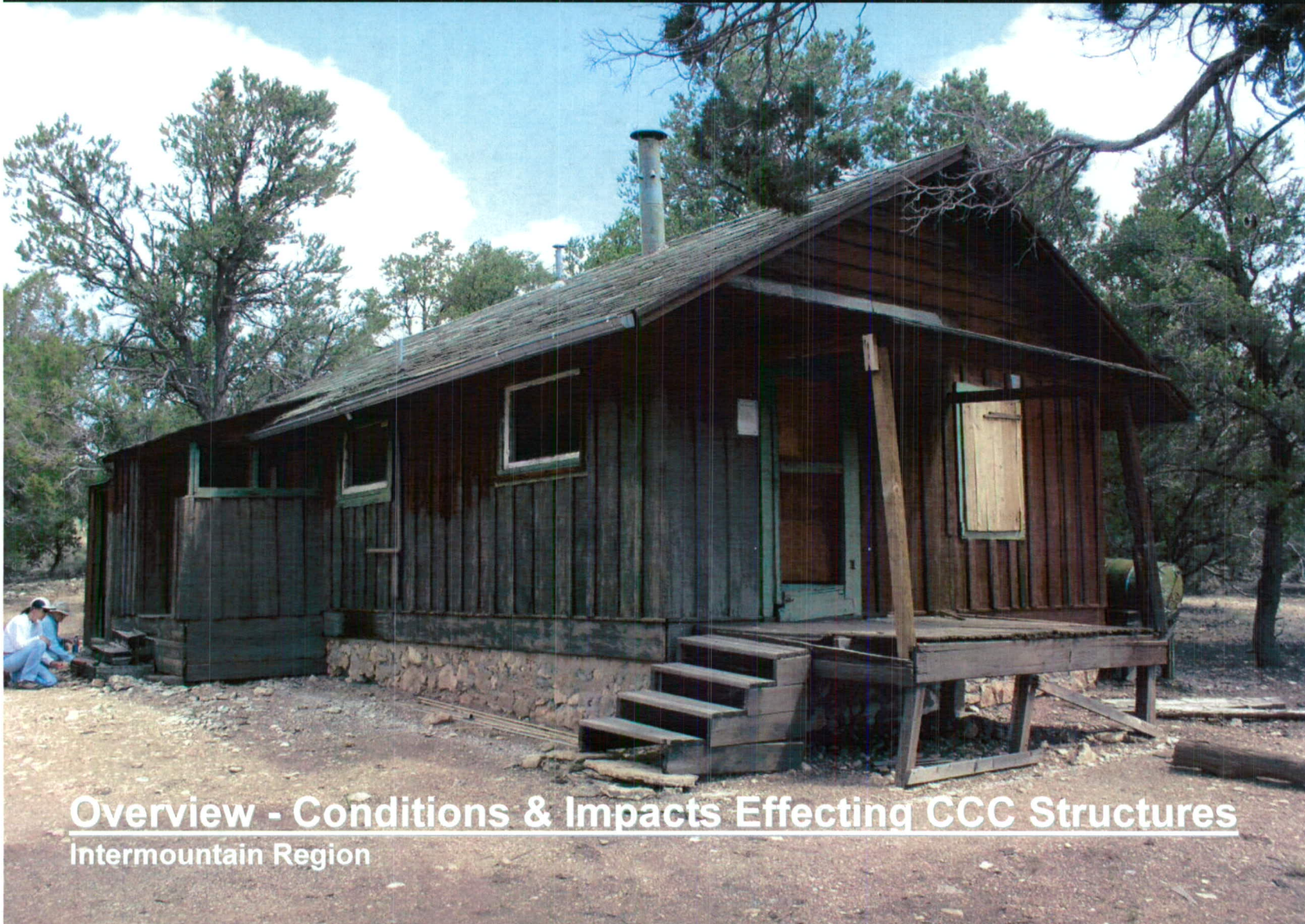
Intermountain Region CCC Resources

Intermountain Region
Arizona, Colorado, Montana, New Mexico,
Oklahoma, Texas, Utah, Wyoming

National Park Service
U.S. Department of Interior



EXPERIENCE
YOUR
AMERICA



Overview - Conditions & Impacts Effecting CCC Structures
Intermountain Region

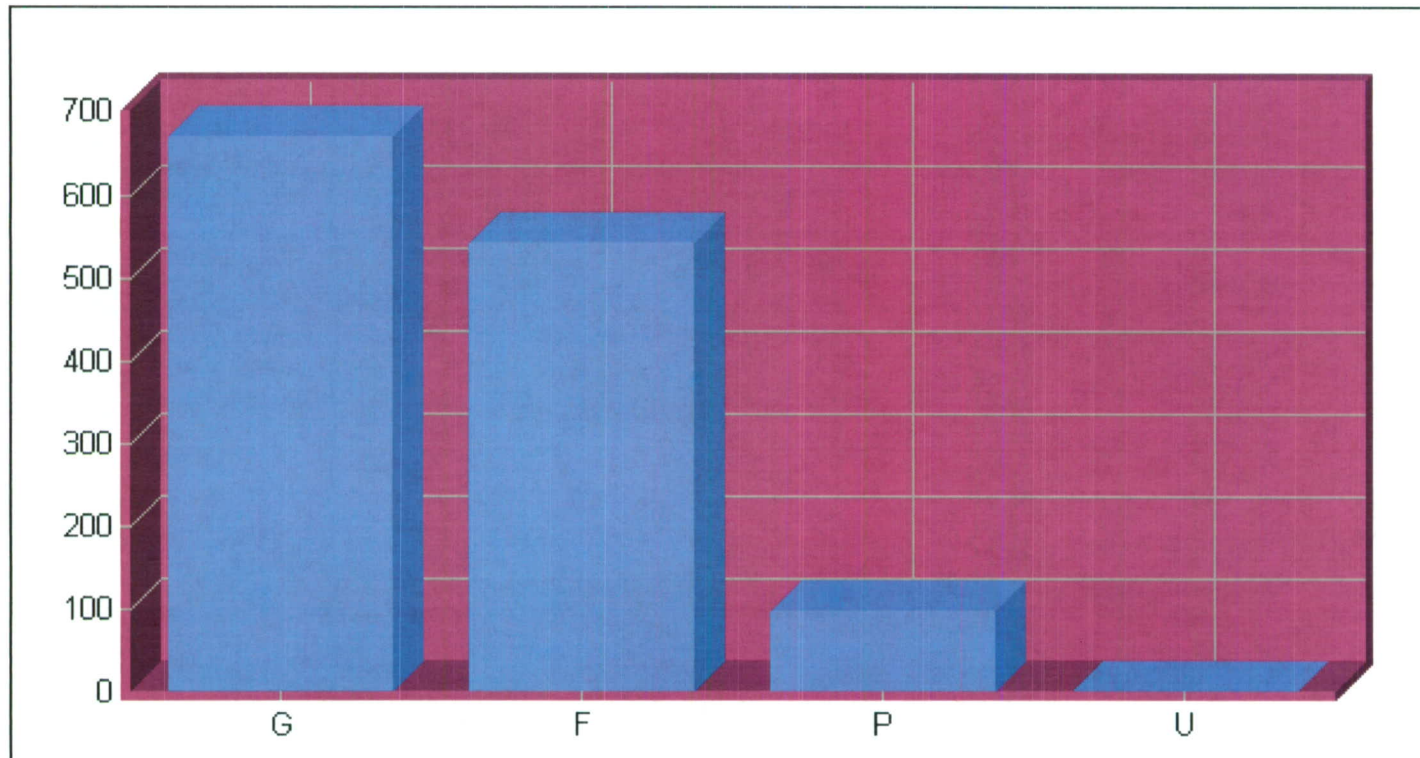
Intermountain Region CCC Resources

Intermountain Region
Arizona, Colorado, Montana, New Mexico,
Oklahoma, Texas, Utah, Wyoming

National Park Service
U.S. Department of Interior



EXPERIENCE
YOUR
AMERICA



Condition of CCC-Period Resources

Intermountain Region

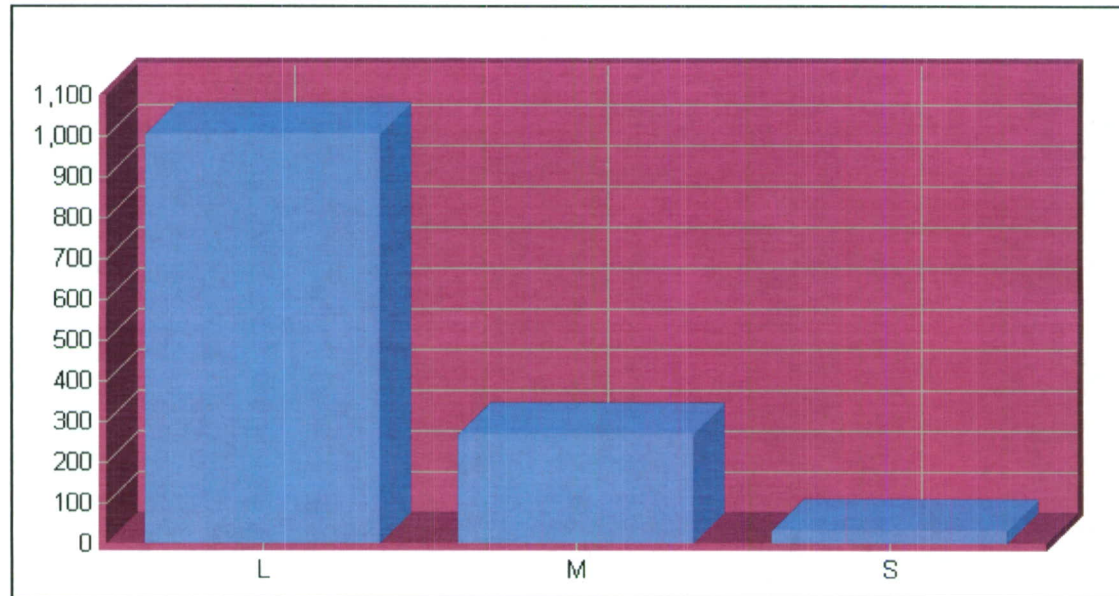
Intermountain Region CCC Resources

Intermountain Region
Arizona, Colorado, Montana, New Mexico,
Oklahoma, Texas, Utah, Wyoming

National Park Service
U.S. Department of Interior



EXPERIENCE
YOUR
AMERICA



❖ **LOW IMPACT Level:**

Known impact(s) no significant effects to structure and/or not a threat to visitors or staff.

❖ **MODERATE IMPACT Level:**

Significant damage or loss if action is not taken within 5 years and/or potentially threatening to visitors or staff.

❖ **SEVERE IMPACT Level:**

Significant damage or loss if action is not taken within 2 years and/or an immediate threat to visitor or staff safety.

Impact Levels for CCC-Period Resources

Intermountain Region

Intermountain Region CCC Resources

Intermountain Region
Arizona, Colorado, Montana, New Mexico,
Oklahoma, Texas, Utah, Wyoming

National Park Service
U.S. Department of Interior



EXPERIENCE
YOUR
AMERICA

Primary Impact Types Affecting the Region's CCC Buildings and/or Structures:

- Structural Deterioration - 25%
- Weather - 25%
- Tenants/Occupants - 24%
- Park Operations - 8%
- Visitation - 3%
- Vegetation - 2%
- Inappropriate or Inadequate Preservation, Restoration, Rehabilitation - 2%
- Inappropriate or Inadequate Maintenance Techniques - 2%
- Erosion - 2%
- Neglect - 2%
- Consumptive Use - 2%
- Animal/Pest Infestation - 1%
- Development - Less than 1%
- Biological Degradation – Less than 1%
- Inundation – Less than 1%
- Vandalism – Less than 1%
- Inappropriate Environment – Less than 1%
- Agriculture – Less than 1%



Bryce Canyon Horse Barn - Bryce Canyon NP

Intermountain Region CCC Resources

Intermountain Region
Arizona, Colorado, Montana, New Mexico,
Oklahoma, Texas, Utah, Wyoming

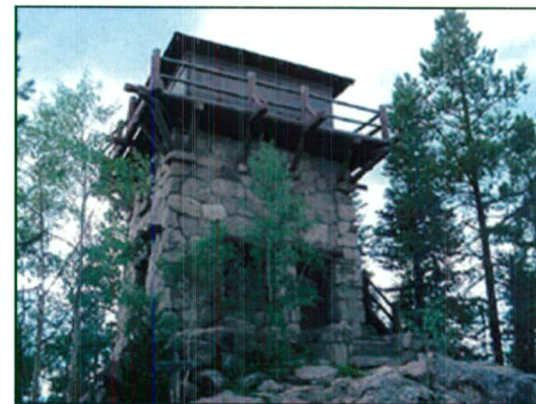
National Park Service
U.S. Department of Interior



EXPERIENCE
YOUR
AMERICA

Conclusions Regarding the Overall Good Conditions and Low Impact Levels:

- ❖ The buildings and structures are actively being used.
- ❖ The majority of the buildings and structures support park operations (maintenance facilities, roads, housing, administration, etc...)
- ❖ Compatible adaptive uses have been found for functions no longer needed (residence to offices, equipment storage to other maintenance use, etc...)



Shadow Mountain Fire Lookout – Rocky Mountain NP

FIRST FLOOR PLAN

Scale 1/8" = 1'-0"

Intermountain Region CCC Resources

Intermountain Region
Arizona, Colorado, Montana, New Mexico,
Oklahoma, Texas, Utah, Wyoming

National Park Service
U.S. Department of Interior

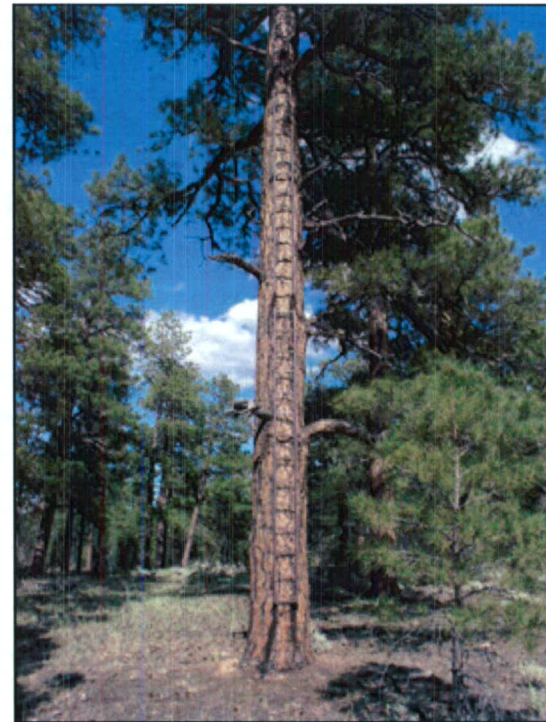


EXPERIENCE
YOUR
AMERICA

What Areas Haven't Been Adequately Addressed in Preparing for the CCC's 75th Anniversary?

Findings:

- ❖ Insufficient evaluation criteria for determinations of eligibility for CCC buildings, structures, landscapes, landscape features, furniture, preservation projects and archeological resources.
- ❖ Insufficient criteria to identify unique examples of CCC Resource Types
- ❖ Inadequate identification of CCC and “New Deal” related features within NPS resource databases.
- ❖ Minimal National Register work completed for “New Deal” related features.



South Rim Tree Tower – Grand Canyon NP

Intermountain Region CCC Resources

Intermountain Region
Arizona, Colorado, Montana, New Mexico,
Oklahoma, Texas, Utah, Wyoming

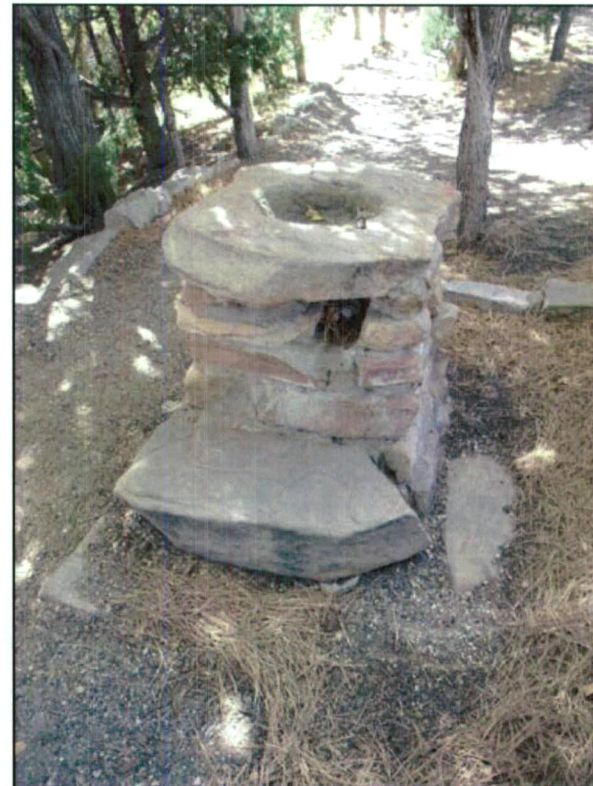
National Park Service
U.S. Department of Interior



EXPERIENCE
YOUR
AMERICA

Possible Ways to Address Areas Which Are Inadequately Addressed:

- ❖ Establish National Register Criteria for Making Significance Determinations
- ❖ Prepare a Multiple Property Nomination to Identify CCC Resource Types
- ❖ Encourage NPS Resource Managers to Evaluate and Nominate Potential CCC Resources and Districts
- ❖ Encourage NPS Database Managers and Survey Teams to Identify and Document “New Deal” Resources in the National Databases
- ❖ Have WASO Resource Managers Assemble a Team of Park, Region, and WASO Staff to Plan for 75th Anniversary



Stone Drinking Fountain - Grand Canyon NP

Intermountain Region CCC Resources

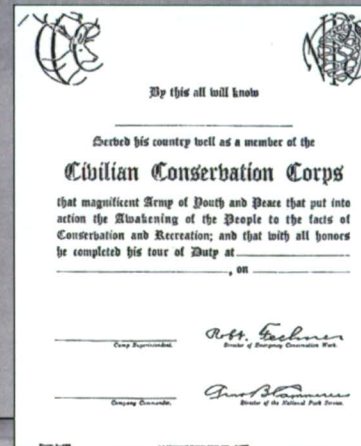
Intermountain Region
Arizona, Colorado, Montana, New Mexico,
Oklahoma, Texas, Utah, Wyoming

National Park Service
U.S. Department of Interior



The CCC a Living Legacy?

- ❖ The CCC Alumni Association Will Likely Disband Within 2 Years
- ❖ The Annual CCC Gathering at Shenandoah National Park has Dwindled From Nearly 4,000 to 7 Attendees in the Last 10 Years.
- ❖ CCC Alumni Are Now Nearing 90 Years in Age.



EXPERIENCE
YOUR
AMERICA

Intermountain Region CCC Resources

Intermountain Region
Arizona, Colorado, Montana, New Mexico,
Oklahoma, Texas, Utah, Wyoming

National Park Service
U.S. Department of Interior



EXPERIENCE
YOUR
AMERICA



Arno B. Cammerer, Director, National Park Service 1938

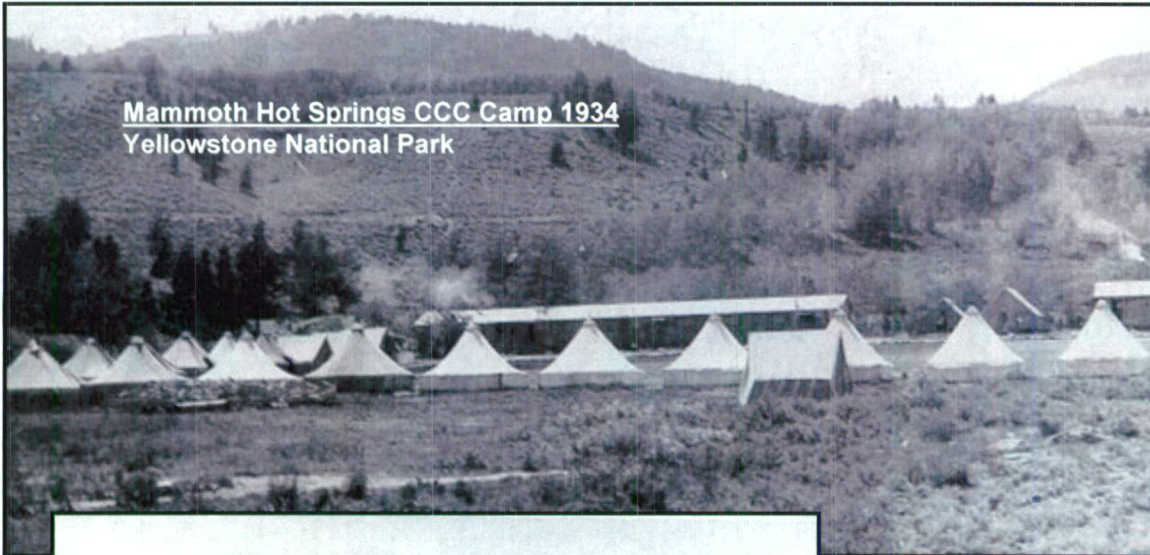
"A basic objective of those who are entrusted with the development of such areas for the human uses for which they are established is, it seems to me, to hold these modifications to a minimum and so to design them that, besides being attractive to look upon, they appear to belong to and be part of their settings."



Intermountain Region CCC Resources

Intermountain Region
Arizona, Colorado, Montana, New Mexico,
Oklahoma, Texas, Utah, Wyoming

National Park Service
U.S. Department of Interior



Mammoth Hot Springs CCC Camp 1934
Yellowstone National Park



EXPERIENCE
YOUR
AMERICA



Painted Desert Inn
Petrified Forest National Park

Sources Used:

- ❖ NPS List of Classified Structures Database
- ❖ Park and Recreation Structures, NPS, Albert Good, 1938
- ❖ The Tree Army, A Pictorial of the Civilian Conservation Corps, 1933-1942, Stan Cohen, 1980
- ❖ The Civilian Conservation Corps and the National Park Service, 1933-1942, An Administrative History, John Paige, 1985

Presentation Prepared by:

A. Sayre Hutchison, NCARB AIA
NPS, Intermountain Region Historical Architect
Last Updated: February 2, 2007