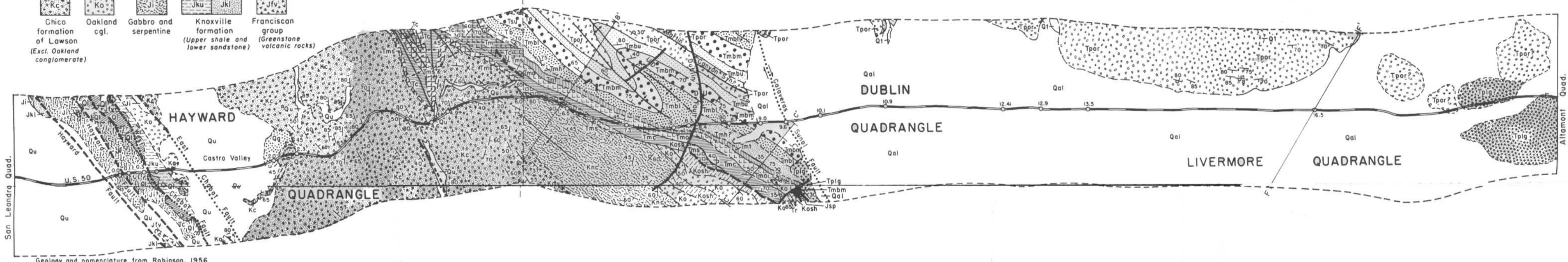
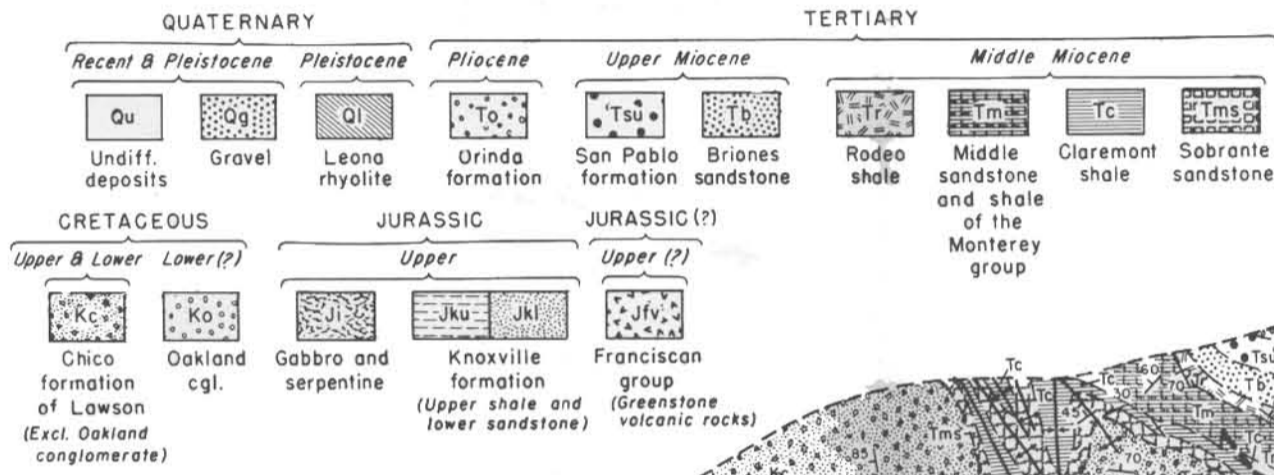
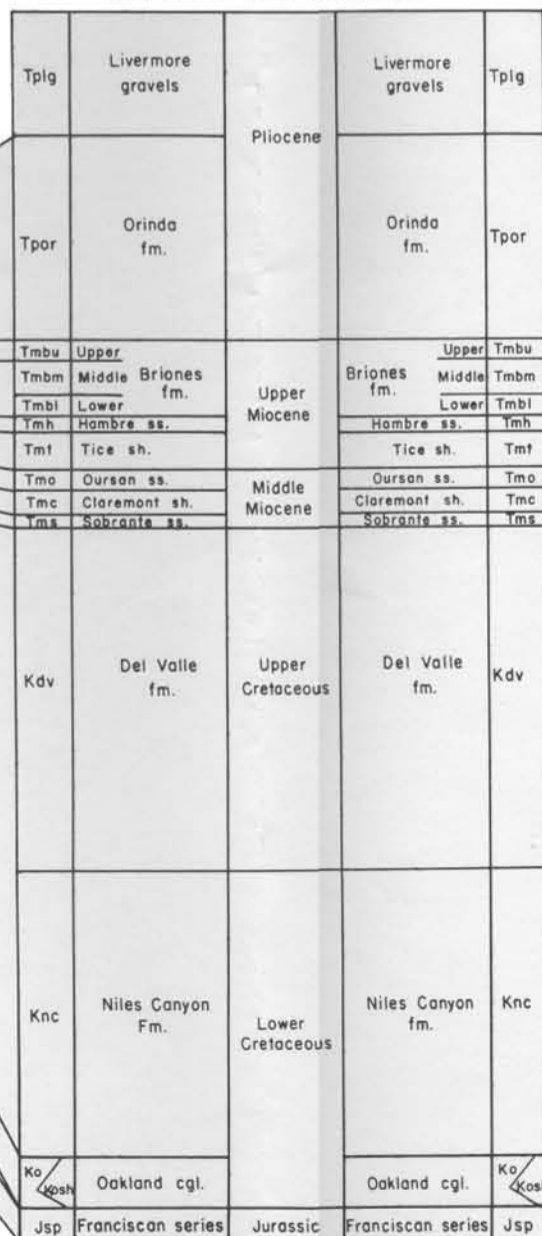


Geologic strip map along U.S. 50 in the Hayward quadrangle

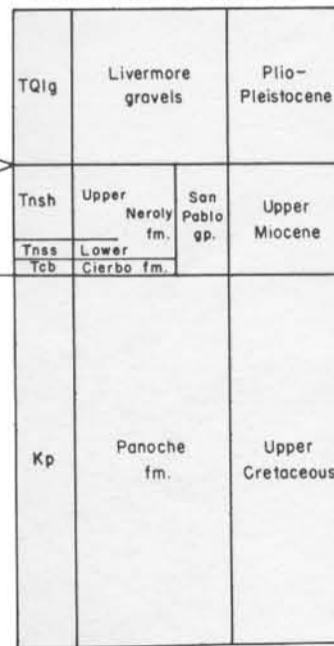


CORRELATION OF GEOLOGIC UNITS

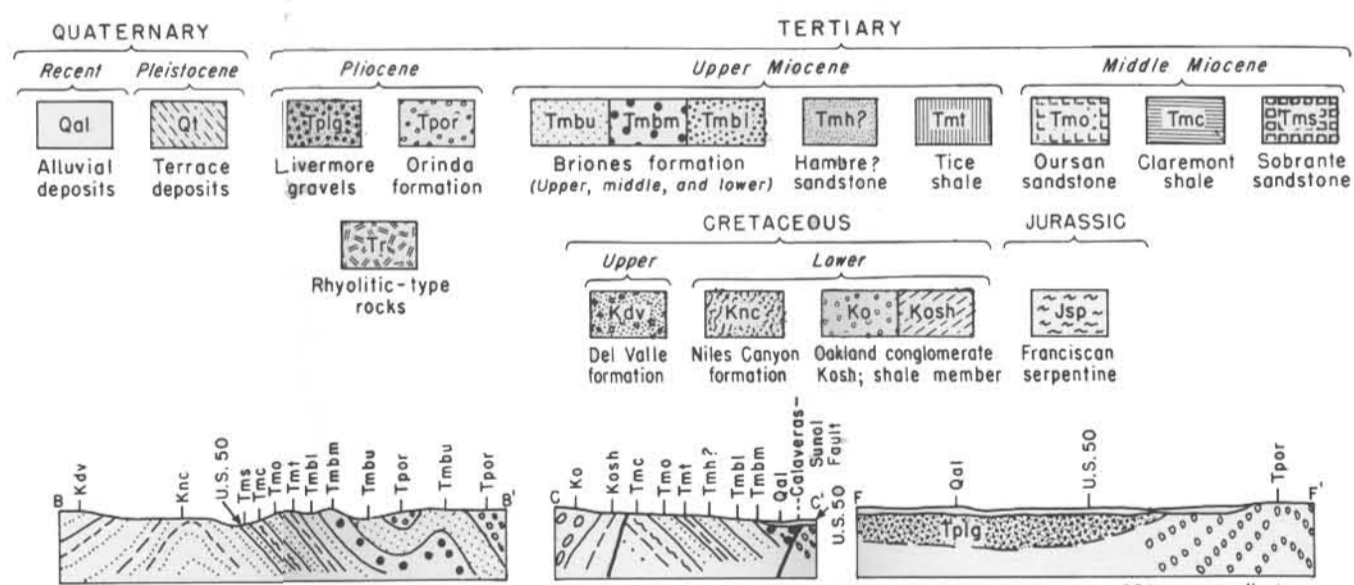
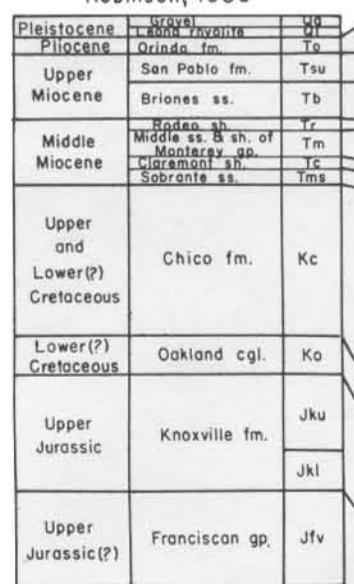
DUBLIN AND LIVERMORE QUADRANGLES
Hall (Pleasanton area), 1958



ALTAMONT AND MIDWAY QUADRANGLES
Huey (Tesla Quad.), 1948

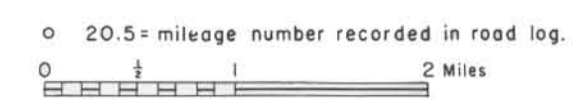


HAYWARD QUADRANGLE
Robinson, 1956



Geologic strip map along U.S. 50 in the Dublin and Livermore 7.5-minute quadrangles.

GEOLOGIC GUIDE MAPS ON
HIGHWAY 50-HAYWARD TO TRACY, CALIFORNIA



SOURCES
Hall, C.A., Jr., 1958, Geology and Paleontology of the Pleasanton area, Alameda and Contra Costa Counties, California: University of Calif. Publ. Geol. Sci., v.34, no.1, 89p.
Huey, A.S., 1948, Geology of the Tesla quadrangle, Calif: Calif. Div. of Mines, Bull. 140, 75p.
Robinson, G.D., 1956, Geology of the Hayward quadrangle, Calif: U.S. Geological Survey Geological quadrangle map G088.

