


Compendium
Listing of Special Regulations in Effect
for
Palo Alto Battlefield National Historical Park
2012

Under the provisions of Title 16, United States Code, Section 3; and Title 36, Code of Federal Regulations (CFR), Chapter 1, Parts 1 through 7, the following Superintendent's Orders (Compendium) are established for the Palo Alto Battlefield National Historic Site (hereinafter "park"). These orders supplement the provisions contained in Parts 1 through 7 of 36 CFR where the park Superintendent has the authority to establish supplemental regulations.

As required in 36 CFR 1.7 (b), this Compendium includes in writing all the designations, closures, permit requirements and other restrictions imposed under the discretionary authority of the Office of the Superintendent of Palo Alto Battlefield National Historic Site.

Signed: 
Mark E. Spier, Superintendent

Date: 2/1/2012

Table of Contents

SECTION 1.5:	CLOSURES AND PUBLIC USE LIMITS
SECTION 1.6:	PERMITS
SECTION 2.1:	PRESERVATION OF NATURAL, CULTURAL AND ARCHEOLOGICAL RESOURCES
SECTION 2.2:	WILDLIFE PROTECTION
SECTION 2.10:	CAMPING
SECTION 2.13:	FIRES
SECTION 2.15:	PETS
SECTION 2.16:	HORSE AND PACK ANIMALS
SECTION 2.21	SMOKING
SECTION 2.35:	ALCOHOLIC BEVERAGES AND CONTROLLED SUBSTANCES
SECTION 2.51	PUBLIC ASSEMBLIES, MEETINGS
SECTION 2.52	SALE OR DISTRIBUTION OF PRINTED MATTER
SECTION 3.16	BOATING AND WATER USE ACTIVITIES
SECTION 4.30	BICYCLES

Maps

SECTION 1.5, CLOSURE AND PUBLIC USE LIMITS

(a)(1) Closures

The Palo Alto unit is open to public use daily from 8 a.m. to 5 p.m. The Resaca de la Palma unit is open only during scheduled park events or programs. The Superintendent may issue a permit to enter or remain in the park during closed hours for scientific research or special events.

The park is closed during the following days:

- January 1st, New Years Day
- The last Thursday in November, Thanksgiving Day
- December 25th, Christmas Day

Entering or remaining within the park when it is closed to the public is prohibited.

Due to the sensitive archeological sites and dangerous natural and man-made hazards at the Palo Alto unit, public use shall be confined to buildings open to the public, roads and trails, unless accompanied by a National Park Service employee. Park lands on this unit are closed to pedestrians and hikers twenty feet beyond roads and trails.

Public use at Resaca de la Palma is permitted throughout the unit when open to the public.

(a)(2) Use Limits

The use of two-wheeled, gyroscopically stabilized, battery-powered personal transportation devices (i.e. Segway or similar devices) within Palo Alto Battlefield NHP by mobility impaired visitors is limited to the paved trails within the park. The speed of such devices shall not exceed the pace of a brisk walk.

SECTION 1.6, PERMITS

Pursuant to 36 CFR 1.6(f), the following is a list of activities and applicable 36 CFR statutes for which a permit is required. Permits are issued by the Superintendent and may be subject to special requirements. Engaging in these activities without a permit, or violating the terms and conditions of a permit is prohibited

Research Specimen Collection	2.5 (a)
Special Event	2.50 (a)
Public Assembly	2.51 (a)
Sale/distribution of Printed Material	2.52 (a)
Post or distribute commercial notices or advertisements	5.1

Commercial Use	5.3
Commercial Photography	5.5

In all cases, the permit or letter of authorization must be in the permittee's possession at all times and must be exhibited to any authorized person upon request.

SECTION 2.1, PRESERVATION OF NATURAL, CULTURAL AND ARCHEOLOGICAL RESOURCES

(b) Hiking and Pedestrian Use: Due to the sensitive archeological sites and dangerous natural and man-made hazards within the Palo Alto unit, public use shall be confined to buildings open to the public, roads and trails, unless accompanied by a National Park Service employee.

Leaving a road or trail beyond a distance of twenty feet is prohibited.

(c) (1) Collection of Fruits, Berries, Nuts: The collection of fruits, berries, and nuts is prohibited.

SECTION 2.2: WILDLIFE PROTECTION

(e) Viewing Wildlife:

All areas of the park are closed to the viewing of wildlife with an artificial light.

Artificial light is defined as a flashlight, hand-held spotlight, headlights, exterior vehicle lights or other light, which is emitted from a non-natural source. This also includes any infrared or similar light used in connection with a scope or electronic viewing device.

SECTION 2.10, CAMPING AND FOOD STORAGE

(a) Camping is prohibited at any time within the park.

The Living History demonstration area can be opened to overnight camping subject to conditions of a permit issued by the Superintendent.

SECTION 2.13, FIRES

(a)(1) Fires: Lighting and or maintaining a fire is prohibited within the park.

Fires can be maintained in the Living History demonstration subject to conditions of a permit issued by the Superintendent

SECTION 2.15, PETS

(a) (1), Possession of Pets: Pets are allowed on parking areas, pedestrian trails and roadways. All pets must be on a leash no greater than six feet in length. Pets are prohibited in all other areas of the park. Service animals are allowed in any area open to the public, accompanied by a handler.

(a) (5), Pet Excrement: Pet owners and handlers are responsible for removing any solid waste excrement from pets that are within the park. Pet excrement must be deposited into a solid waste container at the park or removed from the park.

Failing to comply with the pet excrement conditions listed above is prohibited.

SECTION 2.16, HORSES AND PACK ANIMALS

(g) Use of Horses and Pack Animals:

Use of horses and pack animals is prohibited within the park.

Horses may be used in conjunction with Living History demonstrations subject to conditions of a permit issued by the Superintendent

SECTION 2.21, SMOKING

(a) Smoking: Smoking is prohibited within all government buildings and government vehicles and at outdoor programs within the park. The Superintendent may temporarily close the entire park to smoking during periods of high fire danger.

Violation of the Superintendent's orders regarding smoking regulations is prohibited.

SECTION 2.35, ALOCOHOLIC BEVERAGES AND CONTROLLED SUBSTANCES

(a)(3)(i) Alcoholic Beverages:

The park is closed to the possession and consumption of alcoholic beverages.

The Living History demonstration areas can be opened to the possession and consumption of alcohol subject to conditions of a permit issued by the Superintendent.

SECTION 2.51, PUBLIC ASSEMBLIES AND MEETINGS

(e) Permit for Public Assemblies and Meetings;

The following are designated public meeting or assembly areas. Detailed maps of specific areas will be furnished upon request. See Appendix A

The west parking area near the Visitor Center at the Palo Alto unit.

The open grass area contained within the perimeter of the walking trail at the Resaca de la Palma unit.

Engaging in a public meeting or assembly without a permit or violation of any terms or conditions of a valid permit is prohibited.

SECTION 2.52, SALE OR DISTRIBUTION OF PRINTED MATERIAL

(e) Permit for Sale or Distribution of Printed Material:

The following areas are designated as acceptable for the sale or distribution of printed matter. Sale or distribution areas may not interfere with foot traffic or block any public entrance. Detailed maps of specific areas will be furnished upon request. See Appendix B.

The southern end of the sidewalk bordering the parking lot in front of the Visitor Center.

The area approximately 100 feet west, southwest of the pavilion shelter at the Resaca de la Palma unit.

A map of the area(s) approved for the sale or distribution of printed matter is maintained in the Office of the Superintendent. A copy of the map, along with instructions showing which area(s) are permitted for the sale or distribution of printed matter, shall be attached to each permit.

Engaging in the sale or distribution of printed matter without a valid permit or violating the terms or conditions of a valid permit is prohibited.

SECTION 3.16, BOATING AND WATER USE ACTIVITIES

Swimming or wading in the waters of Resaca de la Palma is prohibited.

SECTION 4.30, BICYCLES

Section 4.30, Bicycles: The use of bicycles is prohibited except on park roads, in parking areas and that portion of the Brownsville Historic Hike Bike trail within the park. There are no other routes designated for bicycle use.

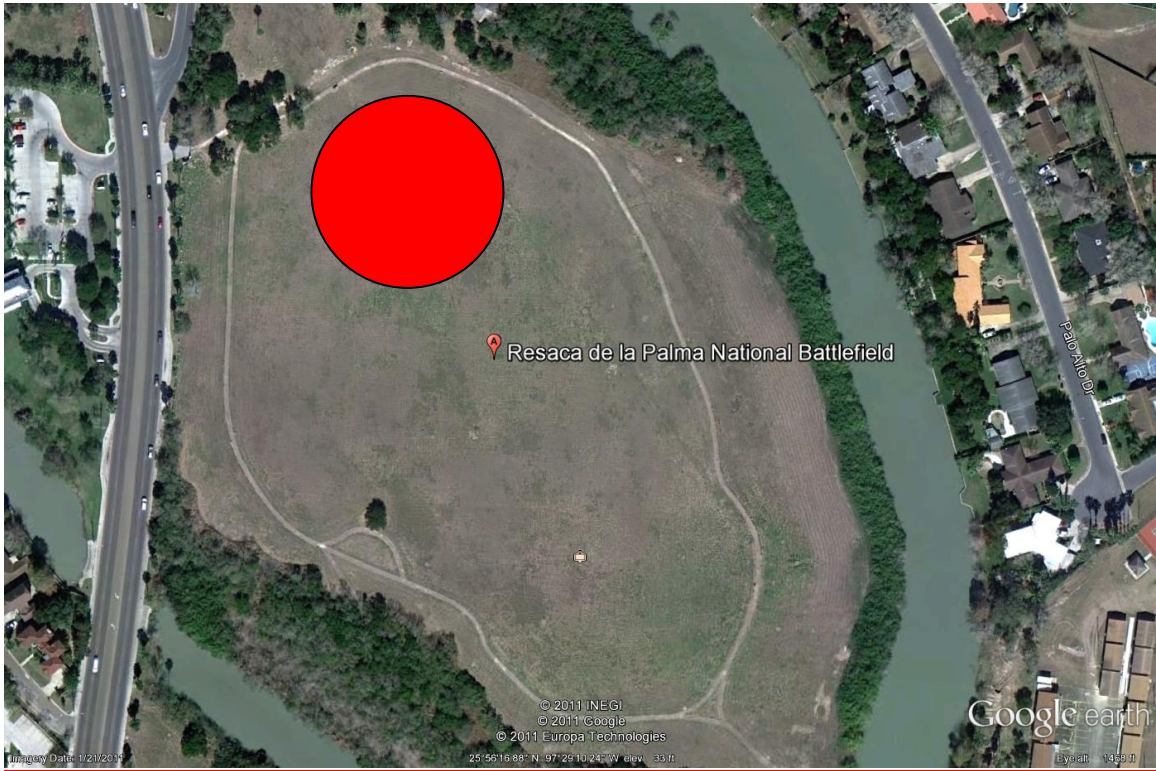
In accordance with Section 4.2(a) adopting Texas Transportation Code Sections 541.201(8) and 551.003, all regulations applicable to bicycles apply to low speed electric vehicles

APPENDIX A
Public Assembly Area

Palo Alto Unit



Resaca de la Palma Unit



APPENDIX B
Sale and Distribution of Printed Matter

Palo Alto Unit



Resaca de la Palma Unit

