

Table D-1. Summary statistics for monthly average temperature at Acuña Site weather station, 1995-2005, Organ Pipe Cactus N.M. Average annual temperature is 22.95 °C.

	Jan	Feb	Mar	Apr	May	Jun	Jul	Aug	Sep	Oct	Nov	Dec
Mean	14.11	14.54	18.27	21.13	27.16	30.70	32.76	31.91	29.95	23.82	17.75	13.32
S.D.	1.52	1.63	1.89	1.70	1.36	1.00	0.72	0.64	1.00	1.61	2.35	1.20
Skew	0.50	0.08	1.34	-0.19	0.17	0.56	-1.23	0.82	-0.89	0.36	-0.68	0.02
Max	17.13	16.61	21.89	23.51	29.08	32.48	33.58	32.98	31.14	26.49	20.63	14.90
Min	11.62	12.46	16.41	18.20	25.32	29.39	31.16	31.26	27.79	21.82	13.99	11.53
Years	10	10	9	9	9	10	10	10	11	10	10	11

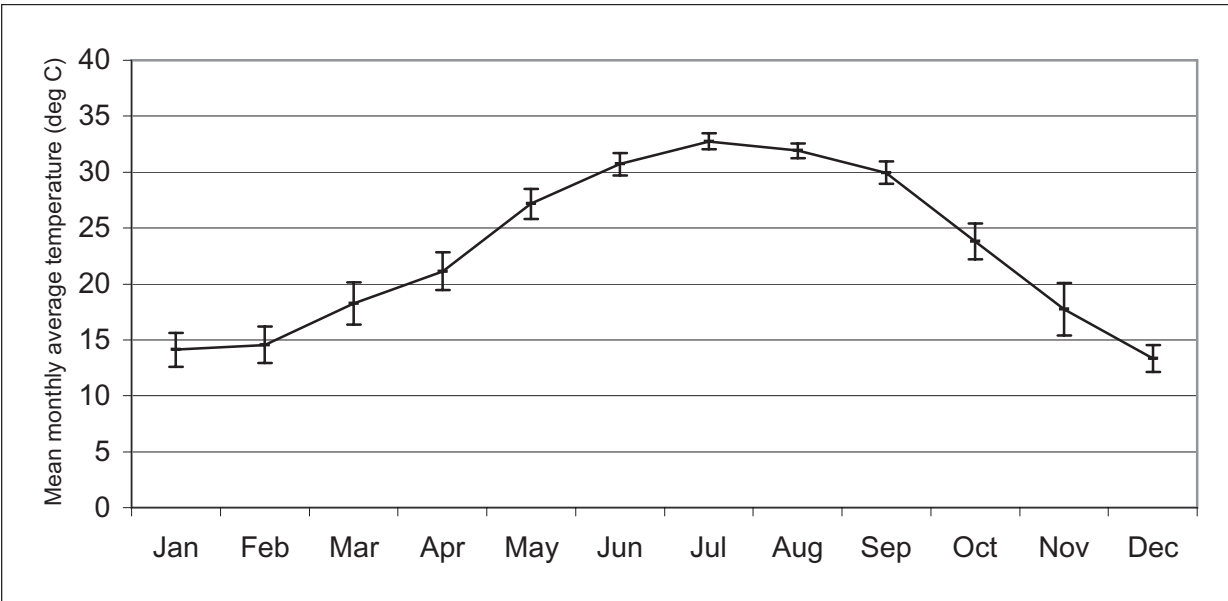


Figure D-1a. Mean monthly average temperatures at Acuña Site weather station, 1995-2005.

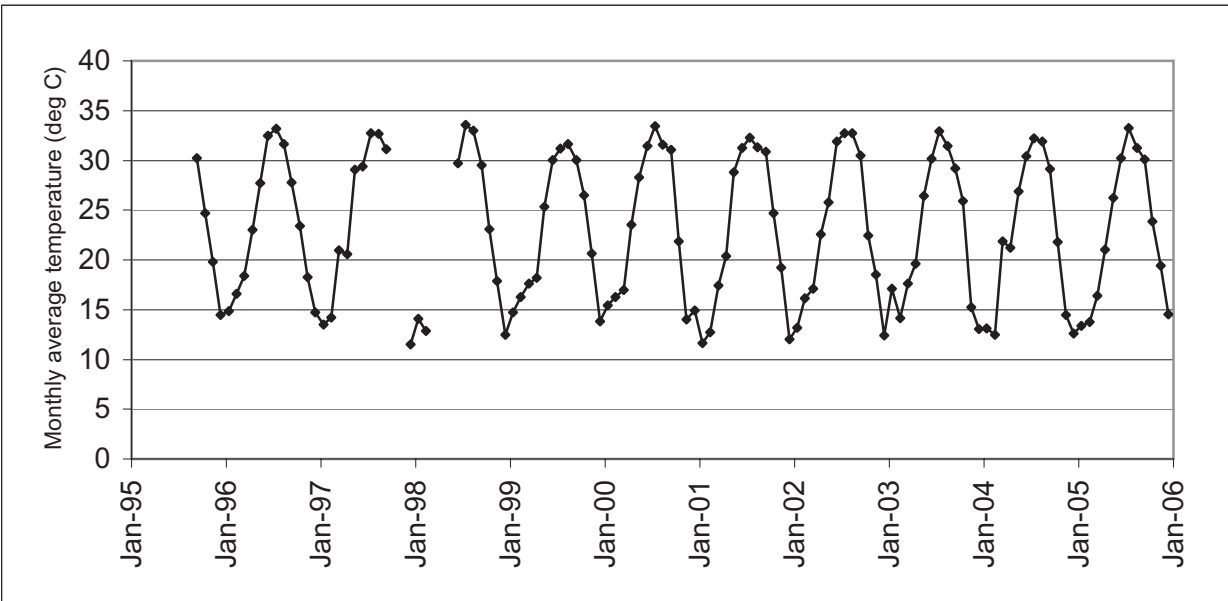


Figure D-1b. Monthly average temperatures at Acuña Site weather station, 1995-2005.

Table D-2. Summary statistics for monthly average temperature at Aguajita Wash weather station, 1995-2005, Organ Pipe Cactus N.M. Average annual temperature is 21.36 °C.

	Jan	Feb	Mar	Apr	May	Jun	Jul	Aug	Sep	Oct	Nov	Dec
Mean	12.30	12.81	17.03	19.38	24.92	28.31	32.37	32.04	28.74	21.82	15.49	11.07
S.D.	1.29	1.64	2.04	1.46	1.79	1.22	0.52	0.97	1.15	1.21	1.58	0.95
Skew	0.44	1.05	0.44	0.55	-1.03	1.48	-0.48	-0.58	0.06	0.96	-0.44	0.30
Max	14.16	15.68	19.86	21.75	27.14	30.33	32.94	32.85	30.25	24.17	17.69	12.35
Min	10.78	11.07	14.72	17.52	21.75	27.24	31.63	30.84	27.02	20.45	13.17	9.97
Years	5	6	6	6	6	5	5	4	8	8	8	7

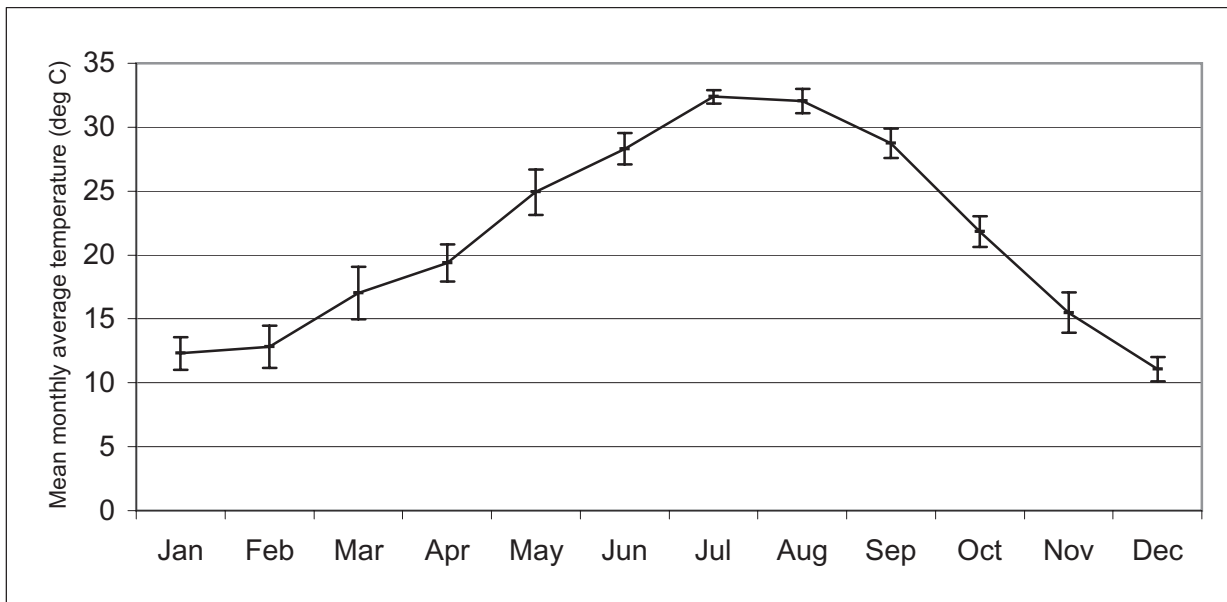


Figure D-2a. Mean monthly average temperatures at Aguajita Wash weather station, 1995-2005.

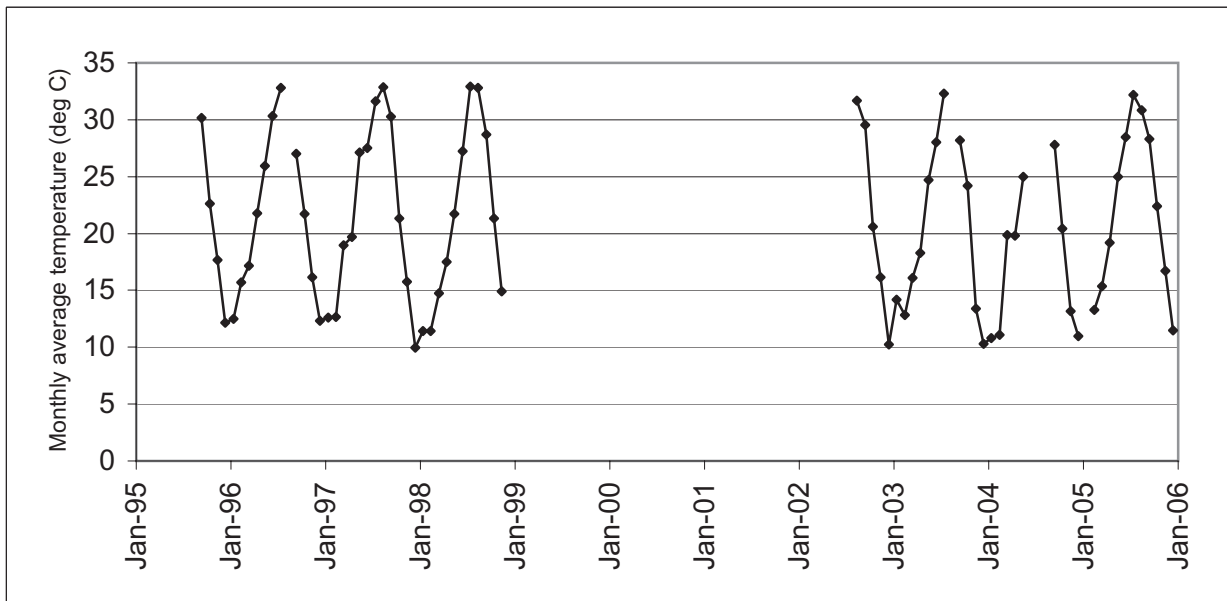


Figure D-2b. Monthly average temperatures at Aguajita Wash weather station, 1995-2005.

Table D-3. Summary statistics for monthly average temperature at Alamo Canyon weather station (in canyon), 1996-2005, Organ Pipe Cactus N.M. Average annual temperature is 21.98 °C.

	Jan	Feb	Mar	Apr	May	Jun	Jul	Aug	Sep	Oct	Nov	Dec
Mean	13.49	13.57	17.29	19.98	25.97	29.77	31.76	30.59	28.76	22.86	16.98	12.72
S.D.	1.79	1.90	2.12	1.91	1.94	1.27	0.96	0.81	1.08	1.77	2.41	1.42
Skew	0.96	0.06	1.07	-0.10	-0.89	-0.16	-1.25	0.66	-1.15	0.55	-0.60	-0.34
Max	17.10	16.05	21.25	22.63	28.16	31.78	32.72	32.22	30.35	25.71	20.28	14.66
Min	11.03	10.69	14.62	17.08	22.02	27.75	29.72	29.51	26.26	20.76	12.94	10.03
Years	9	9	9	10	9	9	9	9	10	9	10	10

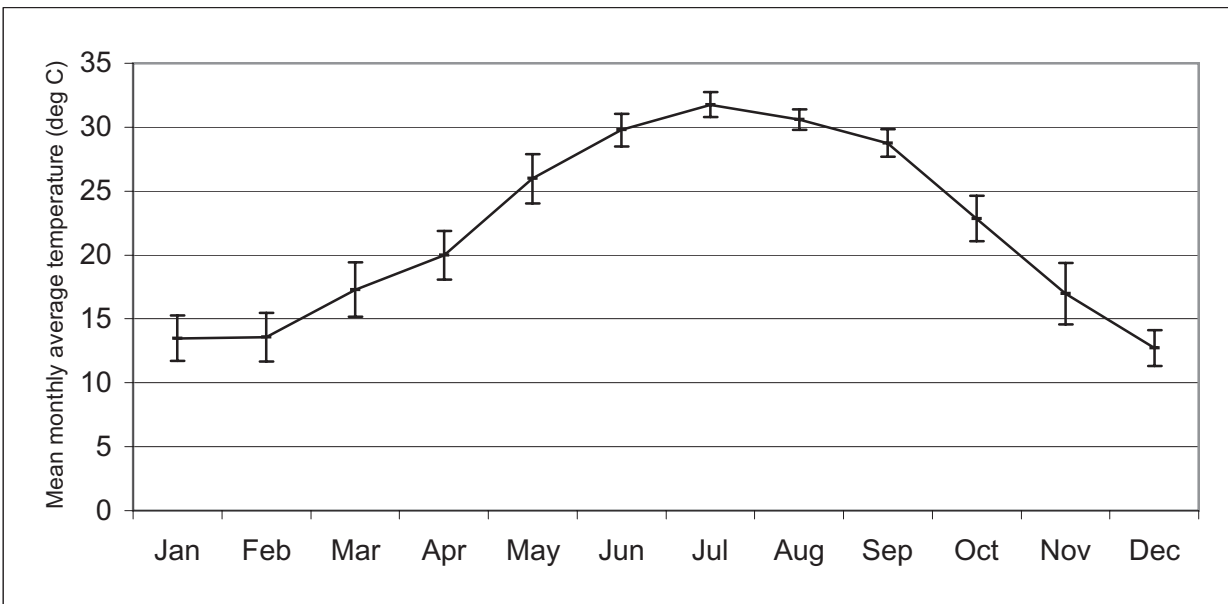


Figure D-3a. Mean monthly average temperatures at Alamo Canyon weather station (in canyon), 1996-

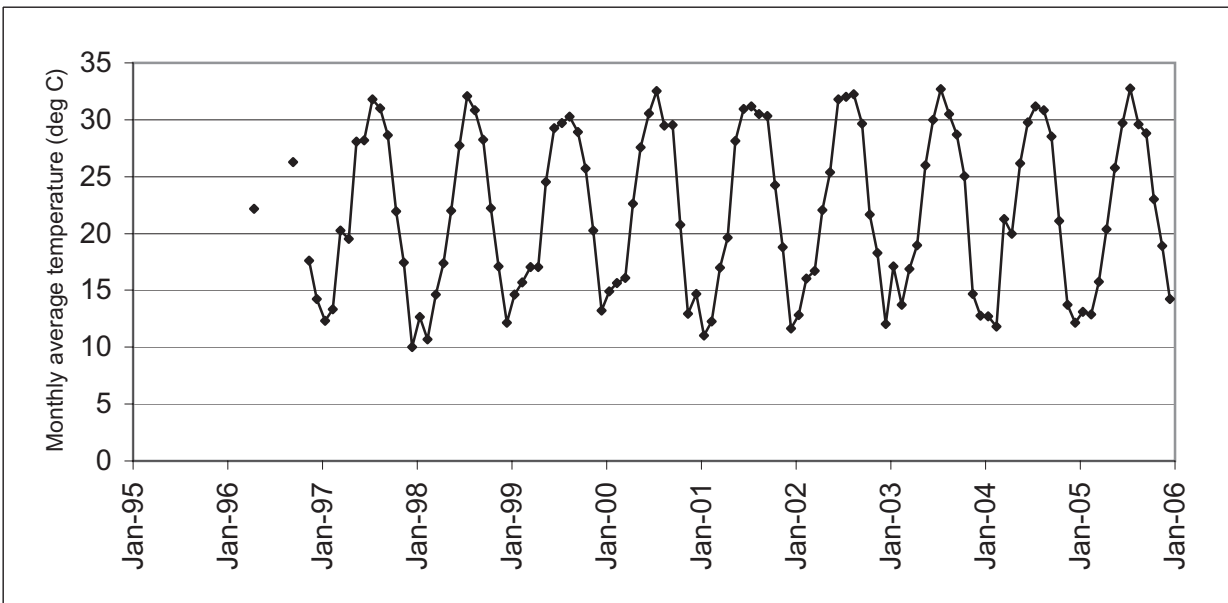


Figure D-3b. Monthly average temperatures at Alamo Canyon weather station (in canyon), 1996-2005.

Table D-4. Summary statistics for monthly average temperature at East Armenta weather station, 1995-2005, Organ Pipe Cactus N.M. Average annual temperature is 21.45 °C.

	Jan	Feb	Mar	Apr	May	Jun	Jul	Aug	Sep	Oct	Nov	Dec
Mean	11.71	12.58	16.65	19.32	25.57	29.59	32.03	31.41	29.08	22.54	16.17	10.80
S.D.	1.35	1.52	1.88	1.54	2.04	1.22	0.75	0.63	1.18	1.38	1.80	0.96
Skew	0.87	0.51	0.94	0.20	-0.34	0.15	-0.76	0.34	-0.82	0.10	-0.97	0.36
Max	14.64	15.32	20.34	21.76	28.08	31.24	32.92	32.20	30.50	24.52	17.88	12.28
Min	9.99	10.70	14.13	17.05	22.30	28.04	30.56	30.66	26.66	20.51	12.82	9.32
Years	10	10	10	11	11	11	11	10	10	10	11	11

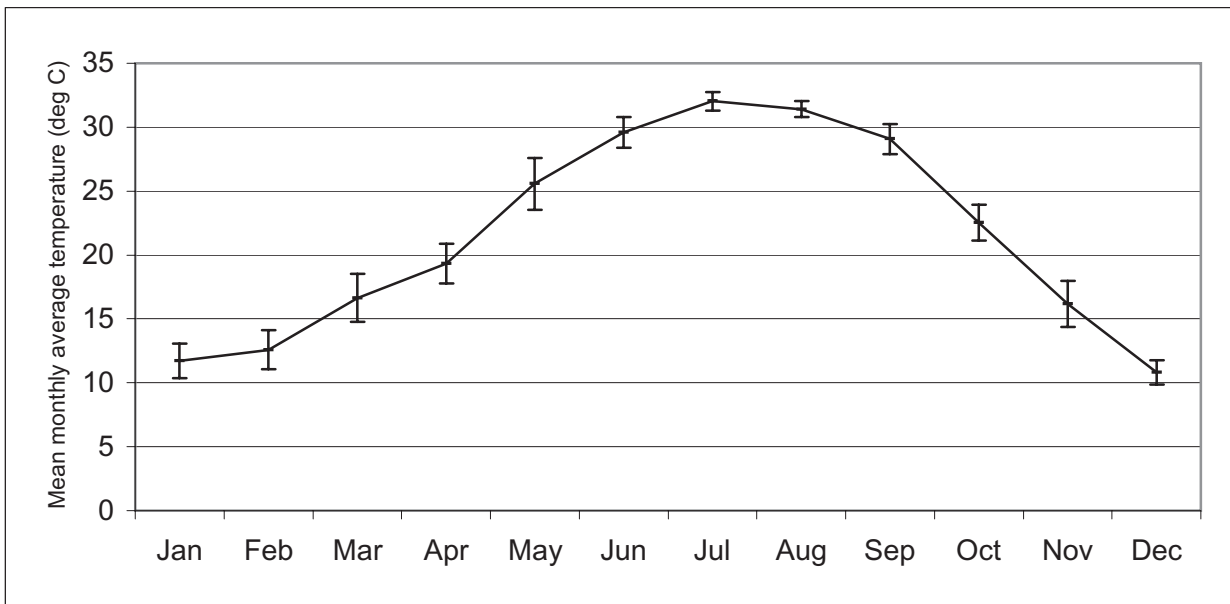


Figure D-4a. Mean monthly average temperatures at East Armenta weather station, 1995-2005.

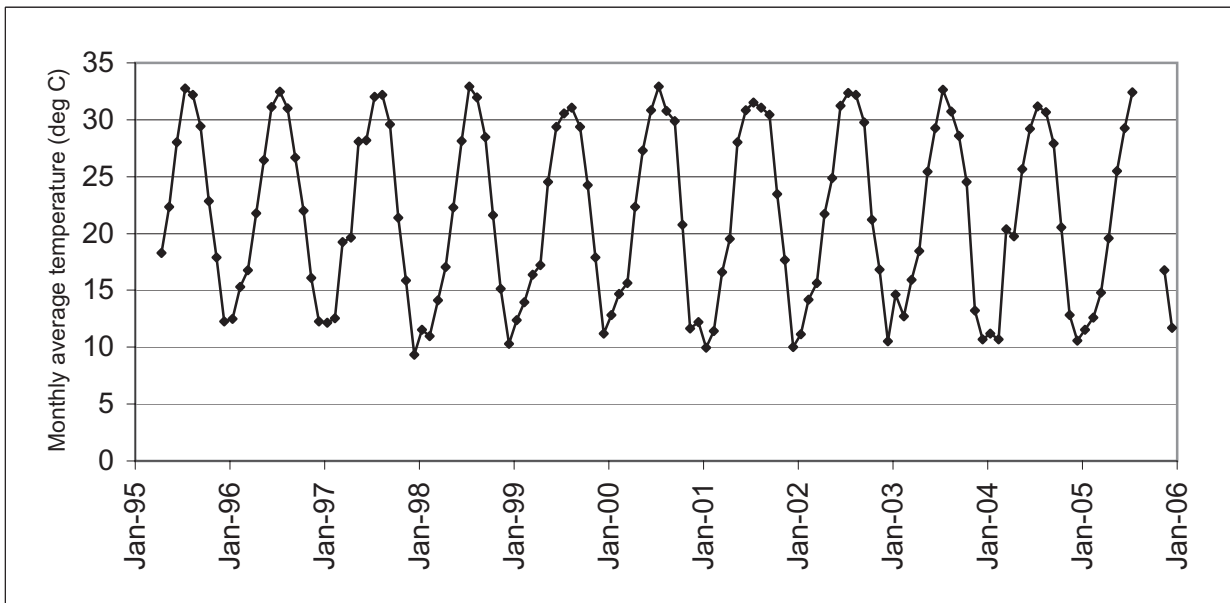


Figure D-4b. Monthly average temperatures at East Armenta weather station, 1995-2005.

Table D-5. Summary statistics for monthly average temperature at Bull Pasture weather station, 1995-2005, Organ Pipe Cactus N.M. Average annual temperature is 20.69 °C.

	Jan	Feb	Mar	Apr	May	Jun	Jul	Aug	Sep	Oct	Nov	Dec
Mean	13.02	12.72	15.86	18.24	24.15	27.83	29.53	28.58	27.18	21.90	16.68	12.54
S.D.	1.85	2.07	2.06	1.97	1.94	1.25	0.87	0.52	1.19	1.97	2.45	1.58
Skew	0.58	0.02	1.16	0.15	-0.87	-0.04	-1.30	0.76	-1.30	0.49	-0.48	-0.35
Max	16.55	15.22	19.94	21.36	26.52	29.66	30.49	29.62	28.68	25.34	20.48	14.91
Min	10.28	9.58	13.20	15.29	20.06	26.04	27.59	27.94	24.45	19.56	12.79	9.44
Years	10	10	10	10	10	10	10	10	10	11	11	11

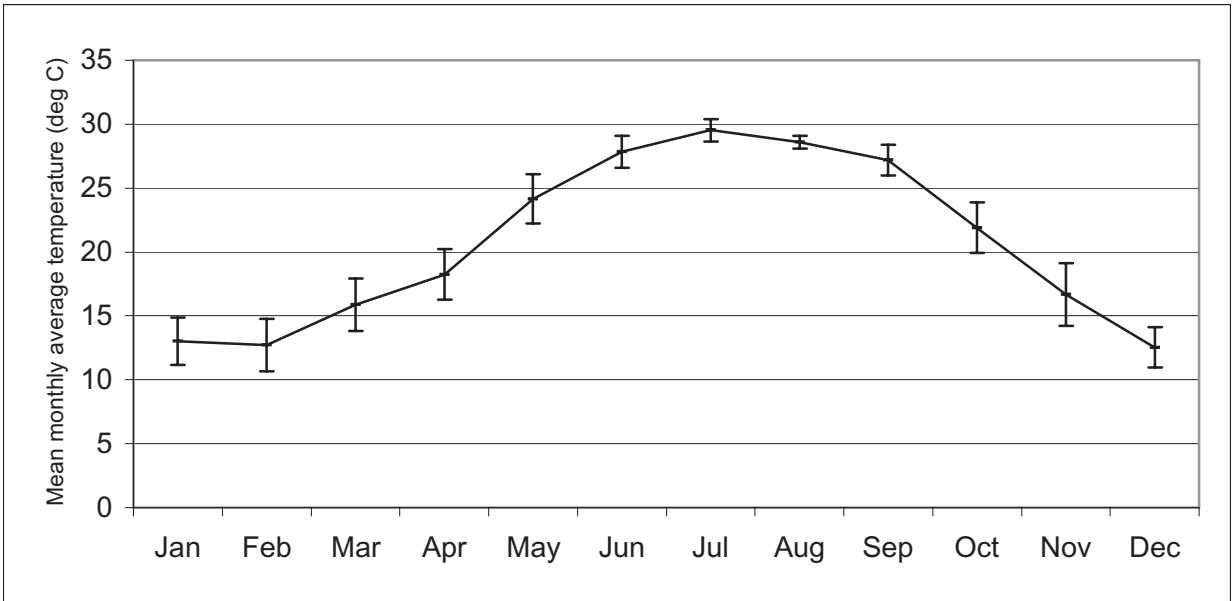


Figure D-5a. Mean monthly average temperatures at Bull Pasture weather station, 1995-2005.

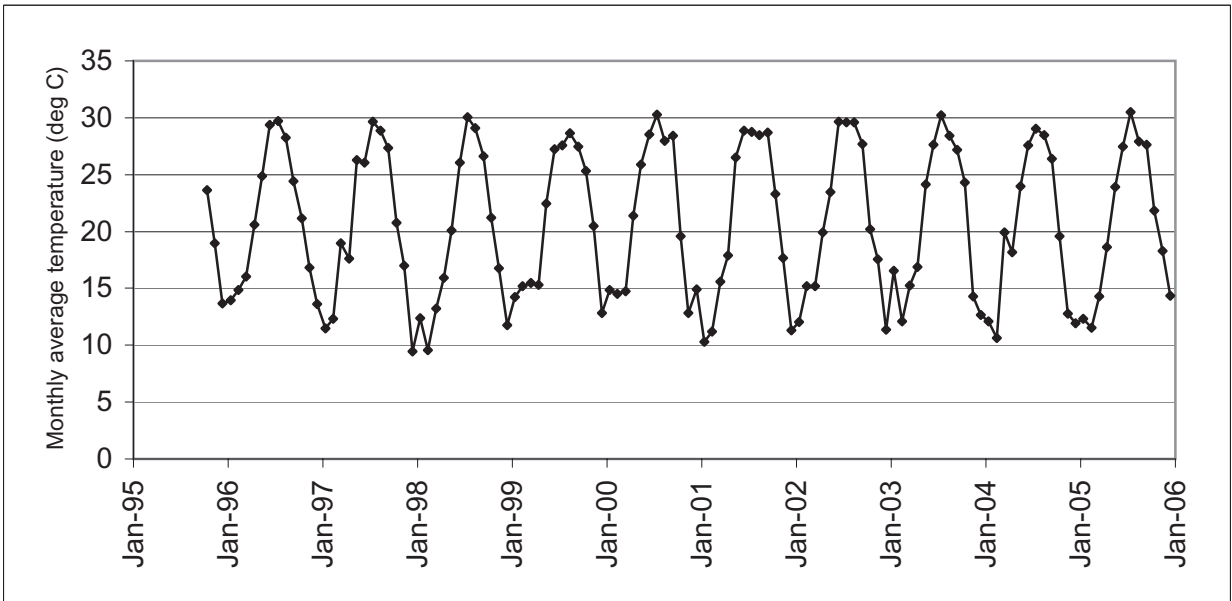


Figure D-5b. Monthly average temperatures at Bull Pasture weather station, 1995-2005.

Table D-6. Summary statistics for monthly average temperature at Growler Valley weather station, 1995-2005, Organ Pipe Cactus N.M. Average annual temperature is 22.61 °C.

	Jan	Feb	Mar	Apr	May	Jun	Jul	Aug	Sep	Oct	Nov	Dec
Mean	13.00	14.06	17.86	20.85	26.72	30.45	33.33	32.58	30.14	23.18	17.05	12.05
S.D.	1.33	1.61	2.04	1.84	1.87	1.29	0.75	0.66	0.96	1.12	1.96	1.14
Skew	0.64	0.40	1.00	-0.26	-0.57	0.05	-1.33	0.06	-0.83	0.62	-1.04	0.23
Max	15.55	16.86	21.45	23.26	29.30	32.29	34.19	33.58	31.32	25.17	19.37	13.72
Min	11.17	12.08	15.51	17.94	23.05	28.66	31.60	31.52	28.17	21.99	13.20	10.26
Years	9	9	9	10	10	11	11	11	10	10	10	11

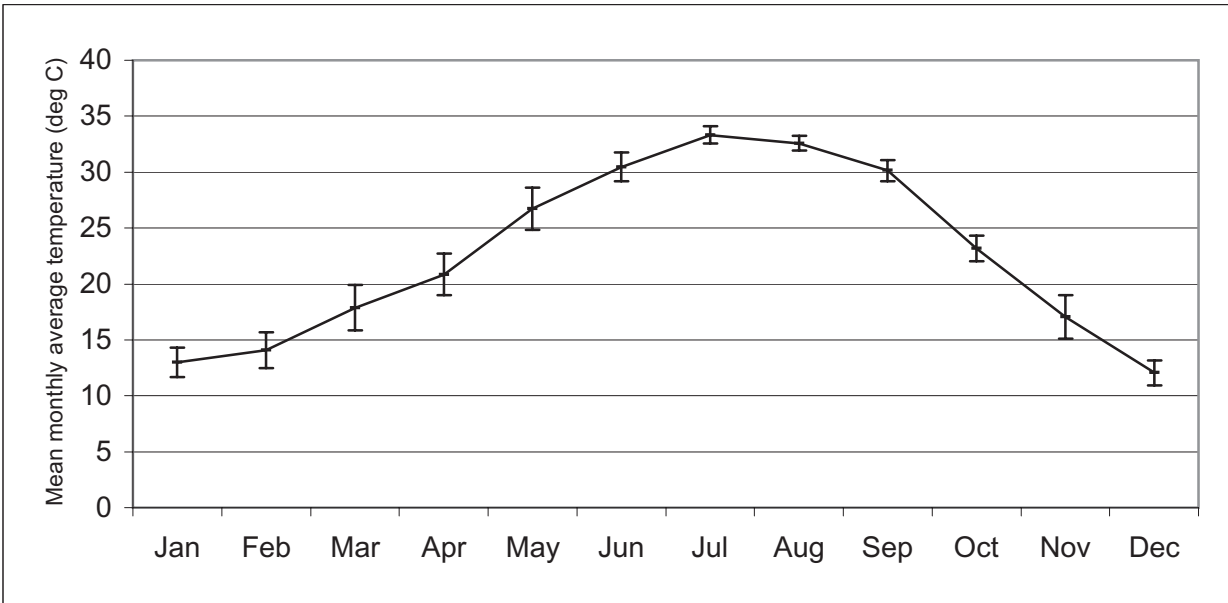


Figure D-6a. Mean monthly average temperatures at Growler Valley weather station, 1995-2005.

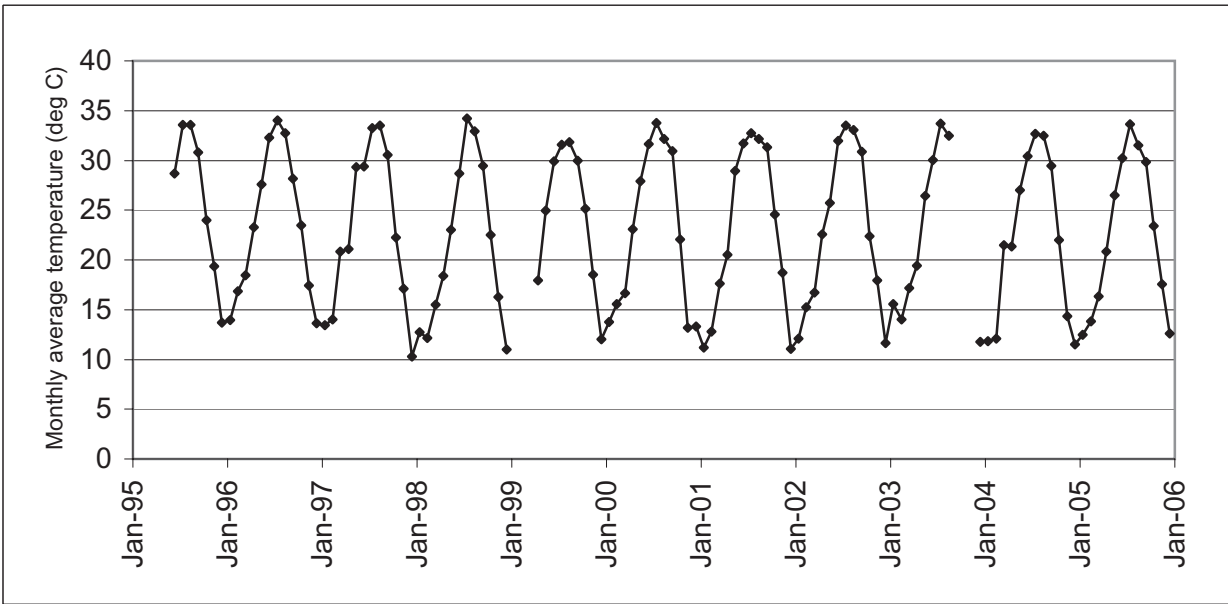


Figure D-6b. Monthly average temperatures at Growler Valley weather station, 1995-2005.

Table D-7. Summary statistics for monthly average temperature at Middle Bajada weather station, 1996-2005, Organ Pipe Cactus N.M. Average annual temperature is 21.59 °C.

	Jan	Feb	Mar	Apr	May	Jun	Jul	Aug	Sep	Oct	Nov	Dec
Mean	12.70	12.93	16.73	19.66	25.75	29.72	31.75	30.71	28.77	22.14	16.42	11.86
S.D.	1.65	1.62	2.01	1.83	1.82	1.23	0.78	0.69	1.20	1.46	2.23	1.19
Skew	1.17	-0.02	1.11	-0.07	-0.80	-0.31	-1.41	0.29	-1.23	1.13	-1.16	-0.12
Max	16.24	15.08	20.61	22.04	27.93	31.31	32.51	31.91	30.27	25.05	18.66	13.47
Min	10.39	10.51	14.24	16.98	21.97	27.61	29.97	29.76	26.16	20.70	12.30	9.88
Years	9	9	10	10	10	10	10	10	9	9	9	10

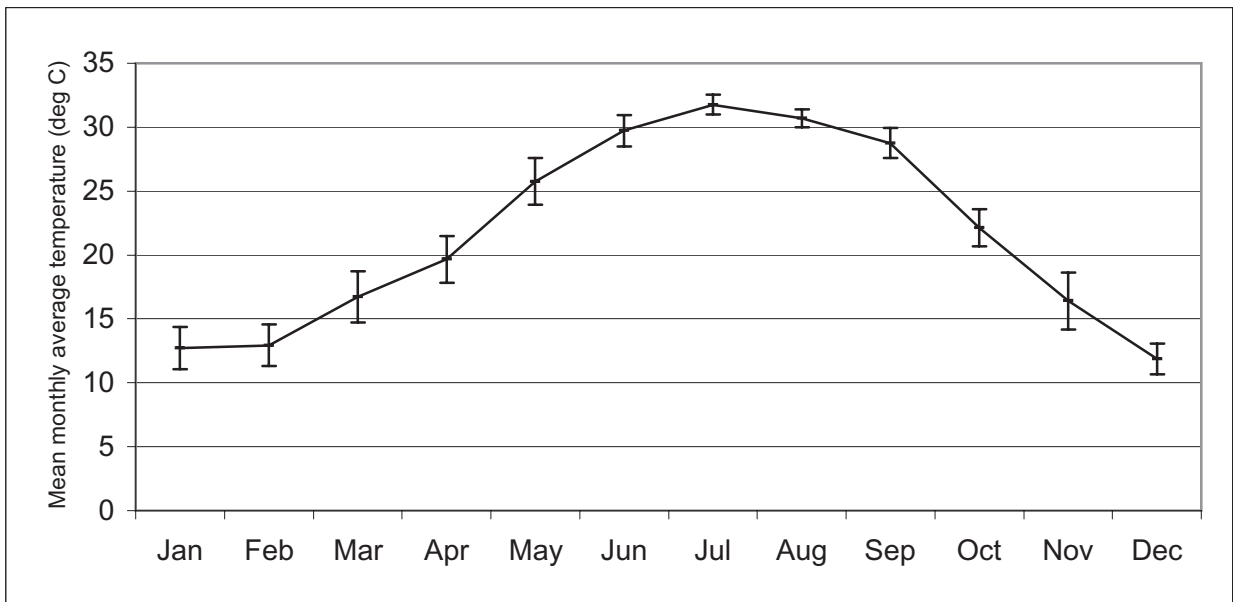


Figure D-7a. Mean monthly average temperatures at Middle Bajada weather station, 1996-2005.

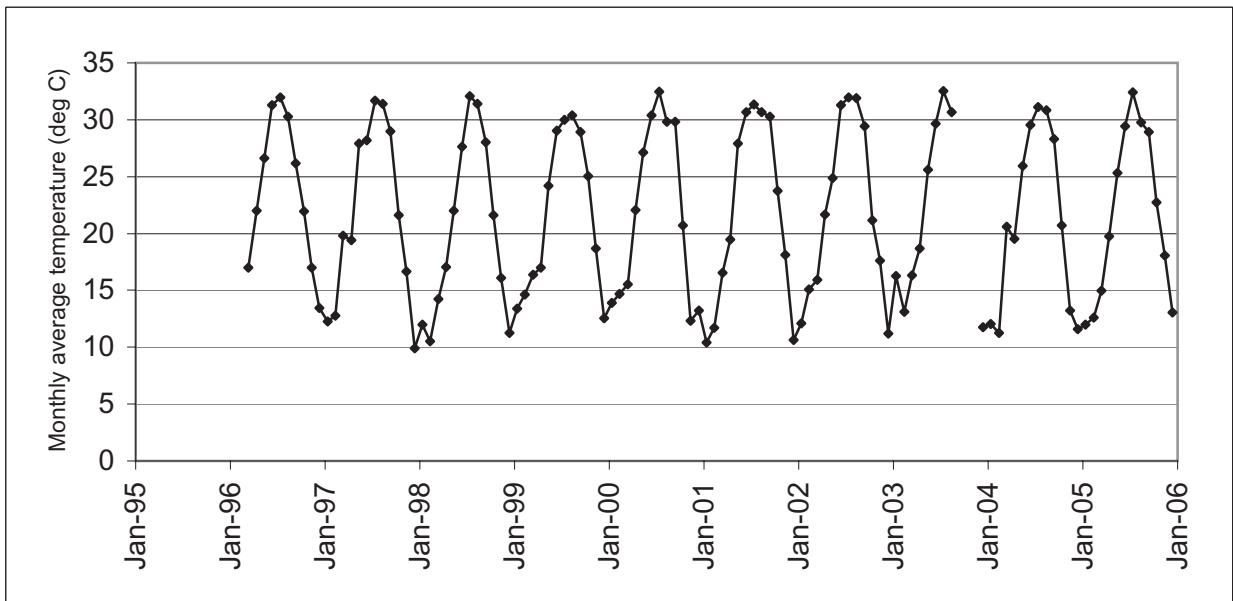


Figure D-7b. Monthly average temperatures at Middle Bajada weather station, 1996-2005.

Table D-8. Summary statistics for monthly average temperature at Pozo Nuevo weather station, 1996-2005, Organ Pipe Cactus N.M. Average annual temperature is 22.12 °C.

	Jan	Feb	Mar	Apr	May	Jun	Jul	Aug	Sep	Oct	Nov	Dec
Mean	12.51	13.60	17.42	20.49	26.36	30.14	32.64	32.07	29.59	23.13	16.02	11.52
S.D.	1.31	1.35	1.80	1.81	1.72	1.14	0.60	0.63	1.00	1.35	2.04	1.00
Skew	0.75	-0.29	1.11	-0.17	-0.61	-0.20	-0.64	0.67	-1.33	0.41	-0.62	-0.04
Max	15.14	15.26	21.02	23.04	28.70	31.77	33.43	33.08	30.62	25.12	18.26	12.97
Min	10.61	11.70	15.11	17.80	22.96	28.21	31.46	31.37	27.42	21.48	12.30	9.88
Years	9	10	10	10	10	10	10	10	9	9	10	10

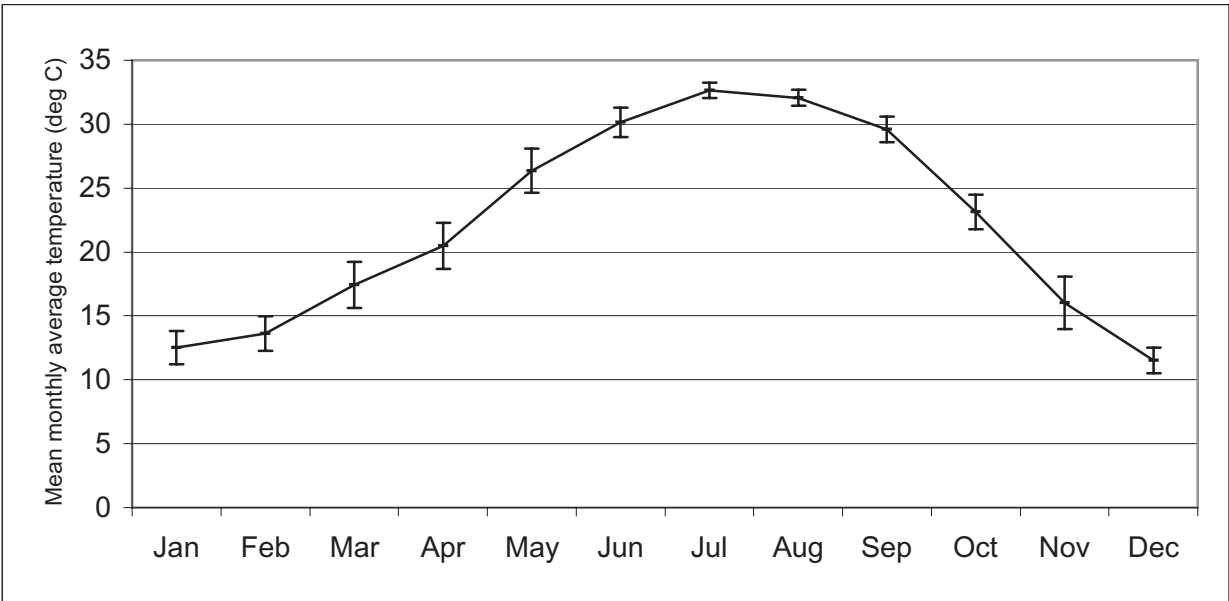


Figure D-8a. Mean monthly average temperatures at Pozo Nuevo weather station, 1996-2005.

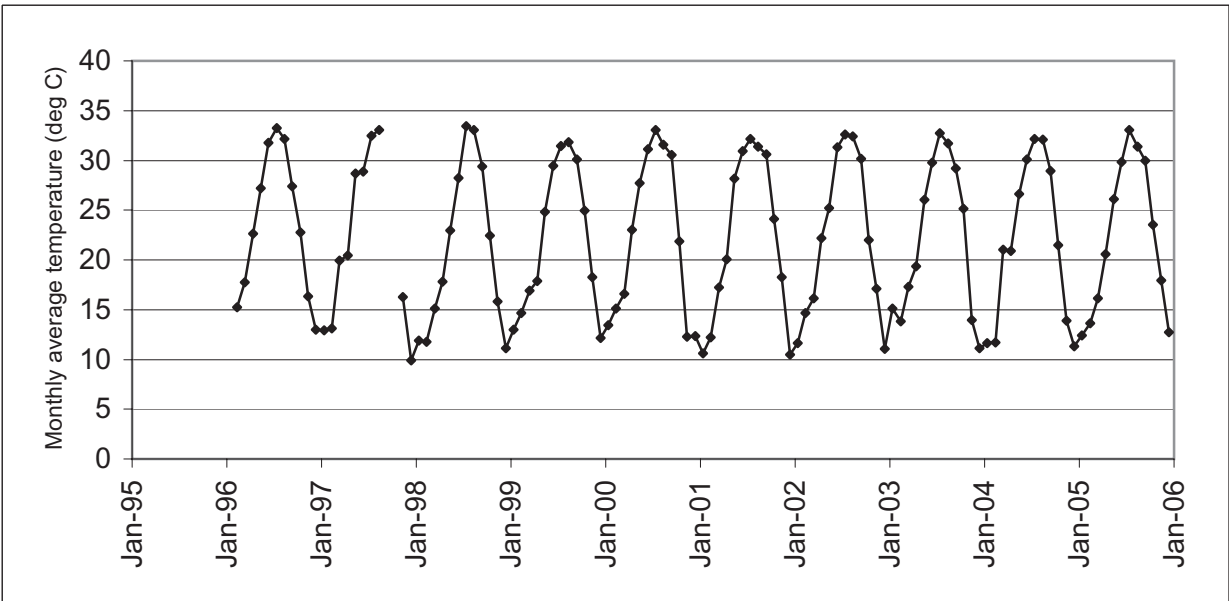


Figure D-8b. Monthly average temperatures at Pozo Nuevo weather station, 1996-2005.



Table D-9. Summary statistics for monthly average temperature at Salsola Site weather station, 1995-2005, Organ Pipe Cactus N.M. Average annual temperature is 20.26 °C.

	Jan	Feb	Mar	Apr	May	Jun	Jul	Aug	Sep	Oct	Nov	Dec
Mean	10.71	11.70	15.05	18.58	24.30	28.15	31.46	30.67	28.13	20.71	13.94	9.72
S.D.	1.11	1.29	1.83	1.58	1.81	1.08	0.64	0.61	0.45	1.31	1.82	0.63
Skew	0.71	-0.50	2.30	-0.10	-0.38	-0.02	-0.63	0.64	0.22	0.95	-0.70	-0.26
Max	13.03	13.30	19.37	20.88	26.69	29.66	32.17	31.70	28.91	23.27	16.03	10.57
Min	9.15	9.64	13.49	16.13	21.06	26.66	30.26	29.90	27.45	19.06	10.60	8.83
Years	10	8	8	10	9	10	10	10	10	9	9	9

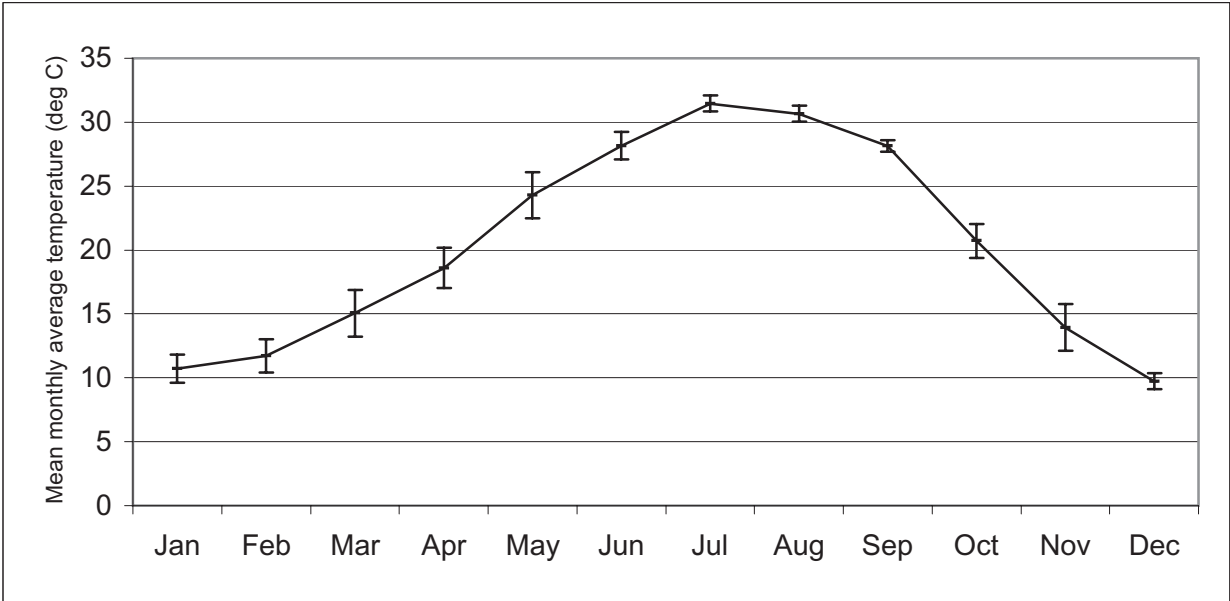


Figure D-9a. Mean monthly average temperatures at Salsola Site weather station, 1995-2005.

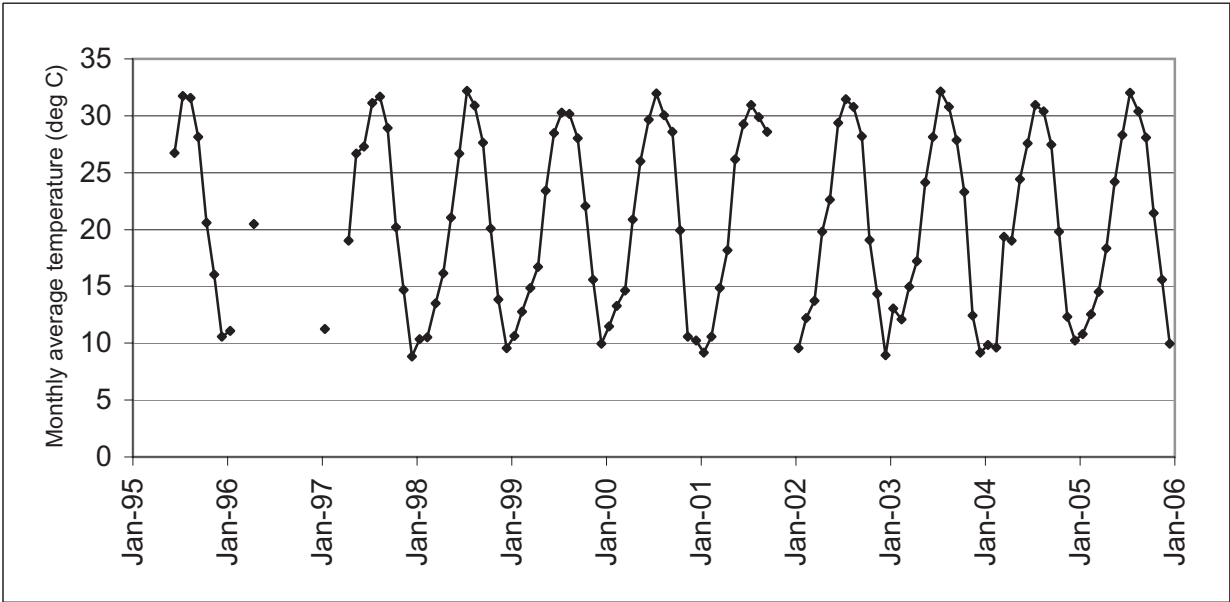


Figure D-9b. Monthly average temperatures at Salsola Site weather station, 1995-2005.

Table D-10. Summary statistics for monthly average temperature at Senita Basin weather station, 1995-2005, Organ Pipe Cactus N.M. Average annual temperature is 22.26 °C.

	Jan	Feb	Mar	Apr	May	Jun	Jul	Aug	Sep	Oct	Nov	Dec
Mean	13.61	14.13	17.45	20.52	25.77	29.40	32.08	31.44	29.16	23.29	17.28	12.98
S.D.	1.45	1.80	2.09	1.63	1.93	1.35	0.64	0.61	0.93	1.56	2.16	1.35
Skew	1.19	-0.28	0.95	-0.23	-0.87	-0.11	-2.42	0.50	-0.55	0.36	-0.61	-0.30
Max	16.88	16.43	21.24	22.50	28.07	31.23	32.66	32.42	30.42	25.61	19.68	14.73
Min	11.57	11.34	14.85	17.87	21.97	27.27	30.30	30.68	27.30	21.40	13.81	10.57
Years	10	9	9	8	9	10	11	10	10	10	10	10

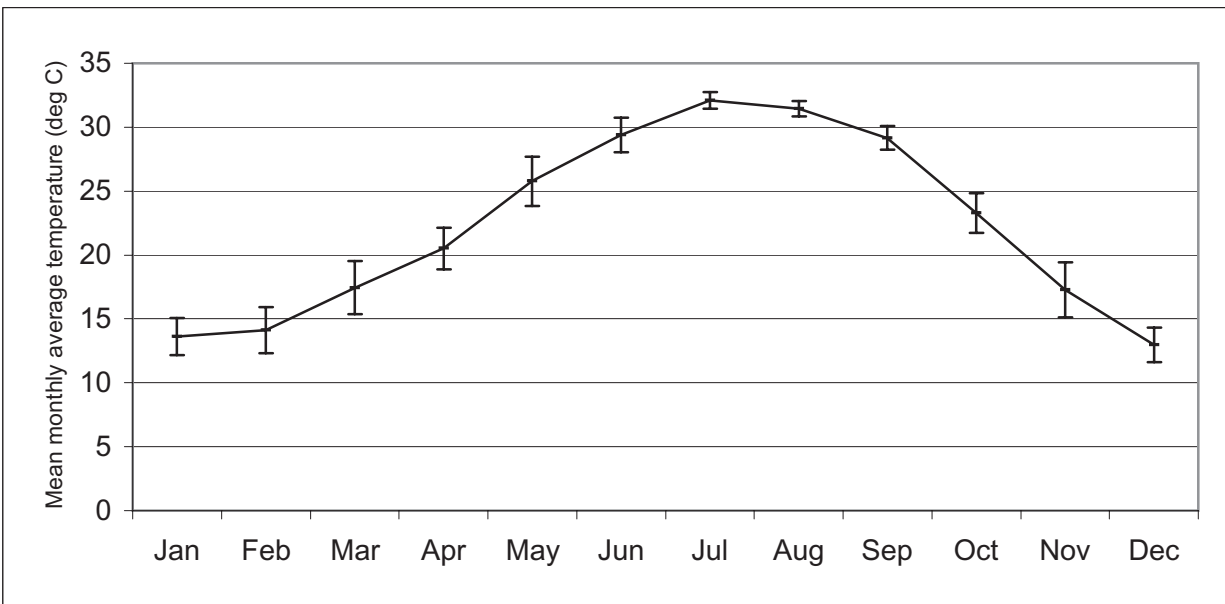


Figure D-10a. Mean monthly average temperatures at Senita Basin weather station, 1995-2005.

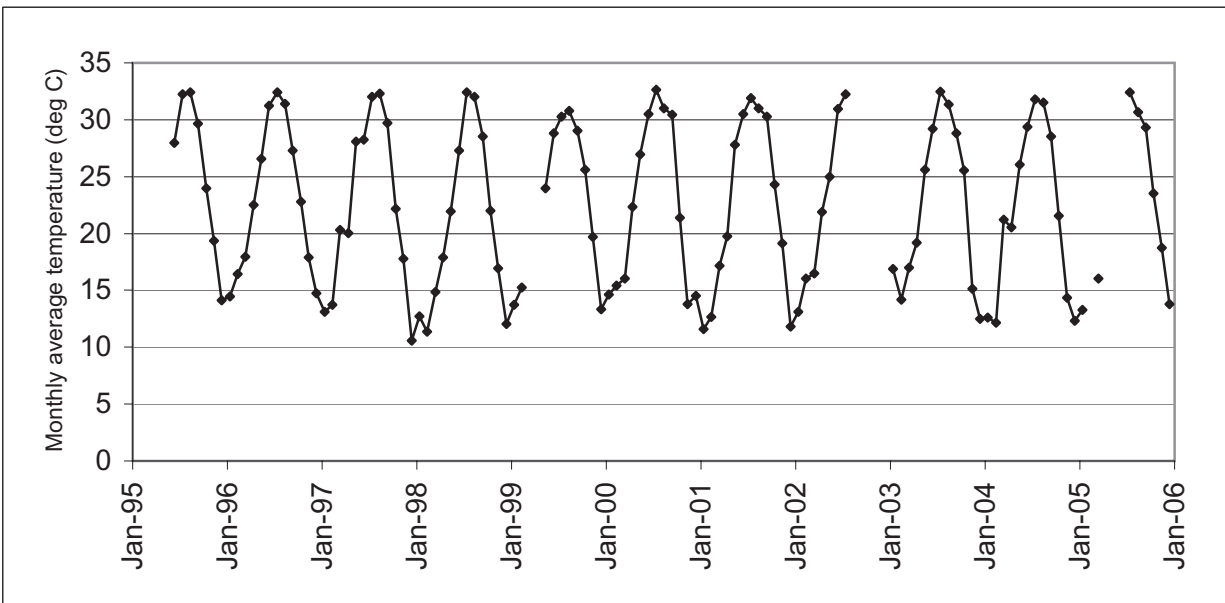


Figure D-10b. Monthly average temperatures at Senita Basin weather station, 1995-2005.

Table D-11. Summary statistics for monthly average temperature at Valley Floor weather station, 1996-2005, Organ Pipe Cactus N.M. Average annual temperature is 20.82 °C.

	Jan	Feb	Mar	Apr	May	Jun	Jul	Aug	Sep	Oct	Nov	Dec
Mean	10.76	11.77	15.92	19.19	25.44	29.49	32.27	31.25	28.66	21.38	14.09	9.62
S.D.	1.24	1.09	1.84	1.81	1.84	1.17	0.81	0.55	1.03	1.26	1.89	0.74
Skew	0.65	-0.41	1.06	-0.37	-0.45	-0.12	-0.74	1.18	-0.79	0.41	-0.70	1.00
Max	13.26	13.29	19.59	21.26	28.07	30.94	33.03	32.32	29.97	23.38	16.44	11.19
Min	8.82	10.02	13.73	16.27	21.86	27.58	30.83	30.69	26.60	20.13	10.56	8.78
Years	9	9	10	10	10	10	9	9	9	8	10	10

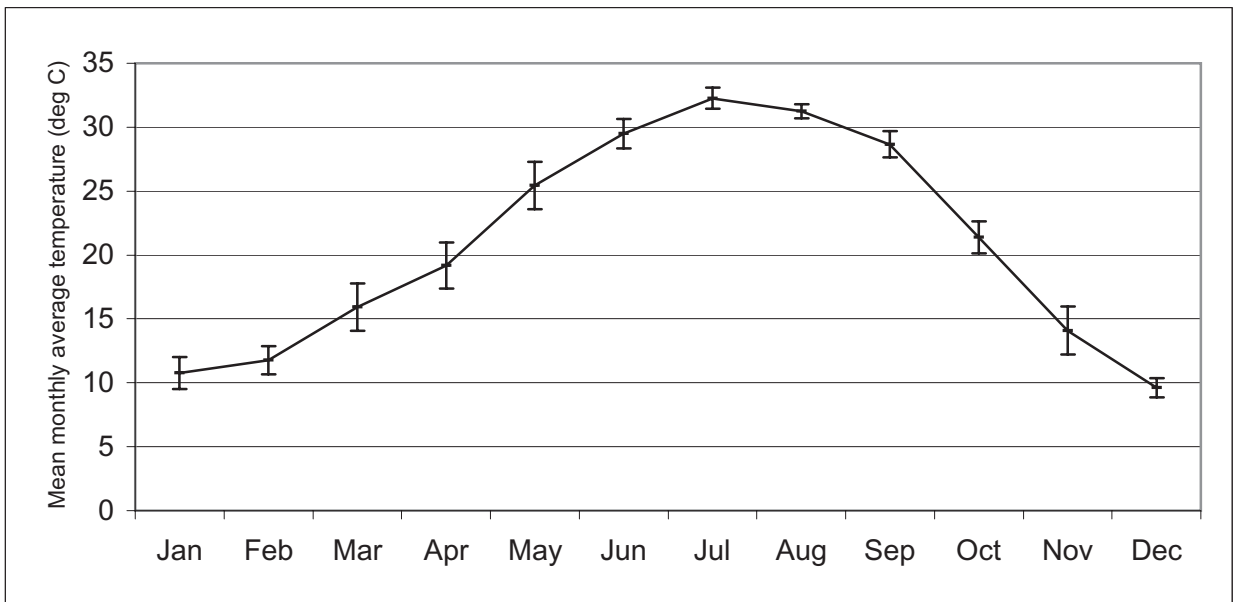


Figure D-11a. Mean monthly average temperatures at Valley Floor weather station, 1996-2005.

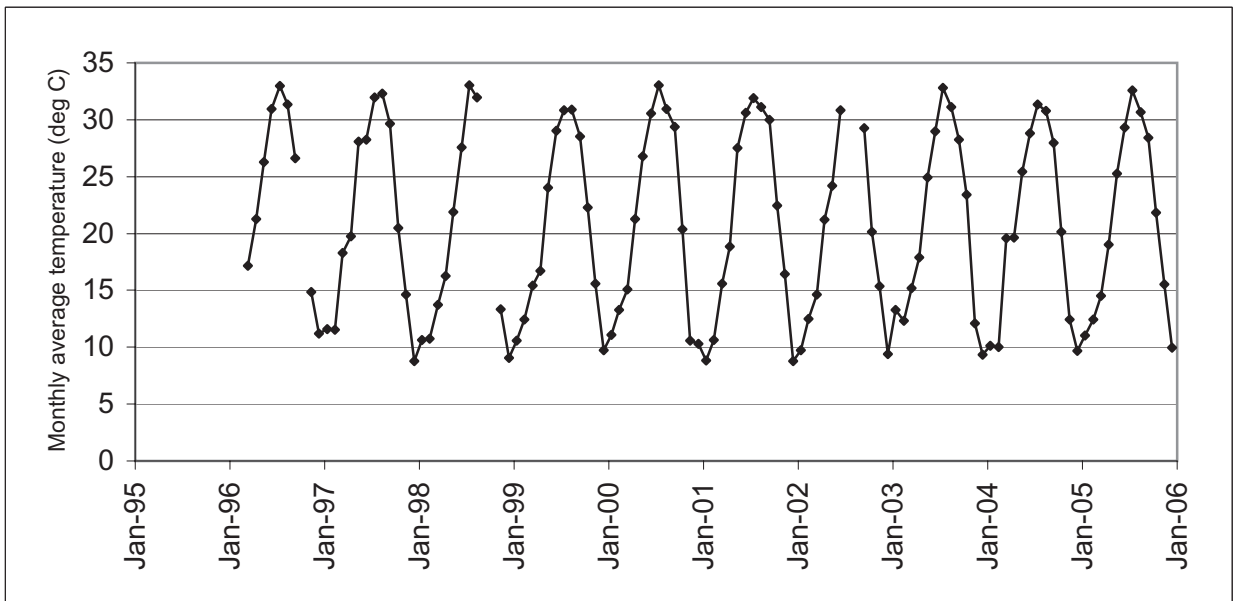


Figure D-11b. Monthly average temperatures at Valley Floor weather station, 1996-2005.