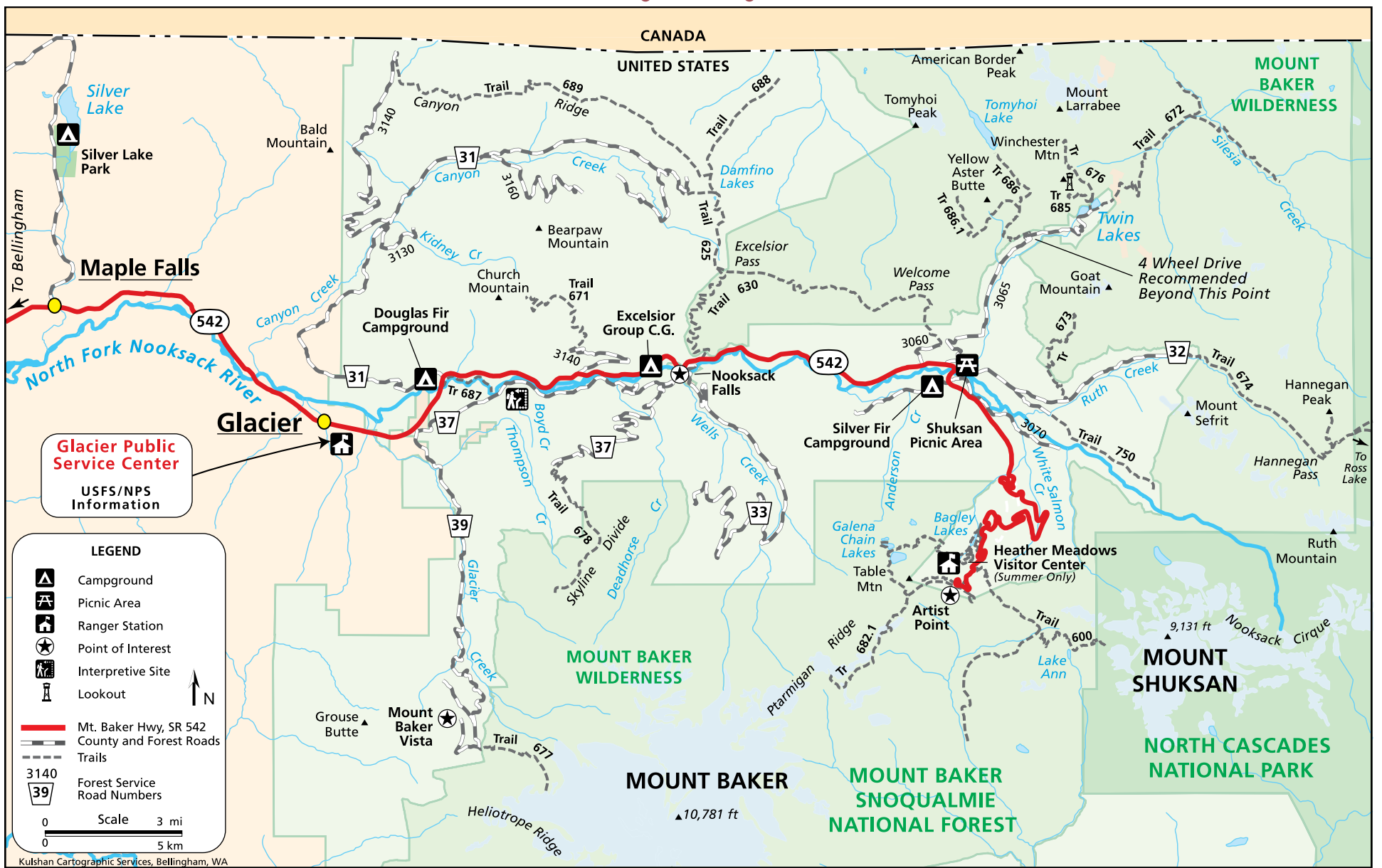


Mt. Baker Scenic Byway (State Route 542)



Popular Trails along the Mt. Baker Scenic Byway

Glacier Area Trails

Trail #	Name	Access	Distance one-way miles	Remarks
625	Damfino Lakes	Road 31	3.0 (4.8 km)	No fires, connects with High Divide
630	High Divide	Hwy 542	13.0 (20.9 km)	Wilderness, no fires, stock 8/1 to 11/1
671	Church Mountain	Road 3040	4.2 (6.8 km)	Steep hike up forested slopes
677	Heliotrope Ridge	Road 39	3.7 (6.0 km)	Wilderness, no fires
678	Skyline Divide	Road 37	5.5 (8.9 km)	Wilderness, no fires, stock 8/1 to 11/1
687	Horseshoe Bend	Hwy 542	1.5 (2.4 km)	Follows Nooksack River
673	Goat Mountain	Road 32	4.0 (6.4 km)	Wilderness, stock allowed 8/1 to 11/1
674	Hannegan Pass	Road 32	5.0 (8.0 km)	Wilderness, no fires, enters National Park, stock allowed 7/1 to 11/1
685	Winchester Mtn.	Road 3065	2.0 (3.2 km)	High clearance vehicle needed on road, Wilderness, no fires
686	Tomyhoi Lake	Road 3065	4.0 (6.4 km)	Wilderness
686.1	Yellow Aster Butte	Road 3065	2.0 (3.2 km)	Wilderness, no fires
626	Boyd Creek	Road 37	0.25 (0.4 km)	Accessible, Interpretive

Heather Meadows Area Trails

600	Lake Ann	Hwy 542	4.8 (7.7 km)	Wilderness, no fires
682.1	Ptarmigan Ridge	Trail 682	5.0 (8.0 km)	Wilderness, no fires
681	Table Mountain	Hwy 542	0.7 (1.1 km)	Wilderness, no fires, no dogs
682	Chain Lakes	Hwy 542	6.5 loop	Wilderness, no fires, camp at designated sites only
735	Picture Lake	Hwy 542	0.5 loop	Accessible, Interpretive
684.2	Fire and Ice	Hwy 542	0.5 loop	Accessible, Interpretive
684.3	Wild Goose	Hwy 542	2.5 (4.0 km)	No camping one mile from trail
669	Artist Ridge	Hwy 542	1.0 loop	Accessible viewpoint

A Northwest Forest Pass is required at posted recreation sites and trailheads. Always check trail and road conditions at the Forest Service website or by calling a ranger station.

Heather Meadows Area »

Located along the upper reaches of the byway, this spectacular sub-alpine setting offers summer day-use recreation along a network of scenic trails. Visitors can spread out a picnic lunch at Austin Pass Picnic Area and enjoy several self-guided interpretive trails. Several longer hikes lead into the surrounding Mt. Baker Wilderness, where Wilderness regulations apply. When entering such areas, be prepared for risk and challenge. The terrain can be rugged and the weather unpredictable.

Check in with staff at the Heather Meadows Visitor Center for current conditions and area histories. Open daily in the summer from 10 a.m. to 4 p.m. A Northwest Forest Pass is required for visiting this area. During winter months, check avalanche forecasts at www.nwac.noaa.gov or call (206) 526-6677.

THE SCENIC MT. BAKER HIGHWAY winds along the North Fork of the Nooksack River, ending at Artist Point at 5,040 feet (1536m), above Heather Meadows. The last 24 miles (39 km) is designated as a National Forest Scenic Byway. At the road's end, trail systems lead into the Mt. Baker Wilderness. During winter months motor traffic ends at the Mt. Baker Ski Area 2.5 miles (4 km) below Artist Point.

Points of Interest

- » Glacier Public Service Center, located at milepost 34, is listed on the National Register of Historic Places. The service center is jointly operated by the Forest Service and National Park Service during the summer season.
- » Forest Service Campgrounds: Douglas Fir, Silver Fir and Excelsior Group Camp offer rustic camps in forested settings.
- » Boyd Creek Interpretive Trail, Forest Road 37: This short, self-guided nature trail focuses on components of a healthy fish habitat.
- » Nooksack Falls, milepost 40: A dramatic waterfall plummets more than 100 feet over rocky outcrops. A fence-lined pathway leads to a viewpoint.
- » Shuksan Picnic Area: Day use area along the North Fork Nooksack River at the base of Forest Road 32 (Hannegan Road).

