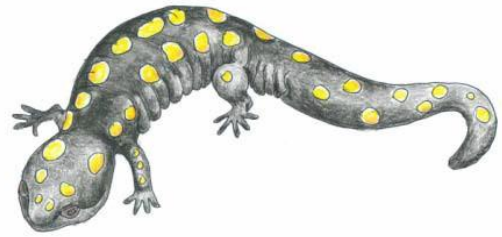


Capture! Mark! Recapture! Salamander Slaughter!

Spotted Salamander *Ambystoma maculatum*



Population estimation formula:

$$P = \frac{N1 \times N2}{M}$$

N1 = number of individuals initially capture and marked

N2 = number of individuals in second or recapture sample

M = number of *marked* individuals in second or recapture sample

P = population estimate

Table 1.

Sample	N ₁	N ₂	M	P	deviation from observed mean
1					
2					
3					
				Mean/Avg.=	Avg. dev. =