

Tracing the Civil War

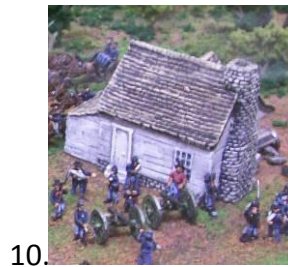
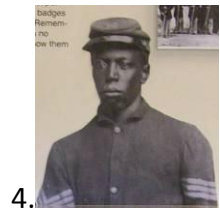
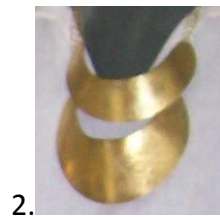
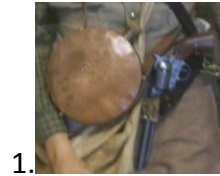
The American Civil War along the Natchez Trace: Mississippi



Mississippi's Final Stands Interpretive Center

Student Scavenger Hunt

Directions: As you tour the Interpretive Center, try to identify these ten objects and people. Describe the exhibit where you found it.



Bonus: This young man who fought at Brice's Crossroads became famous after the Civil War. Find him and identify him!

