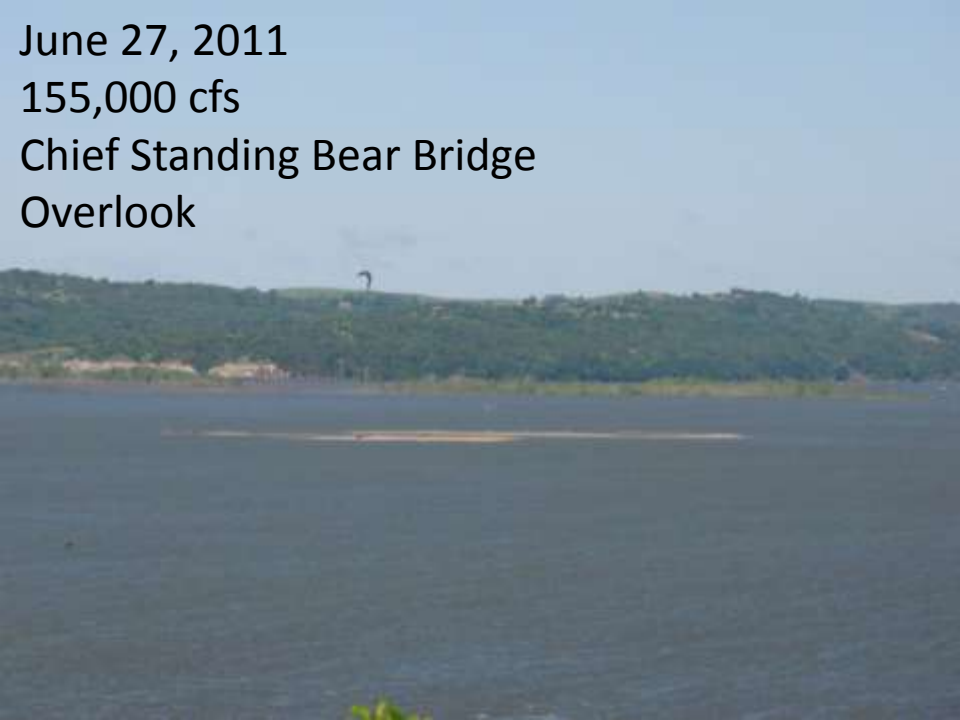
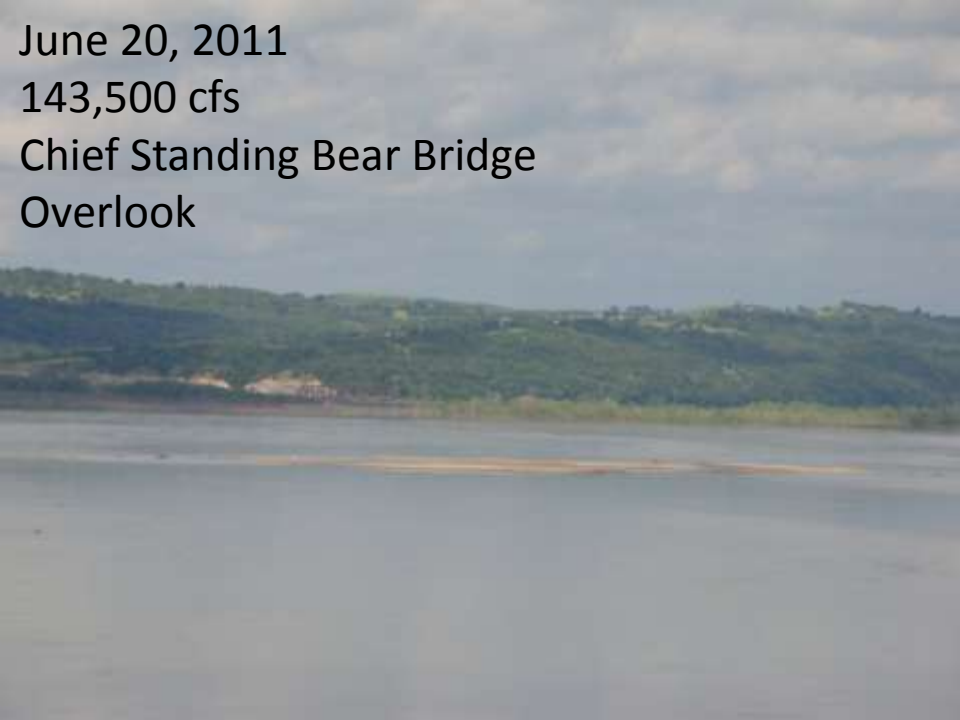
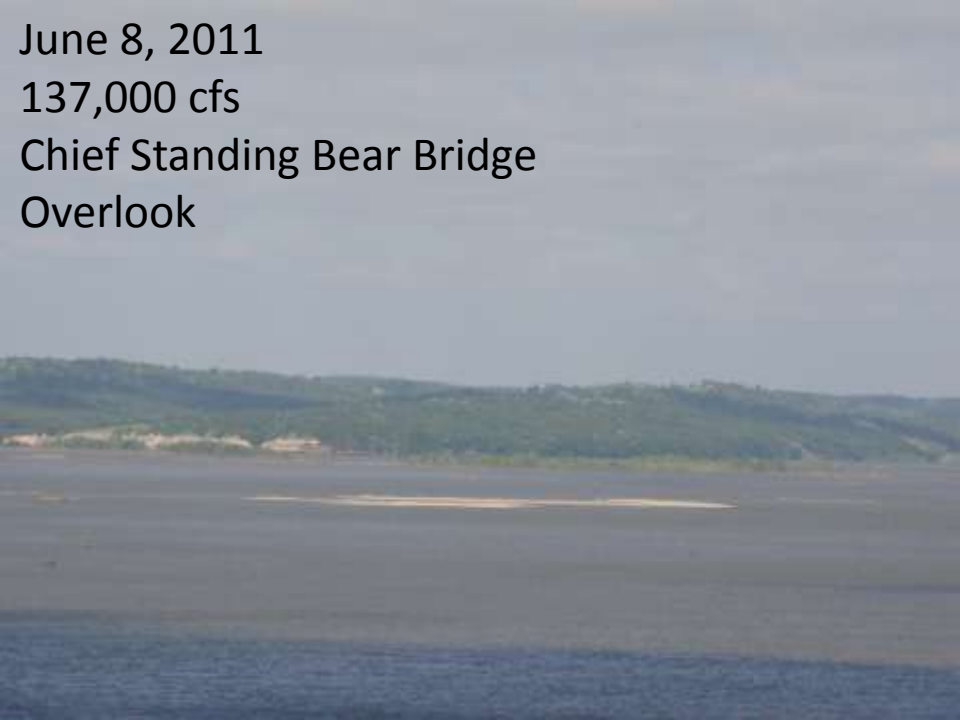
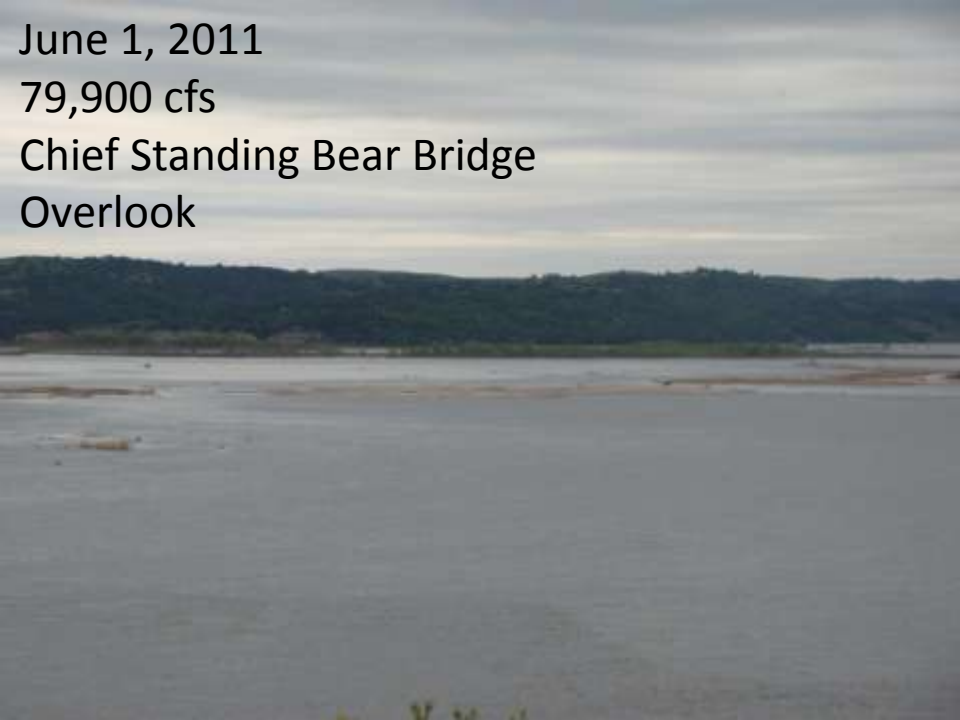


August 15, 2011
148,000 cfs
Chief Standing Bear Bridge
Overlook

September 9, 2011
87,000 cfs
Chief Standing Bear Bridge
Overlook

October 12, 2011
38,000 cfs
Chief Standing Bear Bridge
Overlook



August 15, 2011

148,000 cfs

Chief Standing Bear Bridge
Overlook



September 9, 2011

87,000 cfs

Chief Standing Bear Bridge
Overlook

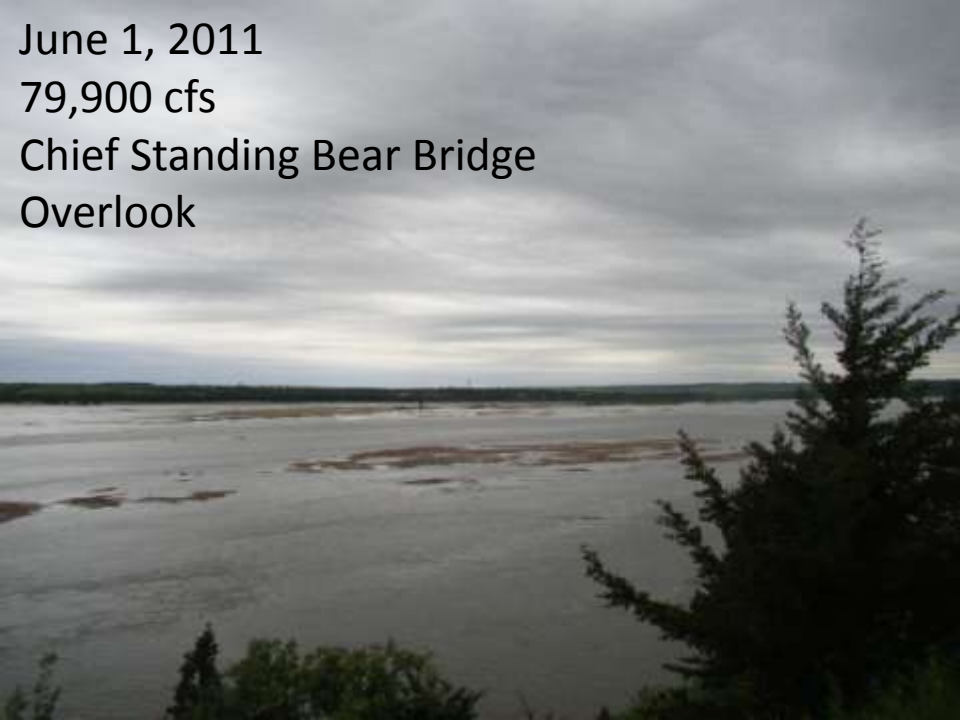


October 12, 2011

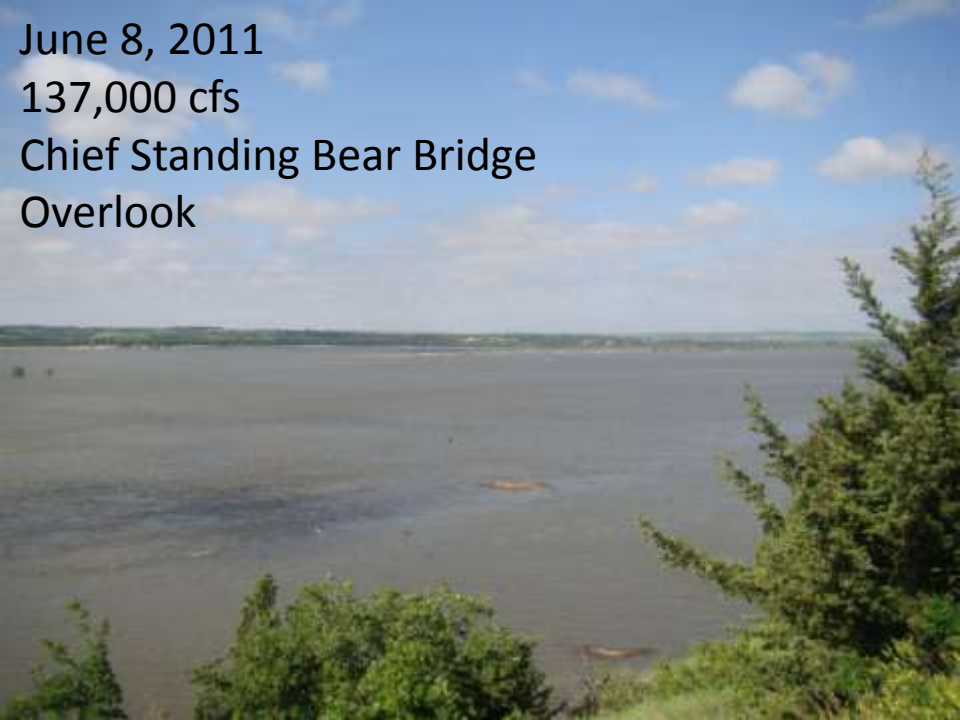
38,000 cfs

Chief Standing Bear Bridge
Overlook

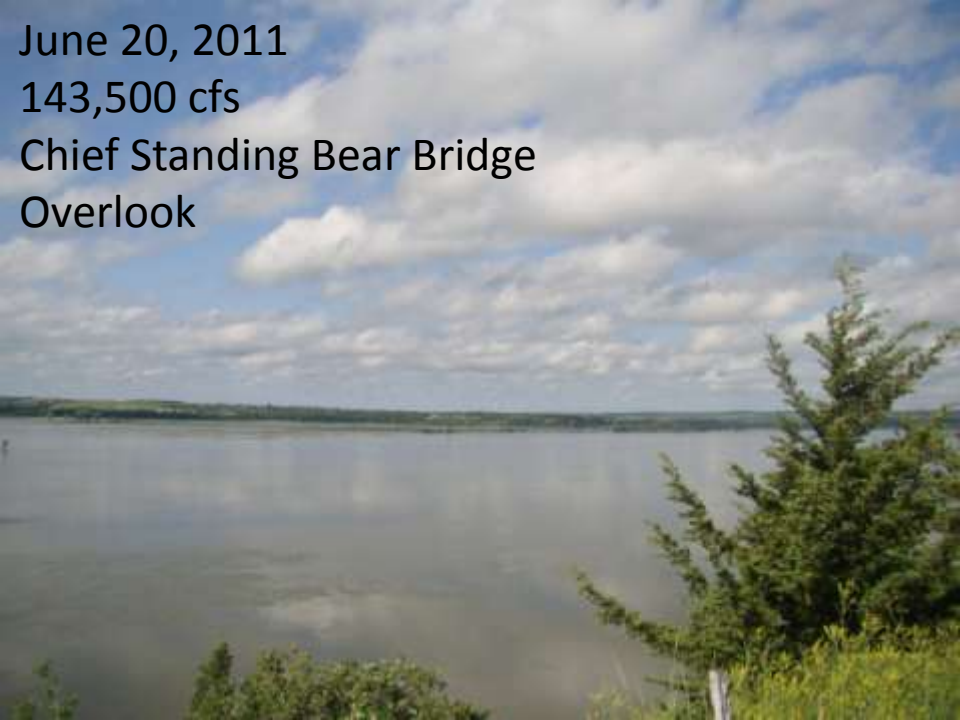




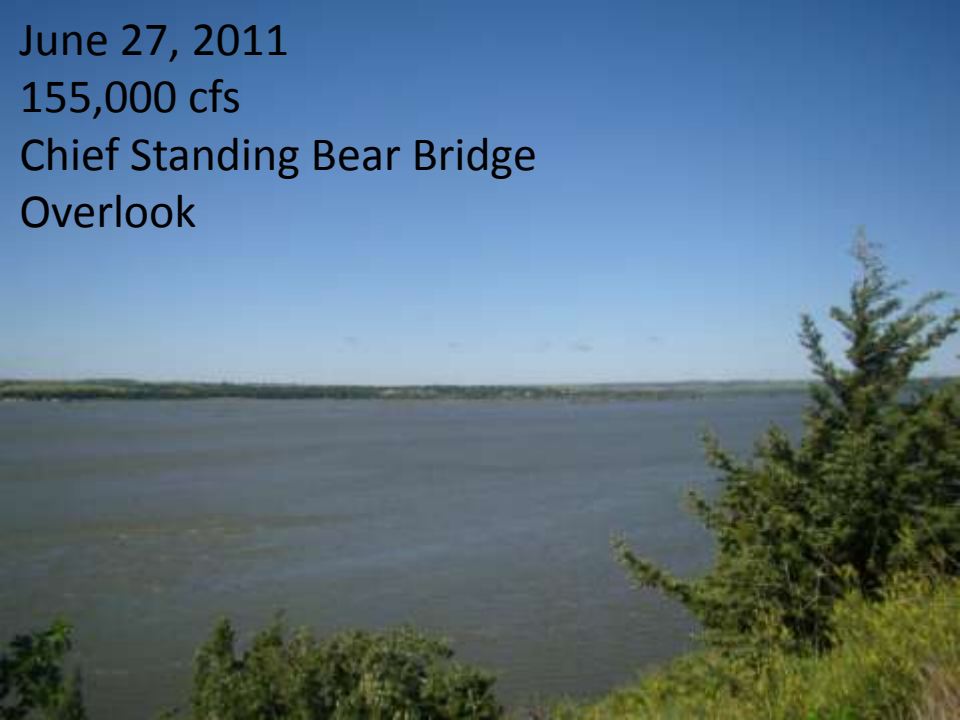
June 1, 2011
79,900 cfs
Chief Standing Bear Bridge
Overlook



June 8, 2011
137,000 cfs
Chief Standing Bear Bridge
Overlook



June 20, 2011
143,500 cfs
Chief Standing Bear Bridge
Overlook



June 27, 2011
155,000 cfs
Chief Standing Bear Bridge
Overlook

July 20, 2011

156,000 cfs

Chief Standing Bear Bridge
Overlook



August 15, 2011

148,000 cfs

Chief Standing Bear Bridge
Overlook



September 9, 2011

87,000 cfs

Chief Standing Bear Bridge
Overlook

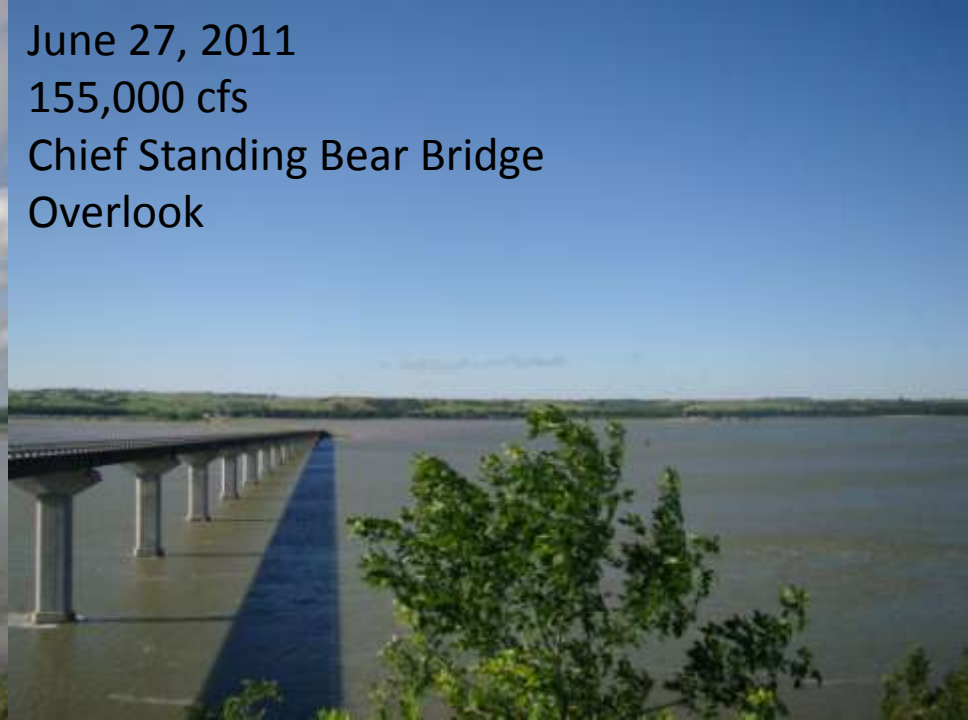
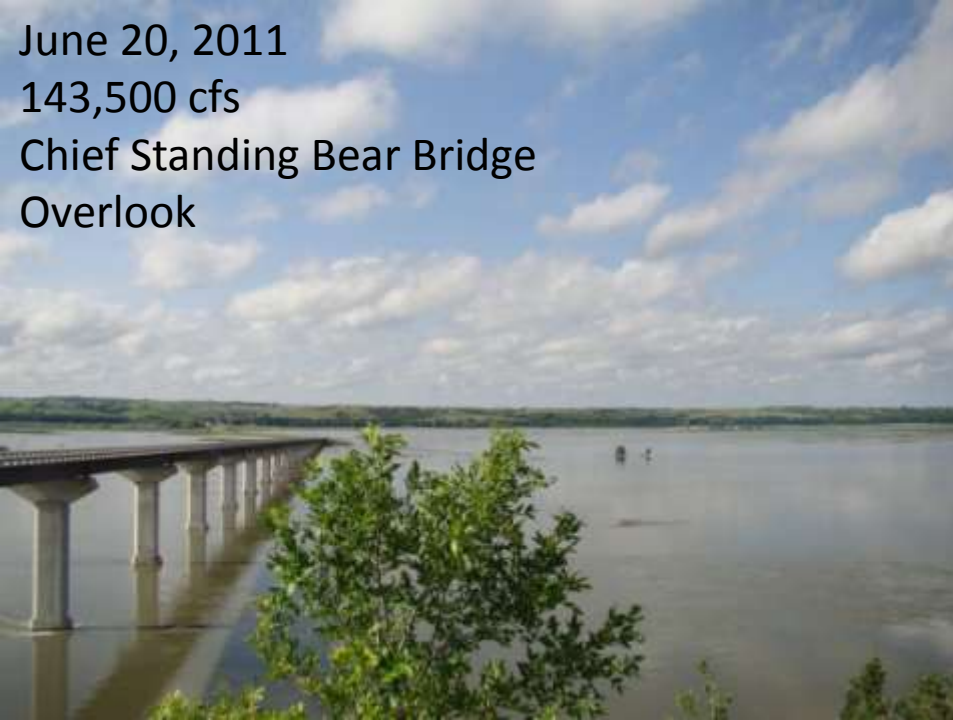
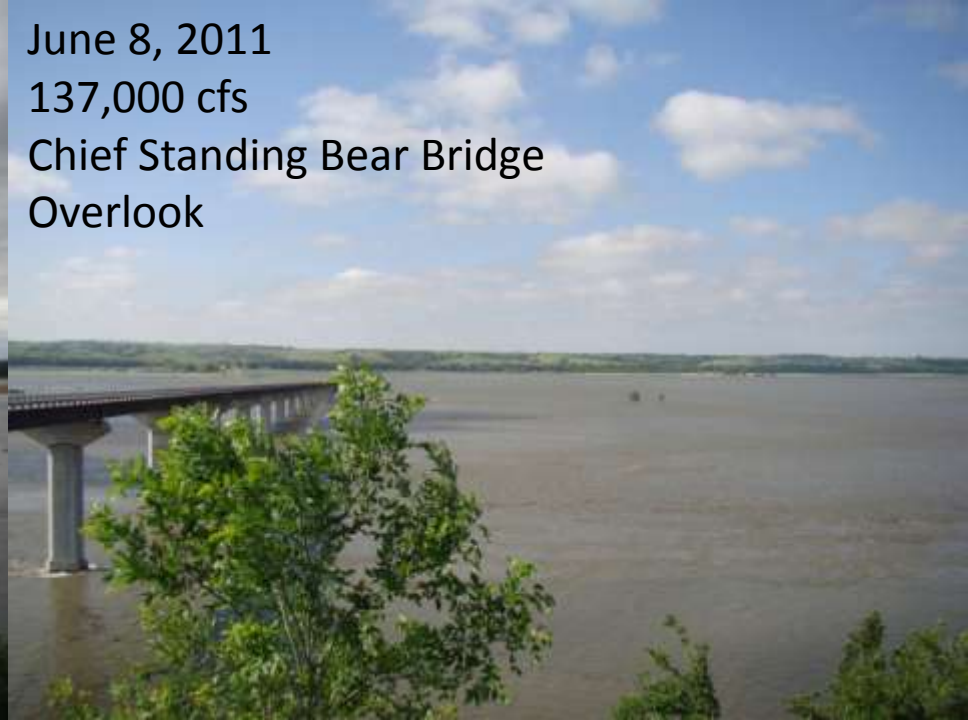
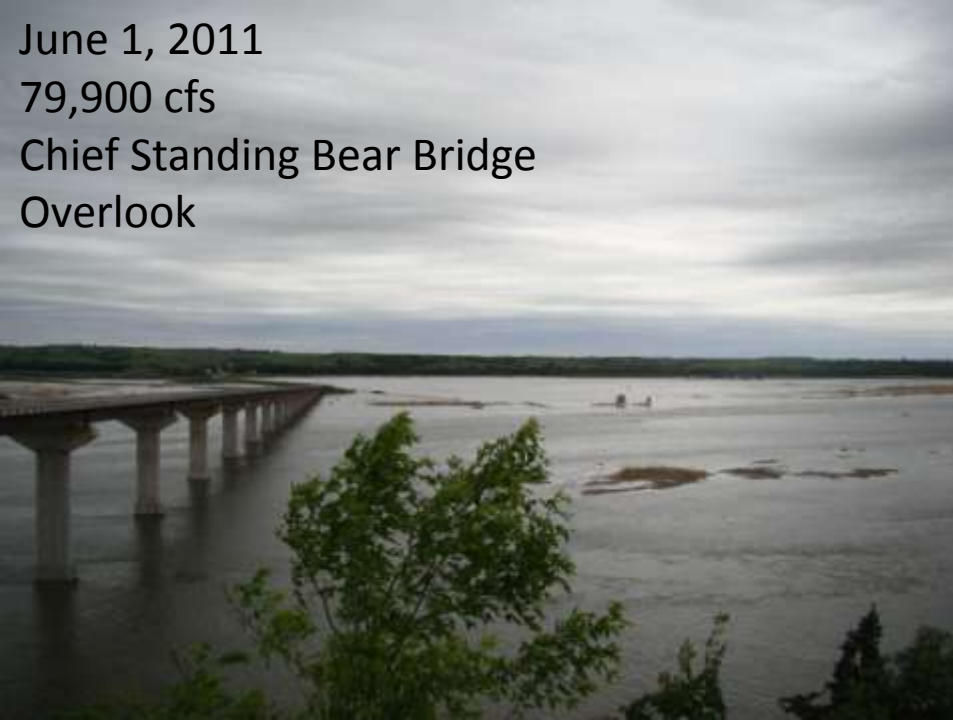


October 12, 2011

38,000 cfs

Chief Standing Bear Bridge
Overlook





July 20, 2011

156,000 cfs

Chief Standing Bear Bridge
Overlook



August 15, 2011

148,000 cfs

Chief Standing Bear Bridge
Overlook



September 9, 2011

87,000 cfs

Chief Standing Bear Bridge
Overlook

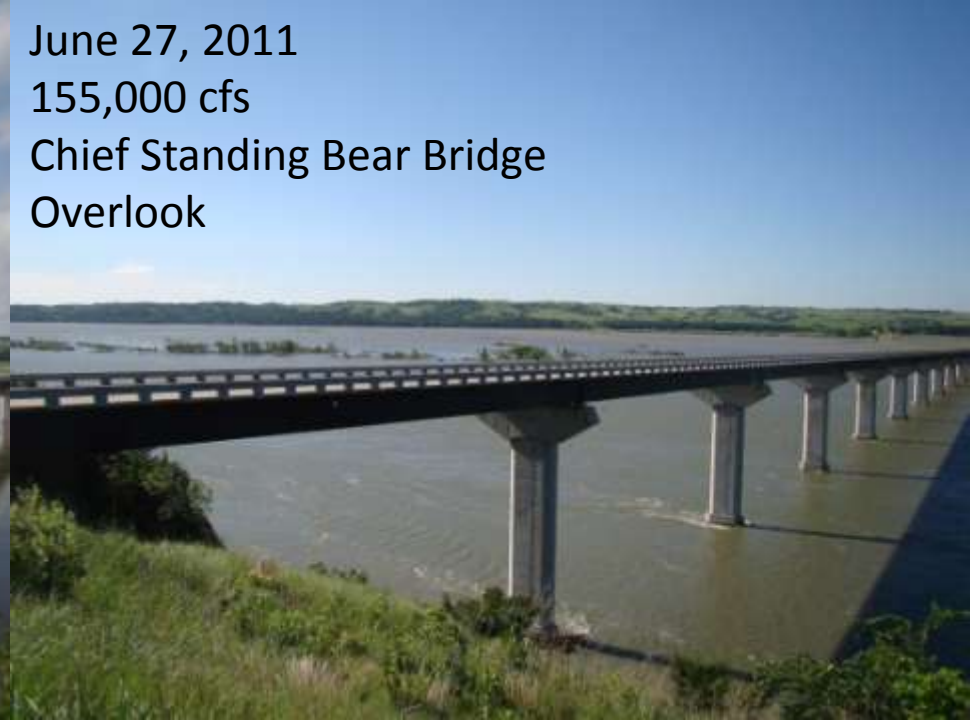
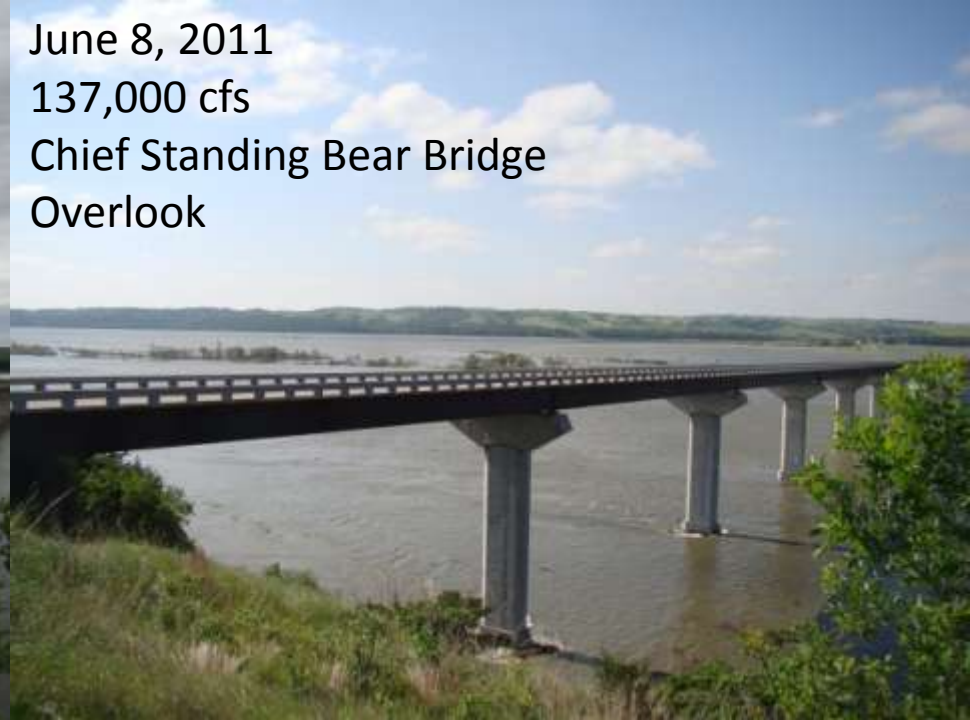
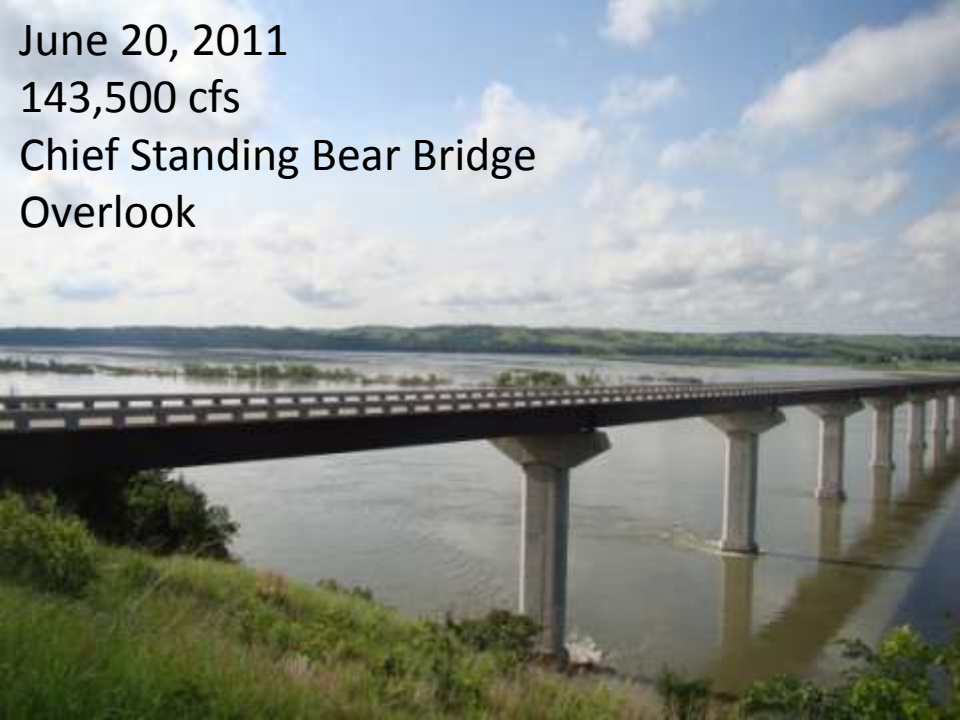
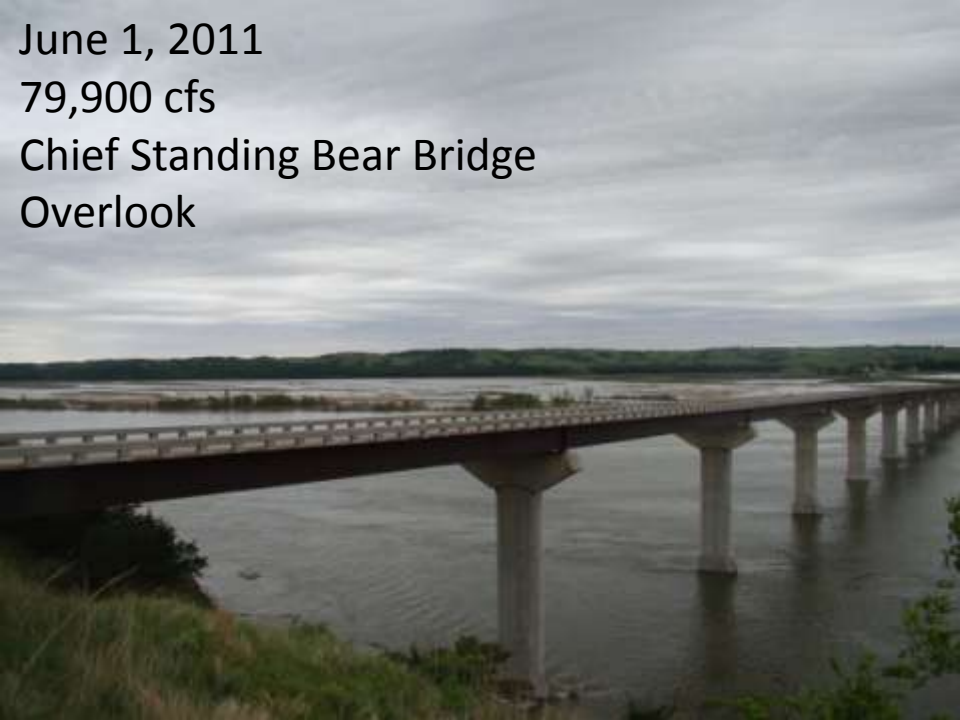


October 12, 2011

38,000 cfs

Chief Standing Bear Bridge
Overlook



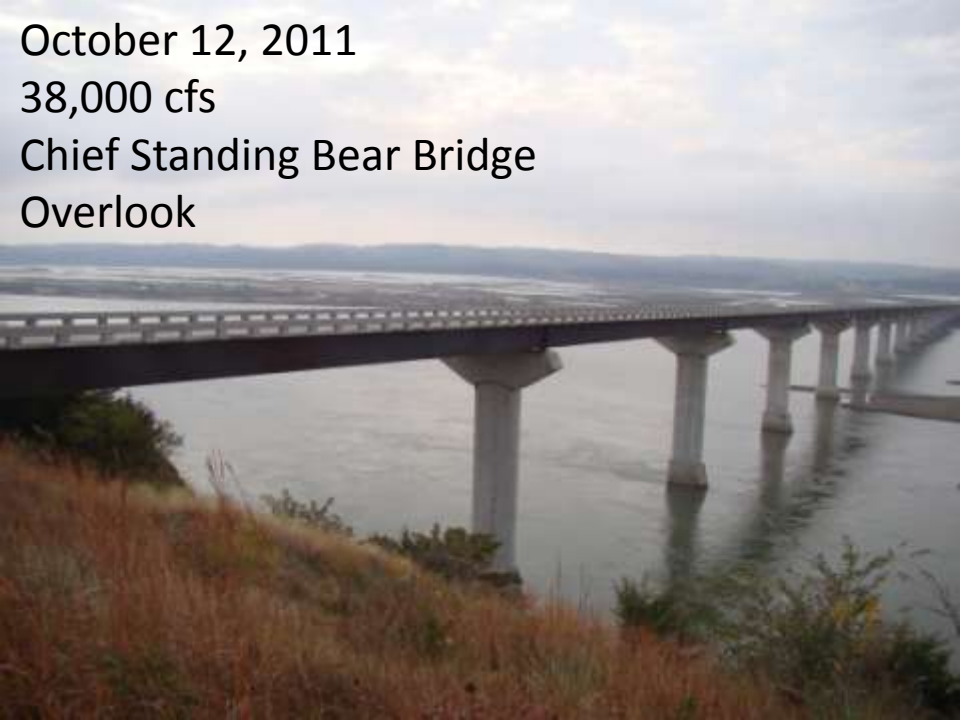
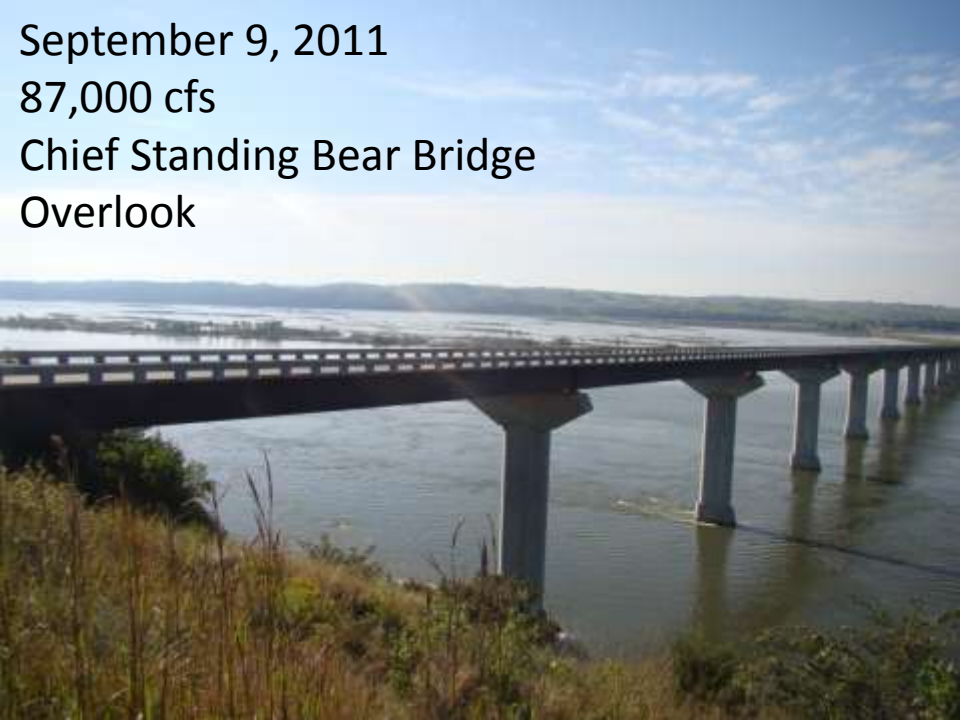
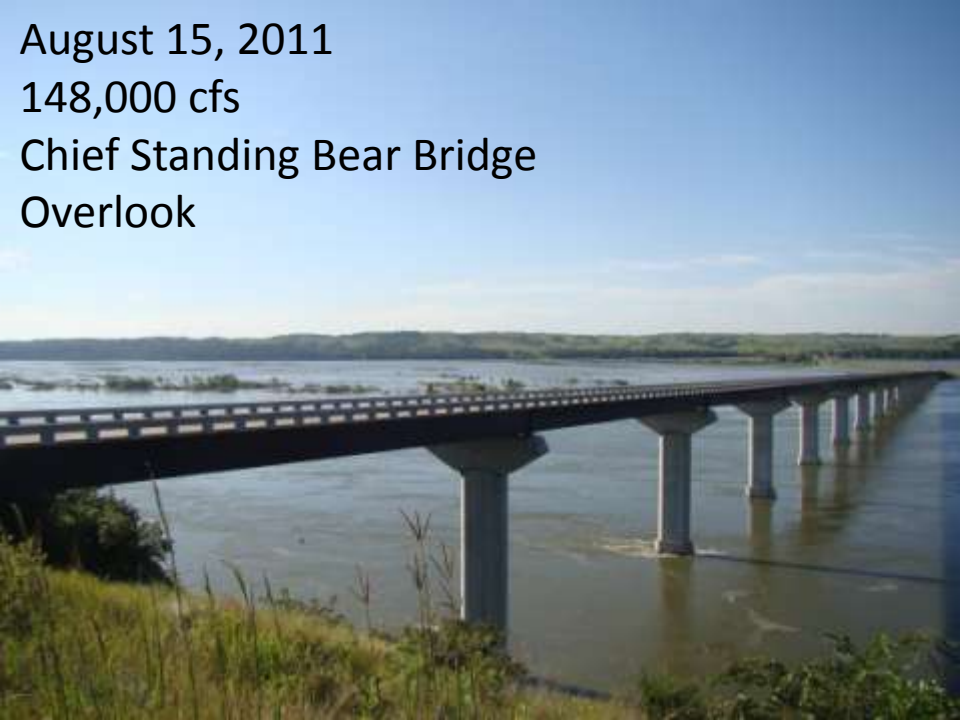
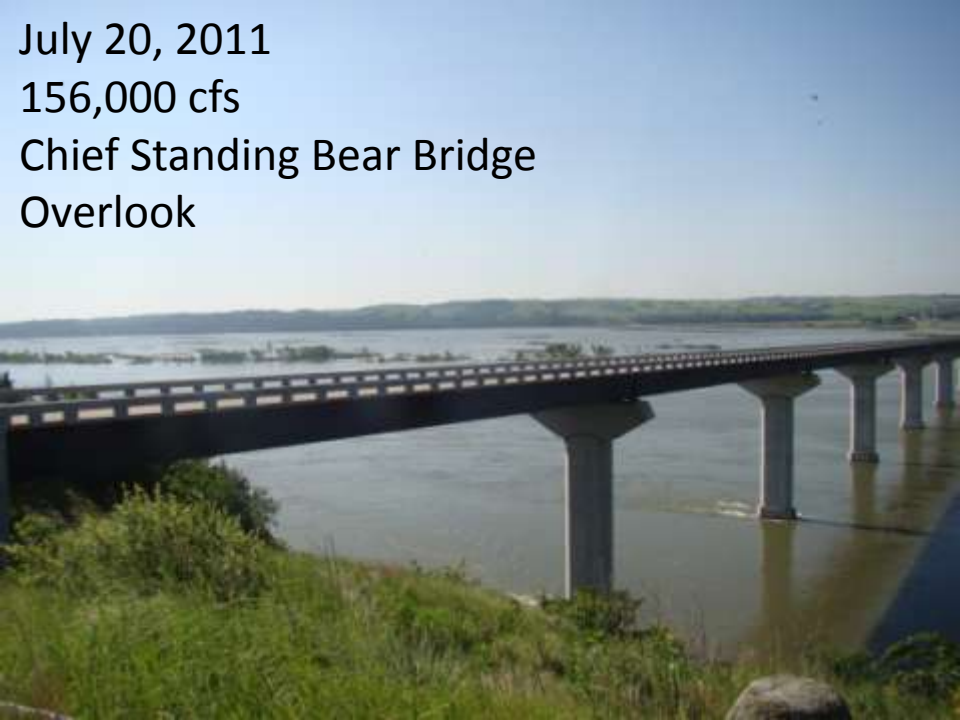


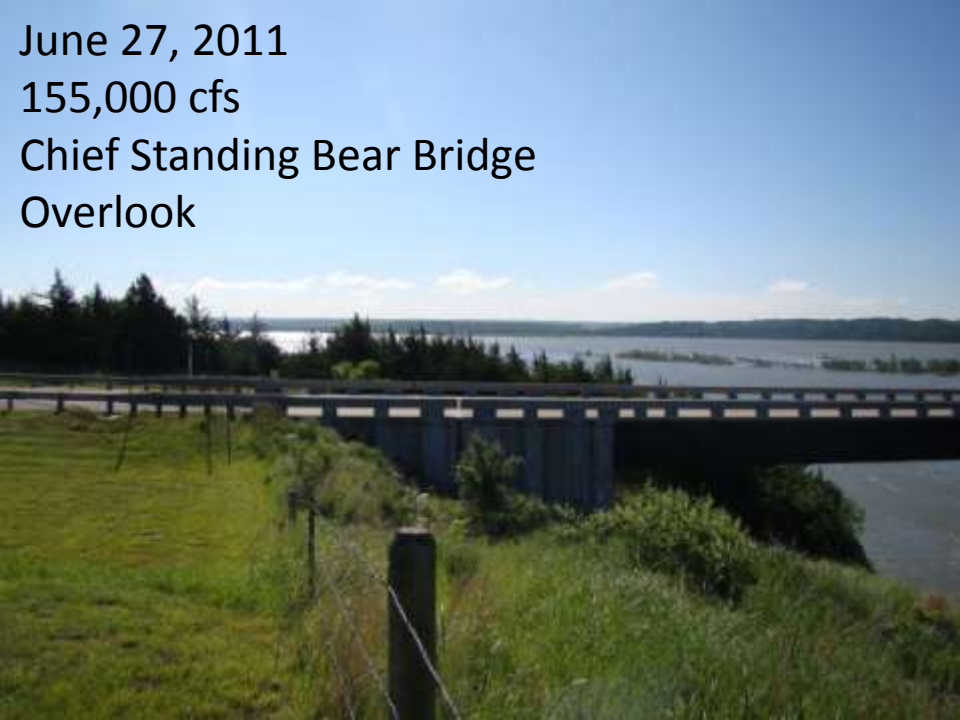
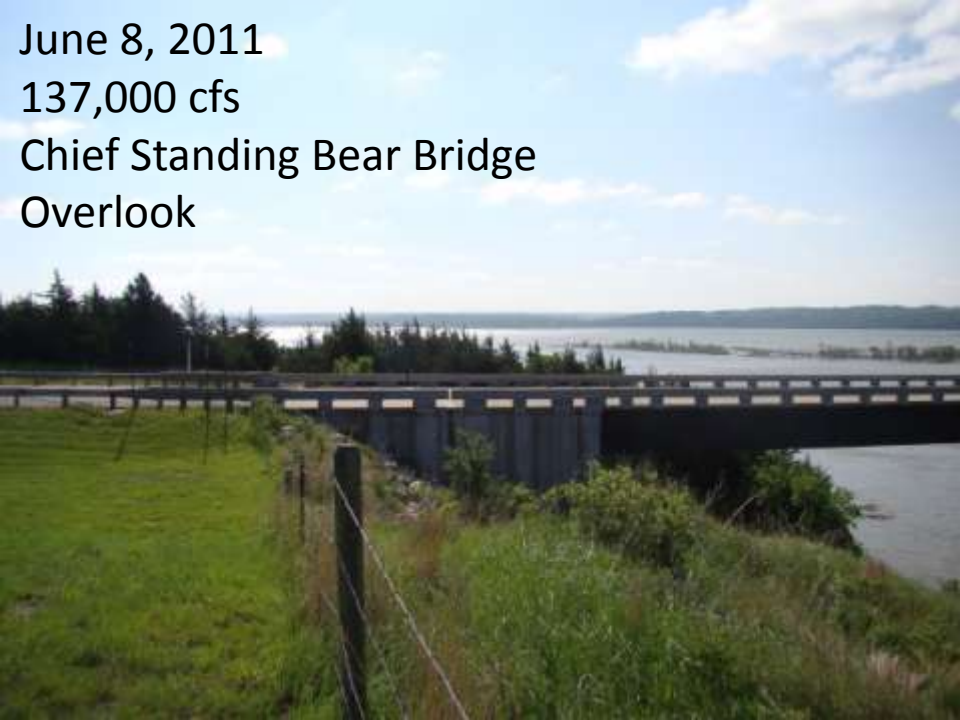
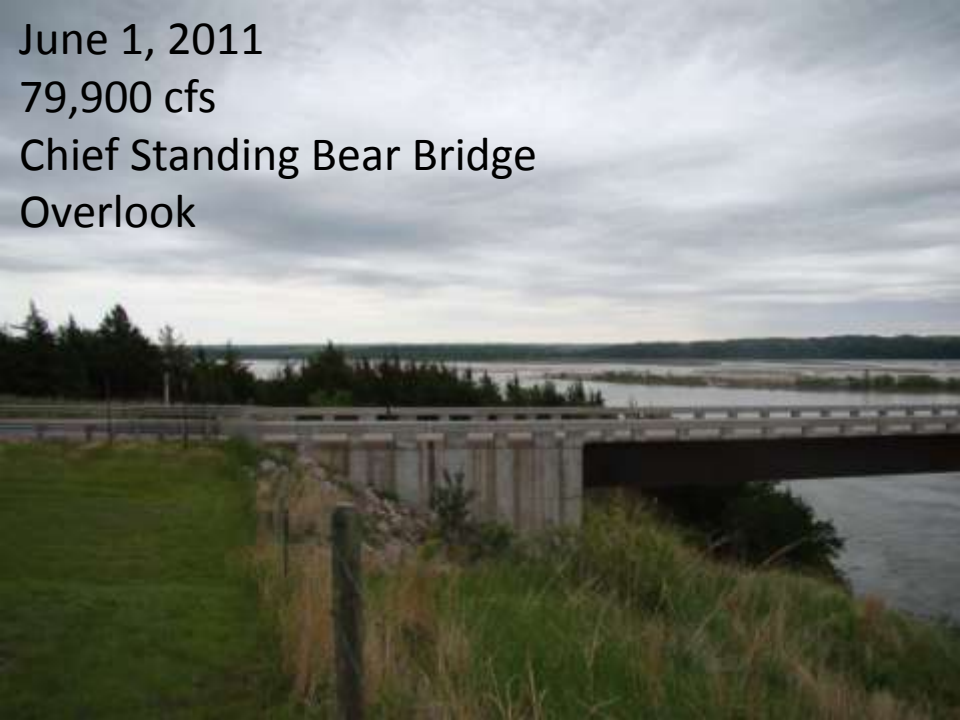
June 1, 2011
79,900 cfs
Chief Standing Bear Bridge
Overlook

June 8, 2011
137,000 cfs
Chief Standing Bear Bridge
Overlook

June 20, 2011
143,500 cfs
Chief Standing Bear Bridge
Overlook

June 27, 2011
155,000 cfs
Chief Standing Bear Bridge
Overlook





July 20, 2011

156,000 cfs

Chief Standing Bear Bridge
Overlook



August 15, 2011

148,000 cfs

Chief Standing Bear Bridge
Overlook



September 9, 2011

87,000 cfs

Chief Standing Bear Bridge
Overlook



October 12, 2011

38,000 cfs

Chief Standing Bear Bridge
Overlook

